

Miller 44-20 Wellhead Line (12319948_FL): Off-Location Flowline Abandonment

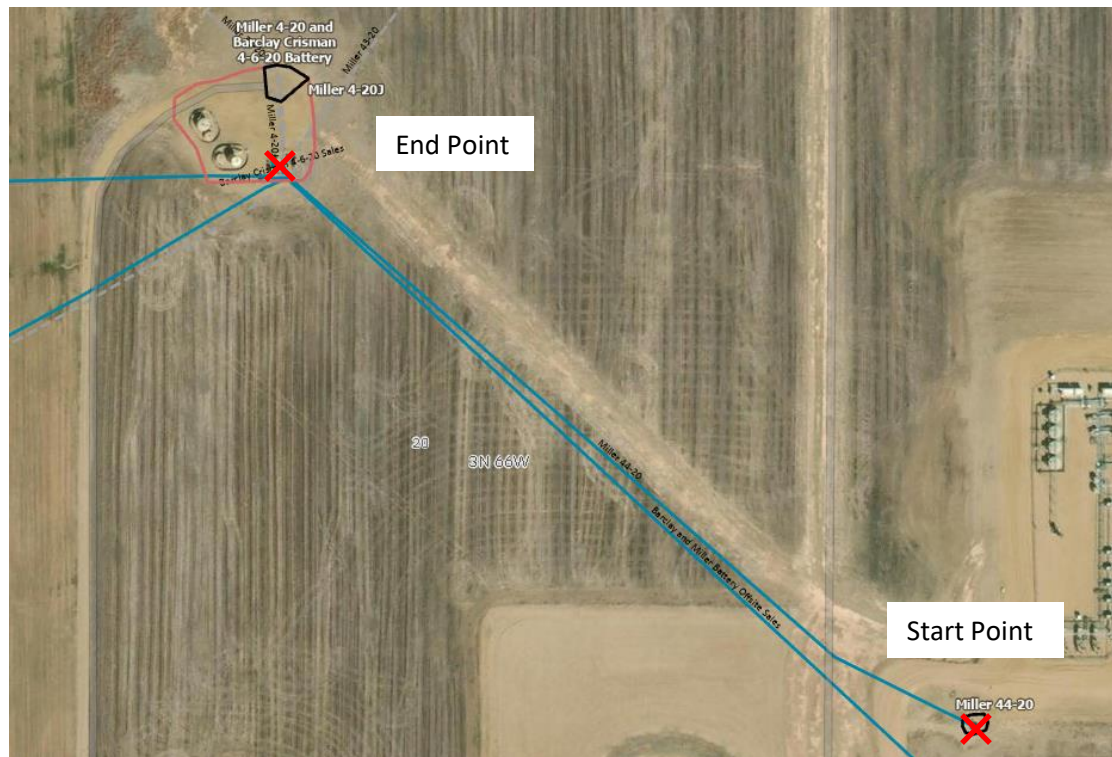
40.204595, -104.793229

SESE Sec. 20 T3N, R66W, 6th PM

Weld County, Colorado

Crestone Peak Resources (10633)

Flowline Unique OperFeatID	Line Type	Start Location	Start Location Latitude	Start Location Longitude	End Location	End Location Latitude (Cut Point)	End Location Longitude (Cut Point)	Approx. Length to Abandon (ft)
12319948_FL Miller 44-20 Wellhead Line	Multiphase	Wellhead	40.204595	-104.793229	Separator	40.206502	-104.796337	1125



Site Investigation Points

✗ Visual Inspection and Soil Sample