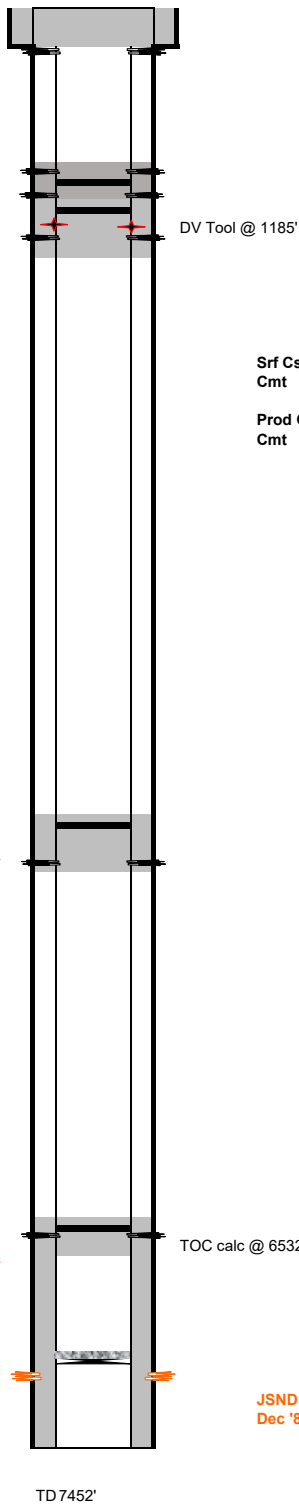


Goodwin Energy Management, LLC
Proposed P&A

Perf @ 220'
90 sx to surf

Perf @ 1035'
Set cmt retainer @ 1060'
Perf @ 1100'
25 sx, 5 on top of retainer

Perf @ 1235'
Set cmt retainer @ 1135'
50 sx, 10 on top of retainer



General Well Info		Updated: 6/10/2022	
Well Name:	Bowen-Amoco #44-08	Field:	Zenith (98940)
Srf Location:	SESE S8 T3S R62W	County:	Adams
Lease # _(BLM) :	N/A	State:	CO
API #:	05-001-07869	Spud Date:	8/3/1981
GL Elev:	5264'	TD Date:	8/15/1981
KB Elev:	5274'	Compl Date:	12/31/1981
Formation Tops			
Zone	Depth	Zone	Depth
Fox Hills Base	1,085'		
Niobrara	6,424'		
Bentonite	7,126'		
D Sand	7,216'		
J Sand	7,272'		
Skull Creek	7,350'		

Srf Csg 12 1/2" hole, 8 5/8" 24# csg @ 170', set 8/4/81
Cmt 200 sx 3% CaCl, 1/4#/sx floeal, TOC @ surf

Prod Csg 7 7/8" hole, 35 jts (775') 4.5" 11.6# J55, 223 jts (6652') 4 1/2" 10.5# J55. Prod csg @ 7427', set 8/15/81
Cmt 200 sx Class G, 10% salt, 20% 100 mesh sand, 3/4% D59, 3/4% D65; 2nd stage 100 gal csg gel 1185' to surf, DV tool @ 1185', calc TOC @ 6532'

Perf @ 4550'
Set cement retainer @ 4350'
85 sx, 10 sx on top of retainer

Perf @ 6474'
Set cement retainer @ 6424'
50 sx, 10 sx on top of retainer

CIBP @ 7222'
2 sx on top

JSND 7272'-7282', 7299'-7301', 7305'-7306', 7312'-7316', 7320'-7348', 0.39" 87 holes total
Dec '81 7320'-7348': 4000 gal 7 1/2% MCA
7272'-7348': 1000 gal 15% HCl
7272'-7348': 100,000 Versagel, 41 tons CO2, 14,000# 100 mesh, 145,000# 20/40