

Legend

Sample Location area*

*Number of samples subject to field observations but, at a minimum, will follow Rule 911.A.(4) Operator Guidance and/or approved sampling plan.

**Soil to be screened with PID, documentation of results will be provided following Rule 911.A.(4) Guidance.

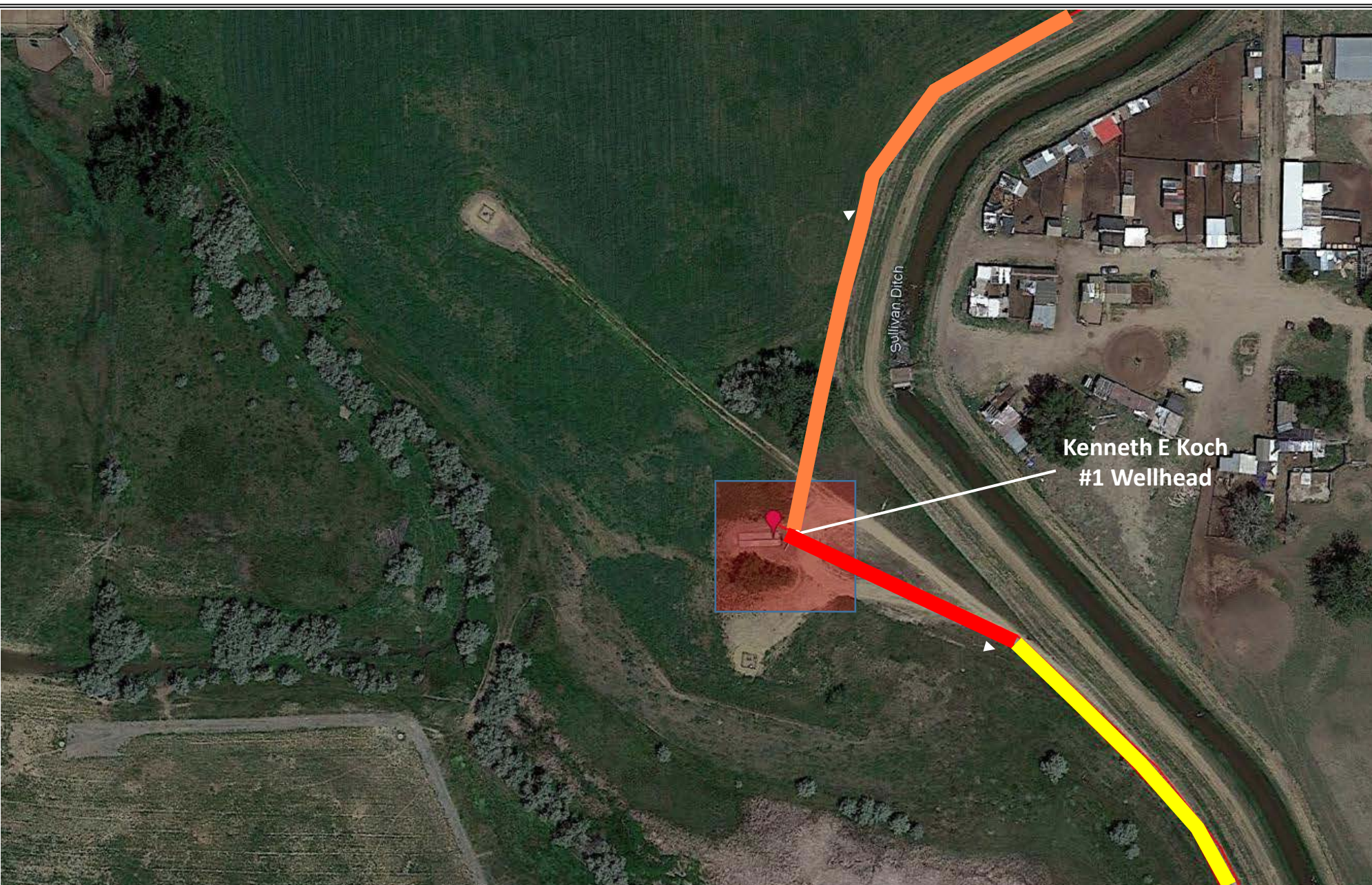
Date:	September 2022
Designed By:	K.P. Kauffman Co.
Drawn By:	RMG



K.P. Kauffman Co., Inc.
1700 Lincoln St., #4545
Denver CO, 80203

Kenneth E KOCH Wellhead and Flowline Closure
NENE-SENE , Sec.6, T1N, R68W
Weld County, Colorado

Figure #1
TOPO Location Map

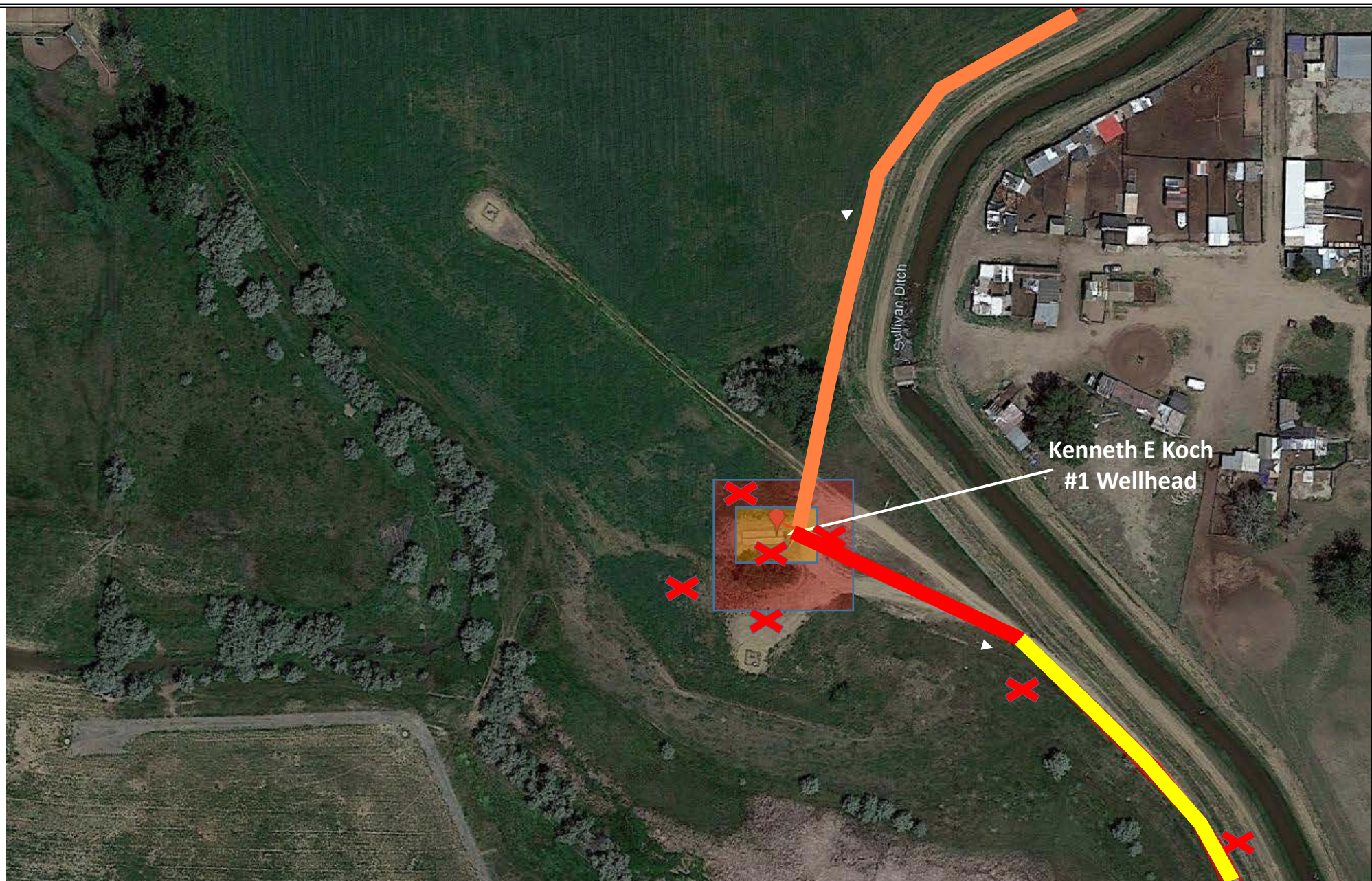


Legend

- Sample Location area*
- Flowline being removed
- Flowline associated with Koch 41-6 Doc. 403047535
- Flowline being Abandoned in place

*Number of samples subject to field observations but, at a minimum, will follow Rule 911.A.(4) Operator Guidance and/or approved sampling plan.

**Soil to be screened with PID, documentation of results will be provided following Rule 911.A.(4) Guidance.



Legend

Sample Location area*

Soil Screening area**

X

Approx. Sample Locations, including Background sampling

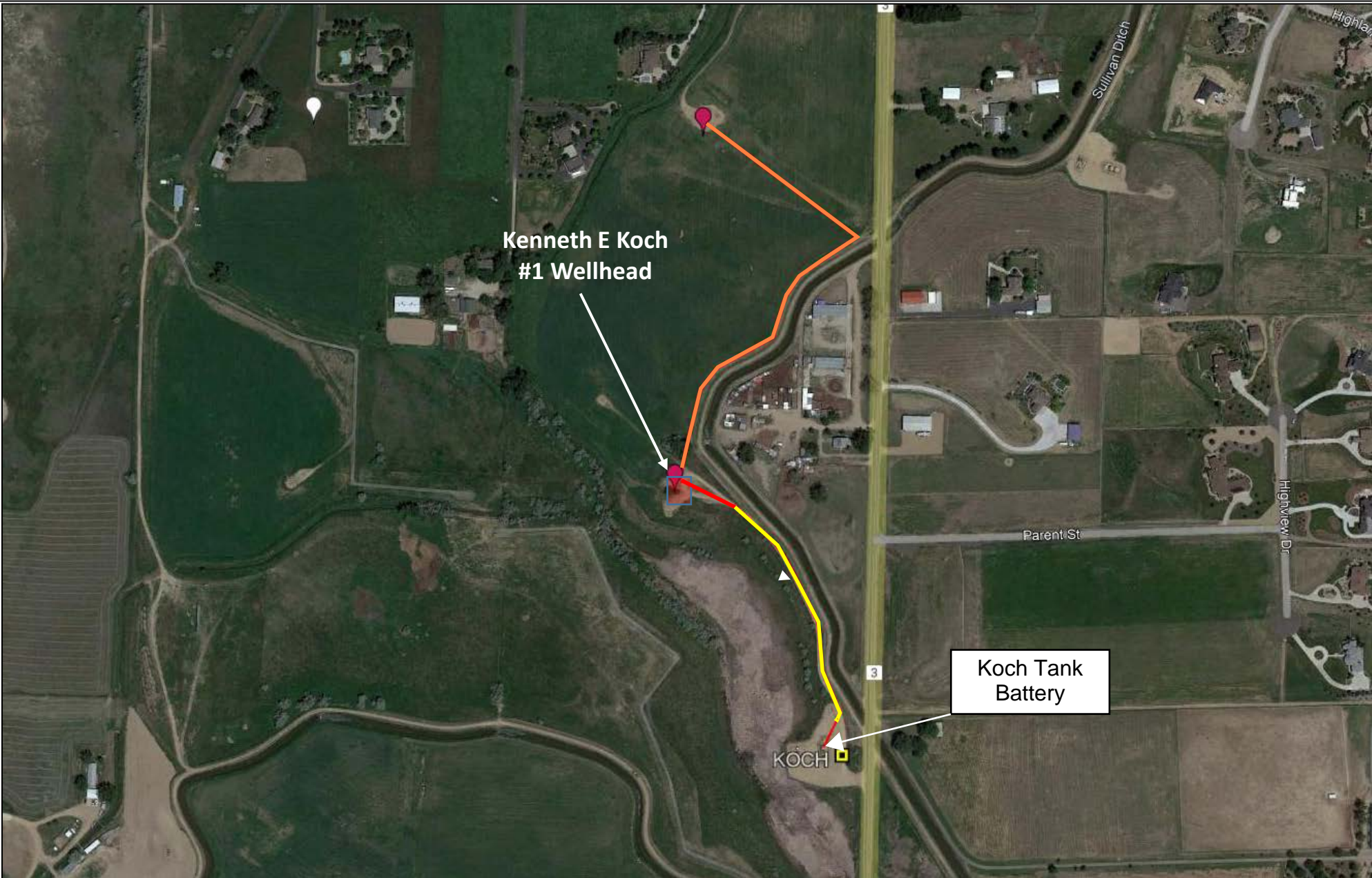
*Number of samples subject to field observations but, at a minimum, will follow Rule 911.A.(4) Operator Guidance and/or approved sampling plan.

**Soil to be screened with PID, documentation of results will be provided following Rule 911.A.(4) Guidance.

Flowline being removed

Flowline associated with Koch 41-6 Doc. 403047535

Flowline being Abandoned in place




- Legend
- Sample Location area*
 - Flowline being removed
 - Flowline associated with Koch 41-6 Doc. 403047535
 - Flowline being Abandoned in place

*Number of samples subject to field observations but, at a minimum, will follow Rule 911.A.(4) Operator Guidance and/or approved sampling plan.

**Soil to be screened with PID, documentation of results will be provided following Rule 911.A.(4) Guidance.

Date:	September 2022
Designed By:	K.P. Kauffman Co.
Drawn By:	RMG

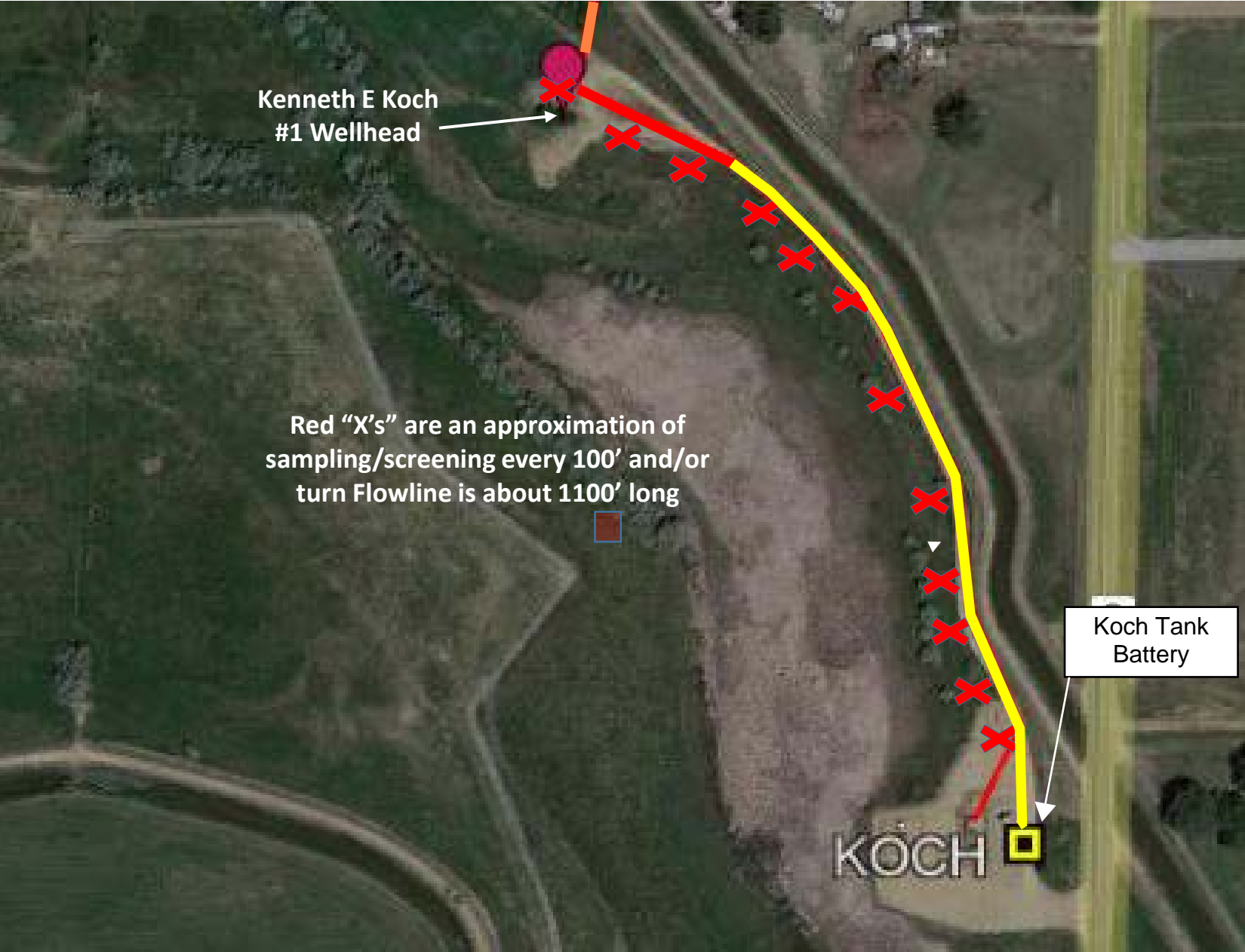


K.P. KAUFFMAN COMPANY, INC.

K.P. Kauffman Co., Inc.
1700 Lincoln St., #4545
Denver CO, 80203

Kenneth E KOCH Wellhead and Flowline Closure
NENE-SENE , Sec.6, T1N, R68W
Weld County, Colorado

Figure #4
Flowline Map



- Legend
- Sample Location area*
 - Sample Screen every 100'/turn
 - Flowline being removed
 - Flowline associated with Koch 41-6 Doc. 403047535
 - Flowline being Abandoned in place

*Number of samples subject to field observations but, at a minimum, will follow Rule 911.A.(4) Operator Guidance and/or approved sampling plan.

**Soil to be screened with PID, documentation of results will be provided following Rule 911.A.(4) Guidance.

Date:	September 2022
Designed By:	K.P. Kauffman Co.
Drawn By:	RMG



K.P. Kauffman Co., Inc.
1700 Lincoln St., #4545
Denver CO, 80203

Kenneth E KOCH Wellhead and Flowline Closure
NENE-SENE , Sec.6, T1N, R68W
Weld County, Colorado

Figure #5
Sample/Screening along flowline Map