

CRESTONE PEAK RESOURCES

PROPERTY RESERVE #4-65 3-4 3BH
 NW $\frac{1}{4}$ SW $\frac{1}{4}$ SECTION 2, T4S, R65W, 6TH P.M.
 ARAPAHOE COUNTY, STATE OF COLORADO

NOTES

1. DISTANCES ARE MEASURED PERPENDICULARLY TO THE NEAREST SECTION LINE.
2. THIS MAP DOES NOT REPRESENT A MONUMENTED BOUNDARY SURVEY. SIXTEENTH CORNER LOCATIONS ARE CALCULATED ONLY, UNLESS OTHERWISE NOTED.
3. BOTTOM HOLE AND HORIZONTAL COMPLETION ZONE LOCATIONS HAVE BEEN PROVIDED BY OTHERS.




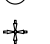

BASIS OF BEARINGS

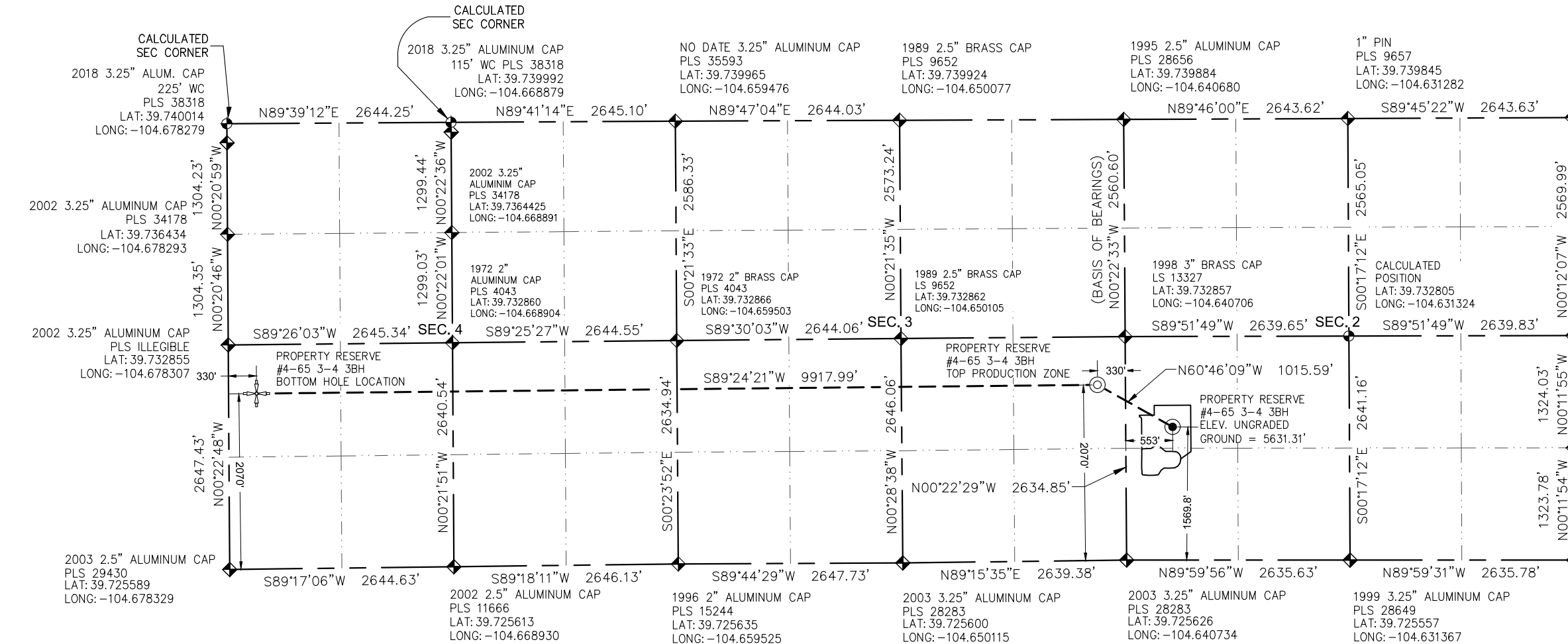
BEARINGS SHOWN HEREON ARE BASED ON GPS OBSERVATIONS ON THE WEST LINE OF THE NW $\frac{1}{4}$ OF SECTION 2, TOWNSHIP 4 SOUTH, RANGE 65 WEST, SIXTH PRINCIPAL MERIDIAN, MONUMENTED AS SHOWN.

BASIS OF ELEVATION

ELEVATIONS SHOWN HEREON ARE NAVD88 AND ARE BASED ON GPS OBSERVATIONS

LEGEND

-  ALIQUOT CORNER AS DESCRIBED
-  ALIQUOT CORNER, CALCULATED
-  WELL HEAD SURFACE LOCATION
-  TOP PRODUCTION ZONE
-  BOTTOM HOLE LOCATION

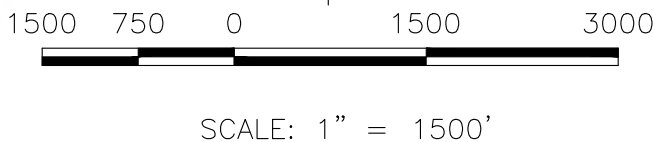


CERTIFICATE

WESTWOOD PROFESSIONAL SERVICES HAS DETERMINED THAT THE SURFACE LOCATION OF THE PROPOSED WELL IDENTIFIED AS THE PROPERTY RESERVE #4-65 3-4 3BH TO BE 553 FEET FROM THE WEST LINE AND 1569.8 FEET FROM THE SOUTH LINE OF SECTION 2, TOWNSHIP 4 SOUTH, RANGE 65 WEST OF THE SIXTH PRINCIPAL MERIDIAN, ARAPAHOE COUNTY, STATE OF COLORADO.



PATRICK M. STEENBURG, COLORADO PLS 38004
 FOR AND ON BEHALF OF
 WESTWOOD PROFESSIONAL SERVICES.



WELL HEAD SURFACE LOCATION	TOP PRODUCTION ZONE	BOTTOM HOLE LOCATION
NAD 83 LATITUDE = 39.729920 LONGITUDE = -104.638752	NAD 83 LATITUDE = 39.731304 LONGITUDE = -104.641885	NAD 83 LATITUDE = 39.731273 LONGITUDE = -104.677139
STATE PLANE NAD 83 (Co. Central) N: 1,691,900.99 E: 3,242,233.22	STATE PLANE NAD 83 (Co. Central) N: 1,692,396.82 E: 3,241,347.22	STATE PLANE NAD 83 (Co. Central) N: 1,692,293.98 E: 3,231,432.44

Westwood
 10333 E DRY CREEK RD.
 SUITE 240
 ENGLEWOOD, CO 80112
 TEL: 720.482.9526
 Westwoods.com
 Westwood Professional Services, Inc.

CRESTONE PEAK RESOURCES OPERATING LLC
 ATTN: KATHY DENZER
 34501 E. QUINCY AVE., BUILDING 1
 WATKINS, CO 80137
 ATTN: (720) 410-8519

WELL LOCATION PLAT
 CRESTONE PEAK RESOURCES
 PROPERTY RESERVE
 #4-65 3-4 3BH

SCALE: AS SHOWN
 FILE NO: R0031976.00

DRAWN BY: MJP
 CHECKED BY: PMS
 DATE: JULY, 2022

SHEET NUMBER: 10 OF 11

PDOP: 1.4

2	WELL RELOCATION	07-13-22
1	WELL RELOCATION	10-28-19