

CRESTONE PEAK RESOURCES

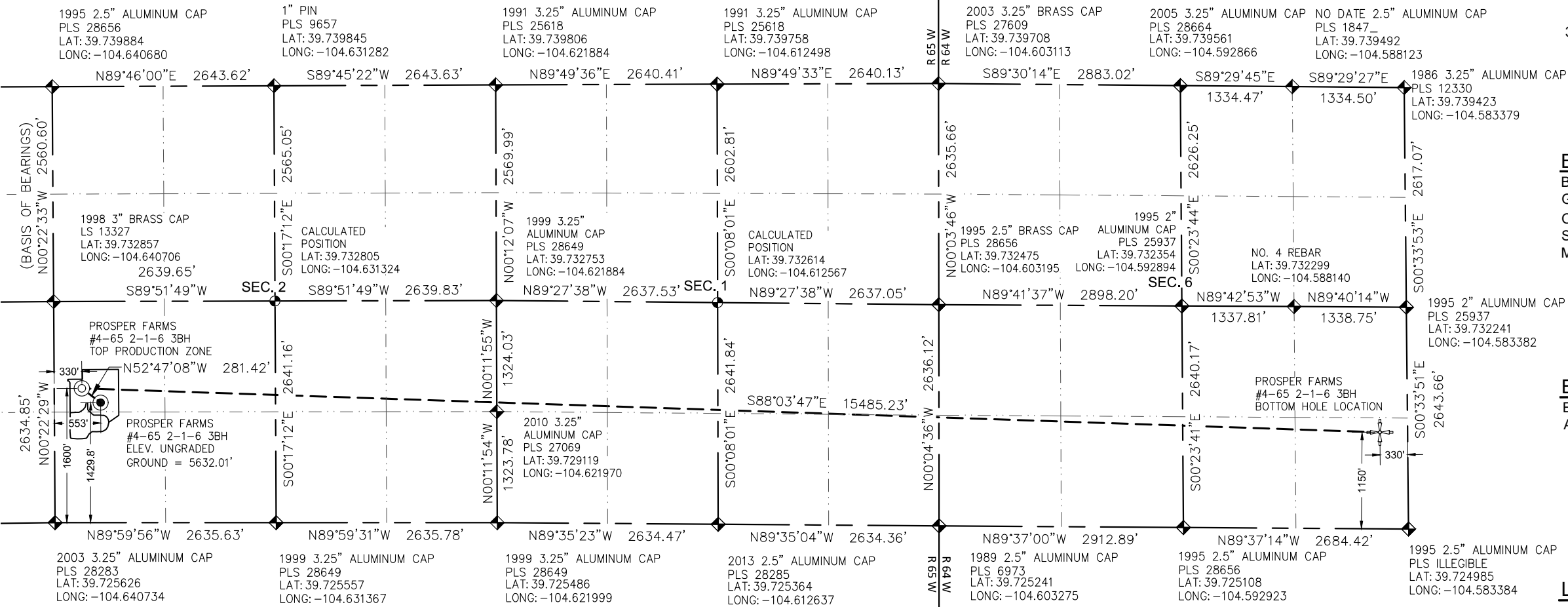
PROSPER FARMS #4-65 2-1-6 3BH
NW¼ SW¼ SECTION 2, T4S, R65W, 6TH P.M.
ARAPAHOE COUNTY, STATE OF COLORADO

- NOTES
- DISTANCES ARE MEASURED PERPENDICULARLY TO THE NEAREST SECTION LINE.
 - THIS MAP DOES NOT REPRESENT A MONUMENTED BOUNDARY SURVEY. SIXTEENTH CORNER LOCATIONS ARE CALCULATED ONLY, UNLESS OTHERWISE NOTED.
 - BOTTOM HOLE AND HORIZONTAL COMPLETION ZONE LOCATIONS HAVE BEEN PROVIDED BY OTHERS.

BASIS OF BEARINGS
BEARINGS SHOWN HEREON ARE BASED ON GPS OBSERVATIONS ON THE WEST LINE OF THE NW¼ OF SECTION 2, TOWNSHIP 4 SOUTH, RANGE 65 WEST, SIXTH PRINCIPAL MERIDIAN, MONUMENTED AS SHOWN.

BASIS OF ELEVATION
ELEVATIONS SHOWN HEREON ARE NAVD88 AND ARE BASED ON GPS OBSERVATIONS

- LEGEND
- ALIQUOT CORNER AS DESCRIBED
 - ALIQUOT CORNER, CALCULATED
 - WELL HEAD SURFACE LOCATION
 - TOP PRODUCTION ZONE
 - BOTTOM HOLE LOCATION

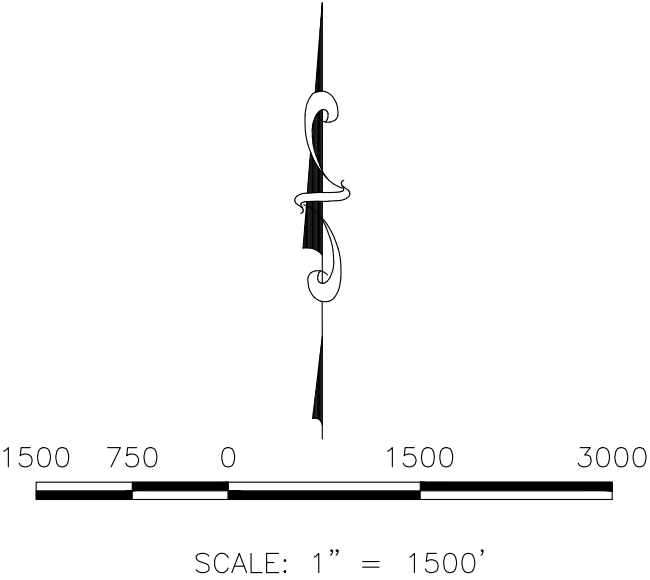


CERTIFICATE
WESTWOOD PROFESSIONAL SERVICES HAS DETERMINED THAT THE SURFACE LOCATION OF THE PROPOSED WELL IDENTIFIED AS THE PROSPER FARMS #4-65 2-1-6 3BH TO BE 553 FEET FROM THE WEST LINE AND 1429.8 FEET FROM THE SOUTH LINE OF SECTION 2, TOWNSHIP 4 SOUTH, RANGE 65 WEST OF THE SIXTH PRINCIPAL MERIDIAN, ARAPAHOE COUNTY, STATE OF COLORADO.

PATRICK M. STEENBURG, COLORADO PLS 38004
FOR AND ON BEHALF OF WESTWOOD PROFESSIONAL SERVICES.

11/18/2022

COLORADO LICENSED SURVEYOR
PATRICK M. STEENBURG
38004
PROFESSIONAL LAND SURVEYOR



WELL HEAD SURFACE LOCATION	TOP PRODUCTION ZONE	BOTTOM HOLE LOCATION
NAD 83 LATITUDE = 39.729535 LONGITUDE = -104.638753	NAD 83 LATITUDE = 39.730008 LONGITUDE = -104.639544	NAD 83 LATITUDE = 39.728157 LONGITUDE = -104.584556
STATE PLANE NAD 83 (Co. Central) N: 1,691,761.03 E: 3,242,234.14	STATE PLANE NAD 83 (Co. Central) N: 1,691,931.20 E: 3,242,010.10	STATE PLANE NAD 83 (Co. Central) N: 1,691,407.96 E: 3,257,482.29

CRESTONE PEAK RESOURCES
OPERATING LLC
ATTN: KATHY DENZER
34501 E. QUINCY AVE., BUILDING 1
WATKINS, CO 80137
ATTN: (720) 410-8519

WELL LOCATION PLAT
CRESTONE PEAK RESOURCES
PROSPER FARMS #4-65 2-1-6 3BH

SCALE:
AS SHOWN
FILE NO:
R0031976.00

DRAWN BY: MJP
CHECKED BY: PMS
DATE: JULY, 2022

SHEET NUMBER
6 OF 11

Westwood
10333 E DRY CREEK RD,
SUITE 240
ENGLEWOOD, CO 80112
TEL: 720.482.9526
Westwoodsps.com
Westwood Professional Services, Inc.

2
1
No.

07-13-22
10-28-19
Date