

# **CRESTONE PEAK RESOURCES**

**ARAPAHOE COUNTY**

**SEC 2-T4S-R65W**

**PROSPER FARMS 4-65 2-1-6 3BH**

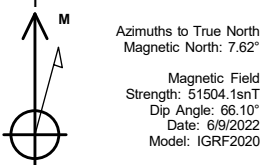
**OWB**

**Plan: PROPOSAL 1**

## **Standard Planning Report**

**12 August, 2022**

Project: ARAPAHOE COUNTY  
Site: SEC 2-T4S-R65W  
Well: PROSPER FARMS 4-65 2-1-6 3BH  
Wellbore: OWB  
Design: PROPOSAL 1



WELL DETAILS: PROSPER FARMS 4-65 2-1-6 3BH

5631.61							Slot
+N/-S	+E/-W	Northing	Easting	Latitude	Longitude		
0.00	0.00	1691760.92	3242234.23	39.729535°N	104.638753°W		

SECTION DETAILS

Sec	MD	Inc	Azi	TVD	+N/-S	+E/-W	Dleg	TFace	VSec	Target
1	0.00	0.00	0.00	0.00	0.00	0.00	0.00	0.00	0.00	
2	600.00	0.00	0.00	600.00	0.00	0.00	0.00	0.00	0.00	
3	958.25	7.16	281.69	957.32	4.53	-21.91	2.00	281.69	-22.04	
4	7257.20	7.16	281.69	7207.08	163.67	-791.27	0.00	0.00	-796.19	
5	8227.52	90.00	90.68	7850.00	172.30	-222.48	10.00	168.91	-227.98	LP-PROSPER FARMS 4-65 2-1-6
6	15816.19	90.00	90.68	7850.00	81.70	7365.65	0.00	0.00	7359.07	MID-PROSPER FARMS 4-65 2-1-6
7	15994.19	90.00	94.24	7850.00	74.05	7543.46	2.00	90.00	7537.03	PBHL-PROSPER FARMS 4-65 2-1-6
8	23715.94	90.00	94.24	7850.00	-497.41	15244.03	0.00	0.00	15252.14	PBHL-PROSPER FARMS 4-65 2-1-6

ANNOTATIONS

MD	Inc	Azi	TVD	+N/-S	+E/-W	VSec	Departure	Annotation
600.00	0.00	0.00	600.00	0.00	0.00	0.00	0.00	Start Build 2.00
958.25	7.16	281.69	957.32	4.53	-21.91	-22.04	22.37	Start 6298.95 hold at 958.25 MD
7257.20	7.16	281.69	7207.08	163.67	-791.27	-796.19	808.02	Start DLS 10.00 TFO 168.91
8227.52	90.00	90.68	7850.00	172.30	-222.48	-227.98	1387.37	Start 7588.67 hold at 8227.52 MD
15816.19	90.00	90.68	7850.00	81.70	7365.65	7359.07	8976.03	Start DLS 2.00 TFO 90.00
15994.19	90.00	94.24	7850.00	74.05	7543.46	7537.03	9154.04	Start 7721.75 hold at 15994.19 MD
23715.94	90.00	94.24	7850.00	-497.41	15244.03	15252.14	16875.78	TD at 23715.94

DESIGN TARGET DETAILS

Name	TVD	+N/-S	+E/-W	Northing	Easting	Latitude	Longitude	Shape
LP-PROSPER FARMS 4-65 2-1-6	7850.00	172.30	-222.48	1691931.11	3242010.13	39.730008°N	104.639544°W	Point
- plan hits target center								
MID-PROSPER FARMS 4-65 2-1-6	7850.00	81.70	7365.65	1691912.45	3249598.75	39.729756°N	104.612565°W	Point
- plan hits target center								
PBHL-PROSPER FARMS 4-65 2-1-6	7850.00	-497.41	15244.03	1691408.05	3257482.23	39.728157°N	104.584556°W	Point
- plan hits target center								

PROJECT DETAILS: ARAPAHOE COUNTY

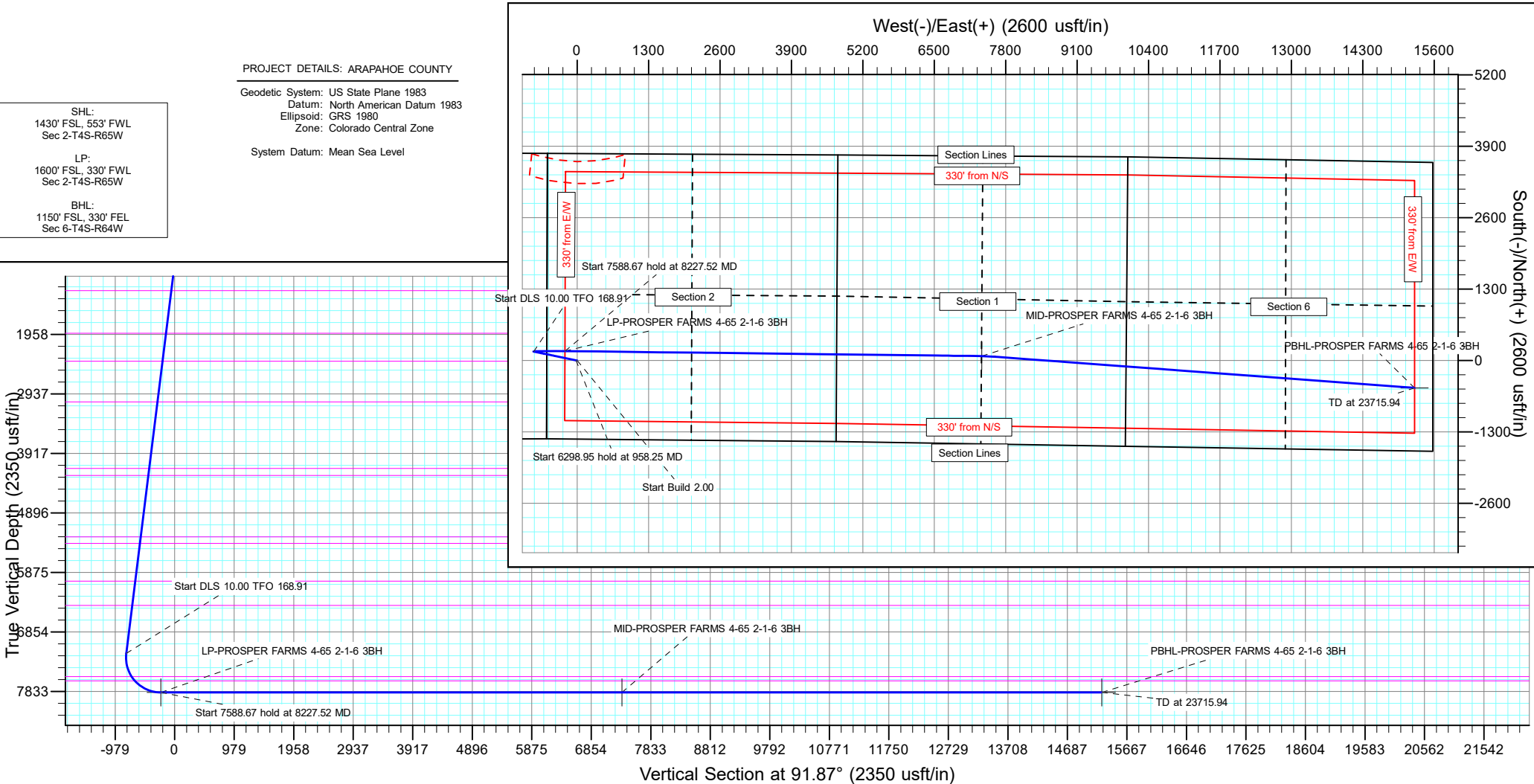
Geodetic System: US State Plane 1983  
Datum: North American Datum 1983  
Ellipsoid: GRS 1980  
Zone: Colorado Central Zone

System Datum: Mean Sea Level

SHL:  
1430' FSL, 553' FWL  
Sec 2-T4S-R65W

LP:  
1600' FSL, 330' FWL  
Sec 2-T4S-R65W

BHL:  
1150' FSL, 330' FEL  
Sec 6-T4S-R64W



## Planning Report

<b>Database:</b>	EDT_32Bit_ODBC	<b>Local Co-ordinate Reference:</b>	Well PROSPER FARMS 4-65 2-1-6 3BH
<b>Company:</b>	CRESTONE PEAK RESOURCES	<b>TVD Reference:</b>	KB 25' @ 5656.61usft
<b>Project:</b>	ARAPAHOE COUNTY	<b>MD Reference:</b>	KB 25' @ 5656.61usft
<b>Site:</b>	SEC 2-T4S-R65W	<b>North Reference:</b>	True
<b>Well:</b>	PROSPER FARMS 4-65 2-1-6 3BH	<b>Survey Calculation Method:</b>	Minimum Curvature
<b>Wellbore:</b>	OWB		
<b>Design:</b>	PROPOSAL 1		

<b>Project</b>	ARAPAHOE COUNTY		
<b>Map System:</b>	US State Plane 1983	<b>System Datum:</b>	Mean Sea Level
<b>Geo Datum:</b>	North American Datum 1983		
<b>Map Zone:</b>	Colorado Central Zone		Using geodetic scale factor

Site		SEC 2-T4S-R65W			
Site Position:		Northing:	1,695,525.07 usft	Latitude:	39.739883°N
From:	Lat/Long	Easting:	3,241,656.33 usft	Longitude:	104.640681°W
Position Uncertainty:	0.00 usft	Slot Radius:	13.200 in	Grid Convergence:	0.54 °

Well	PROSPER FARMS 4-65 2-1-6 3BH					
Well Position	+N/-S	-3,769.45 usft	Northing:	1,691,760.92 usft	Latitude:	39.729535°N
	+E/-W	542.28 usft	Easting:	3,242,234.24 usft	Longitude:	104.638753°W
Position Uncertainty		0.00 usft	Wellhead Elevation:		Ground Level:	5,631.61 usft

<b>Wellbore</b>	OWB				
<b>Magnetics</b>	<b>Model Name</b>	<b>Sample Date</b>	<b>Declination (°)</b>	<b>Dip Angle (°)</b>	<b>Field Strength (nT)</b>
	IGRF2020	6/9/2022	7.62	66.10	51,504.08078478

<b>Design</b>	PROPOSAL 1			
<b>Audit Notes:</b>				
<b>Version:</b>	<b>Phase:</b>	PROTOTYPE	<b>Tie On Depth:</b>	0.00
<b>Vertical Section:</b>	<b>Depth From (TVD) (usft)</b>	<b>+N/-S (usft)</b>	<b>+E/-W (usft)</b>	<b>Direction (°)</b>
	0.00	0.00	0.00	91.87

<b>Plan Survey Tool Program</b>	<b>Date</b>	8/12/2022		
<b>Depth From (usft)</b>	<b>Depth To (usft)</b>	<b>Survey (Wellbore)</b>	<b>Tool Name</b>	<b>Remarks</b>
1	0.00	23,715.94 PROPOSAL 1 (OWB)	MWD OWSG	
			OWSG MWD - Standard	

<b>Plan Sections</b>										
<b>Measured Depth (usft)</b>	<b>Inclination (°)</b>	<b>Azimuth (°)</b>	<b>Vertical Depth (usft)</b>	<b>+N/-S (usft)</b>	<b>+E/-W (usft)</b>	<b>Dogleg Rate (°/100ft)</b>	<b>Build Rate (°/100ft)</b>	<b>Turn Rate (°/100ft)</b>	<b>TFO (°)</b>	<b>Target</b>
0.00	0.00	0.00	0.00	0.00	0.00	0.00	0.00	0.00	0.00	
600.00	0.00	0.00	600.00	0.00	0.00	0.00	0.00	0.00	0.00	
958.25	7.16	281.69	957.32	4.53	-21.91	2.00	2.00	0.00	281.69	
7,257.20	7.16	281.69	7,207.08	163.67	-791.27	0.00	0.00	0.00	0.00	
8,227.52	90.00	90.68	7,850.00	172.30	-222.48	10.00	8.54	17.42	168.91	LP-PROSPER FARM
15,816.19	90.00	90.68	7,850.00	81.70	7,365.65	0.00	0.00	0.00	0.00	MID-PROSPER FARM
15,994.20	90.00	94.24	7,850.00	74.05	7,543.46	2.00	0.00	2.00	90.00	PBHL-PROSPER FAI
23,715.94	90.00	94.24	7,850.00	-497.41	15,244.03	0.00	0.00	0.00	0.00	PBHL-PROSPER FAI

# Planning Report

<b>Database:</b>	EDT_32Bit_ODBC	<b>Local Co-ordinate Reference:</b>	Well PROSPER FARMS 4-65 2-1-6 3BH
<b>Company:</b>	CRESTONE PEAK RESOURCES	<b>TVD Reference:</b>	KB 25' @ 5656.61usft
<b>Project:</b>	ARAPAHOE COUNTY	<b>MD Reference:</b>	KB 25' @ 5656.61usft
<b>Site:</b>	SEC 2-T4S-R65W	<b>North Reference:</b>	True
<b>Well:</b>	PROSPER FARMS 4-65 2-1-6 3BH	<b>Survey Calculation Method:</b>	Minimum Curvature
<b>Wellbore:</b>	OWB		
<b>Design:</b>	PROPOSAL 1		

Planned Survey									
Measured Depth (usft)	Inclination (°)	Azimuth (°)	Vertical Depth (usft)	+N/-S (usft)	+E/-W (usft)	Vertical Section (usft)	Dogleg Rate (°/100ft)	Build Rate (°/100ft)	Turn Rate (°/100ft)
0.00	0.00	0.00	0.00	0.00	0.00	0.00	0.00	0.00	0.00
24.00	0.00	0.00	24.00	0.00	0.00	0.00	0.00	0.00	0.00
Denver									
100.00	0.00	0.00	100.00	0.00	0.00	0.00	0.00	0.00	0.00
200.00	0.00	0.00	200.00	0.00	0.00	0.00	0.00	0.00	0.00
300.00	0.00	0.00	300.00	0.00	0.00	0.00	0.00	0.00	0.00
400.00	0.00	0.00	400.00	0.00	0.00	0.00	0.00	0.00	0.00
500.00	0.00	0.00	500.00	0.00	0.00	0.00	0.00	0.00	0.00
600.00	0.00	0.00	600.00	0.00	0.00	0.00	0.00	0.00	0.00
Start Build 2.00									
664.01	1.28	281.69	664.00	0.14	-0.70	-0.70	2.00	2.00	0.00
Arapahoe									
700.00	2.00	281.69	699.98	0.35	-1.71	-1.72	2.00	2.00	0.00
800.00	4.00	281.69	799.84	1.41	-6.83	-6.88	2.00	2.00	0.00
900.00	6.00	281.69	899.45	3.18	-15.37	-15.46	2.00	2.00	0.00
958.25	7.16	281.69	957.32	4.53	-21.91	-22.04	2.00	2.00	0.00
Start 6298.95 hold at 958.25 MD									
1,000.00	7.16	281.69	998.74	5.59	-27.01	-27.17	0.00	0.00	0.00
1,100.00	7.16	281.69	1,097.96	8.11	-39.22	-39.46	0.00	0.00	0.00
1,200.00	7.16	281.69	1,197.18	10.64	-51.43	-51.75	0.00	0.00	0.00
1,242.15	7.16	281.69	1,239.00	11.70	-56.58	-56.93	0.00	0.00	0.00
Laramie-Fox Hills Formation									
1,300.00	7.16	281.69	1,296.40	13.17	-63.65	-64.04	0.00	0.00	0.00
1,400.00	7.16	281.69	1,395.62	15.69	-75.86	-76.33	0.00	0.00	0.00
1,500.00	7.16	281.69	1,494.84	18.22	-88.08	-88.62	0.00	0.00	0.00
1,600.00	7.16	281.69	1,594.06	20.74	-100.29	-100.91	0.00	0.00	0.00
1,700.00	7.16	281.69	1,693.27	23.27	-112.51	-113.20	0.00	0.00	0.00
1,800.00	7.16	281.69	1,792.49	25.80	-124.72	-125.49	0.00	0.00	0.00
1,900.00	7.16	281.69	1,891.71	28.32	-136.93	-137.78	0.00	0.00	0.00
1,947.66	7.16	281.69	1,939.00	29.53	-142.75	-143.64	0.00	0.00	0.00
Pierre Formation									
2,000.00	7.16	281.69	1,990.93	30.85	-149.15	-150.07	0.00	0.00	0.00
2,100.00	7.16	281.69	2,090.15	33.38	-161.36	-162.36	0.00	0.00	0.00
2,200.00	7.16	281.69	2,189.37	35.90	-173.58	-174.65	0.00	0.00	0.00
2,300.00	7.16	281.69	2,288.59	38.43	-185.79	-186.94	0.00	0.00	0.00
2,400.00	7.16	281.69	2,387.81	40.96	-198.00	-199.23	0.00	0.00	0.00
2,411.28	7.16	281.69	2,399.00	41.24	-199.38	-200.62	0.00	0.00	0.00
Upper Pierre aquifer									
2,500.00	7.16	281.69	2,487.03	43.48	-210.22	-211.52	0.00	0.00	0.00
2,600.00	7.16	281.69	2,586.25	46.01	-222.43	-223.81	0.00	0.00	0.00
2,700.00	7.16	281.69	2,685.47	48.54	-234.65	-236.10	0.00	0.00	0.00
2,800.00	7.16	281.69	2,784.69	51.06	-246.86	-248.39	0.00	0.00	0.00
2,900.00	7.16	281.69	2,883.90	53.59	-259.08	-260.68	0.00	0.00	0.00
3,000.00	7.16	281.69	2,983.12	56.11	-271.29	-272.97	0.00	0.00	0.00
3,086.55	7.16	281.69	3,069.00	58.30	-281.86	-283.61	0.00	0.00	0.00
Base of Upper Pierre aquifer									
3,100.00	7.16	281.69	3,082.34	58.64	-283.50	-285.26	0.00	0.00	0.00
3,200.00	7.16	281.69	3,181.56	61.17	-295.72	-297.55	0.00	0.00	0.00
3,300.00	7.16	281.69	3,280.78	63.69	-307.93	-309.85	0.00	0.00	0.00
3,400.00	7.16	281.69	3,380.00	66.22	-320.15	-322.14	0.00	0.00	0.00
3,500.00	7.16	281.69	3,479.22	68.75	-332.36	-334.43	0.00	0.00	0.00
3,600.00	7.16	281.69	3,578.44	71.27	-344.57	-346.72	0.00	0.00	0.00
3,700.00	7.16	281.69	3,677.66	73.80	-356.79	-359.01	0.00	0.00	0.00

# Planning Report

<b>Database:</b>	EDT_32Bit_ODBC	<b>Local Co-ordinate Reference:</b>	Well PROSPER FARMS 4-65 2-1-6 3BH
<b>Company:</b>	CRESTONE PEAK RESOURCES	<b>TVD Reference:</b>	KB 25' @ 5656.61usft
<b>Project:</b>	ARAPAHOE COUNTY	<b>MD Reference:</b>	KB 25' @ 5656.61usft
<b>Site:</b>	SEC 2-T4S-R65W	<b>North Reference:</b>	True
<b>Well:</b>	PROSPER FARMS 4-65 2-1-6 3BH	<b>Survey Calculation Method:</b>	Minimum Curvature
<b>Wellbore:</b>	OWB		
<b>Design:</b>	PROPOSAL 1		

Planned Survey										
Measured Depth (usft)	Inclination (°)	Azimuth (°)	Vertical Depth (usft)	+N/-S (usft)	+E/-W (usft)	Vertical Section (usft)	Dogleg Rate (°/100ft)	Build Rate (°/100ft)	Turn Rate (°/100ft)	
3,800.00	7.16	281.69	3,776.88	76.33	-369.00	-371.30	0.00	0.00	0.00	
3,900.00	7.16	281.69	3,876.10	78.85	-381.22	-383.59	0.00	0.00	0.00	
4,000.00	7.16	281.69	3,975.31	81.38	-393.43	-395.88	0.00	0.00	0.00	
4,100.00	7.16	281.69	4,074.53	83.91	-405.64	-408.17	0.00	0.00	0.00	
4,190.17	7.16	281.69	4,164.00	86.18	-416.66	-419.25	0.00	0.00	0.00	
Larimer ("Parkman") sandstone										
4,200.00	7.16	281.69	4,173.75	86.43	-417.86	-420.46	0.00	0.00	0.00	
4,300.00	7.16	281.69	4,272.97	88.96	-430.07	-432.75	0.00	0.00	0.00	
4,306.08	7.16	281.69	4,279.00	89.11	-430.81	-433.49	0.00	0.00	0.00	
Pierre Formation										
4,400.00	7.16	281.69	4,372.19	91.48	-442.29	-445.04	0.00	0.00	0.00	
4,500.00	7.16	281.69	4,471.41	94.01	-454.50	-457.33	0.00	0.00	0.00	
4,600.00	7.16	281.69	4,570.63	96.54	-466.72	-469.62	0.00	0.00	0.00	
4,700.00	7.16	281.69	4,669.85	99.06	-478.93	-481.91	0.00	0.00	0.00	
4,800.00	7.16	281.69	4,769.07	101.59	-491.14	-494.20	0.00	0.00	0.00	
4,900.00	7.16	281.69	4,868.29	104.12	-503.36	-506.49	0.00	0.00	0.00	
5,000.00	7.16	281.69	4,967.51	106.64	-515.57	-518.78	0.00	0.00	0.00	
5,100.00	7.16	281.69	5,066.72	109.17	-527.79	-531.07	0.00	0.00	0.00	
5,200.00	7.16	281.69	5,165.94	111.70	-540.00	-543.36	0.00	0.00	0.00	
5,300.00	7.16	281.69	5,265.16	114.22	-552.21	-555.65	0.00	0.00	0.00	
5,324.02	7.16	281.69	5,289.00	114.83	-555.15	-558.60	0.00	0.00	0.00	
Terry ("Sussex") sandstone										
5,400.00	7.16	281.69	5,364.38	116.75	-564.43	-567.94	0.00	0.00	0.00	
5,434.89	7.16	281.69	5,399.00	117.63	-568.69	-572.22	0.00	0.00	0.00	
Pierre Formation										
5,500.00	7.16	281.69	5,463.60	119.28	-576.64	-580.23	0.00	0.00	0.00	
5,600.00	7.16	281.69	5,562.82	121.80	-588.86	-592.52	0.00	0.00	0.00	
5,700.00	7.16	281.69	5,662.04	124.33	-601.07	-604.81	0.00	0.00	0.00	
5,800.00	7.16	281.69	5,761.26	126.86	-613.28	-617.10	0.00	0.00	0.00	
5,900.00	7.16	281.69	5,860.48	129.38	-625.50	-629.39	0.00	0.00	0.00	
6,000.00	7.16	281.69	5,959.70	131.91	-637.71	-641.68	0.00	0.00	0.00	
6,059.77	7.16	281.69	6,019.00	133.42	-645.01	-649.02	0.00	0.00	0.00	
Hygiene ("Shannon") sandstone										
6,100.00	7.16	281.69	6,058.92	134.43	-649.93	-653.97	0.00	0.00	0.00	
6,200.00	7.16	281.69	6,158.13	136.96	-662.14	-666.26	0.00	0.00	0.00	
6,300.00	7.16	281.69	6,257.35	139.49	-674.36	-678.55	0.00	0.00	0.00	
6,400.00	7.16	281.69	6,356.57	142.01	-686.57	-690.84	0.00	0.00	0.00	
6,462.92	7.16	281.69	6,419.00	143.60	-694.25	-698.57	0.00	0.00	0.00	
Pierre Formation										
6,500.00	7.16	281.69	6,455.79	144.54	-698.78	-703.13	0.00	0.00	0.00	
6,600.00	7.16	281.69	6,555.01	147.07	-711.00	-715.42	0.00	0.00	0.00	
6,700.00	7.16	281.69	6,654.23	149.59	-723.21	-727.71	0.00	0.00	0.00	
6,800.00	7.16	281.69	6,753.45	152.12	-735.43	-740.00	0.00	0.00	0.00	
6,900.00	7.16	281.69	6,852.67	154.65	-747.64	-752.29	0.00	0.00	0.00	
7,000.00	7.16	281.69	6,951.89	157.17	-759.85	-764.58	0.00	0.00	0.00	
7,100.00	7.16	281.69	7,051.11	159.70	-772.07	-776.87	0.00	0.00	0.00	
7,200.00	7.16	281.69	7,150.33	162.23	-784.28	-789.16	0.00	0.00	0.00	
7,257.20	7.16	281.69	7,207.08	163.67	-791.27	-796.19	0.00	0.00	0.00	
Start DLS 10.00 TFO 168.91										
7,300.00	3.08	297.20	7,249.70	164.74	-794.91	-799.86	10.00	-9.55	36.24	
7,350.00	2.63	59.25	7,299.67	165.94	-795.11	-800.10	10.00	-0.88	244.11	
7,400.00	7.38	80.00	7,349.47	167.08	-790.96	-795.99	10.00	9.48	41.50	
7,450.00	12.32	84.38	7,398.72	168.16	-782.49	-787.55	10.00	9.89	8.75	

# Planning Report

<b>Database:</b>	EDT_32Bit_ODBC	<b>Local Co-ordinate Reference:</b>	Well PROSPER FARMS 4-65 2-1-6 3BH
<b>Company:</b>	CRESTONE PEAK RESOURCES	<b>TVD Reference:</b>	KB 25' @ 5656.61usft
<b>Project:</b>	ARAPAHOE COUNTY	<b>MD Reference:</b>	KB 25' @ 5656.61usft
<b>Site:</b>	SEC 2-T4S-R65W	<b>North Reference:</b>	True
<b>Well:</b>	PROSPER FARMS 4-65 2-1-6 3BH	<b>Survey Calculation Method:</b>	Minimum Curvature
<b>Wellbore:</b>	OWB		
<b>Design:</b>	PROPOSAL 1		

Planned Survey										
Measured Depth (usft)	Inclination (°)	Azimuth (°)	Vertical Depth (usft)	+N/-S (usft)	+E/-W (usft)	Vertical Section (usft)	Dogleg Rate (°/100ft)	Build Rate (°/100ft)	Turn Rate (°/100ft)	
7,500.00	17.30	86.27	7,447.04	169.17	-769.75	-774.86	10.00	9.95	3.77	
7,550.00	22.29	87.33	7,494.07	170.10	-752.85	-757.99	10.00	9.97	2.12	
7,600.00	27.28	88.02	7,539.45	170.94	-731.91	-737.10	10.00	9.98	1.38	
7,650.00	32.27	88.51	7,582.84	171.68	-707.10	-712.32	10.00	9.99	0.98	
7,657.32	33.00	88.57	7,589.00	171.78	-703.15	-708.38	10.00	9.99	0.82	
Sharon Springs Member										
7,700.00	37.27	88.88	7,623.90	172.33	-678.60	-683.86	10.00	9.99	0.73	
7,745.53	41.82	89.15	7,659.00	172.82	-649.62	-654.91	10.00	9.99	0.59	
Niobrara Formation										
7,750.00	42.27	89.17	7,662.32	172.87	-646.63	-651.93	10.00	9.99	0.53	
7,800.00	47.26	89.41	7,697.81	173.30	-611.44	-616.76	10.00	9.99	0.48	
7,850.00	52.26	89.62	7,730.09	173.62	-573.28	-578.64	10.00	10.00	0.41	
7,900.00	57.26	89.80	7,758.94	173.82	-532.46	-537.84	10.00	10.00	0.36	
7,950.00	62.26	89.96	7,784.11	173.91	-489.28	-494.69	10.00	10.00	0.32	
8,000.00	67.25	90.11	7,805.43	173.88	-444.07	-449.50	10.00	10.00	0.29	
8,050.00	72.25	90.24	7,822.73	173.74	-397.17	-402.63	10.00	10.00	0.27	
8,100.00	77.25	90.37	7,835.87	173.48	-348.95	-354.42	10.00	10.00	0.26	
8,150.00	82.25	90.50	7,844.77	173.10	-299.76	-305.25	10.00	10.00	0.25	
8,200.00	87.25	90.62	7,849.34	172.62	-249.99	-255.49	10.00	10.00	0.24	
8,227.52	90.00	90.68	7,850.00	172.30	-222.48	-227.98	10.00	10.00	0.24	
Start 7588.67 hold at 8227.52 MD										
8,300.00	90.00	90.68	7,850.00	171.44	-150.01	-155.52	0.00	0.00	0.00	
8,400.00	90.00	90.68	7,850.00	170.25	-50.02	-55.54	0.00	0.00	0.00	
8,500.00	90.00	90.68	7,850.00	169.05	49.98	44.44	0.00	0.00	0.00	
8,600.00	90.00	90.68	7,850.00	167.86	149.97	144.42	0.00	0.00	0.00	
8,700.00	90.00	90.68	7,850.00	166.66	249.96	244.39	0.00	0.00	0.00	
8,800.00	90.00	90.68	7,850.00	165.47	349.96	344.37	0.00	0.00	0.00	
8,900.00	90.00	90.68	7,850.00	164.28	449.95	444.35	0.00	0.00	0.00	
9,000.00	90.00	90.68	7,850.00	163.08	549.94	544.33	0.00	0.00	0.00	
9,100.00	90.00	90.68	7,850.00	161.89	649.93	644.31	0.00	0.00	0.00	
9,200.00	90.00	90.68	7,850.00	160.69	749.93	744.29	0.00	0.00	0.00	
9,300.00	90.00	90.68	7,850.00	159.50	849.92	844.27	0.00	0.00	0.00	
9,400.00	90.00	90.68	7,850.00	158.31	949.91	944.25	0.00	0.00	0.00	
9,500.00	90.00	90.68	7,850.00	157.11	1,049.91	1,044.22	0.00	0.00	0.00	
9,600.00	90.00	90.68	7,850.00	155.92	1,149.90	1,144.20	0.00	0.00	0.00	
9,700.00	90.00	90.68	7,850.00	154.72	1,249.89	1,244.18	0.00	0.00	0.00	
9,800.00	90.00	90.68	7,850.00	153.53	1,349.88	1,344.16	0.00	0.00	0.00	
9,900.00	90.00	90.68	7,850.00	152.34	1,449.88	1,444.14	0.00	0.00	0.00	
10,000.00	90.00	90.68	7,850.00	151.14	1,549.87	1,544.12	0.00	0.00	0.00	
10,100.00	90.00	90.68	7,850.00	149.95	1,649.86	1,644.10	0.00	0.00	0.00	
10,200.00	90.00	90.68	7,850.00	148.75	1,749.86	1,744.07	0.00	0.00	0.00	
10,300.00	90.00	90.68	7,850.00	147.56	1,849.85	1,844.05	0.00	0.00	0.00	
10,400.00	90.00	90.68	7,850.00	146.37	1,949.84	1,944.03	0.00	0.00	0.00	
10,500.00	90.00	90.68	7,850.00	145.17	2,049.84	2,044.01	0.00	0.00	0.00	
10,600.00	90.00	90.68	7,850.00	143.98	2,149.83	2,143.99	0.00	0.00	0.00	
10,700.00	90.00	90.68	7,850.00	142.78	2,249.82	2,243.97	0.00	0.00	0.00	
10,800.00	90.00	90.68	7,850.00	141.59	2,349.81	2,343.95	0.00	0.00	0.00	
10,900.00	90.00	90.68	7,850.00	140.40	2,449.81	2,443.92	0.00	0.00	0.00	
11,000.00	90.00	90.68	7,850.00	139.20	2,549.80	2,543.90	0.00	0.00	0.00	
11,100.00	90.00	90.68	7,850.00	138.01	2,649.79	2,643.88	0.00	0.00	0.00	
11,200.00	90.00	90.68	7,850.00	136.81	2,749.79	2,743.86	0.00	0.00	0.00	
11,300.00	90.00	90.68	7,850.00	135.62	2,849.78	2,843.84	0.00	0.00	0.00	
11,400.00	90.00	90.68	7,850.00	134.43	2,949.77	2,943.82	0.00	0.00	0.00	

# Planning Report

<b>Database:</b>	EDT_32Bit_ODBC	<b>Local Co-ordinate Reference:</b>	Well PROSPER FARMS 4-65 2-1-6 3BH
<b>Company:</b>	CRESTONE PEAK RESOURCES	<b>TVD Reference:</b>	KB 25' @ 5656.61usft
<b>Project:</b>	ARAPAHOE COUNTY	<b>MD Reference:</b>	KB 25' @ 5656.61usft
<b>Site:</b>	SEC 2-T4S-R65W	<b>North Reference:</b>	True
<b>Well:</b>	PROSPER FARMS 4-65 2-1-6 3BH	<b>Survey Calculation Method:</b>	Minimum Curvature
<b>Wellbore:</b>	OWB		
<b>Design:</b>	PROPOSAL 1		

Planned Survey									
Measured Depth (usft)	Inclination (°)	Azimuth (°)	Vertical Depth (usft)	+N/-S (usft)	+E/-W (usft)	Vertical Section (usft)	Dogleg Rate (°/100ft)	Build Rate (°/100ft)	Turn Rate (°/100ft)
11,500.00	90.00	90.68	7,850.00	133.23	3,049.76	3,043.80	0.00	0.00	0.00
11,600.00	90.00	90.68	7,850.00	132.04	3,149.76	3,143.78	0.00	0.00	0.00
11,700.00	90.00	90.68	7,850.00	130.85	3,249.75	3,243.75	0.00	0.00	0.00
11,800.00	90.00	90.68	7,850.00	129.65	3,349.74	3,343.73	0.00	0.00	0.00
11,900.00	90.00	90.68	7,850.00	128.46	3,449.74	3,443.71	0.00	0.00	0.00
12,000.00	90.00	90.68	7,850.00	127.26	3,549.73	3,543.69	0.00	0.00	0.00
12,100.00	90.00	90.68	7,850.00	126.07	3,649.72	3,643.67	0.00	0.00	0.00
12,200.00	90.00	90.68	7,850.00	124.88	3,749.71	3,743.65	0.00	0.00	0.00
12,300.00	90.00	90.68	7,850.00	123.68	3,849.71	3,843.63	0.00	0.00	0.00
12,400.00	90.00	90.68	7,850.00	122.49	3,949.70	3,943.60	0.00	0.00	0.00
12,500.00	90.00	90.68	7,850.00	121.29	4,049.69	4,043.58	0.00	0.00	0.00
12,600.00	90.00	90.68	7,850.00	120.10	4,149.69	4,143.56	0.00	0.00	0.00
12,700.00	90.00	90.68	7,850.00	118.91	4,249.68	4,243.54	0.00	0.00	0.00
12,800.00	90.00	90.68	7,850.00	117.71	4,349.67	4,343.52	0.00	0.00	0.00
12,900.00	90.00	90.68	7,850.00	116.52	4,449.66	4,443.50	0.00	0.00	0.00
13,000.00	90.00	90.68	7,850.00	115.32	4,549.66	4,543.48	0.00	0.00	0.00
13,100.00	90.00	90.68	7,850.00	114.13	4,649.65	4,643.45	0.00	0.00	0.00
13,200.00	90.00	90.68	7,850.00	112.94	4,749.64	4,743.43	0.00	0.00	0.00
13,300.00	90.00	90.68	7,850.00	111.74	4,849.64	4,843.41	0.00	0.00	0.00
13,400.00	90.00	90.68	7,850.00	110.55	4,949.63	4,943.39	0.00	0.00	0.00
13,500.00	90.00	90.68	7,850.00	109.35	5,049.62	5,043.37	0.00	0.00	0.00
13,600.00	90.00	90.68	7,850.00	108.16	5,149.61	5,143.35	0.00	0.00	0.00
13,700.00	90.00	90.68	7,850.00	106.97	5,249.61	5,243.33	0.00	0.00	0.00
13,800.00	90.00	90.68	7,850.00	105.77	5,349.60	5,343.30	0.00	0.00	0.00
13,900.00	90.00	90.68	7,850.00	104.58	5,449.59	5,443.28	0.00	0.00	0.00
14,000.00	90.00	90.68	7,850.00	103.38	5,549.59	5,543.26	0.00	0.00	0.00
14,100.00	90.00	90.68	7,850.00	102.19	5,649.58	5,643.24	0.00	0.00	0.00
14,200.00	90.00	90.68	7,850.00	101.00	5,749.57	5,743.22	0.00	0.00	0.00
14,300.00	90.00	90.68	7,850.00	99.80	5,849.56	5,843.20	0.00	0.00	0.00
14,400.00	90.00	90.68	7,850.00	98.61	5,949.56	5,943.18	0.00	0.00	0.00
14,500.00	90.00	90.68	7,850.00	97.41	6,049.55	6,043.16	0.00	0.00	0.00
14,600.00	90.00	90.68	7,850.00	96.22	6,149.54	6,143.13	0.00	0.00	0.00
14,700.00	90.00	90.68	7,850.00	95.03	6,249.54	6,243.11	0.00	0.00	0.00
14,800.00	90.00	90.68	7,850.00	93.83	6,349.53	6,343.09	0.00	0.00	0.00
14,900.00	90.00	90.68	7,850.00	92.64	6,449.52	6,443.07	0.00	0.00	0.00
15,000.00	90.00	90.68	7,850.00	91.44	6,549.51	6,543.05	0.00	0.00	0.00
15,100.00	90.00	90.68	7,850.00	90.25	6,649.51	6,643.03	0.00	0.00	0.00
15,200.00	90.00	90.68	7,850.00	89.06	6,749.50	6,743.01	0.00	0.00	0.00
15,300.00	90.00	90.68	7,850.00	87.86	6,849.49	6,842.98	0.00	0.00	0.00
15,400.00	90.00	90.68	7,850.00	86.67	6,949.49	6,942.96	0.00	0.00	0.00
15,500.00	90.00	90.68	7,850.00	85.48	7,049.48	7,042.94	0.00	0.00	0.00
15,600.00	90.00	90.68	7,850.00	84.28	7,149.47	7,142.92	0.00	0.00	0.00
15,700.00	90.00	90.68	7,850.00	83.09	7,249.46	7,242.90	0.00	0.00	0.00
15,800.00	90.00	90.68	7,850.00	81.89	7,349.46	7,342.88	0.00	0.00	0.00
15,816.19	90.00	90.68	7,850.00	81.70	7,365.65	7,359.07	0.00	0.00	0.00
Start DLS 2.00 TFO 90.00									
15,900.00	90.00	92.36	7,850.00	79.47	7,449.42	7,442.87	2.00	0.00	2.00
15,994.20	90.00	94.24	7,850.00	74.05	7,543.46	7,537.03	2.00	0.00	2.00
Start 7721.75 hold at 15994.19 MD									
16,000.00	90.00	94.24	7,850.00	73.62	7,549.25	7,542.83	0.00	0.00	0.00
16,100.00	90.00	94.24	7,850.00	66.22	7,648.97	7,642.74	0.00	0.00	0.00
16,200.00	90.00	94.24	7,850.00	58.82	7,748.70	7,742.66	0.00	0.00	0.00
16,300.00	90.00	94.24	7,850.00	51.42	7,848.42	7,842.57	0.00	0.00	0.00
16,400.00	90.00	94.24	7,850.00	44.02	7,948.15	7,942.49	0.00	0.00	0.00

# Planning Report

<b>Database:</b>	EDT_32Bit_ODBC	<b>Local Co-ordinate Reference:</b>	Well PROSPER FARMS 4-65 2-1-6 3BH
<b>Company:</b>	CRESTONE PEAK RESOURCES	<b>TVD Reference:</b>	KB 25' @ 5656.61usft
<b>Project:</b>	ARAPAHOE COUNTY	<b>MD Reference:</b>	KB 25' @ 5656.61usft
<b>Site:</b>	SEC 2-T4S-R65W	<b>North Reference:</b>	True
<b>Well:</b>	PROSPER FARMS 4-65 2-1-6 3BH	<b>Survey Calculation Method:</b>	Minimum Curvature
<b>Wellbore:</b>	OWB		
<b>Design:</b>	PROPOSAL 1		

Planned Survey									
Measured Depth (usft)	Inclination (°)	Azimuth (°)	Vertical Depth (usft)	+N/-S (usft)	+E/-W (usft)	Vertical Section (usft)	Dogleg Rate (°/100ft)	Build Rate (°/100ft)	Turn Rate (°/100ft)
16,500.00	90.00	94.24	7,850.00	36.62	8,047.88	8,042.40	0.00	0.00	0.00
16,600.00	90.00	94.24	7,850.00	29.21	8,147.60	8,142.32	0.00	0.00	0.00
16,700.00	90.00	94.24	7,850.00	21.81	8,247.33	8,242.23	0.00	0.00	0.00
16,800.00	90.00	94.24	7,850.00	14.41	8,347.05	8,342.14	0.00	0.00	0.00
16,900.00	90.00	94.24	7,850.00	7.01	8,446.78	8,442.06	0.00	0.00	0.00
17,000.00	90.00	94.24	7,850.00	-0.39	8,546.50	8,541.97	0.00	0.00	0.00
17,100.00	90.00	94.24	7,850.00	-7.79	8,646.23	8,641.89	0.00	0.00	0.00
17,200.00	90.00	94.24	7,850.00	-15.19	8,745.96	8,741.80	0.00	0.00	0.00
17,300.00	90.00	94.24	7,850.00	-22.59	8,845.68	8,841.71	0.00	0.00	0.00
17,400.00	90.00	94.24	7,850.00	-29.99	8,945.41	8,941.63	0.00	0.00	0.00
17,500.00	90.00	94.24	7,850.00	-37.39	9,045.13	9,041.54	0.00	0.00	0.00
17,600.00	90.00	94.24	7,850.00	-44.79	9,144.86	9,141.46	0.00	0.00	0.00
17,700.00	90.00	94.24	7,850.00	-52.19	9,244.59	9,241.37	0.00	0.00	0.00
17,800.00	90.00	94.24	7,850.00	-59.59	9,344.31	9,341.28	0.00	0.00	0.00
17,900.00	90.00	94.24	7,850.00	-66.99	9,444.04	9,441.20	0.00	0.00	0.00
18,000.00	90.00	94.24	7,850.00	-74.39	9,543.76	9,541.11	0.00	0.00	0.00
18,100.00	90.00	94.24	7,850.00	-81.80	9,643.49	9,641.03	0.00	0.00	0.00
18,200.00	90.00	94.24	7,850.00	-89.20	9,743.21	9,740.94	0.00	0.00	0.00
18,300.00	90.00	94.24	7,850.00	-96.60	9,842.94	9,840.85	0.00	0.00	0.00
18,400.00	90.00	94.24	7,850.00	-104.00	9,942.67	9,940.77	0.00	0.00	0.00
18,500.00	90.00	94.24	7,850.00	-111.40	10,042.39	10,040.68	0.00	0.00	0.00
18,600.00	90.00	94.24	7,850.00	-118.80	10,142.12	10,140.60	0.00	0.00	0.00
18,700.00	90.00	94.24	7,850.00	-126.20	10,241.84	10,240.51	0.00	0.00	0.00
18,800.00	90.00	94.24	7,850.00	-133.60	10,341.57	10,340.42	0.00	0.00	0.00
18,900.00	90.00	94.24	7,850.00	-141.00	10,441.29	10,440.34	0.00	0.00	0.00
19,000.00	90.00	94.24	7,850.00	-148.40	10,541.02	10,540.25	0.00	0.00	0.00
19,100.00	90.00	94.24	7,850.00	-155.80	10,640.75	10,640.17	0.00	0.00	0.00
19,200.00	90.00	94.24	7,850.00	-163.20	10,740.47	10,740.08	0.00	0.00	0.00
19,300.00	90.00	94.24	7,850.00	-170.60	10,840.20	10,840.00	0.00	0.00	0.00
19,400.00	90.00	94.24	7,850.00	-178.00	10,939.92	10,939.91	0.00	0.00	0.00
19,500.00	90.00	94.24	7,850.00	-185.40	11,039.65	11,039.82	0.00	0.00	0.00
19,600.00	90.00	94.24	7,850.00	-192.80	11,139.38	11,139.74	0.00	0.00	0.00
19,700.00	90.00	94.24	7,850.00	-200.21	11,239.10	11,239.65	0.00	0.00	0.00
19,800.00	90.00	94.24	7,850.00	-207.61	11,338.83	11,339.57	0.00	0.00	0.00
19,900.00	90.00	94.24	7,850.00	-215.01	11,438.55	11,439.48	0.00	0.00	0.00
20,000.00	90.00	94.24	7,850.00	-222.41	11,538.28	11,539.39	0.00	0.00	0.00
20,100.00	90.00	94.24	7,850.00	-229.81	11,638.00	11,639.31	0.00	0.00	0.00
20,200.00	90.00	94.24	7,850.00	-237.21	11,737.73	11,739.22	0.00	0.00	0.00
20,300.00	90.00	94.24	7,850.00	-244.61	11,837.46	11,839.14	0.00	0.00	0.00
20,400.00	90.00	94.24	7,850.00	-252.01	11,937.18	11,939.05	0.00	0.00	0.00
20,500.00	90.00	94.24	7,850.00	-259.41	12,036.91	12,038.96	0.00	0.00	0.00
20,600.00	90.00	94.24	7,850.00	-266.81	12,136.63	12,138.88	0.00	0.00	0.00
20,700.00	90.00	94.24	7,850.00	-274.21	12,236.36	12,238.79	0.00	0.00	0.00
20,800.00	90.00	94.24	7,850.00	-281.61	12,336.08	12,338.71	0.00	0.00	0.00
20,900.00	90.00	94.24	7,850.00	-289.01	12,435.81	12,438.62	0.00	0.00	0.00
21,000.00	90.00	94.24	7,850.00	-296.41	12,535.54	12,538.53	0.00	0.00	0.00
21,100.00	90.00	94.24	7,850.00	-303.81	12,635.26	12,638.45	0.00	0.00	0.00
21,200.00	90.00	94.24	7,850.00	-311.22	12,734.99	12,738.36	0.00	0.00	0.00
21,300.00	90.00	94.24	7,850.00	-318.62	12,834.71	12,838.28	0.00	0.00	0.00
21,400.00	90.00	94.24	7,850.00	-326.02	12,934.44	12,938.19	0.00	0.00	0.00
21,500.00	90.00	94.24	7,850.00	-333.42	13,034.16	13,038.11	0.00	0.00	0.00
21,600.00	90.00	94.24	7,850.00	-340.82	13,133.89	13,138.02	0.00	0.00	0.00
21,700.00	90.00	94.24	7,850.00	-348.22	13,233.62	13,237.93	0.00	0.00	0.00
21,800.00	90.00	94.24	7,850.00	-355.62	13,333.34	13,337.85	0.00	0.00	0.00



## Planning Report

<b>Database:</b>	EDT_32Bit_ODBC	<b>Local Co-ordinate Reference:</b>	Well PROSPER FARMS 4-65 2-1-6 3BH
<b>Company:</b>	CRESTONE PEAK RESOURCES	<b>TVD Reference:</b>	KB 25' @ 5656.61usft
<b>Project:</b>	ARAPAHOE COUNTY	<b>MD Reference:</b>	KB 25' @ 5656.61usft
<b>Site:</b>	SEC 2-T4S-R65W	<b>North Reference:</b>	True
<b>Well:</b>	PROSPER FARMS 4-65 2-1-6 3BH	<b>Survey Calculation Method:</b>	Minimum Curvature
<b>Wellbore:</b>	OWB		
<b>Design:</b>	PROPOSAL 1		

Planned Survey										
Measured Depth (usft)	Inclination (°)	Azimuth (°)	Vertical Depth (usft)	+N/-S (usft)	+E/-W (usft)	Vertical Section (usft)	Dogleg Rate (°/100ft)	Build Rate (°/100ft)	Turn Rate (°/100ft)	
21,900.00	90.00	94.24	7,850.00	-363.02	13,433.07	13,437.76	0.00	0.00	0.00	
22,000.00	90.00	94.24	7,850.00	-370.42	13,532.79	13,537.68	0.00	0.00	0.00	
22,100.00	90.00	94.24	7,850.00	-377.82	13,632.52	13,637.59	0.00	0.00	0.00	
22,200.00	90.00	94.24	7,850.00	-385.22	13,732.25	13,737.50	0.00	0.00	0.00	
22,300.00	90.00	94.24	7,850.00	-392.62	13,831.97	13,837.42	0.00	0.00	0.00	
22,400.00	90.00	94.24	7,850.00	-400.02	13,931.70	13,937.33	0.00	0.00	0.00	
22,500.00	90.00	94.24	7,850.00	-407.42	14,031.42	14,037.25	0.00	0.00	0.00	
22,600.00	90.00	94.24	7,850.00	-414.82	14,131.15	14,137.16	0.00	0.00	0.00	
22,700.00	90.00	94.24	7,850.00	-422.22	14,230.87	14,237.07	0.00	0.00	0.00	
22,800.00	90.00	94.24	7,850.00	-429.63	14,330.60	14,336.99	0.00	0.00	0.00	
22,900.00	90.00	94.24	7,850.00	-437.03	14,430.33	14,436.90	0.00	0.00	0.00	
23,000.00	90.00	94.24	7,850.00	-444.43	14,530.05	14,536.82	0.00	0.00	0.00	
23,100.00	90.00	94.24	7,850.00	-451.83	14,629.78	14,636.73	0.00	0.00	0.00	
23,200.00	90.00	94.24	7,850.00	-459.23	14,729.50	14,736.64	0.00	0.00	0.00	
23,300.00	90.00	94.24	7,850.00	-466.63	14,829.23	14,836.56	0.00	0.00	0.00	
23,400.00	90.00	94.24	7,850.00	-474.03	14,928.95	14,936.47	0.00	0.00	0.00	
23,500.00	90.00	94.24	7,850.00	-481.43	15,028.68	15,036.39	0.00	0.00	0.00	
23,600.00	90.00	94.24	7,850.00	-488.83	15,128.41	15,136.30	0.00	0.00	0.00	
23,700.00	90.00	94.24	7,850.00	-496.23	15,228.13	15,236.22	0.00	0.00	0.00	
23,715.94	90.00	94.24	7,850.00	-497.41	15,244.03	15,252.14	0.00	0.00	0.00	
TD at 23715.94										

Design Targets									
Target Name - hit/miss target - Shape	Dip Angle (°)	Dip Dir. (°)	TVD (usft)	+N/-S (usft)	+E/-W (usft)	Northing (usft)	Easting (usft)	Latitude	Longitude
MID-PROSPER FARMS - plan hits target center - Point	0.00	0.00	7,850.00	81.70	7,365.65	1,691,912.45	3,249,598.75	39.729756°N	104.612566°W
PBHL-PROSPER FARM - plan hits target center - Point	0.00	0.00	7,850.00	-497.41	15,244.03	1,691,408.05	3,257,482.24	39.728157°N	104.584556°W
LP-PROSPER FARMS 4 - plan hits target center - Point	0.00	0.00	7,850.00	172.30	-222.48	1,691,931.11	3,242,010.13	39.730008°N	104.639544°W

## Planning Report

<b>Database:</b>	EDT_32Bit_ODBC	<b>Local Co-ordinate Reference:</b>	Well PROSPER FARMS 4-65 2-1-6 3BH
<b>Company:</b>	CRESTONE PEAK RESOURCES	<b>TVD Reference:</b>	KB 25' @ 5656.61usft
<b>Project:</b>	ARAPAHOE COUNTY	<b>MD Reference:</b>	KB 25' @ 5656.61usft
<b>Site:</b>	SEC 2-T4S-R65W	<b>North Reference:</b>	True
<b>Well:</b>	PROSPER FARMS 4-65 2-1-6 3BH	<b>Survey Calculation Method:</b>	Minimum Curvature
<b>Wellbore:</b>	OWB		
<b>Design:</b>	PROPOSAL 1		

Formations						
Measured Depth (usft)	Vertical Depth (usft)	Name	Lithology	Dip (°)	Dip Direction (°)	
24.00	24.00	Denver				
664.01	664.00	Arapahoe				
1,242.15	1,239.00	Laramie-Fox Hills Formation				
1,947.66	1,939.00	Pierre Formation				
2,411.28	2,399.00	Upper Pierre aquifer				
3,086.55	3,069.00	Base of Upper Pierre aquifer				
4,190.17	4,164.00	Larimer ("Parkman") sandstone				
4,306.08	4,279.00	Pierre Formation				
5,324.02	5,289.00	Terry ("Sussex") sandstone				
5,434.89	5,399.00	Pierre Formation				
6,059.77	6,019.00	Hygiene ("Shannon") sandstone				
6,462.92	6,419.00	Pierre Formation				
7,657.32	7,589.00	Sharon Springs Member				
7,745.53	7,659.00	Niobrara Formation				

Plan Annotations					
Measured Depth (usft)	Vertical Depth (usft)	Local Coordinates			
		+N/-S (usft)	+E/-W (usft)	Comment	
600.00	600.00	0.00	0.00	Start Build 2.00	
958.25	957.32	4.53	-21.91	Start 6298.95 hold at 958.25 MD	
7,257.20	7,207.08	163.67	-791.27	Start DLS 10.00 TFO 168.91	
8,227.52	7,850.00	172.30	-222.48	Start 7588.67 hold at 8227.52 MD	
15,816.19	7,850.00	81.70	7,365.65	Start DLS 2.00 TFO 90.00	
15,994.20	7,850.00	74.05	7,543.46	Start 7721.75 hold at 15994.19 MD	
23,715.94	7,850.00	-497.41	15,244.03	TD at 23715.94	