

CRESTONE PEAK RESOURCES

PROSPER FARMS #4-65 2-1-6 2BH
 NW¹/₄ SW¹/₄ SECTION 2, T4S, R65W, 6TH P.M.
 ARAPAHOE COUNTY, STATE OF COLORADO

NOTES

1. DISTANCES ARE MEASURED PERPENDICULARLY TO THE NEAREST SECTION LINE.
2. THIS MAP DOES NOT REPRESENT A MONUMENTED BOUNDARY SURVEY. SIXTEENTH CORNER LOCATIONS ARE CALCULATED ONLY, UNLESS OTHERWISE NOTED.
3. BOTTOM HOLE AND HORIZONTAL COMPLETION ZONE LOCATIONS HAVE BEEN PROVIDED BY OTHERS.






BASIS OF BEARINGS

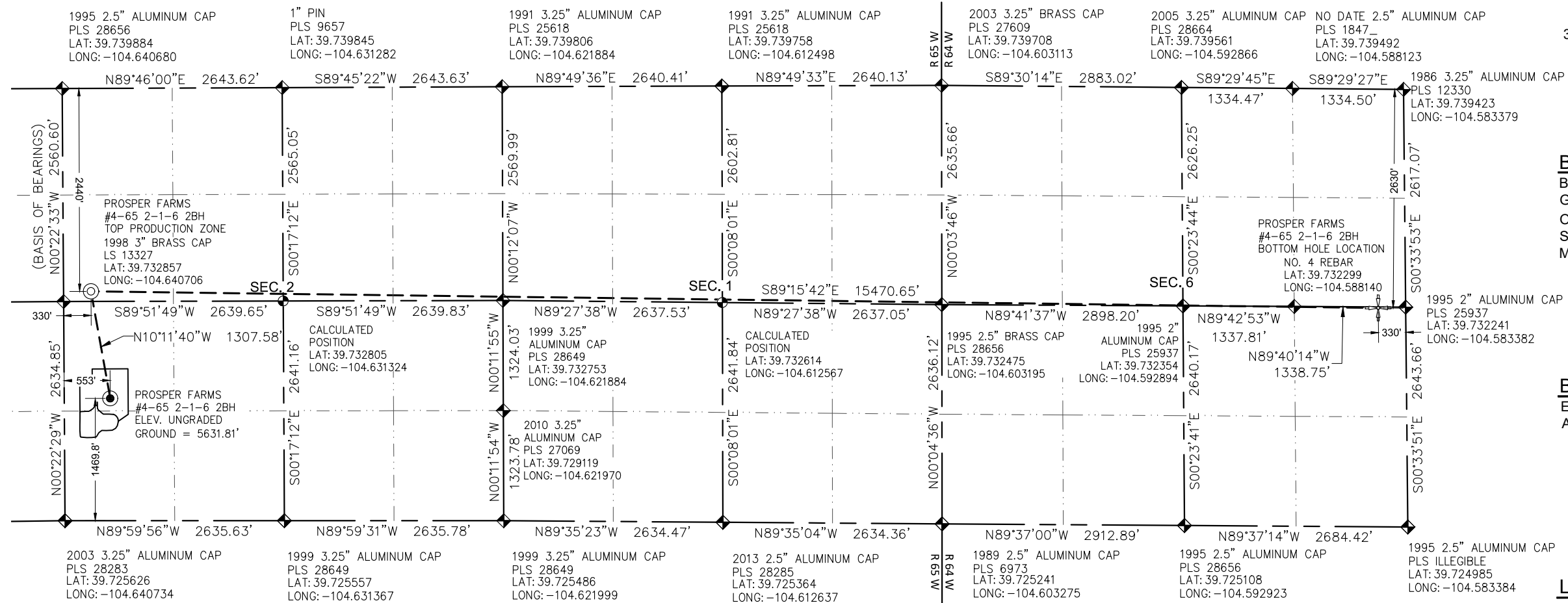
BEARINGS SHOWN HEREON ARE BASED ON GPS OBSERVATIONS ON THE WEST LINE OF THE NW¹/₄ OF SECTION 2, TOWNSHIP 4 SOUTH, RANGE 65 WEST, SIXTH PRINCIPAL MERIDIAN, MONUMENTED AS SHOWN.

BASIS OF ELEVATION

ELEVATIONS SHOWN HEREON ARE NAVD88 AND ARE BASED ON GPS OBSERVATIONS

LEGEND

-  ALIQUOT CORNER AS DESCRIBED
-  ALIQUOT CORNER, CALCULATED
-  WELL HEAD SURFACE LOCATION
-  TOP PRODUCTION ZONE
-  BOTTOM HOLE LOCATION

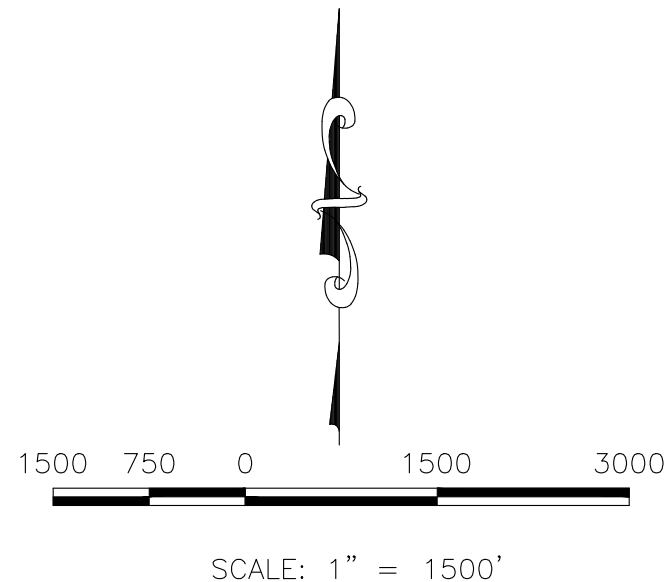


CERTIFICATE

WESTWOOD PROFESSIONAL SERVICES HAS DETERMINED THAT THE SURFACE LOCATION OF THE PROPOSED WELL IDENTIFIED AS THE PROSPER FARMS #4-65 2-1-6 2BH TO BE 553 FEET FROM THE WEST LINE AND 1469.8 FEET FROM THE SOUTH LINE OF SECTION 2, TOWNSHIP 4 SOUTH, RANGE 65 WEST OF THE SIXTH PRINCIPAL MERIDIAN, ARAPAHOE COUNTY, STATE OF COLORADO.



PATRICK M. STEENBURG, COLORADO PLS 38004 11/18/2022
 FOR AND ON BEHALF OF
 WESTWOOD PROFESSIONAL SERVICES.



WELL HEAD SURFACE LOCATION	TOP PRODUCTION ZONE	BOTTOM HOLE LOCATION
NAD 83 LATITUDE = 39.729645 LONGITUDE = -104.638753	NAD 83 LATITUDE = 39.733183 LONGITUDE = -104.639532	NAD 83 LATITUDE = 39.732221 LONGITUDE = -104.584555
STATE PLANE NAD 83 (Co. Central) N: 1,691,801.02 E: 3,242,233.88	STATE PLANE NAD 83 (Co. Central) N: 1,693,087.62 E: 3,242,002.53	STATE PLANE NAD 83 (Co. Central) N: 1,692,888.35 E: 3,257,467.71

Westwood	10333 E DRY CREEK RD. SUITE 240 ENGLEWOOD, CO 80112 TEL: 720.482.9526	Westwoods.com Westwood Professional Services, Inc.	CRESTONE PEAK RESOURCES OPERATING LLC ATTN: KATHY DENZER 34501 E. QUINCY AVE., BUILDING 1 WATKINS, CO 80137 ATTN: (720) 410-8519	WELL RELOCATION WELL RELOCATION Revisions No.
CRESTONE PEAK RESOURCES OPERATING LLC ATTN: KATHY DENZER 34501 E. QUINCY AVE., BUILDING 1 WATKINS, CO 80137 ATTN: (720) 410-8519	WELL LOCATION PLAT CRESTONE PEAK RESOURCES PROSPER FARMS #4-65 2-1-6 2BH	SCALE: AS SHOWN FILE NO: R0031976.00	DRAWN BY: MJP	DATE: JULY, 2022
SHEET NUMBER 4 OF 11	CHECKED BY: PMS	DATE: JULY, 2022	PDOP: 1.4	DATE: 07-13-22 10-28-19