

CRESTONE PEAK RESOURCES

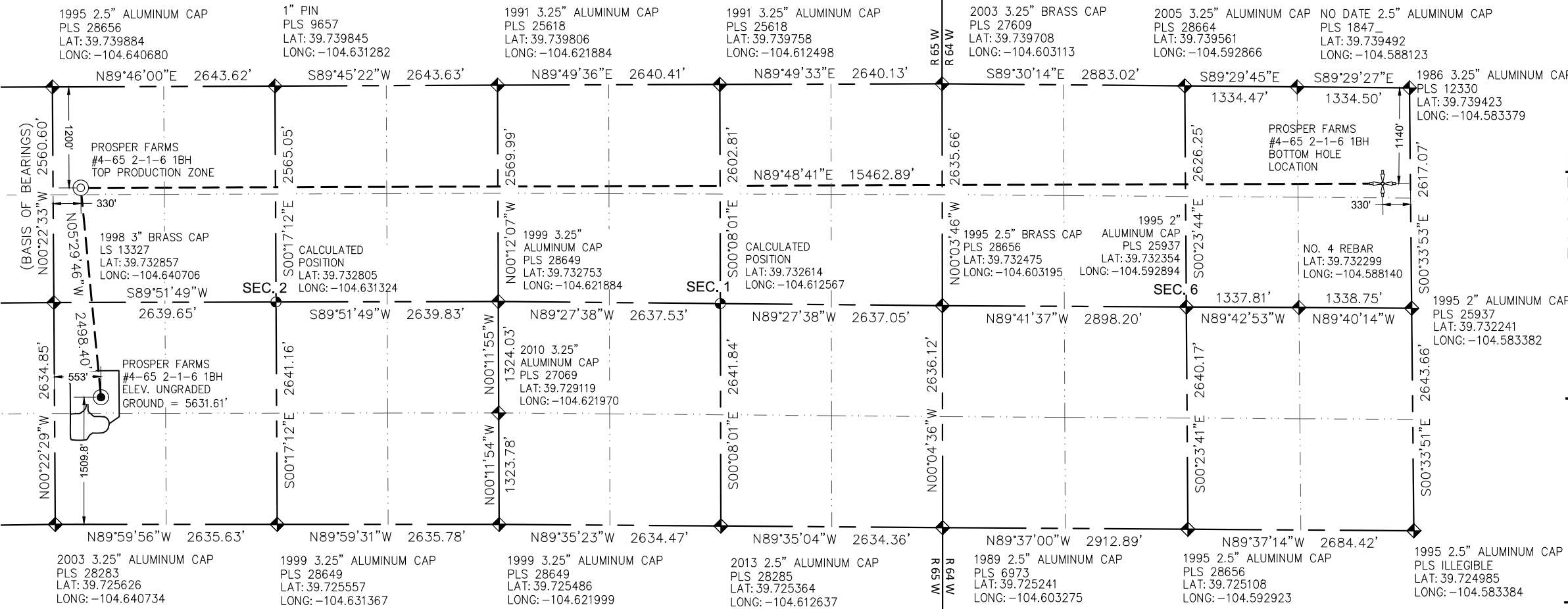
PROSPER FARMS #4-65 2-1-6 1BH  
NW¼ SW¼ SECTION 2, T4S, R65W, 6TH P.M.  
ARAPAHOE COUNTY, STATE OF COLORADO

- NOTES
- 1. DISTANCES ARE MEASURED PERPENDICULARLY TO THE NEAREST SECTION LINE.
  - 2. THIS MAP DOES NOT REPRESENT A MONUMENTED BOUNDARY SURVEY. SIXTEENTH CORNER LOCATIONS ARE CALCULATED ONLY, UNLESS OTHERWISE NOTED.
  - 3. BOTTOM HOLE AND HORIZONTAL COMPLETION ZONE LOCATIONS HAVE BEEN PROVIDED BY OTHERS.

BASIS OF BEARINGS  
BEARINGS SHOWN HEREON ARE BASED ON GPS OBSERVATIONS ON THE WEST LINE OF THE NW¼ OF SECTION 2, TOWNSHIP 4 SOUTH, RANGE 65 WEST, SIXTH PRINCIPAL MERIDIAN, MONUMENTED AS SHOWN.

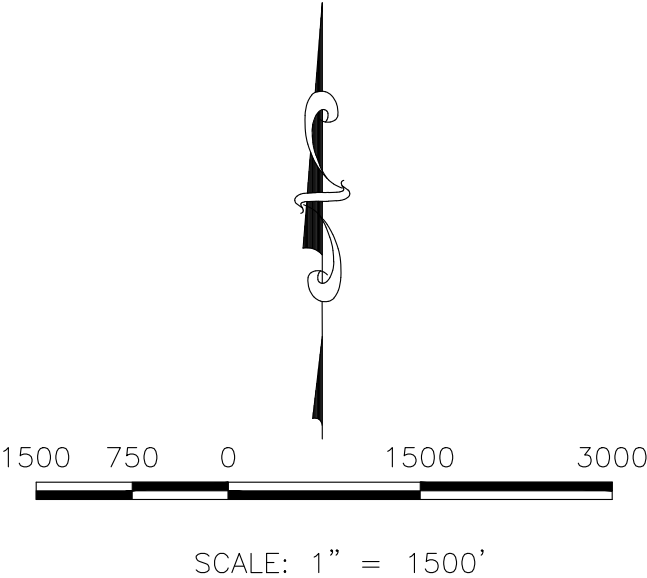
BASIS OF ELEVATION  
ELEVATIONS SHOWN HEREON ARE NAVD88 AND ARE BASED ON GPS OBSERVATIONS

- LEGEND
- ALIQUOT CORNER AS DESCRIBED
  - ALIQUOT CORNER, CALCULATED
  - WELL HEAD SURFACE LOCATION
  - TOP PRODUCTION ZONE
  - BOTTOM HOLE LOCATION



CERTIFICATE  
WESTWOOD PROFESSIONAL SERVICES HAS DETERMINED THAT THE SURFACE LOCATION OF THE PROPOSED WELL IDENTIFIED AS THE PROSPER FARMS #4-65 2-1-6 1BH TO BE 553 FEET FROM THE WEST LINE AND 1509.8 FEET FROM THE SOUTH LINE OF SECTION 2, TOWNSHIP 4 SOUTH, RANGE 65 WEST OF THE SIXTH PRINCIPAL MERIDIAN, ARAPAHOE COUNTY, STATE OF COLORADO.

PATRICK M. STEENBURG, COLORADO PLS 38004  
FOR AND ON BEHALF OF  
WESTWOOD PROFESSIONAL SERVICES.



WELL HEAD SURFACE LOCATION	TOP PRODUCTION ZONE	BOTTOM HOLE LOCATION
NAD 83 LATITUDE = 39.729755 LONGITUDE = -104.638753	NAD 83 LATITUDE = 39.736586 LONGITUDE = -104.639519	NAD 83 LATITUDE = 39.736311 LONGITUDE = -104.584553
STATE PLANE NAD 83 (Co. Central) N: 1,691,841.01 E: 3,242,233.61	STATE PLANE NAD 83 (Co. Central) N: 1,694,327.26 E: 3,241,994.40	STATE PLANE NAD 83 (Co. Central) N: 1,694,378.13 E: 3,257,453.03

CRESTONE PEAK RESOURCES OPERATING LLC ATTN: KATHY DENZER 34501 E. QUINCY AVE., BUILDING 1 WATKINS, CO 80137 ATTN: (720) 410-8519	WELL RELOCATION 2 WELL RELOCATION 1 Revisions No.	07-13-22 10-28-19 Date
CRESTONE PEAK RESOURCES WELL LOCATION PLAT CRESTONE PEAK RESOURCES PROSPER FARMS #4-65 2-1-6 1BH	SCALE: AS SHOWN FILE NO: R0031976.00	PDOP: 1.4 DRAWN BY: MJP CHECKED BY: PMS DATE: JULY, 2022
SHEET NUMBER 2 OF 11		