

# **CRESTONE PEAK RESOURCES**

**ARAPAHOE COUNTY**

**SEC 2-T4S-R65W**

**PROSPER FARMS 4-65 2-1-6 1AH**

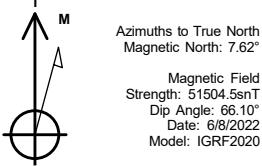
**OWB**

**Plan: PROPOSAL 1**

## **Standard Planning Report**

**12 August, 2022**

Project: ARAPAHOE COUNTY  
Site: SEC 2-T4S-R65W  
Well: PROSPER FARMS 4-65 2-1-6 1AH  
Wellbore: OWB  
Design: PROPOSAL 1



WELL DETAILS: PROSPER FARMS 4-65 2-1-6 1AH

5631.11						
+N/-S	+E/-W	Northing	Easting	Latitude	Longitude	Slot
0.00	0.00	1691861.09	3242233.57	39.729810°N	104.638752°W	

SECTION DETAILS

Sec	MD	Inc	Azi	TVD	+N/-S	+E/-W	Dleg	TFace	VSec	Target
1	0.00	0.00	0.00	0.00	0.00	0.00	0.00	0.00	0.00	
2	100.00	0.00	0.00	100.00	0.00	0.00	0.00	0.00	0.00	
3	1312.71	24.25	344.45	1276.81	243.61	-67.78	2.00	344.45	-17.67	
4	7806.29	24.25	344.45	7197.22	2813.46	-782.83	0.00	0.00	-204.11	
5	8768.85	90.00	89.84	7780.00	3068.25	-214.02	10.00	104.08	404.18	LP-PROSPER FARMS 4-65 2-1-6 1
6	24225.31	90.00	89.84	7780.00	3112.50	15242.38	0.00	0.00	15556.92	PBHL-PROSPER FARMS 4-65 2-1-

ANNOTATIONS

MD	Inc	Azi	TVD	+N/-S	+E/-W	VSec	Departure	Annotation
100.00	0.00	0.00	100.00	0.00	0.00	0.00	0.00	Start Build 2.00
1312.71	24.25	344.45	1276.81	243.61	-67.78	-17.67	252.87	Start 6493.58 hold at 1312.71 MD
7806.29	24.25	344.45	7197.22	2813.46	-782.83	-204.11	2920.34	Start DLS 10.00 TFO 104.08
8768.85	90.00	89.84	7780.00	3068.25	-214.02	404.18	3604.64	Start 15456.46 hold at 8768.85 MD
24225.31	90.00	89.84	7780.00	3112.50	15242.38	15556.92	19061.09	TD at 24225.31

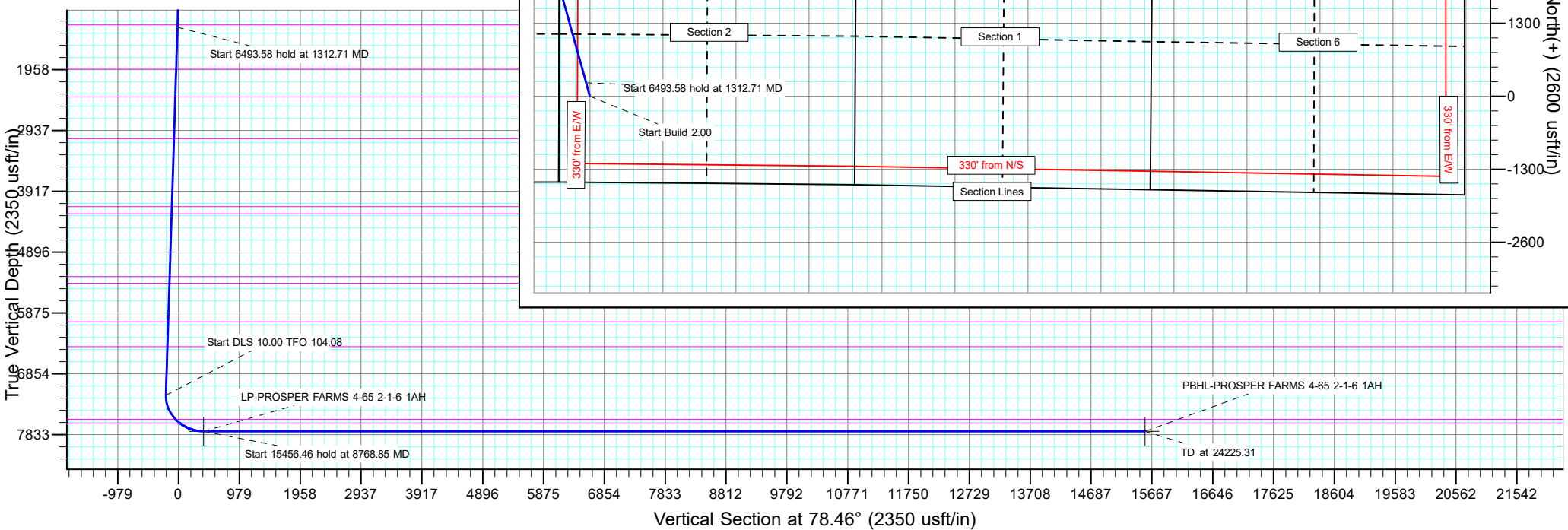
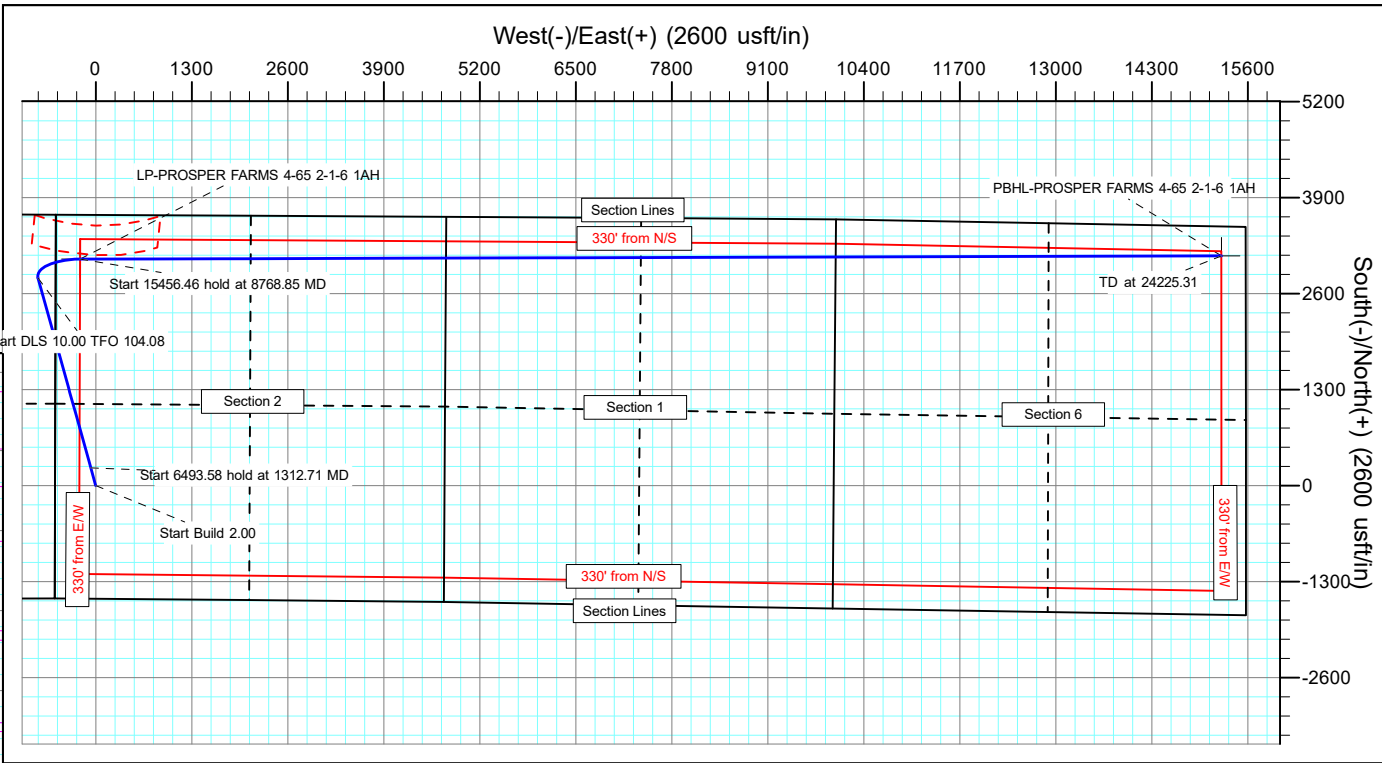
DESIGN TARGET DETAILS

Name	TVD	+N/-S	+E/-W	Northing	Easting	Latitude	Longitude	Shape
LP-PROSPER FARMS 4-65 2-1-6 1AH	7780.00	3068.25	-214.02	1694927.17	3241990.47	39.738233°N	104.639513°W	Point
- plan hits target center								
PBHL-PROSPER FARMS 4-65 2-1-6 1AH	7780.00	3112.50	15242.38	1695117.94	3257445.69	39.738342°N	104.584553°W	Point
- plan hits target center								

PROJECT DETAILS: ARAPAHOE COUNTY

Geodetic System: US State Plane 1983  
Datum: North American Datum 1983  
Ellipsoid: GRS 1980  
Zone: Colorado Central Zone  
System Datum: Mean Sea Level

SHL:  
1530' FSL, 553' FWL  
Sec 2-T4S-R65W  
  
LP:  
600' FNL, 330' FWL  
Sec 2-T4S-R65W  
  
BHL:  
400' FNL, 330' FEL  
Sec 6-T4S-R64W



## Planning Report

<b>Database:</b>	EDT_32Bit_ODBC	<b>Local Co-ordinate Reference:</b>	Well PROSPER FARMS 4-65 2-1-6 1AH
<b>Company:</b>	CRESTONE PEAK RESOURCES	<b>TVD Reference:</b>	KB 25' @ 5656.11usft
<b>Project:</b>	ARAPAHOE COUNTY	<b>MD Reference:</b>	KB 25' @ 5656.11usft
<b>Site:</b>	SEC 2-T4S-R65W	<b>North Reference:</b>	True
<b>Well:</b>	PROSPER FARMS 4-65 2-1-6 1AH	<b>Survey Calculation Method:</b>	Minimum Curvature
<b>Wellbore:</b>	OWB		
<b>Design:</b>	PROPOSAL 1		

<b>Project</b>	ARAPAHOE COUNTY		
<b>Map System:</b>	US State Plane 1983	<b>System Datum:</b>	Mean Sea Level
<b>Geo Datum:</b>	North American Datum 1983		
<b>Map Zone:</b>	Colorado Central Zone		Using geodetic scale factor

Site		SEC 2-T4S-R65W			
Site Position:		Northing:	1,695,525.07 usft	Latitude:	39.739883°N
From:	Lat/Long	Easting:	3,241,656.33 usft	Longitude:	104.640681°W
Position Uncertainty:	0.00 usft	Slot Radius:	13.200 in	Grid Convergence:	0.54 °

Well	PROSPER FARMS 4-65 2-1-6 1AH					
Well Position	+N/-S	-3,669.29 usft	Northing:	1,691,861.09 usft	Latitude:	39.729810°N
	+E/-W	542.56 usft	Easting:	3,242,233.57 usft	Longitude:	104.638752°W
Position Uncertainty		0.00 usft	Wellhead Elevation:		Ground Level:	5,631.11 usft

<b>Wellbore</b>	OWB				
<b>Magnetics</b>	<b>Model Name</b>	<b>Sample Date</b>	<b>Declination (°)</b>	<b>Dip Angle (°)</b>	<b>Field Strength (nT)</b>
	IGRF2020	6/8/2022	7.62	66.10	51,504.51995623

<b>Design</b>	PROPOSAL 1			
<b>Audit Notes:</b>				
<b>Version:</b>	<b>Phase:</b>	PROTOTYPE	<b>Tie On Depth:</b>	0.00
<b>Vertical Section:</b>	<b>Depth From (TVD) (usft)</b>	<b>+N/-S (usft)</b>	<b>+E/-W (usft)</b>	<b>Direction (°)</b>
	0.00	0.00	0.00	78.46

<b>Plan Survey Tool Program</b>	<b>Date</b>	8/12/2022		
<b>Depth From (usft)</b>	<b>Depth To (usft)</b>	<b>Survey (Wellbore)</b>	<b>Tool Name</b>	<b>Remarks</b>
1	0.00	24,225.31	PROPOSAL 1 (OWB)	MWD OWSG
				OWSG MWD - Standard

<b>Plan Sections</b>										
<b>Measured Depth (usft)</b>	<b>Inclination (°)</b>	<b>Azimuth (°)</b>	<b>Vertical Depth (usft)</b>	<b>+N/-S (usft)</b>	<b>+E/-W (usft)</b>	<b>Dogleg Rate (°/100ft)</b>	<b>Build Rate (°/100ft)</b>	<b>Turn Rate (°/100ft)</b>	<b>TFO (°)</b>	<b>Target</b>
0.00	0.00	0.00	0.00	0.00	0.00	0.00	0.00	0.00	0.00	
100.00	0.00	0.00	100.00	0.00	0.00	0.00	0.00	0.00	0.00	
1,312.71	24.25	344.45	1,276.81	243.61	-67.78	2.00	2.00	0.00	344.45	
7,806.29	24.25	344.45	7,197.22	2,813.46	-782.83	0.00	0.00	0.00	0.00	
8,768.85	90.00	89.84	7,780.00	3,068.25	-214.02	10.00	6.83	10.95	104.08	LP-PROSPER FARM
24,225.31	90.00	89.84	7,780.00	3,112.50	15,242.38	0.00	0.00	0.00	0.00	PBHL-PROSPER FAI

# Planning Report

<b>Database:</b>	EDT_32Bit_ODBC	<b>Local Co-ordinate Reference:</b>	Well PROSPER FARMS 4-65 2-1-6 1AH
<b>Company:</b>	CRESTONE PEAK RESOURCES	<b>TVD Reference:</b>	KB 25' @ 5656.11usft
<b>Project:</b>	ARAPAHOE COUNTY	<b>MD Reference:</b>	KB 25' @ 5656.11usft
<b>Site:</b>	SEC 2-T4S-R65W	<b>North Reference:</b>	True
<b>Well:</b>	PROSPER FARMS 4-65 2-1-6 1AH	<b>Survey Calculation Method:</b>	Minimum Curvature
<b>Wellbore:</b>	OWB		
<b>Design:</b>	PROPOSAL 1		

Planned Survey									
Measured Depth (usft)	Inclination (°)	Azimuth (°)	Vertical Depth (usft)	+N/-S (usft)	+E/-W (usft)	Vertical Section (usft)	Dogleg Rate (°/100ft)	Build Rate (°/100ft)	Turn Rate (°/100ft)
0.00	0.00	0.00	0.00	0.00	0.00	0.00	0.00	0.00	0.00
24.00	0.00	0.00	24.00	0.00	0.00	0.00	0.00	0.00	0.00
<b>Denver</b>									
100.00	0.00	0.00	100.00	0.00	0.00	0.00	0.00	0.00	0.00
<b>Start Build 2.00</b>									
200.00	2.00	344.45	199.98	1.68	-0.47	-0.12	2.00	2.00	0.00
300.00	4.00	344.45	299.84	6.72	-1.87	-0.49	2.00	2.00	0.00
400.00	6.00	344.45	399.45	15.12	-4.21	-1.10	2.00	2.00	0.00
500.00	8.00	344.45	498.70	26.86	-7.47	-1.95	2.00	2.00	0.00
600.00	10.00	344.45	597.47	41.93	-11.67	-3.04	2.00	2.00	0.00
667.71	11.35	344.45	664.00	54.02	-15.03	-3.92	2.00	2.00	0.00
<b>Arapahoe</b>									
700.00	12.00	344.45	695.62	60.31	-16.78	-4.38	2.00	2.00	0.00
800.00	14.00	344.45	793.06	81.98	-22.81	-5.95	2.00	2.00	0.00
900.00	16.00	344.45	889.64	106.92	-29.75	-7.76	2.00	2.00	0.00
1,000.00	18.00	344.45	985.27	135.08	-37.59	-9.80	2.00	2.00	0.00
1,100.00	20.00	344.45	1,079.82	166.45	-46.31	-12.08	2.00	2.00	0.00
1,200.00	22.00	344.45	1,173.17	200.97	-55.92	-14.58	2.00	2.00	0.00
1,271.37	23.43	344.45	1,239.00	227.52	-63.31	-16.51	2.00	2.00	0.00
<b>Laramie-Fox Hills Formation</b>									
1,300.00	24.00	344.45	1,265.21	238.61	-66.39	-17.31	2.00	2.00	0.00
1,312.71	24.25	344.45	1,276.81	243.61	-67.78	-17.67	2.00	2.00	0.00
<b>Start 6493.58 hold at 1312.71 MD</b>									
1,400.00	24.25	344.45	1,356.40	278.16	-77.40	-20.18	0.00	0.00	0.00
1,500.00	24.25	344.45	1,447.57	317.74	-88.41	-23.05	0.00	0.00	0.00
1,600.00	24.25	344.45	1,538.75	357.31	-99.42	-25.92	0.00	0.00	0.00
1,700.00	24.25	344.45	1,629.92	396.89	-110.43	-28.79	0.00	0.00	0.00
1,800.00	24.25	344.45	1,721.09	436.46	-121.44	-31.66	0.00	0.00	0.00
1,900.00	24.25	344.45	1,812.27	476.04	-132.46	-34.54	0.00	0.00	0.00
2,000.00	24.25	344.45	1,903.44	515.61	-143.47	-37.41	0.00	0.00	0.00
2,039.00	24.25	344.45	1,939.00	531.05	-147.76	-38.53	0.00	0.00	0.00
<b>Pierre Formation</b>									
2,100.00	24.25	344.45	1,994.61	555.19	-154.48	-40.28	0.00	0.00	0.00
2,200.00	24.25	344.45	2,085.78	594.76	-165.49	-43.15	0.00	0.00	0.00
2,300.00	24.25	344.45	2,176.96	634.34	-176.50	-46.02	0.00	0.00	0.00
2,400.00	24.25	344.45	2,268.13	673.91	-187.51	-48.89	0.00	0.00	0.00
2,500.00	24.25	344.45	2,359.30	713.49	-198.52	-51.76	0.00	0.00	0.00
2,543.54	24.25	344.45	2,399.00	730.72	-203.32	-53.01	0.00	0.00	0.00
<b>Upper Pierre aquifer</b>									
2,600.00	24.25	344.45	2,450.48	753.06	-209.54	-54.63	0.00	0.00	0.00
2,700.00	24.25	344.45	2,541.65	792.64	-220.55	-57.50	0.00	0.00	0.00
2,800.00	24.25	344.45	2,632.82	832.21	-231.56	-60.38	0.00	0.00	0.00
2,900.00	24.25	344.45	2,724.00	871.79	-242.57	-63.25	0.00	0.00	0.00
3,000.00	24.25	344.45	2,815.17	911.36	-253.58	-66.12	0.00	0.00	0.00
3,100.00	24.25	344.45	2,906.34	950.94	-264.59	-68.99	0.00	0.00	0.00
3,200.00	24.25	344.45	2,997.52	990.51	-275.61	-71.86	0.00	0.00	0.00
3,278.40	24.25	344.45	3,069.00	1,021.54	-284.24	-74.11	0.00	0.00	0.00
<b>Base of Upper Pierre aquifer</b>									
3,300.00	24.25	344.45	3,088.69	1,030.09	-286.62	-74.73	0.00	0.00	0.00
3,400.00	24.25	344.45	3,179.86	1,069.66	-297.63	-77.60	0.00	0.00	0.00
3,500.00	24.25	344.45	3,271.04	1,109.24	-308.64	-80.47	0.00	0.00	0.00
3,600.00	24.25	344.45	3,362.21	1,148.81	-319.65	-83.34	0.00	0.00	0.00
3,700.00	24.25	344.45	3,453.38	1,188.39	-330.66	-86.22	0.00	0.00	0.00

# Planning Report

<b>Database:</b>	EDT_32Bit_ODBC	<b>Local Co-ordinate Reference:</b>	Well PROSPER FARMS 4-65 2-1-6 1AH
<b>Company:</b>	CRESTONE PEAK RESOURCES	<b>TVD Reference:</b>	KB 25' @ 5656.11usft
<b>Project:</b>	ARAPAHOE COUNTY	<b>MD Reference:</b>	KB 25' @ 5656.11usft
<b>Site:</b>	SEC 2-T4S-R65W	<b>North Reference:</b>	True
<b>Well:</b>	PROSPER FARMS 4-65 2-1-6 1AH	<b>Survey Calculation Method:</b>	Minimum Curvature
<b>Wellbore:</b>	OWB		
<b>Design:</b>	PROPOSAL 1		

Planned Survey										
Measured Depth (usft)	Inclination (°)	Azimuth (°)	Vertical Depth (usft)	+N/-S (usft)	+E/-W (usft)	Vertical Section (usft)	Dogleg Rate (°/100ft)	Build Rate (°/100ft)	Turn Rate (°/100ft)	
3,800.00	24.25	344.45	3,544.56	1,227.96	-341.68	-89.09	0.00	0.00	0.00	
3,900.00	24.25	344.45	3,635.73	1,267.54	-352.69	-91.96	0.00	0.00	0.00	
4,000.00	24.25	344.45	3,726.90	1,307.11	-363.70	-94.83	0.00	0.00	0.00	
4,100.00	24.25	344.45	3,818.08	1,346.69	-374.71	-97.70	0.00	0.00	0.00	
4,200.00	24.25	344.45	3,909.25	1,386.26	-385.72	-100.57	0.00	0.00	0.00	
4,300.00	24.25	344.45	4,000.42	1,425.84	-396.73	-103.44	0.00	0.00	0.00	
4,400.00	24.25	344.45	4,091.60	1,465.41	-407.75	-106.31	0.00	0.00	0.00	
4,479.41	24.25	344.45	4,164.00	1,496.84	-416.49	-108.59	0.00	0.00	0.00	
Larimer ("Parkman") sandstone										
4,500.00	24.25	344.45	4,182.77	1,504.99	-418.76	-109.18	0.00	0.00	0.00	
4,600.00	24.25	344.45	4,273.94	1,544.56	-429.77	-112.06	0.00	0.00	0.00	
4,605.55	24.25	344.45	4,279.00	1,546.76	-430.38	-112.21	0.00	0.00	0.00	
Pierre Formation										
4,700.00	24.25	344.45	4,365.12	1,584.14	-440.78	-114.93	0.00	0.00	0.00	
4,800.00	24.25	344.45	4,456.29	1,623.71	-451.79	-117.80	0.00	0.00	0.00	
4,900.00	24.25	344.45	4,547.46	1,663.29	-462.80	-120.67	0.00	0.00	0.00	
5,000.00	24.25	344.45	4,638.63	1,702.87	-473.82	-123.54	0.00	0.00	0.00	
5,100.00	24.25	344.45	4,729.81	1,742.44	-484.83	-126.41	0.00	0.00	0.00	
5,200.00	24.25	344.45	4,820.98	1,782.02	-495.84	-129.28	0.00	0.00	0.00	
5,300.00	24.25	344.45	4,912.15	1,821.59	-506.85	-132.15	0.00	0.00	0.00	
5,400.00	24.25	344.45	5,003.33	1,861.17	-517.86	-135.02	0.00	0.00	0.00	
5,500.00	24.25	344.45	5,094.50	1,900.74	-528.87	-137.90	0.00	0.00	0.00	
5,600.00	24.25	344.45	5,185.67	1,940.32	-539.89	-140.77	0.00	0.00	0.00	
5,700.00	24.25	344.45	5,276.85	1,979.89	-550.90	-143.64	0.00	0.00	0.00	
5,713.33	24.25	344.45	5,289.00	1,985.17	-552.36	-144.02	0.00	0.00	0.00	
Terry ("Sussex") sandstone										
5,800.00	24.25	344.45	5,368.02	2,019.47	-561.91	-146.51	0.00	0.00	0.00	
5,833.98	24.25	344.45	5,399.00	2,032.91	-565.65	-147.48	0.00	0.00	0.00	
Pierre Formation										
5,900.00	24.25	344.45	5,459.19	2,059.04	-572.92	-149.38	0.00	0.00	0.00	
6,000.00	24.25	344.45	5,550.37	2,098.62	-583.93	-152.25	0.00	0.00	0.00	
6,100.00	24.25	344.45	5,641.54	2,138.19	-594.94	-155.12	0.00	0.00	0.00	
6,200.00	24.25	344.45	5,732.71	2,177.77	-605.95	-157.99	0.00	0.00	0.00	
6,300.00	24.25	344.45	5,823.89	2,217.34	-616.97	-160.86	0.00	0.00	0.00	
6,400.00	24.25	344.45	5,915.06	2,256.92	-627.98	-163.74	0.00	0.00	0.00	
6,500.00	24.25	344.45	6,006.23	2,296.49	-638.99	-166.61	0.00	0.00	0.00	
6,514.00	24.25	344.45	6,019.00	2,302.03	-640.53	-167.01	0.00	0.00	0.00	
Hygiene ("Shannon") sandstone										
6,600.00	24.25	344.45	6,097.41	2,336.07	-650.00	-169.48	0.00	0.00	0.00	
6,700.00	24.25	344.45	6,188.58	2,375.64	-661.01	-172.35	0.00	0.00	0.00	
6,800.00	24.25	344.45	6,279.75	2,415.22	-672.02	-175.22	0.00	0.00	0.00	
6,900.00	24.25	344.45	6,370.93	2,454.79	-683.04	-178.09	0.00	0.00	0.00	
6,952.73	24.25	344.45	6,419.00	2,475.66	-688.84	-179.60	0.00	0.00	0.00	
Pierre Formation										
7,000.00	24.25	344.45	6,462.10	2,494.37	-694.05	-180.96	0.00	0.00	0.00	
7,100.00	24.25	344.45	6,553.27	2,533.94	-705.06	-183.83	0.00	0.00	0.00	
7,200.00	24.25	344.45	6,644.45	2,573.52	-716.07	-186.70	0.00	0.00	0.00	
7,300.00	24.25	344.45	6,735.62	2,613.09	-727.08	-189.58	0.00	0.00	0.00	
7,400.00	24.25	344.45	6,826.79	2,652.67	-738.09	-192.45	0.00	0.00	0.00	
7,500.00	24.25	344.45	6,917.96	2,692.24	-749.11	-195.32	0.00	0.00	0.00	
7,600.00	24.25	344.45	7,009.14	2,731.82	-760.12	-198.19	0.00	0.00	0.00	
7,700.00	24.25	344.45	7,100.31	2,771.39	-771.13	-201.06	0.00	0.00	0.00	
7,806.29	24.25	344.45	7,197.22	2,813.46	-782.83	-204.11	0.00	0.00	0.00	

# Planning Report

<b>Database:</b>	EDT_32Bit_ODBC	<b>Local Co-ordinate Reference:</b>	Well PROSPER FARMS 4-65 2-1-6 1AH
<b>Company:</b>	CRESTONE PEAK RESOURCES	<b>TVD Reference:</b>	KB 25' @ 5656.11usft
<b>Project:</b>	ARAPAHOE COUNTY	<b>MD Reference:</b>	KB 25' @ 5656.11usft
<b>Site:</b>	SEC 2-T4S-R65W	<b>North Reference:</b>	True
<b>Well:</b>	PROSPER FARMS 4-65 2-1-6 1AH	<b>Survey Calculation Method:</b>	Minimum Curvature
<b>Wellbore:</b>	OWB		
<b>Design:</b>	PROPOSAL 1		

Planned Survey									
Measured Depth (usft)	Inclination (°)	Azimuth (°)	Vertical Depth (usft)	+N/-S (usft)	+E/-W (usft)	Vertical Section (usft)	Dogleg Rate (°/100ft)	Build Rate (°/100ft)	Turn Rate (°/100ft)
<b>Start DLS 10.00 TFO 104.08</b>									
7,850.00	23.55	355.11	7,237.20	2,830.82	-785.99	-203.73	10.00	-1.61	24.39
7,900.00	23.67	7.61	7,283.04	2,850.73	-785.51	-199.27	10.00	0.25	25.00
7,950.00	24.77	19.53	7,328.67	2,870.57	-780.67	-190.57	10.00	2.19	23.83
8,000.00	26.71	30.15	7,373.73	2,890.17	-771.52	-177.68	10.00	3.89	21.25
8,050.00	29.34	39.22	7,417.88	2,909.39	-758.12	-160.71	10.00	5.25	18.14
8,100.00	32.48	46.81	7,460.79	2,928.08	-740.58	-139.78	10.00	6.29	15.17
8,150.00	36.00	53.12	7,502.13	2,946.10	-719.02	-115.05	10.00	7.05	12.63
8,200.00	39.81	58.42	7,541.58	2,963.31	-693.61	-86.71	10.00	7.60	10.59
8,250.00	43.81	62.91	7,578.85	2,979.58	-664.55	-54.98	10.00	8.01	8.99
8,264.20	44.98	64.07	7,589.00	2,984.02	-655.66	-45.39	10.00	8.22	8.14
<b>Sharon Springs Member</b>									
8,300.00	47.97	66.78	7,613.66	2,994.79	-632.06	-20.10	10.00	8.35	7.59
8,350.00	52.24	70.17	7,645.72	3,008.83	-596.38	17.66	10.00	8.54	6.78
8,372.16	54.16	71.55	7,659.00	3,014.64	-579.61	35.26	10.00	8.67	6.22
<b>Niobrara Formation</b>									
8,400.00	56.60	73.19	7,674.81	3,021.57	-557.78	58.03	10.00	8.75	5.89
8,450.00	61.02	75.92	7,700.70	3,032.94	-516.56	100.69	10.00	8.85	5.45
8,500.00	65.50	78.42	7,723.20	3,042.84	-473.04	145.31	10.00	8.95	5.00
8,550.00	70.01	80.74	7,742.13	3,051.19	-427.54	191.57	10.00	9.03	4.65
8,600.00	74.55	82.94	7,757.34	3,057.93	-380.40	239.09	10.00	9.08	4.39
8,650.00	79.11	85.04	7,768.73	3,063.02	-332.00	287.54	10.00	9.12	4.21
8,700.00	83.69	87.08	7,776.21	3,066.41	-282.70	336.52	10.00	9.15	4.08
8,750.00	88.27	89.08	7,779.72	3,068.08	-232.86	385.68	10.00	9.17	4.01
8,768.85	90.00	89.84	7,780.00	3,068.25	-214.02	404.18	10.00	9.17	3.99
<b>Start 15456.46 hold at 8768.85 MD</b>									
8,800.00	90.00	89.84	7,780.00	3,068.34	-182.87	434.72	0.00	0.00	0.00
8,900.00	90.00	89.84	7,780.00	3,068.63	-82.87	532.75	0.00	0.00	0.00
9,000.00	90.00	89.84	7,780.00	3,068.91	17.13	630.79	0.00	0.00	0.00
9,100.00	90.00	89.84	7,780.00	3,069.20	117.13	728.82	0.00	0.00	0.00
9,200.00	90.00	89.84	7,780.00	3,069.49	217.13	826.86	0.00	0.00	0.00
9,300.00	90.00	89.84	7,780.00	3,069.77	317.13	924.89	0.00	0.00	0.00
9,400.00	90.00	89.84	7,780.00	3,070.06	417.13	1,022.93	0.00	0.00	0.00
9,500.00	90.00	89.84	7,780.00	3,070.35	517.13	1,120.96	0.00	0.00	0.00
9,600.00	90.00	89.84	7,780.00	3,070.63	617.13	1,219.00	0.00	0.00	0.00
9,700.00	90.00	89.84	7,780.00	3,070.92	717.13	1,317.03	0.00	0.00	0.00
9,800.00	90.00	89.84	7,780.00	3,071.21	817.13	1,415.07	0.00	0.00	0.00
9,900.00	90.00	89.84	7,780.00	3,071.49	917.13	1,513.10	0.00	0.00	0.00
10,000.00	90.00	89.84	7,780.00	3,071.78	1,017.13	1,611.14	0.00	0.00	0.00
10,100.00	90.00	89.84	7,780.00	3,072.06	1,117.13	1,709.17	0.00	0.00	0.00
10,200.00	90.00	89.84	7,780.00	3,072.35	1,217.13	1,807.21	0.00	0.00	0.00
10,300.00	90.00	89.84	7,780.00	3,072.64	1,317.13	1,905.24	0.00	0.00	0.00
10,400.00	90.00	89.84	7,780.00	3,072.92	1,417.13	2,003.28	0.00	0.00	0.00
10,500.00	90.00	89.84	7,780.00	3,073.21	1,517.13	2,101.31	0.00	0.00	0.00
10,600.00	90.00	89.84	7,780.00	3,073.50	1,617.13	2,199.35	0.00	0.00	0.00
10,700.00	90.00	89.84	7,780.00	3,073.78	1,717.13	2,297.38	0.00	0.00	0.00
10,800.00	90.00	89.84	7,780.00	3,074.07	1,817.13	2,395.42	0.00	0.00	0.00
10,900.00	90.00	89.84	7,780.00	3,074.35	1,917.12	2,493.45	0.00	0.00	0.00
11,000.00	90.00	89.84	7,780.00	3,074.64	2,017.12	2,591.49	0.00	0.00	0.00
11,100.00	90.00	89.84	7,780.00	3,074.93	2,117.12	2,689.52	0.00	0.00	0.00
11,200.00	90.00	89.84	7,780.00	3,075.21	2,217.12	2,787.56	0.00	0.00	0.00
11,300.00	90.00	89.84	7,780.00	3,075.50	2,317.12	2,885.59	0.00	0.00	0.00
11,400.00	90.00	89.84	7,780.00	3,075.79	2,417.12	2,983.63	0.00	0.00	0.00

# Planning Report

<b>Database:</b>	EDT_32Bit_ODBC	<b>Local Co-ordinate Reference:</b>	Well PROSPER FARMS 4-65 2-1-6 1AH
<b>Company:</b>	CRESTONE PEAK RESOURCES	<b>TVD Reference:</b>	KB 25' @ 5656.11usft
<b>Project:</b>	ARAPAHOE COUNTY	<b>MD Reference:</b>	KB 25' @ 5656.11usft
<b>Site:</b>	SEC 2-T4S-R65W	<b>North Reference:</b>	True
<b>Well:</b>	PROSPER FARMS 4-65 2-1-6 1AH	<b>Survey Calculation Method:</b>	Minimum Curvature
<b>Wellbore:</b>	OWB		
<b>Design:</b>	PROPOSAL 1		

Planned Survey										
Measured Depth (usft)	Inclination (°)	Azimuth (°)	Vertical Depth (usft)	+N/-S (usft)	+E/-W (usft)	Vertical Section (usft)	Dogleg Rate (°/100ft)	Build Rate (°/100ft)	Turn Rate (°/100ft)	
11,500.00	90.00	89.84	7,780.00	3,076.07	2,517.12	3,081.66	0.00	0.00	0.00	
11,600.00	90.00	89.84	7,780.00	3,076.36	2,617.12	3,179.70	0.00	0.00	0.00	
11,700.00	90.00	89.84	7,780.00	3,076.64	2,717.12	3,277.73	0.00	0.00	0.00	
11,800.00	90.00	89.84	7,780.00	3,076.93	2,817.12	3,375.77	0.00	0.00	0.00	
11,900.00	90.00	89.84	7,780.00	3,077.22	2,917.12	3,473.80	0.00	0.00	0.00	
12,000.00	90.00	89.84	7,780.00	3,077.50	3,017.12	3,571.84	0.00	0.00	0.00	
12,100.00	90.00	89.84	7,780.00	3,077.79	3,117.12	3,669.87	0.00	0.00	0.00	
12,200.00	90.00	89.84	7,780.00	3,078.08	3,217.12	3,767.91	0.00	0.00	0.00	
12,300.00	90.00	89.84	7,780.00	3,078.36	3,317.12	3,865.94	0.00	0.00	0.00	
12,400.00	90.00	89.84	7,780.00	3,078.65	3,417.12	3,963.98	0.00	0.00	0.00	
12,500.00	90.00	89.84	7,780.00	3,078.94	3,517.12	4,062.01	0.00	0.00	0.00	
12,600.00	90.00	89.84	7,780.00	3,079.22	3,617.12	4,160.05	0.00	0.00	0.00	
12,700.00	90.00	89.84	7,780.00	3,079.51	3,717.12	4,258.08	0.00	0.00	0.00	
12,800.00	90.00	89.84	7,780.00	3,079.79	3,817.12	4,356.12	0.00	0.00	0.00	
12,900.00	90.00	89.84	7,780.00	3,080.08	3,917.12	4,454.15	0.00	0.00	0.00	
13,000.00	90.00	89.84	7,780.00	3,080.37	4,017.12	4,552.19	0.00	0.00	0.00	
13,100.00	90.00	89.84	7,780.00	3,080.65	4,117.12	4,650.22	0.00	0.00	0.00	
13,200.00	90.00	89.84	7,780.00	3,080.94	4,217.12	4,748.26	0.00	0.00	0.00	
13,300.00	90.00	89.84	7,780.00	3,081.23	4,317.11	4,846.29	0.00	0.00	0.00	
13,400.00	90.00	89.84	7,780.00	3,081.51	4,417.11	4,944.33	0.00	0.00	0.00	
13,500.00	90.00	89.84	7,780.00	3,081.80	4,517.11	5,042.36	0.00	0.00	0.00	
13,600.00	90.00	89.84	7,780.00	3,082.08	4,617.11	5,140.40	0.00	0.00	0.00	
13,700.00	90.00	89.84	7,780.00	3,082.37	4,717.11	5,238.43	0.00	0.00	0.00	
13,800.00	90.00	89.84	7,780.00	3,082.66	4,817.11	5,336.47	0.00	0.00	0.00	
13,900.00	90.00	89.84	7,780.00	3,082.94	4,917.11	5,434.50	0.00	0.00	0.00	
14,000.00	90.00	89.84	7,780.00	3,083.23	5,017.11	5,532.54	0.00	0.00	0.00	
14,100.00	90.00	89.84	7,780.00	3,083.52	5,117.11	5,630.57	0.00	0.00	0.00	
14,200.00	90.00	89.84	7,780.00	3,083.80	5,217.11	5,728.61	0.00	0.00	0.00	
14,300.00	90.00	89.84	7,780.00	3,084.09	5,317.11	5,826.64	0.00	0.00	0.00	
14,400.00	90.00	89.84	7,780.00	3,084.37	5,417.11	5,924.68	0.00	0.00	0.00	
14,500.00	90.00	89.84	7,780.00	3,084.66	5,517.11	6,022.71	0.00	0.00	0.00	
14,600.00	90.00	89.84	7,780.00	3,084.95	5,617.11	6,120.75	0.00	0.00	0.00	
14,700.00	90.00	89.84	7,780.00	3,085.23	5,717.11	6,218.78	0.00	0.00	0.00	
14,800.00	90.00	89.84	7,780.00	3,085.52	5,817.11	6,316.82	0.00	0.00	0.00	
14,900.00	90.00	89.84	7,780.00	3,085.81	5,917.11	6,414.85	0.00	0.00	0.00	
15,000.00	90.00	89.84	7,780.00	3,086.09	6,017.11	6,512.89	0.00	0.00	0.00	
15,100.00	90.00	89.84	7,780.00	3,086.38	6,117.11	6,610.92	0.00	0.00	0.00	
15,200.00	90.00	89.84	7,780.00	3,086.67	6,217.11	6,708.96	0.00	0.00	0.00	
15,300.00	90.00	89.84	7,780.00	3,086.95	6,317.11	6,806.99	0.00	0.00	0.00	
15,400.00	90.00	89.84	7,780.00	3,087.24	6,417.11	6,905.03	0.00	0.00	0.00	
15,500.00	90.00	89.84	7,780.00	3,087.52	6,517.11	7,003.06	0.00	0.00	0.00	
15,600.00	90.00	89.84	7,780.00	3,087.81	6,617.11	7,101.10	0.00	0.00	0.00	
15,700.00	90.00	89.84	7,780.00	3,088.10	6,717.11	7,199.13	0.00	0.00	0.00	
15,800.00	90.00	89.84	7,780.00	3,088.38	6,817.10	7,297.17	0.00	0.00	0.00	
15,900.00	90.00	89.84	7,780.00	3,088.67	6,917.10	7,395.20	0.00	0.00	0.00	
16,000.00	90.00	89.84	7,780.00	3,088.96	7,017.10	7,493.24	0.00	0.00	0.00	
16,100.00	90.00	89.84	7,780.00	3,089.24	7,117.10	7,591.27	0.00	0.00	0.00	
16,200.00	90.00	89.84	7,780.00	3,089.53	7,217.10	7,689.31	0.00	0.00	0.00	
16,300.00	90.00	89.84	7,780.00	3,089.81	7,317.10	7,787.34	0.00	0.00	0.00	
16,400.00	90.00	89.84	7,780.00	3,090.10	7,417.10	7,885.38	0.00	0.00	0.00	
16,500.00	90.00	89.84	7,780.00	3,090.39	7,517.10	7,983.41	0.00	0.00	0.00	
16,600.00	90.00	89.84	7,780.00	3,090.67	7,617.10	8,081.45	0.00	0.00	0.00	
16,700.00	90.00	89.84	7,780.00	3,090.96	7,717.10	8,179.48	0.00	0.00	0.00	
16,800.00	90.00	89.84	7,780.00	3,091.25	7,817.10	8,277.52	0.00	0.00	0.00	

# Planning Report

<b>Database:</b>	EDT_32Bit_ODBC	<b>Local Co-ordinate Reference:</b>	Well PROSPER FARMS 4-65 2-1-6 1AH
<b>Company:</b>	CRESTONE PEAK RESOURCES	<b>TVD Reference:</b>	KB 25' @ 5656.11usft
<b>Project:</b>	ARAPAHOE COUNTY	<b>MD Reference:</b>	KB 25' @ 5656.11usft
<b>Site:</b>	SEC 2-T4S-R65W	<b>North Reference:</b>	True
<b>Well:</b>	PROSPER FARMS 4-65 2-1-6 1AH	<b>Survey Calculation Method:</b>	Minimum Curvature
<b>Wellbore:</b>	OWB		
<b>Design:</b>	PROPOSAL 1		

Planned Survey									
Measured Depth (usft)	Inclination (°)	Azimuth (°)	Vertical Depth (usft)	+N/-S (usft)	+E/-W (usft)	Vertical Section (usft)	Dogleg Rate (°/100ft)	Build Rate (°/100ft)	Turn Rate (°/100ft)
16,900.00	90.00	89.84	7,780.00	3,091.53	7,917.10	8,375.55	0.00	0.00	0.00
17,000.00	90.00	89.84	7,780.00	3,091.82	8,017.10	8,473.59	0.00	0.00	0.00
17,100.00	90.00	89.84	7,780.00	3,092.10	8,117.10	8,571.62	0.00	0.00	0.00
17,200.00	90.00	89.84	7,780.00	3,092.39	8,217.10	8,669.66	0.00	0.00	0.00
17,300.00	90.00	89.84	7,780.00	3,092.68	8,317.10	8,767.69	0.00	0.00	0.00
17,400.00	90.00	89.84	7,780.00	3,092.96	8,417.10	8,865.73	0.00	0.00	0.00
17,500.00	90.00	89.84	7,780.00	3,093.25	8,517.10	8,963.76	0.00	0.00	0.00
17,600.00	90.00	89.84	7,780.00	3,093.54	8,617.10	9,061.80	0.00	0.00	0.00
17,700.00	90.00	89.84	7,780.00	3,093.82	8,717.10	9,159.83	0.00	0.00	0.00
17,800.00	90.00	89.84	7,780.00	3,094.11	8,817.10	9,257.87	0.00	0.00	0.00
17,900.00	90.00	89.84	7,780.00	3,094.40	8,917.10	9,355.90	0.00	0.00	0.00
18,000.00	90.00	89.84	7,780.00	3,094.68	9,017.10	9,453.94	0.00	0.00	0.00
18,100.00	90.00	89.84	7,780.00	3,094.97	9,117.10	9,551.97	0.00	0.00	0.00
18,200.00	90.00	89.84	7,780.00	3,095.25	9,217.09	9,650.01	0.00	0.00	0.00
18,300.00	90.00	89.84	7,780.00	3,095.54	9,317.09	9,748.04	0.00	0.00	0.00
18,400.00	90.00	89.84	7,780.00	3,095.83	9,417.09	9,846.08	0.00	0.00	0.00
18,500.00	90.00	89.84	7,780.00	3,096.11	9,517.09	9,944.11	0.00	0.00	0.00
18,600.00	90.00	89.84	7,780.00	3,096.40	9,617.09	10,042.15	0.00	0.00	0.00
18,700.00	90.00	89.84	7,780.00	3,096.69	9,717.09	10,140.18	0.00	0.00	0.00
18,800.00	90.00	89.84	7,780.00	3,096.97	9,817.09	10,238.22	0.00	0.00	0.00
18,900.00	90.00	89.84	7,780.00	3,097.26	9,917.09	10,336.25	0.00	0.00	0.00
19,000.00	90.00	89.84	7,780.00	3,097.54	10,017.09	10,434.29	0.00	0.00	0.00
19,100.00	90.00	89.84	7,780.00	3,097.83	10,117.09	10,532.32	0.00	0.00	0.00
19,200.00	90.00	89.84	7,780.00	3,098.12	10,217.09	10,630.36	0.00	0.00	0.00
19,300.00	90.00	89.84	7,780.00	3,098.40	10,317.09	10,728.39	0.00	0.00	0.00
19,400.00	90.00	89.84	7,780.00	3,098.69	10,417.09	10,826.43	0.00	0.00	0.00
19,500.00	90.00	89.84	7,780.00	3,098.98	10,517.09	10,924.46	0.00	0.00	0.00
19,600.00	90.00	89.84	7,780.00	3,099.26	10,617.09	11,022.50	0.00	0.00	0.00
19,700.00	90.00	89.84	7,780.00	3,099.55	10,717.09	11,120.53	0.00	0.00	0.00
19,800.00	90.00	89.84	7,780.00	3,099.83	10,817.09	11,218.57	0.00	0.00	0.00
19,900.00	90.00	89.84	7,780.00	3,100.12	10,917.09	11,316.60	0.00	0.00	0.00
20,000.00	90.00	89.84	7,780.00	3,100.41	11,017.09	11,414.64	0.00	0.00	0.00
20,100.00	90.00	89.84	7,780.00	3,100.69	11,117.09	11,512.67	0.00	0.00	0.00
20,200.00	90.00	89.84	7,780.00	3,100.98	11,217.09	11,610.71	0.00	0.00	0.00
20,300.00	90.00	89.84	7,780.00	3,101.27	11,317.09	11,708.74	0.00	0.00	0.00
20,400.00	90.00	89.84	7,780.00	3,101.55	11,417.09	11,806.78	0.00	0.00	0.00
20,500.00	90.00	89.84	7,780.00	3,101.84	11,517.09	11,904.81	0.00	0.00	0.00
20,600.00	90.00	89.84	7,780.00	3,102.13	11,617.09	12,002.85	0.00	0.00	0.00
20,700.00	90.00	89.84	7,780.00	3,102.41	11,717.08	12,100.88	0.00	0.00	0.00
20,800.00	90.00	89.84	7,780.00	3,102.70	11,817.08	12,198.92	0.00	0.00	0.00
20,900.00	90.00	89.84	7,780.00	3,102.98	11,917.08	12,296.95	0.00	0.00	0.00
21,000.00	90.00	89.84	7,780.00	3,103.27	12,017.08	12,394.99	0.00	0.00	0.00
21,100.00	90.00	89.84	7,780.00	3,103.56	12,117.08	12,493.02	0.00	0.00	0.00
21,200.00	90.00	89.84	7,780.00	3,103.84	12,217.08	12,591.06	0.00	0.00	0.00
21,300.00	90.00	89.84	7,780.00	3,104.13	12,317.08	12,689.09	0.00	0.00	0.00
21,400.00	90.00	89.84	7,780.00	3,104.42	12,417.08	12,787.13	0.00	0.00	0.00
21,500.00	90.00	89.84	7,780.00	3,104.70	12,517.08	12,885.16	0.00	0.00	0.00
21,600.00	90.00	89.84	7,780.00	3,104.99	12,617.08	12,983.20	0.00	0.00	0.00
21,700.00	90.00	89.84	7,780.00	3,105.27	12,717.08	13,081.23	0.00	0.00	0.00
21,800.00	90.00	89.84	7,780.00	3,105.56	12,817.08	13,179.27	0.00	0.00	0.00
21,900.00	90.00	89.84	7,780.00	3,105.85	12,917.08	13,277.30	0.00	0.00	0.00
22,000.00	90.00	89.84	7,780.00	3,106.13	13,017.08	13,375.34	0.00	0.00	0.00
22,100.00	90.00	89.84	7,780.00	3,106.42	13,117.08	13,473.37	0.00	0.00	0.00
22,200.00	90.00	89.84	7,780.00	3,106.71	13,217.08	13,571.41	0.00	0.00	0.00



## Planning Report

<b>Database:</b>	EDT_32Bit_ODBC	<b>Local Co-ordinate Reference:</b>	Well PROSPER FARMS 4-65 2-1-6 1AH
<b>Company:</b>	CRESTONE PEAK RESOURCES	<b>TVD Reference:</b>	KB 25' @ 5656.11usft
<b>Project:</b>	ARAPAHOE COUNTY	<b>MD Reference:</b>	KB 25' @ 5656.11usft
<b>Site:</b>	SEC 2-T4S-R65W	<b>North Reference:</b>	True
<b>Well:</b>	PROSPER FARMS 4-65 2-1-6 1AH	<b>Survey Calculation Method:</b>	Minimum Curvature
<b>Wellbore:</b>	OWB		
<b>Design:</b>	PROPOSAL 1		

Planned Survey										
Measured Depth (usft)	Inclination (°)	Azimuth (°)	Vertical Depth (usft)	+N/-S (usft)	+E/-W (usft)	Vertical Section (usft)	Dogleg Rate (°/100ft)	Build Rate (°/100ft)	Turn Rate (°/100ft)	
22,300.00	90.00	89.84	7,780.00	3,106.99	13,317.08	13,669.44	0.00	0.00	0.00	
22,400.00	90.00	89.84	7,780.00	3,107.28	13,417.08	13,767.48	0.00	0.00	0.00	
22,500.00	90.00	89.84	7,780.00	3,107.56	13,517.08	13,865.51	0.00	0.00	0.00	
22,600.00	90.00	89.84	7,780.00	3,107.85	13,617.08	13,963.55	0.00	0.00	0.00	
22,700.00	90.00	89.84	7,780.00	3,108.14	13,717.08	14,061.58	0.00	0.00	0.00	
22,800.00	90.00	89.84	7,780.00	3,108.42	13,817.08	14,159.62	0.00	0.00	0.00	
22,900.00	90.00	89.84	7,780.00	3,108.71	13,917.08	14,257.65	0.00	0.00	0.00	
23,000.00	90.00	89.84	7,780.00	3,109.00	14,017.08	14,355.69	0.00	0.00	0.00	
23,100.00	90.00	89.84	7,780.00	3,109.28	14,117.07	14,453.72	0.00	0.00	0.00	
23,200.00	90.00	89.84	7,780.00	3,109.57	14,217.07	14,551.76	0.00	0.00	0.00	
23,300.00	90.00	89.84	7,780.00	3,109.86	14,317.07	14,649.79	0.00	0.00	0.00	
23,400.00	90.00	89.84	7,780.00	3,110.14	14,417.07	14,747.83	0.00	0.00	0.00	
23,500.00	90.00	89.84	7,780.00	3,110.43	14,517.07	14,845.86	0.00	0.00	0.00	
23,600.00	90.00	89.84	7,780.00	3,110.71	14,617.07	14,943.90	0.00	0.00	0.00	
23,700.00	90.00	89.84	7,780.00	3,111.00	14,717.07	15,041.93	0.00	0.00	0.00	
23,800.00	90.00	89.84	7,780.00	3,111.29	14,817.07	15,139.97	0.00	0.00	0.00	
23,900.00	90.00	89.84	7,780.00	3,111.57	14,917.07	15,238.00	0.00	0.00	0.00	
24,000.00	90.00	89.84	7,780.00	3,111.86	15,017.07	15,336.04	0.00	0.00	0.00	
24,100.00	90.00	89.84	7,780.00	3,112.15	15,117.07	15,434.07	0.00	0.00	0.00	
24,200.00	90.00	89.84	7,780.00	3,112.43	15,217.07	15,532.11	0.00	0.00	0.00	
24,225.31	90.00	89.84	7,780.00	3,112.50	15,242.38	15,556.92	0.00	0.00	0.00	
TD at 24225.31										

Design Targets										
Target Name - hit/miss target - Shape	Dip Angle (°)	Dip Dir. (°)	TVD (usft)	+N/-S (usft)	+E/-W (usft)	Northing (usft)	Easting (usft)	Latitude	Longitude	
PBHL-PROSPER FARM - plan hits target center - Point	0.00	0.00	7,780.00	3,112.50	15,242.38	1,695,117.94	3,257,445.69	39.738342°N	104.584553°W	
LP-PROSPER FARMS 4 - plan hits target center - Point	0.00	0.00	7,780.00	3,068.25	-214.02	1,694,927.16	3,241,990.47	39.738233°N	104.639513°W	

## Planning Report

<b>Database:</b>	EDT_32Bit_ODBC	<b>Local Co-ordinate Reference:</b>	Well PROSPER FARMS 4-65 2-1-6 1AH
<b>Company:</b>	CRESTONE PEAK RESOURCES	<b>TVD Reference:</b>	KB 25' @ 5656.11usft
<b>Project:</b>	ARAPAHOE COUNTY	<b>MD Reference:</b>	KB 25' @ 5656.11usft
<b>Site:</b>	SEC 2-T4S-R65W	<b>North Reference:</b>	True
<b>Well:</b>	PROSPER FARMS 4-65 2-1-6 1AH	<b>Survey Calculation Method:</b>	Minimum Curvature
<b>Wellbore:</b>	OWB		
<b>Design:</b>	PROPOSAL 1		

Formations						
Measured Depth (usft)	Vertical Depth (usft)	Name	Lithology	Dip (°)	Dip Direction (°)	
24.00	24.00	Denver				
667.71	664.00	Arapahoe				
1,271.37	1,239.00	Laramie-Fox Hills Formation				
2,039.00	1,939.00	Pierre Formation				
2,543.54	2,399.00	Upper Pierre aquifer				
3,278.40	3,069.00	Base of Upper Pierre aquifer				
4,479.41	4,164.00	Larimer ("Parkman") sandstone				
4,605.55	4,279.00	Pierre Formation				
5,713.33	5,289.00	Terry ("Sussex") sandstone				
5,833.98	5,399.00	Pierre Formation				
6,514.00	6,019.00	Hygiene ("Shannon") sandstone				
6,952.73	6,419.00	Pierre Formation				
8,264.20	7,589.00	Sharon Springs Member				
8,372.16	7,659.00	Niobrara Formation				

Plan Annotations				
Measured Depth (usft)	Vertical Depth (usft)	Local Coordinates		Comment
		+N/-S (usft)	+E/-W (usft)	
100.00	100.00	0.00	0.00	Start Build 2.00
1,312.71	1,276.81	243.61	-67.78	Start 6493.58 hold at 1312.71 MD
7,806.29	7,197.22	2,813.46	-782.83	Start DLS 10.00 TFO 104.08
8,768.85	7,780.00	3,068.25	-214.02	Start 15456.46 hold at 8768.85 MD
24,225.31	7,780.00	3,112.50	15,242.38	TD at 24225.31