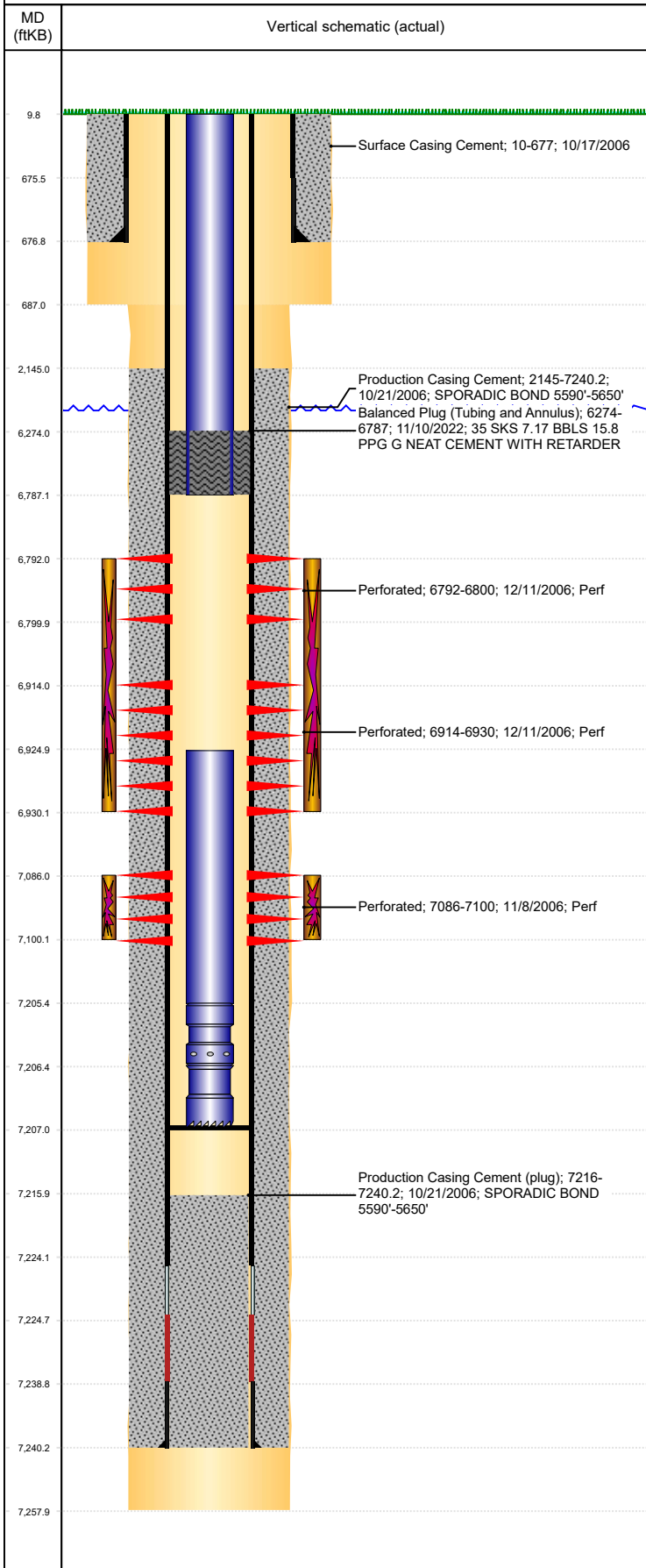




P&A Wellbore For State

Well Name: HOWE USX AB33-04

Land, Original Hole, 11/22/2022 12:44:33 PM



Well Header

Surface UWI 0512327390	Business Unit Rockies	Gov Auth Dist	Prod Tree Loc Land
Orig. KB to Gnd (ft) 10.00	Original Spud Date 10/16/2006	Abandon Date	Well Sub-Status TA
High... N			

Comment

PUSH CIFTBP TO 7207'

Surface Location (Congressional)

Qtr 3 NW	Qtr 4 NW	Section 33	Twnshp 7	Twnsh... N	Range 64	Rng E... W	Latitude (°) 40.53468307	Longitude (°) -104.561882699
5								

Wellbore Sections

Section Des	Hole Size (in)	Act Top (ftKB)	Act Btm (ftKB)
SURFACE	12 1/4	10.0	687.0
PRODUCTION	7 7/8	687.0	7,258.0

Casing Strings

Csg Des	Run Date	OD (in)	Wt/Len (lb/ft)	Grade	Top Depth (MD) (ftKB)	Set Depth (MD) (ftKB)
Surface	10/17/2006	8 5/8	24.00	J-55	10	677
Production Casing	10/20/2006	4 1/2	11.60	M-80	10	7240.2

Cement

Des	Start Date	Top (ftKB)	Btm (ftKB)
Surface Casing Cement	10/17/2006	10.0	677.0
Production Casing Cement	10/21/2006	2,145.0	7,240.2
Balanced Plug (Tubing and Annulus)	11/10/2022	6,274.0	6,787.0

Zone Statuses

Zone Name	Status Date	Status	Fluid Type	Job	Prod Method
NIOBRARA	6/4/2010	PR	Water	Abandon Well - Temporary, 11/8/2022 10:00	Flowing
NIOBRARA	11/10/2022	Closed			
CODELL	5/9/2017	SI		Abandon Well - Temporary, 11/8/2022 10:00	
CODELL	11/10/2022	Closed			

Perforation Data

Linked Zone	Explosive Type	Entered Shot Total	Top (ftKB)	Btm (ftKB)	Date
NIOBRARA, Original Hole		48	6,792.0	6,800.0	12/11/2006
NIOBRARA, Original Hole		96	6,914.0	6,930.0	12/11/2006
CODELL, Original Hole		56	7,086.0	7,100.0	11/8/2006

Stimulation Intervals

Zone	Start Date	Top (ftKB)	Btm (ftKB)
NIOBRARA, Original Hole	12/11/2006	6,792.0	6,930.0
CODELL, Original Hole	12/11/2006	7,086.0	7,100.0

Other In Hole

Run Date	Des	Make	OD (in)	Top (ftKB)	Btm (ftKB)

Logs

Date	Type	Depth Top (MD) (ftKB)	Btm (ftKB)
10/20/2006	COMPENSATED DENSITY	2,950	7,238.0
10/20/2006	INDUCTION	677	7,258.0
11/7/2006	CBL/CCL/GR	2,005	7,214.0

Plug Back Total Depths

Date	Type	Com	PBTD (ftKB)
11/7/2006	FILL	DEPTH LOGGER ON CBL	7,216
1/18/2007	PLUG REMNANTS	DRILL CIFTF AND PUSH TO 7207'	7,207