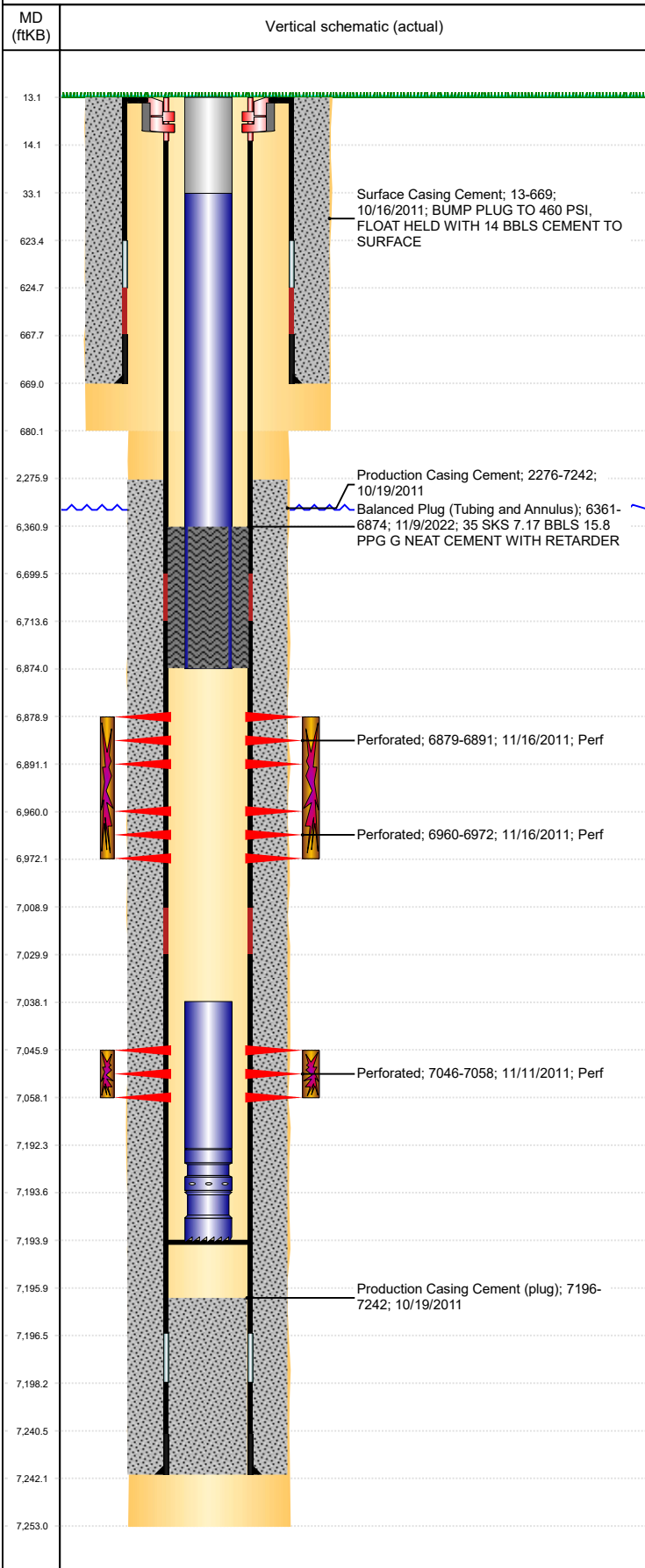




P&A Wellbore For State

Well Name: VEGA USX A03-05

Land, Original Hole, 11/18/2022 11:29:40 AM



Well Header					
Surface UWI	Business Unit	Gov Auth Dist	Prod Tree Loc		
0512333459	Rockies		Land		
Orig. KB to Gnd (ft)	Original Spud Date	Abandon Date	Well Sub-Status	High...	
13.00	10/15/2011		TA	N	

Surface Location (Congressional)								
Qtr 3	Qtr 4	Section	Twonshp	Twonsh...	Range	Rng E...	Latitude (°)	Longitude (°)
SW	NW	3	6	N	64	W	40.51698713	-104.54266351
							2	

Wellbore Sections			
Section Des	Hole Size (in)	Act Top (ftKB)	Act Btm (ftKB)
SURFACE	12 1/4	13.0	680.0
PRODUCTION	7 7/8	680.0	7,253.0

Casing Strings						
Csg Des	Run Date	OD (in)	Wt/Len (lb/ft)	Grade	Top Depth (MD) (ftKB)	Set Depth (MD) (ftKB)
Surface	10/16/2011	8 5/8	24.00	J-55	13	669
Production Casing	10/18/2011	4 1/2	11.60	M-80	13	7242

Cement			
Des	Start Date	Top (ftKB)	Btm (ftKB)
Surface Casing Cement	10/16/2011	13.0	669.0
Production Casing Cement	10/19/2011	2,276.0	7,242.0
Balanced Plug (Tubing and Annulus)	11/9/2022	6,361.0	6,874.0

Zone Statuses					
Zone Name	Status Date	Status	Fluid Type	Job	Prod Method
CODELL	11/26/2011	PR	Water	Abandon Well - Temporary, 11/8/2022 07:00	Flowing
CODELL	11/9/2022	Closed			
NIOBRARA	3/22/2017	SI		Abandon Well - Temporary, 11/8/2022 07:00	
NIOBRARA	11/9/2022	Closed			

Perforation Data					
Linked Zone	Explosive Type	Entered Shot Total	Top (ftKB)	Btm (ftKB)	Date
NIOBRARA, Original Hole	B	25	6,879.0	6,891.0	11/16/2011
NIOBRARA, Original Hole	C	25	6,960.0	6,972.0	11/16/2011
CODELL, Original Hole		48	7,046.0	7,058.0	11/11/2011

Stimulation Intervals			
Zone	Start Date	Top (ftKB)	Btm (ftKB)
NIOBRARA, Original Hole	11/16/2011	6,879.0	6,972.0
CODELL, Original Hole	11/16/2011	7,046.0	7,058.0

Other In Hole					
Run Date	Des	Make	OD (in)	Top (ftKB)	Btm (ftKB)

Logs			
Date	Type	Depth Top (MD) (ftKB)	Btm (ftKB)
10/18/2011	Caliper/Comp. Density/Neutron/GR/SP/ML	2,800	7,249.0
10/18/2011	DIL/GR/SP/Caliper	669	7,249.0
11/9/2011	CBL/CCL/GR	2,122	7,142.0
1/28/2019	GYRO	13	6,900.0

Plug Back Total Depths			
Date	Type	Com	PBTD (ftKB)
11/9/2011	FILL	DEPTH-LOGGER/CBL	7,142
12/27/2011	PLUG REMNANTS		7,194