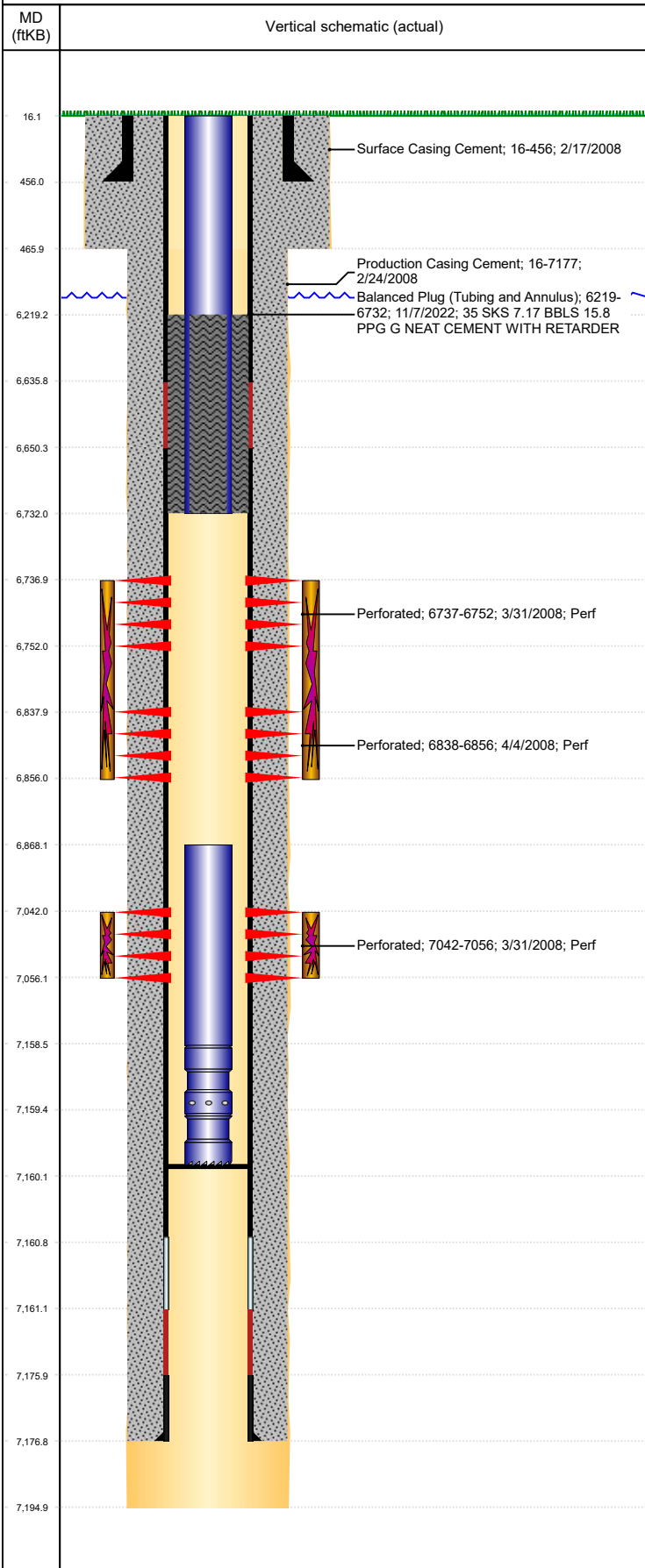




P&A Wellbore For State

Well Name: FRANK 13-25

Land, Original Hole, 11/18/2022 11:24:52 AM



Well Header									
Surface UWI 0512326660		Business Unit Rockies		Gov Auth Dist		Prod Tree Loc Land			
Orig. KB to Gnd (ft) 16.00		Original Spud Date 2/17/2008		Abandon Date		Well Sub-Status TA		High...	
								N	
Comment NIOBRARA FRAC SCREENED OUT. CEMENT BASKETS @4857', 4773', & 4348'									
Surface Location (Congressional)									
Qtr 3 NE	Qtr 4 NW	Section 13	Twonshp 4	Twonsh... N	Range 65	Rng E... W	Latitude (°) 40.31676	Longitude (°) -104.61615	
Wellbore Sections									
Section Des		Hole Size (in)		Act Top (ftKB)		Act Btm (ftKB)			
SURFACE		12 1/4		16.0		466.0			
PRODUCTION		7 7/8		466.0		7,195.0			
Casing Strings									
Csg Des		Run Date		OD (in)		Wt/Len (lb/ft)		Grade	
Surface		2/17/2008		8 5/8		24.00		M-80	
Production Casing		2/24/2008		4 1/2		11.60		16	
								Set Depth (MD) (ftKB)	
								7177	
Cement									
Des		Start Date		Top (ftKB)		Btm (ftKB)			
Surface Casing Cement		2/17/2008		16.0		456.0			
Production Casing Cement		2/24/2008		16.0		7,177.0			
Balanced Plug (Tubing and Annulus)		11/7/2022		6,219.0		6,732.0			
Zone Statuses									
Zone Name		Status Date		Status		Fluid Type		Job	
CODELL		11/29/2016		SI				Abandon Well - Temporary, 11/1/2022 10:00	
CODELL		11/7/2022		Closed					
NIOBRARA		4/22/2010		PR		Water		Abandon Well - Temporary, 11/1/2022 10:00	
NIOBRARA		11/7/2022		Closed					
								Prod Method	
								Flowing	
Perforation Data									
Linked Zone		Explosive Type		Entered Shot Total		Top (ftKB)		Btm (ftKB)	
NIOBRARA, Original Hole		A		60		6,737.0		6,752.0	
NIOBRARA, Original Hole		B		72		6,838.0		6,856.0	
CODELL, Original Hole				56		7,042.0		7,056.0	
								Date	
								3/31/2008	
								4/4/2008	
								3/31/2008	
Stimulation Intervals									
Zone		Start Date		Top (ftKB)		Btm (ftKB)			
NIOBRARA, Original Hole		4/6/2008		6,737.0		6,856.0			
CODELL, Original Hole		3/31/2008		7,042.0		7,056.0			
Other In Hole									
Run Date		Des		Make		OD (in)		Top (ftKB)	
								Btm (ftKB)	
Logs									
Date		Type				Depth Top (MD) (ftKB)		Btm (ftKB)	
2/22/2008		COMPENSATED DENSITY				3,600		7,173.0	
2/22/2008		INDUCTION				400		7,193.0	
3/27/2008		CEMENT BOND				50		7,137.0	
1/21/2019		GYRO				16		6,900.0	
Plug Back Total Depths									
Date		Type		Com				PBTD (ftKB)	
3/27/2008		FILL		DEPTH LOGGER ON CBL				7,139	
11/19/2008		FILL		CLEAN OUT				7,160	