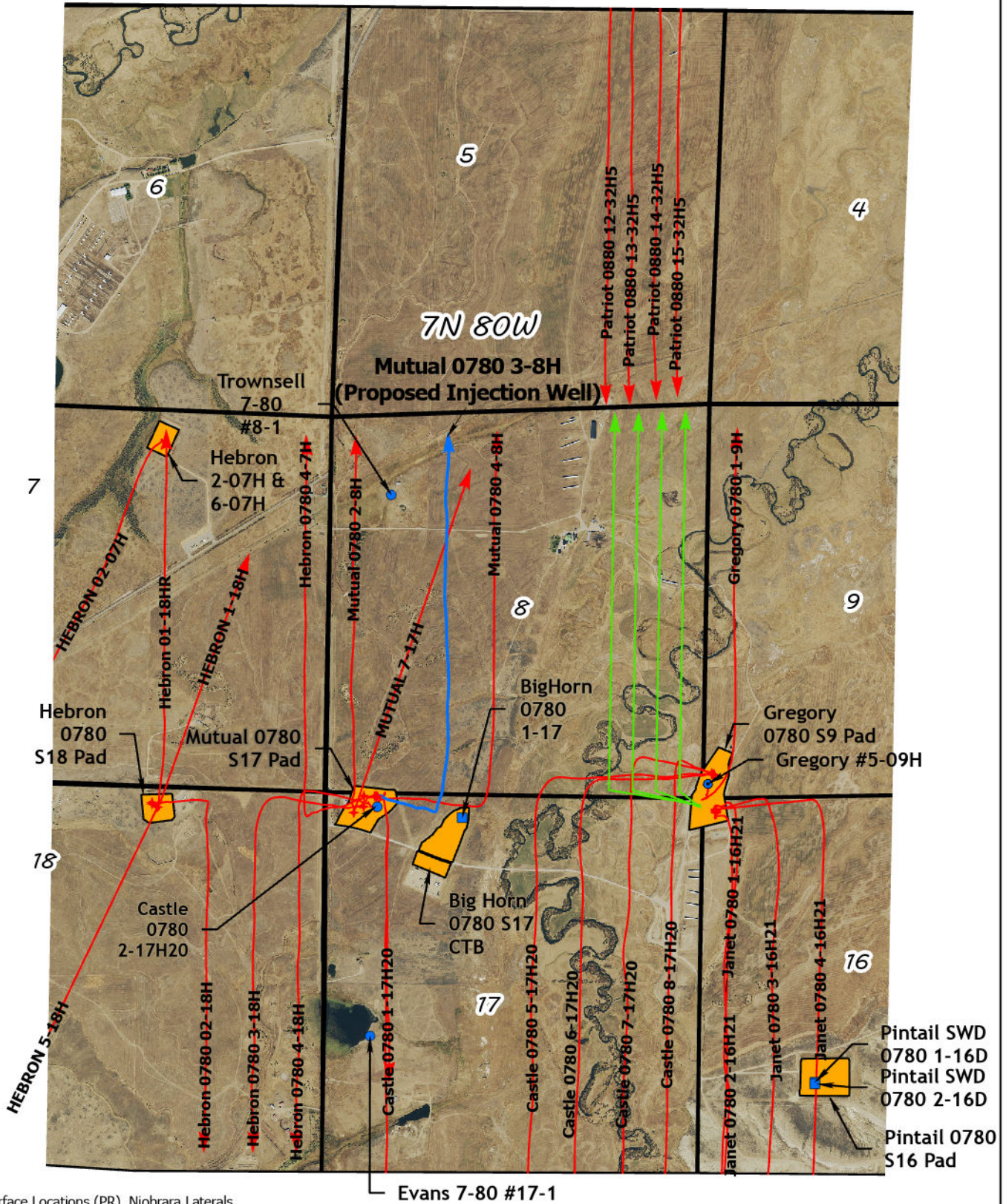


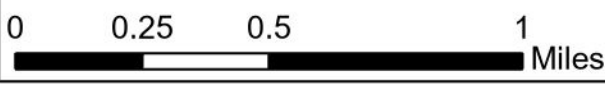
# MUTUAL EOR Unit

Unit Area Well Plat  
Jackson County, Colorado  
North Park Horizontal Niobrara Field



## Legend

- + COGCC Well Surface Locations (PR) Niobrara Laterals
- UIC Well
- Dry and Abandoned
- Plugged and Abandoned
- Facilities
- Mutual 0780 3-8H
- All Other Niobrara Laterals
- Unit Boundary
- Proposed Laterals



Nearby Crossroads - State Highway 14 & Jackson County Road 24



**NORTH PARK ENGINEERING & CONSULTING, INC.**

P.O. BOX 395  
WALDEN, CO 80480  
(970) 723-3725

DRAWING COMPLETION: 10/12/2022

DRAWN BY: ADL      CHECKED BY: RRM