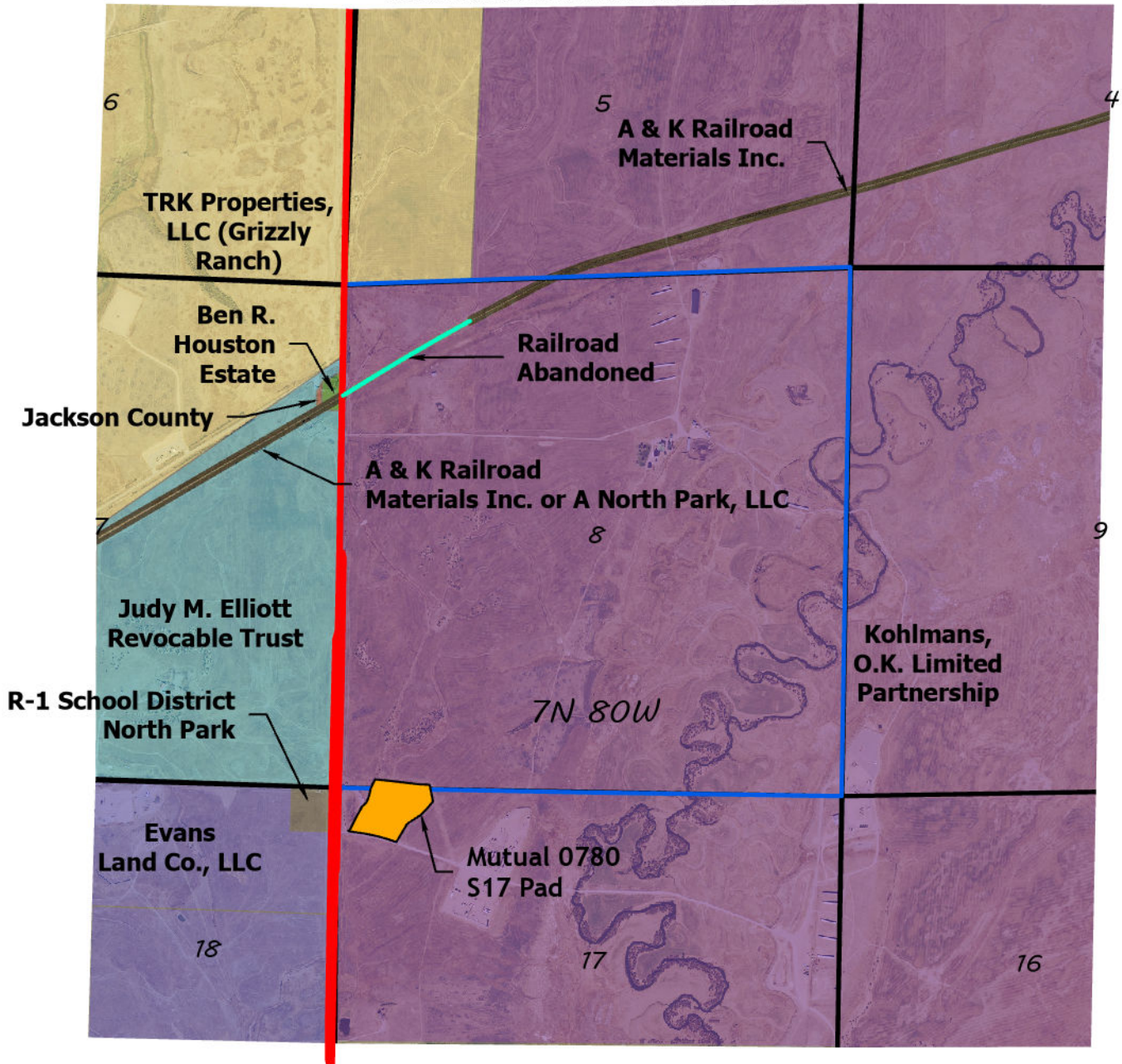


MUTUAL S8 EOR Unit

Location Vicinity Surface Ownership
 Jackson County, Colorado
 North Park Horizontal Niobrara Field



Legend

- Unit Boundary
- CDOT ROW
- Ben R. Houston Estate
- Evans Land Co.
- Jackson County
- Judy M. Elliott Revocable Trust
- Kohlmans, O.K. Limited Partnership
- TRK Properties, LLC (Grizzly Ranch)
- A & K Railroad Materials Inc.
- R-1 School District North Park
- Railroad Abandoned¹

Nearby Crossroads - State Highway 14 & Jackson County Road 24



NORTH PARK ENGINEERING & CONSULTING, INC.

P.O. BOX 395
 WALDEN, CO 80480
 (970) 723-3725

DRAWING COMPLETION: 10/12/2022

DRAWN BY: ADL

CHECKED BY: RRM