



Radial Bond
Gamma Ray
Casing Collar Log

Company	Civitas Resources	Country	USA
Well	Collins 14-20		
Field	Wattenberg		
County	Adams		
State	Colorado		
Location:	SEC 20 TWP 1S RGE 65W	API # : 05-001-06650	Other Services N/A
Permanent Datum	Ground Level	Elevation	5173'
Log Measured From	KB		
Drilling Measured From	KB		
		Elevation	K.B. 5183'
			D.F.
			G.L. 5173'

Date	16NOV2022
Run Number	One
Depth Driller	8202'
Depth Logger	4051'
Bottom Logged Interval	4055
Top Log Interval	Surface
Open Hole Size	7.875"
Type Fluid	Water
Density / Viscosity	---
Max. Recorded Temp.	128.5
Estimated Cement Top	
Time Well Ready	1100
Time Logger on Bottom	1130
Equipment Number	506
Location	Kersey, Co
Recorded By	J. Keel
Witnessed By	H. Terrazas

	Borehole Record		Tubing Record				
	Bit	From	To	Size	Weight	From	To
Casing Record							
Surface String							
Prot. String							
Production String							
Liner							

<<< Fold Here >>>

All interpretations are opinions based on inferences from electrical or other measurements and we cannot and do not guarantee the accuracy or correctness of any interpretation, and we shall not, except in the case of gross or willful negligence on our part, be liable or responsible for any loss, costs, damages, or expenses incurred or sustained by anyone resulting from any interpretation made by any of our officers, agents or employees. These interpretations are also subject to our general terms and conditions set out in our current Price Schedule.

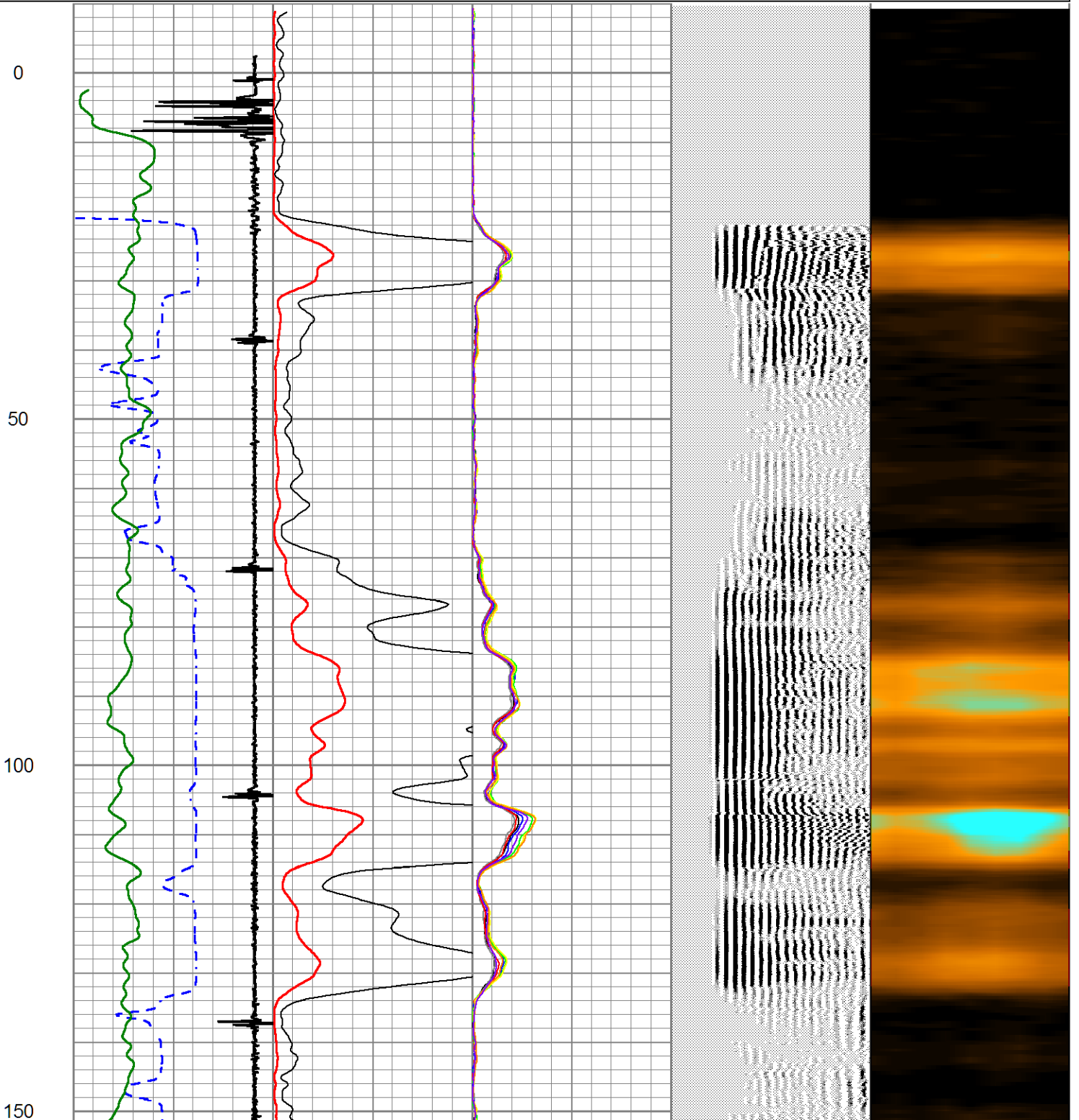
Comments



Main Pass 0 PSI

Database File civitascollins 14-20.db
 Dataset Pathname pass3
 Presentation Format civitas
 Dataset Creation Wed Nov 16 11:21:13 2022
 Charted by Depth in Feet scaled 1:240

400	TT (usec)	200	0	AMP (mV)	100	0	AMPS1	150	200	VDL (usec)	1200	1	RADIAL MAP	8
10	CCL\$1	-1	0	AMPx5 (mV)	20	0	AMPS2	150						
0	GR (GAPI)	150				0	AMPS3	150						
						0	AMPS4	150						
						0	AMPS5	150						
						0	AMPS6	150						
						0	AMPS7	150						
						0	AMPS8	150						

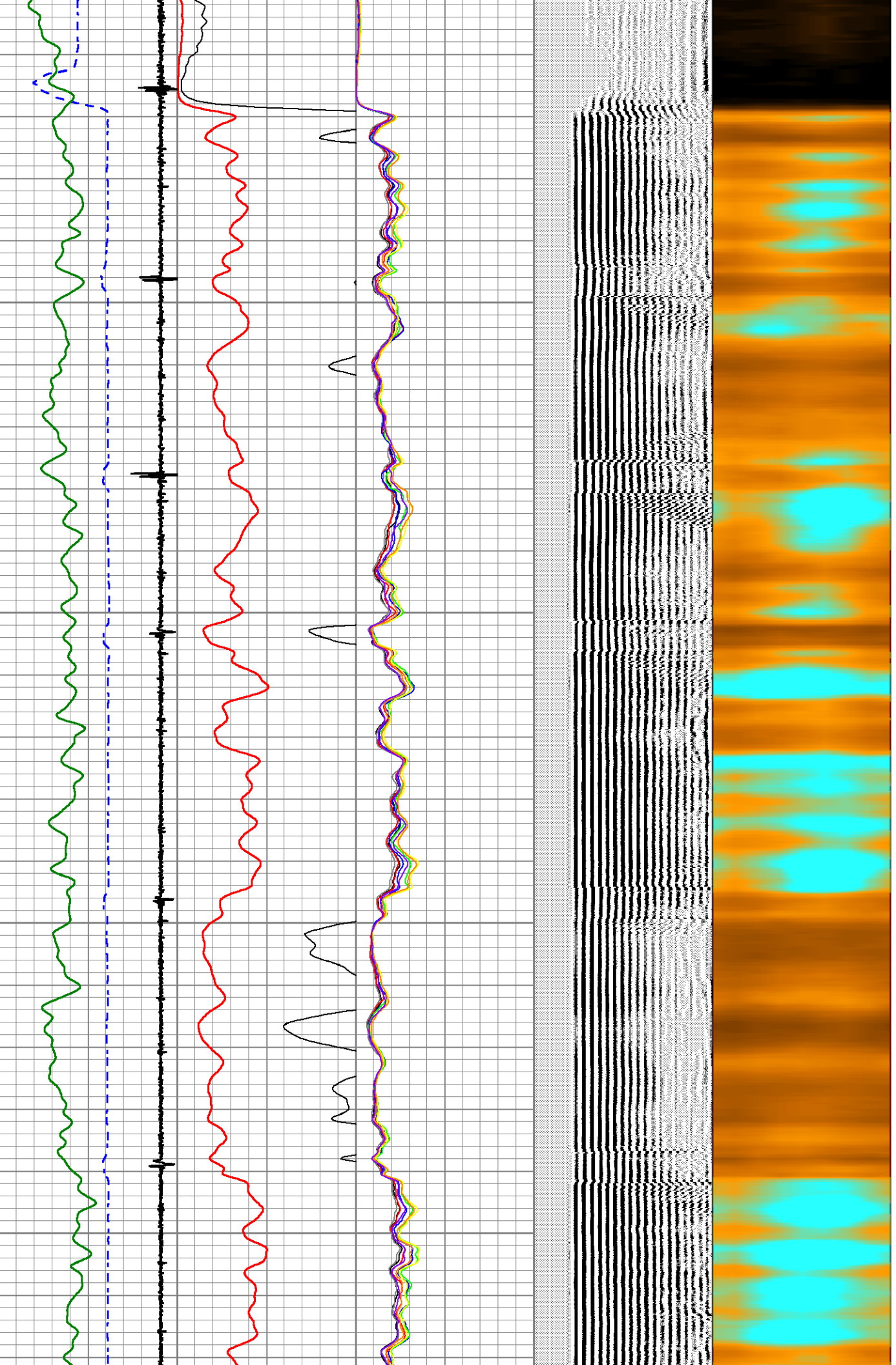


200

250

300

350

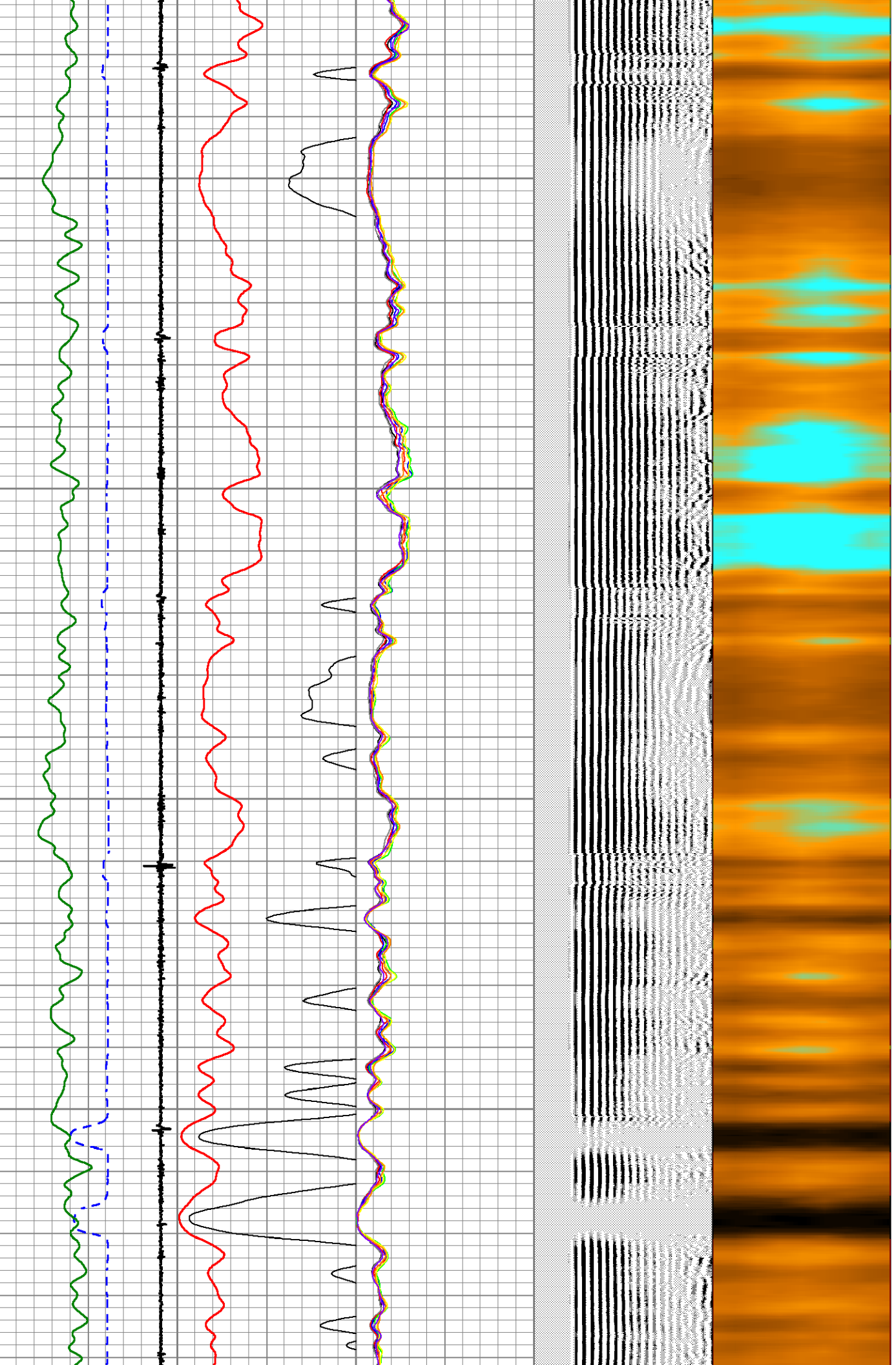


400

450

500

550



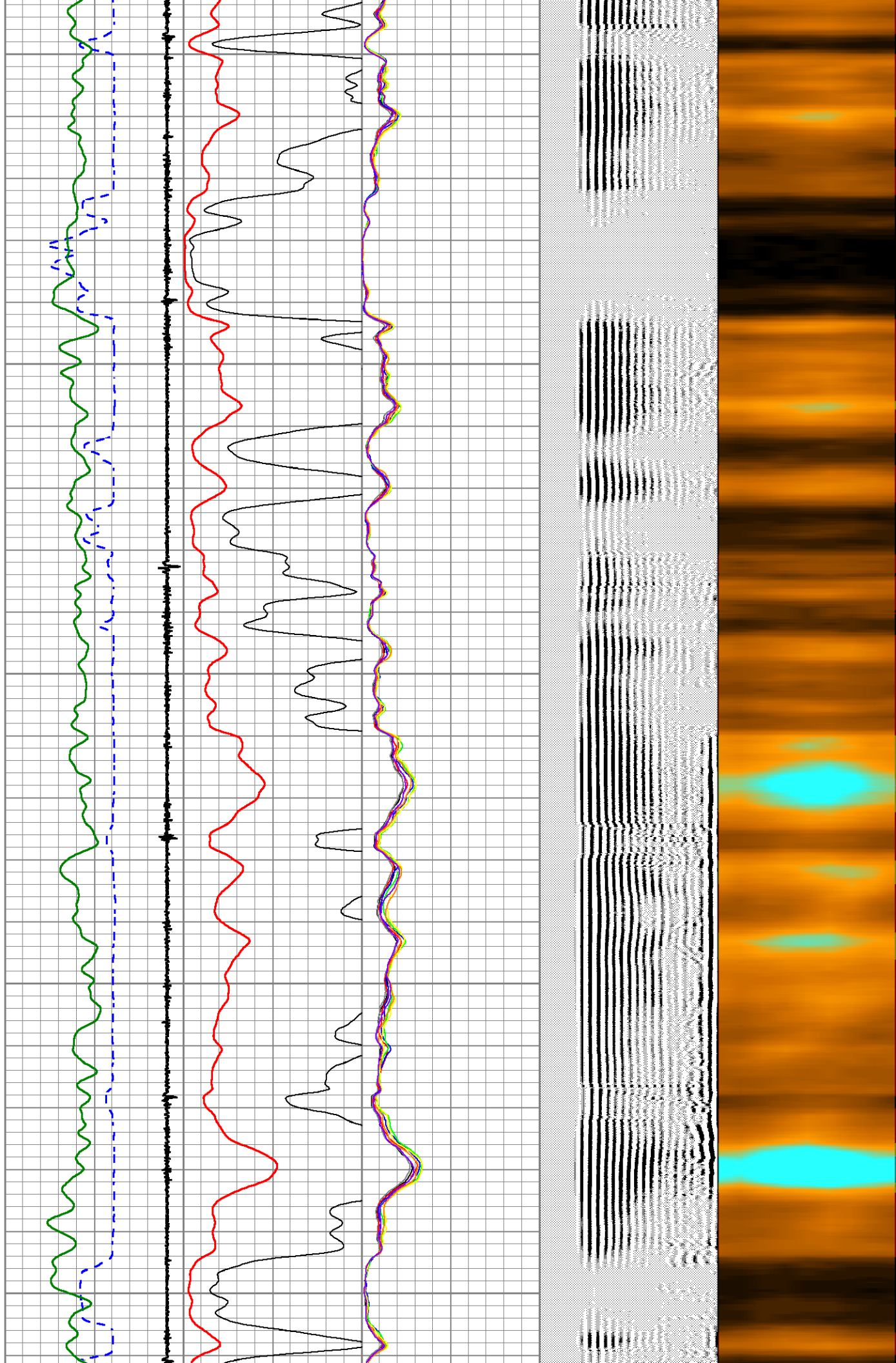
600

650

700

750

800

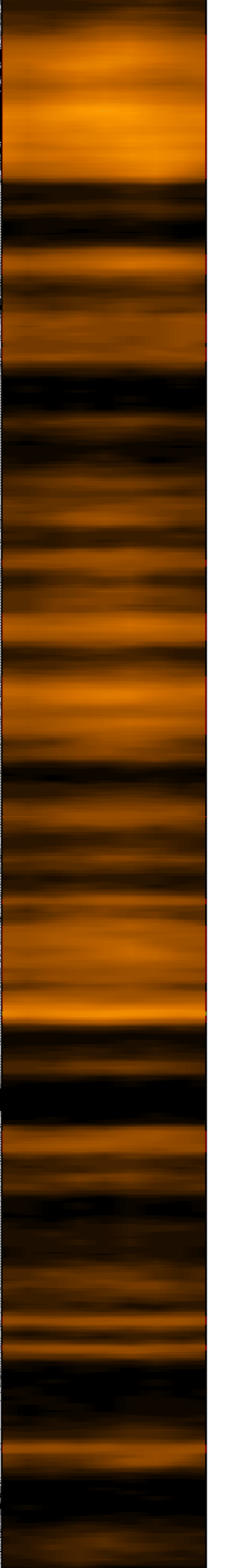
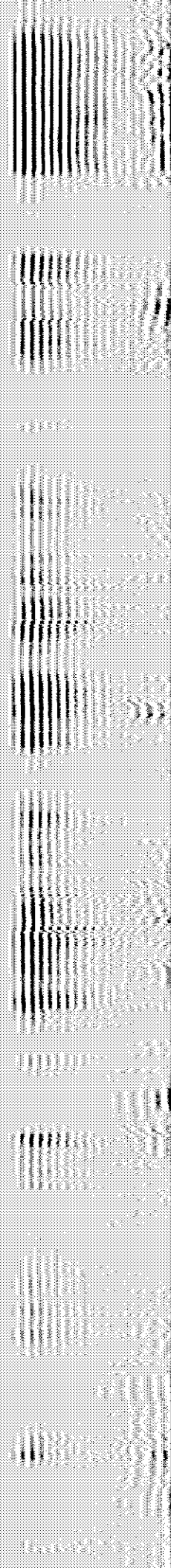
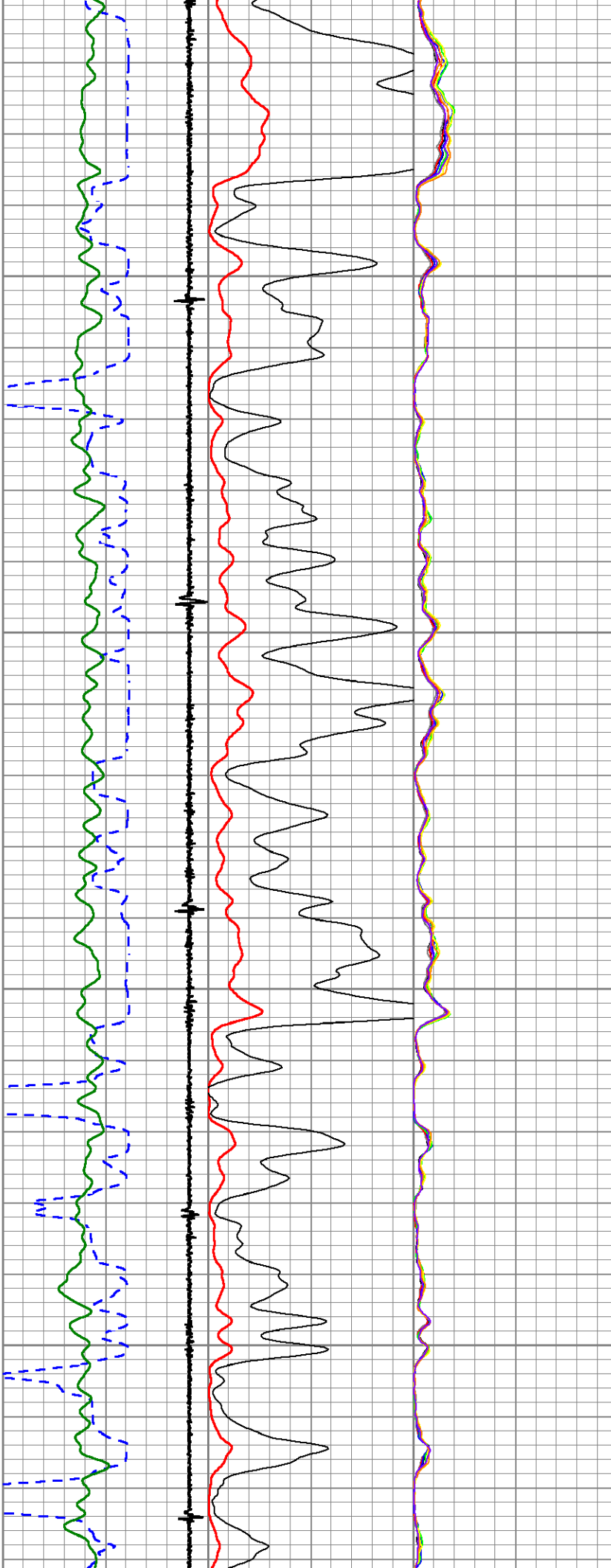


850

900

950

1000



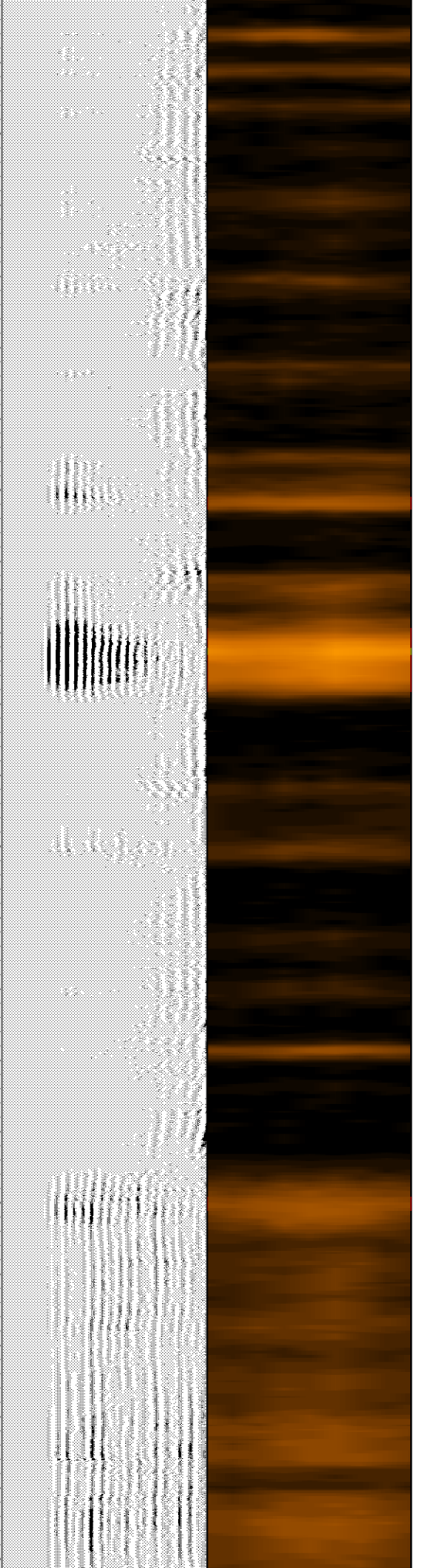
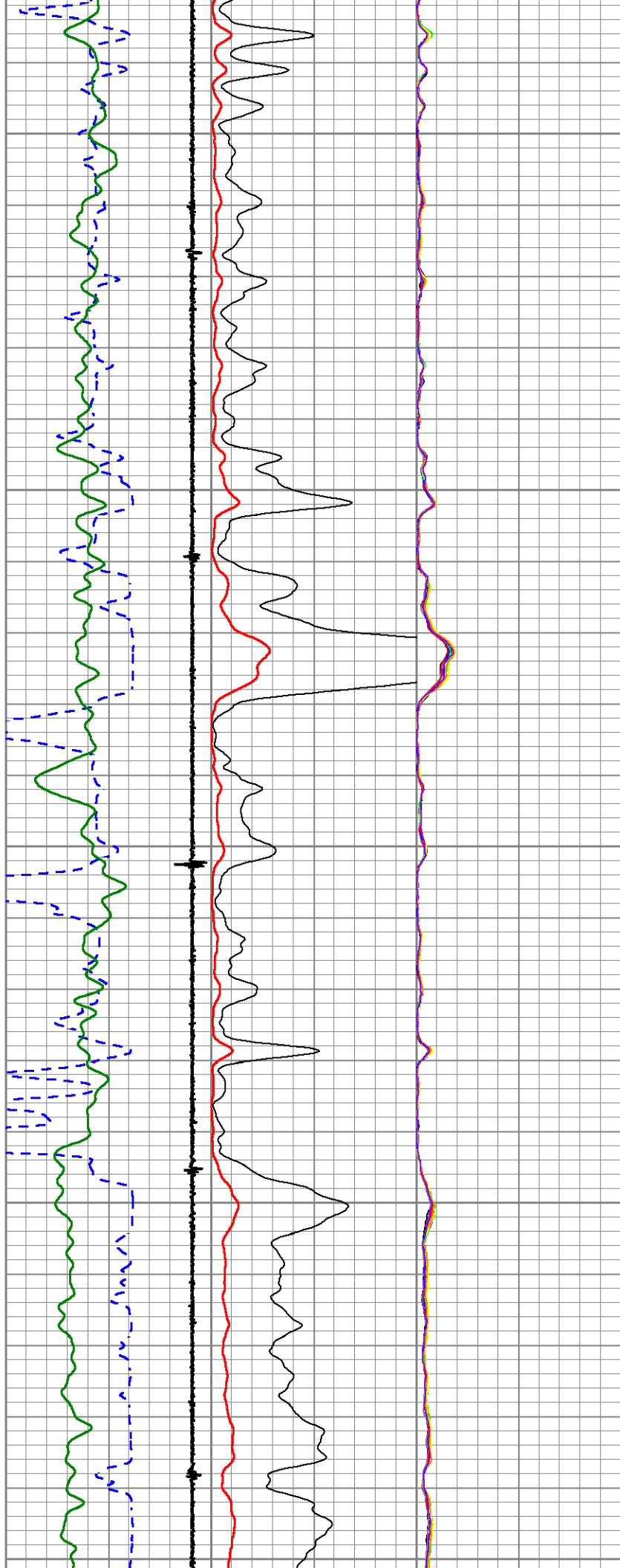
1050

1100

1150

1200

1250

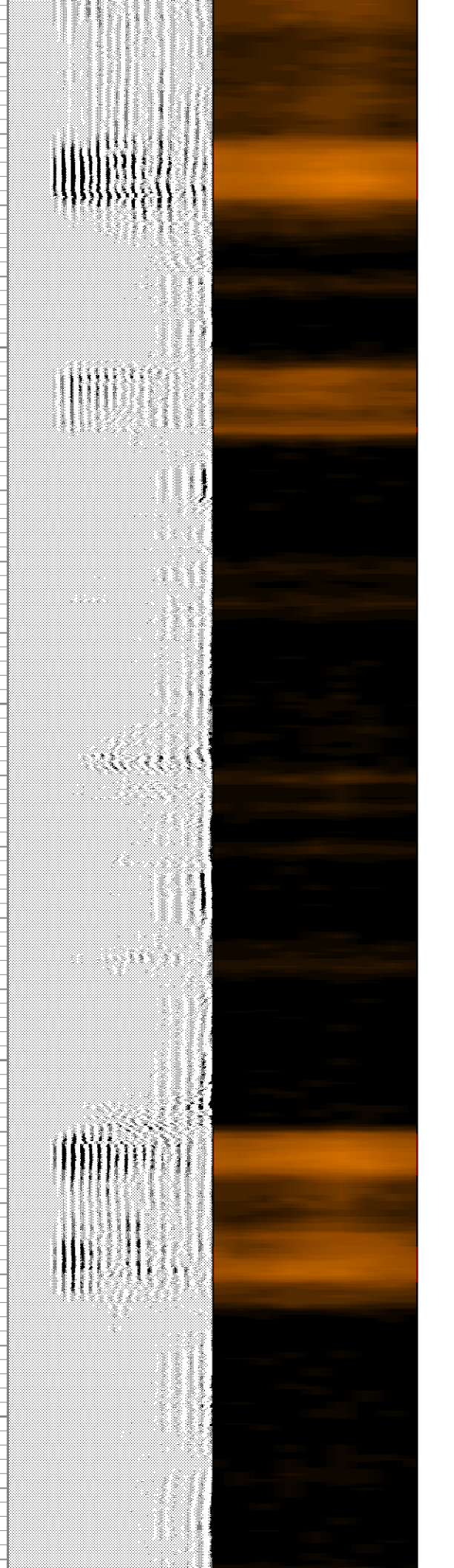
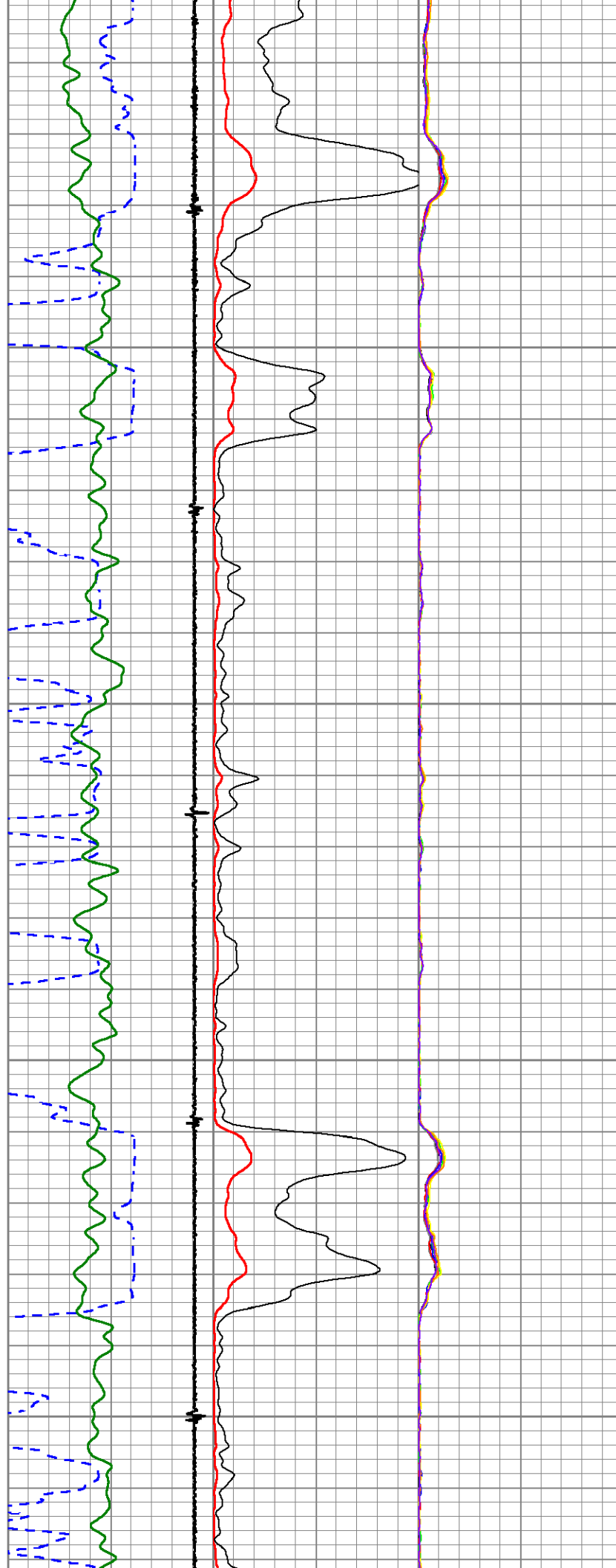


1300

1350

1400

1450

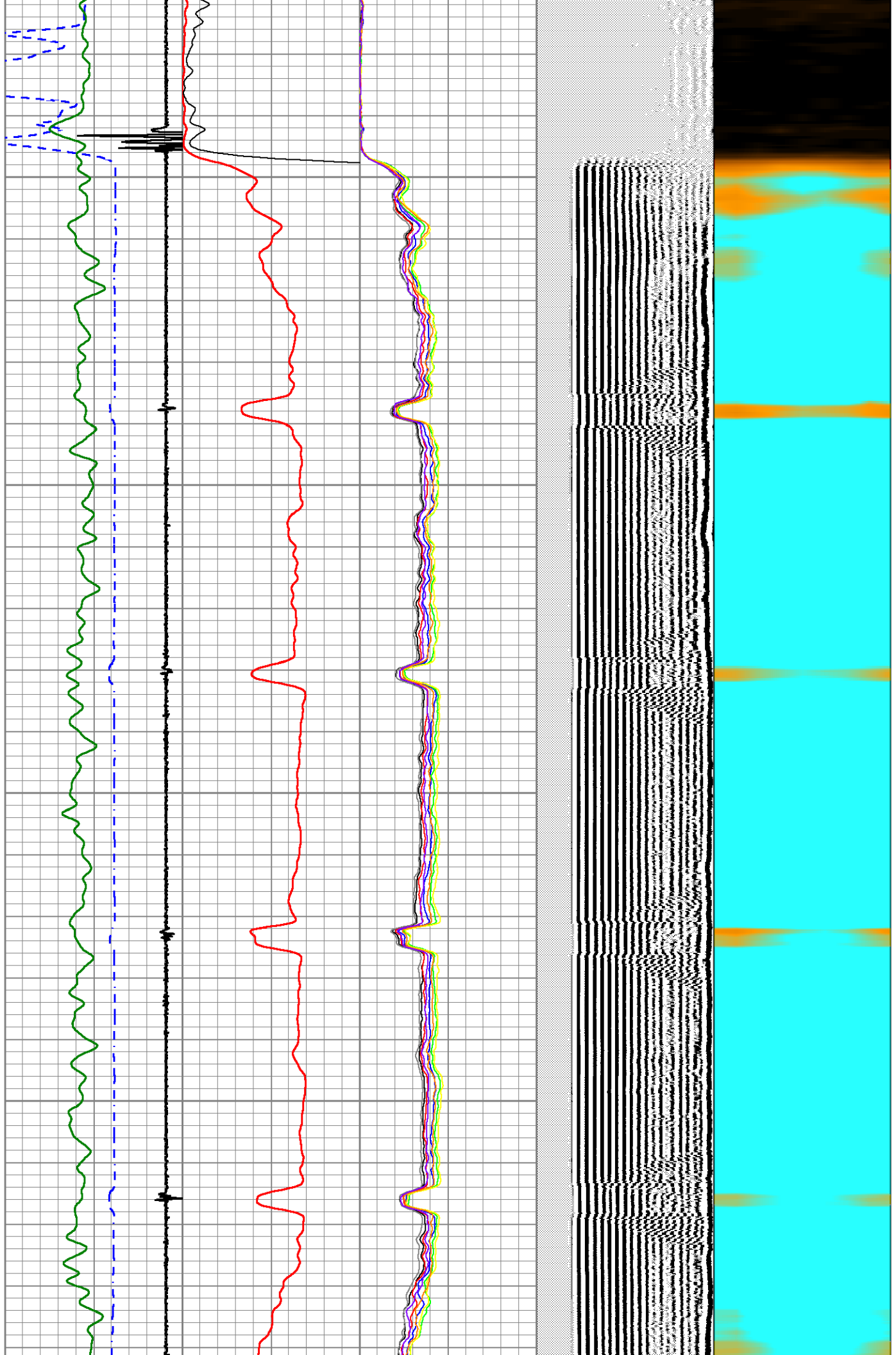


1500

1550

1600

1650



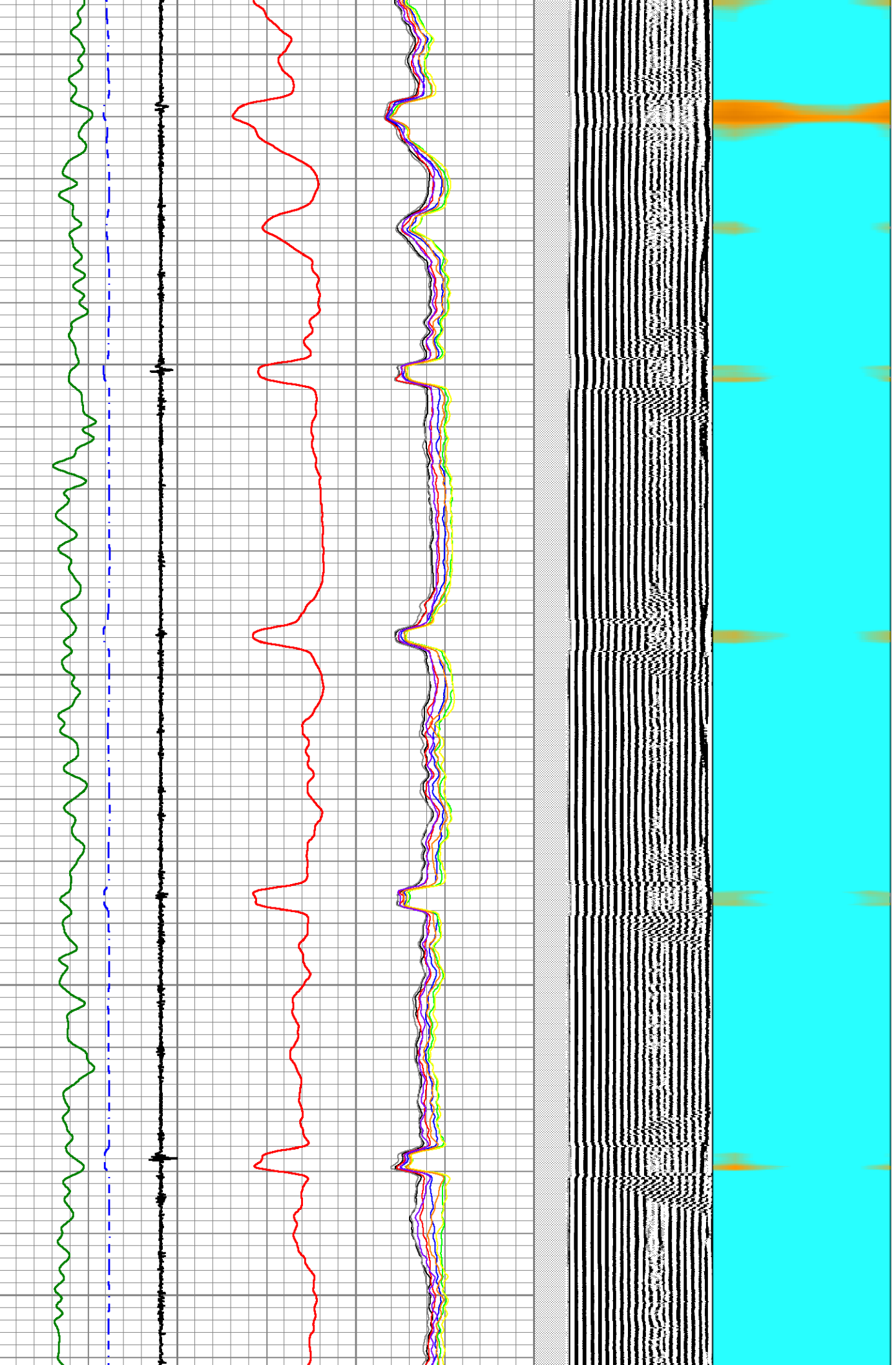
1700

1750

1800

1850

1900

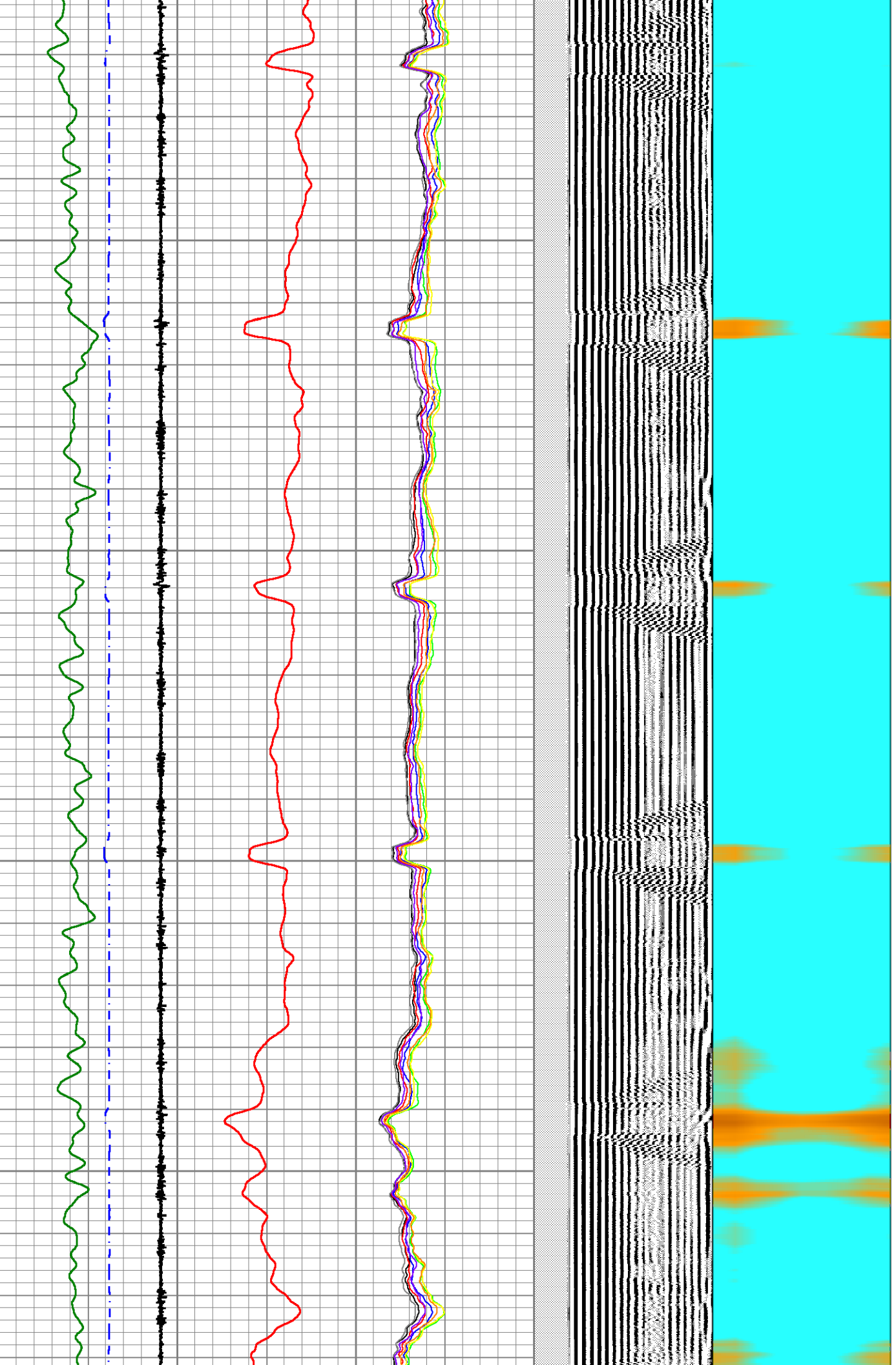


1950

2000

2050

2100



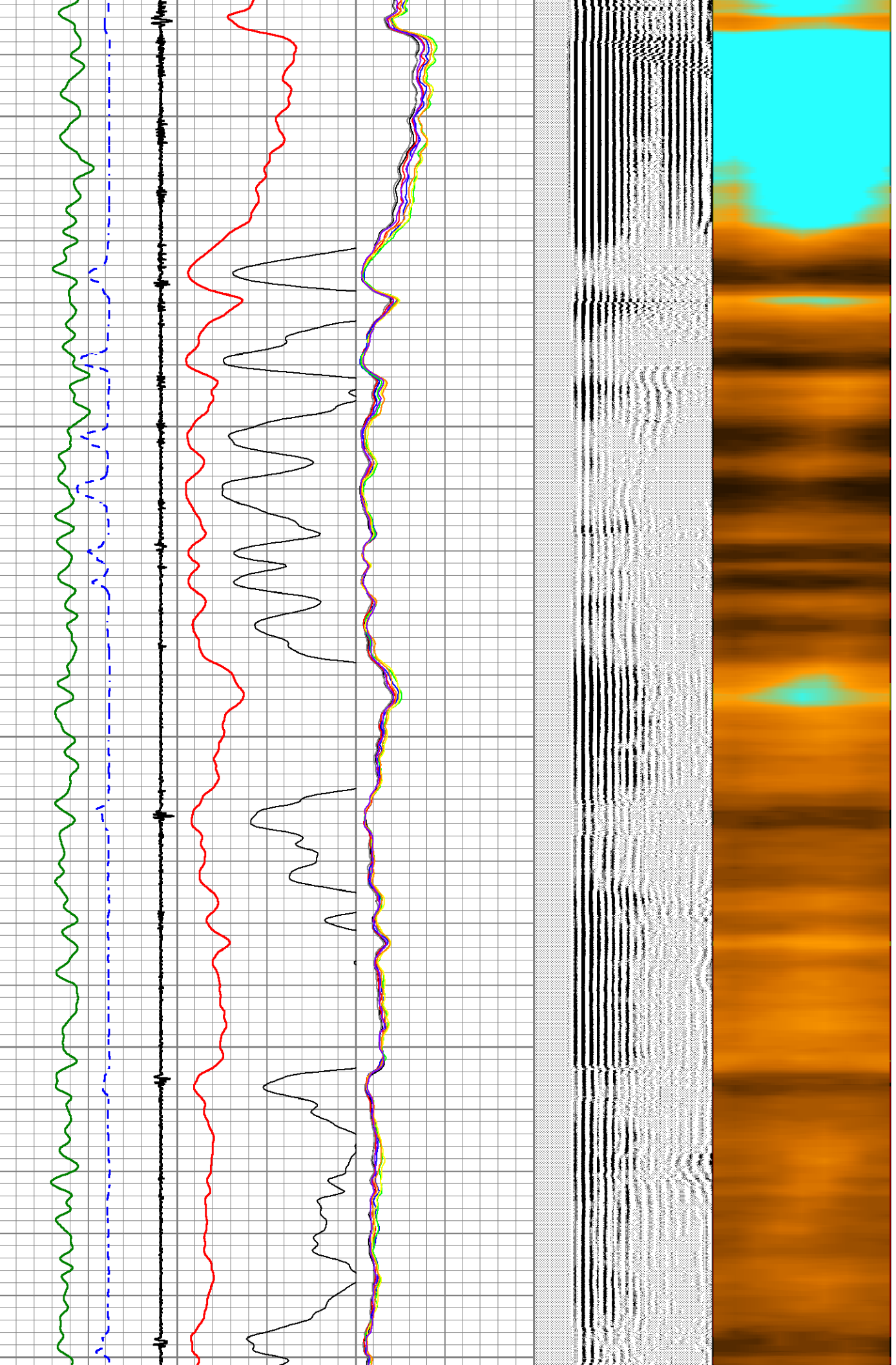
2150

2200

2250

2300

2350

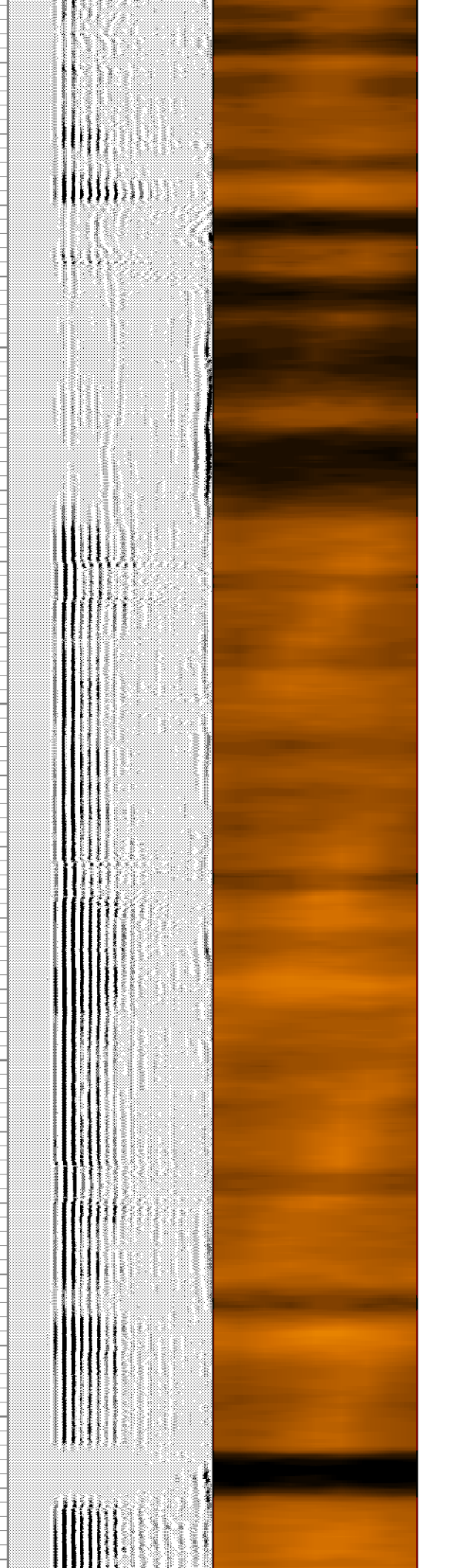
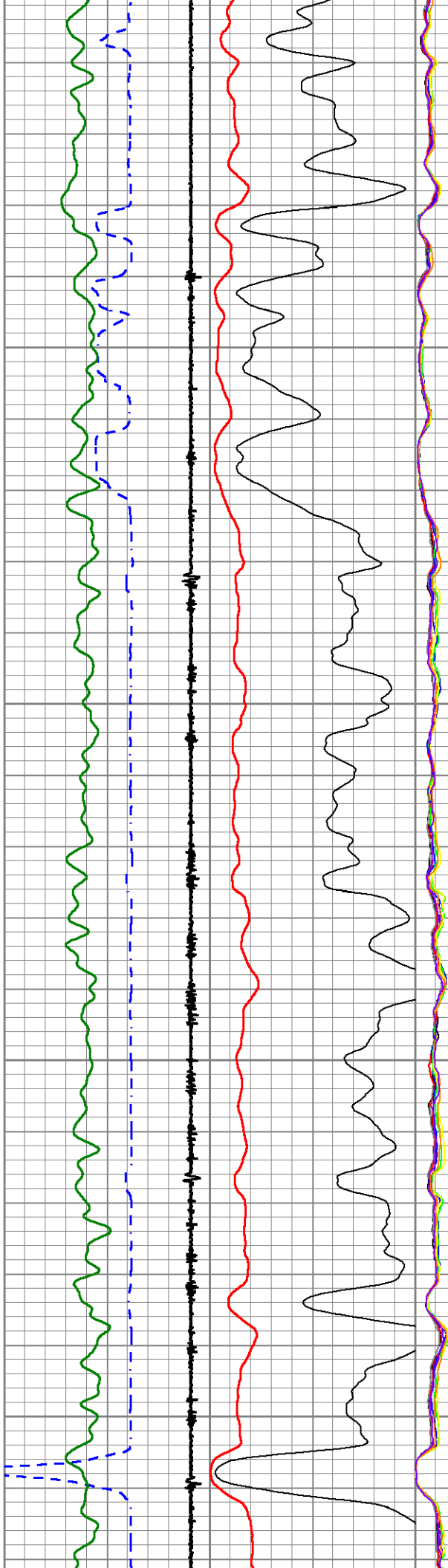


2400

2450

2500

2550

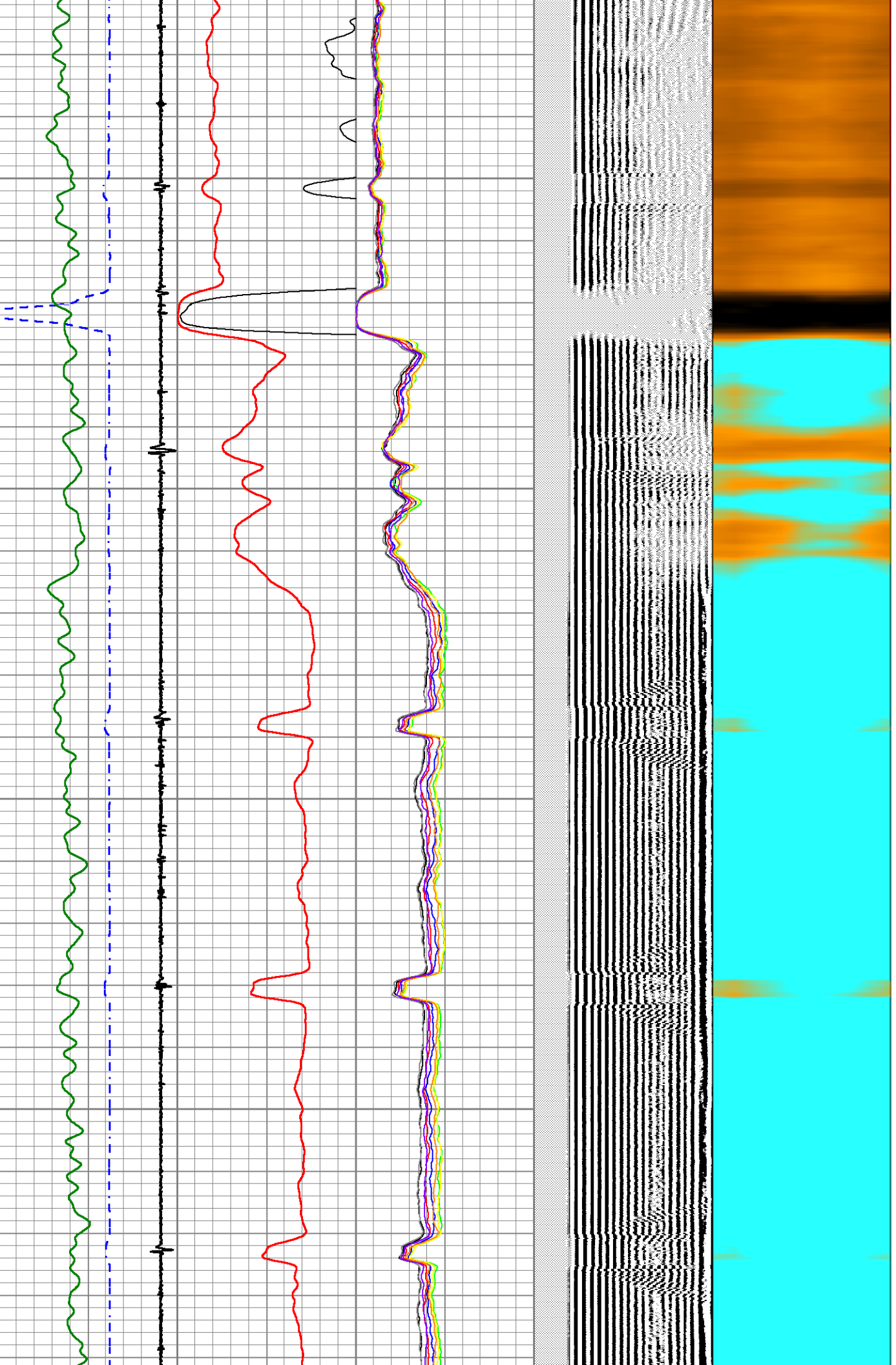


2600

2650

2700

2750



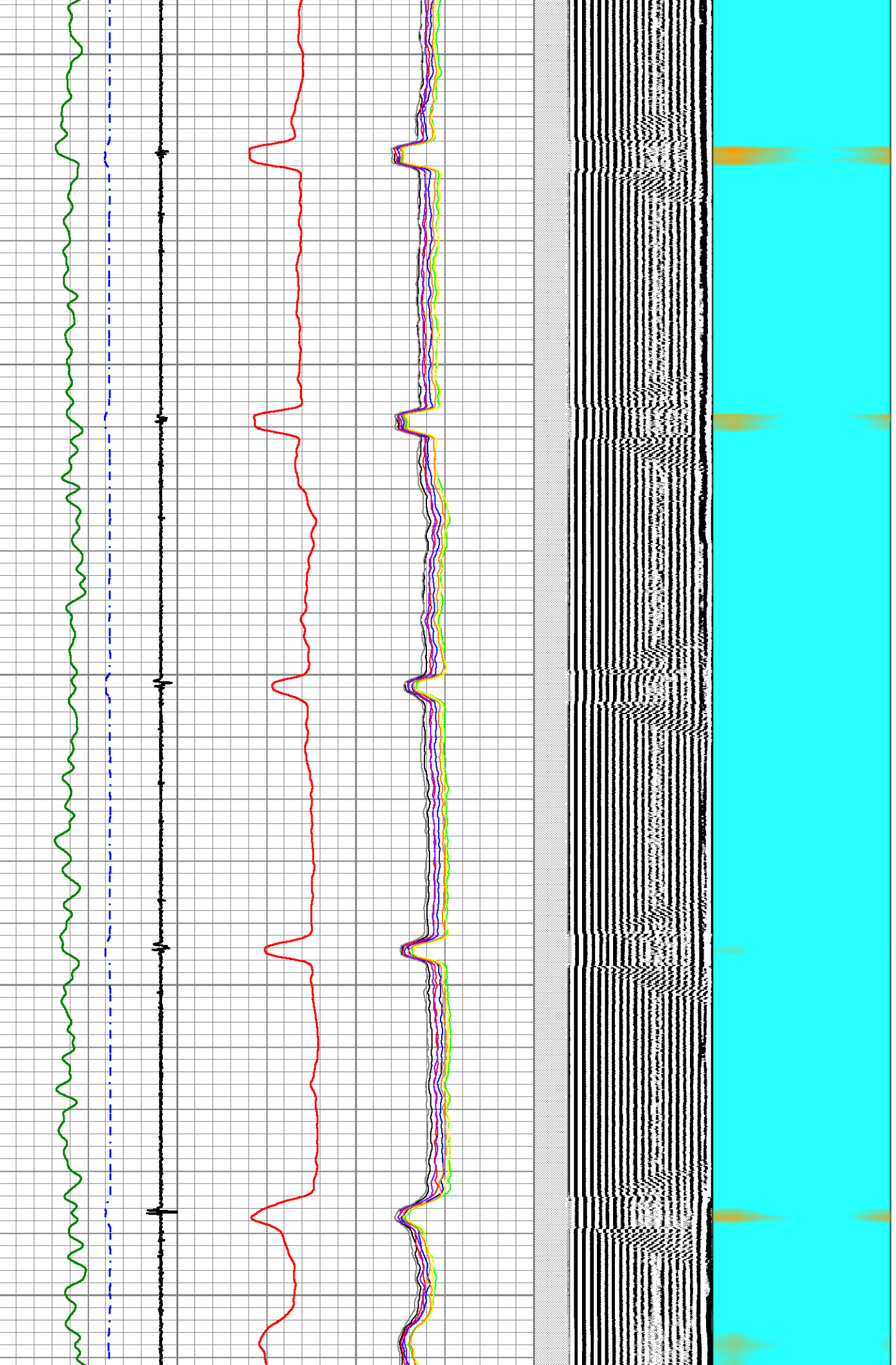
2800

2850

2900

2950

3000

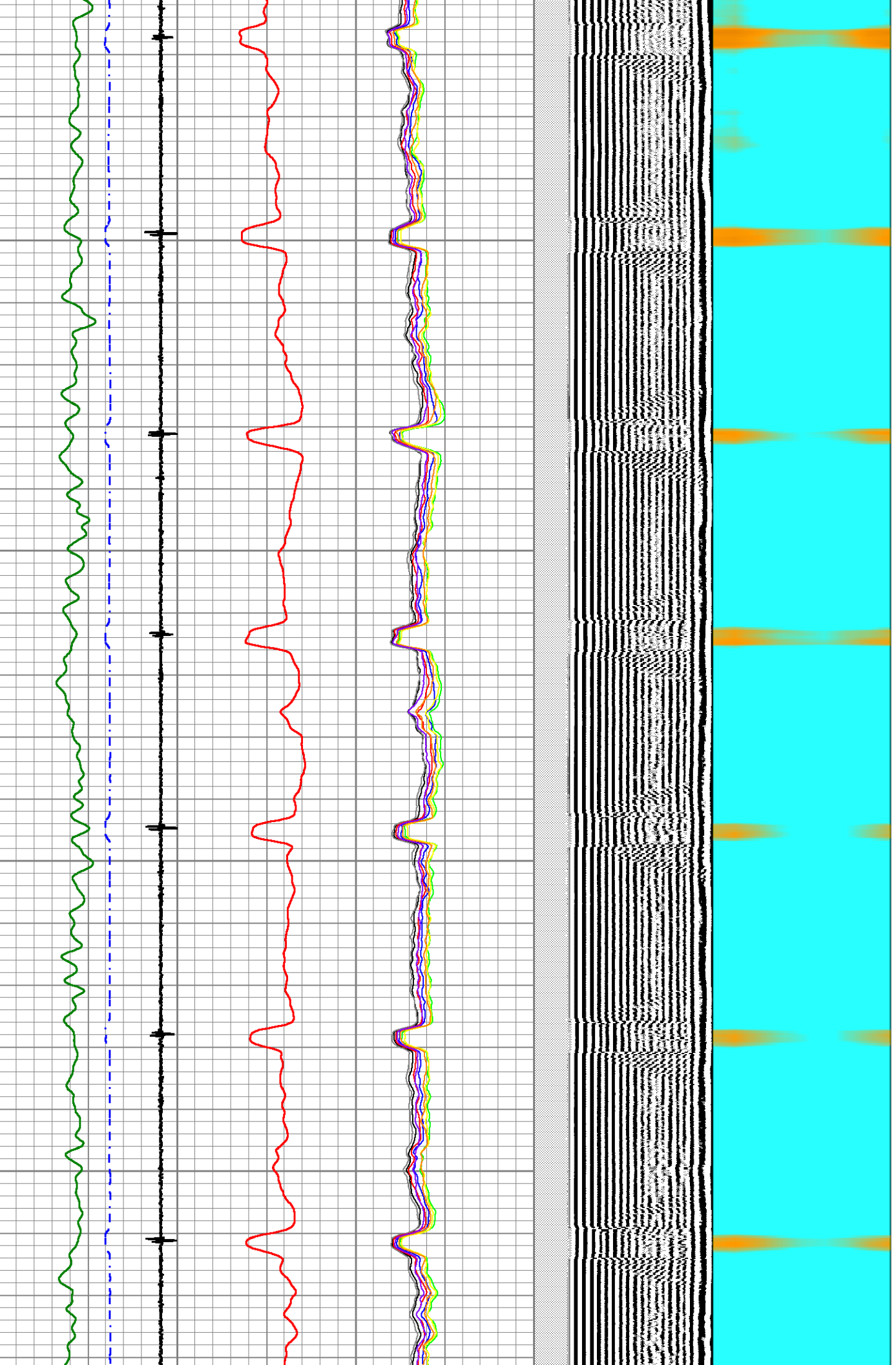


3050

3100

3150

3200



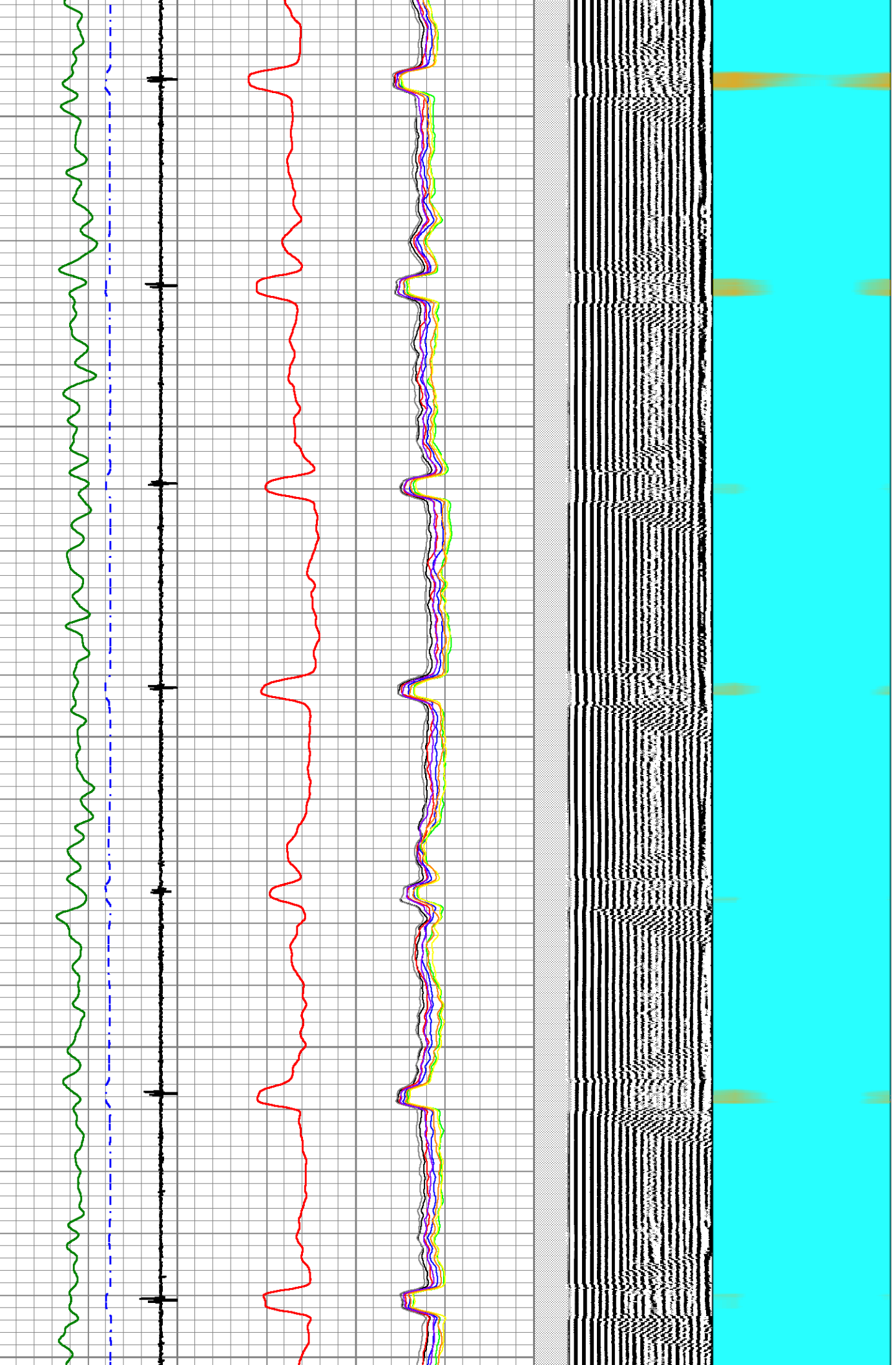
3250

3300

3350

3400

3450

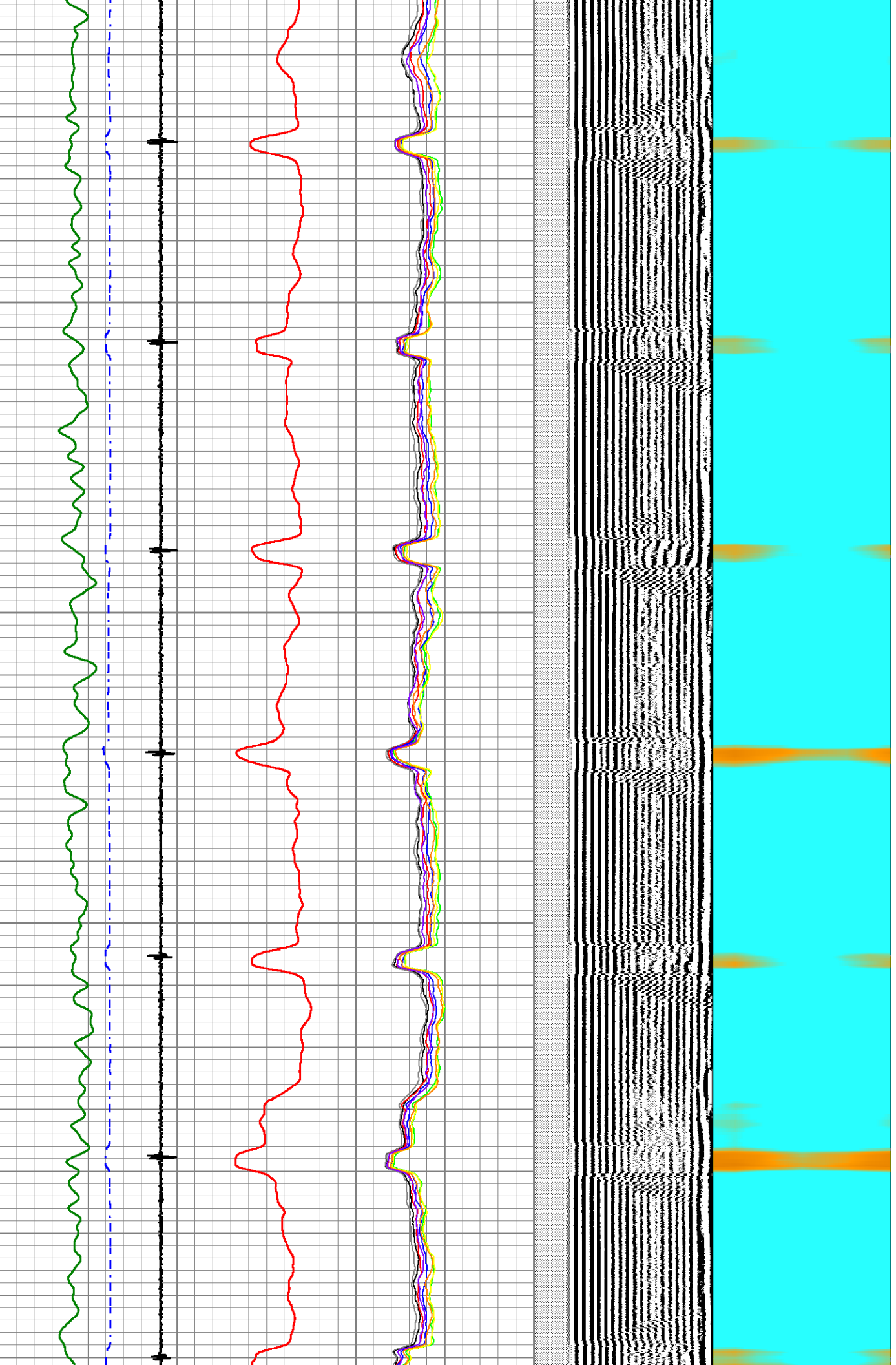


3500

3550

3600

3650

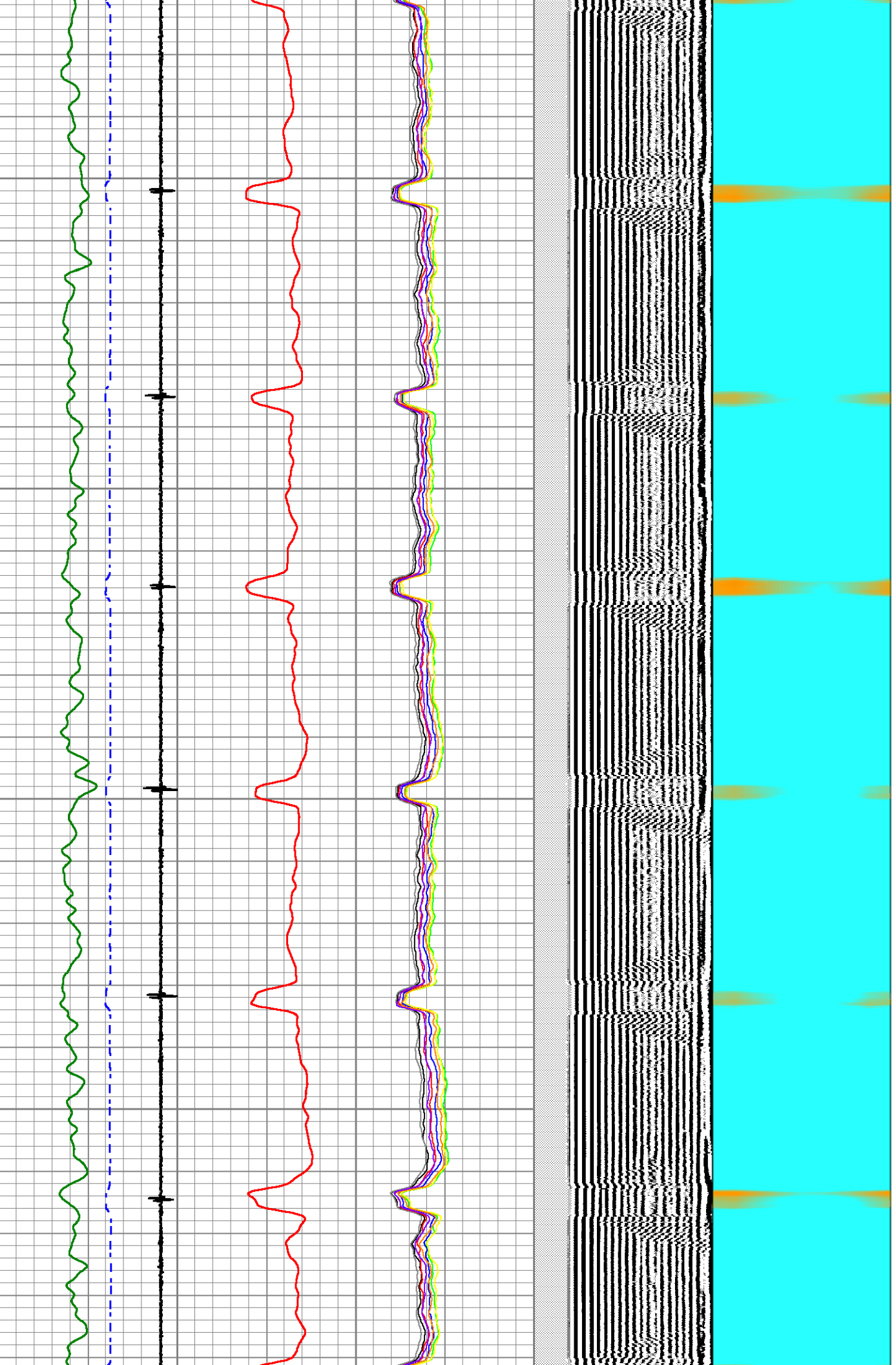


3700

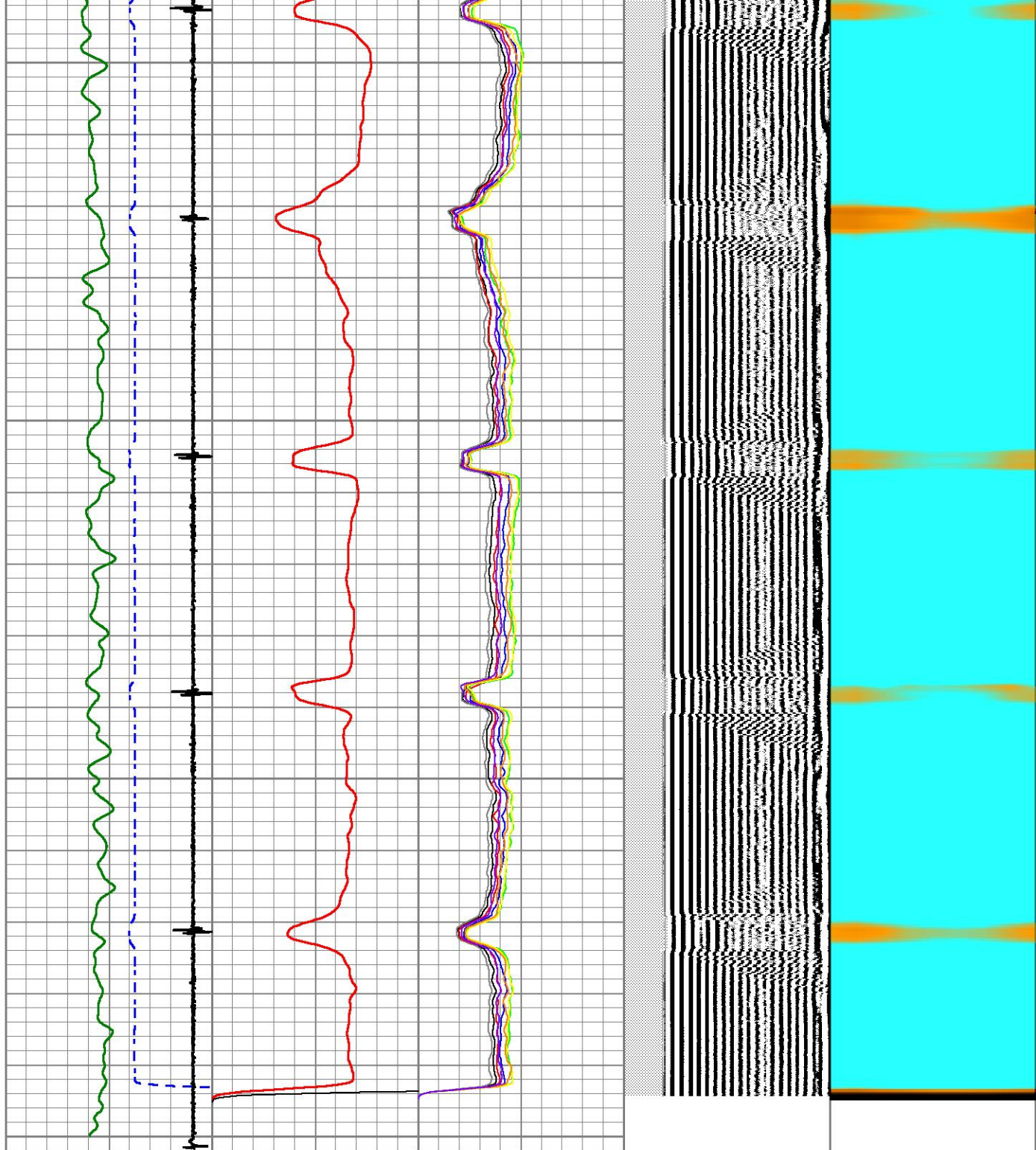
3750

3800

3850



3900
3950
4000
4050



400	TT (usec)	200	0	AMP (mV)	100	0	AMPS1	150	200	VDL (usec)	1200	1	RADIAL MAP	8
10	CCL\$1	-1	0	AMPx5 (mV)	20	0	AMPS2	150						
0	GR (GAPI)	150				0	AMPS3	150						
						0	AMPS4	150						
						0	AMPS5	150						
						0	AMPS6	150						
						0	AMPS7	150						
						0	AMPS8	150						

Sensor	Offset (ft)	Schematic	Description	Length (ft)	O.D. (in)	Weight (lb)
ErrCt	20.68					

			CENT-BC170-000 CENT 1.70 Probe	3.14	1.70	15.00
			RBT-Probe 1.70 (FW1905-116) Probe Radii Bond Tool with Digital Telemetry	9.63	1.70	70.00
WVFSYNC	12.25					
WVFS8	12.25					
WVFS7	12.25					
WVFS6	12.25					
WVFS5	12.25					
WVFS4	12.25					
WVFS3	12.25					
WVFS2	12.25					
WVFS1	12.25					
WVFCAL	12.25					
WVF3FT	12.25					
WVF5FT	11.16					
			CENT-BC170-000 CENT 1.70 Probe	3.14	1.70	15.00
GCT_HV	4.77					
CCL\$2	3.81					
CCL\$1	3.81					
GCT_Temp	3.26					
GR	2.39		GC-GCT170-000 (FW1905-048) Probe Gamma Ray-CCL w/Temp	4.77	1.70	35.50

Dataset: civitascollins 14-20.db: field/well/run1/pass3
 Total length: 20.68 ft
 Total weight: 135.50 lb
 O.D.: 1.70 in