

Colorado Oil and Gas Conservation Commission

# TEP Fed. RG 11-13-298, #482958 Annotation Report









Created on November 28, 2022



Captured on November 21, 2022




## Location

Label	Title	Elevation	Coordinates
1 	Missing point of discharge	6638.68 ft	39.8830589, -108.3463230
2 	Missing point of discharge	6645.89 ft	39.8817811, -108.3468031
3 	Sediment Trap	6633.82 ft	39.8820129, -108.3456702
4 	Sediment Trap	6618.99 ft	39.8817374, -108.3473663
5 	Sediment Trap	6595.66 ft	39.8831298, -108.3471382
6 	Stormwater Diversion Ditch	6618.28 ft	39.8825156, -108.3472460

## Area

Label	Title	Area	Surface Area
7 	Disturbance Area minus topsoil stockpile	7.87 acres	8.57 acres
8 	Topsoil stockpile	0.59 acres	0.70 acres

## Volume

Label	Title	Area	Cut	Fill	Net	Tolerance
9 	Topsoil Stockpile	0.58 acres	10467.76 y <sup>3</sup>	161.54 y <sup>3</sup>	-10306.22 y <sup>3</sup>	0 ft



Colorado Oil and Gas Conservation Commission



# TEP Fed. RG 11-13-298, #482958 Issue Report

Created on November 28, 2022

Captured on November 21, 2022





3 - Incomplete Work

Open

Nov 21, 2022 at 2:49pm



Details

Summary:	Figures within SWMP #403047575 identifies a stormwater discharge point, to allow stormwater discharge from the working pad area of the Location to the storwmater diversion ditch; no outlet has been constructed on the northern end of the Location to allow for discharge per the SWMP.		
Created:	Nov 28, 2022, 12:42pm by Aaron Trujillo		
Cost of Repair:	—		
Coordinates:	39.88306, -108.34632		
Elevation:	6638.68 ft		



2 - Incomplete Work

Open

Nov 21, 2022 at 2:49pm



Details

Summary: **Figures within SWMP #403047575 identifies a stormwater discharge point, to allow stormwater discharge from the working pad area of the Location to the stormwater diversion ditch; no outlet has been constructed on the south end of the Location to allow for discharge per the SWMP.**

Created: Nov 28, 2022, 12:40pm by Aaron Trujillo

Cost of Repair: —

Coordinates: 39.88178, -108.34680

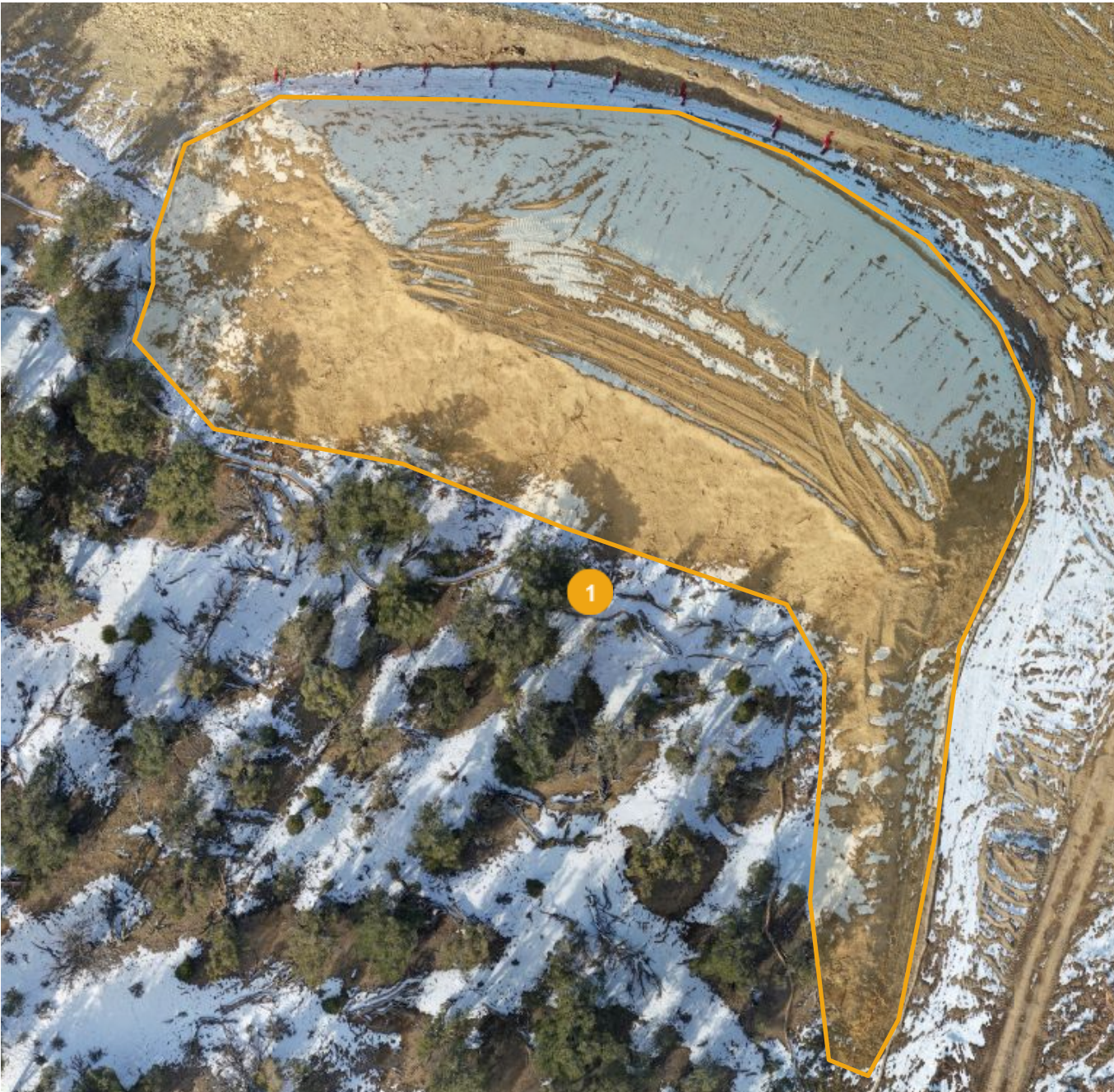
Elevation: 6645.89 ft



1 - Observation

Open

Nov 21, 2022 at 2:49pm



Details

Summary:	BMPs to stabilize and protect topsoil stockpile are missing or insufficient.
Created:	Nov 22, 2022, 3:01pm by Aaron Trujillo
Cost of Repair:	—
Coordinates:	39.88152, -108.34683
Area:	0.59 acres
Surface Area:	0.70 acres

# Inspection Photos

11/21/2022

Operator: TEP ROCKY MOUNTAIN LLC - 96850

Location #482958

Rio Blanco County, CO

Aaron Trujillo

NW Reclamation Specialist

COGCC



## Inspection Photos

Operator Name: TEP ROCKY MOUNTAIN LLC - 96850

Location #482958



**Photo 1:** Photos 1-2 taken from the south end of the Location. Photos provide an overview of the location from west, northwest, northeast to east.



Inspection Photos  
Operator Name: TEP ROCKY MOUNTAIN LLC - 96850  
Location #482958



**Photo 2:** See comment under photo 1.



## Inspection Photos

Operator Name: TEP ROCKY MOUNTAIN LLC - 96850

Location #482958



**Photo 3:** Photos 3-5 taken from the southwest end of the Location. Photo shows topsoil stockpiles. Stockpile missing required signage. Photos also show BMPs to stabilize, and protect the topsoil stockpile from wind or water erosion are missing or insufficient. Stockpile constructed larger than advisable, and with steep slopes.



**COLORADO**  
Oil & Gas Conservation  
Commission  
Department of Natural Resources



## Inspection Photos

Operator Name: TEP ROCKY MOUNTAIN LLC - 96850

Location #482958



**Photo 4:** See comments under photo 3.



## Inspection Photos

Operator Name: TEP ROCKY MOUNTAIN LLC - 96850

Location #482958



**Photo 5:** See comments under photo 3.



**COLORADO**  
Oil & Gas Conservation  
Commission  
Department of Natural Resources



## Inspection Photos

Operator Name: TEP ROCKY MOUNTAIN LLC - 96850

Location #482958



**Photo 6:** Photos provide example of 2 out of 3 sediment traps constructed on the Location. BMPs appear to have been constructed per good engineering requirements, and in proper functioning condition at time of inspection.



## Inspection Photos

Operator Name: TEP ROCKY MOUNTAIN LLC - 96850

Location #482958



**Photo 7:** Photo shows construction of the cuttings trench “in process”.



**COLORADO**  
Oil & Gas Conservation  
Commission  
Department of Natural Resources



## Inspection Photos

Operator Name: TEP ROCKY MOUNTAIN LLC - 96850

Location #482958



**Photo 8:** Photo taken from the north end of the Location, facing northeast. Photo shows the “Trench Backfill” location per construction figures. Trench construction in process at time of inspection. Currently, erosion logs at the toe of the slopes are the only stormwater BMP in place to manage runoff.



## Inspection Photos

Operator Name: TEP ROCKY MOUNTAIN LLC - 96850

Location #482958



November 21, 2022

**Photo 9:** Continued from photo 8. Photo shows erosion logs at the toe of the slopes are the only stormwater BMP in place to manage runoff.



**COLORADO**  
Oil & Gas Conservation  
Commission  
Department of Natural Resources



## Inspection Photos

Operator Name: TEP ROCKY MOUNTAIN LLC - 96850

Location #482958



**Photo 10:** Photos example showing fill slopes of the Location. SWMP states hydro-mulch will be applied at the cut and fill slopes of the Location. Photo shows BMP has not yet been installed. Due to the combination of rocky and fine material composing the slopes, as well as the steep grade, hydro-mulch may be inadequate per the sites conditions.