

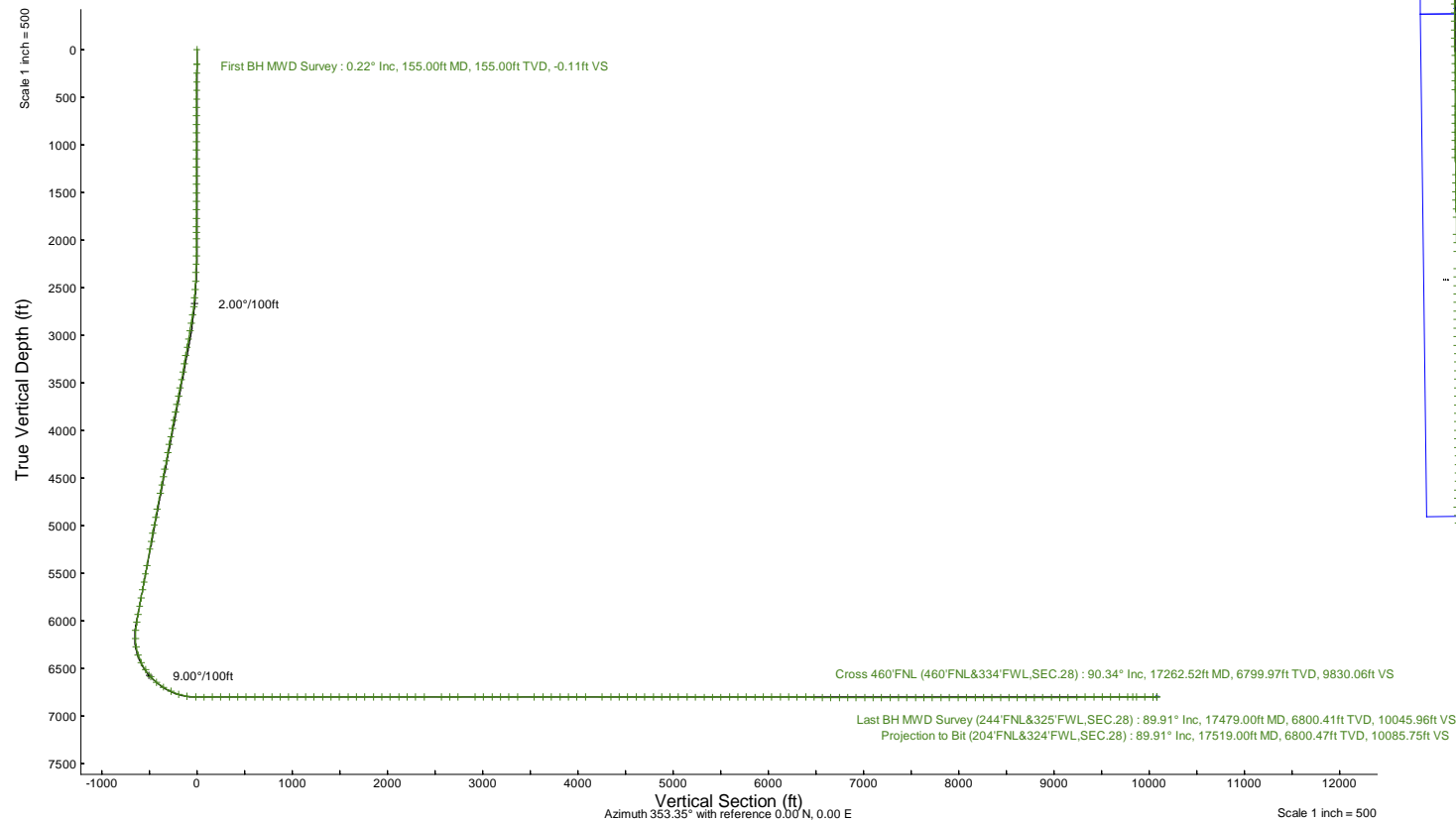
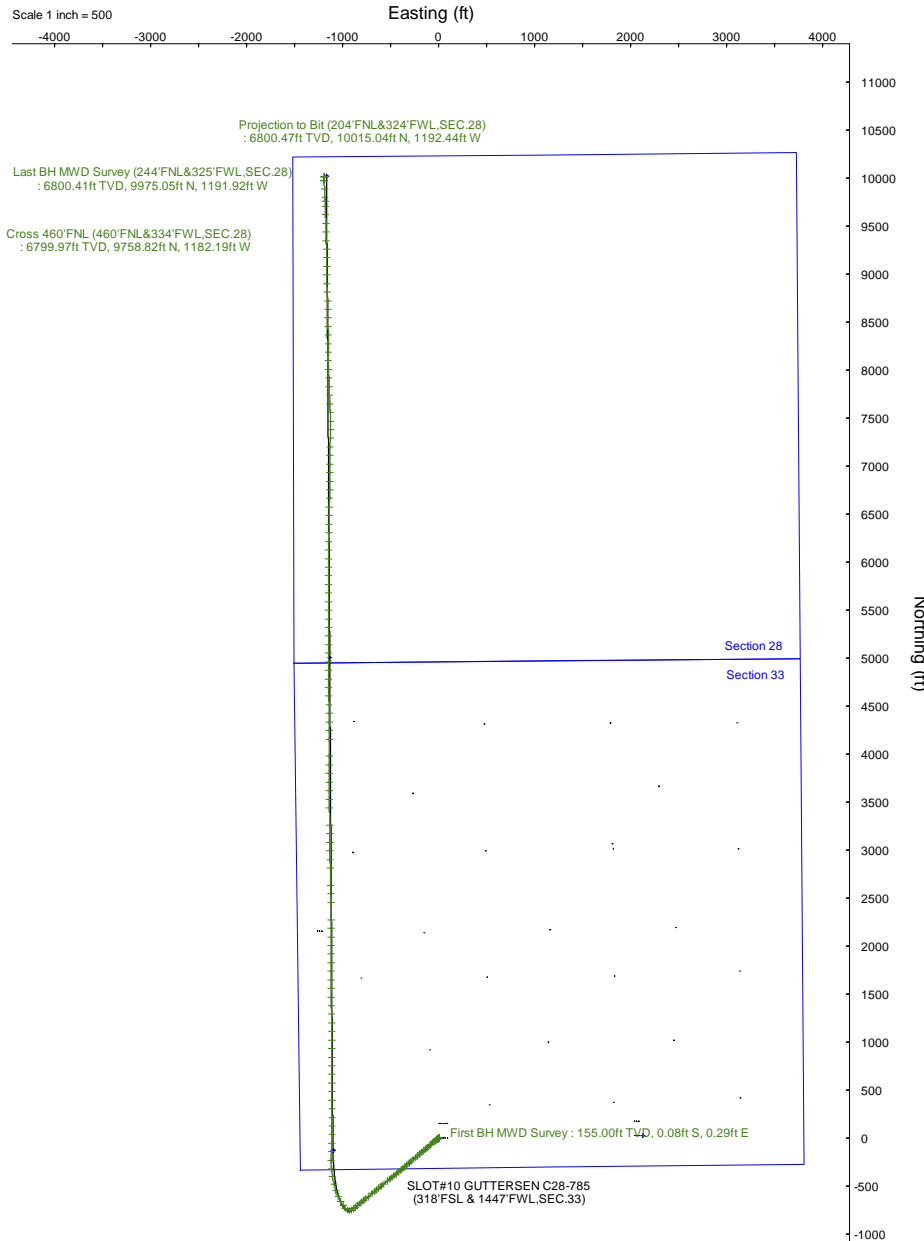
NOBLE ENERGY, INC

Location: COLORADO Slot: SLOT#10 GUTTERSEN C28-785 (318'FSL & 1447'FWL, SEC.33)
 Field: WELD COUNTY (NOBLE NAD 83 GRID) Well: Gutteresen C28-785
 Facility: SEC.33-T04N-R64W Wellbore: Gutteresen C28-785 PWB

Plot reference wellpath is Gutteresen C28-785 (REV-C.0) PWP	Grid System: NAD83 / Lambert Colorado SP, Northern Zone (501), US feet
True vertical depths are referenced to PD 460 (4724'GL+21'KB@4745'RKB) (RKB)	North Reference: Grid north
Reference wellpath measured depths are referenced to PD 460 (4724'GL+21'KB@4745'RKB) (RKB)	Scale: True distance
PD 460 (4724'GL+21'KB@4745'RKB) (RKB) to Mean Sea Level: 4745 feet	Coordinates are in feet referenced to Slot
Mean Sea Level to Mud line (At Slot: SLOT#10 GUTTERSEN C28-785 (318'FSL & 1447'FWL, SEC.33)): 0 feet	Depths are in feet
Offset wellpath MDs are referenced to each path's default MD datum	Created by: gualaner on 2022-08-26; Database: WA_Denver

Location Information

Facility Name	Grid East (US ft)	Grid North (US ft)	Latitude	Longitude		
SEC.33-T04N-R64W	3264404.630	1339924.700	40°15'45.4140"N	104°33'9.1764"W		
Slot	Local N (ft)	Local E (ft)	Grid East (US ft)	Grid North (US ft)	Latitude	Longitude
SLOT#10 GUTTERSEN C28-785 (318'FSL & 1447'FWL, SEC.33)	-24.48	-2129.58	3262275.148	1339900.220	40°15'45.3960"N	104°33'36.6480"W
PD 460 (4724'GL+21'KB@4745'RKB) (RKB) to Mud line (At Slot: SLOT#10 GUTTERSEN C28-785 (318'FSL & 1447'FWL, SEC.33))					4745ft	
Mean Sea Level to Mud line (At Slot: SLOT#10 GUTTERSEN C28-785 (318'FSL & 1447'FWL, SEC.33))					0ft	
PD 460 (4724'GL+21'KB@4745'RKB) (RKB) to Mean Sea Level					4745ft	





Actual Wellpath Report

Guttersen C28-785 AWP

Page 1 of 8



REFERENCE WELLPATH IDENTIFICATION

Operator	NOBLE ENERGY, INC	Well	Guttersen C28-785
Field	WELD COUNTY (NOBLE NAD 83 GRID)	API	05-123-48935
Facility	SEC.33-T04N-R64W	Wellbore	Guttersen C28-785 AWB
Slot	SLOT#10 GUTTERSEN C28-785 (318'FSL & 1447'FWL,SEC.33)		

REPORT SETUP INFORMATION

Projection System	NAD83 / Lambert Colorado SP, Northern Zone (501), US feet	Software System	WellArchitect® 6.0
North Reference	Grid	User	Guenaler
Scale	0.999957	Report Generated	8/26/2022 at 4:05:33 PM
Convergence at slot	0.61° East	Database	WA_Denver

WELLPATH LOCATION

	Local coordinates		Grid coordinates		Geographic coordinates	
	North[ft]	East[ft]	Easting[US ft]	Northing[US ft]	Latitude	Longitude
Slot Location	-24.48	-2129.58	3262275.15	1339900.22	40°15'45.3960"N	104°33'36.6480"W
Facility Reference Pt			3264404.63	1339924.70	40°15'45.4140"N	104°33'9.1764"W
Field Reference Pt			3000000.00	4454105.15	48°46'34.3150"N	105°30'0.0000"W

WELLPATH DATUM

Calculation method	Minimum curvature	PD 460 (4724'GL+21'KB@4745'RKB) (RKB) to Facility Vertical Datum	4745.00ft
Horizontal Reference Pt	Slot	PD 460 (4724'GL+21'KB@4745'RKB) (RKB) to Mean Sea Level	4745.00ft
Vertical Reference Pt	PD 460 (4724'GL+21'KB@4745'RKB) (RKB)	PD 460 (4724'GL+21'KB@4745'RKB) (RKB) to Mud Line at Slot (SLOT#10 GUTTERSEN C28-785 (318'FSL & 1447'FWL,SEC.33))	4745.00ft
MD Reference Pt	PD 460 (4724'GL+21'KB@4745'RKB) (RKB)	Section Origin	N 0.00, E 0.00 ft
Field Vertical Reference	Mean Sea Level	Section Azimuth	353.35°



Actual Wellpath Report

Guttersen C28-785 AWP

Page 2 of 8



REFERENCE WELLPATH IDENTIFICATION

Operator	NOBLE ENERGY, INC	Well	Guttersen C28-785
Field	WELD COUNTY (NOBLE NAD 83 GRID)	API	05-123-48935
Facility	SEC.33-T04N-R64W	Wellbore	Guttersen C28-785 AWB
Slot	SLOT#10 GUTTERSEN C28-785 (318'FSL & 1447'FWL,SEC.33)		

WELLPATH DATA (192 stations)

MD [ft]	Inclination [°]	Azimuth [°]	TVD [ft]	Vert Sect [ft]	North [ft]	East [ft]	Latitude	Longitude	DLS [°/100ft]	Comments
0.00	0.000	105.010	0.00	0.00	0.00	0.00	40°15'45.3960"N	104°33'36.6480"W	0.00	
155.00	0.220	105.010	155.00	-0.11	-0.08	0.29	40°15'45.3952"N	104°33'36.6443"W	0.14	First BH MWD Survey
248.00	0.260	114.640	248.00	-0.29	-0.21	0.65	40°15'45.3938"N	104°33'36.6396"W	0.06	
338.00	0.150	122.040	338.00	-0.47	-0.36	0.94	40°15'45.3924"N	104°33'36.6360"W	0.13	
428.00	0.290	130.950	428.00	-0.71	-0.57	1.21	40°15'45.3902"N	104°33'36.6325"W	0.16	
517.00	0.250	117.780	517.00	-0.98	-0.81	1.55	40°15'45.3878"N	104°33'36.6281"W	0.08	
607.00	0.180	154.280	607.00	-1.23	-1.03	1.79	40°15'45.3857"N	104°33'36.6251"W	0.17	
696.00	0.300	129.160	696.00	-1.53	-1.30	2.03	40°15'45.3829"N	104°33'36.6220"W	0.18	
786.00	0.260	138.310	785.99	-1.86	-1.60	2.35	40°15'45.3799"N	104°33'36.6180"W	0.07	
876.00	0.230	153.180	875.99	-2.20	-1.92	2.56	40°15'45.3768"N	104°33'36.6152"W	0.08	
965.00	0.290	174.720	964.99	-2.59	-2.30	2.66	40°15'45.3730"N	104°33'36.6139"W	0.13	
1055.00	0.310	173.560	1054.99	-3.06	-2.77	2.71	40°15'45.3684"N	104°33'36.6134"W	0.02	
1144.00	0.370	219.370	1143.99	-3.50	-3.23	2.56	40°15'45.3638"N	104°33'36.6155"W	0.30	
1234.00	0.390	232.750	1233.99	-3.86	-3.64	2.13	40°15'45.3598"N	104°33'36.6210"W	0.10	
1323.00	0.460	242.200	1322.99	-4.14	-3.99	1.57	40°15'45.3564"N	104°33'36.6283"W	0.11	
1413.00	0.460	259.750	1412.98	-4.30	-4.22	0.90	40°15'45.3542"N	104°33'36.6370"W	0.16	
1503.00	0.620	274.660	1502.98	-4.23	-4.25	0.06	40°15'45.3540"N	104°33'36.6479"W	0.24	
1592.00	0.610	266.050	1591.97	-4.11	-4.24	-0.90	40°15'45.3542"N	104°33'36.6601"W	0.10	
1681.00	0.840	263.150	1680.97	-4.09	-4.35	-2.02	40°15'45.3532"N	104°33'36.6746"W	0.26	
1771.00	1.250	255.820	1770.95	-4.22	-4.67	-3.62	40°15'45.3502"N	104°33'36.6954"W	0.48	
1860.00	1.540	251.070	1859.92	-4.60	-5.30	-5.70	40°15'45.3443"N	104°33'36.7222"W	0.35	
1917.00	1.660	250.550	1916.90	-4.95	-5.82	-7.20	40°15'45.3393"N	104°33'36.7416"W	0.21	
1984.00	0.750	257.540	1983.89	-5.21	-6.24	-8.54	40°15'45.3353"N	104°33'36.7590"W	1.37	
2073.00	0.060	40.430	2072.88	-5.23	-6.33	-9.08	40°15'45.3344"N	104°33'36.7660"W	0.90	
2163.00	0.130	189.840	2162.88	-5.30	-6.39	-9.07	40°15'45.3338"N	104°33'36.7658"W	0.20	
2252.00	1.840	231.590	2251.87	-6.15	-7.38	-10.20	40°15'45.3242"N	104°33'36.7806"W	1.96	
2342.00	3.710	230.480	2341.76	-8.49	-10.13	-13.58	40°15'45.2973"N	104°33'36.8246"W	2.08	
2432.00	5.220	230.050	2431.48	-12.32	-14.61	-18.97	40°15'45.2536"N	104°33'36.8947"W	1.68	
2521.00	6.380	230.950	2520.03	-17.19	-20.33	-25.91	40°15'45.1979"N	104°33'36.9850"W	1.31	
2610.00	8.440	230.910	2608.28	-23.34	-27.56	-34.82	40°15'45.1273"N	104°33'37.1009"W	2.31	
2700.00	11.600	230.410	2696.89	-31.81	-37.50	-46.93	40°15'45.0304"N	104°33'37.2584"W	3.51	
2790.00	14.680	230.140	2784.53	-42.98	-50.57	-62.66	40°15'44.9028"N	104°33'37.4631"W	3.42	
2879.00	18.010	229.670	2869.92	-56.79	-66.71	-81.81	40°15'44.7454"N	104°33'37.7123"W	3.74	
2969.00	17.070	229.720	2955.73	-71.82	-84.26	-102.49	40°15'44.5742"N	104°33'37.9815"W	1.04	
3058.00	16.850	228.890	3040.86	-86.36	-101.18	-122.17	40°15'44.4090"N	104°33'38.2377"W	0.37	
3148.00	16.950	228.820	3126.98	-101.17	-118.40	-141.88	40°15'44.2409"N	104°33'38.4942"W	0.11	
3238.00	15.890	229.000	3213.30	-115.56	-135.12	-161.05	40°15'44.0777"N	104°33'38.7438"W	1.18	
3327.00	16.670	229.290	3298.73	-129.59	-151.44	-179.92	40°15'43.9184"N	104°33'38.9894"W	0.88	
3417.00	17.870	229.050	3384.68	-144.60	-168.91	-200.14	40°15'43.7479"N	104°33'39.2525"W	1.34	
3506.00	18.650	229.750	3469.19	-160.17	-187.05	-221.31	40°15'43.5708"N	104°33'39.5281"W	0.91	
3596.00	18.420	229.140	3554.52	-176.13	-205.65	-243.05	40°15'43.3893"N	104°33'39.8111"W	0.33	
3685.00	18.720	228.830	3638.89	-192.13	-224.25	-264.43	40°15'43.2078"N	104°33'40.0894"W	0.35	
3775.00	18.850	229.230	3724.10	-208.47	-243.26	-286.32	40°15'43.0223"N	104°33'40.3743"W	0.20	
3865.00	18.860	229.430	3809.27	-224.74	-262.21	-308.38	40°15'42.8373"N	104°33'40.6614"W	0.07	
3954.00	18.850	229.470	3893.49	-240.78	-280.91	-330.23	40°15'42.6548"N	104°33'40.9459"W	0.02	

REFERENCE WELLPATH IDENTIFICATION			
Operator	NOBLE ENERGY, INC	Well	Guttersen C28-785
Field	WELD COUNTY (NOBLE NAD 83 GRID)	API	05-123-48935
Facility	SEC.33-T04N-R64W	Wellbore	Guttersen C28-785 AWB
Slot	SLOT#10 GUTTERSEN C28-785 (318'FSL & 1447'FWL,SEC.33)		

WELLPATH DATA (192 stations)										
MD [ft]	Inclination [°]	Azimuth [°]	TVD [ft]	Vert Sect [ft]	North [ft]	East [ft]	Latitude	Longitude	DLS [°/100ft]	Comments
4044.00	18.790	229.800	3978.68	-256.90	-299.71	-352.35	40°15'42.4713"N	104°33'41.2338"W	0.14	
4134.00	18.790	229.950	4063.88	-272.89	-318.40	-374.52	40°15'42.2890"N	104°33'41.5222"W	0.05	
4223.00	18.780	229.770	4148.14	-288.70	-336.87	-396.43	40°15'42.1088"N	104°33'41.8073"W	0.07	
4313.00	18.720	230.970	4233.37	-304.45	-355.32	-418.71	40°15'41.9288"N	104°33'42.0972"W	0.43	
4403.00	18.780	230.500	4318.59	-320.05	-373.63	-441.11	40°15'41.7502"N	104°33'42.3886"W	0.18	
4492.00	19.320	230.600	4402.72	-335.78	-392.09	-463.54	40°15'41.5701"N	104°33'42.6804"W	0.61	
4582.00	19.250	230.770	4487.67	-351.83	-410.92	-486.54	40°15'41.3865"N	104°33'42.9796"W	0.10	
4671.00	19.250	231.420	4571.69	-367.49	-429.35	-509.37	40°15'41.2067"N	104°33'43.2767"W	0.24	
4761.00	19.150	230.920	4656.68	-383.25	-447.91	-532.43	40°15'41.0258"N	104°33'43.5766"W	0.21	
4940.00	19.160	230.990	4825.77	-414.72	-484.91	-578.04	40°15'40.6650"N	104°33'44.1700"W	0.01	
5030.00	19.460	230.870	4910.71	-430.67	-503.66	-601.15	40°15'40.4820"N	104°33'44.4706"W	0.34	
5119.00	19.590	230.850	4994.59	-446.65	-522.44	-624.22	40°15'40.2989"N	104°33'44.7707"W	0.15	
5209.00	18.110	230.710	5079.76	-462.30	-540.82	-646.75	40°15'40.1196"N	104°33'45.0638"W	1.65	
5299.00	19.150	230.700	5165.05	-477.81	-559.03	-669.00	40°15'39.9420"N	104°33'45.3533"W	1.16	
5388.00	18.990	230.850	5249.16	-493.47	-577.42	-691.52	40°15'39.7626"N	104°33'45.6463"W	0.19	
5567.00	18.320	230.540	5418.76	-524.36	-613.69	-735.83	40°15'39.4089"N	104°33'46.2227"W	0.38	
5657.00	17.670	230.810	5504.35	-539.37	-631.31	-757.34	40°15'39.2370"N	104°33'46.5025"W	0.73	
5747.00	18.120	230.730	5590.00	-554.27	-648.80	-778.76	40°15'39.0665"N	104°33'46.7812"W	0.50	
5836.00	18.570	230.540	5674.48	-569.41	-666.57	-800.41	40°15'38.8932"N	104°33'47.0629"W	0.51	
5926.00	18.680	230.630	5759.76	-584.96	-684.82	-822.62	40°15'38.7151"N	104°33'47.3518"W	0.13	
6015.00	18.610	230.850	5844.09	-600.30	-702.82	-844.65	40°15'38.5395"N	104°33'47.6385"W	0.11	
6105.00	17.710	230.980	5929.61	-615.34	-720.51	-866.42	40°15'38.3670"N	104°33'47.9217"W	1.00	
6194.00	16.860	230.500	6014.59	-629.59	-737.24	-886.90	40°15'38.2038"N	104°33'48.1881"W	0.97	
6284.00	15.340	237.900	6101.06	-641.79	-751.87	-907.06	40°15'38.0614"N	104°33'48.4501"W	2.83	
6373.00	14.390	270.210	6187.23	-645.53	-758.10	-928.13	40°15'38.0020"N	104°33'48.7227"W	9.26	
6463.00	16.070	302.910	6274.23	-636.25	-751.27	-949.81	40°15'38.0717"N	104°33'49.0014"W	9.59	
6552.00	21.720	318.630	6358.45	-614.84	-732.20	-971.06	40°15'38.2624"N	104°33'49.2730"W	8.49	
6641.00	28.490	325.660	6439.01	-582.46	-702.27	-993.95	40°15'38.5606"N	104°33'49.5641"W	8.30	
6731.00	36.320	328.670	6514.94	-539.16	-661.71	-1019.96	40°15'38.9640"N	104°33'49.8941"W	8.88	
6821.00	43.040	335.580	6584.20	-485.61	-610.90	-1046.56	40°15'39.4689"N	104°33'50.2302"W	8.92	
6910.00	51.170	341.980	6644.77	-422.56	-550.14	-1069.90	40°15'40.0717"N	104°33'50.5229"W	10.54	
7000.00	58.920	346.660	6696.31	-349.78	-479.17	-1089.67	40°15'40.7751"N	104°33'50.7683"W	9.60	
7089.00	64.200	351.290	6738.70	-271.80	-402.40	-1104.55	40°15'41.5352"N	104°33'50.9497"W	7.49	
7179.00	73.490	353.920	6771.15	-187.97	-319.25	-1115.28	40°15'42.3579"N	104°33'51.0768"W	10.67	
7268.00	79.760	1.230	6791.75	-101.74	-232.85	-1118.86	40°15'43.2121"N	104°33'51.1113"W	10.65	
7358.00	87.750	2.490	6801.53	-13.33	-143.51	-1115.96	40°15'44.0946"N	104°33'51.0617"W	8.99	
7447.00	91.820	1.840	6801.87	74.60	-54.59	-1112.59	40°15'44.9729"N	104°33'51.0062"W	4.63	
7537.00	89.910	0.830	6800.51	163.71	35.37	-1110.50	40°15'45.8616"N	104°33'50.9669"W	2.40	
7626.00	89.880	359.890	6800.67	252.05	124.37	-1109.94	40°15'46.7409"N	104°33'50.9476"W	1.06	
7716.00	90.220	359.720	6800.59	341.48	214.37	-1110.25	40°15'47.6303"N	104°33'50.9393"W	0.42	
7806.00	90.310	359.790	6800.18	430.91	304.37	-1110.63	40°15'48.5196"N	104°33'50.9320"W	0.13	
7895.00	90.090	359.820	6799.87	519.35	393.36	-1110.93	40°15'49.3991"N	104°33'50.9238"W	0.25	
7985.00	90.060	359.640	6799.75	608.79	483.36	-1111.36	40°15'50.2884"N	104°33'50.9170"W	0.20	
8074.00	90.000	359.670	6799.70	697.25	572.36	-1111.89	40°15'51.1679"N	104°33'50.9118"W	0.08	
8164.00	90.060	359.800	6799.66	786.69	662.36	-1112.31	40°15'52.0572"N	104°33'50.9049"W	0.16	

REFERENCE WELLPATH IDENTIFICATION

Operator	NOBLE ENERGY, INC	Well	Guttersen C28-785
Field	WELD COUNTY (NOBLE NAD 83 GRID)	API	05-123-48935
Facility	SEC.33-T04N-R64W	Wellbore	Guttersen C28-785 AWB
Slot	SLOT#10 GUTTERSEN C28-785 (318'FSL & 1447'FWL,SEC.33)		

WELLPATH DATA (192 stations)

MD [ft]	Inclination [°]	Azimuth [°]	TVD [ft]	Vert Sect [ft]	North [ft]	East [ft]	Latitude	Longitude	DLS ["/100ft]	Comments
8254.00	89.880	359.520	6799.70	876.15	752.36	-1112.84	40°15'52.9466"N	104°33'50.8996"W	0.37	
8343.00	90.000	359.860	6799.80	964.61	841.36	-1113.32	40°15'53.8261"N	104°33'50.8936"W	0.41	
8433.00	90.280	359.790	6799.58	1054.03	931.36	-1113.60	40°15'54.7154"N	104°33'50.8849"W	0.32	
8522.00	90.030	359.480	6799.34	1142.50	1020.35	-1114.17	40°15'55.5949"N	104°33'50.8801"W	0.45	
8612.00	89.940	359.650	6799.36	1231.97	1110.35	-1114.85	40°15'56.4842"N	104°33'50.8767"W	0.21	
8702.00	89.780	359.540	6799.58	1321.43	1200.35	-1115.49	40°15'57.3736"N	104°33'50.8727"W	0.22	
8791.00	89.940	359.640	6799.80	1409.91	1289.35	-1116.12	40°15'58.2531"N	104°33'50.8687"W	0.21	
8880.00	89.970	359.430	6799.87	1498.39	1378.34	-1116.85	40°15'59.1326"N	104°33'50.8660"W	0.24	
8970.00	89.940	359.650	6799.94	1587.86	1468.34	-1117.57	40°16'0.0219"N	104°33'50.8630"W	0.25	
9059.00	89.970	359.750	6800.01	1676.32	1557.34	-1118.03	40°16'0.9014"N	104°33'50.8569"W	0.12	
9149.00	89.880	359.550	6800.12	1765.77	1647.34	-1118.58	40°16'1.7908"N	104°33'50.8518"W	0.24	
9238.00	89.940	359.890	6800.26	1854.22	1736.34	-1119.02	40°16'2.6702"N	104°33'50.8452"W	0.39	
9328.00	89.970	359.890	6800.33	1943.64	1826.34	-1119.19	40°16'3.5596"N	104°33'50.8352"W	0.03	
9417.00	89.970	359.870	6800.38	2032.06	1915.34	-1119.38	40°16'4.4390"N	104°33'50.8255"W	0.02	
9507.00	89.780	359.730	6800.58	2121.49	2005.33	-1119.69	40°16'5.3284"N	104°33'50.8173"W	0.26	
9596.00	89.940	359.750	6800.80	2209.94	2094.33	-1120.10	40°16'6.2078"N	104°33'50.8104"W	0.18	
9686.00	89.910	359.700	6800.91	2299.38	2184.33	-1120.53	40°16'7.0972"N	104°33'50.8037"W	0.06	
9776.00	90.580	0.640	6800.53	2388.74	2274.33	-1120.26	40°16'7.9864"N	104°33'50.7880"W	1.28	
9955.00	89.940	358.640	6799.72	2566.65	2453.31	-1121.39	40°16'9.7552"N	104°33'50.7782"W	1.17	
10044.00	89.970	358.960	6799.79	2655.25	2542.29	-1123.25	40°16'10.6346"N	104°33'50.7901"W	0.36	
10134.00	89.750	358.920	6800.01	2744.82	2632.28	-1124.91	40°16'11.5239"N	104°33'50.7993"W	0.25	
10313.00	89.940	358.780	6800.49	2923.00	2811.24	-1128.51	40°16'13.2927"N	104°33'50.8213"W	0.13	
10402.00	89.940	358.760	6800.58	3011.60	2900.22	-1130.42	40°16'14.1721"N	104°33'50.8338"W	0.02	
10491.00	89.970	358.810	6800.65	3100.20	2989.20	-1132.30	40°16'15.0516"N	104°33'50.8461"W	0.07	
10581.00	90.060	359.090	6800.63	3189.77	3079.19	-1133.95	40°16'15.9409"N	104°33'50.8551"W	0.33	
10671.00	89.910	359.540	6800.65	3279.28	3169.18	-1135.03	40°16'16.8303"N	104°33'50.8567"W	0.53	
10760.00	90.060	0.080	6800.68	3367.72	3258.18	-1135.32	40°16'17.7097"N	104°33'50.8484"W	0.63	
10939.00	90.250	358.190	6800.19	3545.80	3437.15	-1138.03	40°16'19.4785"N	104°33'50.8589"W	1.06	
11029.00	89.970	0.070	6800.02	3635.34	3527.13	-1139.39	40°16'20.3678"N	104°33'50.8643"W	2.11	
11119.00	89.910	359.880	6800.11	3724.74	3617.13	-1139.43	40°16'21.2571"N	104°33'50.8525"W	0.22	
11208.00	90.060	359.750	6800.14	3813.17	3706.13	-1139.72	40°16'22.1366"N	104°33'50.8441"W	0.22	
11298.00	90.000	359.910	6800.09	3902.60	3796.13	-1139.99	40°16'23.0259"N	104°33'50.8353"W	0.19	
11387.00	89.940	359.790	6800.14	3991.02	3885.13	-1140.22	40°16'23.9054"N	104°33'50.8262"W	0.15	
11477.00	90.000	359.660	6800.18	4080.47	3975.13	-1140.65	40°16'24.7947"N	104°33'50.8195"W	0.16	
11656.00	89.940	359.850	6800.28	4258.35	4154.13	-1141.42	40°16'26.5635"N	104°33'50.8050"W	0.11	
11746.00	89.940	359.810	6800.37	4347.78	4244.13	-1141.68	40°16'27.4529"N	104°33'50.7962"W	0.04	
11836.00	89.850	359.860	6800.54	4437.20	4334.13	-1141.94	40°16'28.3422"N	104°33'50.7873"W	0.11	
11925.00	89.910	359.870	6800.72	4525.62	4423.13	-1142.15	40°16'29.2217"N	104°33'50.7779"W	0.07	
12015.00	89.880	359.550	6800.89	4615.07	4513.13	-1142.61	40°16'30.1110"N	104°33'50.7715"W	0.36	
12104.00	89.970	358.380	6801.00	4703.64	4602.11	-1144.22	40°16'30.9905"N	104°33'50.7801"W	1.32	
12194.00	90.030	359.720	6801.00	4793.20	4692.10	-1145.71	40°16'31.8798"N	104°33'50.7871"W	1.49	
12283.00	89.940	0.000	6801.03	4881.62	4781.10	-1145.93	40°16'32.7593"N	104°33'50.7778"W	0.33	
12373.00	89.850	0.050	6801.19	4971.01	4871.10	-1145.89	40°16'33.6486"N	104°33'50.7650"W	0.11	
12462.00	89.820	359.810	6801.45	5059.43	4960.10	-1146.00	40°16'34.5280"N	104°33'50.7543"W	0.27	
12552.00	89.850	359.720	6801.71	5148.86	5050.09	-1146.36	40°16'35.4174"N	104°33'50.7468"W	0.11	

REFERENCE WELLPATH IDENTIFICATION

Operator	NOBLE ENERGY, INC	Well	Guttersen C28-785
Field	WELD COUNTY (NOBLE NAD 83 GRID)	API	05-123-48935
Facility	SEC.33-T04N-R64W	Wellbore	Guttersen C28-785 AWB
Slot	SLOT#10 GUTTERSEN C28-785 (318'FSL & 1447'FWL,SEC.33)		

WELLPATH DATA (192 stations)

MD [ft]	Inclination [°]	Azimuth [°]	TVD [ft]	Vert Sect [ft]	North [ft]	East [ft]	Latitude	Longitude	DLS ["/100ft]	Comments
12641.00	89.850	359.870	6801.94	5237.30	5139.09	-1146.68	40°16'36.2968"N	104°33'50.7388"W	0.17	
12731.00	90.060	359.760	6802.01	5326.73	5229.09	-1146.97	40°16'37.1862"N	104°33'50.7303"W	0.26	
12820.00	89.850	359.420	6802.08	5415.20	5318.09	-1147.61	40°16'38.0656"N	104°33'50.7264"W	0.45	
12910.00	90.120	0.090	6802.11	5504.64	5408.09	-1148.00	40°16'38.9550"N	104°33'50.7191"W	0.80	
13000.00	90.520	1.180	6801.60	5593.91	5498.08	-1147.00	40°16'39.8441"N	104°33'50.6940"W	1.29	
13089.00	90.370	359.150	6800.91	5682.27	5587.07	-1146.74	40°16'40.7234"N	104°33'50.6786"W	2.29	
13179.00	89.260	0.120	6801.20	5771.73	5677.07	-1147.31	40°16'41.6128"N	104°33'50.6737"W	1.64	
13268.00	89.940	0.020	6801.82	5860.11	5766.07	-1147.21	40°16'42.4922"N	104°33'50.6602"W	0.77	
13358.00	91.420	1.600	6800.75	5949.34	5856.05	-1145.93	40°16'43.3811"N	104°33'50.6315"W	2.41	
13447.00	90.310	358.750	6799.41	6037.69	5945.02	-1145.66	40°16'44.2603"N	104°33'50.6159"W	3.44	
13537.00	89.110	359.990	6799.87	6127.19	6035.01	-1146.65	40°16'45.1497"N	104°33'50.6164"W	1.92	
13626.00	89.140	1.010	6801.23	6215.49	6124.00	-1145.88	40°16'46.0289"N	104°33'50.5943"W	1.15	
13716.00	90.030	2.340	6801.88	6304.53	6213.96	-1143.25	40°16'46.9175"N	104°33'50.5481"W	1.78	
13806.00	90.150	359.200	6801.74	6393.77	6303.94	-1142.04	40°16'47.8065"N	104°33'50.5202"W	3.49	
13895.00	88.370	0.460	6802.89	6482.19	6392.92	-1142.30	40°16'48.6858"N	104°33'50.5115"W	2.45	
13985.00	87.810	1.100	6805.89	6571.38	6482.86	-1141.08	40°16'49.5744"N	104°33'50.4835"W	0.94	
14074.00	89.850	1.360	6807.70	6659.52	6571.82	-1139.17	40°16'50.4532"N	104°33'50.4467"W	2.31	
14164.00	91.260	2.540	6806.83	6748.50	6661.76	-1136.10	40°16'51.3416"N	104°33'50.3950"W	2.04	
14253.00	90.060	0.250	6805.81	6836.61	6750.72	-1133.94	40°16'52.2204"N	104°33'50.3549"W	2.90	
14343.00	89.230	0.600	6806.36	6925.92	6840.71	-1133.27	40°16'53.1096"N	104°33'50.3340"W	1.00	
14433.00	90.400	1.270	6806.65	7015.13	6930.70	-1131.80	40°16'53.9986"N	104°33'50.3028"W	1.50	
14522.00	89.880	359.640	6806.44	7103.45	7019.69	-1131.09	40°16'54.8779"N	104°33'50.2816"W	1.92	
14612.00	90.590	0.500	6806.07	7192.82	7109.69	-1130.98	40°16'55.7672"N	104°33'50.2679"W	1.24	
14701.00	88.800	0.350	6806.54	7281.14	7198.68	-1130.32	40°16'56.6465"N	104°33'50.2473"W	2.02	
14791.00	90.120	1.830	6807.39	7370.31	7288.66	-1128.61	40°16'57.5354"N	104°33'50.2129"W	2.20	
14881.00	90.890	0.620	6806.60	7459.46	7378.63	-1126.69	40°16'58.4243"N	104°33'50.1759"W	1.59	
14970.00	90.830	359.370	6805.26	7547.85	7467.62	-1126.70	40°16'59.3036"N	104°33'50.1638"W	1.41	
15060.00	90.770	357.210	6804.00	7637.50	7557.57	-1129.38	40°17'0.1926"N	104°33'50.1862"W	2.40	
15149.00	88.680	357.500	6804.43	7726.28	7646.47	-1133.49	40°17'1.0715"N	104°33'50.2271"W	2.37	
15239.00	88.980	358.060	6806.27	7815.99	7736.38	-1136.97	40°17'1.9603"N	104°33'50.2598"W	0.71	
15329.00	90.710	358.880	6806.51	7905.63	7826.34	-1139.38	40°17'2.8495"N	104°33'50.2786"W	2.13	
15418.00	90.340	356.740	6805.70	7994.35	7915.27	-1142.78	40°17'3.7286"N	104°33'50.3104"W	2.44	
15508.00	89.600	356.910	6805.74	8084.18	8005.13	-1147.76	40°17'4.6171"N	104°33'50.3624"W	0.84	
15598.00	89.320	0.240	6806.59	8173.79	8095.09	-1150.00	40°17'5.5062"N	104°33'50.3791"W	3.71	
15687.00	90.060	0.030	6807.07	8262.17	8184.08	-1149.79	40°17'6.3856"N	104°33'50.3642"W	0.86	
15777.00	90.490	0.630	6806.64	8351.50	8274.08	-1149.27	40°17'7.2748"N	104°33'50.3453"W	0.82	
15866.00	90.770	359.750	6805.66	8439.86	8363.07	-1148.98	40°17'8.1541"N	104°33'50.3294"W	1.04	
15956.00	90.180	357.870	6804.92	8529.44	8453.05	-1150.85	40°17'9.0434"N	104°33'50.3412"W	2.19	
16045.00	89.820	359.330	6804.92	8618.07	8542.02	-1153.02	40°17'9.9227"N	104°33'50.3572"W	1.69	
16135.00	90.520	0.450	6804.65	8707.48	8632.01	-1153.19	40°17'10.8120"N	104°33'50.3471"W	1.47	
16224.00	90.590	357.370	6803.79	8796.05	8720.98	-1154.89	40°17'11.6913"N	104°33'50.3568"W	3.46	
16314.00	90.090	355.920	6803.25	8885.89	8810.82	-1160.15	40°17'12.5796"N	104°33'50.4126"W	1.70	
16403.00	89.480	357.240	6803.59	8974.75	8899.66	-1165.46	40°17'13.4580"N	104°33'50.4690"W	1.63	
16493.00	89.050	358.900	6804.74	9064.43	8989.60	-1168.49	40°17'14.3471"N	104°33'50.4958"W	1.91	
16582.00	90.550	1.170	6805.05	9152.82	9078.59	-1168.44	40°17'15.2264"N	104°33'50.4830"W	3.06	



Actual Wellpath Report

Guttersen C28-785 AWP

Page 6 of 8



REFERENCE WELLPATH IDENTIFICATION			
Operator	NOBLE ENERGY, INC	Well	Guttersen C28-785
Field	WELD COUNTY (NOBLE NAD 83 GRID)	API	05-123-48935
Facility	SEC.33-T04N-R64W	Wellbore	Guttersen C28-785 AWB
Slot	SLOT#10 GUTTERSEN C28-785 (318'FSL & 1447'FWL,SEC.33)		

WELLPATH DATA (192 stations) † = interpolated, ‡ = extrapolated station										
MD [ft]	Inclination [°]	Azimuth [°]	TVD [ft]	Vert Sect [ft]	North [ft]	East [ft]	Latitude	Longitude	DLS [°/100ft]	Comments
16672.00	91.630	0.370	6803.34	9242.05	9168.57	-1167.23	40°17'16.1153"N	104°33'50.4551"W	1.49	
16762.00	91.110	358.190	6801.19	9331.54	9258.53	-1168.36	40°17'17.0044"N	104°33'50.4575"W	2.49	
16851.00	89.780	357.400	6800.50	9420.26	9347.46	-1171.78	40°17'17.8835"N	104°33'50.4896"W	1.74	
16941.00	90.120	0.110	6800.58	9509.85	9437.43	-1173.74	40°17'18.7727"N	104°33'50.5025"W	3.03	
17031.00	90.370	358.320	6800.19	9599.38	9527.41	-1174.97	40°17'19.6620"N	104°33'50.5062"W	2.01	
17120.00	89.660	358.130	6800.17	9688.06	9616.37	-1177.73	40°17'20.5413"N	104°33'50.5296"W	0.83	
17210.00	90.250	358.210	6800.24	9777.74	9706.32	-1180.60	40°17'21.4305"N	104°33'50.5545"W	0.66	
17262.52†	90.338	358.321	6799.97	9830.06	9758.82	-1182.19	40°17'21.9493"N	104°33'50.5678"W	0.27	Cross 460'FNL (460'FNL&334'FWL,SEC.28)
17300.00	90.400	358.400	6799.73	9867.40	9796.28	-1183.26	40°17'22.3196"N	104°33'50.5766"W	0.27	
17389.00	89.410	355.630	6799.87	9956.21	9885.15	-1187.90	40°17'23.1983"N	104°33'50.6243"W	3.31	
17479.00	89.910	359.250	6800.41	10045.96	9975.05	-1191.92	40°17'24.0869"N	104°33'50.6639"W	4.06	Last BH MWD Survey (244'FNL&325'FWL,SEC.28)
17519.00‡	89.910	359.250	6800.47	10085.75	10015.04	-1192.44	40°17'24.4822"N	104°33'50.6652"W	0.00	Projection to Bit (204'FNL&324'FWL,SEC.28)

REFERENCE WELLPATH IDENTIFICATION			
Operator	NOBLE ENERGY, INC	Well	Guttersen C28-785
Field	WELD COUNTY (NOBLE NAD 83 GRID)	API	05-123-48935
Facility	SEC.33-T04N-R64W	Wellbore	Guttersen C28-785 AWB
Slot	SLOT#10 GUTTERSEN C28-785 (318'FSL & 1447'FWL,SEC.33)		

TARGETS								
Name	TVD [ft]	North [ft]	East [ft]	Grid East [US ft]	Grid North [US ft]	Latitude	Longitude	Shape
Guttersen C28-715 Section 28	-3.00	26.30	2129.28	3264404.33	1339926.52	40°15'45.4320"N	104°33'9.1800"W	polygon
2D Polygon: dimensions not calculated								
Guttersen C28-715 Section 33	-3.00	26.30	2129.28	3264404.33	1339926.52	40°15'45.4320"N	104°33'9.1800"W	polygon
2D Polygon: dimensions not calculated								
GUTTERSEN C28-785 BHL (200'FNL & 350'FWL,SEC.28)	6697.00	10017.38	-1167.72	3261107.48	1349917.15	40°17'24.5027"N	104°33'50.3459"W	point
Guttersen C28-785-IP1	6720.00	5002.79	-1132.14	3261143.06	1344902.78	40°16'34.9484"N	104°33'50.5698"W	point
GUTTERSEN C28-785 BHL 2 (200'FNL & 350'FWL,SEC.28)	6793.00	10017.38	-1167.72	3261107.48	1349917.15	40°17'24.5027"N	104°33'50.3459"W	point
GUTTERSEN C28-785 LP /PLAN 2 (200'FSL & 350'FWL,SEC.33)	6793.00	-130.44	-1095.72	3261179.48	1339769.79	40°15'44.2216"N	104°33'50.7989"W	point
GUTTERSEN C28-785 LP/TPZ for AC (200'FSL & 345'FWL,SEC.33)	6793.00	-130.44	-1100.72	3261174.48	1339769.79	40°15'44.2221"N	104°33'50.8634"W	point
GUTTERSEN C28-785 LP /PLAN (200'FSL & 350'FWL,SEC.33)	6799.00	-130.44	-1095.72	3261179.48	1339769.79	40°15'44.2216"N	104°33'50.7989"W	point
GUTTERSEN C28-785 Rev-2 LP/TPZ for AC (200'FSL & 345'FWL,SEC.33)	6802.00	-130.44	-1100.72	3261174.48	1339769.79	40°15'44.2221"N	104°33'50.8634"W	point
GUTTERSEN C28-785 Rev-3 BHL (200'FNL & 350'FWL,SEC.28)	6802.00	10017.38	-1167.72	3261107.48	1349917.15	40°17'24.5027"N	104°33'50.3459"W	point

WELLPATH COMPOSITION - Ref Wellbore: Guttersen C28-785 AWB Ref Wellpath: Guttersen C28-785 AWP					
Start MD [ft]	End MD [ft]	Positional Uncertainty Model	Log Name/Comment	Wellbore	Survey Date
0.00	1917.00	OWSG MWD rev2 (MS+IFR1)	13.5 Surface Hole - EVO <155'-1917'>	Guttersen C28-785 AWB	8/23/2022
1917.00	17519.00	OWSG MWD rev2 (MS+IFR1)	8.5" ATC Monobore <1984'-17479'>	Guttersen C28-785 AWB	8/23/2022

REFERENCE WELLPATH IDENTIFICATION			
Operator	NOBLE ENERGY, INC	Well	Guttersen C28-785
Field	WELD COUNTY (NOBLE NAD 83 GRID)	API	05-123-48935
Facility	SEC.33-T04N-R64W	Wellbore	Guttersen C28-785 AWB
Slot	SLOT#10 GUTTERSEN C28-785 (318'FSL & 1447'FWL,SEC.33)		

WELLPATH COMMENTS					
MD [ft]	Inclination [°]	Azimuth [°]	TVD [ft]	Comment	
155.00	0.220	105.010	155.00	First BH MWD Survey	
17262.52	90.338	358.321	6799.97	Cross 460'FNL (460'FNL&334'FWL,SEC.28)	
17479.00	89.910	359.250	6800.41	Last BH MWD Survey (244'FNL&325'FWL,SEC.28)	
17519.00	89.910	359.250	6800.47	Projection to Bit (204'FNL&324'FWL,SEC.28)	