



Chevron RBU

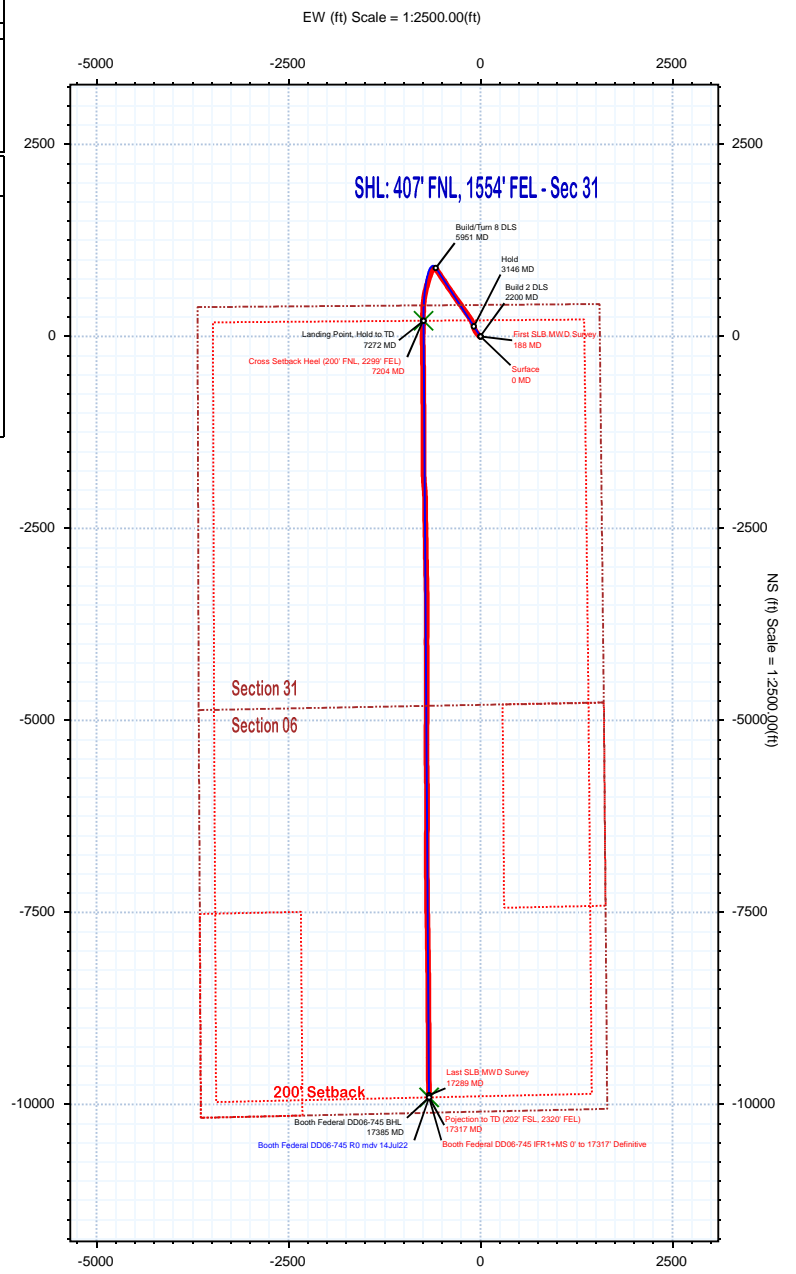
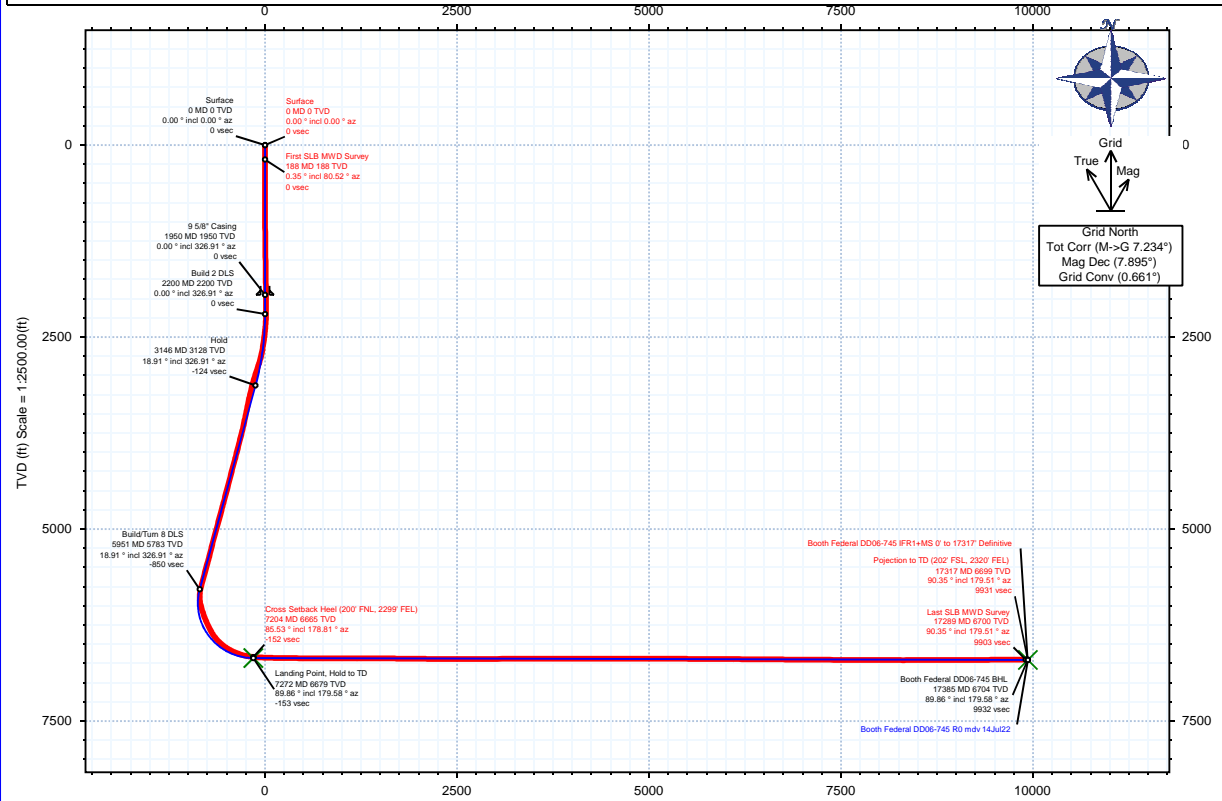


| | | | |
|-----------------------------------|--|---|---|
| Borehole: Original Hole | Well: Booth Federal DD06-745 | Field: CO, Weld County (NAD 83 NZ) - 2019 | Structure: Chevron RBU 31-04N-63W (CC31-02-A Pad) |
|-----------------------------------|--|---|---|

| | | | | | | | | | | | | | | | |
|--|--------|------|---------|-------------------------|----------------------------|------|----------------|---|----------------|-------------|------------|----------------------|--|----------|-----------------------------|
| Gravity & Magnetic Parameters | | | | Surface Location | | | | NAD83 Colorado State Plane, Northern Zone, US Feet | | | | Miscellaneous | | | |
| Model: | IFR1 | Dip: | 66.6° | Date: | 08-Sep-2022 | Lat: | N 40 16 29.82 | Northing: | 1344653.33ftUS | Grid Conv: | 0.6612° | Slot: | Booth Federal DD06-745 | TVD Ref: | KB = 29ft(4817ft above MSL) |
| MagDec: | 7.895° | FS: | 51795nT | Gravity FS: | 999.028mgn (9.80665 Based) | Lon: | W 104 28 35.87 | Easting: | 3285538.54ftUS | Scale Fact: | 0.99995694 | Plan: | Booth Federal DD06-745 IFR1+MS 0' to 17317' Definitive | | |

| Target Description | Surface Location | | Grid Coord | | Local Coord | |
|-----------------------------------|------------------|----------------|------------|------------|-------------|---------|
| | Latitude | Longitude | Northing | Easting | TVD | VSec |
| CC31-04-A Pad Fed Mins 2 | N 40 16 29.93 | W 104 29 9.02 | 1344634.73 | 3282968.77 | 4817.00 | 191.24 |
| CC31-04-A Pad Sec 31-06 | N 40 16 29.93 | W 104 29 9.02 | 1344634.73 | 3282968.77 | 4817.00 | 191.24 |
| CC31-04-A Pad Fed Mins 1 | N 40 16 29.93 | W 104 29 9.02 | 1344634.73 | 3282968.77 | 4817.00 | 191.24 |
| CC31-04-A Pad Sec 31-06 - 200' SB | N 40 16 29.93 | W 104 29 9.02 | 1344634.73 | 3282968.77 | 4817.00 | 191.24 |
| Booth Federal DD06-745 LP | N 40 16 31.91 | W 104 28 45.40 | 1344856.25 | 3284797.47 | 6679.00 | -152.67 |
| Booth Federal DD06-745 BHL | N 40 14 51.98 | W 104 28 45.95 | 1334744.57 | 3284871.20 | 6704.00 | 9931.65 |

| Critical Point | MD | INCL | AZIM | TVD | VSEC | N(+)/S(-) | E(+)/W(-) | DLS |
|--|----------|-------|--------|---------|---------|-----------|-----------|------|
| Surface | 0.00 | 0.00 | 0.00 | 0.00 | 0.00 | 0.00 | 0.00 | |
| First SLB MWD Survey | 188.00 | 0.35 | 80.52 | 188.00 | -0.13 | 0.09 | 0.57 | 0.19 |
| Cross Setback Heel (200' FNL, 2299' FEL) | 7203.78 | 85.53 | 178.81 | 6664.78 | -152.35 | 202.98 | -746.66 | 3.26 |
| Last SLB MWD Survey | 17289.00 | 90.35 | 179.51 | 6699.66 | 9902.85 | -9880.18 | -669.83 | 1.01 |
| Projection to TD (202' FSL, 2320' FEL) | 17317.00 | 90.35 | 179.51 | 6699.49 | 9930.77 | -9908.17 | -669.59 | 0.00 |



Vertical Section (ft) Azim = 183.85° Scale = 1:2500.00(ft) Origin = 0N/-S, 0E/-W

Booth Federal DD06-745 IFR1+MS 0' to 17317' Definitive Survey Geodetic Report (Def Survey)



Report Date: October 11, 2022 - 11:25 AM
Client: Chevron RBU
Field: CO, Weld County (NAD 83 NZ) - 2019
Structure / Slot: Chevron RBU 31-04N-63W (CC31-02-A Pad) / Booth Federal DD06-745
Well: Booth Federal DD06-745
Borehole: Original Hole
UWI / API#: Unknown / 05-123-49275
Survey Name: Booth Federal DD06-745 IFR1+MS 0' to 17317' Definitive
Survey Date: September 08, 2022
Tort / AHD / DDI / ERD Ratio: 261.597 ° / 11945.467 ft / 6.907 / 1.781
Coordinate Reference System: NAD83 Colorado State Plane, Northern Zone, US Feet
Location Lat / Long: N 40° 16' 29.82000", W 104° 28' 35.86900"
Location Grid N/E Y/X: N 1344653.328 ftUS, E 3285538.538 ftUS
CRS Grid Convergence Angle: 0.6612 °
Grid Scale Factor: 0.99995694
Version / Patch: 2.10.833.1

Survey / DLS Computation: Minimum Curvature / Lubinski
Vertical Section Azimuth: 183.853 ° (Grid North)
Vertical Section Origin: 0.000 ft, 0.000 ft
TVD Reference Datum: KB = 29ft
TVD Reference Elevation: 4817.000 ft above MSL
Seabed / Ground Elevation: 4788.000 ft above MSL
Magnetic Declination: 7.895 °
Total Gravity Field Strength: 999.0281mgn (9.80665 Based)
Gravity Model: GARM
Total Magnetic Field Strength: 51795.000 nT
Magnetic Dip Angle: 66.600 °
Declination Date: September 08, 2022
Magnetic Declination Model: IFR1
North Reference: Grid North
Grid Convergence Used: 0.6612 °
Total Corr Mag North->Grid North: 7.2338 °
Local Coord Referenced To: Well Head

| Comments | MD (ft) | Incl (°) | Azim Grid (°) | TVD (ft) | VSEC (ft) | NS (ft) | EW (ft) | DLS (°/100ft) | Northing (ftUS) | Easting (ftUS) | Latitude (°) | Longitude (°) |
|----------------------|---------|----------|---------------|----------|-----------|---------|---------|---------------|-----------------|----------------|--------------|---------------|
| Surface | 0.00 | 0.00 | 0.00 | 0.00 | 0.00 | 0.00 | 0.00 | N/A | 1344653.42 | 3285538.54 | 40.274950 | -104.476630 |
| First SLB MWD Survey | 188.00 | 0.35 | 80.52 | 188.00 | -0.13 | 0.09 | 0.57 | 0.19 | 1344653.42 | 3285539.10 | 40.274950 | -104.476628 |
| | 274.00 | 0.40 | 60.22 | 274.00 | -0.36 | 0.29 | 1.09 | 0.16 | 1344653.61 | 3285539.62 | 40.274951 | -104.476626 |
| | 369.00 | 0.17 | 32.85 | 369.00 | -0.67 | 0.57 | 1.45 | 0.27 | 1344653.90 | 3285539.99 | 40.274952 | -104.476625 |
| | 464.00 | 0.28 | 84.60 | 464.00 | -0.83 | 0.71 | 1.76 | 0.23 | 1344654.04 | 3285540.30 | 40.274952 | -104.476624 |
| | 559.00 | 0.19 | 81.73 | 558.99 | -0.90 | 0.75 | 2.14 | 0.10 | 1344654.08 | 3285540.68 | 40.274952 | -104.476622 |
| | 654.00 | 0.27 | 150.47 | 653.99 | -0.74 | 0.58 | 2.41 | 0.28 | 1344653.91 | 3285540.95 | 40.274952 | -104.476621 |
| | 749.00 | 0.39 | 148.94 | 748.99 | -0.29 | 0.11 | 2.69 | 0.13 | 1344653.44 | 3285541.23 | 40.274950 | -104.476620 |
| | 844.00 | 0.37 | 176.32 | 843.99 | 0.28 | -0.47 | 2.87 | 0.19 | 1344652.86 | 3285541.41 | 40.274949 | -104.476620 |
| | 938.00 | 0.36 | 177.31 | 937.99 | 0.87 | -1.07 | 2.91 | 0.01 | 1344652.26 | 3285541.45 | 40.274947 | -104.476620 |
| | 1033.00 | 0.36 | 186.17 | 1032.99 | 1.47 | -1.66 | 2.89 | 0.06 | 1344651.66 | 3285541.43 | 40.274945 | -104.476620 |
| | 1128.00 | 0.56 | 158.53 | 1127.98 | 2.18 | -2.39 | 3.03 | 0.31 | 1344650.93 | 3285541.57 | 40.274943 | -104.476619 |
| | 1223.00 | 0.55 | 178.65 | 1222.98 | 3.06 | -3.28 | 3.21 | 0.20 | 1344650.05 | 3285541.75 | 40.274941 | -104.476619 |
| | 1318.00 | 0.80 | 171.64 | 1317.97 | 4.16 | -4.39 | 3.32 | 0.28 | 1344648.93 | 3285541.85 | 40.274938 | -104.476618 |
| | 1412.00 | 0.66 | 166.56 | 1411.96 | 5.32 | -5.57 | 3.54 | 0.16 | 1344647.76 | 3285542.07 | 40.274935 | -104.476618 |
| | 1507.00 | 0.82 | 161.69 | 1506.96 | 6.47 | -6.75 | 3.88 | 0.18 | 1344646.58 | 3285542.42 | 40.274931 | -104.476616 |
| | 1602.00 | 0.84 | 182.14 | 1601.95 | 7.80 | -8.09 | 4.07 | 0.31 | 1344645.24 | 3285542.60 | 40.274928 | -104.476616 |
| | 1697.00 | 0.81 | 154.68 | 1696.94 | 9.08 | -9.39 | 4.33 | 0.41 | 1344643.94 | 3285542.86 | 40.274924 | -104.476615 |
| | 1792.00 | 0.63 | 150.91 | 1791.93 | 10.10 | -10.45 | 4.87 | 0.20 | 1344642.87 | 3285543.41 | 40.274921 | -104.476613 |
| | 1887.00 | 0.57 | 198.09 | 1886.93 | 11.00 | -11.36 | 4.97 | 0.51 | 1344641.97 | 3285543.51 | 40.274919 | -104.476613 |
| | 1982.00 | 0.55 | 203.55 | 1982.92 | 11.38 | -11.73 | 4.83 | 0.14 | 1344641.59 | 3285543.37 | 40.274918 | -104.476613 |
| | 1989.00 | 0.84 | 253.91 | 1988.92 | 11.81 | -12.13 | 4.29 | 1.06 | 1344641.20 | 3285542.82 | 40.274917 | -104.476615 |
| | 2084.00 | 0.60 | 253.79 | 2083.91 | 12.22 | -12.46 | 3.14 | 0.25 | 1344640.87 | 3285541.68 | 40.274916 | -104.476619 |
| | 2179.00 | 0.86 | 268.22 | 2178.90 | 12.46 | -12.62 | 1.95 | 0.33 | 1344640.71 | 3285540.49 | 40.274915 | -104.476624 |
| | 2274.00 | 3.60 | 314.04 | 2273.83 | 10.60 | -10.57 | -0.91 | 3.22 | 1344642.76 | 3285537.63 | 40.274921 | -104.476634 |
| | 2368.00 | 6.77 | 323.62 | 2367.43 | 4.47 | -4.05 | -6.32 | 3.48 | 1344649.27 | 3285532.22 | 40.274939 | -104.476653 |
| | 2463.00 | 9.57 | 319.31 | 2461.46 | -5.44 | 6.44 | -14.79 | 3.02 | 1344659.77 | 3285523.75 | 40.274968 | -104.476683 |
| | 2558.00 | 11.69 | 316.09 | 2554.83 | -17.54 | 19.37 | -26.61 | 2.32 | 1344672.69 | 3285511.93 | 40.275004 | -104.476725 |
| | 2653.00 | 12.73 | 322.03 | 2647.88 | -31.81 | 34.55 | -39.73 | 1.72 | 1344687.88 | 3285498.81 | 40.275046 | -104.476771 |
| | 2748.00 | 16.51 | 323.64 | 2739.59 | -49.92 | 53.68 | -54.18 | 4.00 | 1344707.01 | 3285484.36 | 40.275099 | -104.476822 |
| | 2843.00 | 20.88 | 331.47 | 2829.62 | -74.41 | 79.31 | -70.20 | 5.11 | 1344732.63 | 3285468.34 | 40.275170 | -104.476878 |
| | 2938.00 | 19.63 | 347.77 | 2918.87 | -103.93 | 109.66 | -81.60 | 6.00 | 1344762.99 | 3285456.94 | 40.275254 | -104.476918 |
| | 3033.00 | 17.53 | 343.02 | 3008.92 | -132.64 | 138.95 | -89.16 | 2.72 | 1344792.27 | 3285449.38 | 40.275334 | -104.476944 |
| | 3128.00 | 17.35 | 336.57 | 3099.56 | -158.61 | 165.63 | -98.97 | 2.04 | 1344818.95 | 3285439.57 | 40.275408 | -104.476978 |
| | 3222.00 | 15.30 | 335.73 | 3189.77 | -182.00 | 189.80 | -109.65 | 2.20 | 1344843.12 | 3285428.90 | 40.275474 | -104.477015 |
| | 3317.00 | 14.72 | 331.63 | 3281.53 | -203.27 | 211.85 | -120.53 | 1.27 | 1344865.16 | 3285418.01 | 40.275535 | -104.477053 |
| | 3412.00 | 15.00 | 326.59 | 3373.36 | -223.26 | 232.73 | -133.04 | 1.39 | 1344886.05 | 3285405.51 | 40.275593 | -104.477097 |
| | 3507.00 | 14.92 | 323.53 | 3465.14 | -242.37 | 252.83 | -147.08 | 0.84 | 1344906.14 | 3285391.47 | 40.275649 | -104.477147 |
| | 3602.00 | 14.57 | 324.68 | 3557.01 | -260.96 | 272.41 | -161.26 | 0.48 | 1344925.73 | 3285377.29 | 40.275703 | -104.477197 |
| | 3697.00 | 15.84 | 324.45 | 3648.68 | -280.24 | 292.71 | -175.70 | 1.34 | 1344946.03 | 3285362.84 | 40.275759 | -104.477248 |
| | 3792.00 | 17.76 | 326.34 | 3739.62 | -301.76 | 315.32 | -191.27 | 2.10 | 1344968.64 | 3285347.27 | 40.275822 | -104.477302 |
| | 3886.00 | 18.06 | 324.20 | 3829.07 | -324.35 | 339.07 | -207.74 | 0.77 | 1344992.39 | 3285330.81 | 40.275887 | -104.477360 |
| | 3981.00 | 17.88 | 327.05 | 3919.44 | -347.36 | 363.25 | -224.29 | 0.94 | 1345016.57 | 3285314.26 | 40.275954 | -104.477419 |
| | 4076.00 | 17.87 | 325.96 | 4009.85 | -370.54 | 387.57 | -240.38 | 0.35 | 1345040.88 | 3285298.17 | 40.276021 | -104.477475 |
| | 4171.00 | 19.96 | 322.22 | 4099.72 | -394.17 | 412.47 | -258.48 | 2.54 | 1345065.78 | 3285280.07 | 40.276090 | -104.477539 |
| | 4266.00 | 19.50 | 323.28 | 4189.14 | -418.33 | 437.99 | -277.89 | 0.61 | 1345091.30 | 3285260.66 | 40.276161 | -104.477608 |
| | 4360.00 | 18.46 | 324.09 | 4278.03 | -441.69 | 462.62 | -296.00 | 1.14 | 1345115.93 | 3285242.55 | 40.276229 | -104.477672 |
| | 4455.00 | 18.68 | 324.74 | 4368.09 | -465.05 | 487.23 | -313.60 | 0.32 | 1345140.53 | 3285224.95 | 40.276297 | -104.477734 |
| | 4550.00 | 18.59 | 324.85 | 4458.10 | -488.63 | 512.03 | -331.10 | 0.10 | 1345165.34 | 3285207.45 | 40.276366 | -104.477795 |
| | 4645.00 | 18.54 | 326.26 | 4548.16 | -512.36 | 536.97 | -348.21 | 0.48 | 1345190.28 | 3285190.34 | 40.276435 | -104.477856 |
| | 4740.00 | 18.14 | 327.94 | 4638.34 | -536.31 | 562.07 | -364.45 | 0.70 | 1345215.37 | 3285174.11 | 40.276504 | -104.477913 |
| | 4834.00 | 19.04 | 323.55 | 4727.44 | -559.85 | 586.80 | -381.33 | 1.77 | 1345240.10 | 3285157.23 | 40.276573 | -104.477972 |
| | 4929.00 | 18.99 | 325.11 | 4817.25 | -583.73 | 611.95 | -399.38 | 0.54 | 1345265.25 | 3285139.18 | 40.276642 | -104.478036 |
| | 5023.00 | 19.30 | 325.80 | 4906.05 | -607.89 | 637.34 | -416.85 | 0.41 | 1345290.64 | 3285121.70 | 40.276713 | -104.478097 |
| | 5118.00 | 18.77 | 327.34 | 4995.86 | -632.53 | 663.19 | -433.93 | 0.77 | 1345316.49 | 3285104.63 | 40.276784 | -104.478158 |
| | 5212.00 | 18.57 | 326.88 | 5084.91 | -656.65 | 688.46 | -450.27 | 0.26 | 1345341.76 | 3285088.29 | 40.276854 | -104.478215 |
| | 5307.00 | 18.31 | 325.86 | 5175.04 | -680.49 | 713.48 | -466.91 | 0.44 | 1345366.77 | 3285071.65 | 40.276923 | -104.478274 |
| | 5401.00 | 17.58 | 325.67 | 5264.46 | -703.29 | 737.42 | -483.20 | 0.78 | 1345390.72 | 3285055.36 | 40.276989 | -104.478331 |
| | 5496.00 | 17.66 | 326.60 | 5355.00 | -726.03 | 761.30 | -499.22 | 0.31 | 1345414.59 | 3285039.34 | 40.277055 | -104.478388 |
| | 5590.00 | 19.64 | 325.56 | 5444.06 | -749.78 | 786.23 | -516.01 | 2.14 | 1345439.53 | 3285022.55 | 40.277124 | -104.478447 |
| | 5685.00 | 18.77 | 328.09 | 5533.78 | -774.72 | 812.38 | -533.12 | 1.27 | 1345465.67 | 3285005.45 | 40.277197 | -104.478507 |
| | 5779.00 | 18.90 | 326.01 | 5622.75 | -799.01 | 837.84 | -549.62 | 0.73 | 1345491.13 | 3284988.94 | 40.277267 | -104.478565 |
| | 5874.00 | 18.97 | 326.34 | 5712.61 | -823.41 | 863.45 | -566.78 | 0.13 | 1345516.74 | 3284971.78 | 40.277338 | -104.478625 |
| | 5968.00 | 16.36 | 314.73 | 5802.19 | -844.20 | 885.49 | -584.66 | 4.65 | 1345538.78 | 3284953.90 | 40.277399 | -104.478689 |
| | 6063.00 | 7.48 | 259.63 | 5895.30 | -851.47 | 893.83 | -600.32 | 14.22 | 1345547.12 | 3284938.24 | 40.277422 | -104.478744 |
| | 6157.00 | 16.47 | 215.75 | 5987.32 | -838.61 | 881.87 | -614.18 | 12.98 | 1345535.16 | 3284924.39 | 40.277390 | -104.478795 |
| | 6252.00 | 20.17 | 206.42 | 6077.51 | -812.04 | 856.26 | -629.34 | 4.96 | 1345509.55 | 3284909.22 | 40.27732 | |

| Comments | MD (ft) | Incl (°) | Azim Grid (°) | TVD (ft) | VSEC (ft) | NS (ft) | EW (ft) | DLS (°/100ft) | Northing (ftUS) | Easting (ftUS) | Latitude (°) | Longitude (°) |
|-------------------------------|------------|-------------|------------------|-------------|--------------|------------|------------|------------------|--------------------|-------------------|-----------------|------------------|
| Cross Setback | | | | | | | | | | | | |
| Heel (200' FNL, 2299' FEL) | 7203.78 | 85.53 | 178.81 | 6664.78 | -152.35 | 202.98 | -746.66 | 3.26 | 1344856.30 | 3284791.91 | 40.275531 | -104.479297 |
| | 7294.00 | 86.76 | 181.49 | 6670.85 | -62.53 | 112.97 | -746.90 | 3.26 | 1344766.29 | 3284791.68 | 40.275284 | -104.479302 |
| | 7389.00 | 88.32 | 183.30 | 6674.92 | 32.35 | 18.15 | -750.86 | 2.51 | 1344671.48 | 3284787.71 | 40.275024 | -104.479320 |
| | 7484.00 | 88.87 | 177.88 | 6677.25 | 127.13 | -76.78 | -751.84 | 5.73 | 1344576.55 | 3284786.73 | 40.274763 | -104.479327 |
| | 7578.00 | 89.22 | 179.20 | 6678.82 | 220.71 | -170.74 | -749.45 | 1.45 | 1344482.60 | 3284789.13 | 40.274505 | -104.479323 |
| | 7673.00 | 89.65 | 179.40 | 6679.76 | 315.41 | -265.72 | -748.29 | 0.50 | 1344387.62 | 3284790.29 | 40.274244 | -104.479322 |
| | 7768.00 | 89.13 | 178.88 | 6680.77 | 410.08 | -360.71 | -746.86 | 0.77 | 1344292.64 | 3284791.71 | 40.273984 | -104.479321 |
| | 7863.00 | 89.68 | 179.18 | 6681.76 | 504.74 | -455.69 | -745.25 | 0.66 | 1344197.66 | 3284793.32 | 40.273723 | -104.479319 |
| | 7957.00 | 89.35 | 179.78 | 6682.55 | 598.46 | -549.68 | -744.40 | 0.73 | 1344103.67 | 3284794.17 | 40.273465 | -104.479320 |
| | 8052.00 | 89.71 | 179.48 | 6683.33 | 693.20 | -644.67 | -743.78 | 0.49 | 1344008.68 | 3284794.79 | 40.273204 | -104.479322 |
| | 8147.00 | 89.30 | 179.73 | 6684.15 | 787.93 | -739.67 | -743.13 | 0.51 | 1343913.69 | 3284795.44 | 40.272943 | -104.479324 |
| | 8242.00 | 89.84 | 179.55 | 6684.86 | 882.67 | -834.66 | -742.53 | 0.60 | 1343818.70 | 3284796.04 | 40.272683 | -104.479325 |
| | 8336.00 | 90.53 | 179.83 | 6684.56 | 976.42 | -928.66 | -742.02 | 0.79 | 1343724.71 | 3284796.55 | 40.272425 | -104.479327 |
| | 8431.00 | 90.63 | 179.77 | 6683.60 | 1071.18 | -1023.66 | -741.69 | 0.12 | 1343629.72 | 3284796.88 | 40.272164 | -104.479330 |
| | 8526.00 | 90.62 | 180.08 | 6682.56 | 1165.95 | -1118.65 | -741.57 | 0.33 | 1343534.73 | 3284797.00 | 40.271903 | -104.479334 |
| | 8621.00 | 89.56 | 179.54 | 6682.41 | 1260.71 | -1213.65 | -741.25 | 1.25 | 1343439.73 | 3284797.32 | 40.271642 | -104.479336 |
| | 8715.00 | 89.74 | 179.66 | 6682.99 | 1354.45 | -1307.64 | -740.60 | 0.23 | 1343345.74 | 3284797.97 | 40.271384 | -104.479338 |
| | 8810.00 | 89.75 | 180.20 | 6683.41 | 1449.23 | -1402.64 | -740.48 | 0.57 | 1343250.75 | 3284798.09 | 40.271123 | -104.479341 |
| | 8905.00 | 89.73 | 179.33 | 6683.84 | 1543.99 | -1497.64 | -740.09 | 0.92 | 1343155.76 | 3284798.48 | 40.270863 | -104.479344 |
| | 9000.00 | 89.51 | 179.06 | 6684.47 | 1638.67 | -1592.63 | -738.76 | 0.37 | 1343060.77 | 3284799.81 | 40.270602 | -104.479343 |
| | 9095.00 | 89.15 | 180.56 | 6685.58 | 1733.42 | -1687.62 | -738.44 | 1.62 | 1342965.79 | 3284800.13 | 40.270341 | -104.479346 |
| | 9189.00 | 89.20 | 179.94 | 6686.94 | 1827.23 | -1781.61 | -738.85 | 0.66 | 1342871.80 | 3284799.72 | 40.270083 | -104.479351 |
| | 9284.00 | 89.62 | 176.36 | 6687.91 | 1921.74 | -1876.54 | -735.79 | 3.79 | 1342776.88 | 3284802.79 | 40.269823 | -104.479344 |
| | 9379.00 | 89.58 | 174.66 | 6688.58 | 2015.73 | -1971.24 | -728.35 | 1.79 | 1342682.18 | 3284810.22 | 40.269562 | -104.479321 |
| | 9474.00 | 89.62 | 177.59 | 6689.24 | 2109.85 | -2066.01 | -721.93 | 3.08 | 1342587.41 | 3284816.64 | 40.269302 | -104.479302 |
| | 9569.00 | 89.84 | 179.96 | 6689.69 | 2204.47 | -2160.98 | -719.90 | 2.51 | 1342492.45 | 3284818.67 | 40.269041 | -104.479299 |
| | 9663.00 | 89.59 | 179.76 | 6690.16 | 2298.24 | -2254.98 | -719.67 | 0.34 | 1342398.45 | 3284818.90 | 40.268783 | -104.479302 |
| | 9758.00 | 89.74 | 179.06 | 6690.71 | 2392.95 | -2349.97 | -718.69 | 0.75 | 1342303.46 | 3284819.88 | 40.268523 | -104.479302 |
| | 9853.00 | 89.51 | 179.02 | 6691.33 | 2487.62 | -2444.96 | -717.10 | 0.25 | 1342208.48 | 3284821.47 | 40.268262 | -104.479301 |
| | 9947.00 | 89.85 | 178.64 | 6691.86 | 2581.25 | -2539.93 | -715.18 | 0.54 | 1342114.51 | 3284823.39 | 40.268004 | -104.479298 |
| | 10042.00 | 90.56 | 178.05 | 6691.52 | 2675.81 | -2633.89 | -712.44 | 0.97 | 1342019.55 | 3284826.13 | 40.267743 | -104.479292 |
| | 10137.00 | 90.23 | 178.93 | 6690.86 | 2770.39 | -2728.86 | -709.93 | 0.99 | 1341924.59 | 3284828.64 | 40.267482 | -104.479287 |
| | 10232.00 | 90.34 | 180.48 | 6690.39 | 2865.14 | -2823.85 | -709.44 | 1.64 | 1341829.60 | 3284829.13 | 40.267222 | -104.479289 |
| | 10327.00 | 90.43 | 178.92 | 6689.75 | 2959.89 | -2918.84 | -708.95 | 1.64 | 1341734.61 | 3284829.62 | 40.266961 | -104.479291 |
| | 10516.00 | 90.15 | 178.71 | 6688.80 | 3148.15 | -3107.80 | -705.04 | 0.19 | 1341545.67 | 3284833.53 | 40.266644 | -104.479285 |
| | 10611.00 | 90.38 | 178.63 | 6688.36 | 3242.76 | -3202.78 | -702.83 | 0.26 | 1341450.70 | 3284835.74 | 40.266381 | -104.479281 |
| | 10706.00 | 89.99 | 178.91 | 6688.05 | 3337.39 | -3297.75 | -700.79 | 0.51 | 1341355.72 | 3284837.78 | 40.266121 | -104.479277 |
| | 10800.00 | 90.30 | 178.90 | 6687.81 | 3431.04 | -3391.73 | -699.00 | 0.33 | 1341261.75 | 3284839.57 | 40.265863 | -104.479275 |
| | 10895.00 | 90.46 | 179.28 | 6687.18 | 3525.71 | -3486.72 | -697.49 | 0.43 | 1341166.76 | 3284841.08 | 40.265602 | -104.479273 |
| | 10990.00 | 90.53 | 180.34 | 6686.36 | 3620.47 | -3581.72 | -697.17 | 1.12 | 1341071.77 | 3284841.40 | 40.265341 | -104.479276 |
| | 11085.00 | 89.75 | 180.77 | 6686.13 | 3715.31 | -3676.71 | -698.09 | 0.94 | 1340976.78 | 3284840.48 | 40.265080 | -104.479283 |
| | 11180.00 | 89.45 | 180.45 | 6686.79 | 3810.15 | -3771.70 | -699.11 | 0.46 | 1340881.80 | 3284839.46 | 40.264820 | -104.479291 |
| | 11274.00 | 90.22 | 180.52 | 6687.06 | 3903.99 | -3865.70 | -699.90 | 0.82 | 1340787.81 | 3284838.67 | 40.264562 | -104.479298 |
| | 11369.00 | 89.98 | 180.42 | 6686.90 | 3998.82 | -3959.69 | -700.68 | 0.27 | 1340692.81 | 3284837.89 | 40.264301 | -104.479304 |
| | 11464.00 | 89.48 | 178.89 | 6687.35 | 4093.57 | -4053.69 | -700.11 | 1.69 | 1340597.82 | 3284838.46 | 40.264040 | -104.479306 |
| | 11559.00 | 89.77 | 179.69 | 6687.97 | 4188.26 | -4147.68 | -698.93 | 0.90 | 1340502.84 | 3284839.64 | 40.263779 | -104.479306 |
| | 11653.00 | 90.03 | 179.95 | 6688.13 | 4282.03 | -4242.68 | -698.64 | 0.39 | 1340408.84 | 3284839.93 | 40.263518 | -104.479309 |
| | 11748.00 | 89.92 | 179.47 | 6688.17 | 4376.78 | -4337.68 | -698.15 | 0.52 | 1340313.85 | 3284840.41 | 40.263257 | -104.479311 |
| | 11843.00 | 90.12 | 181.02 | 6688.14 | 4471.59 | -4432.67 | -698.56 | 1.65 | 1340218.86 | 3284840.01 | 40.262996 | -104.479316 |
| | 11938.00 | 90.36 | 179.81 | 6687.74 | 4566.42 | -4527.67 | -699.25 | 1.30 | 1340123.87 | 3284839.32 | 40.262735 | -104.479323 |
| | 12032.00 | 90.13 | 179.85 | 6687.34 | 4661.20 | -4622.66 | -698.97 | 0.25 | 1340029.87 | 3284839.60 | 40.262474 | -104.479325 |
| | 12127.00 | 90.22 | 179.74 | 6687.05 | 4754.94 | -4717.66 | -698.63 | 0.15 | 1339934.88 | 3284839.94 | 40.262213 | -104.479328 |
| | 12222.00 | 90.08 | 180.56 | 6686.80 | 4849.74 | -4812.66 | -698.88 | 0.88 | 1339839.89 | 3284839.69 | 40.261952 | -104.479333 |
| | 12317.00 | 89.81 | 180.41 | 6686.89 | 4944.58 | -4907.66 | -699.68 | 0.33 | 1339744.89 | 3284838.89 | 40.261691 | -104.479340 |
| | 12412.00 | 89.68 | 180.30 | 6687.31 | 5039.40 | -5002.66 | -700.27 | 0.18 | 1339649.90 | 3284838.30 | 40.261430 | -104.479346 |
| | 12506.00 | 89.39 | 180.48 | 6688.08 | 5133.23 | -5097.65 | -700.91 | 0.36 | 1339555.91 | 3284837.66 | 40.261169 | -104.479352 |
| | 12601.00 | 89.52 | 180.28 | 6688.98 | 5228.05 | -5192.64 | -701.54 | 0.25 | 1339460.92 | 3284837.07 | 40.260908 | -104.479358 |
| | 12696.00 | 90.45 | 180.93 | 6689.01 | 5322.89 | -5287.64 | -702.54 | 1.19 | 1339365.93 | 3284836.03 | 40.260647 | -104.479366 |
| | 12791.00 | 89.96 | 179.00 | 6688.67 | 5417.67 | -5382.63 | -702.49 | 2.10 | 1339270.94 | 3284836.08 | 40.260386 | -104.479369 |
| | 12886.00 | 89.32 | 180.13 | 6689.26 | 5512.40 | -5477.63 | -701.77 | 1.37 | 1339175.95 | 3284836.80 | 40.260125 | -104.479371 |
| | 12980.00 | 89.56 | 178.68 | 6690.18 | 5606.11 | -5572.61 | -700.79 | 1.56 | 1339081.97 | 3284837.78 | 40.259864 | -104.479371 |
| | 13075.00 | 89.74 | 179.72 | 6690.76 | 5700.79 | -5667.60 | -699.46 | 1.11 | 1338986.98 | 3284839.11 | 40.259603 | -104.479370 |
| | 13170.00 | 89.77 | 178.89 | 6691.17 | 5795.49 | -5762.59 | -698.31 | 0.87 | 1338892.00 | 3284840.26 | 40.259342 | -104.479370 |
| | 13265.00 | 90.25 | 177.62 | 6691.15 | 5890.04 | -5857.58 | -695.42 | 1.43 | 1338797.05 | 3284843.15 | 40.259081 | -104.479364 |
| | 13359.00 | 89.69 | 180.48 | 6691.20 | 5983.70 | -5952.57 | -693.86 | 3.10 | 1338703.07 | 3284844.71 | 40.258820 | -104.479362 |
| | 13454.00 | 89.93 | 179.19 | 6691.52 | 6078.46 | -6047.56 | -693.59 | 1.38 | 1338608.08 | 3284844.98 | 40.258559 | -104.479365 |
| | 13549.00 | 88.61 | 180.69 | 6692.73 | 6173.23 | -6142.51 | -693.49 | 2.10 | 1338513.10 | 3284845.08 | 40.258298 | -104.479368 |
| | 13738.00 | 90.02 | 180.11 | 6694.99 | 6361.87 | -6329.48 | -694.81 | 0.81 | 1338324.13 | 3284843.76 | 40.257999 | -104.479381 |
| | 13833.00 | 89.72 | 181.07 | 6695.20 | 6456.71 | -6424.48 | -695.78 | 1.06 | 1338229.14 | 3284842.79 | 40.257738 | -104.479388 |
| | 13928.00 | 89.75 | 180.86 | 6695.64 | 6551.59 | -6519.46 | -697.38 | 0.22 | 1338134.16 | 3284841.19 | 40.257477 | -104.479398 |
| | 14023.00 | 89.48 | 179. | | | | | | | | | |

| Comments | MD (ft) | Incl (°) | Azim Grid (°) | TVD (ft) | VSEC (ft) | NS (ft) | EW (ft) | DLS (°/100ft) | Northing (ftUS) | Easting (ftUS) | Latitude (°) | Longitude (°) |
|--|----------|----------|---------------|----------|-----------|----------|---------|---------------|-----------------|----------------|--------------|---------------|
| Projection to TD (202' FSL, 2320' FEL) | 17317.00 | 90.35 | 179.51 | 6699.49 | 9930.77 | -9908.17 | -669.59 | 0.00 | 1334745.60 | 3284868.98 | 40.247775 | -104.479438 |

Survey Type: Def Survey

Survey Error Model: ISCWSA Rev 3 *** 3-D 97.071% Confidence 3.0000 sigma
 Survey Program:

| Description | Part | MD From (ft) | MD To (ft) | EOU Freq (ft) | Hole Size (in) | Casing Diameter (in) | Survey Tool Type | Borehole / Survey |
|-------------|------|--------------|------------|---------------|----------------|----------------------|----------------------------|--|
| | 1 | 0.000 | 29.000 | 1/98.425 | 13.500 | 9.625 | A005Mb_MWD+IFR1-Depth Only | Original Hole / Booth Federal DD06-745 IFR1+MS 0' to 17317' Definitive |
| | 1 | 29.000 | 29.000 | Act Stns | 13.500 | 9.625 | A005Mb_MWD+IFR1-Depth Only | Original Hole / Booth Federal DD06-745 IFR1+MS 0' to 17317' Definitive |
| | 1 | 29.000 | 1928.000 | Act Stns | 13.500 | 9.625 | A005Mb_MWD+IFR1 | Original Hole / Booth Federal DD06-745 IFR1+MS 0' to 17317' Definitive |
| | 1 | 1928.000 | 17317.000 | Act Stns | 8.500 | 5.500 | A008Mb_MWD+IFR1+MS | Original Hole / Booth Federal DD06-745 IFR1+MS 0' to 17317' |