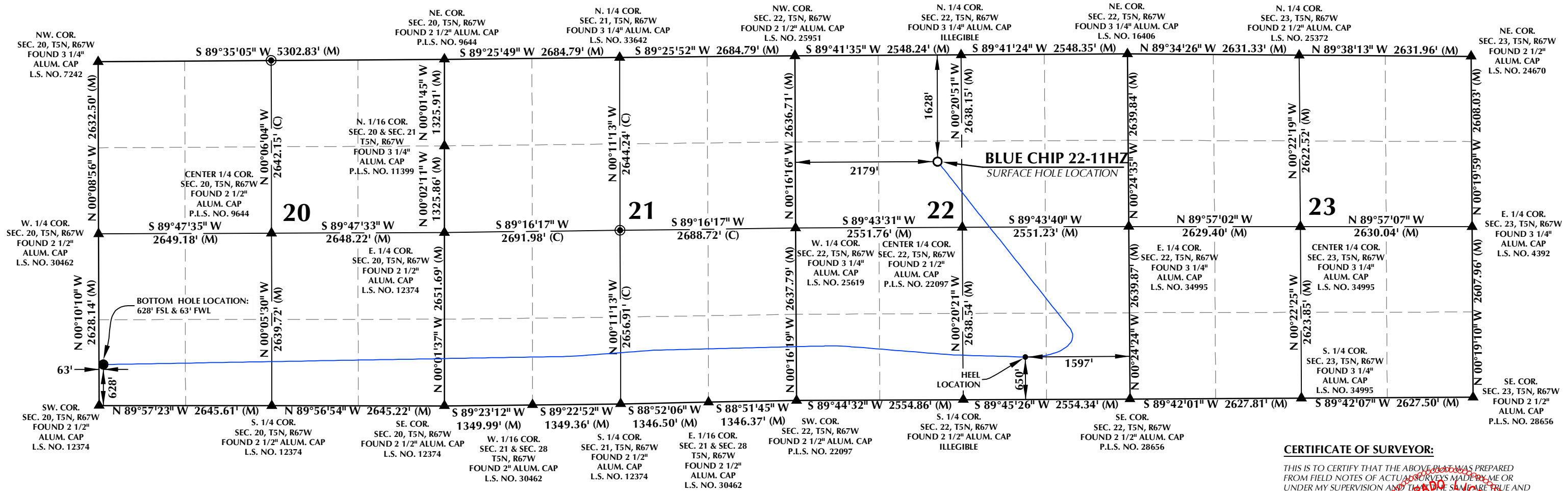
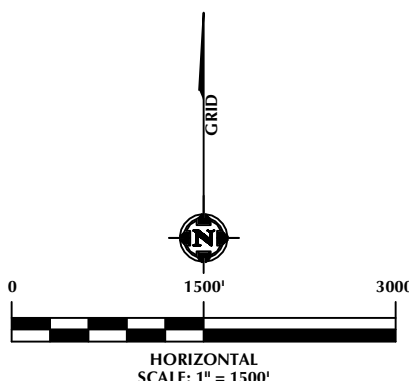


# T5N, R67W



**SURFACE HOLE LOCATION: NAD 83**  
 GROUND ELEVATION= 5037.0'  
 LATITUDE= 40.387952°  
 LONGITUDE= -104.880308°  
**HEEL LOCATION: NAD 83**  
 LATITUDE= 40.379712°  
 LONGITUDE= -104.875554°  
 LATITUDE= 40°22'46.965"  
 LONGITUDE= -104°52'31.996"  
**BOTTOM HOLE LOCATION: NAD 83**  
 LATITUDE= 40.379657°  
 LONGITUDE= -104.926270°  
 LATITUDE= 40°22'46.765"  
 LONGITUDE= -104°55'34.572"

- NOTES:**
- ▲ INDICATES SECTION CORNER.
  - INDICATES CALCULATED CORNER.
  - ELEVATION BASED ON NAVD88 (GEOID18).
  - BASIS OF BEARINGS DERIVED FROM COLORADO COORDINATE SYSTEM OF 1983, NORTH ZONE.
  - ALL MEASURED DISTANCES ARE GRID.
  - COMBINED SCALE FACTOR: .99972348 CALCULATED FROM THE N. 1/4 CORNER OF SECTION 21, T5N, R67W.
  - OPERATOR: TOBY OSBORN / PDOP = 1.5.
  - WELL FOOTAGES ARE MEASURED AT RIGHT ANGLES TO THE SECTION LINES.



**CERTIFICATE OF SURVEYOR:**

THIS IS TO CERTIFY THAT THE ABOVE PLAT WAS PREPARED FROM FIELD NOTES OF ACTUAL SURVEYS MADE BY ME OR UNDER MY SUPERVISION AND THAT THE SAME ARE TRUE AND CORRECT TO THE BEST OF MY KNOWLEDGE AND BELIEF. THIS CERTIFICATE DOES NOT REPRESENT A LAND SURVEY PLAT OR IMPROVEMENT SURVEY PLAT AS DEFINED BY C.R.S. 38-51-102 AND CANNOT BE RELIED UPON TO DETERMINE OWNERSHIP.

*Randall K. French*  
 RANDALL K. FRENCH  
 PROFESSIONAL LAND SURVEYOR  
 COLORADO REGISTRATION NUMBER 38512

9/29/22

NOTICE: ACCORDING TO COLORADO STATE LAW YOU MUST COMMENCE ANY LEGAL ACTION BASED UPON ANY DEFECT IN THIS SURVEY WITHIN THREE YEARS AFTER YOU FIRST DISCOVER SUCH DEFECT. IN NO EVENT MAY ANY ACTION BASED UPON ANY DEFECT IN THIS SURVEY BE COMMENCED MORE THAN TEN YEARS FROM THE DATE ON THE CERTIFICATION SHOWN HEREON.

WELL PAD - BLUE CHIP 6-22HZ			
<b>BLUE CHIP 22-11HZ</b>			
<b>WELL LOCATION CERTIFICATE</b>			
1628' FNL & 2179' FWL (SEWN) (SURFACE HOLE LOCATION)			
650' FSL & 1597' FEL (SWSE) (HEEL LOCATION)			
LOCATED IN SECTION 22			
628' FSL & 63' FWL (SWSW) (BOTTOM HOLE LOCATION)			
LOCATED IN SECTION 20			
T5N, R67W, 6TH P.M.			
WELD COUNTY, COLORADO			
DRAFTED BY:	SJM	CHECKED BY:	RKF
DATE DRAFTED:	1/31/22	DATE SURVEYED:	8/18/21
REVISED:	9/29/22	FILE NAME:	20-128

**609 CONSULTING, LLC**

LOVELAND OFFICE  
 6706 North Franklin Avenue  
 Loveland, Colorado 80538  
 Phone 970-776-4331

SHERIDAN OFFICE  
 1095 Saberton Avenue  
 Sheridan, Wyoming 82801  
 Phone 307-674-0609

**Kerr-McGee Oil & Gas Onshore LP**

1099 18th Street  
 Denver, Colorado 80202