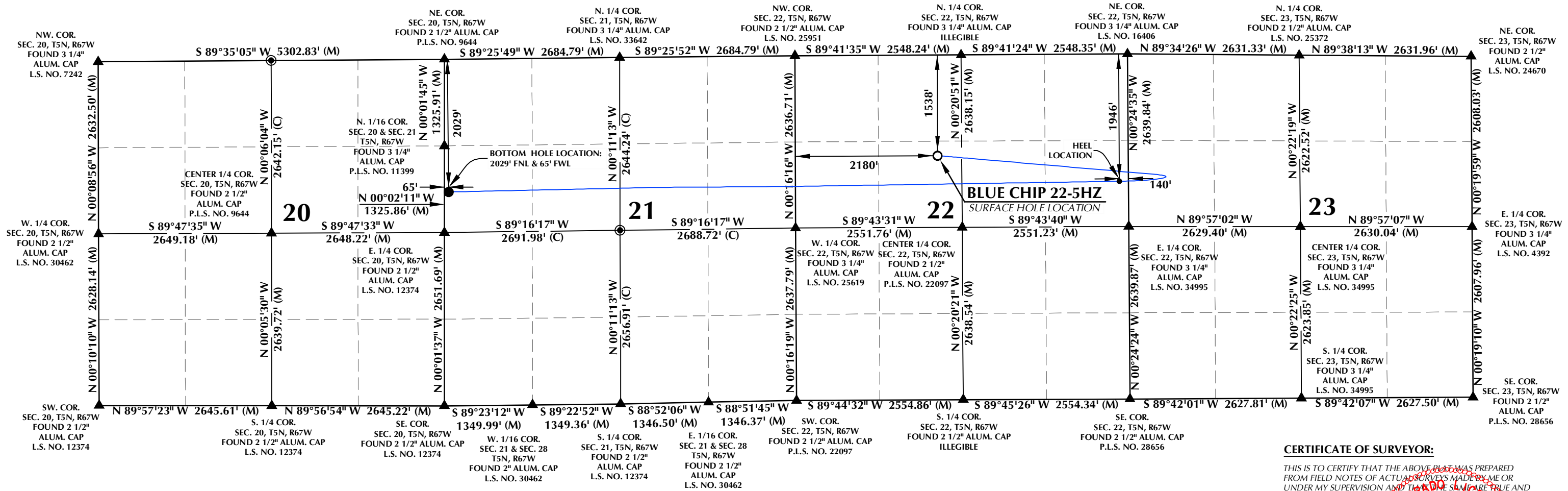
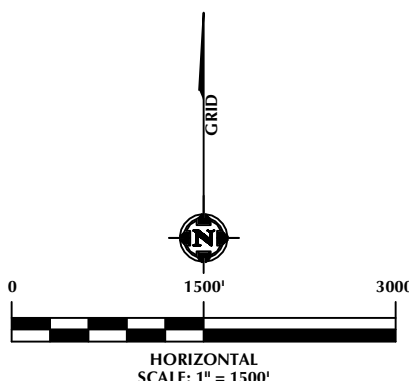


T5N, R67W



SURFACE HOLE LOCATION: NAD 83
 GROUND ELEVATION= 5036.5'
 LATITUDE= 40.388199°
 LONGITUDE= -104.880306°
 LATITUDE= 40°23'17.517"
 LONGITUDE= -104°52'49.100"
HEEL LOCATION: NAD 83
 LATITUDE= 40.387069°
 LONGITUDE= -104.870323°
 LATITUDE= 40°23'13.447"
 LONGITUDE= -104°52'13.163"
BOTTOM HOLE LOCATION: NAD 83
 LATITUDE= 40.386816°
 LONGITUDE= -104.907208°
 LATITUDE= 40°23'12.537"
 LONGITUDE= -104°54'25.948"

- NOTES:**
- ▲ INDICATES SECTION CORNER.
 - INDICATES CALCULATED CORNER.
 - ELEVATION BASED ON NAVD88 (GEOID18).
 - BASIS OF BEARINGS DERIVED FROM COLORADO COORDINATE SYSTEM OF 1983, NORTH ZONE.
 - ALL MEASURED DISTANCES ARE GRID. COMBINED SCALE FACTOR: .99972348 CALCULATED FROM THE N. 1/4 CORNER OF SECTION 21, T5N, R67W.
 - OPERATOR: TOBY OSBORN / PDOP = 1.5.
 - WELL FOOTAGES ARE MEASURED AT RIGHT ANGLES TO THE SECTION LINES.



CERTIFICATE OF SURVEYOR:

THIS IS TO CERTIFY THAT THE ABOVE PLAT WAS PREPARED FROM FIELD NOTES OF ACTUAL SURVEYS MADE BY ME OR UNDER MY SUPERVISION AND THAT THE SAME ARE TRUE AND CORRECT TO THE BEST OF MY KNOWLEDGE AND BELIEF. THIS CERTIFICATE DOES NOT REPRESENT A LAND SURVEY PLAT OR IMPROVEMENT SURVEY PLAT AS DEFINED BY C.R.S. 38-51-102 AND CANNOT BE RELIED UPON TO DETERMINE OWNERSHIP.

Randall K. French
 RANDALL K. FRENCH
 PROFESSIONAL LAND SURVEYOR
 COLORADO REGISTRATION NUMBER 38512

9/29/22

NOTICE: ACCORDING TO COLORADO STATE LAW YOU MUST COMMENCE ANY LEGAL ACTION BASED UPON ANY DEFECT IN THIS SURVEY WITHIN THREE YEARS AFTER YOU FIRST DISCOVER SUCH DEFECT. IN NO EVENT MAY ANY ACTION BASED UPON ANY DEFECT IN THIS SURVEY BE COMMENCED MORE THAN TEN YEARS FROM THE DATE ON THE CERTIFICATION SHOWN HEREON.

WELL PAD - BLUE CHIP 6-22HZ		
BLUE CHIP 22-5HZ		
WELL LOCATION CERTIFICATE		
1538' FNL & 2180' FWL (SENW) (SURFACE HOLE LOCATION)		
1946' FNL & 140' FEL (SENE) (HEEL LOCATION)		
LOCATED IN SECTION 22		
2029' FNL & 65' FWL (SWNW) (BOTTOM HOLE LOCATION)		
LOCATED IN SECTION 21		
T5N, R67W, 6TH P.M.		
WELD COUNTY, COLORADO		
DRAFTED BY:	SJM	CHECKED BY:
DATE DRAFTED:	1/31/22	DATE SURVEYED:
REVISED:	9/29/22	FILE NAME:
		RKF
		8/18/21
		20-128

609

CONSULTING, LLC

LOVELAND OFFICE
 6706 North Franklin Avenue
 Loveland, Colorado 80538
 Phone 970-776-4331

SHERIDAN OFFICE
 1095 Saberton Avenue
 Sheridan, Wyoming 82801
 Phone 307-674-0609

Kerr-McGee Oil & Gas Onshore LP

1099 18th Street
 Denver, Colorado 80202

K:\MADRAC\2020_128_BLUE_CHIP_T5N_R67W_SEC_22\PLATS\BLUE_CHIP\DWG_9/29/22_156337_AK1.smxd