



(001-05674)

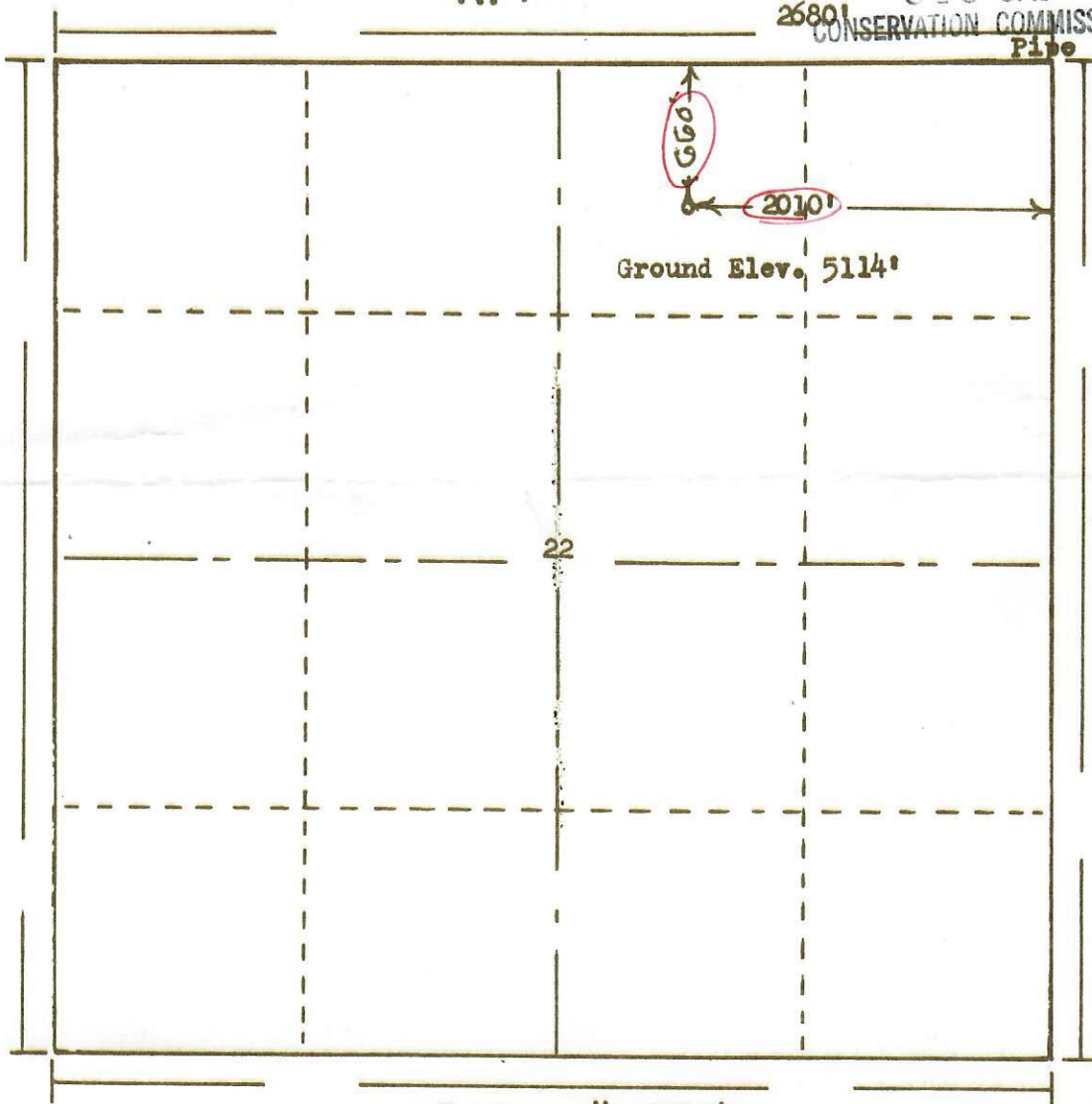
RECEIVED  
JAN 12 1965

JAN 12 1965

R. 59W

2680

CL & GAS  
CONSERVATION COMMISSION  
Pipe



38  
T

Scale ... 1" = 1000'

Powers Surveyors, Inc. of Denver, Colorado  
has in accordance with a request from Mr. Bergren  
for Cardinal Petroleum determined the  
Location of No.1 Noonan  
to be CNW NE Section 22 Township 38  
Range 59W of the 6th. Principal Meridian  
Adams County, Colorado

I hereby certify that this plat is an accurate representation of a correct survey showing the location of

Date:

1-7-65

*B. G. Hollander*  
Licensed Land Surveyor No. 2853  
State of Colorado



0079239