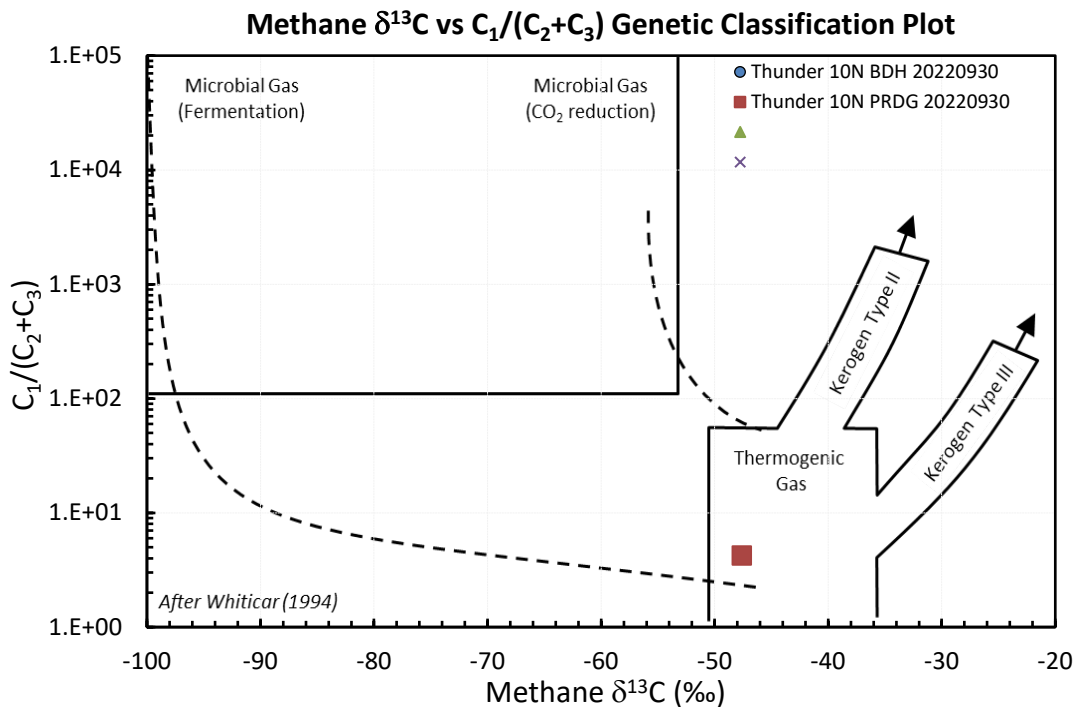
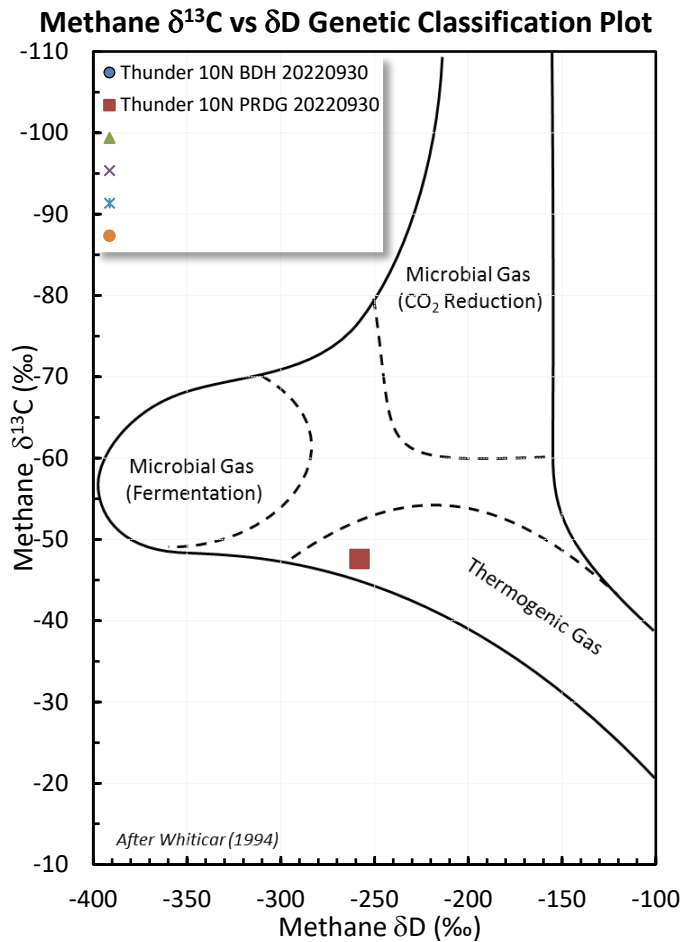
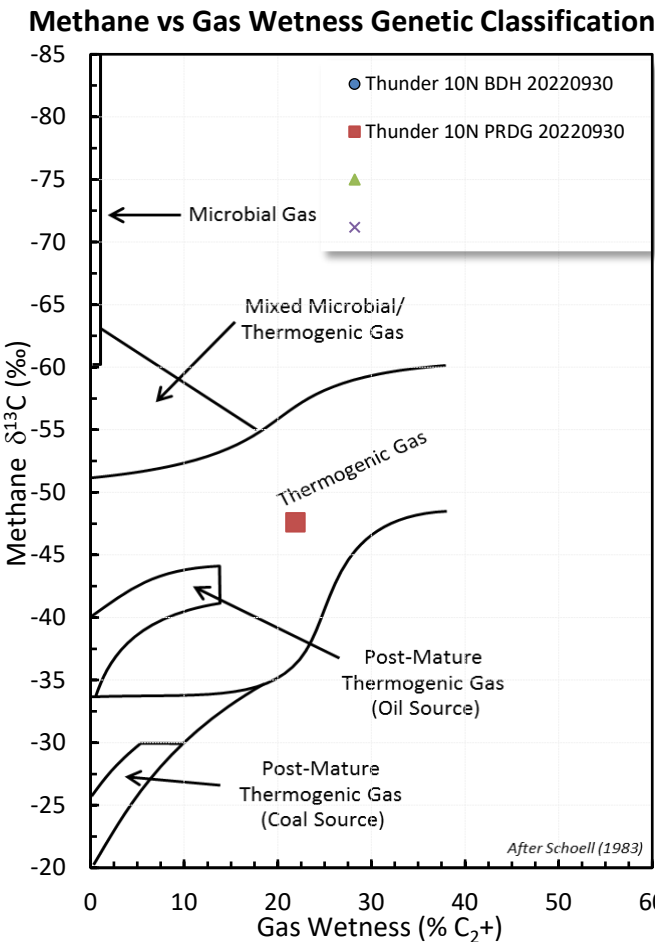
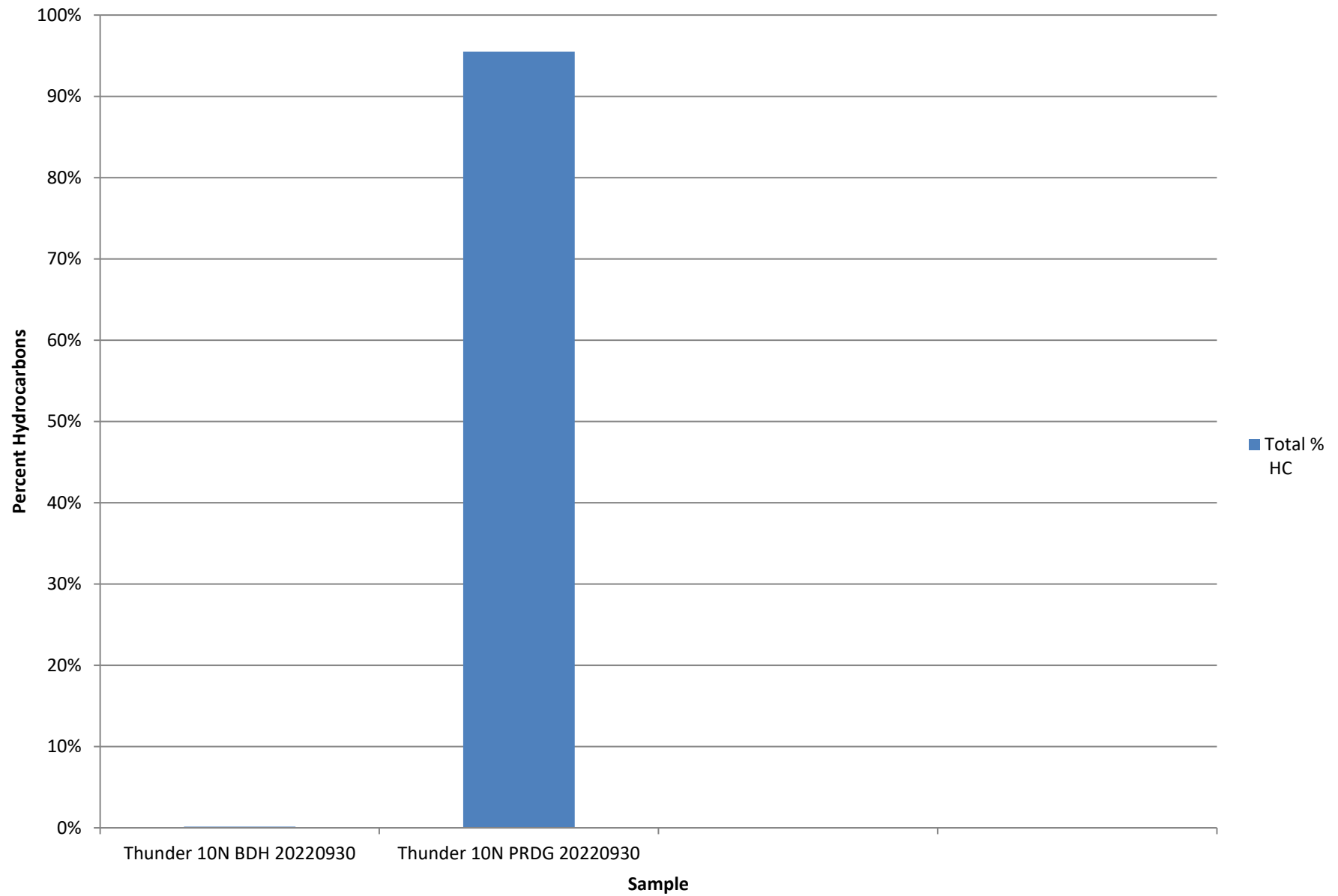
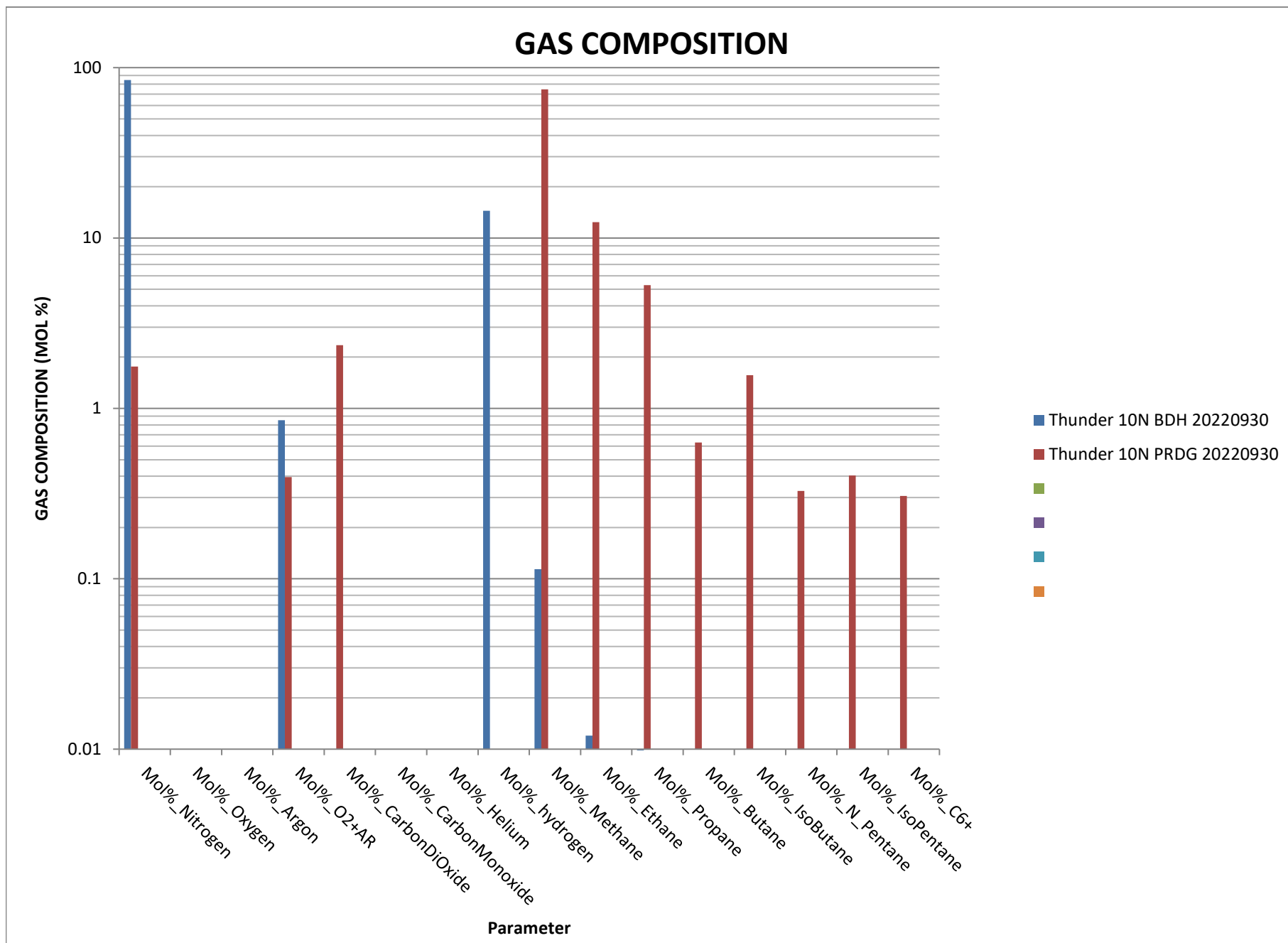


Stable Isotope Interpretive Plots



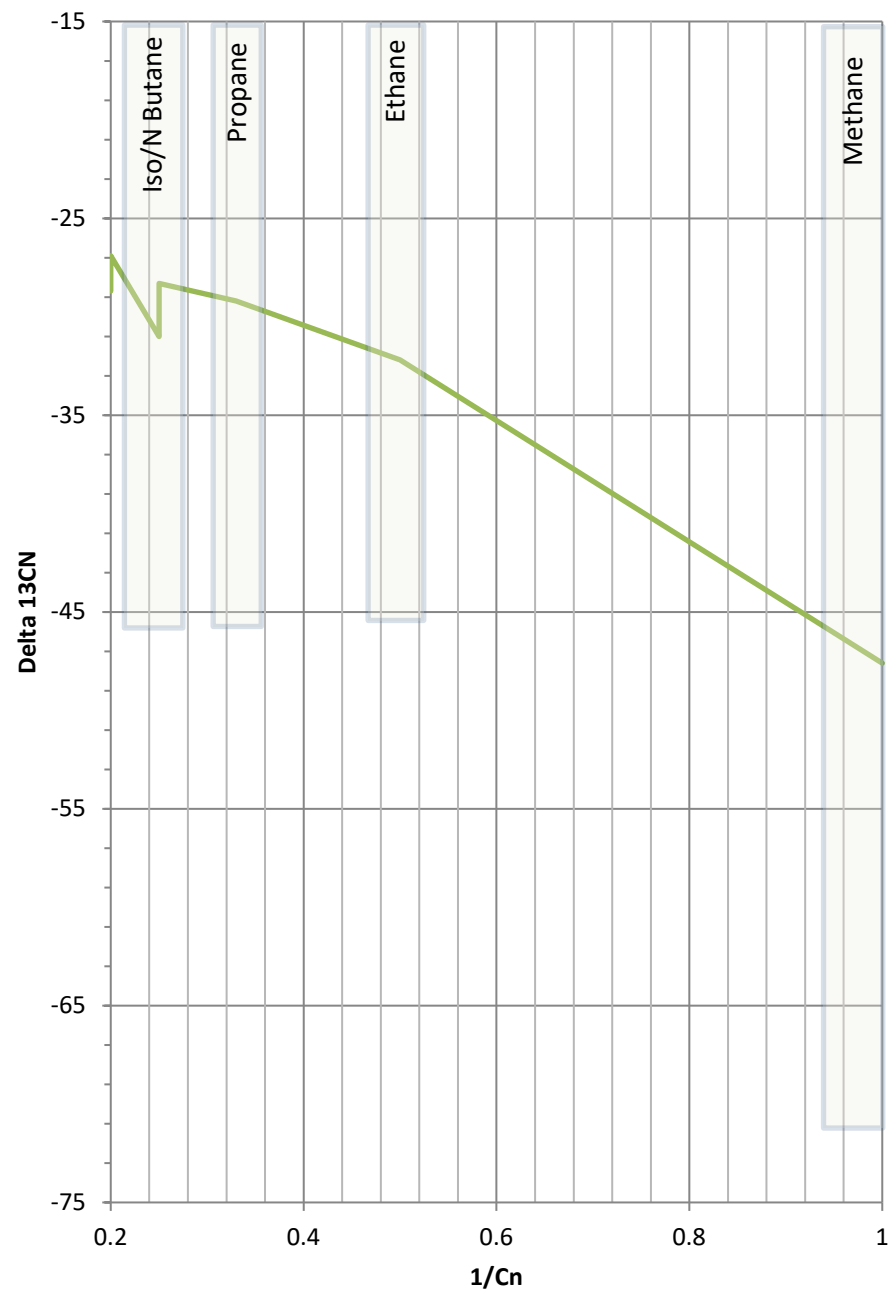
Total Percent Hydrocarbons





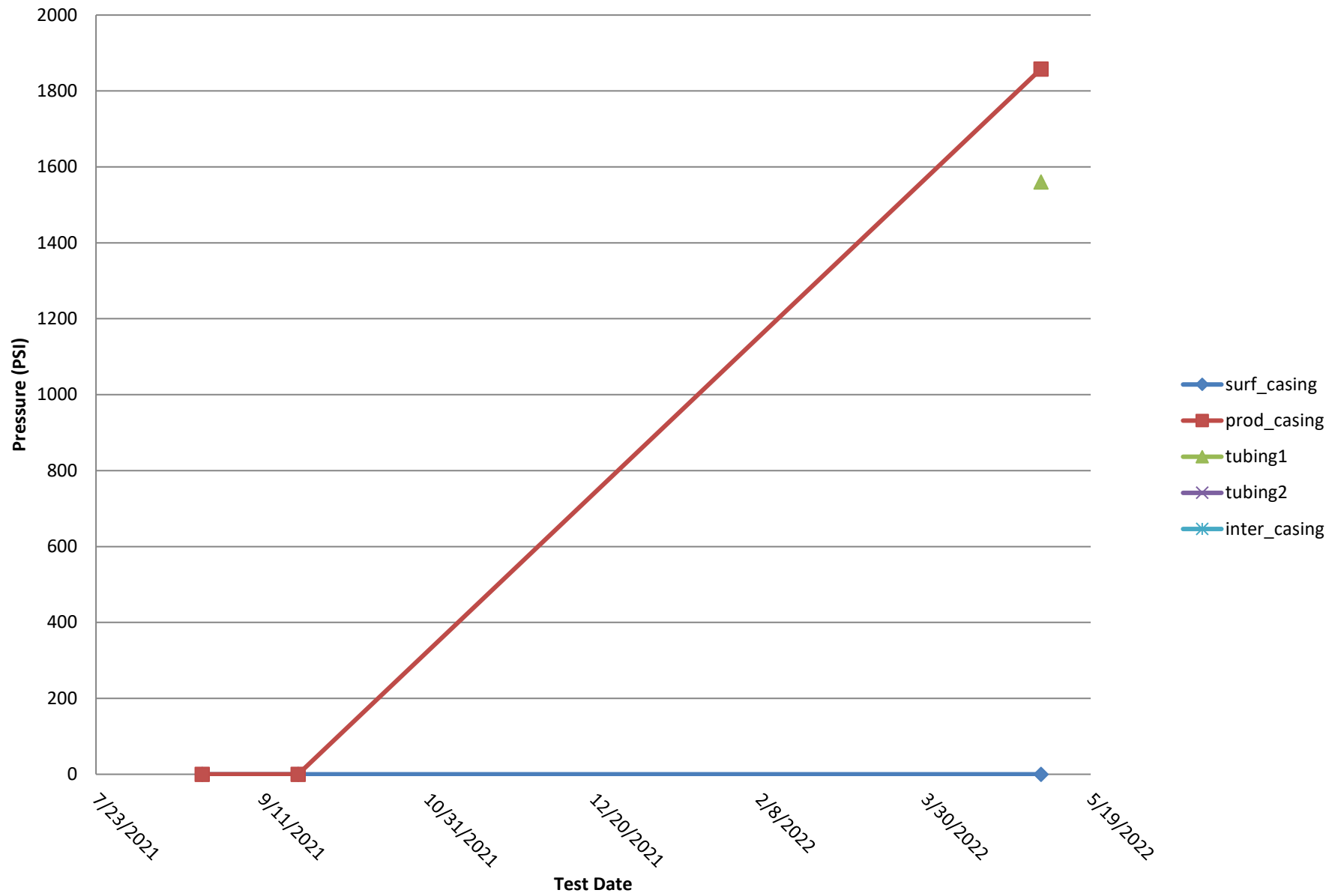
Sample Location	Thunder 10N BDH 20220930 (Mol %)	Thunder 10N PRDG 20220930 (Mol %)
Mol%_Methane	85	80
Mol%_Ethane	9	13
Mol%_Propane	5.5	5.5
Mol%_Butane	-	0.65
Mol%_IsoButane	-	1.6
Mol%_Pentane	-	0.35
Mol%_N_IsoPentane	-	0.45
Mol%_C6+	-	0.35

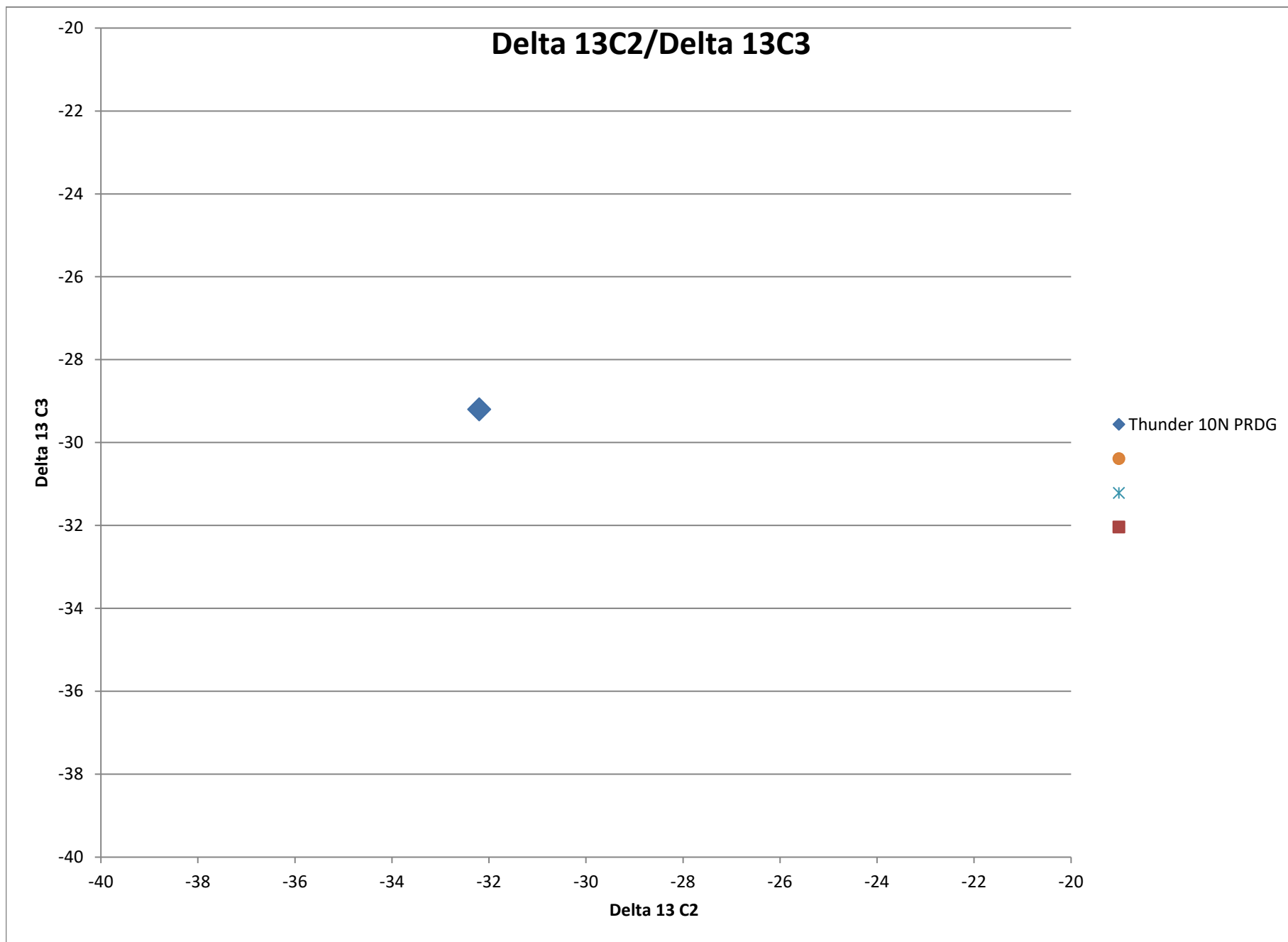
◆ Thunder 10N BDH 20220930
■ Thunder 10N PRDG 20220930
▲
✕



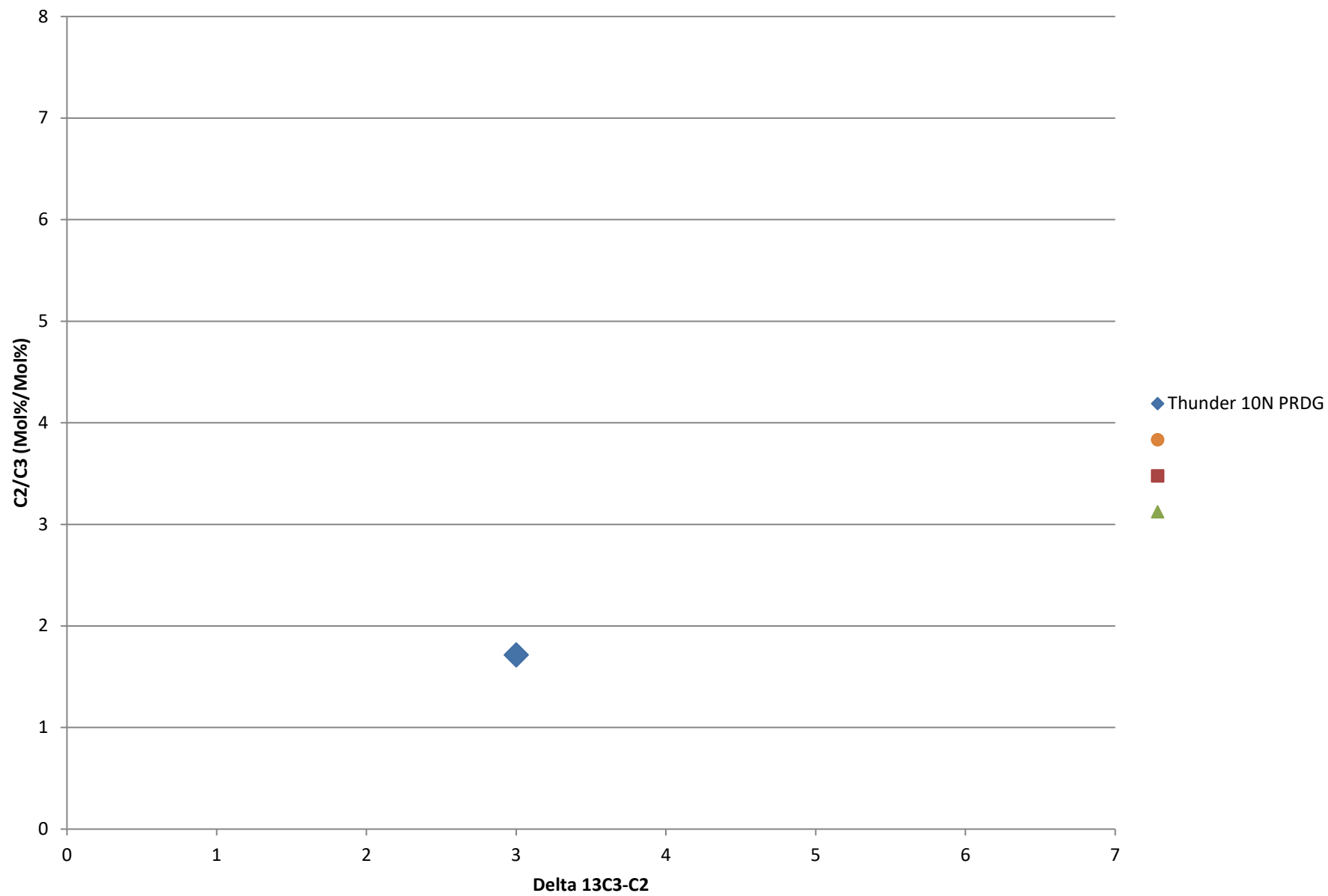
Thunder 10N PRDG

Bradenhead Test Summary





Delta13 C2/C3 vs. Delta 13C3-C2



Delta 13 IC4/ Delta NC4

