

Wellname:
Field:
County:
API:

SCHNEIDER 1-3

QTR:	SWSW
Sec:	3
Twp:	22S
Rge:	46W

KB:	3753
GL:	3742
Diff:	11

Casing Information

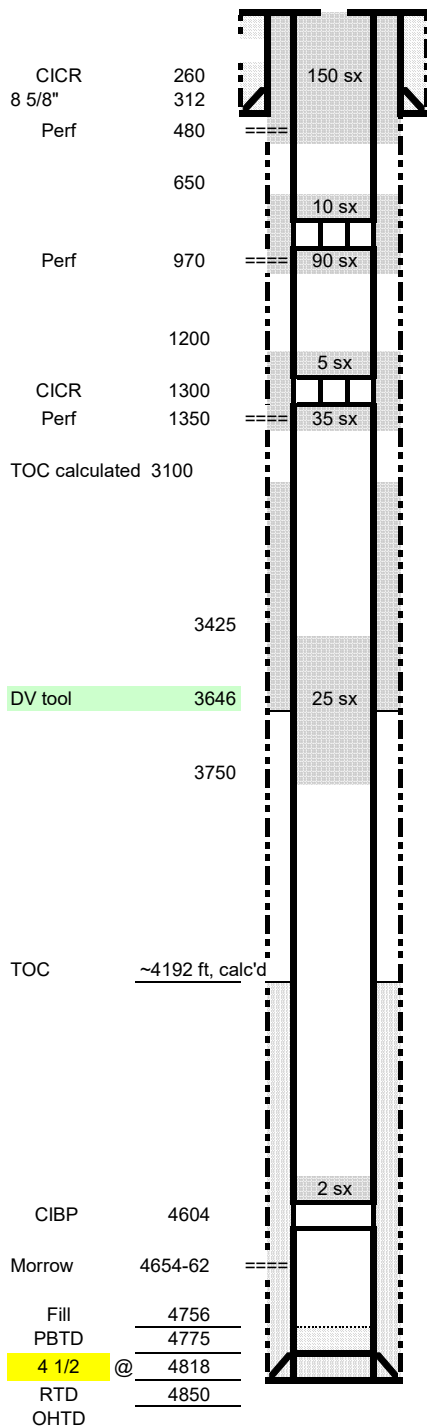
Size	Weight	Grade	Thread	Top	Btm	Date Run
8 5/8	24			0	312	10/5/84
4 1/2	10.5	J55	ST&C	0	4818	10/16/84
DV tool					3646	10/16/84
10/5/84	Cmt surf w/ 225 sks Common (12.3 ppg, 2.06 cf/sk)					
10/16/84	Cmt 1st stage 125 sx 50/50 poz cmt, good returns & 2nd stage 100 sx 50/50 poz					

DSTS

1) 3307-3342 (Topeka C)	45 ft GIP H2S & 735 ft H2S cut MW w/ oil spots	786-775#
2) 4633-4654 (Morrow Sd)	GTS 2', 3424 MCFD, 25' MW	1029-1029#

Producing Intervals

Formation	Top	Btm	SPF	# of holes	Date Shot	Status
Morrow sd	4654	4662	4	32	11/10/84	open



Set CIBP @4604 w/ 2 sx on top

Pump casing plug, 25 sx from 3750' - 3425'

Perf @ 1350', set CICR at 1300'. Squeeze cement with 35 sx, pmp 5 sx on top of CICR.

Perf @ 950', set CIRC @ 920'. Squeeze cement with 90 sx, pmp 10 sx on top of CIRC

Perf @ 480', Squeeze with 150 sx, circulating to surface, Top off in 4 1/2" to surface