

# **BAYSWATER EXPLORATION & PRODUCTION**

**WELD COUNTY**

**SEC 17-T7N-R65W**

**DEHAAN 8X-HC-16-07-65**

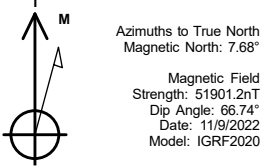
**OWB**

**Plan: PROPOSAL 1**

## **Standard Planning Report**

**17 November, 2022**

Project: WELD COUNTY  
Site: SEC 17-T7N-R65W  
Well: DEHAAN 8X-HC-16-07-65  
Wellbore: OWB  
Design: PROPOSAL 1



WELL DETAILS: DEHAAN 8X-HC-16-07-65

+N/-S	+E/-W	Northing	Easting	4906.00	Latitude	Longitude	Slot
0.00	0.00	1451675.93	3223801.81		40.570459°N	104.694396°W	

ANNOTATIONS

MD	Inc	Azi	TVD	+N/-S	+E/-W	VSect	Departure	Annotation
100.00	0.00	0.00	100.00	0.00	0.00	0.00	0.00	Start Build 2.00
460.77	7.22	237.75	459.82	-12.11	-19.19	-18.13	22.69	Start 6336.24 hold at 460.77 MD
6797.01	7.22	237.75	6745.88	-436.79	-692.23	-654.28	818.52	Start DLS 10.00 TFO -145.90
7756.85	90.00	91.64	7377.00	-497.66	-123.91	-82.88	1402.61	Start 9547.54 hold at 7756.85 MD
17304.39	90.00	91.64	7377.00	-771.28	9419.71	9451.23	10950.14	TD at 17304.39

SECTION DETAILS

Sec	MD	Inc	Azi	TVD	+N/-S	+E/-W	Dleg	TFace	VSect	Target
1	0.00	0.00	0.00	0.00	0.00	0.00	0.00	0.00	0.00	
2	100.00	0.00	0.00	100.00	0.00	0.00	0.00	0.00	0.00	
3	460.77	7.22	237.75	459.82	-12.11	-19.19	2.00	237.75	-18.13	
4	6797.01	7.22	237.75	6745.88	-436.79	-692.23	0.00	0.00	-654.28	
5	7756.85	90.00	91.64	7377.00	-497.66	-123.91	10.00	-145.90	-82.88	LP-DEHAAN 8-
6	17304.39	90.00	91.64	7377.00	-771.28	9419.71	0.00	0.00	9451.23	PBHL-DEHAAN

DESIGN TARGET DETAILS

Name	TVD	+N/-S	+E/-W	Northing	Easting	Latitude	Longitude
LP-DEHAAN 8X-HC	7377.00	-497.66	-123.91	1451177.19	3223682.44	40.569093°N	104.694842°W
- plan hits target center							
PBHL-DEHAAN 8X-HC	7377.00	-771.28	9419.71	1450990.28	3233227.88	40.568337°N	104.660491°W
- plan hits target center							

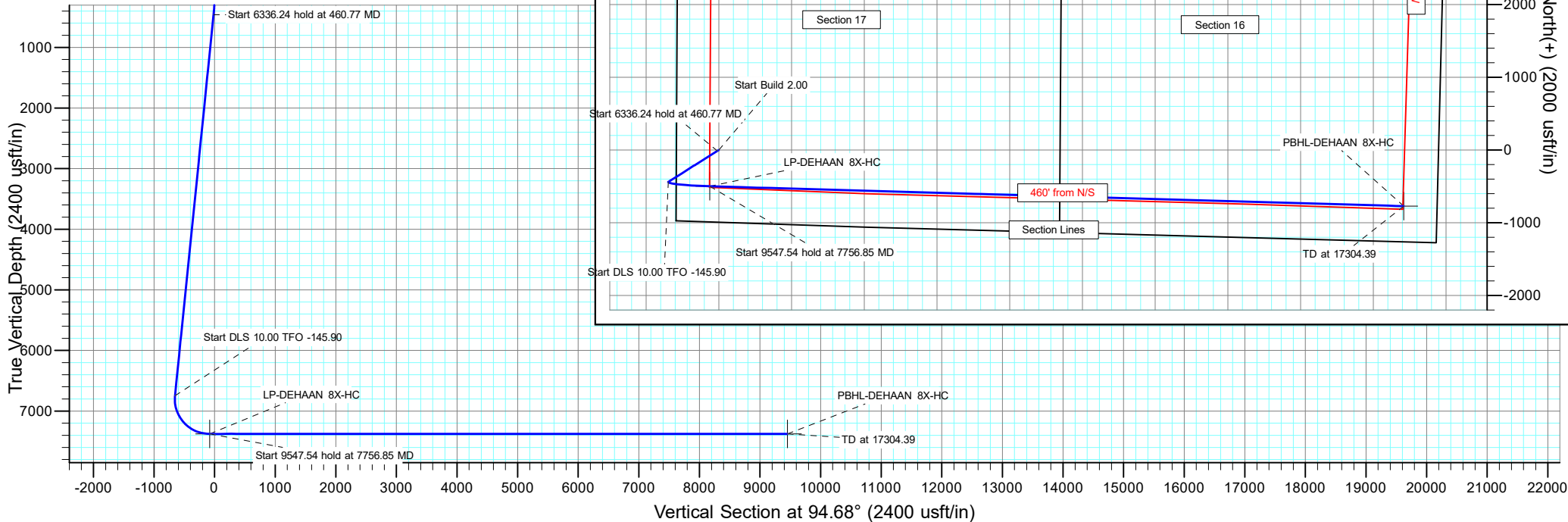
PROJECT DETAILS: WELD COUNTY

Geodetic System: US State Plane 1983  
Datum: North American Datum 1983  
Ellipsoid: GRS 1980  
Zone: Colorado Northern Zone  
System Datum: Mean Sea Level

FORMATION TOP DETAILS

No formation data is available

SHL:  
991' FSL, 581' FWL  
Sec 17-T7N-R65W  
  
LP:  
490' FSL, 460' FWL  
Sec 17-T7N-R65W  
  
BHL:  
491' FSL, 460' FEL  
Sec 16-T7N-R65W



## Planning Report

<b>Database:</b>	EDM 5000.16 Single User Db	<b>Local Co-ordinate Reference:</b>	Well DEHAAN 8X-HC-16-07-65
<b>Company:</b>	BAYSWATER EXPLORATION & PRODUCTION	<b>TVD Reference:</b>	KB 23' @ 4929.00usft
<b>Project:</b>	WELD COUNTY	<b>MD Reference:</b>	KB 23' @ 4929.00usft
<b>Site:</b>	SEC 17-T7N-R65W	<b>North Reference:</b>	True
<b>Well:</b>	DEHAAN 8X-HC-16-07-65	<b>Survey Calculation Method:</b>	Minimum Curvature
<b>Wellbore:</b>	OWB		
<b>Design:</b>	PROPOSAL 1		

<b>Project</b>	WELD COUNTY		
<b>Map System:</b>	US State Plane 1983	<b>System Datum:</b>	Mean Sea Level
<b>Geo Datum:</b>	North American Datum 1983		
<b>Map Zone:</b>	Colorado Northern Zone		Using geodetic scale factor

<b>Site</b>	SEC 17-T7N-R65W		
<b>Site Position:</b>		<b>Northing:</b>	1,450,698.32 usft
<b>From:</b>	Lat/Long	<b>Easting:</b>	3,223,224.19 usft
<b>Position Uncertainty:</b>	0.00 usft	<b>Slot Radius:</b>	13.200 in
		<b>Latitude:</b>	40.567790°N
		<b>Longitude:</b>	104.696507°W

<b>Well</b>	DEHAAN 8X-HC-16-07-65		
<b>Well Position</b>	<b>+N/-S</b>	0.00 usft	<b>Northing:</b> 1,451,675.94 usft
	<b>+E/-W</b>	0.00 usft	<b>Easting:</b> 3,223,801.82 usft
<b>Position Uncertainty</b>	0.00 usft	<b>Wellhead Elevation:</b>	usft
<b>Grid Convergence:</b>	0.52 °	<b>Ground Level:</b>	4,906.00 usft

<b>Wellbore</b>	OWB		
<b>Magnetics</b>	<b>Model Name</b>	<b>Sample Date</b>	<b>Declination (°)</b>
	IGRF2020	11/9/2022	7.68
			<b>Dip Angle (°)</b>
			66.74
			<b>Field Strength (nT)</b>
			51,901.18202358

<b>Design</b>	PROPOSAL 1		
<b>Audit Notes:</b>			
<b>Version:</b>	<b>Phase:</b>	PROTOTYPE	<b>Tie On Depth:</b> 0.00
<b>Vertical Section:</b>	<b>Depth From (TVD) (usft)</b>	<b>+N/-S (usft)</b>	<b>+E/-W (usft)</b>
	0.00	0.00	0.00
			<b>Direction (°)</b>
			94.68

<b>Plan Survey Tool Program</b>	<b>Date</b>	11/17/2022		
<b>Depth From (usft)</b>	<b>Depth To (usft)</b>	<b>Survey (Wellbore)</b>	<b>Tool Name</b>	<b>Remarks</b>
1	0.00	17,304.39	PROPOSAL 1 (OWB)	MWD
				OWSG MWD - Standard

<b>Plan Sections</b>										
<b>Measured Depth (usft)</b>	<b>Inclination (°)</b>	<b>Azimuth (°)</b>	<b>Vertical Depth (usft)</b>	<b>+N/-S (usft)</b>	<b>+E/-W (usft)</b>	<b>Dogleg Rate (°/100ft)</b>	<b>Build Rate (°/100ft)</b>	<b>Turn Rate (°/100ft)</b>	<b>TFO (°)</b>	<b>Target</b>
0.00	0.00	0.00	0.00	0.00	0.00	0.00	0.00	0.00	0.00	
100.00	0.00	0.00	100.00	0.00	0.00	0.00	0.00	0.00	0.00	
460.77	7.22	237.75	459.82	-12.11	-19.19	2.00	2.00	0.00	237.75	
6,797.01	7.22	237.75	6,745.88	-436.79	-692.23	0.00	0.00	0.00	0.00	
7,756.85	90.00	91.64	7,377.00	-497.66	-123.91	10.00	8.62	-15.22	-145.90	LP-DEHAAN 8X-HC
17,304.39	90.00	91.64	7,377.00	-771.28	9,419.71	0.00	0.00	0.00	0.00	PBHL-DEHAAN 8X-H

# Planning Report

<b>Database:</b>	EDM 5000.16 Single User Db	<b>Local Co-ordinate Reference:</b>	Well DEHAAN 8X-HC-16-07-65
<b>Company:</b>	BAYSWATER EXPLORATION & PRODUCTION	<b>TVD Reference:</b>	KB 23' @ 4929.00usft
<b>Project:</b>	WELD COUNTY	<b>MD Reference:</b>	KB 23' @ 4929.00usft
<b>Site:</b>	SEC 17-T7N-R65W	<b>North Reference:</b>	True
<b>Well:</b>	DEHAAN 8X-HC-16-07-65	<b>Survey Calculation Method:</b>	Minimum Curvature
<b>Wellbore:</b>	OWB		
<b>Design:</b>	PROPOSAL 1		

Planned Survey									
Measured Depth (usft)	Inclination (°)	Azimuth (°)	Vertical Depth (usft)	+N/-S (usft)	+E/-W (usft)	Vertical Section (usft)	Dogleg Rate (°/100ft)	Build Rate (°/100ft)	Turn Rate (°/100ft)
0.00	0.00	0.00	0.00	0.00	0.00	0.00	0.00	0.00	0.00
100.00	0.00	0.00	100.00	0.00	0.00	0.00	0.00	0.00	0.00
Start Build 2.00									
200.00	2.00	237.75	199.98	-0.93	-1.48	-1.39	2.00	2.00	0.00
300.00	4.00	237.75	299.84	-3.72	-5.90	-5.58	2.00	2.00	0.00
400.00	6.00	237.75	399.45	-8.37	-13.27	-12.54	2.00	2.00	0.00
460.77	7.22	237.75	459.82	-12.11	-19.19	-18.13	2.00	2.00	0.00
Start 6336.24 hold at 460.77 MD									
500.00	7.22	237.75	498.74	-14.74	-23.35	-22.07	0.00	0.00	0.00
600.00	7.22	237.75	597.94	-21.44	-33.98	-32.11	0.00	0.00	0.00
700.00	7.22	237.75	697.15	-28.14	-44.60	-42.15	0.00	0.00	0.00
800.00	7.22	237.75	796.36	-34.84	-55.22	-52.19	0.00	0.00	0.00
900.00	7.22	237.75	895.57	-41.55	-65.84	-62.23	0.00	0.00	0.00
1,000.00	7.22	237.75	994.78	-48.25	-76.46	-72.27	0.00	0.00	0.00
1,100.00	7.22	237.75	1,093.99	-54.95	-87.09	-82.31	0.00	0.00	0.00
1,200.00	7.22	237.75	1,193.19	-61.65	-97.71	-92.35	0.00	0.00	0.00
1,300.00	7.22	237.75	1,292.40	-68.35	-108.33	-102.39	0.00	0.00	0.00
1,400.00	7.22	237.75	1,391.61	-75.06	-118.95	-112.43	0.00	0.00	0.00
1,500.00	7.22	237.75	1,490.82	-81.76	-129.58	-122.47	0.00	0.00	0.00
1,600.00	7.22	237.75	1,590.03	-88.46	-140.20	-132.51	0.00	0.00	0.00
1,700.00	7.22	237.75	1,689.23	-95.16	-150.82	-142.55	0.00	0.00	0.00
1,800.00	7.22	237.75	1,788.44	-101.87	-161.44	-152.59	0.00	0.00	0.00
1,900.00	7.22	237.75	1,887.65	-108.57	-172.06	-162.63	0.00	0.00	0.00
2,000.00	7.22	237.75	1,986.86	-115.27	-182.69	-172.67	0.00	0.00	0.00
2,100.00	7.22	237.75	2,086.07	-121.97	-193.31	-182.71	0.00	0.00	0.00
2,200.00	7.22	237.75	2,185.27	-128.68	-203.93	-192.75	0.00	0.00	0.00
2,300.00	7.22	237.75	2,284.48	-135.38	-214.55	-202.79	0.00	0.00	0.00
2,400.00	7.22	237.75	2,383.69	-142.08	-225.17	-212.83	0.00	0.00	0.00
2,500.00	7.22	237.75	2,482.90	-148.78	-235.80	-222.87	0.00	0.00	0.00
2,600.00	7.22	237.75	2,582.11	-155.49	-246.42	-232.91	0.00	0.00	0.00
2,700.00	7.22	237.75	2,681.31	-162.19	-257.04	-242.95	0.00	0.00	0.00
2,800.00	7.22	237.75	2,780.52	-168.89	-267.66	-252.99	0.00	0.00	0.00
2,900.00	7.22	237.75	2,879.73	-175.59	-278.29	-263.03	0.00	0.00	0.00
3,000.00	7.22	237.75	2,978.94	-182.30	-288.91	-273.07	0.00	0.00	0.00
3,100.00	7.22	237.75	3,078.15	-189.00	-299.53	-283.11	0.00	0.00	0.00
3,200.00	7.22	237.75	3,177.36	-195.70	-310.15	-293.15	0.00	0.00	0.00
3,300.00	7.22	237.75	3,276.56	-202.40	-320.77	-303.19	0.00	0.00	0.00
3,400.00	7.22	237.75	3,375.77	-209.10	-331.40	-313.23	0.00	0.00	0.00
3,500.00	7.22	237.75	3,474.98	-215.81	-342.02	-323.27	0.00	0.00	0.00
3,600.00	7.22	237.75	3,574.19	-222.51	-352.64	-333.31	0.00	0.00	0.00
3,700.00	7.22	237.75	3,673.40	-229.21	-363.26	-343.35	0.00	0.00	0.00
3,800.00	7.22	237.75	3,772.60	-235.91	-373.89	-353.39	0.00	0.00	0.00
3,900.00	7.22	237.75	3,871.81	-242.62	-384.51	-363.43	0.00	0.00	0.00
4,000.00	7.22	237.75	3,971.02	-249.32	-395.13	-373.47	0.00	0.00	0.00
4,100.00	7.22	237.75	4,070.23	-256.02	-405.75	-383.51	0.00	0.00	0.00
4,200.00	7.22	237.75	4,169.44	-262.72	-416.37	-393.54	0.00	0.00	0.00
4,300.00	7.22	237.75	4,268.64	-269.43	-427.00	-403.58	0.00	0.00	0.00
4,400.00	7.22	237.75	4,367.85	-276.13	-437.62	-413.62	0.00	0.00	0.00
4,500.00	7.22	237.75	4,467.06	-282.83	-448.24	-423.66	0.00	0.00	0.00
4,600.00	7.22	237.75	4,566.27	-289.53	-458.86	-433.70	0.00	0.00	0.00
4,700.00	7.22	237.75	4,665.48	-296.24	-469.48	-443.74	0.00	0.00	0.00
4,800.00	7.22	237.75	4,764.68	-302.94	-480.11	-453.78	0.00	0.00	0.00
4,900.00	7.22	237.75	4,863.89	-309.64	-490.73	-463.82	0.00	0.00	0.00

# Planning Report

<b>Database:</b>	EDM 5000.16 Single User Db	<b>Local Co-ordinate Reference:</b>	Well DEHAAN 8X-HC-16-07-65
<b>Company:</b>	BAYSWATER EXPLORATION & PRODUCTION	<b>TVD Reference:</b>	KB 23' @ 4929.00usft
<b>Project:</b>	WELD COUNTY	<b>MD Reference:</b>	KB 23' @ 4929.00usft
<b>Site:</b>	SEC 17-T7N-R65W	<b>North Reference:</b>	True
<b>Well:</b>	DEHAAN 8X-HC-16-07-65	<b>Survey Calculation Method:</b>	Minimum Curvature
<b>Wellbore:</b>	OWB		
<b>Design:</b>	PROPOSAL 1		

Planned Survey										
Measured Depth (usft)	Inclination (°)	Azimuth (°)	Vertical Depth (usft)	+N/-S (usft)	+E/-W (usft)	Vertical Section (usft)	Dogleg Rate (°/100ft)	Build Rate (°/100ft)	Turn Rate (°/100ft)	
5,000.00	7.22	237.75	4,963.10	-316.34	-501.35	-473.86	0.00	0.00	0.00	
5,100.00	7.22	237.75	5,062.31	-323.05	-511.97	-483.90	0.00	0.00	0.00	
5,200.00	7.22	237.75	5,161.52	-329.75	-522.60	-493.94	0.00	0.00	0.00	
5,300.00	7.22	237.75	5,260.73	-336.45	-533.22	-503.98	0.00	0.00	0.00	
5,400.00	7.22	237.75	5,359.93	-343.15	-543.84	-514.02	0.00	0.00	0.00	
5,500.00	7.22	237.75	5,459.14	-349.86	-554.46	-524.06	0.00	0.00	0.00	
5,600.00	7.22	237.75	5,558.35	-356.56	-565.08	-534.10	0.00	0.00	0.00	
5,700.00	7.22	237.75	5,657.56	-363.26	-575.71	-544.14	0.00	0.00	0.00	
5,800.00	7.22	237.75	5,756.77	-369.96	-586.33	-554.18	0.00	0.00	0.00	
5,900.00	7.22	237.75	5,855.97	-376.66	-596.95	-564.22	0.00	0.00	0.00	
6,000.00	7.22	237.75	5,955.18	-383.37	-607.57	-574.26	0.00	0.00	0.00	
6,100.00	7.22	237.75	6,054.39	-390.07	-618.19	-584.30	0.00	0.00	0.00	
6,200.00	7.22	237.75	6,153.60	-396.77	-628.82	-594.34	0.00	0.00	0.00	
6,300.00	7.22	237.75	6,252.81	-403.47	-639.44	-604.38	0.00	0.00	0.00	
6,400.00	7.22	237.75	6,352.01	-410.18	-650.06	-614.42	0.00	0.00	0.00	
6,500.00	7.22	237.75	6,451.22	-416.88	-660.68	-624.46	0.00	0.00	0.00	
6,600.00	7.22	237.75	6,550.43	-423.58	-671.31	-634.50	0.00	0.00	0.00	
6,700.00	7.22	237.75	6,649.64	-430.28	-681.93	-644.54	0.00	0.00	0.00	
6,797.01	7.22	237.75	6,745.88	-436.79	-692.23	-654.28	0.00	0.00	0.00	
Start DLS 10.00 TFO -145.90										
6,800.00	6.97	236.37	6,748.85	-436.99	-692.54	-654.57	10.00	-8.21	-46.21	
6,900.00	5.91	134.67	6,848.47	-443.98	-693.94	-655.39	10.00	-1.06	-101.70	
7,000.00	14.86	107.07	6,946.78	-451.38	-677.98	-638.88	10.00	8.95	-27.60	
7,100.00	24.63	100.50	7,040.80	-458.97	-645.15	-605.54	10.00	9.77	-6.57	
7,200.00	34.52	97.53	7,127.66	-466.50	-596.45	-556.39	10.00	9.89	-2.97	
7,300.00	44.46	95.77	7,204.74	-473.75	-533.35	-492.91	10.00	9.94	-1.77	
7,400.00	54.42	94.54	7,269.69	-480.50	-457.78	-417.04	10.00	9.96	-1.23	
7,500.00	64.38	93.58	7,320.53	-486.55	-372.03	-331.08	10.00	9.97	-0.96	
7,600.00	74.35	92.78	7,355.72	-491.71	-278.70	-237.64	10.00	9.97	-0.81	
7,700.00	84.33	92.04	7,374.19	-495.83	-180.64	-139.57	10.00	9.97	-0.73	
7,756.85	90.00	91.64	7,377.00	-497.66	-123.91	-82.88	10.00	9.98	-0.71	
Start 9547.54 hold at 7756.85 MD										
7,800.00	90.00	91.64	7,377.00	-498.89	-80.78	-39.80	0.00	0.00	0.00	
7,900.00	90.00	91.64	7,377.00	-501.76	19.18	60.06	0.00	0.00	0.00	
8,000.00	90.00	91.64	7,377.00	-504.62	119.14	159.92	0.00	0.00	0.00	
8,100.00	90.00	91.64	7,377.00	-507.49	219.10	259.78	0.00	0.00	0.00	
8,200.00	90.00	91.64	7,377.00	-510.36	319.06	359.64	0.00	0.00	0.00	
8,300.00	90.00	91.64	7,377.00	-513.22	419.02	459.50	0.00	0.00	0.00	
8,400.00	90.00	91.64	7,377.00	-516.09	518.98	559.36	0.00	0.00	0.00	
8,500.00	90.00	91.64	7,377.00	-518.95	618.93	659.22	0.00	0.00	0.00	
8,600.00	90.00	91.64	7,377.00	-521.82	718.89	759.08	0.00	0.00	0.00	
8,700.00	90.00	91.64	7,377.00	-524.69	818.85	858.94	0.00	0.00	0.00	
8,800.00	90.00	91.64	7,377.00	-527.55	918.81	958.80	0.00	0.00	0.00	
8,900.00	90.00	91.64	7,377.00	-530.42	1,018.77	1,058.66	0.00	0.00	0.00	
9,000.00	90.00	91.64	7,377.00	-533.28	1,118.73	1,158.52	0.00	0.00	0.00	
9,100.00	90.00	91.64	7,377.00	-536.15	1,218.69	1,258.38	0.00	0.00	0.00	
9,200.00	90.00	91.64	7,377.00	-539.02	1,318.65	1,358.24	0.00	0.00	0.00	
9,300.00	90.00	91.64	7,377.00	-541.88	1,418.61	1,458.10	0.00	0.00	0.00	
9,400.00	90.00	91.64	7,377.00	-544.75	1,518.57	1,557.96	0.00	0.00	0.00	
9,500.00	90.00	91.64	7,377.00	-547.61	1,618.52	1,657.81	0.00	0.00	0.00	
9,600.00	90.00	91.64	7,377.00	-550.48	1,718.48	1,757.67	0.00	0.00	0.00	
9,700.00	90.00	91.64	7,377.00	-553.35	1,818.44	1,857.53	0.00	0.00	0.00	
9,800.00	90.00	91.64	7,377.00	-556.21	1,918.40	1,957.39	0.00	0.00	0.00	

## Planning Report

<b>Database:</b>	EDM 5000.16 Single User Db	<b>Local Co-ordinate Reference:</b>	Well DEHAAN 8X-HC-16-07-65
<b>Company:</b>	BAYSWATER EXPLORATION & PRODUCTION	<b>TVD Reference:</b>	KB 23' @ 4929.00usft
<b>Project:</b>	WELD COUNTY	<b>MD Reference:</b>	KB 23' @ 4929.00usft
<b>Site:</b>	SEC 17-T7N-R65W	<b>North Reference:</b>	True
<b>Well:</b>	DEHAAN 8X-HC-16-07-65	<b>Survey Calculation Method:</b>	Minimum Curvature
<b>Wellbore:</b>	OWB		
<b>Design:</b>	PROPOSAL 1		

Planned Survey										
Measured Depth (usft)	Inclination (°)	Azimuth (°)	Vertical Depth (usft)	+N/-S (usft)	+E/-W (usft)	Vertical Section (usft)	Dogleg Rate (°/100ft)	Build Rate (°/100ft)	Turn Rate (°/100ft)	
9,900.00	90.00	91.64	7,377.00	-559.08	2,018.36	2,057.25	0.00	0.00	0.00	
10,000.00	90.00	91.64	7,377.00	-561.94	2,118.32	2,157.11	0.00	0.00	0.00	
10,100.00	90.00	91.64	7,377.00	-564.81	2,218.28	2,256.97	0.00	0.00	0.00	
10,200.00	90.00	91.64	7,377.00	-567.67	2,318.24	2,356.83	0.00	0.00	0.00	
10,300.00	90.00	91.64	7,377.00	-570.54	2,418.20	2,456.69	0.00	0.00	0.00	
10,400.00	90.00	91.64	7,377.00	-573.41	2,518.15	2,556.55	0.00	0.00	0.00	
10,500.00	90.00	91.64	7,377.00	-576.27	2,618.11	2,656.41	0.00	0.00	0.00	
10,600.00	90.00	91.64	7,377.00	-579.14	2,718.07	2,756.27	0.00	0.00	0.00	
10,700.00	90.00	91.64	7,377.00	-582.00	2,818.03	2,856.13	0.00	0.00	0.00	
10,800.00	90.00	91.64	7,377.00	-584.87	2,917.99	2,955.99	0.00	0.00	0.00	
10,900.00	90.00	91.64	7,377.00	-587.74	3,017.95	3,055.85	0.00	0.00	0.00	
11,000.00	90.00	91.64	7,377.00	-590.60	3,117.91	3,155.71	0.00	0.00	0.00	
11,100.00	90.00	91.64	7,377.00	-593.47	3,217.87	3,255.57	0.00	0.00	0.00	
11,200.00	90.00	91.64	7,377.00	-596.33	3,317.83	3,355.42	0.00	0.00	0.00	
11,300.00	90.00	91.64	7,377.00	-599.20	3,417.78	3,455.28	0.00	0.00	0.00	
11,400.00	90.00	91.64	7,377.00	-602.07	3,517.74	3,555.14	0.00	0.00	0.00	
11,500.00	90.00	91.64	7,377.00	-604.93	3,617.70	3,655.00	0.00	0.00	0.00	
11,600.00	90.00	91.64	7,377.00	-607.80	3,717.66	3,754.86	0.00	0.00	0.00	
11,700.00	90.00	91.64	7,377.00	-610.66	3,817.62	3,854.72	0.00	0.00	0.00	
11,800.00	90.00	91.64	7,377.00	-613.53	3,917.58	3,954.58	0.00	0.00	0.00	
11,900.00	90.00	91.64	7,377.00	-616.40	4,017.54	4,054.44	0.00	0.00	0.00	
12,000.00	90.00	91.64	7,377.00	-619.26	4,117.50	4,154.30	0.00	0.00	0.00	
12,100.00	90.00	91.64	7,377.00	-622.13	4,217.46	4,254.16	0.00	0.00	0.00	
12,200.00	90.00	91.64	7,377.00	-624.99	4,317.42	4,354.02	0.00	0.00	0.00	
12,300.00	90.00	91.64	7,377.00	-627.86	4,417.37	4,453.88	0.00	0.00	0.00	
12,400.00	90.00	91.64	7,377.00	-630.73	4,517.33	4,553.74	0.00	0.00	0.00	
12,500.00	90.00	91.64	7,377.00	-633.59	4,617.29	4,653.60	0.00	0.00	0.00	
12,600.00	90.00	91.64	7,377.00	-636.46	4,717.25	4,753.46	0.00	0.00	0.00	
12,700.00	90.00	91.64	7,377.00	-639.32	4,817.21	4,853.32	0.00	0.00	0.00	
12,800.00	90.00	91.64	7,377.00	-642.19	4,917.17	4,953.17	0.00	0.00	0.00	
12,900.00	90.00	91.64	7,377.00	-645.06	5,017.13	5,053.03	0.00	0.00	0.00	
13,000.00	90.00	91.64	7,377.00	-647.92	5,117.09	5,152.89	0.00	0.00	0.00	
13,100.00	90.00	91.64	7,377.00	-650.79	5,217.05	5,252.75	0.00	0.00	0.00	
13,200.00	90.00	91.64	7,377.00	-653.65	5,317.00	5,352.61	0.00	0.00	0.00	
13,300.00	90.00	91.64	7,377.00	-656.52	5,416.96	5,452.47	0.00	0.00	0.00	
13,400.00	90.00	91.64	7,377.00	-659.39	5,516.92	5,552.33	0.00	0.00	0.00	
13,500.00	90.00	91.64	7,377.00	-662.25	5,616.88	5,652.19	0.00	0.00	0.00	
13,600.00	90.00	91.64	7,377.00	-665.12	5,716.84	5,752.05	0.00	0.00	0.00	
13,700.00	90.00	91.64	7,377.00	-667.98	5,816.80	5,851.91	0.00	0.00	0.00	
13,800.00	90.00	91.64	7,377.00	-670.85	5,916.76	5,951.77	0.00	0.00	0.00	
13,900.00	90.00	91.64	7,377.00	-673.71	6,016.72	6,051.63	0.00	0.00	0.00	
14,000.00	90.00	91.64	7,377.00	-676.58	6,116.68	6,151.49	0.00	0.00	0.00	
14,100.00	90.00	91.64	7,377.00	-679.45	6,216.63	6,251.35	0.00	0.00	0.00	
14,200.00	90.00	91.64	7,377.00	-682.31	6,316.59	6,351.21	0.00	0.00	0.00	
14,300.00	90.00	91.64	7,377.00	-685.18	6,416.55	6,451.07	0.00	0.00	0.00	
14,400.00	90.00	91.64	7,377.00	-688.04	6,516.51	6,550.93	0.00	0.00	0.00	
14,500.00	90.00	91.64	7,377.00	-690.91	6,616.47	6,650.78	0.00	0.00	0.00	
14,600.00	90.00	91.64	7,377.00	-693.78	6,716.43	6,750.64	0.00	0.00	0.00	
14,700.00	90.00	91.64	7,377.00	-696.64	6,816.39	6,850.50	0.00	0.00	0.00	
14,800.00	90.00	91.64	7,377.00	-699.51	6,916.35	6,950.36	0.00	0.00	0.00	
14,900.00	90.00	91.64	7,377.00	-702.37	7,016.31	7,050.22	0.00	0.00	0.00	
15,000.00	90.00	91.64	7,377.00	-705.24	7,116.27	7,150.08	0.00	0.00	0.00	
15,100.00	90.00	91.64	7,377.00	-708.11	7,216.22	7,249.94	0.00	0.00	0.00	

## Planning Report

<b>Database:</b>	EDM 5000.16 Single User Db	<b>Local Co-ordinate Reference:</b>	Well DEHAAN 8X-HC-16-07-65
<b>Company:</b>	BAYSWATER EXPLORATION & PRODUCTION	<b>TVD Reference:</b>	KB 23' @ 4929.00usft
<b>Project:</b>	WELD COUNTY	<b>MD Reference:</b>	KB 23' @ 4929.00usft
<b>Site:</b>	SEC 17-T7N-R65W	<b>North Reference:</b>	True
<b>Well:</b>	DEHAAN 8X-HC-16-07-65	<b>Survey Calculation Method:</b>	Minimum Curvature
<b>Wellbore:</b>	OWB		
<b>Design:</b>	PROPOSAL 1		

Planned Survey										
Measured Depth (usft)	Inclination (°)	Azimuth (°)	Vertical Depth (usft)	+N/-S (usft)	+E/-W (usft)	Vertical Section (usft)	Dogleg Rate (°/100ft)	Build Rate (°/100ft)	Turn Rate (°/100ft)	
15,200.00	90.00	91.64	7,377.00	-710.97	7,316.18	7,349.80	0.00	0.00	0.00	
15,300.00	90.00	91.64	7,377.00	-713.84	7,416.14	7,449.66	0.00	0.00	0.00	
15,400.00	90.00	91.64	7,377.00	-716.70	7,516.10	7,549.52	0.00	0.00	0.00	
15,500.00	90.00	91.64	7,377.00	-719.57	7,616.06	7,649.38	0.00	0.00	0.00	
15,600.00	90.00	91.64	7,377.00	-722.44	7,716.02	7,749.24	0.00	0.00	0.00	
15,700.00	90.00	91.64	7,377.00	-725.30	7,815.98	7,849.10	0.00	0.00	0.00	
15,800.00	90.00	91.64	7,377.00	-728.17	7,915.94	7,948.96	0.00	0.00	0.00	
15,900.00	90.00	91.64	7,377.00	-731.03	8,015.90	8,048.82	0.00	0.00	0.00	
16,000.00	90.00	91.64	7,377.00	-733.90	8,115.85	8,148.68	0.00	0.00	0.00	
16,100.00	90.00	91.64	7,377.00	-736.77	8,215.81	8,248.54	0.00	0.00	0.00	
16,200.00	90.00	91.64	7,377.00	-739.63	8,315.77	8,348.39	0.00	0.00	0.00	
16,300.00	90.00	91.64	7,377.00	-742.50	8,415.73	8,448.25	0.00	0.00	0.00	
16,400.00	90.00	91.64	7,377.00	-745.36	8,515.69	8,548.11	0.00	0.00	0.00	
16,500.00	90.00	91.64	7,377.00	-748.23	8,615.65	8,647.97	0.00	0.00	0.00	
16,600.00	90.00	91.64	7,377.00	-751.10	8,715.61	8,747.83	0.00	0.00	0.00	
16,700.00	90.00	91.64	7,377.00	-753.96	8,815.57	8,847.69	0.00	0.00	0.00	
16,800.00	90.00	91.64	7,377.00	-756.83	8,915.53	8,947.55	0.00	0.00	0.00	
16,900.00	90.00	91.64	7,377.00	-759.69	9,015.48	9,047.41	0.00	0.00	0.00	
17,000.00	90.00	91.64	7,377.00	-762.56	9,115.44	9,147.27	0.00	0.00	0.00	
17,100.00	90.00	91.64	7,377.00	-765.42	9,215.40	9,247.13	0.00	0.00	0.00	
17,200.00	90.00	91.64	7,377.00	-768.29	9,315.36	9,346.99	0.00	0.00	0.00	
17,300.00	90.00	91.64	7,377.00	-771.16	9,415.32	9,446.85	0.00	0.00	0.00	
17,304.39	90.00	91.64	7,377.00	-771.28	9,419.71	9,451.23	0.00	0.00	0.00	
TD at 17304.39										

Design Targets									
Target Name	Dip Angle (°)	Dip Dir. (°)	TVD (usft)	+N/-S (usft)	+E/-W (usft)	Northing (usft)	Easting (usft)	Latitude	Longitude
PBHL-DEHAAN 8X-HC - hit/miss target - Shape - Point	0.00	0.00	7,377.00	-771.28	9,419.71	1,450,990.28	3,233,227.88	40.568337°N	104.660491°W
LP-DEHAAN 8X-HC - plan hits target center - Point	0.00	0.00	7,377.00	-497.66	-123.91	1,451,177.19	3,223,682.44	40.569093°N	104.694842°W

Plan Annotations					
Measured Depth (usft)	Vertical Depth (usft)	Local Coordinates			
		+N/-S (usft)	+E/-W (usft)	Comment	
100.00	100.00	0.00	0.00	Start Build 2.00	
460.77	459.82	-12.11	-19.19	Start 6336.24 hold at 460.77 MD	
6,797.01	6,745.88	-436.79	-692.23	Start DLS 10.00 TFO -145.90	
7,756.85	7,377.00	-497.66	-123.91	Start 9547.54 hold at 7756.85 MD	
17,304.39	7,377.00	-771.28	9,419.71	TD at 17304.39	