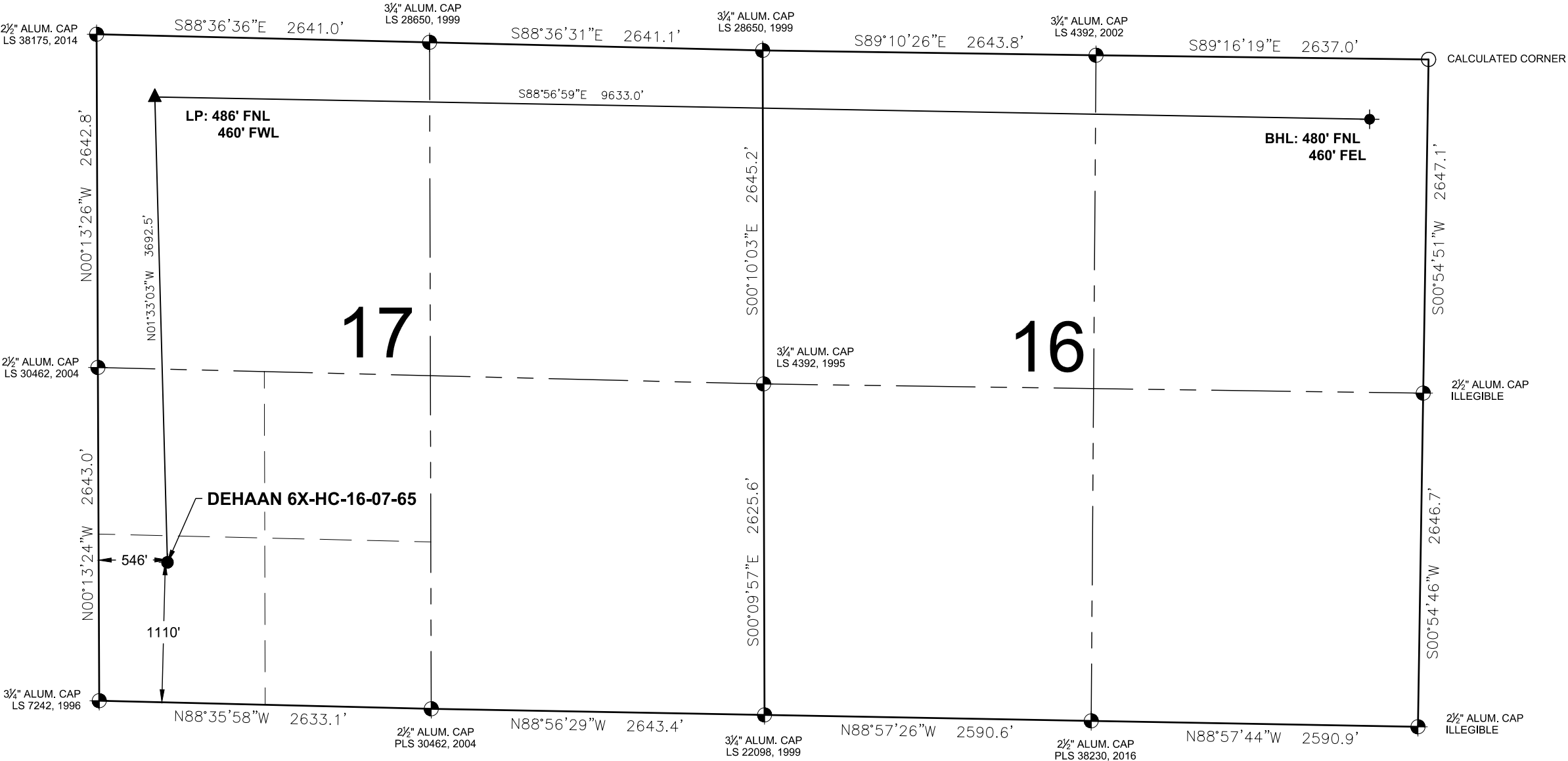


DEHAAN 6X-HC-16-07-65
WELL LOCATION EXHIBIT



WELL DEHAAN 6X-HC-16-07-65 TO BE
LOCATED 1110' FSL & 546' FWL

WELL BORE COORDINATES
(NAD83)

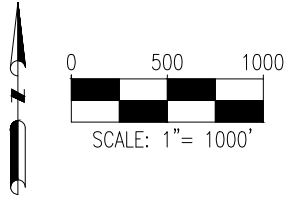
SURFACE LOCATION:
GROUND ELEVATION=4906'
LATITUDE:40.570788°N
LONGITUDE:104.694523°W

LANDING POINT:
LATITUDE:40.580922°N
LONGITUDE:104.694762°W

BOTTOM HOLE:
LATITUDE:40.580192°N
LONGITUDE:104.660096°W

WELL NOTES:
BH LOCATION PROVIDED BY CLIENT.
LAND SURFACE USE - IRRIGATED CROP LAND
SEE LOCATION DRAWING FOR ADDITIONAL IMPROVEMENTS
WITHIN 2000'

PDOP=1.5
GPS OPERATOR: STEVE ROERIG



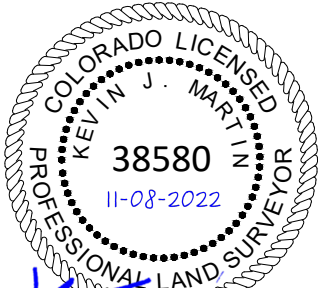
NOTES:

1. THIS FIELD SURVEY CONFORMS TO THE MINIMUM STANDARDS SET BY THE COGCC, RULE NO. 215
2. ALL BEARINGS ARE GRID BEARINGS OF THE COLORADO STATE PLANE COORDINATE SYSTEM, NORTH ZONE, NORTH AMERICAN DATUM 1983/2011. THE LINEAL DIMENSIONS AS SHOWN HEREIN ARE GRID DISTANCES BASED UPON THE "U.S. SURVEY FOOT." TO DERIVE GROUND DISTANCES MULTIPLY SHOWN DISTANCE BY 1.00025756.
3. FIELD VERIFICATION OF MONUMENTS COMPLETED WITHIN 1 YEAR OF SIGNATURE DATE, UNLESS OTHERWISE NOTED.

LEGEND

- = EXISTING MONUMENT ▲ = LANDING POINT
○ = CALCULATED POSITION LP = LANDING POINT
● = PROPOSED WELL BHL = BOTTOM HOLE
⬮ = BOTTOM HOLE

I, KEVIN J. MARTIN, A LICENSED PROFESSIONAL LAND SURVEYOR IN THE STATE OF COLORADO, DO HEREBY STATE TO **BAYSWATER EXPLORATION & PRODUCTION, LLC** THAT THE WELL LOCATION EXHIBIT SHOWN HEREON WAS PREPARED BY ME OR UNDER MY DIRECT SUPERVISION AND THE DRAWING SHOWN HEREON ACCURATELY DEPICTS THE PROPOSED LOCATION OF THE WELL. THIS EXHIBIT MEETS THE REQUIREMENTS OF A GIS LAND POSITION AS DEFINED BY SECTION 38-51-109.3 C.R.S. AND AS SUCH PER SECTION 38-51-109.3 C.R.S. CANNOT BE RELIED UPON TO DETERMINE OWNERSHIP.



Kevin J. Martin

KEVIN J. MARTIN, PLS 38580
COLORADO LICENSED PROFESSIONAL LAND SURVEYOR
FOR AND ON BEHALF OF P.F.S., LLC
d.b.a. ASCENT GEOMATICS SOLUTIONS

NOTICE: ACCORDING TO COLORADO LAW YOU MUST COMMENCE ANY LEGAL ACTION BASED UPON ANY DEFECT IN THIS SURVEY WITHIN THREE YEARS AFTER YOU FIRST DISCOVER SUCH DEFECT. IN NO EVENT MAY ANY ACTION BASED UPON ANY DEFECT IN THIS SURVEY BE COMMENCED MORE THAN TEN YEARS FROM THIS SAID DATE OF THIS CERTIFICATION SHOWN HEREON.

SHEET 1 OF 1



8620 Wolff Court
Westminster, CO 80031
(303) 928-7128
www.ascentgeomatics.com

FIELD DATE:
10-29-22
DRAWING DATE:
11-02-22

BY:
HJL

CHECKED:
CSG

WELL NAME:
DEHAAN 6X-HC-16-07-65

SURFACE LOCATION:
SW 1/4 SW 1/4 SEC. 17, T7N, R65W, 6TH P.M.
WELD COUNTY, COLORADO

PREPARED FOR:



BAYSWATER
EXPLORATION & PRODUCTION, LLC