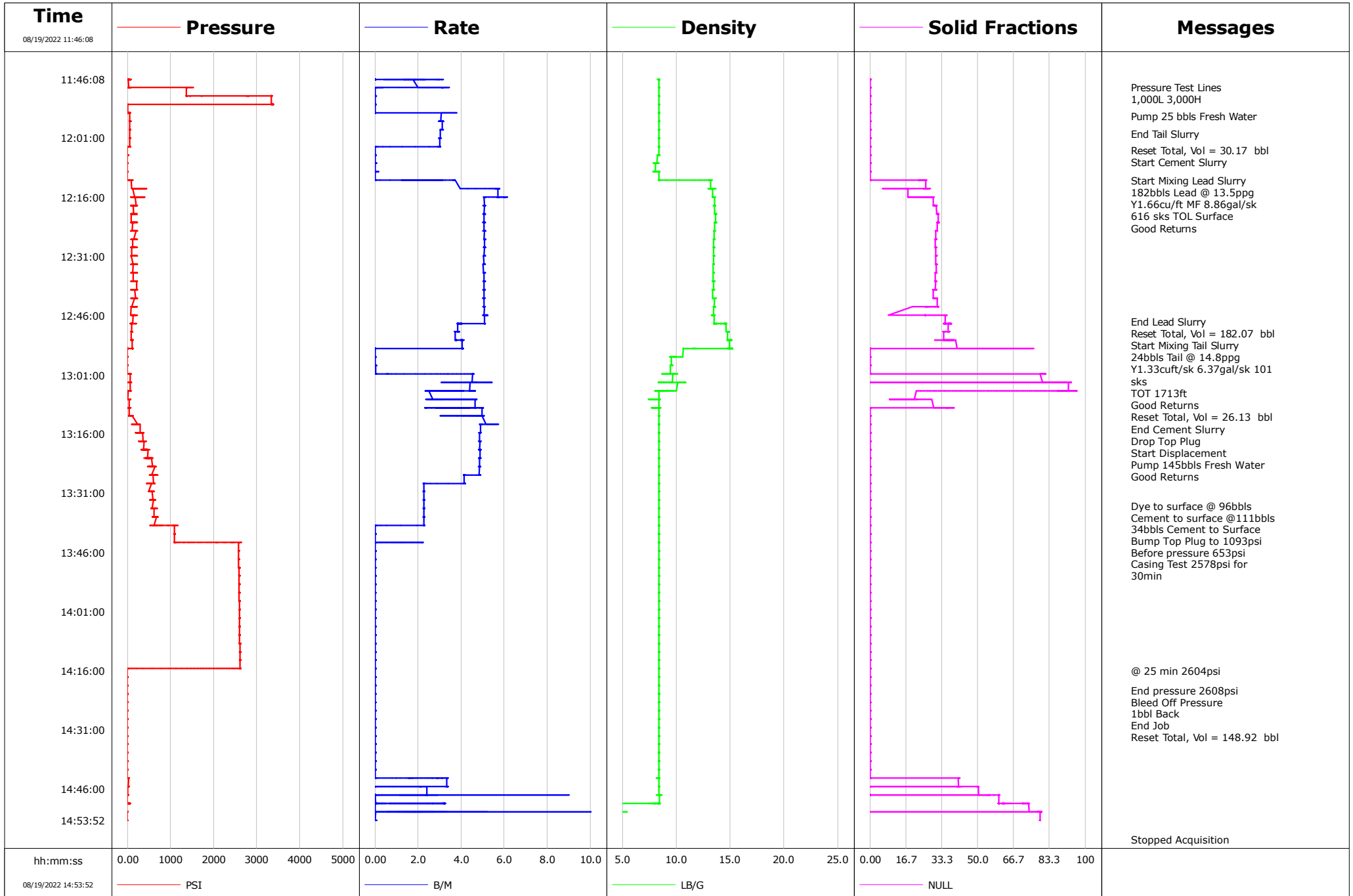


Well	Guttersen C28-775	Client	Chevron
Field	DJ	SIR No.	EP06-00029
Engineer	Jay Fales	Job Type	Surface
Country	United States	Job Date	08-19-2022



				Customer			Job Number		
				Chevron			EP06-00029		
Well		Location (legal)		Schlumberger Location			Job Start		
Gutterson C28-775		Kersey		Mathew Cleveland			Aug/19/2022		
Field		Formation Name/Type		Deviation		Bit Size		Well MD	
DJ				deg		13.5 in		1950.0 ft	
County		State/Province		BHP		BHST		BHCT	
Weld		Colorado		psi		115 degF		91 degF	
Well Master		API/UWI						Pore Press. Gradient	
0065878549		05-123-48938-00-00						lb/gal	
Rig Name		Drilled For		Service Via		Casing/Liner			
Precision #460		Oil & Gas		Land					
						Depth, ft		Size, in	
						1939.0		9.6	
						101.00		16.0	
						36.0		36.94	
						J55		BUTT	
						A-52A			
Offshore Zone		Well Class		Well Type					
		N/A		Development					
Drilling Fluid Type		Max. Density		Plastic Viscosity		Tubing/Drill Pipe			
		lb/gal		cP					
						T/D		Depth, ft	
								Size, in	
								Weight, lb/ft	
								Grade	
								Thread	
Service Line		Job Type							
Cementing		Surface							
Max. Allowed Tub. Press		Max. Allowed Ann. Press		WH Connection		Perforations/Open Hole			
0 psi		psi		Single Cement head					
						Top, ft		Bottom, ft	
						ft		ft	
								shot/ft	
								No. of Shots	
								Total Interval	
								ft	
								Diameter	
								in	
						Treat Down		Displacement	
						Casing		145.0 bbl	
						Packer Type		Packer Depth	
								ft	
						Tubing Vol.		Casing Vol.	
						bbl		148.0 bbl	
						Annular Vol.		Openhole Vol.	
						188.0 bbl		160.0 bbl	
Casing/Tubing Secured		1 Hole Vol. Circulated prior to Cement		Casing Tools			Squeeze Job		
<input type="checkbox"/>		<input checked="" type="checkbox"/>							
Lift Pressure		945 psi		Shoe Type		Guide		Squeeze Type	
Pipe Rotated		Pipe Reciprocated		Shoe Depth		1939.0 ft		Tool Type	
<input type="checkbox"/>		<input type="checkbox"/>							
No. Centralizers		Top Plugs		Bottom Plugs		Stage Tool Type		Tool Depth	
		1						ft	
Cement Head Type		Single		Stage Tool Depth		ft		Tail Pipe Size	
								in	
Job Scheduled For		Arrived on Location		Leave Location		Collar Type		Tail Pipe Depth	
Aug/19/2022 08:30		Aug/19/2022 08:20		Aug/19/2022 15:00		Float		ft	
						Collar Depth		Sqz. Total Vol.	
						1895.0 ft		bbl	
Date	Time 24-hr clock	Treating Pressure PSI	Flow Rate B/M	Density LB/G	Volume BBL	Message			
08/19/2022	11:46:08	13	0.0	8.39	0.0	Started Acquisition			
08/19/2022	11:46:08	13	0.0	8.38	0.0				
08/19/2022	11:46:08	12	0.0	8.39	0.0				
08/19/2022	11:46:08	13	0.0	8.39	0.0				
08/19/2022	11:46:08	13	0.0	8.39	0.0				
08/19/2022	11:46:08	13	0.0	8.39	0.0				
08/19/2022	11:46:08	13	0.0	8.38	0.0				
08/19/2022	11:46:08	13	0.0	8.39	0.0				
08/19/2022	11:46:08	13	0.0	8.39	0.0				
08/19/2022	11:46:08	13	0.0	8.39	0.0				
08/19/2022	11:46:08	13	0.0	8.39	0.0				
08/19/2022	11:46:08	13	0.0	8.39	0.0				
08/19/2022	11:46:08	13	0.0	8.39	0.0				
08/19/2022	11:46:08	13	0.0	8.39	0.0				
08/19/2022	11:46:08	13	0.0	8.39	0.0				
08/19/2022	11:46:08	12	0.0	8.38	0.0				
08/19/2022	11:46:08	13	0.0	8.39	0.0				
08/19/2022	11:46:08	13	0.0	8.39	0.0				
08/19/2022	11:46:08	13	0.0	8.39	0.0				
08/19/2022	11:46:08	13	0.0	8.39	0.0				
08/19/2022	11:46:08	12	0.0	8.39	0.0				
08/19/2022	11:46:08	12	0.0	8.39	0.0				

Well			Field		Job Start	Customer	Job Number
Gutterson C28-775			DJ		Aug/19/2022	Chevron	EP06-00029
Date	Time 24-hr clock	Treating Pressure PSI	Flow Rate B/M	Density LB/G	Volume BBL	Message	
08/19/2022	11:46:08	54	2.8	8.38	0.0		
08/19/2022	11:46:08	59	2.9	8.38	0.0		
08/19/2022	11:46:08	58	2.9	8.38	0.0		
08/19/2022	11:46:08	58	3.0	8.38	0.0		
08/19/2022	11:46:08	58	3.0	8.38	0.0		
08/19/2022	11:46:08	65	3.0	8.38	0.0		
08/19/2022	11:46:08	67	3.0	8.38	0.0		
08/19/2022	11:46:08	66	3.1	8.38	0.0		
08/19/2022	11:46:08	68	3.2	8.38	0.0		
08/19/2022	11:46:08	67	3.2	8.38	0.0		
08/19/2022	11:46:08	67	3.1	8.38	0.0		
08/19/2022	11:46:08	68	3.1	8.39	0.0		
08/19/2022	11:46:08	43	2.9	8.39	0.0		
08/19/2022	11:46:08	23	2.2	8.39	0.0		
08/19/2022	11:46:08	22	1.2	8.39	0.0		
08/19/2022	11:46:08	25	0.6	8.39	0.0		
08/19/2022	11:46:08	65	0.4	8.39	0.0		
08/19/2022	11:46:08	35	0.9	8.39	0.0		
08/19/2022	11:46:08	50	1.4	8.39	0.0		
08/19/2022	11:46:08	40	1.8	8.39	0.0		
08/19/2022	11:46:08	35	2.0	8.39	0.0		
08/19/2022	11:46:08	37	2.2	8.39	0.0		
08/19/2022	11:46:08	34	2.2	8.39	0.0		
08/19/2022	11:46:08	26	2.3	8.39	0.0		
08/19/2022	11:46:08	28	2.3	8.39	0.0		
08/19/2022	11:46:08	26	2.3	8.39	0.0		
08/19/2022	11:46:08	23	2.3	8.39	0.0		
08/19/2022	11:46:08	22	2.3	8.39	0.0		
08/19/2022	11:46:08	7	2.1	8.39	0.0		
08/19/2022	11:46:08	8	1.9	8.39	0.0		
08/19/2022	11:46:08	3	1.6	8.39	0.0		
08/19/2022	11:46:08	6	1.4	8.39	0.0		
08/19/2022	11:46:08	5	1.3	8.39	0.0		
08/19/2022	11:46:08	5	1.3	8.39	0.0		
08/19/2022	11:46:08	5	1.4	8.39	0.0		
08/19/2022	11:46:08	12	1.6	8.39	0.0		
08/19/2022	11:46:08	17	1.8	8.39	0.0		
08/19/2022	11:46:08	33	2.0	8.39	0.0		
08/19/2022	12:11:44	-1	0.0	8.39	0.0	182bbls Lead @ 13.5ppg	
08/19/2022	12:39:28	199	5.1	13.47	0.0		
08/19/2022	12:39:28	171	5.1	13.47	0.0		
08/19/2022	12:39:28	159	5.1	13.48	0.0		
08/19/2022	12:39:28	127	5.0	13.48	0.0		
08/19/2022	12:39:28	115	5.0	13.47	0.0		
08/19/2022	12:39:28	112	5.0	13.47	0.0		
08/19/2022	12:39:28	96	5.0	13.47	0.0		
08/19/2022	12:39:28	90	5.1	13.47	0.0		
08/19/2022	12:39:28	92	5.0	13.47	0.0		
08/19/2022	12:39:28	92	5.1	13.47	0.0		
08/19/2022	12:39:28	85	5.0	13.47	0.0		
08/19/2022	12:39:28	141	5.0	13.47	0.0		
08/19/2022	12:39:28	90	5.0	13.47	0.0		
08/19/2022	12:39:28	90	5.0	13.47	0.0		
08/19/2022	12:39:28	167	5.1	13.47	0.0		

Well Gutterson C28-775			Field DJ		Job Start Aug/19/2022	Customer Chevron	Job Number EP06-00029
Date	Time 24-hr clock	Treating Pressure PSI	Flow Rate B/M	Density LB/G	Volume BBL	Message	
08/19/2022	12:39:28	199	5.1	13.47	0.0		
08/19/2022	12:39:28	198	5.1	13.46	0.0		
08/19/2022	12:39:28	208	5.1	13.46	0.0		
08/19/2022	12:39:28	217	5.1	13.46	0.0		
08/19/2022	12:39:28	215	5.1	13.46	0.0		
08/19/2022	12:39:28	213	5.1	13.45	0.0		
08/19/2022	12:39:28	194	5.1	13.45	0.0		
08/19/2022	12:39:28	172	5.1	13.45	0.0		
08/19/2022	12:39:28	154	5.1	13.45	0.0		
08/19/2022	12:39:28	123	5.1	13.45	0.0		
08/19/2022	12:39:28	113	5.1	13.45	0.0		
08/19/2022	12:39:28	135	5.0	13.45	0.0		
08/19/2022	12:39:28	122	5.0	13.44	0.0		
08/19/2022	12:39:28	121	5.0	13.44	0.0		
08/19/2022	12:39:28	130	5.0	13.44	0.0		
08/19/2022	12:39:28	139	5.1	13.44	0.0		
08/19/2022	12:39:28	130	5.1	13.44	0.0		
08/19/2022	12:39:28	142	5.1	13.44	0.0		
08/19/2022	12:39:28	156	5.1	13.45	0.0		
08/19/2022	12:39:28	160	5.1	13.45	0.0		
08/19/2022	12:39:28	167	5.0	13.45	0.0		
08/19/2022	12:39:28	176	5.1	13.46	0.0		
08/19/2022	12:39:28	193	5.0	13.46	0.0		
08/19/2022	12:39:28	201	5.0	13.46	0.0		
08/19/2022	12:39:28	205	5.0	13.46	0.0		
08/19/2022	12:39:28	140	5.0	13.46	0.0		
08/19/2022	12:39:28	214	5.0	13.45	0.0		
08/19/2022	12:39:28	212	5.1	13.45	0.0		
08/19/2022	12:39:28	145	5.0	13.45	0.0		
08/19/2022	12:39:28	143	5.0	13.44	0.0		
08/19/2022	12:39:28	138	5.0	13.44	0.0		
08/19/2022	12:39:28	133	5.0	13.43	0.0		
08/19/2022	12:39:28	127	5.0	13.42	0.0		
08/19/2022	12:39:28	133	5.0	13.42	0.0		
08/19/2022	12:39:28	123	5.1	13.42	0.0		
08/19/2022	12:39:28	121	5.1	13.42	0.0		
08/19/2022	12:39:28	129	5.0	13.41	0.0		
08/19/2022	12:39:28	139	5.0	13.41	0.0		
08/19/2022	12:39:28	130	5.0	13.41	0.0		
08/19/2022	12:39:28	141	5.0	13.41	0.0		
08/19/2022	12:39:28	154	5.0	13.40	0.0		
08/19/2022	12:39:28	92	5.0	13.40	0.0		
08/19/2022	12:39:28	101	5.0	13.41	0.0		
08/19/2022	12:39:28	109	5.0	13.40	0.0		
08/19/2022	12:39:28	116	5.0	13.40	0.0		
08/19/2022	12:39:28	116	5.1	13.40	0.0		
08/19/2022	12:39:28	124	5.1	13.39	0.0		
08/19/2022	12:39:28	136	5.1	13.39	0.0		
08/19/2022	12:39:28	141	5.1	13.39	0.0		
08/19/2022	12:39:28	137	5.1	13.39	0.0		
08/19/2022	12:39:28	141	5.1	13.38	0.0		
08/19/2022	12:39:28	139	5.0	13.38	0.0		
08/19/2022	12:39:28	139	5.0	13.38	0.0		
08/19/2022	12:39:28	127	5.1	13.39	0.0		

Well			Field		Job Start	Customer	Job Number
Gutterson C28-775			DJ		Aug/19/2022	Chevron	EP06-00029
Date	Time 24-hr clock	Treating Pressure PSI	Flow Rate B/M	Density LB/G	Volume BBL	Message	
08/19/2022	12:39:28	131	5.1	13.38	0.0		
08/19/2022	12:39:28	126	5.1	13.38	0.0		
08/19/2022	12:39:28	120	5.1	13.38	0.0		
08/19/2022	12:39:28	89	5.1	13.38	0.0		
08/19/2022	12:39:28	85	5.1	13.38	0.0		
08/19/2022	12:39:28	88	5.1	13.37	0.0		
08/19/2022	12:39:28	91	5.0	13.37	0.0		
08/19/2022	12:39:28	92	5.0	13.37	0.0		
08/19/2022	12:39:28	91	5.0	13.37	0.0		
08/19/2022	12:39:28	99	5.0	13.37	0.0		
08/19/2022	12:39:28	108	5.0	13.37	0.0		
08/19/2022	12:39:28	117	5.0	13.36	0.0		
08/19/2022	12:39:28	114	5.0	13.36	0.0		
08/19/2022	12:39:28	122	5.0	13.36	0.0		
08/19/2022	12:39:28	132	5.0	13.36	0.0		
08/19/2022	12:39:28	140	5.0	13.36	0.0		
08/19/2022	12:39:28	173	5.0	13.36	0.0		
08/19/2022	12:39:28	165	5.0	13.36	0.0		
08/19/2022	12:39:28	133	5.1	13.36	0.0		
08/19/2022	12:39:28	120	5.1	13.36	0.0		
08/19/2022	12:39:28	101	5.1	13.36	0.0		
08/19/2022	12:39:28	98	5.1	13.36	0.0		
08/19/2022	12:39:28	99	5.0	13.36	0.0		
08/19/2022	12:39:28	82	5.0	13.35	0.0		
08/19/2022	12:39:28	87	5.0	13.35	0.0		
08/19/2022	12:39:28	89	5.0	13.35	0.0		
08/19/2022	12:39:28	87	5.0	13.35	0.0		
08/19/2022	12:39:28	87	5.0	13.35	0.0		
08/19/2022	12:39:28	92	5.1	13.35	0.0		
08/19/2022	12:39:28	95	5.0	13.35	0.0		
08/19/2022	12:39:28	92	5.0	13.35	0.0		
08/19/2022	12:39:28	98	5.0	13.35	0.0		
08/19/2022	12:39:28	194	5.1	13.35	0.0		
08/19/2022	12:39:28	213	5.1	13.35	0.0		
08/19/2022	12:39:28	208	5.1	13.35	0.0		
08/19/2022	12:39:28	215	5.0	13.35	0.0		
08/19/2022	12:39:28	209	5.0	13.35	0.0		
08/19/2022	12:39:28	195	5.0	13.35	0.0		
08/19/2022	12:39:28	164	5.1	13.35	0.0		
08/19/2022	12:39:28	161	5.0	13.35	0.0		
08/19/2022	12:39:28	129	5.0	13.36	0.0		
08/19/2022	12:39:28	122	5.0	13.36	0.0		
08/19/2022	12:39:28	98	5.0	13.36	0.0		
08/19/2022	12:39:28	97	5.0	13.36	0.0		
08/19/2022	12:39:28	99	5.0	13.36	0.0		
08/19/2022	12:39:28	83	5.0	13.36	0.0		
08/19/2022	12:39:28	132	5.0	13.36	0.0		
08/19/2022	12:39:28	145	5.0	13.36	0.0		
08/19/2022	12:39:28	89	5.0	13.36	0.0		
08/19/2022	12:39:28	148	5.0	13.37	0.0		
08/19/2022	12:39:28	161	5.1	13.37	0.0		
08/19/2022	12:39:28	179	5.0	13.37	0.0		
08/19/2022	12:39:28	173	5.0	13.37	0.0		
08/19/2022	12:39:28	192	5.0	13.38	0.0		

Well Gutterson C28-775			Field DJ		Job Start Aug/19/2022	Customer Chevron	Job Number EP06-00029
Date	Time 24-hr clock	Treating Pressure PSI	Flow Rate B/M	Density LB/G	Volume BBL	Message	
08/19/2022	13:32:48	522	2.2	8.39	0.0		
08/19/2022	13:32:48	615	2.2	8.39	0.0		
08/19/2022	13:32:48	551	2.3	8.39	0.0		
08/19/2022	13:32:48	549	2.3	8.39	0.0		
08/19/2022	13:32:48	617	2.3	8.39	0.0		
08/19/2022	13:32:48	522	2.3	8.39	0.0		
08/19/2022	13:32:48	585	2.3	8.39	0.0		
08/19/2022	13:32:48	593	2.3	8.39	0.0		
08/19/2022	13:32:48	521	2.3	8.39	0.0		
08/19/2022	13:32:48	615	2.3	8.39	0.0		
08/19/2022	13:32:48	560	2.3	8.39	0.0		
08/19/2022	13:32:48	549	2.3	8.39	0.0		
08/19/2022	13:32:48	583	2.3	8.39	0.0		
08/19/2022	13:32:48	530	2.3	8.39	0.0		
08/19/2022	13:32:48	624	2.3	8.39	0.0		
08/19/2022	13:32:48	549	2.3	8.39	0.0		
08/19/2022	13:32:48	565	2.3	8.39	0.0		
08/19/2022	13:32:48	618	2.3	8.39	0.0		
08/19/2022	13:32:48	525	2.3	8.39	0.0		
08/19/2022	13:32:48	604	2.3	8.39	0.0		
08/19/2022	13:32:48	592	2.3	8.39	0.0		
08/19/2022	13:32:48	529	2.3	8.39	0.0		
08/19/2022	13:32:48	627	2.3	8.39	0.0		
08/19/2022	13:32:48	556	2.3	8.39	0.0		
08/19/2022	13:32:48	563	2.3	8.39	0.0		
08/19/2022	13:32:48	625	2.3	8.39	0.0		
08/19/2022	13:32:48	529	2.3	8.39	0.0		
08/19/2022	13:32:48	602	2.3	8.39	0.0		
08/19/2022	13:32:48	543	2.3	8.39	0.0		
08/19/2022	13:32:48	581	2.3	8.39	0.0		
08/19/2022	13:32:48	618	2.3	8.39	0.0		
08/19/2022	13:32:48	527	2.3	8.39	0.0		
08/19/2022	13:32:48	615	2.3	8.39	0.0		
08/19/2022	13:32:48	587	2.3	8.39	0.0		
08/19/2022	13:32:48	542	2.3	8.39	0.0		
08/19/2022	13:32:48	635	2.3	8.39	0.0		
08/19/2022	13:32:48	551	2.3	8.39	0.0		
08/19/2022	13:32:48	577	2.3	8.39	0.0		
08/19/2022	13:32:48	624	2.3	8.39	0.0		
08/19/2022	13:32:48	530	2.3	8.39	0.0		
08/19/2022	13:32:48	613	2.3	8.39	0.0		
08/19/2022	13:32:48	593	2.3	8.39	0.0		
08/19/2022	13:32:48	538	2.3	8.39	0.0		
08/19/2022	13:32:48	613	2.3	8.39	0.0		
08/19/2022	13:32:48	557	2.3	8.39	0.0		
08/19/2022	13:32:48	624	2.3	8.39	0.0		
08/19/2022	13:32:48	579	2.3	8.39	0.0		
08/19/2022	13:32:48	552	2.3	8.39	0.0		
08/19/2022	13:32:48	633	2.3	8.39	0.0		
08/19/2022	13:32:48	544	2.3	8.39	0.0		
08/19/2022	13:32:48	589	2.3	8.39	0.0		
08/19/2022	13:32:48	620	2.3	8.39	0.0		
08/19/2022	13:32:48	531	2.3	8.39	0.0		
08/19/2022	13:32:48	623	2.3	8.39	0.0		

Well			Field		Job Start	Customer	Job Number
Gutterson C28-775			DJ		Aug/19/2022	Chevron	EP06-00029
Date	Time 24-hr clock	Treating Pressure PSI	Flow Rate B/M	Density LB/G	Volume BBL	Message	
08/19/2022	13:32:48	551	2.3	8.39	0.0		
08/19/2022	13:32:48	639	2.2	8.39	0.0		
08/19/2022	13:32:48	554	2.3	8.39	0.0		
08/19/2022	13:32:48	636	2.3	8.39	0.0		
08/19/2022	13:32:48	575	2.3	8.39	0.0		
08/19/2022	13:32:48	567	2.3	8.39	0.0		
08/19/2022	13:32:48	638	2.3	8.39	0.0		
08/19/2022	13:32:48	546	2.3	8.39	0.0		
08/19/2022	13:32:48	607	2.3	8.39	0.0		
08/19/2022	13:32:48	618	2.3	8.39	0.0		
08/19/2022	13:32:48	540	2.3	8.39	0.0		
08/19/2022	13:32:48	633	2.3	8.39	0.0		
08/19/2022	13:32:48	581	2.3	8.39	0.0		
08/19/2022	13:32:48	561	2.3	8.39	0.0		
08/19/2022	13:32:48	639	2.3	8.39	0.0		
08/19/2022	13:32:48	549	2.3	8.39	0.0		
08/19/2022	13:32:48	599	2.3	8.39	0.0		
08/19/2022	13:32:48	622	2.3	8.39	0.0		
08/19/2022	13:32:48	538	2.3	8.39	0.0		
08/19/2022	13:32:48	636	2.3	8.39	0.0		
08/19/2022	13:32:48	541	2.3	8.39	0.0		
08/19/2022	13:32:48	612	2.2	8.39	0.0		
08/19/2022	13:32:48	610	2.3	8.39	0.0		
08/19/2022	13:32:48	544	2.3	8.39	0.0		
08/19/2022	13:32:48	634	2.2	8.39	0.0		
08/19/2022	13:32:48	574	2.3	8.39	0.0		
08/19/2022	13:32:48	568	2.3	8.39	0.0		
08/19/2022	13:32:48	636	2.3	8.39	0.0		
08/19/2022	13:32:48	545	2.3	8.39	0.0		
08/19/2022	13:32:48	605	2.3	8.39	0.0		
08/19/2022	13:32:48	616	2.3	8.39	0.0		
08/19/2022	13:32:48	544	2.3	8.39	0.0		
08/19/2022	13:32:48	635	2.3	8.39	0.0		
08/19/2022	13:32:48	544	2.3	8.39	0.0		
08/19/2022	13:32:48	623	2.3	8.39	0.0		
08/19/2022	13:32:48	607	2.3	8.39	0.0		
08/19/2022	13:32:48	550	2.3	8.39	0.0		
08/19/2022	13:32:48	643	2.3	8.39	0.0		
08/19/2022	13:32:48	574	2.3	8.39	0.0		
08/19/2022	13:32:48	585	2.3	8.39	0.0		
08/19/2022	13:32:48	640	2.3	8.39	0.0		
08/19/2022	13:32:48	548	2.3	8.39	0.0		
08/19/2022	13:32:48	619	2.3	8.39	0.0		
08/19/2022	13:32:48	615	2.3	8.39	0.0		
08/19/2022	13:32:48	548	2.3	8.39	0.0		
08/19/2022	13:32:48	641	2.3	8.39	0.0		
08/19/2022	13:32:48	581	2.3	8.39	0.0		
08/19/2022	13:32:48	578	2.3	8.39	0.0		
08/19/2022	13:32:48	643	2.3	8.39	0.0		
08/19/2022	13:32:48	560	2.3	8.39	0.0		
08/19/2022	13:32:48	649	2.3	8.39	0.0		
08/19/2022	13:32:48	566	2.3	8.39	0.0		
08/19/2022	13:32:48	593	2.3	8.39	0.0		
08/19/2022	13:32:48	639	2.3	8.39	0.0		

