

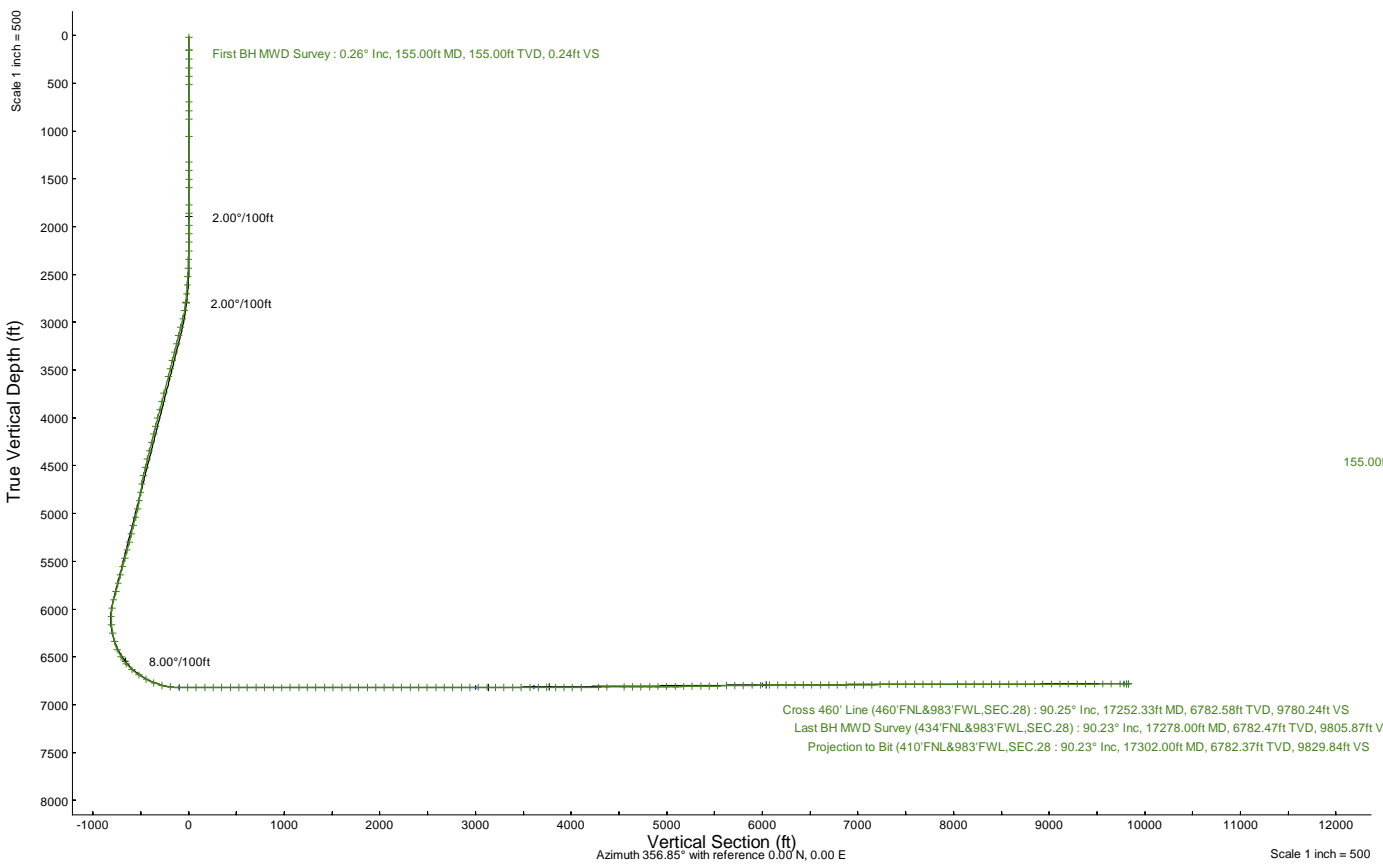
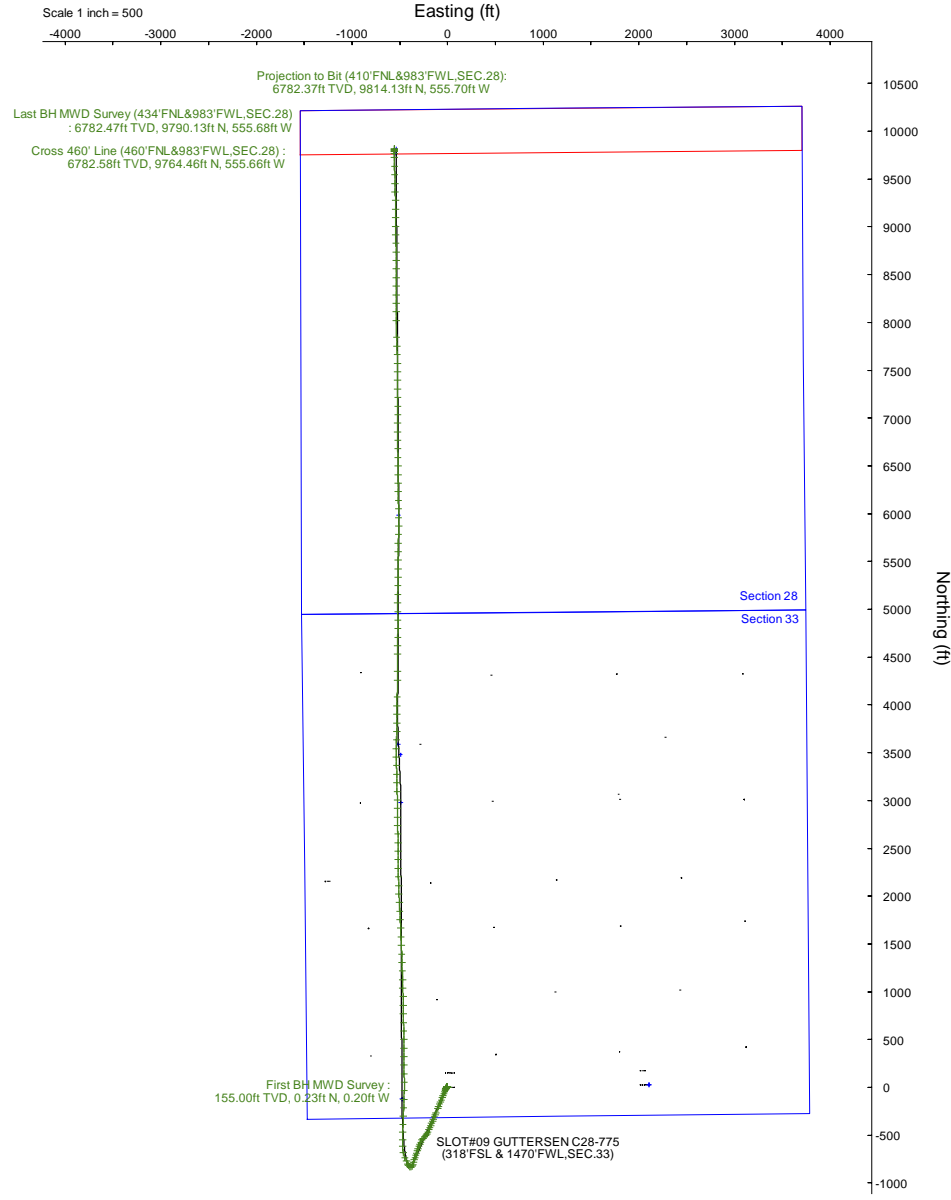
# NOBLE ENERGY, INC

Location: COLORADO Slot: SLOT#09 GUTTERSEN C28-775 (318'FSL & 1470'FWL,SEC.33)  
 Field: WELD COUNTY (NOBLE NAD 83 GRID) Well: Gutteresen C28-775  
 Facility: SEC.33-T04N-R64W Wellbore: Gutteresen C28-775 PWB

Plot reference wellpath is Gutteresen C28-775 (REV-E.0) PWP  
 True vertical depths are referenced to PD 460 (4724'GL+21'KB@4745'RKB) (RKB)  
 Reference wellpath measured depths are referenced to PD 460 (4724'GL+21'KB@4745'RKB) (RKB)  
 PD 460 (4724'GL+21'KB@4745'RKB) (RKB) to Mean Sea Level: 4745 feet  
 Mean Sea Level to Mud line (At Slot: SLOT#09 GUTTERSEN C28-775 (318'FSL & 1470'FWL,SEC.33)): 0 feet  
 Offset wellpath MDs are referenced to each path's default MD datum  
 Grid System: NAD83 / Lambert Colorado SP, Northern Zone (501), US feet  
 North Reference: Grid north  
 Scale: True distance  
 Coordinates are in feet referenced to Slot  
 Depths are in feet  
 Created by: guensler on 2022-08-31; Database: WA\_Denver

### Location Information

Facility Name		Grid East (US ft)	Grid North (US ft)	Latitude	Longitude	
SEC.33-T04N-R64W		3264404.630	1339924.700	40°15'45.4140"N	104°33'9.1764"W	
Slot	Local N (ft)	Local E (ft)	Grid East (US ft)	Grid North (US ft)	Latitude	Longitude
SLOT#09 GUTTERSEN C28-775 (318'FSL & 1470'FWL,SEC.33)	-24.24	-2107.25	3262297.472	1339900.456	40°15'45.3960"N	104°33'36.3600"W
PD 460 (4724'GL+21'KB@4745'RKB) (RKB) to Mud line (At Slot: SLOT#09 GUTTERSEN C28-775 (318'FSL & 1470'FWL,SEC.33))					4745ft	
Mean Sea Level to Mud line (At Slot: SLOT#09 GUTTERSEN C28-775 (318'FSL & 1470'FWL,SEC.33))					0ft	
PD 460 (4724'GL+21'KB@4745'RKB) (RKB) to Mean Sea Level					4745ft	



REFERENCE WELLPATH IDENTIFICATION			
Operator	NOBLE ENERGY, INC	Well	Guttersen C28-775
Field	WELD COUNTY (NOBLE NAD 83 GRID)	API	05-123-48938
Facility	SEC.33-T04N-R64W	Wellbore	Guttersen C28-775 AWB
Slot	SLOT#09 GUTTERSEN C28-775 (318'FSL & 1470'FWL,SEC.33)		

REPORT SETUP INFORMATION			
Projection System	NAD83 / Lambert Colorado SP, Northern Zone (501), US feet	Software System	WellArchitect® 6.0
North Reference	Grid	User	Guenaler
Scale	0.999957	Report Generated	8/31/2022 at 10:55:40 AM
Convergence at slot	0.61° East	Database	WA_Denver

WELLPATH LOCATION						
	Local coordinates		Grid coordinates		Geographic coordinates	
	North[ft]	East[ft]	Easting[US ft]	Northing[US ft]	Latitude	Longitude
Slot Location	-24.24	-2107.25	3262297.47	1339900.46	40°15'45.3960"N	104°33'36.3600"W
Facility Reference Pt			3264404.63	1339924.70	40°15'45.4140"N	104°33'9.1764"W
Field Reference Pt			3000000.00	4454105.15	48°46'34.3150"N	105°30'0.0000"W

WELLPATH DATUM			
Calculation method	Minimum curvature	PD 460 (4724'GL+21'KB@4745'RKB) (RKB) to Facility Vertical Datum	4745.00ft
Horizontal Reference Pt	Slot	PD 460 (4724'GL+21'KB@4745'RKB) (RKB) to Mean Sea Level	4745.00ft
Vertical Reference Pt	PD 460 (4724'GL+21'KB@4745'RKB) (RKB)	PD 460 (4724'GL+21'KB@4745'RKB) (RKB) to Mud Line at Slot (SLOT#09 GUTTERSEN C28-775 (318'FSL & 1470'FWL,SEC.33))	4745.00ft
MD Reference Pt	PD 460 (4724'GL+21'KB@4745'RKB) (RKB)	Section Origin	N 0.00, E 0.00 ft
Field Vertical Reference	Mean Sea Level	Section Azimuth	356.85°

REFERENCE WELLPATH IDENTIFICATION			
Operator	NOBLE ENERGY, INC	Well	Guttersen C28-775
Field	WELD COUNTY (NOBLE NAD 83 GRID)	API	05-123-48938
Facility	SEC.33-T04N-R64W	Wellbore	Guttersen C28-775 AWB
Slot	SLOT#09 GUTTERSEN C28-775 (318'FSL & 1470'FWL,SEC.33)		

WELLPATH DATA (187 stations) † = interpolated, ‡ = extrapolated station										
MD [ft]	Inclination [°]	Azimuth [°]	TVD [ft]	Vert Sect [ft]	North [ft]	East [ft]	Latitude	Longitude	DLS [°/100ft]	Comments
0.00†	0.000	318.860	0.00	0.00	0.00	0.00	40°15'45.3960"N	104°33'36.3600"W	0.00	
21.00	0.000	318.860	21.00	0.00	0.00	0.00	40°15'45.3960"N	104°33'36.3600"W	0.00	
155.00	0.260	318.860	155.00	0.24	0.23	-0.20	40°15'45.3983"N	104°33'36.3625"W	0.19	First BH MWD Survey
248.00	0.180	321.460	248.00	0.53	0.50	-0.43	40°15'45.4010"N	104°33'36.3655"W	0.09	
338.00	0.050	6.000	338.00	0.68	0.65	-0.51	40°15'45.4025"N	104°33'36.3665"W	0.17	
428.00	0.080	344.120	428.00	0.78	0.75	-0.53	40°15'45.4035"N	104°33'36.3667"W	0.04	
517.00	0.160	353.330	517.00	0.96	0.93	-0.56	40°15'45.4053"N	104°33'36.3671"W	0.09	
696.00	0.040	318.390	696.00	1.26	1.23	-0.63	40°15'45.4082"N	104°33'36.3679"W	0.07	
786.00	0.100	291.520	786.00	1.32	1.28	-0.72	40°15'45.4087"N	104°33'36.3691"W	0.07	
876.00	0.080	263.740	876.00	1.35	1.30	-0.86	40°15'45.4090"N	104°33'36.3709"W	0.05	
1055.00	0.200	254.650	1055.00	1.28	1.21	-1.28	40°15'45.4081"N	104°33'36.3764"W	0.07	
1323.00	0.520	260.990	1322.99	1.05	0.89	-2.94	40°15'45.4051"N	104°33'36.3977"W	0.12	
1413.00	0.540	272.390	1412.99	1.05	0.85	-3.76	40°15'45.4048"N	104°33'36.4084"W	0.12	
1503.00	0.460	285.650	1502.98	1.21	0.96	-4.53	40°15'45.4060"N	104°33'36.4184"W	0.16	
1592.00	0.760	276.810	1591.98	1.43	1.13	-5.46	40°15'45.4077"N	104°33'36.4303"W	0.35	
1771.00	0.970	263.090	1770.96	1.53	1.09	-8.15	40°15'45.4076"N	104°33'36.4649"W	0.16	
1860.00	1.370	254.820	1859.94	1.26	0.72	-9.92	40°15'45.4041"N	104°33'36.4879"W	0.49	
1985.00	0.110	242.660	1984.93	0.90	0.27	-11.47	40°15'45.3999"N	104°33'36.5079"W	1.01	
2074.00	0.090	335.990	2073.93	0.93	0.30	-11.58	40°15'45.4001"N	104°33'36.5093"W	0.16	
2164.00	0.030	114.030	2163.93	0.99	0.35	-11.58	40°15'45.4007"N	104°33'36.5094"W	0.13	
2254.00	1.150	201.770	2253.92	0.16	-0.50	-11.90	40°15'45.3923"N	104°33'36.5135"W	1.28	
2343.00	2.340	203.560	2342.88	-2.28	-2.99	-12.95	40°15'45.3678"N	104°33'36.5275"W	1.34	
2433.00	2.860	201.810	2432.79	-5.95	-6.76	-14.52	40°15'45.3307"N	104°33'36.5482"W	0.58	
2522.00	3.110	203.720	2521.66	-10.12	-11.03	-16.32	40°15'45.2887"N	104°33'36.5720"W	0.30	
2612.00	3.910	203.610	2611.50	-15.04	-16.08	-18.53	40°15'45.2390"N	104°33'36.6012"W	0.89	
2701.00	5.590	203.370	2700.19	-21.63	-22.84	-21.46	40°15'45.1726"N	104°33'36.6400"W	1.89	
2791.00	7.900	203.680	2789.56	-31.07	-32.53	-25.69	40°15'45.0773"N	104°33'36.6958"W	2.57	
2880.00	11.010	203.370	2877.34	-44.13	-45.94	-31.52	40°15'44.9454"N	104°33'36.7728"W	3.49	
2970.00	14.720	202.540	2965.06	-62.13	-64.39	-39.31	40°15'44.7638"N	104°33'36.8759"W	4.13	
3060.00	15.950	201.720	3051.86	-83.66	-86.44	-48.27	40°15'44.5469"N	104°33'36.9944"W	1.39	
3149.00	15.660	202.330	3137.49	-105.60	-108.91	-57.36	40°15'44.3258"N	104°33'37.1148"W	0.38	
3239.00	15.400	201.780	3224.21	-127.40	-131.25	-66.41	40°15'44.1061"N	104°33'37.2345"W	0.33	
3328.00	15.290	203.230	3310.03	-148.63	-153.00	-75.42	40°15'43.8920"N	104°33'37.3538"W	0.45	
3418.00	15.710	202.560	3396.76	-170.24	-175.16	-84.78	40°15'43.6741"N	104°33'37.4774"W	0.51	
3508.00	15.480	202.620	3483.45	-192.03	-197.50	-94.07	40°15'43.4543"N	104°33'37.6004"W	0.26	
3597.00	15.720	202.980	3569.17	-213.55	-219.56	-103.35	40°15'43.2373"N	104°33'37.7230"W	0.29	
3776.00	15.870	201.640	3741.41	-257.54	-264.64	-121.84	40°15'42.7938"N	104°33'37.9677"W	0.22	
3866.00	16.040	201.530	3827.94	-280.01	-287.64	-130.94	40°15'42.5674"N	104°33'38.0882"W	0.19	
3955.00	15.900	202.050	3913.51	-302.21	-310.38	-140.03	40°15'42.3437"N	104°33'38.2086"W	0.22	
4045.00	15.650	202.040	4000.12	-324.35	-333.06	-149.21	40°15'42.1206"N	104°33'38.3301"W	0.28	
4135.00	15.620	202.120	4086.79	-346.29	-355.53	-158.33	40°15'41.8994"N	104°33'38.4508"W	0.04	
4224.00	15.440	204.010	4172.54	-367.67	-377.46	-167.66	40°15'41.6838"N	104°33'38.5742"W	0.60	
4314.00	15.390	203.870	4259.30	-388.97	-399.32	-177.37	40°15'41.4688"N	104°33'38.7024"W	0.07	
4404.00	15.430	203.860	4346.07	-410.27	-421.19	-187.05	40°15'41.2537"N	104°33'38.8302"W	0.04	
4493.00	15.500	203.570	4431.84	-431.44	-442.92	-196.59	40°15'41.0400"N	104°33'38.9562"W	0.12	

REFERENCE WELLPATH IDENTIFICATION			
Operator	NOBLE ENERGY, INC	Well	Guttersen C28-775
Field	WELD COUNTY (NOBLE NAD 83 GRID)	API	05-123-48938
Facility	SEC.33-T04N-R64W	Wellbore	Guttersen C28-775 AWB
Slot	SLOT#09 GUTTERSEN C28-775 (318'FSL & 1470'FWL,SEC.33)		

WELLPATH DATA (187 stations)										
MD [ft]	Inclination [°]	Azimuth [°]	TVD [ft]	Vert Sect [ft]	North [ft]	East [ft]	Latitude	Longitude	DLS [°/100ft]	Comments
4583.00	15.490	204.020	4518.57	-452.88	-464.92	-206.29	40°15'40.8236"N	104°33'39.0844"W	0.13	
4673.00	15.290	205.790	4605.35	-473.95	-486.58	-216.35	40°15'40.6106"N	104°33'39.2170"W	0.57	
4762.00	11.020	216.250	4692.00	-490.81	-504.02	-226.49	40°15'40.4394"N	104°33'39.3502"W	5.47	
4852.00	13.410	232.070	4779.98	-503.41	-517.38	-239.81	40°15'40.3088"N	104°33'39.5239"W	4.55	
4941.00	15.400	226.130	4866.19	-517.01	-531.91	-256.47	40°15'40.1669"N	104°33'39.7408"W	2.78	
5031.00	15.700	205.560	4952.96	-535.50	-551.19	-270.35	40°15'39.9778"N	104°33'39.9224"W	6.11	
5120.00	15.550	203.690	5038.67	-556.70	-572.98	-280.34	40°15'39.7635"N	104°33'40.0542"W	0.59	
5210.00	15.880	204.150	5125.31	-578.41	-595.26	-290.23	40°15'39.5444"N	104°33'40.1848"W	0.39	
5300.00	15.680	205.010	5211.91	-600.07	-617.52	-300.41	40°15'39.3255"N	104°33'40.3191"W	0.34	
5389.00	15.880	202.230	5297.56	-621.68	-639.69	-310.10	40°15'39.1075"N	104°33'40.4471"W	0.88	
5479.00	16.290	197.270	5384.04	-644.63	-663.14	-318.50	40°15'38.8766"N	104°33'40.5588"W	1.59	
5569.00	16.220	197.300	5470.44	-668.24	-687.20	-325.99	40°15'38.6397"N	104°33'40.6586"W	0.08	
5658.00	16.230	196.970	5555.90	-691.56	-710.96	-333.32	40°15'38.4057"N	104°33'40.7563"W	0.10	
5748.00	15.980	197.190	5642.37	-714.99	-734.83	-340.65	40°15'38.1706"N	104°33'40.8542"W	0.29	
5837.00	16.290	197.320	5727.86	-738.17	-758.45	-347.98	40°15'37.9380"N	104°33'40.9520"W	0.35	
5927.00	16.250	197.050	5814.26	-761.81	-782.53	-355.43	40°15'37.7007"N	104°33'41.0514"W	0.10	
6016.00	16.450	197.390	5899.66	-785.30	-806.47	-362.85	40°15'37.4650"N	104°33'41.1503"W	0.25	
6106.00	10.180	219.250	5987.25	-803.14	-824.81	-371.71	40°15'37.2847"N	104°33'41.2671"W	8.82	
6195.00	10.810	254.980	6074.85	-810.67	-833.08	-384.76	40°15'37.2044"N	104°33'41.4365"W	7.23	
6285.00	10.550	299.100	6163.43	-808.00	-831.25	-400.13	40°15'37.2240"N	104°33'41.6346"W	8.87	
6374.00	10.900	337.030	6250.99	-795.72	-819.53	-410.55	40°15'37.3409"N	104°33'41.7673"W	7.80	
6464.00	16.150	335.600	6338.46	-776.04	-800.28	-419.05	40°15'37.5320"N	104°33'41.8743"W	5.84	
6553.00	24.420	337.550	6421.87	-747.09	-771.96	-431.21	40°15'37.8132"N	104°33'42.0273"W	9.32	
6642.00	32.830	336.420	6499.92	-707.04	-732.77	-447.91	40°15'38.2021"N	104°33'42.2374"W	9.47	
6732.00	40.560	347.370	6572.11	-655.19	-681.73	-464.11	40°15'38.7082"N	104°33'42.4394"W	11.23	
6822.00	49.550	357.330	6635.70	-591.87	-618.76	-472.13	40°15'39.3312"N	104°33'42.5342"W	12.67	
6911.00	57.060	3.430	6688.88	-520.77	-547.51	-471.47	40°15'40.0352"N	104°33'42.5160"W	10.06	
7001.00	61.750	0.880	6734.68	-443.65	-470.12	-468.60	40°15'40.7996"N	104°33'42.4684"W	5.75	
7090.00	69.490	1.690	6771.39	-362.90	-389.14	-466.77	40°15'41.5996"N	104°33'42.4337"W	8.74	
7180.00	76.260	2.810	6797.87	-277.32	-303.25	-463.38	40°15'42.4480"N	104°33'42.3783"W	7.62	
7269.00	81.720	1.780	6814.87	-190.39	-215.99	-459.89	40°15'43.3098"N	104°33'42.3214"W	6.24	
7359.00	89.940	2.400	6821.40	-101.08	-126.37	-456.62	40°15'44.1951"N	104°33'42.2669"W	9.16	
7449.00	89.780	1.120	6821.62	-11.41	-36.41	-453.85	40°15'45.0837"N	104°33'42.2190"W	1.43	
7538.00	90.310	359.440	6821.55	77.43	52.58	-453.42	40°15'45.9630"N	104°33'42.2012"W	1.98	
7628.00	90.280	358.890	6821.09	167.35	142.57	-454.73	40°15'46.8524"N	104°33'42.2059"W	0.61	
7717.00	89.850	359.470	6820.99	256.28	231.56	-456.00	40°15'47.7318"N	104°33'42.2101"W	0.81	
7807.00	90.220	359.280	6820.93	346.19	321.56	-456.99	40°15'48.6212"N	104°33'42.2105"W	0.46	
7896.00	90.120	359.560	6820.67	435.10	410.55	-457.89	40°15'49.5007"N	104°33'42.2100"W	0.33	
7986.00	89.570	359.280	6820.91	525.01	500.54	-458.80	40°15'50.3901"N	104°33'42.2095"W	0.69	
8075.00	90.030	359.330	6821.22	613.92	589.54	-459.88	40°15'51.2695"N	104°33'42.2112"W	0.52	
8165.00	89.720	359.340	6821.42	703.84	679.53	-460.92	40°15'52.1589"N	104°33'42.2124"W	0.34	
8255.00	89.750	359.280	6821.84	793.76	769.52	-462.00	40°15'53.0483"N	104°33'42.2141"W	0.07	
8344.00	89.780	358.920	6822.20	882.69	858.51	-463.40	40°15'53.9277"N	104°33'42.2200"W	0.41	
8434.00	90.060	357.740	6822.33	972.65	948.47	-466.03	40°15'54.8169"N	104°33'42.2416"W	1.35	
8523.00	90.340	358.180	6822.02	1061.64	1037.41	-469.19	40°15'55.6961"N	104°33'42.2703"W	0.59	

REFERENCE WELLPATH IDENTIFICATION			
Operator	NOBLE ENERGY, INC	Well	Guttersen C28-775
Field	WELD COUNTY (NOBLE NAD 83 GRID)	API	05-123-48938
Facility	SEC.33-T04N-R64W	Wellbore	Guttersen C28-775 AWB
Slot	SLOT#09 GUTTERSEN C28-775 (318'FSL & 1470'FWL,SEC.33)		

WELLPATH DATA (187 stations)										
MD [ft]	Inclination [°]	Azimuth [°]	TVD [ft]	Vert Sect [ft]	North [ft]	East [ft]	Latitude	Longitude	DLS [°/100ft]	Comments
8613.00	90.490	358.470	6821.37	1151.60	1127.37	-471.82	40°15'56.5853"N	104°33'42.2919"W	0.36	
8703.00	90.400	358.650	6820.67	1241.56	1217.34	-474.09	40°15'57.4746"N	104°33'42.3088"W	0.22	
8792.00	90.150	358.310	6820.24	1330.52	1306.31	-476.45	40°15'58.3539"N	104°33'42.3271"W	0.47	
8881.00	90.520	357.350	6819.72	1419.51	1395.24	-479.82	40°15'59.2331"N	104°33'42.3585"W	1.16	
8971.00	89.940	357.360	6819.36	1509.50	1485.15	-483.97	40°16'0.1218"N	104°33'42.3998"W	0.64	
9060.00	90.030	357.540	6819.38	1598.50	1574.06	-487.93	40°16'1.0008"N	104°33'42.4387"W	0.23	
9150.00	89.660	357.460	6819.62	1688.49	1663.97	-491.86	40°16'1.8897"N	104°33'42.4771"W	0.42	
9239.00	89.940	357.360	6819.94	1777.49	1752.88	-495.88	40°16'2.7687"N	104°33'42.5168"W	0.33	
9329.00	89.690	356.880	6820.23	1867.49	1842.77	-500.40	40°16'3.6573"N	104°33'42.5629"W	0.60	
9418.00	89.820	356.960	6820.61	1956.48	1931.64	-505.18	40°16'4.5360"N	104°33'42.6125"W	0.17	
9508.00	89.850	357.310	6820.87	2046.48	2021.52	-509.68	40°16'5.4246"N	104°33'42.6582"W	0.39	
9598.00	89.940	358.680	6821.03	2136.46	2111.47	-512.83	40°16'6.3137"N	104°33'42.6866"W	1.53	
9687.00	89.750	358.910	6821.27	2225.41	2200.45	-514.70	40°16'7.1932"N	104°33'42.6986"W	0.34	
9777.00	90.710	359.280	6820.91	2315.34	2290.43	-516.12	40°16'8.0825"N	104°33'42.7046"W	1.14	
9867.00	90.230	359.760	6820.17	2405.24	2380.43	-516.88	40°16'8.9718"N	104°33'42.7021"W	0.75	
9956.00	89.670	359.610	6820.25	2494.13	2469.42	-517.36	40°16'9.8513"N	104°33'42.6962"W	0.65	
10046.00	89.830	358.800	6820.64	2584.05	2559.41	-518.61	40°16'10.7406"N	104°33'42.7000"W	0.92	
10135.00	90.440	358.680	6820.43	2673.00	2648.39	-520.57	40°16'11.6201"N	104°33'42.7131"W	0.70	
10224.00	91.060	358.980	6819.27	2761.94	2737.37	-522.39	40°16'12.4994"N	104°33'42.7244"W	0.77	
10314.00	89.610	359.090	6818.74	2851.87	2827.35	-523.90	40°16'13.3887"N	104°33'42.7317"W	1.62	
10403.00	91.580	359.870	6817.82	2940.77	2916.34	-524.71	40°16'14.2681"N	104°33'42.7300"W	2.38	
10493.00	89.770	358.260	6816.76	3030.69	3006.31	-526.18	40°16'15.1573"N	104°33'42.7367"W	2.69	
10582.00	89.210	359.080	6817.55	3119.64	3095.28	-528.25	40°16'16.0367"N	104°33'42.7512"W	1.12	
10672.00	90.040	358.620	6818.14	3209.58	3185.26	-530.05	40°16'16.9260"N	104°33'42.7622"W	1.05	
10761.00	89.860	358.610	6818.22	3298.54	3274.23	-532.20	40°16'17.8054"N	104°33'42.7778"W	0.20	
10851.00	89.860	357.950	6818.44	3388.51	3364.19	-534.90	40°16'18.6946"N	104°33'42.8004"W	0.73	
10940.00	89.640	0.450	6818.82	3477.43	3453.18	-536.15	40°16'19.5740"N	104°33'42.8042"W	2.82	
11030.00	90.010	0.460	6819.10	3567.25	3543.17	-535.43	40°16'20.4632"N	104°33'42.7827"W	0.41	
11120.00	90.230	0.760	6818.91	3657.05	3633.17	-534.47	40°16'21.3524"N	104°33'42.7581"W	0.41	
11209.00	90.100	0.840	6818.65	3745.84	3722.16	-533.23	40°16'22.2316"N	104°33'42.7299"W	0.17	
11299.00	89.980	1.190	6818.59	3835.60	3812.14	-531.64	40°16'23.1206"N	104°33'42.6971"W	0.41	
11389.00	90.040	0.700	6818.58	3925.37	3902.13	-530.15	40°16'24.0096"N	104°33'42.6656"W	0.55	
11478.00	90.230	0.720	6818.37	4014.17	3991.12	-529.05	40°16'24.8889"N	104°33'42.6393"W	0.21	
11568.00	90.230	0.540	6818.00	4103.97	4081.12	-528.06	40°16'25.7780"N	104°33'42.6142"W	0.20	
11747.00	90.530	0.750	6816.82	4282.58	4260.10	-526.04	40°16'27.5464"N	104°33'42.5638"W	0.20	
11837.00	90.840	0.970	6815.74	4372.35	4350.09	-524.69	40°16'28.4354"N	104°33'42.5341"W	0.42	
12016.00	90.410	359.850	6813.79	4550.99	4529.07	-523.41	40°16'30.2039"N	104°33'42.4931"W	0.67	
12105.00	90.350	0.820	6813.20	4639.82	4618.06	-522.89	40°16'31.0832"N	104°33'42.4743"W	1.09	
12195.00	90.970	0.980	6812.16	4729.59	4708.05	-521.48	40°16'31.9722"N	104°33'42.4438"W	0.71	
12284.00	90.350	0.270	6811.14	4818.39	4797.03	-520.51	40°16'32.8514"N	104°33'42.4191"W	1.06	
12374.00	90.070	359.750	6810.81	4908.25	4887.03	-520.49	40°16'33.7407"N	104°33'42.4066"W	0.66	
12463.00	90.200	358.880	6810.60	4997.17	4976.02	-521.56	40°16'34.6202"N	104°33'42.4082"W	0.99	
12553.00	90.070	0.330	6810.38	5087.06	5066.02	-522.18	40°16'35.5095"N	104°33'42.4039"W	1.62	
12642.00	91.000	0.900	6809.55	5175.87	5155.01	-521.22	40°16'36.3888"N	104°33'42.3794"W	1.23	
12732.00	90.720	0.500	6808.20	5265.65	5244.99	-520.12	40°16'37.2778"N	104°33'42.3530"W	0.54	

REFERENCE WELLPATH IDENTIFICATION			
Operator	NOBLE ENERGY, INC	Well	Guttersen C28-775
Field	WELD COUNTY (NOBLE NAD 83 GRID)	API	05-123-48938
Facility	SEC.33-T04N-R64W	Wellbore	Guttersen C28-775 AWB
Slot	SLOT#09 GUTTERSEN C28-775 (318'FSL & 1470'FWL,SEC.33)		

WELLPATH DATA (187 stations)										
MD [ft]	Inclination [°]	Azimuth [°]	TVD [ft]	Vert Sect [ft]	North [ft]	East [ft]	Latitude	Longitude	DLS [°/100ft]	Comments
12821.00	90.560	0.100	6807.21	5354.49	5333.99	-519.66	40°16'38.1571"N	104°33'42.3348"W	0.48	
12911.00	91.400	359.990	6805.67	5444.33	5423.97	-519.59	40°16'39.0463"N	104°33'42.3216"W	0.94	
13001.00	91.150	1.120	6803.67	5534.12	5513.94	-518.71	40°16'39.9352"N	104°33'42.2981"W	1.29	
13090.00	91.240	0.920	6801.81	5622.86	5602.91	-517.13	40°16'40.8142"N	104°33'42.2655"W	0.25	
13180.00	91.060	1.150	6800.00	5712.61	5692.88	-515.51	40°16'41.7030"N	104°33'42.2322"W	0.32	
13269.00	90.560	1.330	6798.75	5801.34	5781.85	-513.58	40°16'42.5819"N	104°33'42.1953"W	0.60	
13359.00	91.000	359.360	6797.52	5891.16	5871.83	-513.04	40°16'43.4711"N	104°33'42.1760"W	2.24	
13448.00	91.400	359.760	6795.66	5980.04	5960.81	-513.72	40°16'44.3503"N	104°33'42.1726"W	0.64	
13538.00	90.720	359.850	6793.99	6069.90	6050.79	-514.03	40°16'45.2395"N	104°33'42.1643"W	0.76	
13627.00	90.690	359.740	6792.90	6158.78	6139.79	-514.35	40°16'46.1189"N	104°33'42.1563"W	0.13	
13717.00	90.870	359.050	6791.67	6248.68	6229.77	-515.30	40°16'47.0082"N	104°33'42.1562"W	0.79	
13807.00	90.040	359.040	6790.96	6338.61	6319.76	-516.80	40°16'47.8975"N	104°33'42.1633"W	0.92	
13896.00	89.920	359.300	6790.99	6427.54	6408.75	-518.09	40°16'48.7770"N	104°33'42.1678"W	0.32	
13986.00	89.950	359.050	6791.09	6517.46	6498.74	-519.38	40°16'49.6663"N	104°33'42.1722"W	0.28	
14075.00	89.800	359.550	6791.28	6606.38	6587.73	-520.47	40°16'50.5458"N	104°33'42.1741"W	0.59	
14165.00	89.760	359.340	6791.63	6696.29	6677.72	-521.34	40°16'51.4352"N	104°33'42.1731"W	0.24	
14254.00	89.090	359.850	6792.52	6785.18	6766.72	-521.97	40°16'52.3146"N	104°33'42.1690"W	0.95	
14344.00	89.400	359.590	6793.71	6875.06	6856.71	-522.41	40°16'53.2039"N	104°33'42.1624"W	0.45	
14434.00	90.290	0.410	6793.95	6964.92	6946.71	-522.41	40°16'54.0932"N	104°33'42.1501"W	1.34	
14523.00	91.030	0.270	6792.93	7053.75	7035.70	-521.88	40°16'54.9725"N	104°33'42.1312"W	0.85	
14613.00	90.930	359.810	6791.39	7143.59	7125.68	-521.82	40°16'55.8616"N	104°33'42.1181"W	0.52	
14702.00	91.270	0.310	6789.68	7232.44	7214.67	-521.72	40°16'56.7409"N	104°33'42.1047"W	0.68	
14792.00	90.600	359.310	6788.21	7322.30	7304.65	-522.02	40°16'57.6301"N	104°33'42.0963"W	1.34	
14882.00	90.840	359.310	6787.08	7412.21	7394.64	-523.11	40°16'58.5194"N	104°33'42.0980"W	0.27	
14971.00	90.690	359.400	6785.89	7501.12	7483.63	-524.11	40°16'59.3988"N	104°33'42.0988"W	0.20	
15061.00	89.730	358.340	6785.56	7591.06	7573.61	-525.88	40°17'0.2881"N	104°33'42.1094"W	1.59	
15150.00	90.290	359.560	6785.55	7680.00	7662.59	-527.51	40°17'1.1675"N	104°33'42.1183"W	1.51	
15240.00	88.750	356.840	6786.30	7769.96	7752.53	-530.34	40°17'2.0566"N	104°33'42.1425"W	3.47	
15330.00	89.830	358.180	6787.42	7859.94	7842.44	-534.25	40°17'2.9454"N	104°33'42.1806"W	1.91	
15509.00	90.290	0.080	6787.23	8038.79	8021.41	-536.97	40°17'4.7141"N	104°33'42.1913"W	1.09	
15599.00	90.260	359.330	6786.80	8128.68	8111.40	-537.43	40°17'5.6034"N	104°33'42.1850"W	0.83	
15688.00	90.260	359.710	6786.39	8217.58	8200.40	-538.18	40°17'6.4829"N	104°33'42.1824"W	0.43	
15778.00	90.290	359.740	6785.96	8307.47	8290.40	-538.61	40°17'7.3722"N	104°33'42.1757"W	0.05	
15867.00	90.500	0.160	6785.35	8396.34	8379.39	-538.69	40°17'8.2517"N	104°33'42.1646"W	0.53	
15956.00	90.130	359.810	6784.86	8485.20	8468.39	-538.71	40°17'9.1311"N	104°33'42.1527"W	0.57	
16046.00	90.200	359.730	6784.60	8575.08	8558.39	-539.07	40°17'10.0204"N	104°33'42.1451"W	0.12	
16135.00	90.470	359.930	6784.08	8663.96	8647.39	-539.34	40°17'10.8999"N	104°33'42.1363"W	0.38	
16225.00	90.410	359.620	6783.39	8753.84	8737.39	-539.69	40°17'11.7892"N	104°33'42.1286"W	0.35	
16315.00	89.610	358.460	6783.37	8843.77	8827.37	-541.20	40°17'12.6785"N	104°33'42.1358"W	1.57	
16404.00	89.900	359.170	6783.75	8932.72	8916.35	-543.04	40°17'13.5579"N	104°33'42.1474"W	0.86	
16494.00	90.010	359.830	6783.82	9022.62	9006.35	-543.82	40°17'14.4473"N	104°33'42.1452"W	0.74	
16583.00	90.200	0.480	6783.66	9111.47	9095.35	-543.58	40°17'15.3267"N	104°33'42.1300"W	0.76	
16673.00	89.800	359.490	6783.66	9201.34	9185.34	-543.61	40°17'16.2160"N	104°33'42.1180"W	1.19	
16763.00	90.010	358.320	6783.81	9291.28	9275.33	-545.33	40°17'17.1053"N	104°33'42.1279"W	1.32	
16852.00	90.200	356.200	6783.65	9380.27	9364.22	-549.58	40°17'17.9841"N	104°33'42.1706"W	2.39	

REFERENCE WELLPATH IDENTIFICATION			
Operator	NOBLE ENERGY, INC	Well	Guttersen C28-775
Field	WELD COUNTY (NOBLE NAD 83 GRID)	API	05-123-48938
Facility	SEC.33-T04N-R64W	Wellbore	Guttersen C28-775 AWB
Slot	SLOT#09 GUTTERSEN C28-775 (318'FSL & 1470'FWL,SEC.33)		

WELLPATH DATA (187 stations) † = interpolated, ‡ = extrapolated station										
MD [ft]	Inclination [°]	Azimuth [°]	TVD [ft]	Vert Sect [ft]	North [ft]	East [ft]	Latitude	Longitude	DLS ["/100ft]	Comments
16942.00	90.260	359.790	6783.28	9470.24	9454.15	-552.73	40°17'18.8731"N	104°33'42.1990"W	3.99	
17032.00	90.130	358.920	6782.98	9560.15	9544.14	-553.74	40°17'19.7624"N	104°33'42.1998"W	0.98	
17121.00	89.920	359.330	6782.94	9649.08	9633.13	-555.10	40°17'20.6419"N	104°33'42.2052"W	0.52	
17211.00	90.290	359.980	6782.77	9738.97	9723.13	-555.64	40°17'21.5312"N	104°33'42.1999"W	0.83	
17252.33†	90.253	359.961	6782.58	9780.24	9764.46	-555.66	40°17'21.9396"N	104°33'42.1945"W	0.10	Cross 460' Line (460'FNL&983'FWL,SEC.28)
17278.00	90.230	359.950	6782.47	9805.87	9790.13	-555.68	40°17'22.1933"N	104°33'42.1912"W	0.10	Last BH MWD Survey (434'FNL&983'FWL,SEC.28)
17302.00‡	90.230	359.950	6782.37	9829.84	9814.13	-555.70	40°17'22.4304"N	104°33'42.1882"W	0.00	Projection to Bit (410'FNL&983'FWL,SEC.28)

TARGETS									
Name	TVD [ft]	North [ft]	East [ft]	Grid East [US ft]	Grid North [US ft]	Latitude	Longitude	Shape	
Guttersen C28-715 Section 28	-3.00	26.07	2106.95	3264404.33	1339926.52	40°15'45.4320"N	104°33'9.1800"W	polygon	
	2D Polygon: dimensions not calculated								
Guttersen C28-715 Section 33	-3.00	26.07	2106.95	3264404.33	1339926.52	40°15'45.4320"N	104°33'9.1800"W	polygon	
	2D Polygon: dimensions not calculated								
GUTTERSEN C28-775 BHL 2 (200'FNL & 999'FWL,SEC.28)	6761.00	10023.37	-541.25	3261756.25	1349923.37	40°17'24.4965"N	104°33'41.9732"W	point	
GUTTERSEN C28-775 BHL (200'FNL & 999'FWL,SEC.28)	6769.00	10023.37	-541.25	3261756.25	1349923.37	40°17'24.4965"N	104°33'41.9732"W	point	
GUTTERSEN C28-775 BHL REV-3 (200'FNL & 999'FWL,SEC.28)	6780.00	10023.37	-541.25	3261756.25	1349923.37	40°17'24.4965"N	104°33'41.9732"W	point	
GUTTERSEN C28-775 BHL REV-4 (410'FNL & 999'FWL,SEC.28)	6780.00	9814.45	-540.28	3261757.22	1349714.46	40°17'22.4320"N	104°33'41.9892"W	point	
GUTTERSEN C28-775 Cross 460' Line (460'FNL & 999'FWL,SEC.28)	6780.17	9764.46	-539.91	<b>3261757.59</b>	<b>1349664.47</b>	40°17'21.9380"N	104°33'41.9912"W	point	
Guttersen C28-775-IP1	6785.00	3478.57	-494.14	3261803.35	1343378.87	40°16'19.8205"N	104°33'42.2589"W	point	
GUTTERSEN C28-775 VS TARGET 2	6793.00	5982.40	-512.16	3261785.34	1345882.59	40°16'44.5635"N	104°33'42.1496"W	point	
Guttersen C28-775-AC Inflection Point	6815.53	3587.55	-514.84	<b>3261782.65</b>	<b>1343487.84</b>	40°16'20.8996"N	104°33'42.5111"W	point	
GUTTERSEN C28-775 LP /PLAN (200'FSL & 1000'FWL,SEC.33)	6820.00	-123.03	-468.22	3261829.27	1339777.43	40°15'44.2293"N	104°33'42.4161"W	point	
GUTTERSEN C28-775 LP/TPZ for AC (200'FSL & 990'FWL,SEC.33)	6820.00	-123.03	-478.22	3261819.27	1339777.43	40°15'44.2303"N	104°33'42.5451"W	point	
GUTTERSEN C28-775 VS TARGET 1	6820.00	2977.89	-490.52	3261806.97	1342878.21	40°16'14.8728"N	104°33'42.2805"W	point	

TARGETS									
Name	TVD [ft]	North [ft]	East [ft]	Grid East [US ft]	Grid North [US ft]	Latitude	Longitude	Shape	
GUTTERSEN C28 460' Setback	7000.00	0.00	0.00	3262297.47	1339900.46	40°15'45.3960"N	104°33'36.3600"W	polygon	
	2D Polygon: dimensions not calculated								

WELLPATH COMPOSITION - Ref Wellbore: Guttersen C28-775 AWB Ref Wellpath: Guttersen C28-775 AWP						
Start MD [ft]	End MD [ft]	Positional Uncertainty Model	Log Name/Comment		Wellbore	Survey Date
21.00	1860.00	OWSG MWD rev2 (MS+IFR1)	13.5 Surface Hole OWSG MWD rev2 (MS+IFR1) <155'-1860>		Guttersen C28-775 AWB	8/23/2022
1860.00	17302.00	OWSG MWD rev2 (MS+IFR1)	8.5" ATC OWSG MWD rev2 (MS+IFR1)		Guttersen C28-775 AWB	8/31/2022

REFERENCE WELLPATH IDENTIFICATION			
Operator	NOBLE ENERGY, INC	Well	Guttersen C28-775
Field	WELD COUNTY (NOBLE NAD 83 GRID)	API	05-123-48938
Facility	SEC.33-T04N-R64W	Wellbore	Guttersen C28-775 AWB
Slot	SLOT#09 GUTTERSEN C28-775 (318'FSL & 1470'FWL,SEC.33)		

WELLPATH COMMENTS				
MD [ft]	Inclination [°]	Azimuth [°]	TVD [ft]	Comment
155.00	0.260	318.860	155.00	First BH MWD Survey
17252.33	90.253	359.961	6782.58	Cross 460' Line (460'FNL&983'FWL,SEC.28)
17278.00	90.230	359.950	6782.47	Last BH MWD Survey (434'FNL&983'FWL,SEC.28)
17302.00	90.230	359.950	6782.37	Projection to Bit (410'FNL&983'FWL,SEC.28)