



Terra Energy Partners, LLC

SURFACE POST JOB REPORT

FEDERAL RG 312-7-297 05-103-12487
S:7 T:2S R:97W Rio Blanco CO

CallSheet #: 83215
Proposal #: 62885



SURFACE Post Job Report

Attention: Mr. Jayson Boebert | (970) 274-2569 | jboebert@terraep.com
Terra Energy Partners, LLC
4828 Loop Central Dr., Suite 900 | Houston, TX 77081

Dear Mr. Jayson Boebert,

Thank you for the opportunity to provide cementing services on this well. American Cementing strives to achieve complete customer satisfaction. If you have any questions regarding the services or data provided, please contact American Cementing at any time.

Sincerely,

Krystal Schell

Field Engineer I | (719) 992-1830 | krystal.schell@americacementing.com

Field Office 28730 US-6, Rifle, CO 81650
Phone: (970) 657-1157

Job Details & Summary

Geometry

Type	Function	OD (in)	ID (in)	Weight (lb/ft)	Thread	Top (ft)	Bottom (ft)	Excess (%)
Casing	Outer	20	19.5	53	n/a	0	102	0
Open Hole	Outer	n/a	17.5	n/a	n/a	102	1490	20
Casing	Inner	13.375	12.615	54.5	Buttress	0	1490	0

Equipment / People

Unit Type	Unit	Power Unit	Employee #1	Employee #2
AS Cement Trailer Float	CTF-9898	TRC-201	Balint, Daniel	
Cement Trailer Float	CTF-254	TRB-421	Balint, Daniel	Bradbrook, Jeremy
Field Storage Float	FSF-389			
Cement Pump Float	CPF-091	TRH-082	Hale, Jason	
Light Duty Vehicles	LDV-082		Kelsey, John	

Timing

Event	Date/Time
Call Out	8/31/2022 09:00
Depart Facility	8/31/2022 11:00
On Location	8/31/2022 12:00
Rig Up Iron	8/31/2022 12:30
Job Started	8/31/2022 16:05
Job Completed	8/31/2022 18:37
Rig Down Iron	8/31/2022 18:50
Depart Location	8/31/2022 19:45

General Job Information

Metrics	Value
Well Fluid Density	9.2 lb/gal
Well Fluid Type	WBM
Rig Circulation Vol	450 bbls
Rig Circulation Time	0.5 hours
Calculated Displacement	227.8 bbls
Actual Displacement	227.8 bbls
Total Spacer to Surface	20 bbls
Total CMT to Surface	48 bbls
Well Topped Out	N/A

Job Details

Metrics	Value
Flare Prior to Job	No
Flare Prior to Job	0 units
Flare During Job	No
Flare During Job	0 units
Flare at End of Job	No
Flare at End of Job	0 units
Well Full Prior to Job	Yes
Well Fluid Density Into Well	9.1 lb/gal
Well Fluid Density Out of Well	9.2 lb/gal

Job Details (cont.)

Metrics	Value
BHCT	74 °F
BHST	90 °F

Water Analysis

Metrics	Value	Recommended
Water Source	Flat Tank	
Temperature	70 °F	50-80 °F
pH Level	7	5.5-8.5
Chlorides	0 mg/L	0-3000 mg/L
Total Alkalinity	180	0-1000
Total Hardness	450 mg/L	0-500 mg/L
Carbonates	0 mg/L	0-100 mg/L
Sulfates	200 mg/L	0-1500 mg/L
Potassium	0 mg/L	0-3000 mg/L
Iron	0 mg/L	0-300 mg/L

Circulation

Lost Circulation Experienced
No

Job Execution Information

Fluid	Product	Function	Density (lb/gal)	Yield (ft ³ /sk)	Water Rq. (gal/sk)	Water Rq. (gal/bbl)	Volume (sks)	Volume (bbl)	Designed Top (ft)
1	Water	Flush	8.34			42.00		20.00	0
2	Primary Cement	Primary	12.30	2.34	13.42		548.00	228.24	0
3	Water	DisplacementFinal	8.34			42.00		227.80	0

Job Fluid Details

Fluid	Type	Fluid	Product	Function	Conc.	Uom
2	Primary	Primary Cement	ASTM TYPE I/II	Cement	100.00	%
2	Primary	Primary Cement	A-10	Accelerator	5.00	%BWOB
2	Primary	Primary Cement	A-2	Accelerator	2.00	lb/sk
2	Primary	Primary Cement	A-7P	Accelerator	2.00	lb/sk
2	Primary	Primary Cement	FP-24	Defoamer	0.30	%BWOB
2	Primary	Primary Cement	IntegraSeal POLI	LostCirculation	0.25	lb/sk
2	Primary	Primary Cement	STATIC FREE	Other	0.01	lb/sk

Job Logs

Line	Event	Date (MM/DD/YY)	Time (HH:MM)	Density (lb/gal)	Pump Rate (bpm)	Pump Volume (bbls)	Pipe Pressure (psi)	Comment
1	CALLOUT	8/31/2022	09:00					CREW CALLED TO PREPARE FOR A SURFACE CEMENT JOB. RTS IS 12:00 ON 8-31-22
2	SAFETY MEETING	8/31/2022	10:45					JOURNEY MANAGEMENT MEETING
3	DEPART YARD	8/31/2022	11:00					CREW DEPARTS RIFLE, CO YARD FOR LOCATION
4	ARRIVE ON LOCATION	8/31/2022	12:00					ARRIVE ON LOCATION, VERIFY ALL PROPER PRODUCTS, EQUIPMENT AND JOB PROCEDURES WITH CUSTOMER
5	SAFETY MEETING	8/31/2022	12:10					RIG UP SAFETY MEETING
6	SPOT UNITS	8/31/2022	12:20					SPOT ALL EQUIPMENT FOR RIG UP
7	RIG UP	8/31/2022	12:30					RIG UP ALL EQUIPMENT
8	STANDBY	8/31/2022	13:00					CREW ON STANDBY, WHILE RIG RUNS CASING
9	SAFETY MEETING	8/31/2022	15:45					PRE JOB
10	LOAD LINES	8/31/2022	16:05	8.34	4.2	3	310	LOAD LINES FOR PSI TEST
11	PRESSURE TEST	8/31/2022	16:06	8.34	5.2	1	4000	PRESSURE TEST PUMP AND LINES TO CEMENT HEAD
12	PUMP SPACER	8/31/2022	16:07	8.34	5.2	20	340	20 BBLS FRESH SPACER
13	PUMP CEMENT	8/31/2022	16:11	12.3	6.7	10	340	228 BBLS PRIMARY CMT – 12.3 # 2.34 Y 13.4 MW 548 sks (175 BBLS H2O) 10 BBLS AWAY
14	PUMP CEMENT	8/31/2022	16:21	12.3	6.7	40	460	50 BBLS AWAY
15	PUMP CEMENT	8/31/2022	16:28	12.3	6.7	50	410	100 BBLS AWAY
16	PUMP CEMENT	8/31/2022	16:36	12.3	6.7	50	410	150 BBLS AWAY
17	PUMP CEMENT	8/31/2022	16:43	12.3	6.7	50	410	200 BBLS AWAY
18	PUMP CEMENT	8/31/2022	16:48	12.3	2	28	70	228 BBLS AWAY SHUTDOWN TO WASHUP
19	WASHUP	8/31/2022	16:50					WASHUP AND DROP PLUG
20	DISPLACEMENT	8/31/2022	16:54	8.34	2	10	60	SEND PLUG AND BEGIN DISPLACEMENT 10 BBLS AWAY
21	DISPLACEMENT	8/31/2022	17:11	8.34	4	40	50	50 BBLS AWAY
22	DISPLACEMENT	8/31/2022	17:22	8.34	4	50	190	100 BBLS AWAY
23	DISPLACEMENT	8/31/2022	17:34	8.34	4	50	350	150 BBLS AWAY
24	DISPLACEMENT	8/31/2022	17:56	8.34	4	50	520	200 BBLS AWAY, STAGE CEMENT FOR 5 MINS
25	LAND PLUG	8/31/2022	18:06	8.34	2	27.8	800	227.8 BBLS AWAY, LAND PLUG UP TO 1450 PSI
26	CASING TEST	8/31/2022	18:07				1450	HOLD PRESSURE FOR 30 MINS CASING TEST, END TEST AT 1450 PSI
27	SAFETY MEETING	8/31/2022	18:40					RIG DOWN MEETING
28	RIG DOWN	8/31/2022	18:50					RIG DOWN ALL EQUIPMENT
29	SAFETY MEETING	8/31/2022	19:30					JOURNEY MANAGEMENT MEETING
30	DEPART LOCATION	8/31/2022	19:45					CREW DEPARTS LOCATION, ESTIMATED 48 BBLS CEMENT TO SURFACE

Pump Diagrams

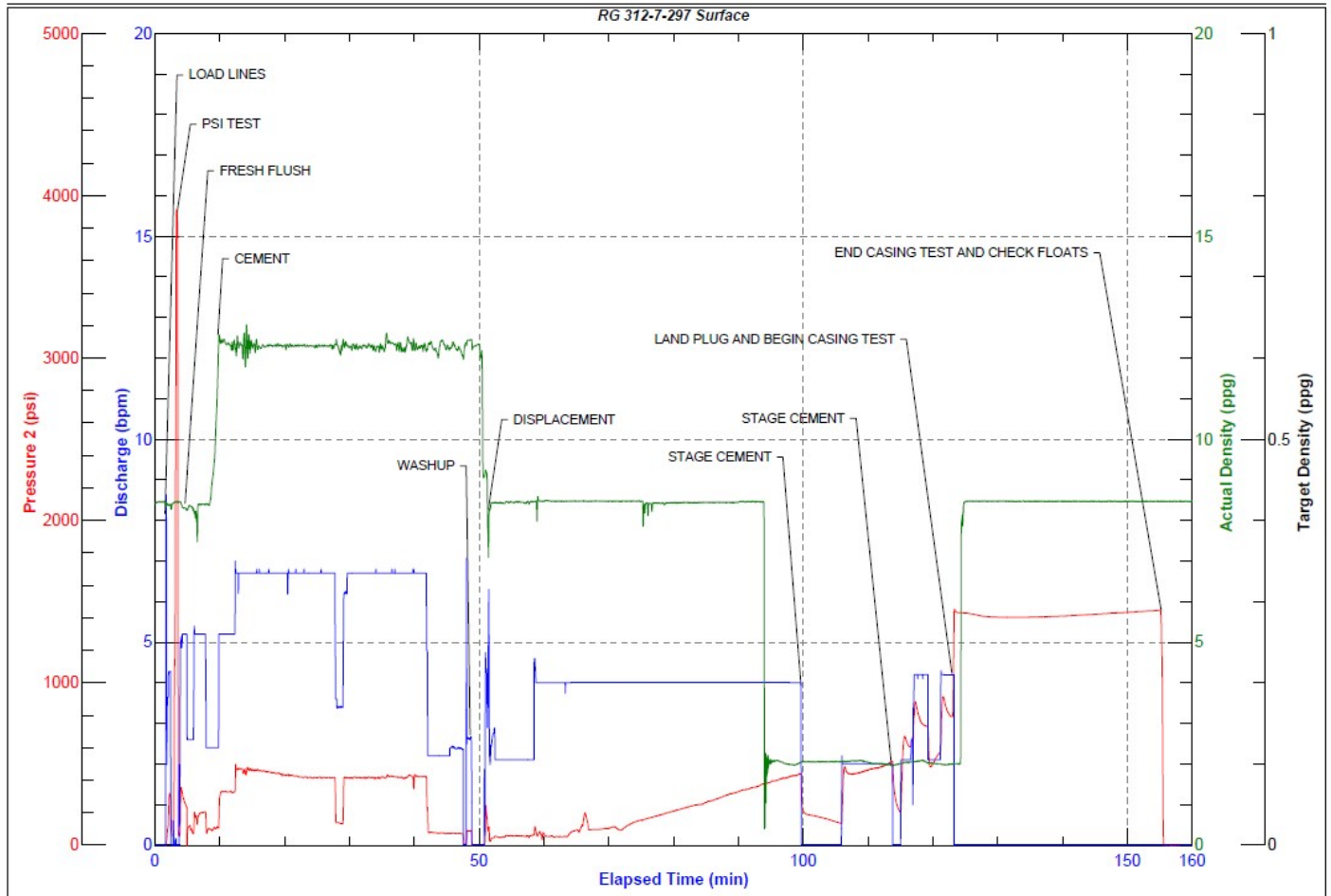


JobMaster Program Version 5.01C1

Job Number: 83215

Customer: Terra

Well Name: RG 312-7-297



Job Start: Wednesday, August 31, 2022