



Terra Energy Partners, LLC

SURFACE POST JOB REPORT

FEDERAL RG 412-7-297 05-103-12476
S:7 T:2S R:97W Rio Blanco CO

CallSheet #: 83193
Proposal #: 62839



SURFACE Post Job Report

Attention: Mr. Dustin Childers | (936) 524-8828 | dchilders@terraep.com
Terra Energy Partners, LLC
4828 Loop Central Dr., Suite 900 | Houston, TX 77081

Dear Mr. Dustin Childers,

Thank you for the opportunity to provide cementing services on this well. American Cementing strives to achieve complete customer satisfaction. If you have any questions regarding the services or data provided, please contact American Cementing at any time.

Sincerely,

Holly Mbugua

Field Engineer II | (720) 505-1300 | holly.mbugua@americancementing.com

Field Office 28730 US-6, Rifle, CO 81650
Phone: (970) 657-1157

Job Details & Summary

Geometry

Type	Function	OD (in)	ID (in)	Weight (lb/ft)	Thread	Top (ft)	Bottom (ft)	Excess (%)
Casing	Outer	20	19.5	53	n/a	0	80	0
Open Hole	Outer	n/a	17.5	n/a	n/a	80	1449	20
Casing	Inner	13.375	12.615	54.5	Buttress	0	1449	0

Equipment / People

Unit Type	Unit	Power Unit	Employee #1	Employee #2
Field Storage Float	FSF(CTF)-389			
AS Cement Trailer Float	CTF-7145	TRC(TRB)-244	Brady, Shawn	
Cement Trailer Float	CTF-286	TRC(TRB)-115	Bradbrook, Jeremy	Balint, Daniel
Cement Pump Float	CPF-091	TRH-082	Brady, Shawn	
Light Duty Vehicles	LDV-062		Lancaster, Stephen	

Timing

Event	Date/Time
Call Out	8/30/2022 00:01
Depart Facility	8/30/2022 08:50
On Location	8/30/2022 10:09
Rig Up Iron	8/30/2022 10:51
Job Started	8/30/2022 12:29
Job Completed	8/30/2022 15:07
Rig Down Iron	8/30/2022 15:08
Depart Location	8/30/2022 15:40

General Job Information

Metrics	Value
Well Fluid Density	9.2 lb/gal
Well Fluid Type	WBM
Rig Circulation Vol	367 bbls
Rig Circulation Time	1 hours
Calculated Displacement	227 bbls
Actual Displacement	227 bbls
Total Spacer to Surface	20 bbls
Total CMT to Surface	8 bbls
Well Topped Out	N/A

Job Details

Metrics	Value
Flare Prior to Job	No
Flare Prior to Job	0 units
Flare During Job	No
Flare During Job	0 units
Flare at End of Job	No
Flare at End of Job	0 units
Well Full Prior to Job	Yes
Well Fluid Density Into Well	9 lb/gal
Well Fluid Density Out of Well	9 lb/gal

Job Details (cont.)

Metrics	Value
BHCT	74 °F
BHST	90 °F

Water Analysis

Metrics	Value	Recommended
Water Source	None	
Temperature	80 °F	50-80 °F
pH Level	7	5.5-8.5
Chlorides	76 mg/L	0-3000 mg/L
Total Alkalinity	130	0-1000
Total Hardness	90 mg/L	0-500 mg/L
Carbonates	NA mg/L	0-100 mg/L
Sulfates	200 mg/L	0-1500 mg/L
Potassium	450 mg/L	0-3000 mg/L
Iron	0 mg/L	0-300 mg/L

Circulation

Lost Circulation Experienced
No

Job Execution Information

Fluid	Product	Function	Density (lb/gal)	Yield (ft ³ /sk)	Water Rq. (gal/sk)	Water Rq. (gal/bbl)	Volume (sks)	Volume (bbl)	Designed Top (ft)
1	Water	Flush	8.34			42.00		20.00	0
2	Primary Cement	Primary	12.30	2.34	13.42		542.00	225.74	0
3	Water	DisplacementFinal	8.34			42.00		218.00	0

Job Fluid Details

Fluid	Type	Fluid	Product	Function	Conc.	Uom
2	Primary	Primary Cement	ASTM TYPE I/II	Cement	100.00	%
2	Primary	Primary Cement	A-10	Accelerator	5.00	%BWOB
2	Primary	Primary Cement	A-2	Accelerator	2.00	lb/sk
2	Primary	Primary Cement	A-7P	Accelerator	2.00	lb/sk
2	Primary	Primary Cement	FP-24	Defoamer	0.30	%BWOB
2	Primary	Primary Cement	IntegraSeal POLI	LostCirculation	0.25	lb/sk
2	Primary	Primary Cement	STATIC FREE	Other	0.01	lb/sk

Job Logs

Line	Event	Date (MM/DD/YY)	Time (HH:MM)	Density (lb/gal)	Pump Rate (bpm)	Pump Volume (bbls)	Pipe Pressure (psi)	Comment
1	Callout	8/30/2022	00:01					Callout for on location time of 4:00
2	Depart For Location	8/30/2022	08:50					Leave Rifle yard for location
3	Arrive On Location	8/30/2022	10:09					Arrive on location, rig preparing to run casing
4	Spot Equipment	8/30/2022	10:50					Spot in all equipment
5	Rig Up Iron	8/30/2022	10:51					Pre-rig up safety meeting, rig in all equipment and lines to the standpipe
6	Safety Meeting	8/30/2022	12:29					Pre job safety meeting with company man
7	Fill Lines	8/30/2022	12:31					
8	Pressure Test Lines	8/30/2022	12:33	8.34	4	20	193	Pumping freshwater spacer, returns
9	Pump Spacer	8/30/2022	12:36				3000	Pressure test
10	Pump Primary Cement	8/30/2022	12:38	12.3	7	5	305	Pumping primary cement
11	Pump Primary Cement	8/30/2022	12:45	12.3	7	50	468	Pumping primary cement
12	Pump Primary Cement	8/30/2022	12:53	12.3	5	100	256	Pumping primary cement
13	Pump Primary Cement	8/30/2022	13:02	12.3	7	150	473	Pumping primary cement
14	Pump Primary Cement	8/30/2022	13:10	12.3	7.5	200	476	Pumping primary cement
15	Pump Primary Cement	8/30/2022	13:13	12.3	5.2	226	311	Pumping primary cement
16	Drop Plug	8/30/2022	13:16					Dropped top plug verified by company man
17	Pump Displacement	8/30/2022	13:17	8.34	4.7	20	197	Pumping freshwater displacement
18	Pump Displacement	8/30/2022	13:30	8.34	4.4	50	177	Pumping freshwater displacement;
19	Pump Displacement	8/30/2022	13:39	8.34	4.7	100	170	Pumping freshwater displacement;
20	Pump Displacement	8/30/2022	13:51	8.34	4.7	150	310	Pumping freshwater displacement
21	Pump Displacement	8/30/2022	14:10	8.34	4.7	190	391	Pumping freshwater displacement
22	Shutdown	8/30/2022	14:10					Shutdown
23	Pump Displacement	8/30/2022	14:15	8.34	2	200	420	Pumping displacement
24	Shutdown	8/30/2022	14:20					Shutdown
24	Pump Displacement	8/30/2022	14:25	8.34	2	210	474	
25	Pump Displacement	8/30/2022	14:28		2	222	658	Cement to surface @ 222 bbls pumped, total to surface 8 bbls
26	Land Plug	8/30/2022	14:32		2	230	1120	Land plug @ 14:32
27	Start Csg Test	8/30/2022	14:32					Start csg test @ 14:32
28	Bleed press	8/30/2022	15:07					Bleed off, floats holding 1 bbl back
29	Rig Up Iron	8/30/2022	15:08					Rig down iron
30	Depart Location	8/30/2022	15:40					

Pump Diagrams

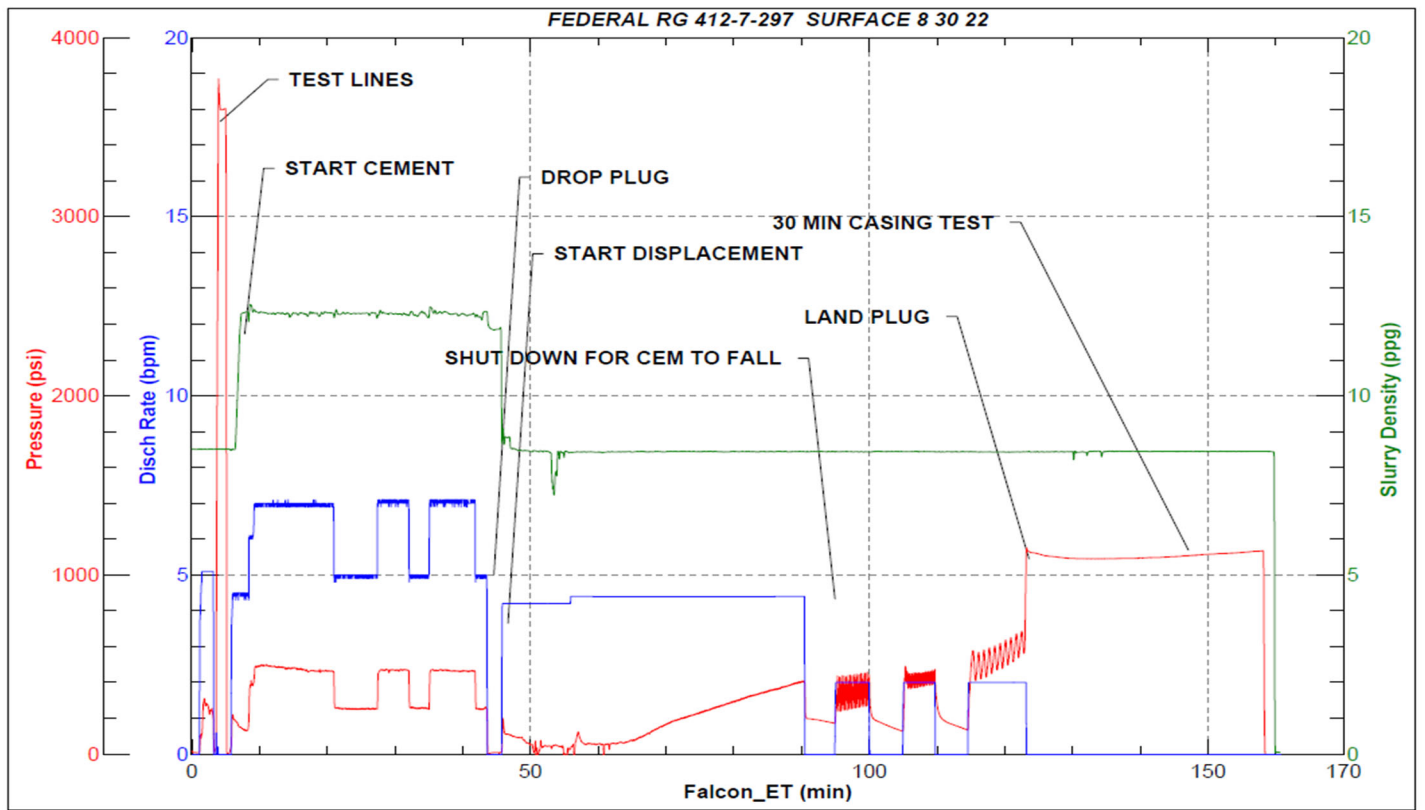


JobMaster Program Version 5.01C1

Job Number: 83193

Customer: TERRA

Well Name: FEDERAL RG 412-7-297



Job Start: Tuesday, August 30, 2022