



Terra Energy Partners, LLC

SURFACE POST JOB REPORT

FEDERAL RG 13-7-297 05-103-12481
S:7 T:2S R:97W Rio Blanco CO

CallSheet #: 83151
Proposal #: 62765



SURFACE Post Job Report

Attention: Mr. Dustin Childers | (936) 524-8828 | dchilders@terraep.com
Terra Energy Partners, LLC
4828 Loop Central Dr., Suite 900 | Houston, TX 77081

Dear Mr. Dustin Childers,

Thank you for the opportunity to provide cementing services on this well. American Cementing strives to achieve complete customer satisfaction. If you have any questions regarding the services or data provided, please contact American Cementing at any time.

Sincerely,

Holly Mbugua

Field Engineer II | (720) 505-1300 | holly.mbugua@americacementing.com

Field Office 28730 US-6, Rifle, CO 81650
Phone: (970) 657-1157

Job Details & Summary

Geometry

Type	Function	OD (in)	ID (in)	Weight (lb/ft)	Thread	Top (ft)	Bottom (ft)	Excess (%)
Casing	Outer	20	19.5	53	n/a	0	102	0
Open Hole	Outer	n/a	17.5	n/a	n/a	102	1447	20
Casing	Inner	13.375	12.615	54.5	Buttress	0	1447	0

Equipment / People

Unit Type	Unit	Power Unit	Employee #1
Field Storage Float	FSF(CTF)-389		
AS Cement Trailer Float	CTF-9898	TRH(TRB)-769	Hale, Jason
Cement Trailer Float	CTF-254	TRC(TRB)-425	Bradbrook, Jeremy
Cement Pump Float	CPF-091	TRH-082	Carrasco, Joel
Light Duty Vehicles	LDV-082		Kelsey, John

Timing

Event	Date/Time
Call Out	8/27/2022 18:00
Depart Facility	8/27/2022 22:10
On Location	8/27/2022 23:45
Rig Up Iron	8/28/2022 00:20
Job Started	8/28/2022 04:03
Job Completed	8/28/2022 06:30
Rig Down Iron	8/28/2022 06:40
Depart Location	8/28/2022 08:00

General Job Information

Metrics	Value
Well Fluid Density	9.2 lb/gal
Well Fluid Type	WBM
Rig Circulation Vol	200 bbls
Rig Circulation Time	0.5 hours
Calculated Displacement	220.4 bbls
Actual Displacement	220.4 bbls
Total Spacer to Surface	20 bbls
Total CMT to Surface	35 bbls
Well Topped Out	N/A

Job Details

Metrics	Value
Flare Prior to Job	No
Flare Prior to Job	0 units
Flare During Job	No
Flare During Job	0 units
Flare at End of Job	No
Flare at End of Job	0 units
Well Full Prior to Job	Yes
Well Fluid Density Into Well	9.2 lb/gal
Well Fluid Density Out of Well	9.2 lb/gal

Job Details (cont.)

Metrics	Value
BHCT	74 °F
BHST	90 °F

Water Analysis

Metrics	Value	Recommended
Water Source	Flat Tank	
Temperature	70 °F	50-80 °F
pH Level	6	5.5-8.5
Chlorides	0 mg/L	0-3000 mg/L
Total Alkalinity	80	0-1000
Total Hardness	400 mg/L	0-500 mg/L
Carbonates	0 mg/L	0-100 mg/L
Sulfates	<200 mg/L	0-1500 mg/L
Potassium	0 mg/L	0-3000 mg/L
Iron	0 mg/L	0-300 mg/L

Circulation

Lost Circulation Experienced
No

Job Execution Information

Fluid	Product	Function	Density (lb/gal)	Yield (ft ³ /sk)	Water Rq. (gal/sk)	Water Rq. (gal/bbl)	Volume (sks)	Volume (bbl)	Designed Top (ft)
1	Water	Flush	8.34			42.00		20.00	0
2	Primary Cement	Primary	12.30	2.34	13.42		531.00	221.16	0
3	Water	DisplacementFinal	8.34			42.00		220.50	0

Job Fluid Details

Fluid	Type	Fluid	Product	Function	Conc.	Uom
2	Primary	Primary Cement	ASTM TYPE I/II	Cement	100.00	%
2	Primary	Primary Cement	A-10	Accelerator	5.00	%BWOB
2	Primary	Primary Cement	A-2	Accelerator	2.00	lb/sk
2	Primary	Primary Cement	A-7P	Accelerator	2.00	lb/sk
2	Primary	Primary Cement	FP-24	Defoamer	0.30	%BWOB
2	Primary	Primary Cement	IntegraSeal POLI	LostCirculation	0.25	lb/sk
2	Primary	Primary Cement	STATIC FREE	Other	0.01	lb/sk

Job Logs

Line	Event	Date (MM/DD/YY)	Time (HH:MM)	Density (lb/gal)	Pump Rate (bpm)	Pump Volume (bbls)	Pipe Pressure (psi)	Comment
1	CALLOUT	8/27/2022	18:00					CREW CALLED TO PREPARE FOR A SURFACE CEMENT JOB. RTS IS 01:30 ON 8-28-22
2	SAFETY MEETING	8/27/2022	22:00					JOURNEY MANAGEMENT MEETING
3	DEPART YARD	8/27/2022	22:10					CREW DEPARTS RIFLE, CO YARD FOR LOCATION
4	ARRIVE ON LOCATION	8/27/2022	23:45					ARRIVE ON LOCATION, VERIFY ALL PROPER EQUIPMENT, PRODUCTS AND JOB PROCEDURES WITH CUSTOMER
5	SAFETY MEETING	8/28/2022	00:00					PRE-RIG UP MEETING
6	SPOT UNITS	8/28/2022	00:10					SPOT EQUIPMENT FOR RIG UP
7	RIG UP	8/28/2022	00:20					RIG UP ALL EQUIPMENT
8	STANDBY	8/28/2022	01:30					CREW ON STANDBY WHILE RIG RUNS CASING AND CIRCULATES
9	SAFETY MEETING	8/28/2022	03:50					PRE JOB-MEETING WITH ALL CREWS INVOLVED
10	LOAD LINES	8/28/2022	04:03	8.34	3	3	185	LOAD LINES FOR PSI TEST
11	PRESSURE TEST	8/28/2022	04:04	8.34	1	1	3200	PSI TEST PUMP AND LINES TO CEMENT HEAD
12	SPACER	8/28/2022	04:08	8.34	5.6	20	357	
13	PUMP CEMENT	8/28/2022	04:14	12.3	5.6	10	353	221 BBLS Primary CMT – 12.3 # 2.34 Y 13.4 MW 531 sks (170 BBLS H2O) 10 BBLS AWAY
14	PUMP CEMENT	8/28/2022	04:22	12.3	8	40	647	50 BBLS AWAY
15	PUMP CEMENT	8/28/2022	04:29	12.3	5.6	50	335	100 BBLS AWAY
16	PUMP CEMENT	8/28/2022	04:37	12.3	5.6		340	150 BBLS AWAY
17	PUMP CEMENT	8/28/2022	04:45	12.3	5.6	50	343	200 BBLS AWAY
18	PUMP CEMENT	8/28/2022	04:53	12.3	5.6	21	340	221 BBLS AWAY SHUTDOWN FOR WASHUP
19	WASHUP	8/28/2022	04:54					WASHUP MIX SYSTEM AND DROP PLUG
20	DISPLACEMENT	8/28/2022	05:00	8.34	4	10	142	SEND PLUG AND BEGIN DISPLACEMENT 10 BBLS AWAY
21	DISPLACEMENT	8/28/2022	05:11	8.34	9	40	511	50 BBLS AWAY
22	DISPLACEMENT	8/28/2022	05:17	8.34	9	50	598	100 BBLS AWAY
23	DISPLACEMENT	8/28/2022	05:23	8.34	9	50	793	150 BBLS AWAY
24	DISPLACEMENT	8/28/2022	05:28	8.34	9	50	821	200 BBLS AWAY SHUTDOWN TO HESITATE CEMENT FOR 5 MINS
25	DISPLACEMENT	8/28/2022	05:35	8.34	2	10	473	210 BBLS AWAY SHUTDOWN TO HESITATE CEMENT FOR 5 MINS
26	DISPLACEMENT	8/28/2022	05:48	8.34	2	5	421	215 BBLS AWAY SHUTDOWN TO HESITATE CEMENT FOR 5 MINS
27	LAND PLUG	8/28/2022	05:51	8.34	2	5.4	534	220.4 BBLS AWAY LAND PLUG
28	CASING TEST	8/28/2022	05:58				1110	30 MIN CASING TEST from 1110 psi to 1057 psi
29	CHECK FLOATS	8/28/2022	06:29					CHECK FLOATS, FLOATS HELD WITH .5 BBLS BACK
30	SAFETY MEETING	8/28/2022	06:30					RIG DOWN SAFETY MEETING
31	RIG DOWN	8/28/2022	06:40					RIG DOWN EQUIPMENT
32	SAFETY MEETING	8/28/2022	07:45					JOURNEY MANAGEMENT MEETING
33	DEPART LOCATION	8/28/2022	08:00					CREW DEPARTS LOCATION ESTIMATED 35 BBLS CEMENT TO SURFACE

Pump Diagrams

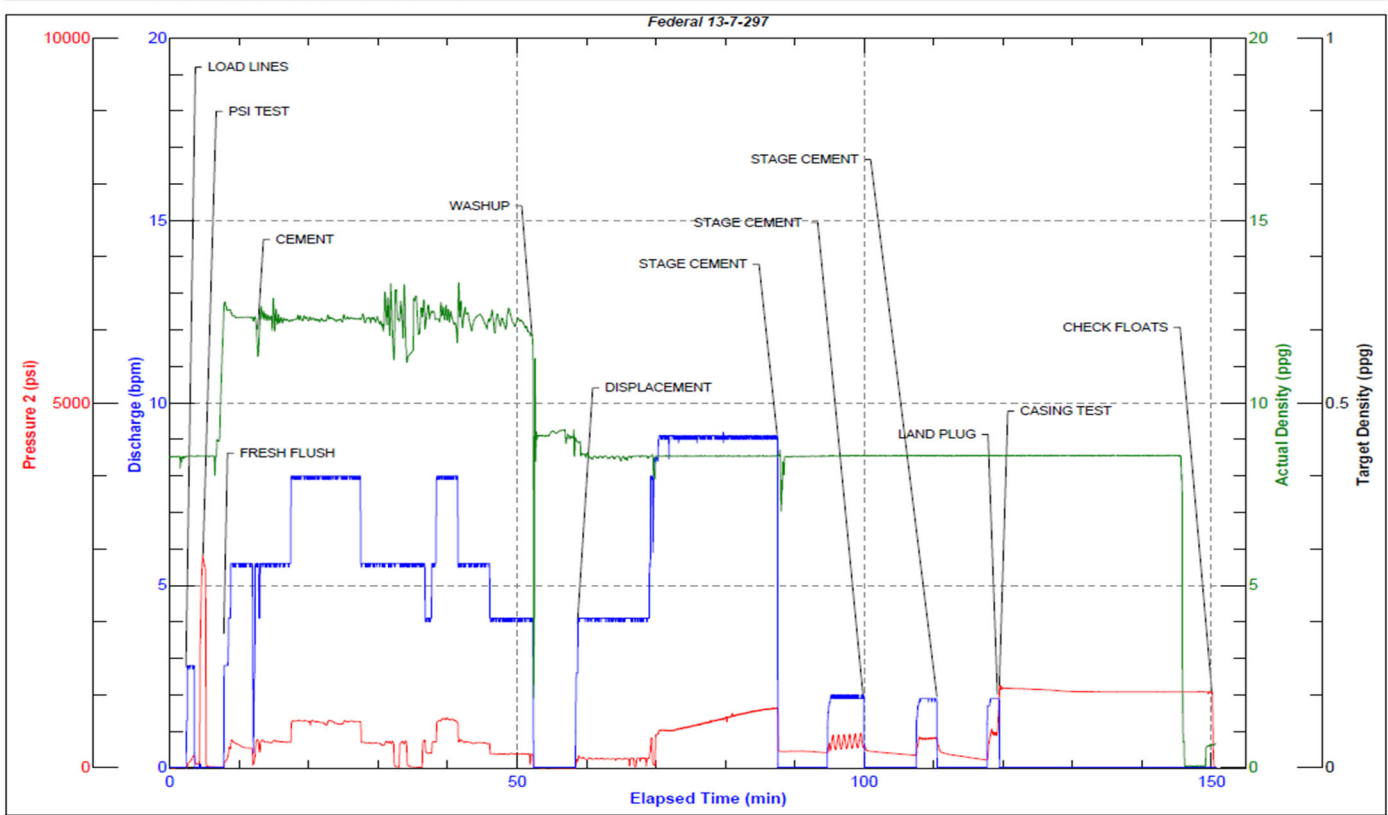


JobMaster Program Version 5.01C1

Job Number: 83151

Customer: Terra

Well Name: Federal 13-7-297



Job Start: Sunday, August 28, 2022