



Terra Energy Partners, LLC

SURFACE POST JOB REPORT

FEDERAL RG 313-7-297 05-103-12479
S:7 T:2S R:97W Rio Blanco CO

CallSheet #: 83150
Proposal #: 62764



SURFACE Post Job Report

Attention: Mr. Dustin Childers | (936) 524-8828 | dchilders@terraep.com
Terra Energy Partners, LLC
4828 Loop Central Dr., Suite 900 | Houston, TX 77081

Dear Mr. Dustin Childers,

Thank you for the opportunity to provide cementing services on this well. American Cementing strives to achieve complete customer satisfaction. If you have any questions regarding the services or data provided, please contact American Cementing at any time.

Sincerely,

Holly Mbugua

Field Engineer II | (720) 505-1300 | holly.mbugua@americacementing.com

Field Office 28730 US-6, Rifle, CO 81650
Phone: (970) 657-1157

Job Details & Summary

Geometry

Type	Function	OD (in)	ID (in)	Weight (lb/ft)	Thread	Top (ft)	Bottom (ft)	Excess (%)
Casing	Outer	20	19.5	53	n/a	0	80	0
Open Hole	Outer	n/a	17.5	n/a	n/a	80	1410	20
Casing	Inner	13.375	12.615	54.5	Buttress	0	1413.96	0

Equipment / People

Unit Type	Unit	Power Unit	Employee #1
Field Storage Float	FSF(CTF)-389		
AS Cement Trailer Float	CTF-558	TRC(TRB)-053	Woronovitch, Collin
Cement Trailer Float	CTF-007	TRC(TRB)-112	Mendoza, Victor
Light Duty Vehicles	LDV-083		Castillo, Francisco
Cement Pump Float	CPF-091	TRH-082	Hale, Jason
Tractors	TRH-082		

Timing

Event	Date/Time
Call Out	8/26/2022 19:00
Depart Facility	8/26/2022 20:00
On Location	8/26/2022 21:25
Rig Up Iron	8/26/2022 21:45
Job Started	8/27/2022 01:18
Job Completed	8/27/2022 03:47
Rig Down Iron	8/27/2022 04:00
Depart Location	8/27/2022 05:00

General Job Information

Metrics	Value
Well Fluid Density	9.4 lb/gal
Well Fluid Type	WBM
Rig Circulation Vol	300 bbls
Rig Circulation Time	0.5 hours
Calculated Displacement	215 bbls
Actual Displacement	215 bbls
Total Spacer to Surface	20 bbls
Total CMT to Surface	45 bbls
Well Topped Out	No

Job Details

Metrics	Value
Flare Prior to Job	No
Flare Prior to Job	0 units
Flare During Job	No
Flare During Job	0 units
Flare at End of Job	No
Flare at End of Job	0 units
Well Full Prior to Job	Yes
Well Fluid Density Into Well	9.4 lb/gal
Well Fluid Density Out of Well	9.4 lb/gal

Job Details (cont.)

Metrics	Value
BHCT	74 °F
BHST	89 °F

Water Analysis

Metrics	Value	Recommended
Water Source	None	
Temperature	73 °F	50-80 °F
pH Level	6	5.5-8.5
Chlorides	0 mg/L	0-3000 mg/L
Total Alkalinity	240	0-1000
Total Hardness	250 mg/L	0-500 mg/L
Carbonates	0 mg/L	0-100 mg/L
Sulfates	200 mg/L	0-1500 mg/L
Potassium	250 mg/L	0-3000 mg/L
Iron	0 mg/L	0-300 mg/L

Circulation

Lost Circulation Experienced
No

Job Execution Information

Fluid	Product	Function	Density (lb/gal)	Yield (ft ³ /sk)	Water Rq. (gal/sk)	Water Rq. (gal/bbl)	Volume (sks)	Volume (bbl)	Designed Top (ft)
1	Water	Flush	8.34			42.00		20.00	0
2	Primary Cement	Primary	12.30	2.34	13.42		526.00	219.08	0
3	Water	DisplacementFinal	8.34			42.00		215.00	0

Job Fluid Details

Fluid	Type	Fluid	Product	Function	Conc.	Uom
2	Primary	Primary Cement	ASTM TYPE I/II	Cement	100.00	%
2	Primary	Primary Cement	A-10	Accelerator	5.00	%BWOB
2	Primary	Primary Cement	A-2	Accelerator	2.00	lb/sk
2	Primary	Primary Cement	A-7P	Accelerator	2.00	lb/sk
2	Primary	Primary Cement	FP-24	Defoamer	0.30	%BWOB
2	Primary	Primary Cement	IntegraSeal POLI	LostCirculation	0.25	lb/sk
2	Primary	Primary Cement	STATIC FREE	Other	0.01	lb/sk

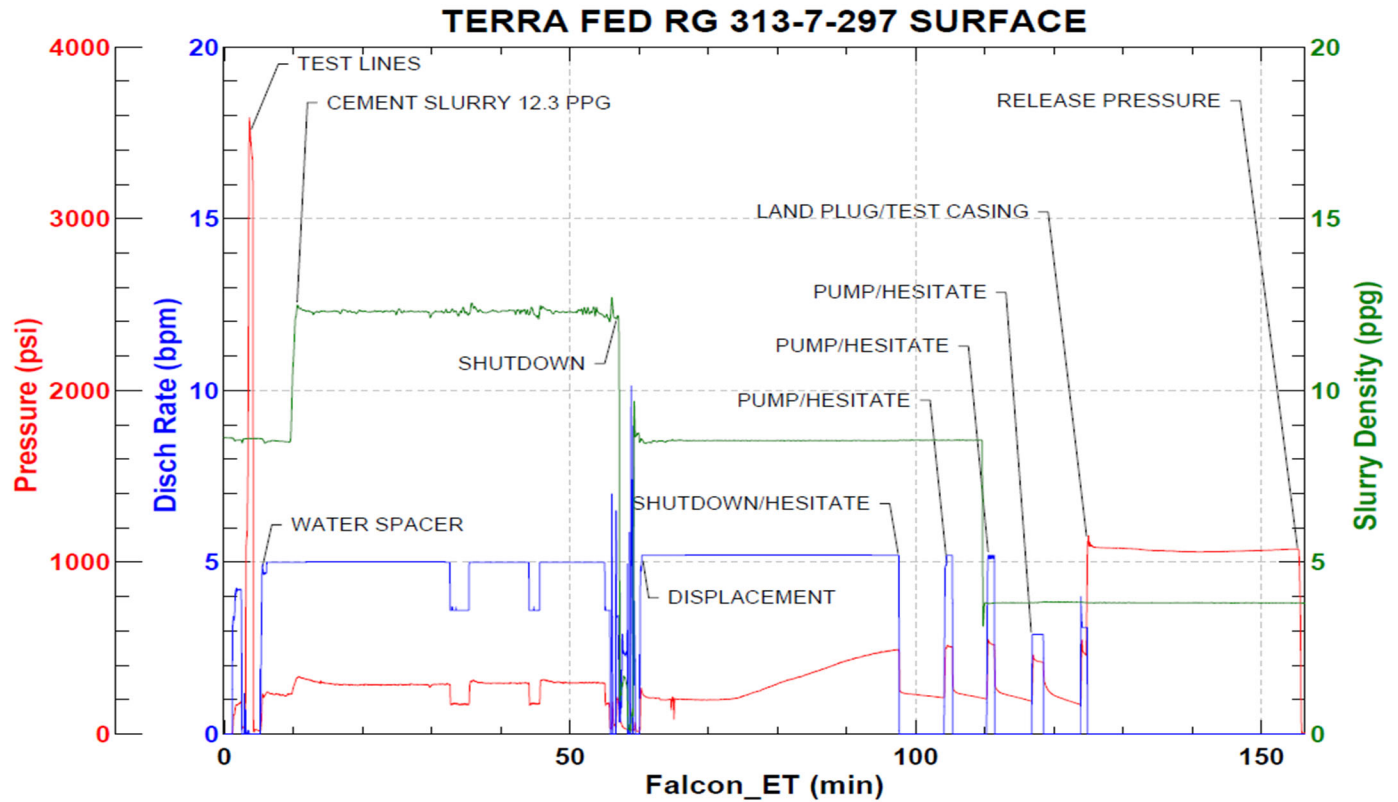
Job Logs

Line	Event	Date (MM/DD/YY)	Time (HH:MM)	Density (lb/gal)	Pump Rate (bpm)	Pump Volume (bbls)	Pipe Pressure (psi)	Comment
1	CALLOUT	8/26/2022	19:00					ON LOCATION AT 22:00 HRS
2	LEAVE THE YARD	8/26/2022	20:00					CREW LEAVE THE YARD
3	ON LOCATION	8/26/2022	21:25					CREW ON LOCATION
4	RIG UP	8/26/2022	21:45					RIG UP MEETING, RIG UP
5	SAFETY MEETING	8/27/2022	01:00					PRE-JOB SAFETY MEETING
6	PRESSURE TEST	8/27/2022	01:15				3500	PRESSURE TEST LINES
7	PUMP SPACER	8/27/2022	01:18	8.34	5	20	233	WATER SPACER
8	PUMP CEMENT	8/27/2022	01:22	12.3	5	50	289	526 SKS/219 BBLS AT 12.3 PPG
9	PUMP CEMENT	8/27/2022	01:32	12.3	5	50	285	100 BBLS CEMENT PUMPED
10	PUMP CEMENT	8/27/2022	01:42	12.3	5	50	295	150 BBLS CEMENT PUMPED
11	PUMP CEMENT	8/27/2022	01:52	12.3	5	69	303	219 BBLS CEMENT PUMPED
12	SHUTDOWN	8/27/2022	02:09					SHUTDOWN, DROP PLUG
13	DISPLACEMENT	8/27/2022	02:13	8.34	5	50	205	DISPLACEMENT WATER
14	DISPLACEMENT	8/27/2022	02:22	8.34	5	50	281	100 BBLS DISPLACEMENT PUMPED
15	DISPLACEMENT	8/27/2022	02:31	8.34	5	50	415	150 BBLS DISPLACEMENT PUMPED
16	DISPLACEMENT	8/27/2022	02:41	8.34	5	45	489	195 BBLS DISPLACEMENT PUMPED
17	SHUTDOWN	8/27/2022	02:49					SHUTDOWN, HESITATE
18	DISPLACEMENT	8/27/2022	02:56	8.34	5	5	511	200 BBLS DISPLACEMENT PUMPED
19	SHUTDOWN	8/27/2022	02:57					SHUTDOWN, HESITATE
20	DISPLACEMENT	8/27/2022	03:02	8.34	5	5	553	205 BBLS DISPLACEMENT PUMPED
21	SHUTDOWN	8/27/2022	03:03					SHUTDOWN, HESITATE
22	DISPLACEMENT	8/27/2022	03:08	8.34	3	5	261	210 BBLS DISPLACEMENT PUMPED
23	SHUTDOWN	8/27/2022	03:10					SHUTDOWN, HESITATE
24	DISPLACEMENT	8/27/2022	03:15	8.34	3	5	473	215 BBLS DISPLACEMENT PUMPED
25	LAND PLUG	8/27/2022	03:16				1109	LAND PLUG, TEST CASING, 45 BBLS CEMENT TO SURFACE
26	CHECK FLOATS	8/27/2022	03:47					FLOATS HELD, 0.75 BBL FLOW BACK
27	RIG DOWN	8/27/2022	04:00					RIG DOWN MEETING, RIG DOWN
28	LEAVE LOCATION	8/27/2022	05:00					CREW LEAVE LOCATION

Pump Diagrams



JobMaster Program Version 5.01C1
Job Number: 83150
Customer: TERRA
Well Name: FED RG 313-7-297



Job Start: Saturday, August 27, 2022