



Terra Energy Partners, LLC

SURFACE POST JOB REPORT

FEDERAL RG 414-7-297 05-103-12488
S:7 T:2S R:97W Rio Blanco CO

CallSheet #: 83097
Proposal #: 62685



SURFACE Post Job Report

Attention: Mr. Jayson Boebert | (970) 274-2569 | jboebert@terraep.com
Terra Energy Partners, LLC
4828 Loop Central Dr., Suite 900 | Houston, TX 77081

Dear Mr. Jayson Boebert,

Thank you for the opportunity to provide cementing services on this well. American Cementing strives to achieve complete customer satisfaction. If you have any questions regarding the services or data provided, please contact American Cementing at any time.

Sincerely,

Holly Mbugua

Field Engineer II | (720) 505-1300 | holly.mbugua@americancementing.com

Field Office 28730 US-6, Rifle, CO 81650
Phone: (970) 657-1157

Job Details & Summary

Geometry

Type	Function	OD (in)	ID (in)	Weight (lb/ft)	Thread	Top (ft)	Bottom (ft)	Excess (%)
Casing	Outer	20	19.5	53	n/a	0	102	0
Open Hole	Outer	n/a	17.5	n/a	n/a	80	1387	30
Casing	Inner	13.375	12.615	54.5	Buttress	0	1392.29	0

Equipment / People

Unit Type	Unit	Power Unit	Employee #1	Employee #2
Field Storage Float	FSF(CTF)-389			
AS Cement Trailer Float	CTF-558	TRC(TRB)-090	Lewis, Kevin	Kirchenwitz, Jacob
Cement Trailer Float	CTF-340	TRC(TRB)-201	Hutchinson, Michael	
Light Duty Vehicles	LDV-083		Castillo, Francisco	
Cement Pump Float	CPF-091	TRH-082	Hale, Jason	

Timing

Event	Date/Time
Call Out	8/24/2022 09:00
Depart Facility	8/24/2022 12:00
On Location	8/24/2022 13:15
Rig Up Iron	8/24/2022 13:30
Job Started	8/24/2022 16:00
Job Completed	8/24/2022 18:32
Rig Down Iron	8/24/2022 18:45
Depart Location	8/24/2022 20:00

General Job Information

Metrics	Value
Well Fluid Density	9.2 lb/gal
Well Fluid Type	WBM
Rig Circulation Vol	300 bbls
Rig Circulation Time	0.5 hours
Calculated Displacement	208 bbls
Actual Displacement	208 bbls
Total Spacer to Surface	20 bbls
Total CMT to Surface	68 bbls
Well Topped Out	No

Job Details

Metrics	Value
Flare Prior to Job	No
Flare Prior to Job	0 units
Flare During Job	No
Flare During Job	0 units
Flare at End of Job	No
Flare at End of Job	0 units
Well Full Prior to Job	Yes
Well Fluid Density Into Well	9.2 lb/gal
Well Fluid Density Out of Well	9.2 lb/gal

Job Details (cont.)

Metrics	Value
BHCT	73 °F
BHST	89 °F

Water Analysis

Metrics	Value	Recommended
Water Source	None	
Temperature	73 °F	50-80 °F
pH Level	6	5.5-8.5
Chlorides	0 mg/L	0-3000 mg/L
Total Alkalinity	240	0-1000
Total Hardness	250 mg/L	0-500 mg/L
Carbonates	0 mg/L	0-100 mg/L
Sulfates	200 mg/L	0-1500 mg/L
Potassium	250 mg/L	0-3000 mg/L
Iron	0 mg/L	0-300 mg/L

Circulation

Lost Circulation Experienced
No

Job Execution Information

Fluid	Product	Function	Density (lb/gal)	Yield (ft ³ /sk)	Water Rq. (gal/sk)	Water Rq. (gal/bbl)	Volume (sks)	Volume (bbl)	Designed Top (ft)
1	Water	Flush	8.34			42.00		20.00	0
2	Primary Cement	Primary	12.30	2.34	13.42		555.00	231.16	0
3	Water	DisplacementFinal	8.34			42.00		208.00	0

Job Fluid Details

Fluid	Type	Fluid	Product	Function	Conc.	Uom
2	Primary	Primary Cement	ASTM TYPE I/II	Cement	100.00	%
2	Primary	Primary Cement	A-10	Accelerator	5.00	%BWOB
2	Primary	Primary Cement	A-2	Accelerator	2.00	lb/sk
2	Primary	Primary Cement	A-7P	Accelerator	2.00	lb/sk
2	Primary	Primary Cement	FP-24	Defoamer	0.30	%BWOB
2	Primary	Primary Cement	IntegraSeal POLI	LostCirculation	0.25	lb/sk
2	Primary	Primary Cement	STATIC FREE	Other	0.01	lb/sk

Job Logs

Line	Event	Date (MM/DD/YY)	Time (HH:MM)	Density (lb/gal)	Pump Rate (bpm)	Pump Volume (bbls)	Pipe Pressure (psi)	Comment
1	CALLOUT	8/24/2022	09:00					ON LOCATION AT 15:30 HRS
2	LEAVE YARD	8/24/2022	12:00					CREW LEAVE THE YARD
3	ON LOCATION	8/24/2022	13:15					CREW ON LOCATION
4	RIG UP	8/24/2022	13:30					RIG UP MEETING, RIG UP
5	SAFETY MEETING	8/24/2022	15:30					PRE-JOB SAFETY MEETING
6	PRESSURE TEST	8/24/2022	15:57				3900	PRESSURE TEST LINES
7	PUMP SPACER	8/24/2022	16:00	8.34	5.5	20	461	WATER SPACER
8	PUMP CEMENT	8/24/2022	16:05	12.3	5	50	613	555 SKS/231 BBLS AT 12.3 PPG
9	PUMP CEMENT	8/24/2022	16:15	12.3	5	50	615	100 BBLS CEMENT PUMPED
10	PUMP CEMENT	8/24/2022	16:27	12.3	5	50	607	150 BBLS CEMENT PUMPED
11	PUMP CEMENT	8/24/2022	16:37	12.3	5	81	621	231 BBLS CEMENT PUMPED
12	SHUTDOWN	8/24/2022	16:53					SHUTDOWN, DROP PLUG
13	DISPLACEMENT	8/24/2022	16:56	8.34	5	50	373	DISPLACEMENT WATER
14	DISPLACEMENT	8/24/2022	17:07	8.34	5	50	463	100 BBLS DISPLACEMENT PUMPED
15	DISPLACEMENT	8/24/2022	17:17	8.34	5	50	581	150 BBLS DISPLACEMENT PUMPED
16	DISPLACEMENT	8/24/2022	17:26	8.34	4	40	587	190 BBLS DISPLACEMENT PUMPED
17	SHUTDOWN	8/24/2022	17:36					SHUTDOWN, HESITATE
18	DISPLACEMENT	8/24/2022	17:40	8.34	3	5	681	DISPLACE 5 BBLS
19	SHUTDOWN	8/24/2022	17:43					SHUTDOWN AT 195 BBLS, HESITATE
20	DISPLACEMENT	8/24/2022	17:47	8.34	3	5	713	DISPLACE 5 BBLS
21	SHUTDOWN	8/24/2022	17:50					SHUTDOWN AT 200 BBLS, HESITATE
22	DISPLACEMENT	8/24/2022	17:55	8.34	3	8	607	DISPLACE LAST 8 BBLS
23	LAND PLUG	8/24/2022	18:00				1071	LAND PLUG, TEST CASING
24	CHECK FLOATS	8/24/2022	18:32					FLOATS HELD, 1 BBL FLOW BACK
25	RIG DOWN	8/24/2022	18:45					RIG DOWN MEETING, RIG DOWN
26	LEAVE LOCATION	8/24/2022	20:00					CREW LEAVE LOCATION
27	OTHER	8/24/2022	20:01					60 BBLS CEMENT TO SURFACE

Pump Diagrams



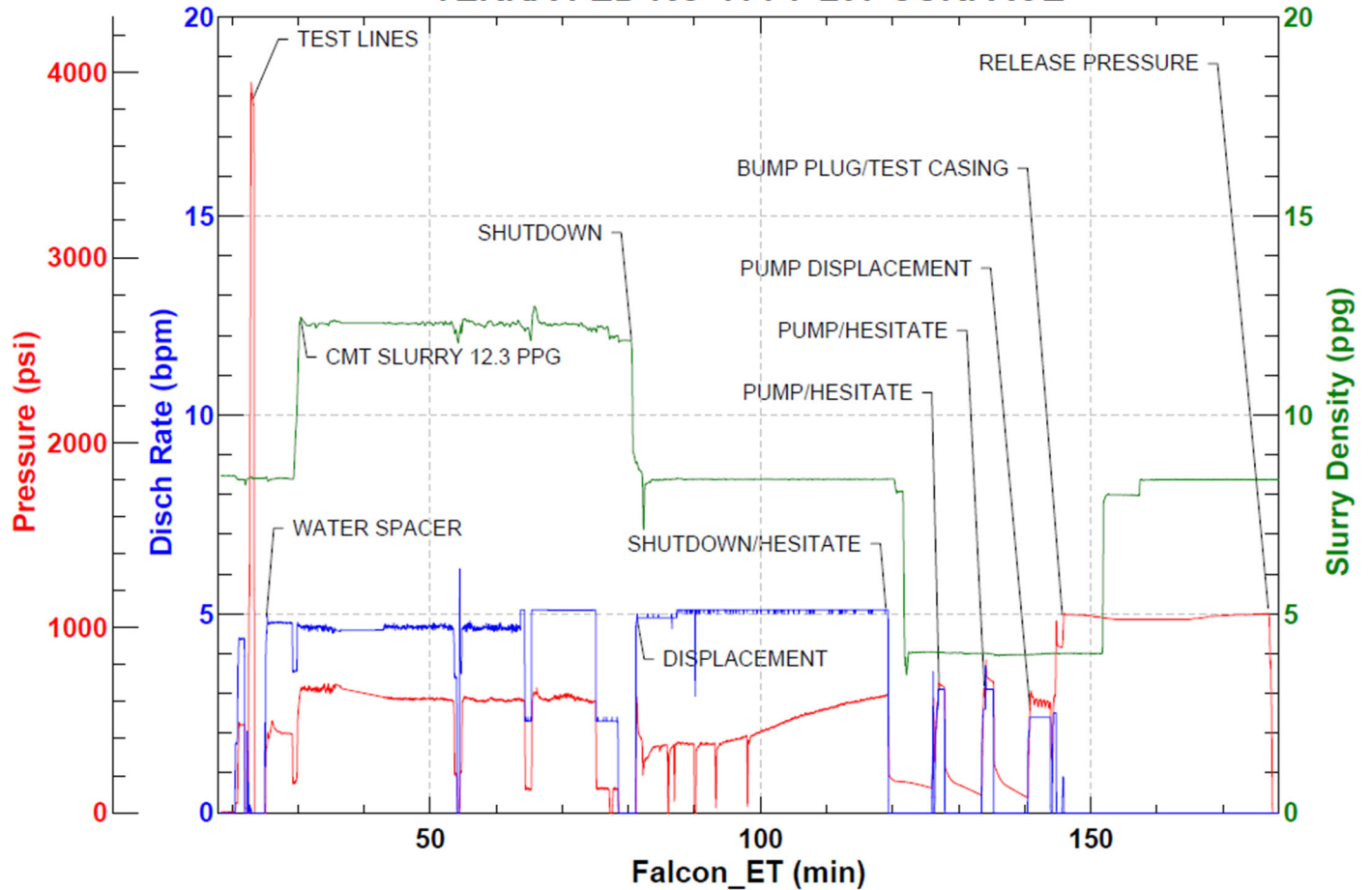
JobMaster Program Version 5.01C1

Job Number: 83097

Customer: TERRA

Well Name: FED RG 414-7-297

TERRA FED RG 414-7-297 SURFACE



Job Start: Wednesday, August 24, 2022