



Terra Energy Partners, LLC

SURFACE POST JOB REPORT

FEDERAL RG 514-7-297 05-103-12483
S:7 T:2S R:97W Rio Blanco CO

CallSheet #: 83060
Proposal #: 62631



SURFACE Post Job Report

Attention: Mr. Jayson Boebert | (970) 274-2569 | jboebert@terraep.com
Terra Energy Partners, LLC
4828 Loop Central Dr., Suite 900 | Houston, TX 77081

Dear Mr. Jayson Boebert,

Thank you for the opportunity to provide cementing services on this well. American Cementing strives to achieve complete customer satisfaction. If you have any questions regarding the services or data provided, please contact American Cementing at any time.

Sincerely,

Krystal Schell

Field Engineer I | (719) 992-1830 | krystal.schell@americacementing.com

Field Office 28730 US-6, Rifle, CO 81650
Phone: (970) 657-1157

Job Details & Summary

Geometry

Type	Function	OD (in)	ID (in)	Weight (lb/ft)	Thread	Top (ft)	Bottom (ft)	Excess (%)
Casing	Outer	20	19.5	53	n/a	0	85	0
Open Hole	Outer	n/a	17.5	n/a	n/a	85	1386	30
Casing	Inner	13.375	12.615	54.5	Buttress	0	1386	0

Equipment / People

Unit Type	Unit	Power Unit	Employee #1	Employee #2
Field Storage Float	FSF(CTF)-389			
AS Cement Trailer Float	CTF-558	TRC(TRB)-180	Schweitzer, Casey	
Cement Trailer Float	CTF-263	TRB-421	Jackson, Duewayne	Lewis, Kevin
Cement Pump Float	CPF-091	TRH-082	Kirchenwitz, Jacob	
Light Duty Vehicles	LDV-082		Kelsey, John	

Timing

Event	Date/Time
Call Out	8/23/2022 06:00
Depart Facility	8/23/2022 09:00
On Location	8/23/2022 10:30
Rig Up Iron	8/23/2022 11:00
Job Started	8/23/2022 16:04
Job Completed	8/23/2022 18:30
Rig Down Iron	8/23/2022 18:40
Depart Location	8/23/2022 20:00

General Job Information

Metrics	Value
Well Fluid Density	9.2 lb/gal
Well Fluid Type	WBM
Rig Circulation Vol	400 bbls
Rig Circulation Time	0.5 hours
Calculated Displacement	208.1 bbls
Actual Displacement	208.1 bbls
Total Spacer to Surface	20 bbls
Total CMT to Surface	88 bbls
Well Topped Out	N/A

Job Details

Metrics	Value
Flare Prior to Job	No
Flare Prior to Job	0 units
Flare During Job	No
Flare During Job	0 units
Flare at End of Job	No
Flare at End of Job	0 units
Well Full Prior to Job	Yes
Well Fluid Density Into Well	9.2 lb/gal
Well Fluid Density Out of Well	9.2 lb/gal

Job Details (cont.)

Metrics	Value
BHCT	73 °F
BHST	89 °F

Water Analysis

Metrics	Value	Recommended
Water Source	Flat Tank	
Temperature	74 °F	50-80 °F
pH Level	7	5.5-8.5
Chlorides	0 mg/L	0-3000 mg/L
Total Alkalinity	180	0-1000
Total Hardness	500 mg/L	0-500 mg/L
Carbonates	0 mg/L	0-100 mg/L
Sulfates	200 mg/L	0-1500 mg/L
Potassium	0 mg/L	0-3000 mg/L
Iron	0 mg/L	0-300 mg/L

Circulation

Lost Circulation Experienced
No

Job Execution Information

Fluid	Product	Function	Density (lb/gal)	Yield (ft ³ /sk)	Water Rq. (gal/sk)	Water Rq. (gal/bbl)	Volume (sks)	Volume (bbl)	Designed Top (ft)
1	Water	Flush	8.34			42.00		20.00	0
2	Primary Cement	Primary	12.30	2.34	13.42		554.00	230.74	0
3	Water	DisplacementFinal	8.34			42.00		208.10	0

Job Fluid Details

Fluid	Type	Fluid	Product	Function	Conc.	Uom
2	Primary	Primary Cement	ASTM TYPE I/II	Cement	100.00	%
2	Primary	Primary Cement	A-10	Accelerator	5.00	%BWOB
2	Primary	Primary Cement	A-2	Accelerator	2.00	lb/sk
2	Primary	Primary Cement	A-7P	Accelerator	2.00	lb/sk
2	Primary	Primary Cement	FP-24	Defoamer	0.30	%BWOB
2	Primary	Primary Cement	IntegraSeal POLI	LostCirculation	0.25	lb/sk
2	Primary	Primary Cement	STATIC FREE	Other	0.01	lb/sk

Job Logs

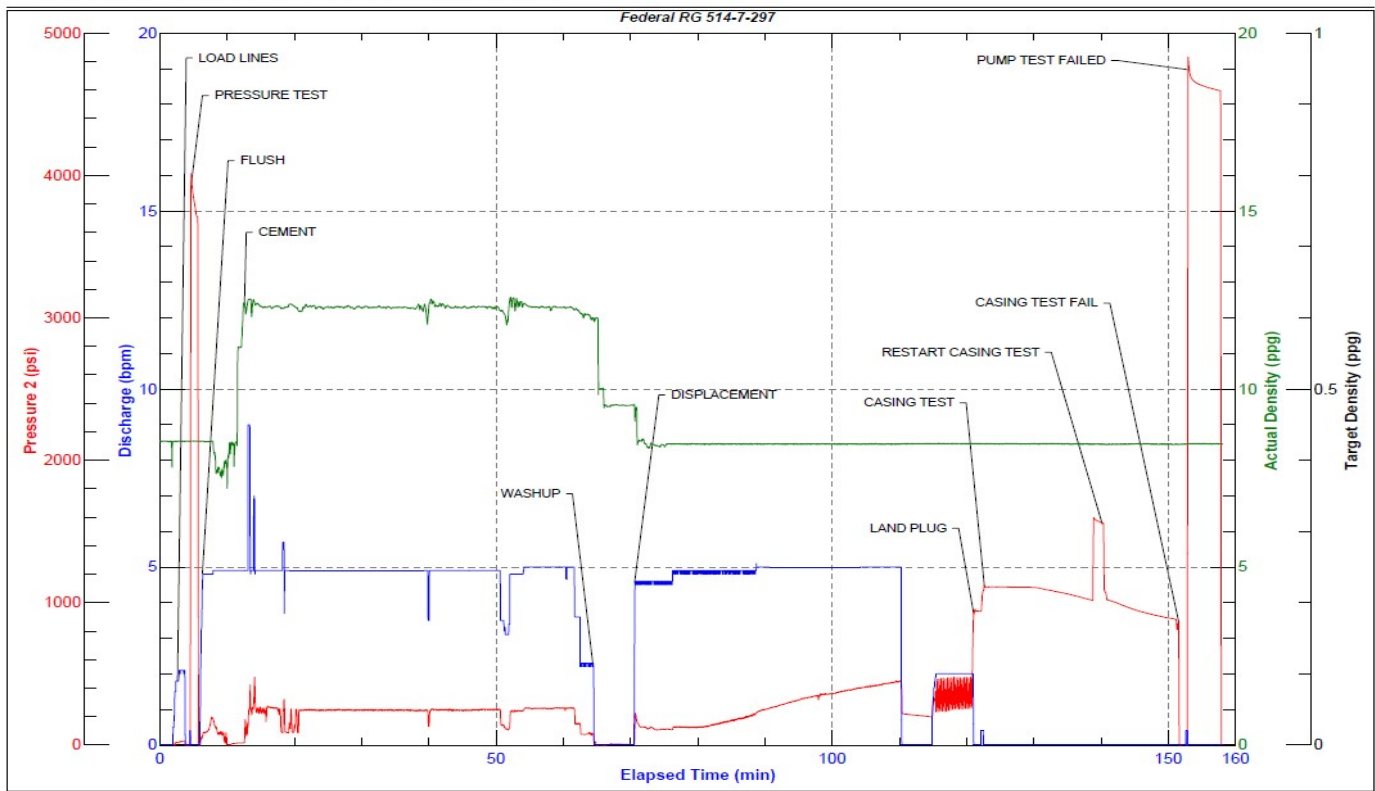
Line	Event	Date (MM/DD/YY)	Time (HH:MM)	Density (lb/gal)	Pump Rate (bpm)	Pump Volume (bbls)	Pipe Pressure (psi)	Comment
1	CALLOUT	8/23/2022	06:00					CREW CALLED TO PREPARE FOR A SURFACE CEMENT JOB. RTS IS 11:30 ON 8-23-22
2	SAFETY MEETING	8/23/2022	08:45					JOURNEY MANAGEMENT MEETING
3	DEPART YARD	8/23/2022	09:00					CREW DEPARTS RIFLE, CO YARD FOR LOCATION
4	ARRIVE ON LOCATION	8/23/2022	10:30					ARRIVE ON LOCATION, VERIFY ALL PROPER EQUIPMENT, PRODUCTS, AND JOB PROCEDURES WITH THE CUSTOMER
5	SAFETY MEETING	8/23/2022	10:40					PRE-RIG UP MEETING
6	SPOT UNITS	8/23/2022	10:50					SPOT ALL EQUIPMENT FOR RIG UP
7	RIG UP	8/23/2022	11:00					RIG UP ALL EQUIPMENT, AND LOAD CEMENT HEAD WITH CUSTOMER VERIFICATION
8	STANDBY	8/23/2022	11:30					CREW ON STANDBY WHILE THE RIG RUNS CASING AND CIRCULATES THE WELL
9	SAFETY MEETING	8/23/2022	15:45					PRE JOB-MEETING WITH ALL CREWS INVOLVED
10	LOAD LINES	8/23/2022	16:04	8.34	3	3	24	LOAD PUMP AND LINES FOR A PRESSURE TEST
11	PRESSURE TEST	8/23/2022	16:06	8.34	1	1	3985	PRESSURE TEST PUMP AND LINES TO CEMENT HEAD
12	FRESH FLUSH	8/23/2022	16:08	8.34	5	20	88	PUMP 20 BBLS FRESH FLUSH
13	PRIMARY CEMENT	8/23/2022	16:12	12.3	5	10	204	230.7 BBLS PRIMARY CMT – 12.3 # 2.34 Y 13.4 MW 554 SKS (177 BBLS H2O) 10 BBLS AWAY
14	PRIMARY CEMENT	8/23/2022	16:22	12.3	5	40	248	50 BBLS AWAY
15	PRIMARY CEMENT	8/23/2022	16:30	12.3	5	50	239	100 BBLS AWAY
16	PRIMARY CEMENT	8/23/2022	16:41	12.3	5	50	243	150 BBLS AWAY
17	PRIMARY CEMENT	8/23/2022	16:52	12.3	5	50	248	200 BBLS AWAY
18	PRIMARY CEMENT	8/23/2022	17:04	12.3	5	30.7	250	230.7 BBLS AWAY SHUTDOWN FOR WASHUP
19	WASHUP	8/23/2022	17:05					WASHUP PUMP AND DROP THE PLUG
20	DISPLACEMENT	8/23/2022	17:09	8.34	4.6	10	120	SEND THE PLUG AND BEGIN DISPLACEMENT 10 BBLS AWAY
21	DISPLACEMENT	8/23/2022	17:21	8.34	5	40	134	50 BBLS AWAY
22	DISPLACEMENT	8/23/2022	17:32	8.34	5	50	268	100 BBLS AWAY
23	DISPLACEMENT	8/23/2022	17:42	8.34	5	50	380	150 BBLS AWAY
24	DISPLACEMENT	8/23/2022	17:51	8.34	5	45	375	195 BBLS AWAY SHUTDOWN TO STAGE CEMENT FOR 5 MINS
25	DISPLACEMENT	8/23/2022	17:56	8.34	2	5	375	200 BBLS AWAY SLOWER RATE FOR BUMP
26	LAND PLUG	8/23/2022	18:02	8.34	2	8.1	375	208.1 BBLS AWAY LAND PLUG TO 940 PSI
27	CASING TEST	8/23/2022	18:04	8.34	1	1	1110	CASING TEST: LOSING PSI TO FAST SO TRIED TO BUMP IT UP ONE MORE TIME AND RESTART TEST. WAS STILL DROPPING TOO MUCH PSI, SHUT IN AT PUMP TRUCK TO TEST PUMP FOR PRESSURE LOSS. END CASING TEST AT 20 MINS WITH 960 PSI

Line	Event	Date (MM/DD/YY)	Time (HH:MM)	Density (lb/gal)	Pump Rate (bpm)	Pump Volume (bbls)	Pipe Pressure (psi)	Comment
28	CHECK FLOATS	8/23/2022	18:23					CHECK FLOATS 1 BBLS BACK AND FLOATS HELD
29	PRESSURE TEST	8/23/2022	18:25	8.34	1	1	1020	TEST PUMP TRUCK FOR PRESSURE LOSS AND IT IS THE PUMP TRUCK THAT IS LOSING PSI, CASING TEST FAILED DUE TO PUMP TRUCK NOT HOLDING PSI BLEED OFF AT 900 PSI
30	SAFETY MEETING	8/23/2022	18:30					RIG DOWN MEETING
31	RIG DOWN	8/23/2022	18:40					RIG DOWN EQUIPMENT
32	SAFETY MEETING	8/23/2022	19:50					JOURNEY MANAGEMENT MEETING
33	DEPART LOCATION	8/23/2022	20:00					CREW DEPARTS LOCATION

Pump Diagrams



JobMaster Program Version 5.01C1
Job Number: 83060
Customer: Terra
Well Name: Federal RG 514-7-297



Job Start: Tuesday, August 23, 2022