

HIAWATHA B #3
 1829' FNL, 1799' FEL, SEC 24 T12N-R101W
 Moffat County, CO

API #05-081-07001
 UPDATED 20-JAN-2014

GL @ 6948'
 KB @ 6964'

SURFACE CASING

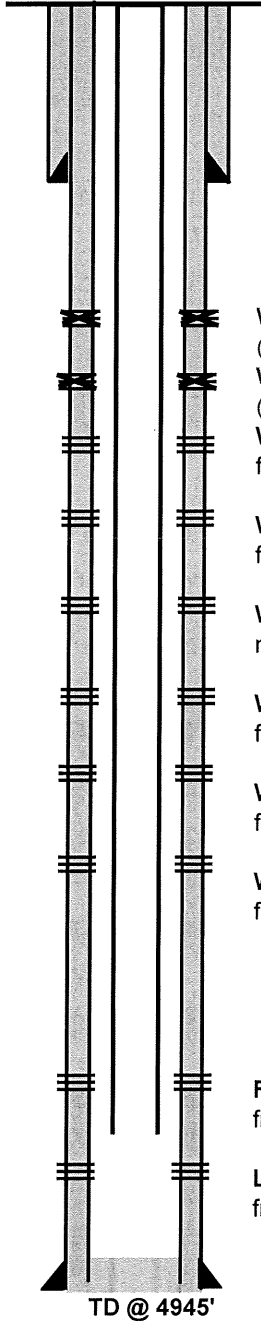
8 5/8" 24# J-55
 SET @ 886'
 CMT W/ 400 SX
 cmt to surface

Qty PRODUCTION TBG Detail

	ftKB
1 Tubing Hanger	16
110 2-3/8" 4.7# L-80 Tubing	16.5
1 1.875" XN profile nipple	3443
1 Tubing Pup Joint	3444.1
1 Notched Collar	3450.2
EOT	3450.4

PROD. CASING

4 1/2" 11.6# N-80 @ 4923.8'
 CMT w/ 1217 SX
 cmt to surface



Wasatch A-3 pefrs: 1480'-1500' (2003)
 (Squeezed)

Wasatch A-5 pefrs: 2185'-2195' (2003)
 (Squeezed)

Wasatch pefrs: 2861'-2865' w/4 JSPF
 frac'd w/ 218 bbl clean fluid, 149 mscf N2, & 34,125# 20/40sand

Wasatch pefrs: 3050'-3055' w/4 JSPF
 frac'd w/ 218 bbl clean fluid, 169 mscf N2, & 36,261# 20/40sand

Wasatch pefrs: 3082'-3086' w/4 JSPF
 no stimulation

Wasatch pefrs: 3115'-3120' w/4 JSPF
 frac'd w/ 294 bbl clean fluid, 203 mscf N2, & 58,057# 20/40sand

Wasatch pefrs: 3267'-3272' w/4 JSPF
 frac'd w/ 209.5 bbl clean fluid, 165 mscf N2, & 35,200# 20/40sar

Wasatch pefrs: 3453'-3458' w/4 JSPF
 frac'd w/ 388.5 bbl clean fluid, 284 mscf N2, & 42,817# 20/40sar

Ft. Union pefrs: 4245'-4250' w/4 JSPF
 frac'd w/ 212 bbl clean fluid, 185 mscf N2, & 34,739# 20/40sand

Lewis pefrs: 4596'-4601' w/4 JSPF
 frac'd w/ 227 bbl clean fluid, 228 mscf N2, & 44,945# 20/40sand

PBTB @
 4876'

TD @ 4945'