



Terra Energy Partners, LLC

SURFACE POST JOB REPORT

FEDERAL RG 411-18-297 05-103-12478

S:7 T:2S R:97W Rio Blanco CO

CallSheet #: 83025

Proposal #: 62570



SURFACE Post Job Report

Attention: Mr. Jayson Boebert | (970) 274-2569 | jboebert@terraep.com
Terra Energy Partners, LLC
4828 Loop Central Dr., Suite 900 | Houston, TX 77081

Dear Mr. Jayson Boebert,

Thank you for the opportunity to provide cementing services on this well. American Cementing strives to achieve complete customer satisfaction. If you have any questions regarding the services or data provided, please contact American Cementing at any time.

Sincerely,

Krystal Schell

Field Engineer I | (719) 992-1830 | krystal.schell@americacementing.com

Field Office 28730 US-6, Rifle, CO 81650
Phone: (970) 657-1157

Job Details & Summary

Geometry

Type	Function	OD (in)	ID (in)	Weight (lb/ft)	Thread	Top (ft)	Bottom (ft)	Excess (%)
Casing	Outer	20	19.5	53	n/a	0	102	0
Open Hole	Outer	n/a	17.5	n/a	n/a	102	1378	40
Casing	Inner	13.375	12.615	54.5	Buttress	0	1378	0

Equipment / People

Unit Type	Unit	Power Unit	Employee #1	Employee #2
Field Storage Float	FSF(CTF)-389			
AS Cement Trailer Float	CTF-138	TRC(TRB)-115	Wall, Lynn	Martinez, Matthew
Cement Trailer Float	CTF-555	TRC(TRB)-115	Martinez, Matthew	Wall, Lynn
Light Duty Vehicles	LDV-061		Aden, Mark	
Cement Pump Float	CPF-091	TRH-082	Woronovitch, Collin	

Timing

Event	Date/Time
Call Out	8/19/2022 16:30
Depart Facility	8/19/2022 19:30
On Location	8/19/2022 21:51
Rig Up Iron	8/20/2022 01:50
Job Started	8/20/2022 07:49
Job Completed	8/20/2022 10:11
Rig Down Iron	8/20/2022 10:30
Depart Location	8/20/2022 12:00

General Job Information

Metrics	Value
Well Fluid Density	9.2 lb/gal
Well Fluid Type	WBM
Rig Circulation Vol	600 bbls
Rig Circulation Time	1 hours
Calculated Displacement	206 bbls
Actual Displacement	206 bbls
Total Spacer to Surface	0 bbls
Total CMT to Surface	106 bbls
Well Topped Out	No

Job Details

Metrics	Value
Flare Prior to Job	No
Flare Prior to Job	0 units
Flare During Job	No
Flare During Job	0 units
Flare at End of Job	No
Flare at End of Job	0 units
Well Full Prior to Job	Yes
Well Fluid Density Into Well	9.2 lb/gal
Well Fluid Density Out of Well	9.2 lb/gal

Job Details (cont.)

Metrics	Value
BHCT	73 °F
BHST	89 °F

Water Analysis

Metrics	Value	Recommended
Water Source	None	
Temperature	68.8 °F	50-80 °F
pH Level	7	5.5-8.5
Chlorides	0 mg/L	0-3000 mg/L
Total Alkalinity	180	0-1000
Total Hardness	425 mg/L	0-500 mg/L
Carbonates	0 mg/L	0-100 mg/L
Sulfates	<200 mg/L	0-1500 mg/L
Potassium	0 mg/L	0-3000 mg/L
Iron	0 mg/L	0-300 mg/L

Circulation

Lost Circulation Experienced
No

Job Execution Information

Fluid	Product	Function	Density (lb/gal)	Yield (ft ³ /sk)	Water Rq. (gal/sk)	Water Rq. (gal/bbl)	Volume (sks)	Volume (bbl)	Designed Top (ft)
1	Water	Flush	8.34			42.00		20.00	0
2	Primary Cement	Primary	12.30	2.34	13.42		586.00	244.07	0
3	Water	DisplacementFinal	8.34			42.00		204.00	0

Job Fluid Details

Fluid	Type	Fluid	Product	Function	Conc.	Uom
2	Primary	Primary Cement	ASTM TYPE I/II	Cement	100.00	%
2	Primary	Primary Cement	A-10	Accelerator	5.00	%BWOB
2	Primary	Primary Cement	A-2	Accelerator	2.00	lb/sk
2	Primary	Primary Cement	A-7P	Accelerator	2.00	lb/sk
2	Primary	Primary Cement	FP-24	Defoamer	0.30	%BWOB
2	Primary	Primary Cement	IntegraSeal POLI	LostCirculation	0.25	lb/sk
2	Primary	Primary Cement	STATIC FREE	Other	0.01	lb/sk

Job Logs

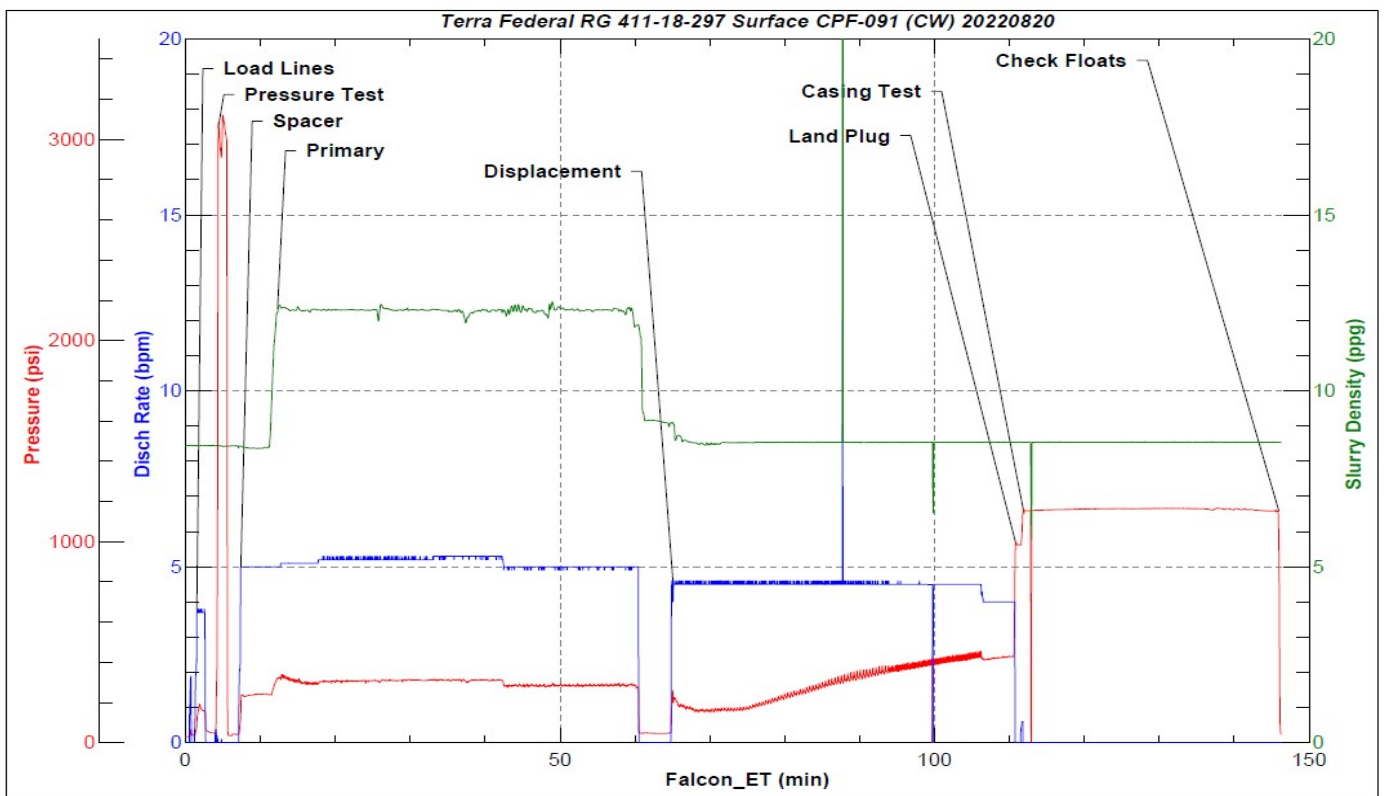
Line	Event	Date (MM/DD/YY)	Time (HH:MM)	Density (lb/gal)	Pump Rate (bpm)	Pump Volume (bbls)	Pipe Pressure (psi)	Comment
1	Callout	8/19/2022	16:30					Leave Berry Pad at 16:00 08/19/2022; On location 01:00 08/20/2022
2	Depart For Location	8/19/2022	19:30					Leave Rifle yard for location
3	Arrive On Location	8/19/2022	21:51					Arrive on location, rig preparing to run casing
4	Spot Equipment	8/19/2022	21:51					Spot in all equipment
5	Rig Up Iron	8/20/2022	01:50					Pre rig up safety meeting, rig in all equipment, and lines to the standpipe
6	Safety Meeting	8/20/2022	07:10					Pre job safety meeting with company man
7	End Circulation	8/20/2022	07:20					Rig ended circulation, circulated 1 hr. @ 10 bbls/min total of 600 BBLs
8	Pump Spacer	8/20/2022	07:48	8.34	4	20	193	Pumping freshwater spacer, returns
9	Pressure Test Lines	8/20/2022	07:53				3000	Pressure test
10	Pump Primary Cement	8/20/2022	08:00	12.3	5	0	305	Pumping primary cement
11	Pump Primary Cement	8/20/2022	08:10	12.3	5.5	50	307	Pumping primary cement
12	Pump Primary Cement	8/20/2022	08:22	12.3	5.5	100	314	Pumping primary cement
13	Pump Primary Cement	8/20/2022	08:30	12.3	5.5	150	309	Pumping primary cement
14	Pump Primary Cement	8/20/2022	08:40	12.3	5	200	282	Pumping primary cement
15	Pump Primary Cement	8/20/2022	08:50	12.3	5	244	285	Pumping primary cement
16	Drop Top Plug	8/20/2022	08:52					Dropped top plug verified by company man
17	Pump Displacement	8/20/2022	08:53	8.34	4.5	0	200	Pumping freshwater displacement

18	Pump Displacement	8/20/2022	09:05	8.34	4.5	50	183	Pumping freshwater displacement; spacer to surface at 80 bbls.
19	Pump Displacement	8/20/2022	09:16	8.34	4.5	100	292	Pumping freshwater displacement; cement to surface at 100 bbls.
20	Pump Displacement	8/20/2022	09:27	8.34	4.5	150	402	Pumping freshwater displacement
21	Pump Displacement	8/20/2022	09:38	8.34	4	200	426	Pumping freshwater displacement
22	Pump Displacement	8/20/2022	09:39	8.34	4	206	430	Pumping freshwater displacement
23	Land Plug	8/20/2022	09:39		4		992	Land plug, FCP 430 PSI, bumped to 992 PSI
24	Casing Test	8/20/2022	09:40					Casing test: pressured up to 1100 psi, held for 30 min.
24	Check Floats	8/20/2022	10:11					Bled pressure, floats held, 1 BBL bled back
25	Rig Down Iron	8/20/2022	10:30					Pre rig down safety meeting, rig down lines
26	Depart Location	8/20/2022	12:00					Leave location for Rifle shop

Pump Diagrams



JobMaster Program Version 5.01C1
Job Number: 83025
Customer: Terra
Well Name: Federal RG 411-18-297



Job Start: Saturday, August 20, 2022