

CERTIFICATE OF SURVEY
for
Platte Valley Petr. Energy Corp.
Adams County, Colorado

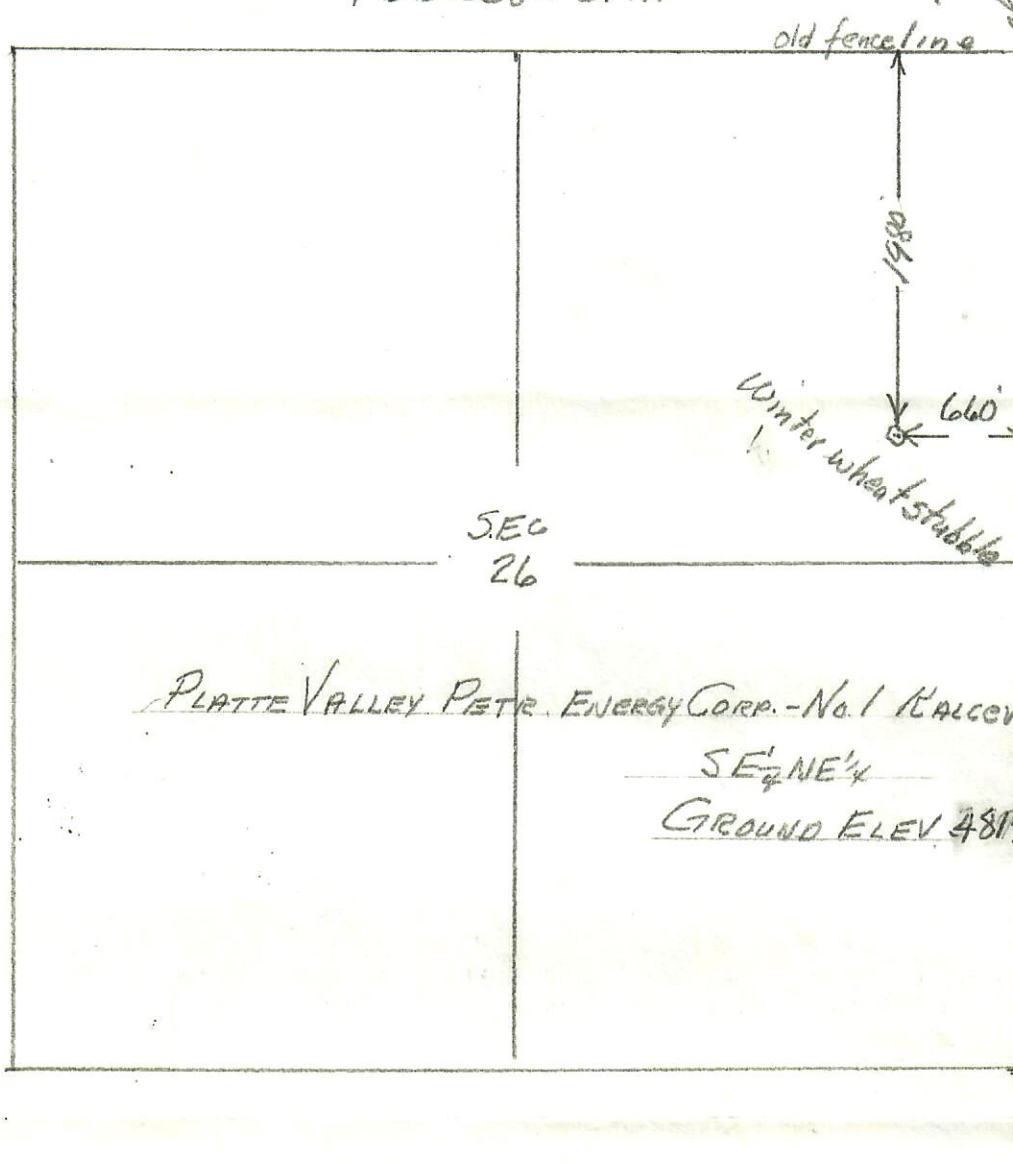


RECEIVED

JUL 22 1980

COLO. OIL & GAS CONS. COMM.

T3S R58W 6PM.



SCALE: 1" = 1000'

I hereby certify that the above plat is an accurate representation of a correct survey showing the location of Platte Valley Petr Energy Corp.-No.1 Kalcevic Farms Oilwell in SE $\frac{1}{4}$ NE $\frac{1}{4}$ Sec.26 T3S R58W 6PM. The elevation of the ground at the stake is 4817.0 feet above sea level from U.S.G.S. Bench Mark.

Fort Morgan, Colorado
July 19, 1980

Bevil J. Osborne
Registered Professional Engineer
State of Colorado

