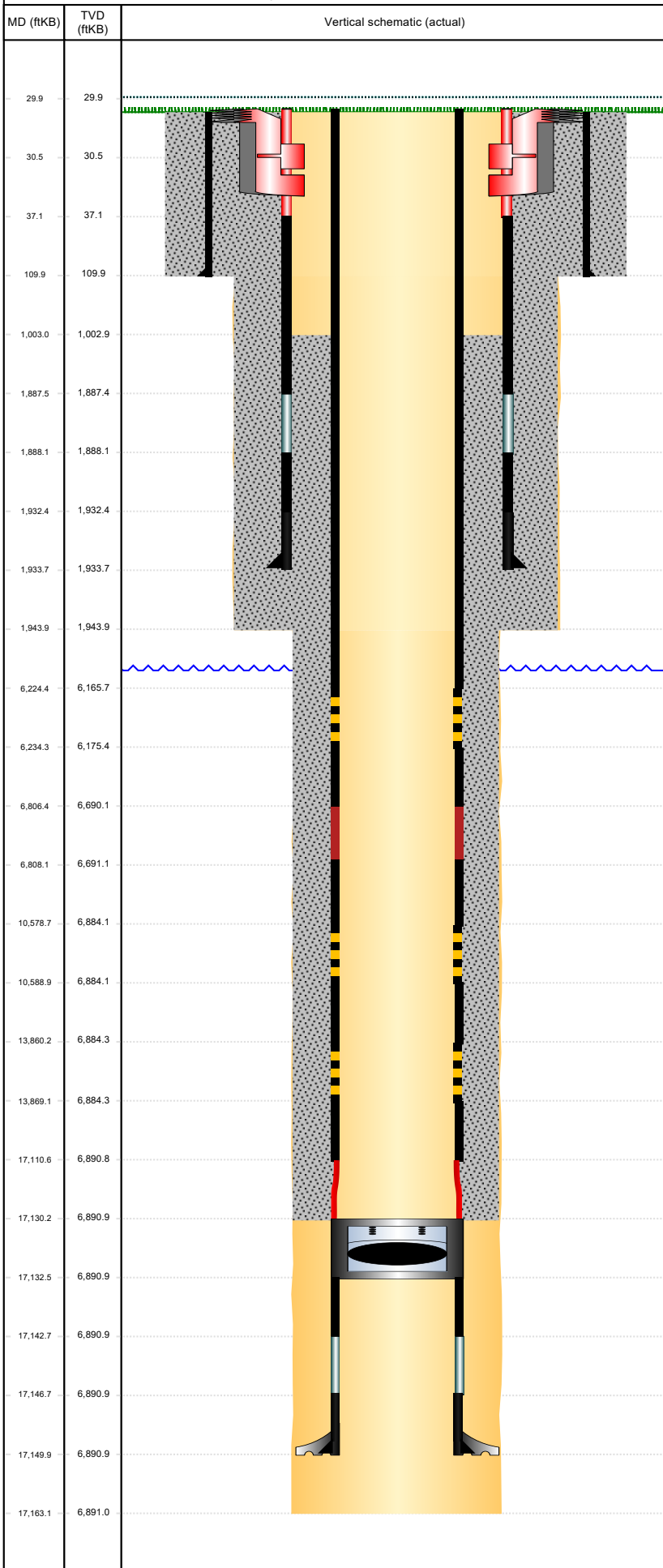


Land, Original Hole, 11/17/2022 9:59:12 AM



Well Header			
Surface UWI 0512349292	Business Unit Rockies	Gov Auth Dist	Prod Tree Loc Land
Original RKB Elevation (ft) 4,804.00	Original KB to Ground (ft) 30.00	Original Spud Date 10/16/2022	Abandon Date
Comment THERE IS AN EXCEPTION TO THE COGCC LOGGING REQUIREMENTS RULE 317.p. A cased-hole neutron log with gamma-ray log will be run from the kick-off point into the surface casing. See Sundry Doc. #403163139 dated 09/20/2022 for COA details.			
Directions To Well CR 49 & CR 42, E 1 2/10, SE 1/10 INTO			
Congressional Location			
Quarter 3 NE	Quarter 4 NW	Section 29	Township 4
Township N/S Dir N		Range 64	Range E/W Dir W
Bottom Hole Legal Location			
Bottom Hole Legal Location 6 75/NWNW-29-004N-064W6TH			
Plug Back Total Depths			
Date	PBTD (ftKB)	Method	Com
Wellbore Sections			
Section Des	Hole Size (in)	Act Top (ftKB)	Act Btm (ftKB)
CONDUCTOR	16	30.0	110.0
SURFACE	13 1/2	110.0	1,944.0
PRODUCTION	8 1/2	1,944.0	17,163.0
Zone Statuses			
Zone Name	Status Date	Status	Fluid Type
			Job
			Prod Method
Casing Strings			
Conductor, Planned?-N, 110ftKB			
Casing Description Conductor	Run Date 6/6/2022	OD (in) 16	Wt/Len (lb/ft) 36.94
Grade A-52A	Top Depth (ftKB) 30	Set Depth (ftKB) 110	
Surface, Planned?-N, 1933.7ftKB			
Casing Description Surface	Run Date 10/17/2022	OD (in) 9 5/8	Wt/Len (lb/ft) 36.00
Grade J-55	Top Depth (ftKB) 30	Set Depth (ftKB) 1933.7	
Production Casing, Planned?-N, 17149.8ftKB			
Casing Description Production Casing	Run Date 10/21/2022	OD (in) 5 1/2	Wt/Len (lb/ft) 17.00
Grade P-110	Top Depth (ftKB) 30	Set Depth (ftKB) 17149.8	
Cement			
Description Conductor Cement	Top Depth (ftKB) 30.0	Bottom Depth (ftKB) 110.0	
Description Surface Casing Cement	Top Depth (ftKB) 30.0	Bottom Depth (ftKB) 1,933.7	
Description Production Casing Cement	Top Depth (ftKB) 1,003.0	Bottom Depth (ftKB) 17,130.3	
Tubing Strings			
Tubing Description TUBING - PRODUCTION	Run Date	String Make ID (in)	Wt (lb/ft)
Grade	Len (ft)	Set Depth	
Other In Hole			
Run Date	Des	Make	OD (in)
			Top (ftKB)
			Btm (ftKB)
			Planned
Logs			
Date	Type	Depth Top (MD) (ftKB)	Btm (ftKB)