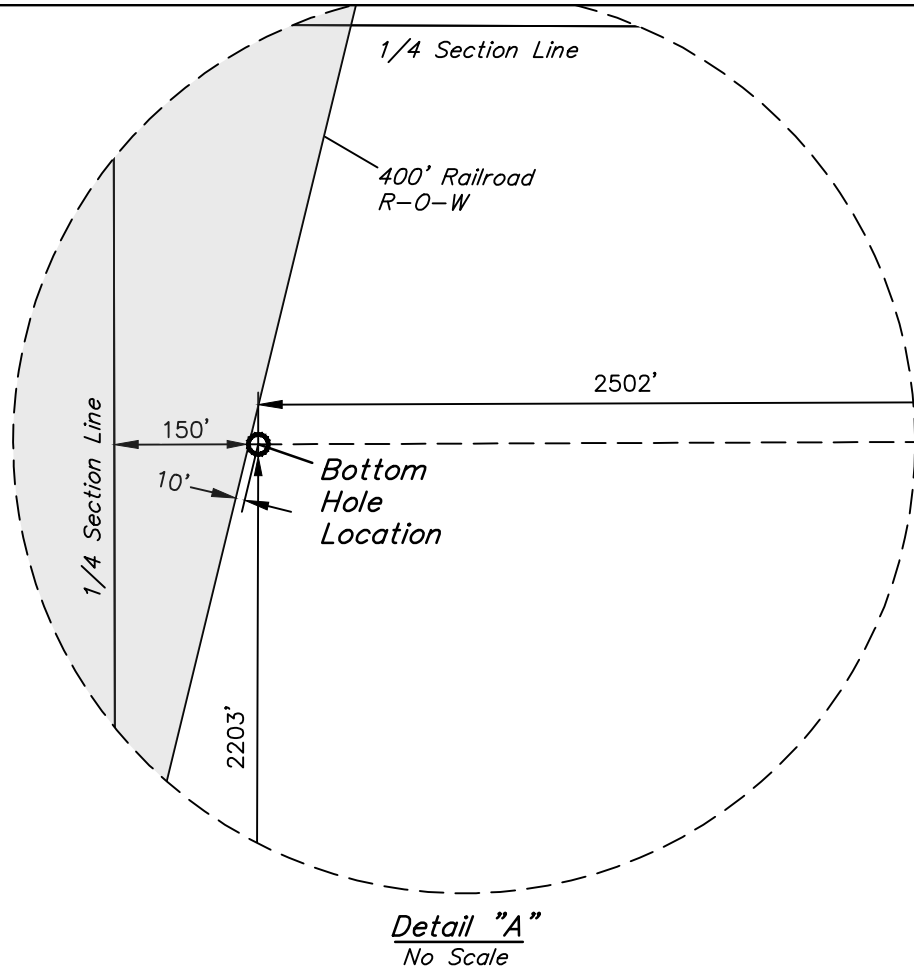
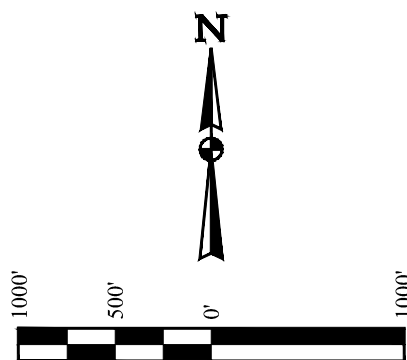


LEGEND:

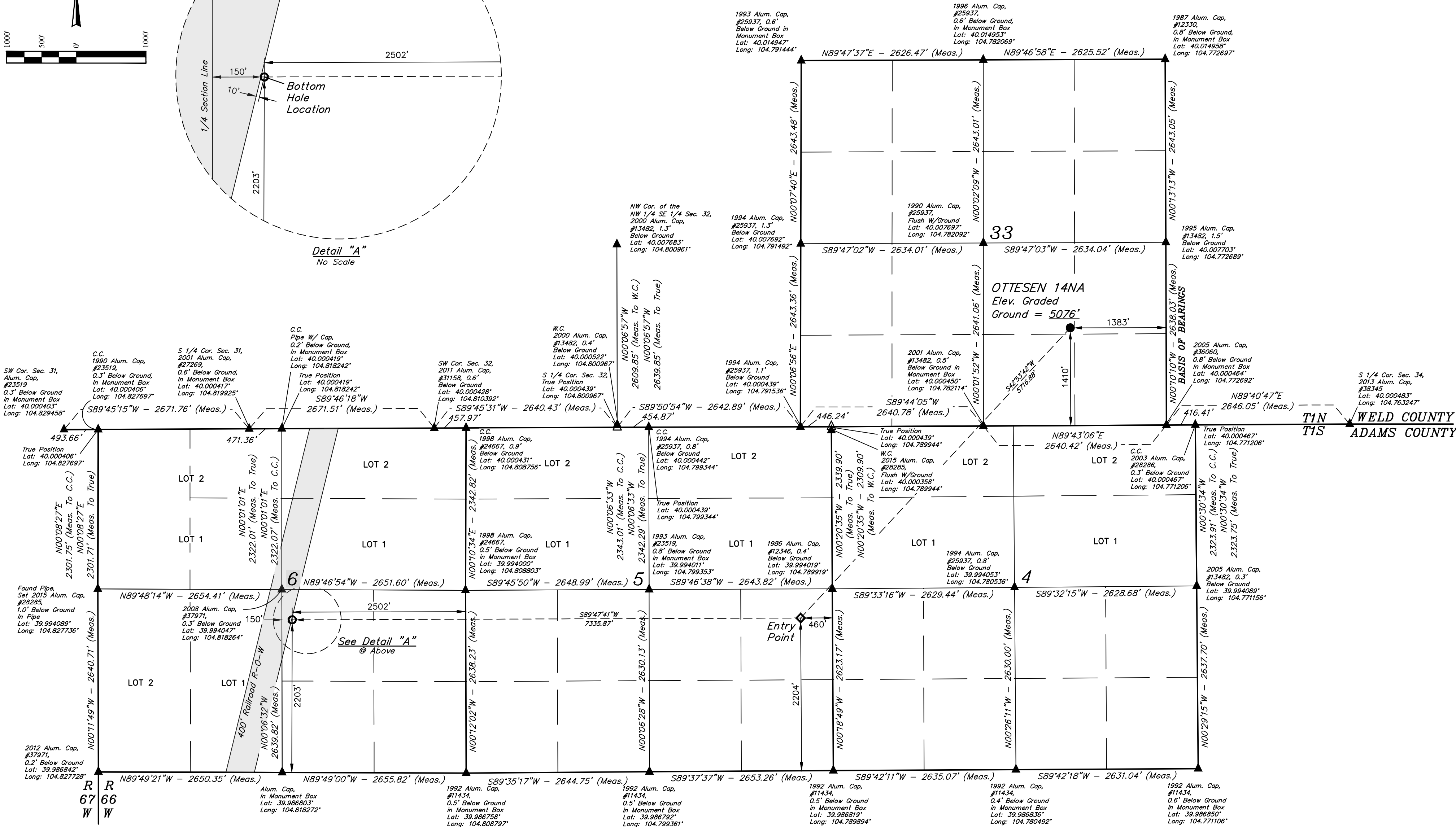
- = PROPOSED WELLHEAD.
- ◆ = ENTRY POINT.
- ◆ = PENETRATION POINT
- = BOTTOM HOLE LOCATION.
- ▲ = SECTION CORNERS LOCATED. (NAD 83)
- △ = SECTION CORNERS RE-ESTABLISHED. (Not Set on Ground.) (NAD 83)

NOTES:

- Distances referenced on plat to section lines are perpendicular.



T1N, R66W, 6th P.M.



| PDOP = 1.4 | | |
|---|---|---|
| NAD 83 (SURFACE LOCATION) | NAD 83 (ENTRY POINT) | NAD 83 (BOTTOM HOLE LOCATION) |
| LATITUDE = 40°00'15.37" (40.004325°) | LATITUDE = 39°59'34.31" (39.992863°) | LATITUDE = 39°59'34.24" (39.992845°) |
| LONGITUDE = 104°46'39.46" (104.777628°) | LONGITUDE = 104°47'29.60" (104.791556°) | LONGITUDE = 104°49'03.83" (104.817731°) |

BASIS OF ELEVATION
USGS COOPERATIVE BASE NETWORK CONTROL STATION,
DESIGNATION "JR 53 5026" NGS DATA SHEET LISTS THE NAVD 88
ELEVATION AS BEING 5028 FEET.

CERTIFICATE OF SURVEY
THIS IS TO CERTIFY THAT THE ABOVE DESCRIBED SURVEY WAS MADE BY ME OR UNDER MY SUPERVISION AND THAT THE SAME ARE TRUE AND CORRECT TO THE BEST OF MY KNOWLEDGE AND BELIEF.

REGISTERED LAND SURVEYOR
REGISTRATION NO. 28285
STATE OF COLORADO

UELTS, LLC
Corporate Office * 85 South 200 East
Vernal, UT 84078 * (435) 789-1017

PDC ENERGY INC.
OTTESEN 14NA
NW 1/4 SE 1/4, SECTION 33, T1N, R66W, 6th P.M.
WELD COUNTY, COLORADO

| | |
|-----------------------------------|----------------------|
| SURVEYED BY: DALLAS NIELSEN, C.M. | DATE: 06-30-16 |
| DRAWN BY: P.M. | DATE DRAWN: 10-26-22 |
| SCALE: 1" = 1000' | |

WELL LOCATION PLAT