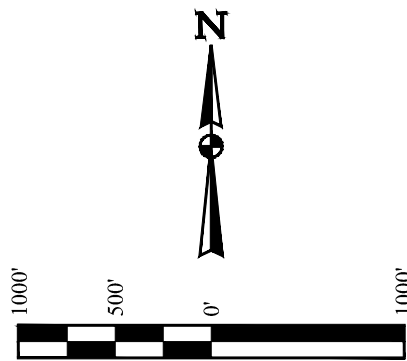


LEGEND:

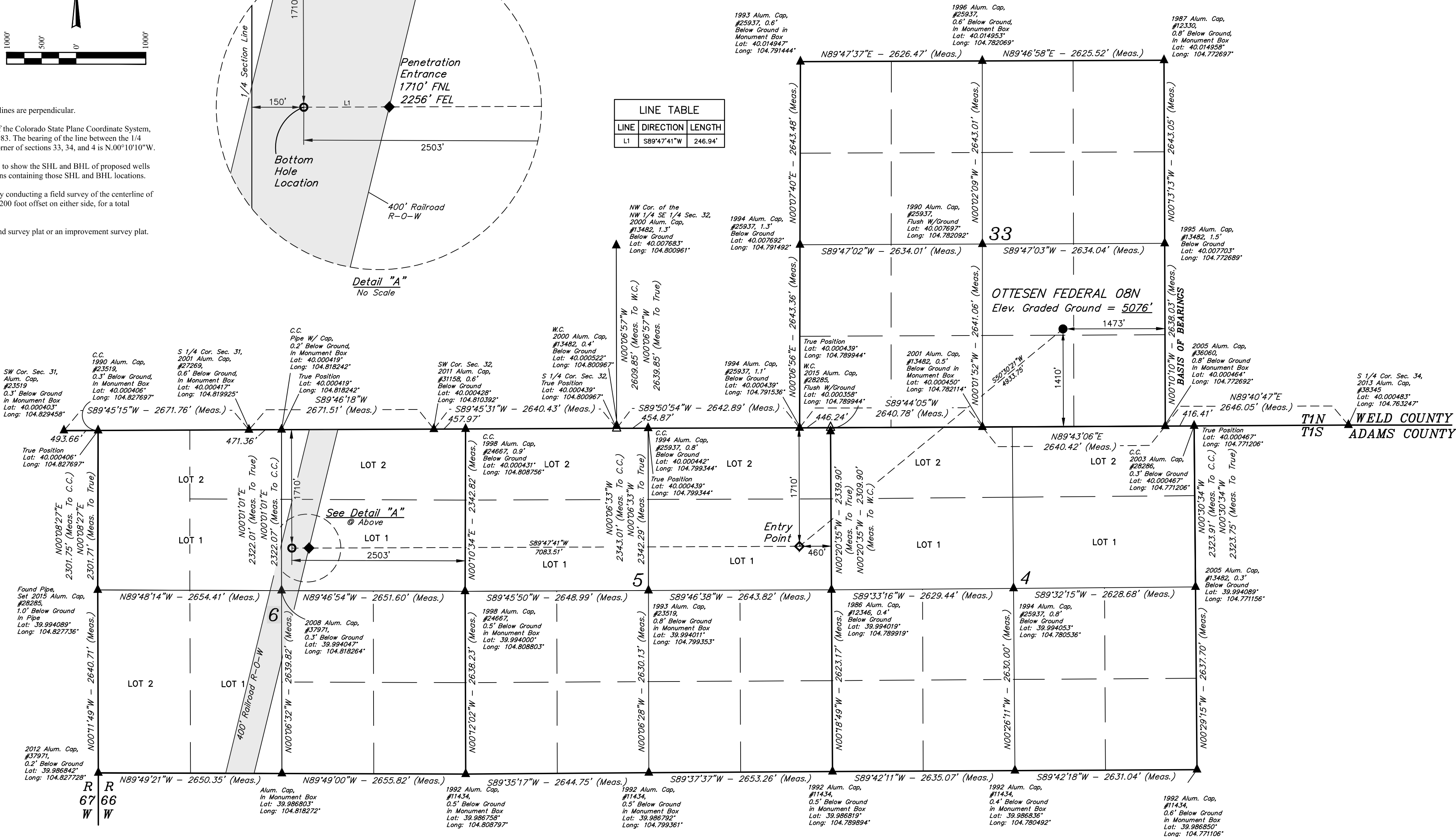
- = PROPOSED WELLHEAD.  
◆ = ENTRY POINT.  
◆ = PENETRATION POINT  
○ = BOTTOM HOLE LOCATION.  
▲ = SECTION CORNERS LOCATED. (NAD 83)  
△ = SECTION CORNERS RE-ESTABLISHED. (Not Set on Ground.) (NAD 83)



NOTES:

- Distances referenced on plat to section lines are perpendicular.
- All bearings hereon are grid bearings of the Colorado State Plane Coordinate System, North Zone, North American Datum 1983. The bearing of the line between the 1/4 corner of sections 33 and 34, and the corner of sections 33, 34, and 4 is N.00°10'10"W.
- The purpose of this well location plat is to show the SHL and BHL of proposed wells in relation to the exterior lines of sections containing those SHL and BHL locations.
- The Railroad R-O-W was determined by conducting a field survey of the centerline of the railroad tracks, and incorporating a 200 foot offset on either side, for a total right-of-way width of 400 feet.
- This well location certificate is not a land survey plat or an improvement survey plat.

T1N, R66W, 6th P.M.



CERTIFICATE

I, LOREN K. SHANKS, A DULY REGISTERED PROFESSIONAL LAND SURVEYOR IN THE STATE OF COLORADO, DO HEREBY CERTIFY THAT THIS LAND SURVEY PLAT REFLECTS THE RESULTS OF A SURVEY MADE UNDER MY DIRECT SUPERVISION AND CHECKING IN ACCORDANCE WITH THE REQUIREMENTS OF SECTION 38-51-106, C.R.S., AS AMENDED, AND IS TRUE AND CORRECT TO THE BEST OF MY KNOWLEDGE AND BELIEF.

REGISTERED LAND SURVEYOR  
RENEWAL NO. 28385  
STATE OF COLORADO  
10-22

IN ACCORDANCE WITH CRS 13-80-105:  
NOTICE: ACCORDING TO COLORADO LAW, YOU MUST COMMENCE ANY LEGAL ACTION BASED UPON ANY DEFECT IN THIS SURVEY WITHIN THREE YEARS AFTER YOU FIRST DISCOVER SUCH DEFECT. IN NO EVENT, MAY ANY ACTION BASED UPON ANY DEFECT IN THIS SURVEY BE COMMENCED MORE THAN TEN YEARS FROM THE DATE OF THE CERTIFICATION SHOWN HEREON.

PDOP = 1.4			
NAD 83 (SURFACE LOCATION)	NAD 83 (ENTRY POINT)	NAD 83 (PENETRATION ENTRANCE)	NAD 83 (BOTTOM HOLE LOCATION)
LATITUDE = 40°00'15.37" (40.004325°)	LATITUDE = 39°59'44.68" (39.995745°)	LATITUDE = 39°59'44.62" (39.995728°)	LATITUDE = 39°59'44.62" (39.995727°)
LONGITUDE = 104°46'40.61" (104.777947°)	LONGITUDE = 104°47'29.64" (104.791567°)	LONGITUDE = 104°49'00.63" (104.816843°)	LONGITUDE = 104°49'03.81" (104.817724°)

**BASIS OF ELEVATION**  
USGS COOPERATIVE BASE NETWORK CONTROL STATION,  
DESIGNATION "JR 53 5026", NGS DATA SHEET LISTS THE NAVD 88  
ELEVATION AS BEING 5028 FEET.

**UELS, LLC**  
Corporate Office \* 85 South 200 East  
Vernal, UT 84078 \* (435) 789-1017



**PDC ENERGY INC.**

**OTTESEN FEDERAL 08N**  
**NW 1/4 SE 1/4, SECTION 33, T1N, R66W, 6th P.M.**  
**WELD COUNTY, COLORADO**

SURVEYED BY: DALLAS NIELSEN, C.M.	DATE: 06-30-16
DRAWN BY: P.M.	DATE DRAWN: 10-26-22
SCALE: 1" = 1000'	

**WELL LOCATION PLAT**