



WELL DETAILS: OTTESEN 18C

| +N/-S | +E/-W | Northing | Easting | Latitude | Longitude |
|-------|-------|------------|------------|-----------------|-------------------|
| 0.0 | 0.0 | 1245344.08 | 3202074.47 | 40° 0' 16.557 N | 104° 46' 43.120 W |

Project: WELD COUNTY
 Site: Ottesen Pad
 Well: OTTESEN 18C
 Wellbore: OWB
 Design: Plan #2
 Lat: 40° 0' 16.557 N
 Long: 104° 46' 43.120 W
 GL: 5076.0
 KB: KB 20' @ 5096.0usft

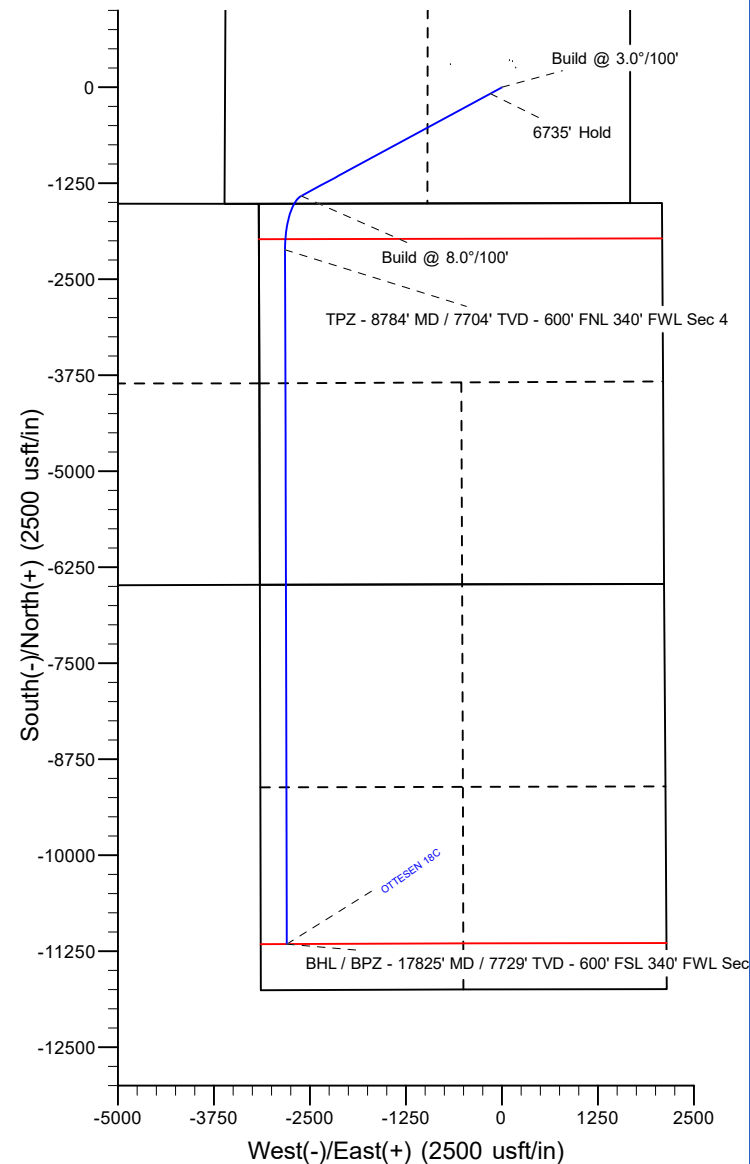
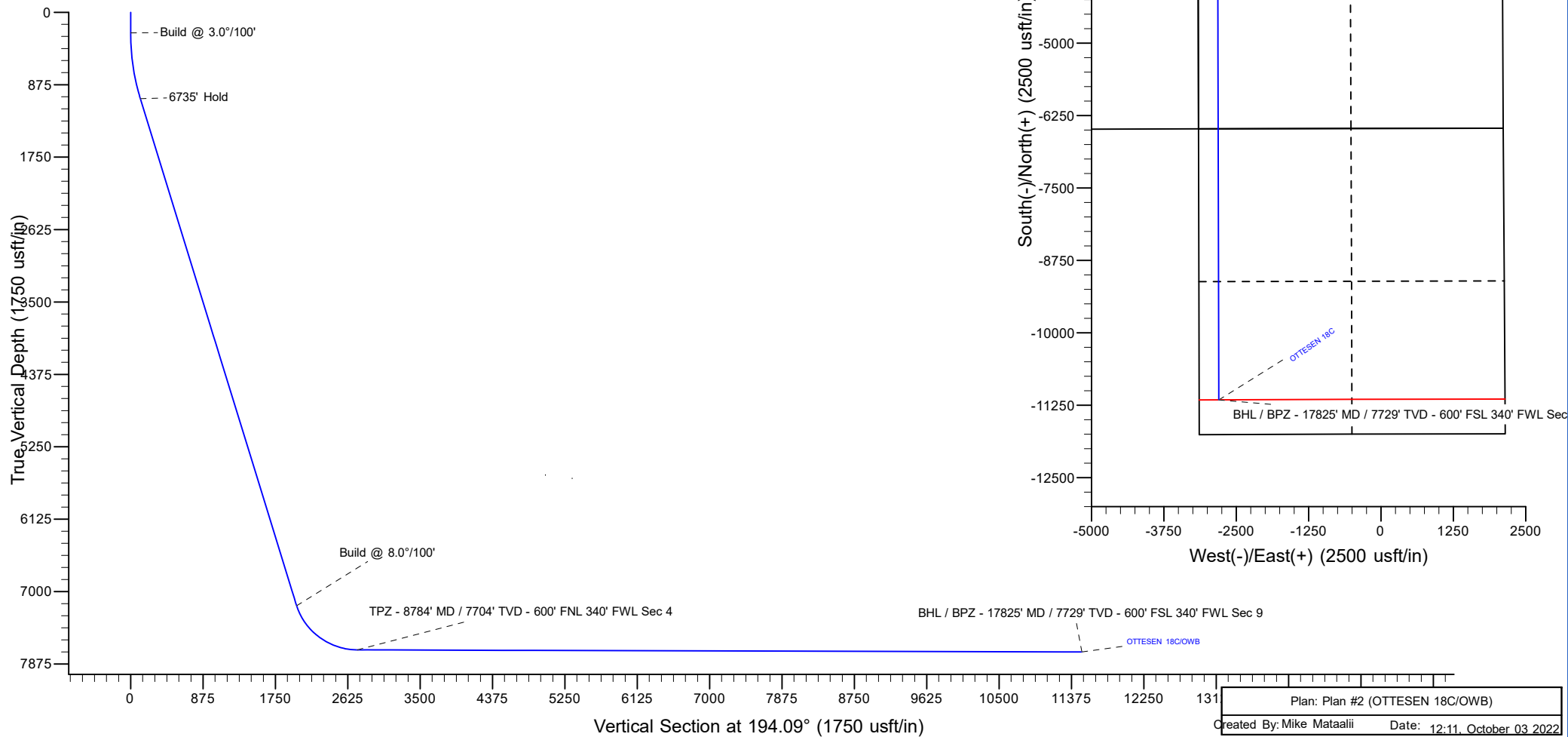


Azimuths to True North
 Magnetic North: 7.73°

Magnetic Field
 Strength: 51656.7nT
 Dip Angle: 66.30°
 Date: 4/12/2022
 Model: IGRF2000

SECTION DETAILS

| MD | Inc | Azi | TVD | +N/-S | +E/-W | Dleg | TFace | VSect | Annotation |
|---------|-------|--------|--------|----------|---------|------|--------|---------|---|
| 0.0 | 0.00 | 0.00 | 0.0 | 0.0 | 0.0 | 0.00 | 0.00 | 0.0 | |
| 250.0 | 0.00 | 0.00 | 250.0 | 0.0 | 0.0 | 0.00 | 0.00 | 0.0 | Build @ 3.0°/100' |
| 1067.9 | 24.54 | 241.58 | 1043.2 | -82.1 | -151.7 | 3.00 | 241.58 | 116.6 | 6735' Hold |
| 7803.0 | 24.54 | 241.58 | 7170.0 | -1413.2 | -2611.7 | 0.00 | 0.00 | 2006.6 | Build @ 8.0°/100' |
| 8784.4 | 89.84 | 179.85 | 7704.0 | -2114.1 | -2824.0 | 8.00 | -63.99 | 2738.1 | TPZ - 8784' MD / 7704' TVD - 600' FNL 340' FWL Sec 4 |
| 17825.8 | 89.84 | 179.85 | 7729.0 | -11155.4 | -2800.5 | 0.00 | 0.00 | 11501.6 | BHL / BPZ - 17825' MD / 7729' TVD - 600' FSL 340' FWL Sec 9 |



PDC Energy Inc.
Anticollision Summary Report

| | | | |
|---------------------------|-------------------|-------------------------------------|----------------------------|
| Company: | GWP - PLANNING DB | Local Co-ordinate Reference: | Well OTTESEN 18C |
| Project: | WELD COUNTY | TVD Reference: | KB 20' @ 5096.0usft |
| Reference Site: | Ottesen Pad | MD Reference: | KB 20' @ 5096.0usft |
| Site Error: | 0.0 usft | North Reference: | True |
| Reference Well: | OTTESEN 18C | Survey Calculation Method: | Minimum Curvature |
| Well Error: | 0.0 usft | Output errors are at | 2.00 sigma |
| Reference Wellbore | OWB | Database: | EDM 5000.15 Single User Db |
| Reference Design: | Plan #2 | Offset TVD Reference: | Offset Datum |

| | | | |
|-------------------------------------|---|-----------------------|---------------------|
| Reference | Plan #2 | | |
| Filter type: | NO GLOBAL FILTER: Using user defined selection & filtering criteria | | |
| Interpolation Method: | Stations | Error Model: | ISCWSA |
| Depth Range: | Unlimited | Scan Method: | Closest Approach 3D |
| Results Limited by: | Maximum center-center distance of 10,000.0 usft | Error Surface: | Pedal Curve |
| Warning Levels Evaluated at: | 2.00 Sigma | Casing Method: | Not applied |

| | | | | |
|----------------------------|------------------|--------------------------|------------------|---------------------|
| Survey Tool Program | Date | 10/3/2022 | | |
| From (usft) | To (usft) | Survey (Wellbore) | Tool Name | Description |
| 0.0 | 17,825.8 | Plan #2 (OWB) | MWD | OWSG MWD - Standard |

| Summary | | | | | | |
|------------------------------------|---------------------------------|------------------------------|---------------------------------|----------------------------------|-------------------|-----------------------------|
| Site Name | Reference Measured Depth (usft) | Offset Measured Depth (usft) | Distance Between Centres (usft) | Distance Between Ellipses (usft) | Separation Factor | Warning |
| Offset Well - Wellbore - Design | | | | | | |
| Ottesen Offsets | | | | | | |
| Bailey #1 - OWB - OWB | 9,400.0 | 7,684.7 | 485.7 | 406.4 | 6.127 | SF |
| Bailey #1 - OWB - OWB | 9,500.0 | 7,685.0 | 474.2 | 398.6 | 6.273 | ES |
| Bailey #1 - OWB - OWB | 9,505.1 | 7,685.0 | 474.2 | 398.8 | 6.292 | CC |
| Great Western Sugar 3X - OWB - OWB | 9,857.6 | 7,583.0 | 8,810.3 | 8,730.4 | 110.350 | CC |
| Great Western Sugar 3X - OWB - OWB | 10,000.0 | 7,583.4 | 8,811.4 | 8,729.2 | 107.151 | ES |
| Great Western Sugar 3X - OWB - OWB | 14,500.0 | 7,595.8 | 9,958.5 | 9,802.9 | 63.998 | SF |
| Grein #1 - OWB - OWB | 9,432.2 | 7,628.8 | 1,946.5 | 1,872.1 | 26.164 | CC |
| Grein #1 - OWB - OWB | 9,500.0 | 7,629.0 | 1,947.7 | 1,871.6 | 25.570 | ES |
| Grein #1 - OWB - OWB | 10,300.0 | 7,631.2 | 2,131.2 | 2,036.5 | 22.502 | SF |
| OTTESEN LE 06-290HN - OWB - OWB | 233.8 | 234.3 | 123.7 | 120.5 | 39.234 | CC |
| OTTESEN LE 06-290HN - OWB - OWB | 300.0 | 300.6 | 123.8 | 120.3 | 35.976 | ES |
| OTTESEN LE 06-290HN - OWB - OWB | 11,600.0 | 9,854.5 | 500.4 | 314.9 | 2.698 | SF |
| OTTESEN LE 06-290HNN - OWB - OWB | 311.9 | 312.6 | 115.8 | 112.1 | 31.753 | CC |
| OTTESEN LE 06-290HNN - OWB - OWB | 400.0 | 400.3 | 116.1 | 111.9 | 27.613 | ES |
| OTTESEN LE 06-290HNN - OWB - OWB | 11,900.0 | 9,872.0 | 1,330.2 | 1,122.8 | 6.414 | SF |
| OTTESEN LE 06-311HC - OWB - OWB | 353.7 | 353.9 | 108.3 | 104.3 | 27.547 | CC |
| OTTESEN LE 06-311HC - OWB - OWB | 400.0 | 399.5 | 108.4 | 104.3 | 26.197 | ES |
| OTTESEN LE 06-311HC - OWB - OWB | 11,800.0 | 9,968.2 | 385.5 | 197.0 | 2.045 | SF |
| OTTESEN LE 06-311HN - OWB - OWB | 504.1 | 503.2 | 101.5 | 96.7 | 20.859 | CC, ES |
| OTTESEN LE 06-311HN - OWB - OWB | 12,100.0 | 9,963.0 | 540.1 | 349.9 | 2.839 | SF |
| OTTESEN LE 06-351HN - OWB - OWB | 608.7 | 606.9 | 93.9 | 88.6 | 17.566 | CC, ES |
| OTTESEN LE 06-351HN - OWB - OWB | 12,200.0 | 10,053.0 | 485.9 | 297.1 | 2.574 | SF |
| OTTESEN LE 06-351HNN - OWB - OWB | 617.7 | 613.5 | 87.6 | 81.6 | 14.603 | CC, ES |
| OTTESEN LE 06-351HNN - OWB - OWB | 12,400.0 | 9,961.0 | 694.4 | 518.6 | 3.949 | SF |
| OTTESEN LE 06-370HC - OWB - OWB | 725.0 | 720.0 | 80.8 | 74.7 | 13.161 | CC, ES |
| OTTESEN LE 06-370HC - OWB - OWB | 12,500.0 | 10,251.5 | 376.4 | 165.6 | 1.785 | Collision Risk Procedures R |
| OTTESEN LE 06-370HN - OWB - OWB | 674.8 | 663.3 | 94.0 | 85.6 | 11.205 | CC, ES |
| OTTESEN LE 06-370HN - OWB - OWB | 12,600.0 | 10,141.0 | 523.4 | 329.4 | 2.698 | SF |
| OTTESEN LE 09-362HC - OWB - OWB | 0.0 | 0.5 | 344.7 | | | |
| OTTESEN LE 09-362HC - OWB - OWB | 250.0 | 249.4 | 346.0 | 342.7 | 104.350 | ES |
| OTTESEN LE 09-362HC - OWB - OWB | 17,825.8 | 17,792.3 | 4,421.4 | 4,021.6 | 11.059 | SF |
| OTTESEN LE 09-363HN - OWB - OWB | 0.0 | 0.5 | 314.4 | | | |
| OTTESEN LE 09-363HN - OWB - OWB | 250.0 | 249.7 | 314.6 | 311.3 | 95.371 | ES |
| OTTESEN LE 09-363HN - OWB - OWB | 17,825.8 | 17,453.0 | 4,074.3 | 3,676.9 | 10.253 | SF |
| OTTESEN LE 09-365HC - OWB - OWB | 0.0 | 0.5 | 284.1 | | | |
| OTTESEN LE 09-365HC - OWB - OWB | 200.0 | 197.9 | 285.4 | 282.4 | 95.151 | ES |
| OTTESEN LE 09-365HC - OWB - OWB | 17,825.8 | 17,466.9 | 3,718.5 | 3,324.8 | 9.445 | SF |

CC - Min centre to center distance or convergent point, SF - min separation factor, ES - min ellipse separation

PDC Energy Inc.
Anticollision Summary Report

| | | | |
|---------------------------|-------------------|-------------------------------------|----------------------------|
| Company: | GWP - PLANNING DB | Local Co-ordinate Reference: | Well OTTESEN 18C |
| Project: | WELD COUNTY | TVD Reference: | KB 20' @ 5096.0usft |
| Reference Site: | Ottesen Pad | MD Reference: | KB 20' @ 5096.0usft |
| Site Error: | 0.0 usft | North Reference: | True |
| Reference Well: | OTTESEN 18C | Survey Calculation Method: | Minimum Curvature |
| Well Error: | 0.0 usft | Output errors are at | 2.00 sigma |
| Reference Wellbore | OWB | Database: | EDM 5000.15 Single User Db |
| Reference Design: | Plan #2 | Offset TVD Reference: | Offset Datum |

| Summary | | | | | | |
|----------------------------------|---------------------------------|------------------------------|---------------------------------|----------------------------------|-------------------|---------|
| Site Name | Reference Measured Depth (usft) | Offset Measured Depth (usft) | Distance Between Centres (usft) | Distance Between Ellipses (usft) | Separation Factor | Warning |
| Offset Well - Wellbore - Design | | | | | | |
| Ottesen Offsets | | | | | | |
| OTTESEN LE 09-365HN - OWB - OWB | 0.0 | 0.5 | 298.8 | | | |
| OTTESEN LE 09-365HN - OWB - OWB | 200.0 | 198.3 | 299.6 | 296.6 | 99.878 | ES |
| OTTESEN LE 09-365HN - OWB - OWB | 17,825.8 | 17,626.0 | 3,821.5 | 3,421.1 | 9.544 | SF |
| OTTESEN LE 09-366HN - OWB - OWB | 0.0 | 0.5 | 255.3 | | | |
| OTTESEN LE 09-366HN - OWB - OWB | 254.6 | 255.6 | 255.6 | 252.3 | 77.197 | ES |
| OTTESEN LE 09-366HN - OWB - OWB | 17,825.8 | 17,452.0 | 3,316.5 | 2,920.3 | 8.370 | SF |
| OTTESEN LE 09-366HNX - OWB - OWB | 0.0 | 0.5 | 270.1 | | | |
| OTTESEN LE 09-366HNX - OWB - OWB | 250.0 | 250.2 | 270.9 | 267.6 | 82.199 | ES |
| OTTESEN LE 09-366HNX - OWB - OWB | 17,825.8 | 17,047.7 | 3,467.9 | 3,080.2 | 8.945 | SF |
| OTTESEN LE 09-368HC - OWB - OWB | 0.0 | 0.5 | 224.9 | | | |
| OTTESEN LE 09-368HC - OWB - OWB | 200.0 | 199.0 | 225.6 | 222.6 | 75.095 | ES |
| OTTESEN LE 09-368HC - OWB - OWB | 17,825.8 | 17,587.0 | 2,959.5 | 2,563.2 | 7.469 | SF |
| OTTESEN LE 09-368HN - OWB - OWB | 0.0 | 0.5 | 239.7 | | | |
| OTTESEN LE 09-368HN - OWB - OWB | 250.0 | 249.5 | 239.9 | 236.6 | 72.701 | ES |
| OTTESEN LE 09-368HN - OWB - OWB | 17,825.8 | 17,357.0 | 3,056.7 | 2,663.5 | 7.774 | SF |

PDC Energy Inc.
Anticollision Summary Report

| | | | |
|---------------------------|-------------------|-------------------------------------|----------------------------|
| Company: | GWP - PLANNING DB | Local Co-ordinate Reference: | Well OTTESEN 18C |
| Project: | WELD COUNTY | TVD Reference: | KB 20' @ 5096.0usft |
| Reference Site: | Ottesen Pad | MD Reference: | KB 20' @ 5096.0usft |
| Site Error: | 0.0 usft | North Reference: | True |
| Reference Well: | OTTESEN 18C | Survey Calculation Method: | Minimum Curvature |
| Well Error: | 0.0 usft | Output errors are at | 2.00 sigma |
| Reference Wellbore | OWB | Database: | EDM 5000.15 Single User Db |
| Reference Design: | Plan #2 | Offset TVD Reference: | Offset Datum |

| Summary | | | | | | |
|------------------------------|---------------------------------|------------------------------|---------------------------------|----------------------------------|-------------------|--|
| Site Name | Reference Measured Depth (usft) | Offset Measured Depth (usft) | Distance Between Centres (usft) | Distance Between Ellipses (usft) | Separation Factor | Warning |
| Ottesen Pad | | | | | | |
| OTTESEN 15C - OWB - OWB | 0.0 | 0.0 | 316.2 | | | |
| OTTESEN 15C - OWB - OWB | 252.2 | 252.4 | 316.9 | 314.0 | 108.162 | ES |
| OTTESEN 15C - OWB - OWB | 1,700.0 | 1,734.0 | 573.9 | 553.1 | 27.565 | SF |
| OTTESEN 15C - OWB - Plan #2 | 0.0 | 0.0 | 316.2 | | | |
| OTTESEN 15C - OWB - Plan #2 | 11,000.0 | 9,590.9 | 320.4 | 158.1 | 1.975 | Collision Risk Procedures Recommended |
| OTTESEN 15C - OWB - Plan #2 | 11,100.0 | 9,623.3 | 347.0 | 169.4 | 1.954 | Collision Risk Procedures Recommended |
| OTTESEN 16N - OWB - OWB | 252.5 | 252.8 | 329.7 | 326.7 | 110.679 | CC, ES |
| OTTESEN 16N - OWB - OWB | 1,700.0 | 1,735.0 | 650.3 | 629.4 | 31.064 | SF |
| OTTESEN 16N - OWB - Plan #2 | 252.5 | 252.8 | 329.7 | 326.7 | 110.679 | CC, ES |
| OTTESEN 16N - OWB - Plan #2 | 11,400.0 | 9,750.0 | 547.8 | 376.3 | 3.193 | SF |
| OTTESEN 17N - OWB - OWB | 478.1 | 477.6 | 8.2 | 3.9 | 1.907 | Collision Risk Procedures Recommended |
| OTTESEN 17N - OWB - OWB | 500.0 | 499.3 | 8.6 | 3.7 | 1.757 | Collision Risk Procedures Recommended |
| OTTESEN 17N - OWB - Plan #2 | 478.1 | 477.6 | 8.2 | 3.9 | 1.907 | Collision Risk Procedures Recommended |
| OTTESEN 17N - OWB - Plan #2 | 6,914.8 | 7,173.7 | 38.5 | -64.7 | 0.373 | No-Go Zone - Stop Drilling, If Necessary |
| OTTESEN 19NA - OWB - Plan #2 | 1,061.6 | 1,067.1 | 12.9 | -6.3 | 0.671 | No-Go Zone - Stop Drilling, If Necessary |
| OTTESEN 19NA - OWB - Plan #2 | 7,613.6 | 7,625.9 | 28.3 | -65.2 | 0.303 | No-Go Zone - Stop Drilling, If Necessary |
| OTTESEN 20N - OWB - Plan #2 | 989.6 | 999.5 | 29.3 | 12.3 | 1.725 | Collision Risk Procedures Recommended |
| OTTESEN 20N - OWB - Plan #2 | 1,000.0 | 1,010.0 | 29.3 | 12.2 | 1.717 | Collision Risk Procedures Recommended |
| OTTESEN 20N - OWB - Plan #2 | 17,825.8 | 17,646.8 | 416.4 | 61.8 | 1.174 | Collision Avoidance Required, SF |
| OTTESEN 21N - OWB - OWB | 211.8 | 211.8 | 45.4 | 42.9 | 17.901 | CC |
| OTTESEN 21N - OWB - OWB | 250.9 | 250.9 | 45.4 | 42.7 | 16.418 | ES |
| OTTESEN 21N - OWB - OWB | 500.0 | 499.2 | 60.4 | 53.6 | 8.859 | SF |
| OTTESEN 21N - OWB - Plan #2 | 211.8 | 211.8 | 45.4 | 42.9 | 17.901 | CC |
| OTTESEN 21N - OWB - Plan #2 | 250.9 | 250.9 | 45.4 | 42.7 | 16.418 | ES |
| OTTESEN 21N - OWB - Plan #2 | 17,825.8 | 17,717.4 | 618.5 | 260.3 | 1.727 | Collision Risk Procedures Recommended |
| OTTESEN 22C - OWB - Plan #2 | 250.0 | 250.0 | 60.0 | 57.2 | 21.476 | CC |
| OTTESEN 22C - OWB - Plan #2 | 900.0 | 916.8 | 62.6 | 47.6 | 4.169 | ES |
| OTTESEN 22C - OWB - Plan #2 | 17,825.8 | 17,712.1 | 759.8 | 365.7 | 1.928 | Collision Risk Procedures Recommended |
| OTTESEN 23NA - OWB - Plan #2 | 250.0 | 250.0 | 75.0 | 72.2 | 26.857 | CC |
| OTTESEN 23NA - OWB - Plan #2 | 800.0 | 817.8 | 78.5 | 64.9 | 5.783 | ES |
| OTTESEN 23NA - OWB - Plan #2 | 17,825.8 | 17,306.4 | 1,030.6 | 672.0 | 2.874 | SF |
| OTTESEN 24N - OWB - OWB | 255.5 | 255.8 | 88.3 | 85.4 | 30.596 | CC, ES |
| OTTESEN 24N - OWB - OWB | 600.0 | 595.5 | 120.0 | 111.5 | 14.115 | SF |
| OTTESEN 24N - OWB - Plan #2 | 255.5 | 255.8 | 88.3 | 85.4 | 30.596 | CC, ES |
| OTTESEN 24N - OWB - Plan #2 | 17,825.8 | 17,599.2 | 1,153.1 | 767.5 | 2.990 | SF |
| OTTESEN 25N - OWB - Plan #2 | 250.0 | 250.0 | 105.2 | 102.4 | 37.658 | CC |
| OTTESEN 25N - OWB - Plan #2 | 600.0 | 615.0 | 108.3 | 97.9 | 10.462 | ES |
| OTTESEN 25N - OWB - Plan #2 | 17,825.8 | 17,331.9 | 1,350.4 | 965.9 | 3.512 | SF |
| OTTESEN 26C - OWB - Plan #2 | 250.0 | 250.0 | 119.8 | 117.0 | 42.873 | CC |
| OTTESEN 26C - OWB - Plan #2 | 500.0 | 511.7 | 121.9 | 113.6 | 14.677 | ES |
| OTTESEN 26C - OWB - Plan #2 | 17,825.8 | 17,542.0 | 1,519.9 | 1,126.3 | 3.861 | SF |
| OTTESEN 27NA - OWB - OWB | 0.0 | 0.0 | 135.2 | | | |
| OTTESEN 27NA - OWB - OWB | 250.0 | 250.0 | 135.9 | 133.0 | 48.101 | ES |
| OTTESEN 27NA - OWB - OWB | 700.0 | 694.7 | 183.7 | 174.1 | 19.220 | SF |
| OTTESEN 27NA - OWB - Plan #2 | 0.0 | 0.0 | 135.2 | | | |
| OTTESEN 27NA - OWB - Plan #2 | 250.0 | 250.0 | 135.9 | 133.0 | 48.101 | ES |
| OTTESEN 27NA - OWB - Plan #2 | 17,825.8 | 17,226.5 | 1,755.7 | 1,376.0 | 4.624 | SF |
| OTTESEN 28N - OWB - Plan #2 | 250.0 | 250.0 | 150.3 | 147.5 | 53.804 | CC |
| OTTESEN 28N - OWB - Plan #2 | 400.0 | 407.6 | 151.7 | 146.2 | 27.459 | ES |
| OTTESEN 28N - OWB - Plan #2 | 17,825.8 | 17,311.6 | 1,907.5 | 1,517.0 | 4.885 | SF |
| OTTESEN 29C - OWB - Plan #2 | 250.0 | 250.0 | 164.9 | 162.1 | 59.018 | CC |
| OTTESEN 29C - OWB - Plan #2 | 400.0 | 407.4 | 166.7 | 161.3 | 30.869 | ES |
| OTTESEN 29C - OWB - Plan #2 | 17,825.8 | 17,453.4 | 2,089.5 | 1,695.5 | 5.304 | SF |

CC - Min centre to center distance or convergent point, SF - min separation factor, ES - min ellipse separation

PDC Energy Inc.
Anticollision Summary Report

| | | | |
|---------------------------|-------------------|-------------------------------------|----------------------------|
| Company: | GWP - PLANNING DB | Local Co-ordinate Reference: | Well OTTESEN 18C |
| Project: | WELD COUNTY | TVD Reference: | KB 20' @ 5096.0usft |
| Reference Site: | Ottesen Pad | MD Reference: | KB 20' @ 5096.0usft |
| Site Error: | 0.0 usft | North Reference: | True |
| Reference Well: | OTTESEN 18C | Survey Calculation Method: | Minimum Curvature |
| Well Error: | 0.0 usft | Output errors are at | 2.00 sigma |
| Reference Wellbore | OWB | Database: | EDM 5000.15 Single User Db |
| Reference Design: | Plan #2 | Offset TVD Reference: | Offset Datum |

| Summary | | | | | | |
|--------------------------------------|---------------------------------|------------------------------|---------------------------------|----------------------------------|-------------------|---------|
| Site Name | Reference Measured Depth (usft) | Offset Measured Depth (usft) | Distance Between Centres (usft) | Distance Between Ellipses (usft) | Separation Factor | Warning |
| Offset Well - Wellbore - Design | | | | | | |
| Ottesen Pad | | | | | | |
| OTTESEN 30N - OWB - OWB | 256.5 | 257.1 | 179.2 | 176.1 | 57.687 | CC |
| OTTESEN 30N - OWB - OWB | 300.0 | 301.4 | 179.6 | 176.0 | 50.159 | ES |
| OTTESEN 30N - OWB - OWB | 800.0 | 789.5 | 255.6 | 244.3 | 22.728 | SF |
| OTTESEN 30N - OWB - Plan #2 | 256.5 | 257.1 | 179.2 | 176.1 | 57.687 | CC |
| OTTESEN 30N - OWB - Plan #2 | 300.0 | 301.4 | 179.6 | 176.0 | 50.159 | ES |
| OTTESEN 30N - OWB - Plan #2 | 17,825.8 | 17,257.9 | 2,291.5 | 1,901.5 | 5.876 | SF |
| OTTESEN 31N - OWB - Plan #2 | 250.0 | 250.0 | 195.4 | 192.6 | 69.949 | CC, ES |
| OTTESEN 31N - OWB - Plan #2 | 17,825.8 | 17,252.2 | 2,475.9 | 2,084.1 | 6.319 | SF |
| OTTESEN 32NA - OWB - OWB | 204.9 | 204.9 | 208.1 | 205.4 | 78.994 | CC |
| OTTESEN 32NA - OWB - OWB | 250.0 | 249.6 | 208.2 | 205.3 | 71.968 | ES |
| OTTESEN 32NA - OWB - OWB | 800.0 | 792.0 | 281.5 | 270.8 | 26.391 | SF |
| OTTESEN 32NA - OWB - Plan #2 | 204.9 | 204.9 | 208.1 | 205.4 | 78.994 | CC |
| OTTESEN 32NA - OWB - Plan #2 | 250.0 | 249.6 | 208.2 | 205.3 | 71.968 | ES |
| OTTESEN 32NA - OWB - Plan #2 | 17,825.8 | 17,074.3 | 2,692.3 | 2,305.1 | 6.953 | SF |
| OTTESEN FEDERAL 01N - OWB - Plan #2 | 250.0 | 250.0 | 134.8 | 132.0 | 48.246 | CC |
| OTTESEN FEDERAL 01N - OWB - Plan #2 | 1,500.0 | 1,512.2 | 142.8 | 126.6 | 8.817 | ES |
| OTTESEN FEDERAL 01N - OWB - Plan #2 | 8,800.0 | 8,326.4 | 521.1 | 408.4 | 4.626 | SF |
| OTTESEN FEDERAL 02NA - OWB - Plan #2 | 250.0 | 250.0 | 145.1 | 142.3 | 51.956 | CC |
| OTTESEN FEDERAL 02NA - OWB - Plan #2 | 500.0 | 504.7 | 146.1 | 141.0 | 28.469 | ES |
| OTTESEN FEDERAL 02NA - OWB - Plan #2 | 9,100.0 | 8,270.2 | 719.8 | 605.8 | 6.310 | SF |
| OTTESEN FEDERAL 03C - OWB - Plan #2 | 250.0 | 250.0 | 156.0 | 153.2 | 55.846 | CC |
| OTTESEN FEDERAL 03C - OWB - Plan #2 | 500.0 | 505.6 | 157.5 | 152.2 | 29.565 | ES |
| OTTESEN FEDERAL 03C - OWB - Plan #2 | 9,100.0 | 8,510.4 | 385.4 | 259.0 | 3.050 | SF |
| OTTESEN FEDERAL 04N - OWB - Plan #2 | 250.0 | 250.0 | 168.3 | 165.5 | 60.261 | CC |
| OTTESEN FEDERAL 04N - OWB - Plan #2 | 500.0 | 506.7 | 170.3 | 164.8 | 30.795 | ES |
| OTTESEN FEDERAL 04N - OWB - Plan #2 | 9,400.0 | 8,465.6 | 599.5 | 473.9 | 4.773 | SF |
| OTTESEN FEDERAL 05N - OWB - Plan #2 | 250.0 | 250.0 | 180.5 | 177.7 | 64.612 | CC |
| OTTESEN FEDERAL 05N - OWB - Plan #2 | 400.0 | 404.6 | 181.3 | 177.0 | 41.825 | ES |
| OTTESEN FEDERAL 05N - OWB - Plan #2 | 9,400.0 | 8,550.0 | 487.2 | 366.8 | 4.045 | SF |
| OTTESEN FEDERAL 06NA - OWB - Plan #2 | 250.0 | 250.0 | 192.8 | 190.0 | 69.011 | CC |
| OTTESEN FEDERAL 06NA - OWB - Plan #2 | 400.0 | 405.1 | 193.8 | 189.4 | 43.986 | ES |
| OTTESEN FEDERAL 06NA - OWB - Plan #2 | 9,800.0 | 8,521.7 | 718.5 | 590.4 | 5.607 | SF |
| OTTESEN FEDERAL 07C - OWB - Plan #2 | 250.0 | 250.0 | 206.3 | 203.6 | 73.868 | CC |
| OTTESEN FEDERAL 07C - OWB - Plan #2 | 400.0 | 405.6 | 207.5 | 203.0 | 46.449 | ES |
| OTTESEN FEDERAL 07C - OWB - Plan #2 | 9,800.0 | 8,768.3 | 379.2 | 235.7 | 2.643 | SF |
| OTTESEN FEDERAL 08N - OWB - Plan #2 | 250.0 | 250.0 | 219.5 | 216.7 | 78.558 | CC |
| OTTESEN FEDERAL 08N - OWB - Plan #2 | 400.0 | 406.1 | 220.7 | 216.2 | 48.759 | ES |
| OTTESEN FEDERAL 08N - OWB - Plan #2 | 10,000.0 | 8,726.3 | 560.6 | 426.5 | 4.180 | SF |
| OTTESEN FEDERAL 09N - OWB - Plan #2 | 250.0 | 250.0 | 232.8 | 230.0 | 83.323 | CC |
| OTTESEN FEDERAL 09N - OWB - Plan #2 | 400.0 | 406.6 | 234.1 | 229.5 | 51.211 | ES |
| OTTESEN FEDERAL 09N - OWB - Plan #2 | 10,200.0 | 8,850.0 | 515.2 | 369.2 | 3.527 | SF |
| OTTESEN FEDERAL 10NA - OWB - Plan #2 | 250.0 | 250.0 | 246.0 | 243.2 | 88.060 | CC |
| OTTESEN FEDERAL 10NA - OWB - Plan #2 | 400.0 | 407.0 | 247.4 | 242.8 | 53.678 | ES |
| OTTESEN FEDERAL 10NA - OWB - Plan #2 | 10,400.0 | 8,816.2 | 674.0 | 537.1 | 4.923 | SF |
| OTTESEN FEDERAL 11C - OWB - OWB | 244.4 | 244.4 | 259.2 | 256.3 | 89.112 | CC |
| OTTESEN FEDERAL 11C - OWB - OWB | 250.0 | 249.9 | 259.2 | 256.3 | 88.037 | ES |
| OTTESEN FEDERAL 11C - OWB - OWB | 1,700.0 | 1,736.0 | 490.8 | 470.3 | 23.961 | SF |
| OTTESEN FEDERAL 11C - OWB - Plan #2 | 244.4 | 244.4 | 259.2 | 256.3 | 89.112 | CC |
| OTTESEN FEDERAL 11C - OWB - Plan #2 | 10,300.0 | 9,162.9 | 331.0 | 191.0 | 2.365 | ES |
| OTTESEN FEDERAL 11C - OWB - Plan #2 | 10,400.0 | 9,190.1 | 349.5 | 193.7 | 2.243 | SF |
| OTTESEN FEDERAL 12N - OWB - OWB | 0.0 | 0.0 | 273.8 | | | |
| OTTESEN FEDERAL 12N - OWB - OWB | 250.0 | 249.7 | 274.7 | 272.0 | 100.252 | ES |
| OTTESEN FEDERAL 12N - OWB - OWB | 1,700.0 | 1,742.0 | 615.2 | 595.3 | 30.815 | SF |

CC - Min centre to center distance or convergent point, SF - min separation factor, ES - min ellipse separation

PDC Energy Inc.
Anticollision Summary Report

| | | | |
|---------------------------|-------------------|-------------------------------------|----------------------------|
| Company: | GWP - PLANNING DB | Local Co-ordinate Reference: | Well OTTESEN 18C |
| Project: | WELD COUNTY | TVD Reference: | KB 20' @ 5096.0usft |
| Reference Site: | Ottesen Pad | MD Reference: | KB 20' @ 5096.0usft |
| Site Error: | 0.0 usft | North Reference: | True |
| Reference Well: | OTTESEN 18C | Survey Calculation Method: | Minimum Curvature |
| Well Error: | 0.0 usft | Output errors are at | 2.00 sigma |
| Reference Wellbore | OWB | Database: | EDM 5000.15 Single User Db |
| Reference Design: | Plan #2 | Offset TVD Reference: | Offset Datum |

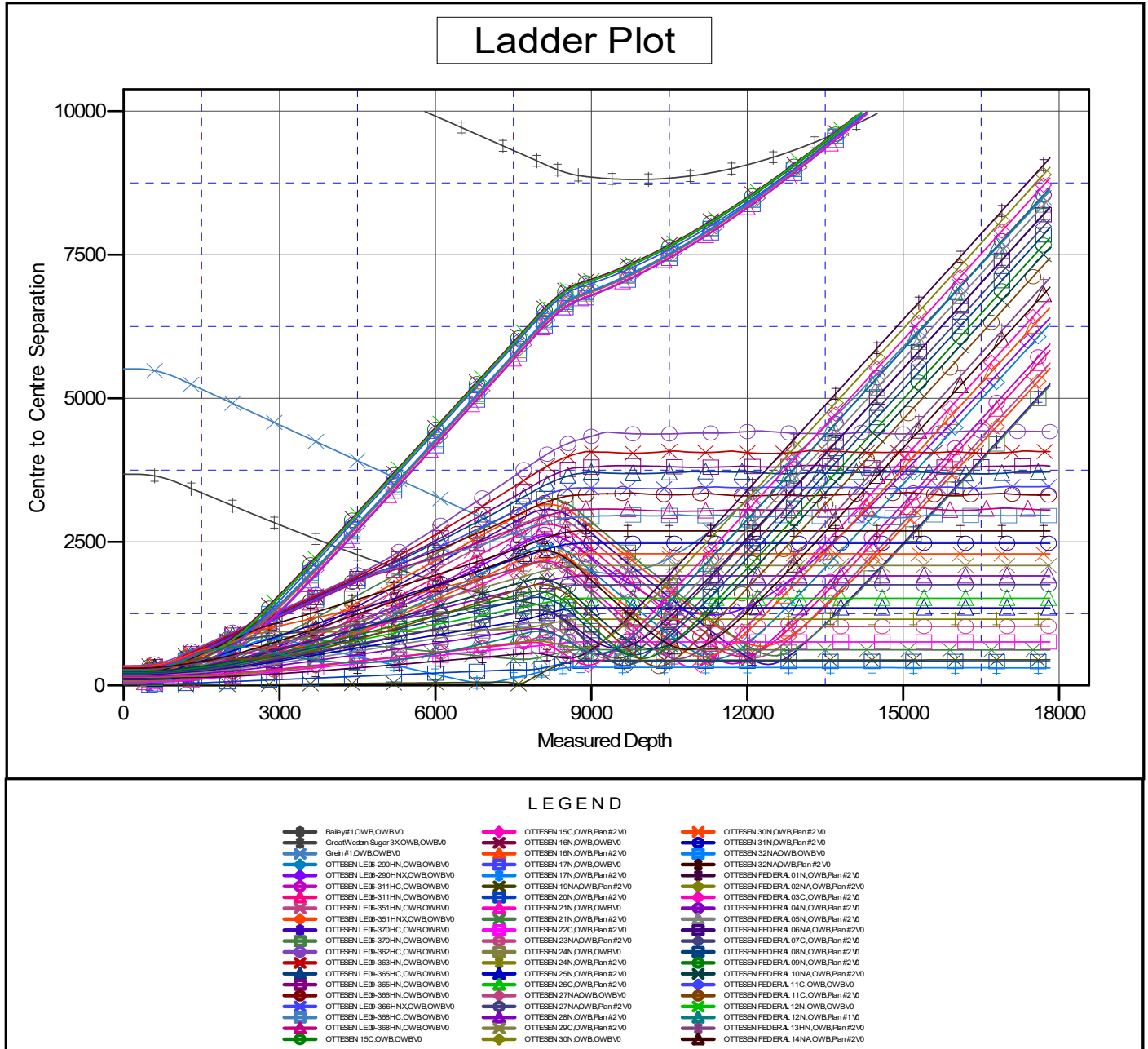
| Summary | | | | | | |
|--------------------------------------|---------------------------------|------------------------------|---------------------------------|----------------------------------|-------------------|---------|
| Site Name | Reference Measured Depth (usft) | Offset Measured Depth (usft) | Distance Between Centres (usft) | Distance Between Ellipses (usft) | Separation Factor | Warning |
| Offset Well - Wellbore - Design | | | | | | |
| Ottesen Pad | | | | | | |
| OTTESEN FEDERAL 12N - OWB - Plan #1 | 0.0 | 0.0 | 273.8 | | | |
| OTTESEN FEDERAL 12N - OWB - Plan #1 | 250.0 | 249.7 | 274.7 | 272.0 | 100.252 | ES |
| OTTESEN FEDERAL 12N - OWB - Plan #1 | 9,300.0 | 8,750.0 | 579.4 | 453.9 | 4.617 | SF |
| OTTESEN FEDERAL 13HN - OWB - Plan #2 | 250.0 | 250.0 | 287.8 | 285.0 | 103.026 | CC |
| OTTESEN FEDERAL 13HN - OWB - Plan #2 | 400.0 | 408.2 | 289.5 | 284.8 | 61.583 | ES |
| OTTESEN FEDERAL 13HN - OWB - Plan #2 | 10,800.0 | 9,150.0 | 482.3 | 329.7 | 3.161 | SF |
| OTTESEN FEDERAL 14NA - OWB - Plan #2 | 250.0 | 250.0 | 301.8 | 299.0 | 108.024 | CC |
| OTTESEN FEDERAL 14NA - OWB - Plan #2 | 400.0 | 408.6 | 303.6 | 298.9 | 64.268 | ES |
| OTTESEN FEDERAL 14NA - OWB - Plan #2 | 11,100.0 | 9,168.1 | 669.3 | 517.1 | 4.398 | SF |

PDC Energy Inc.
Anticollision Summary Report

| | | | |
|---------------------------|-------------------|-------------------------------------|----------------------------|
| Company: | GWP - PLANNING DB | Local Co-ordinate Reference: | Well OTTESEN 18C |
| Project: | WELD COUNTY | TVD Reference: | KB 20' @ 5096.0usft |
| Reference Site: | Ottesen Pad | MD Reference: | KB 20' @ 5096.0usft |
| Site Error: | 0.0 usft | North Reference: | True |
| Reference Well: | OTTESEN 18C | Survey Calculation Method: | Minimum Curvature |
| Well Error: | 0.0 usft | Output errors are at | 2.00 sigma |
| Reference Wellbore | OWB | Database: | EDM 5000.15 Single User Db |
| Reference Design: | Plan #2 | Offset TVD Reference: | Offset Datum |

Reference Depths are relative to KB 20' @ 5096.0usft
Offset Depths are relative to Offset Datum
Central Meridian is 105° 30' 0.000 W

Coordinates are relative to: OTTESEN 18C
Coordinate System is US State Plane 1983, Colorado Northern Zone
Grid Convergence at Surface is: 0.47°



CC - Min centre to center distance or convergent point, SF - min separation factor, ES - min ellipse separation

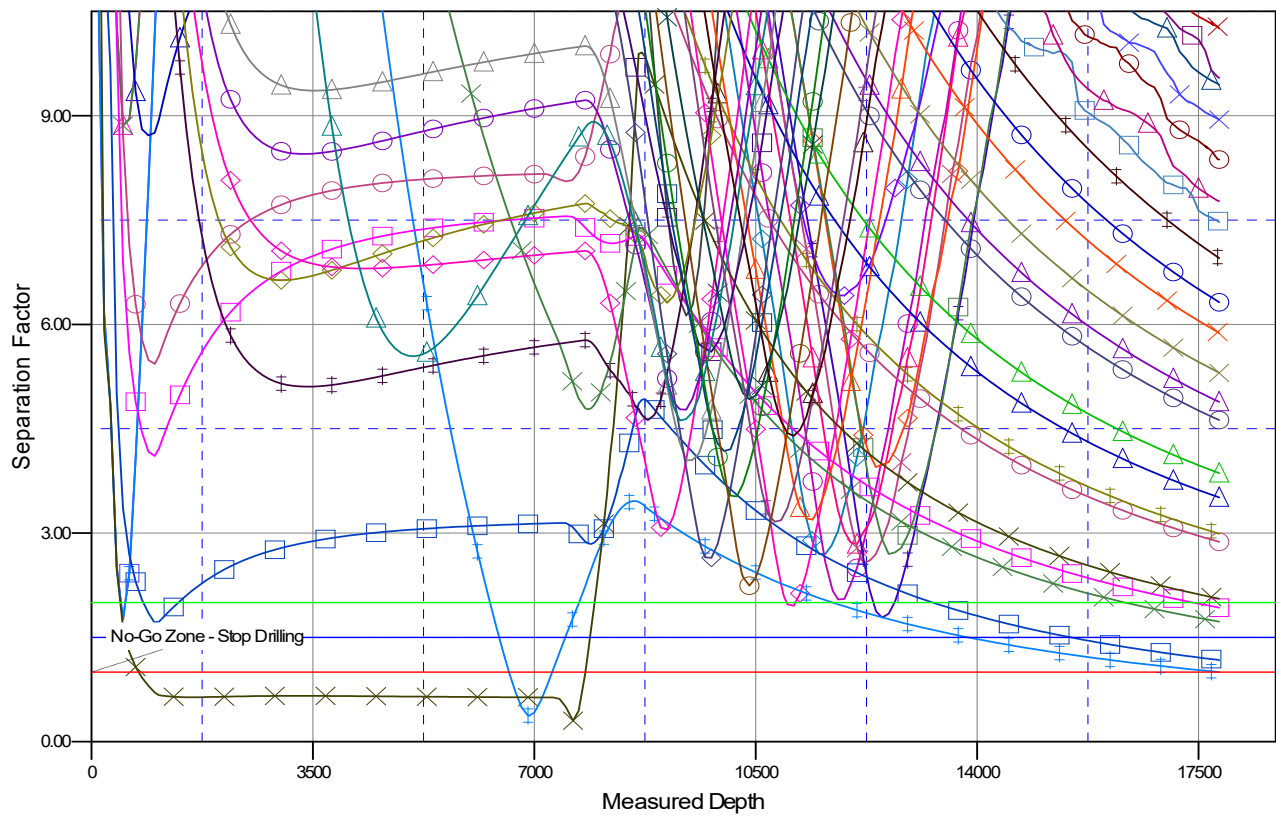
PDC Energy Inc.
Anticollision Summary Report

| | | | |
|---------------------------|-------------------|-------------------------------------|----------------------------|
| Company: | GWP - PLANNING DB | Local Co-ordinate Reference: | Well OTTESEN 18C |
| Project: | WELD COUNTY | TVD Reference: | KB 20' @ 5096.0usft |
| Reference Site: | Ottesen Pad | MD Reference: | KB 20' @ 5096.0usft |
| Site Error: | 0.0 usft | North Reference: | True |
| Reference Well: | OTTESEN 18C | Survey Calculation Method: | Minimum Curvature |
| Well Error: | 0.0 usft | Output errors are at | 2.00 sigma |
| Reference Wellbore | OWB | Database: | EDM 5000.15 Single User Db |
| Reference Design: | Plan #2 | Offset TVD Reference: | Offset Datum |

Reference Depths are relative to KB 20' @ 5096.0usft
Offset Depths are relative to Offset Datum
Central Meridian is 105° 30' 0.000 W

Coordinates are relative to: OTTESEN 18C
Coordinate System is US State Plane 1983, Colorado Northern Zone
Grid Convergence at Surface is: 0.47°

Separation Factor Plot



LEGEND

| | | |
|---------------------------------|---------------------------|------------------------------------|
| Bailey#1,OWB,OWB#0 | OTTESEN 15C,OWB,Plan#2 V0 | OTTESEN 30N,OWB,Plan#2 V0 |
| GrestWell#1, Sugar SX,OWB,OWB#0 | OTTESEN 16N,OWB,OWB#0 | OTTESEN 31N,OWB,Plan#2 V0 |
| Green#1,OWB,OWB#0 | OTTESEN 16N,OWB,Plan#2 V0 | OTTESEN 32N,OWB,OWB#0 |
| OTTESEN LE03-290HN,OWB,OWB#0 | OTTESEN 17N,OWB,OWB#0 | OTTESEN 32N,OWB,Plan#2 V0 |
| OTTESEN LE03-290HN,OWB,OWB#0 | OTTESEN 17N,OWB,Plan#2 V0 | OTTESEN FEDERAL 01N,OWB,Plan#2 V0 |
| OTTESEN LE03-311HN,OWB,OWB#0 | OTTESEN 18N,OWB,Plan#2 V0 | OTTESEN FEDERAL 02NA,OWB,Plan#2 V0 |
| OTTESEN LE03-311HN,OWB,OWB#0 | OTTESEN 21N,OWB,OWB#0 | OTTESEN FEDERAL 03C,OWB,Plan#2 V0 |
| OTTESEN LE03-351HN,OWB,OWB#0 | OTTESEN 21N,OWB,Plan#2 V0 | OTTESEN FEDERAL 04N,OWB,Plan#2 V0 |
| OTTESEN LE03-370HC,OWB,OWB#0 | OTTESEN 22C,OWB,Plan#2 V0 | OTTESEN FEDERAL 05N,OWB,Plan#2 V0 |
| OTTESEN LE03-370HN,OWB,OWB#0 | OTTESEN 23N,OWB,Plan#2 V0 | OTTESEN FEDERAL 06NA,OWB,Plan#2 V0 |
| OTTESEN LE03-362HC,OWB,OWB#0 | OTTESEN 24N,OWB,OWB#0 | OTTESEN FEDERAL 07C,OWB,Plan#2 V0 |
| OTTESEN LE03-363HN,OWB,OWB#0 | OTTESEN 24N,OWB,Plan#2 V0 | OTTESEN FEDERAL 08N,OWB,Plan#2 V0 |
| OTTESEN LE03-365HC,OWB,OWB#0 | OTTESEN 25N,OWB,Plan#2 V0 | OTTESEN FEDERAL 09N,OWB,Plan#2 V0 |
| OTTESEN LE03-365HN,OWB,OWB#0 | OTTESEN 26C,OWB,Plan#2 V0 | OTTESEN FEDERAL 10NA,OWB,Plan#2 V0 |
| OTTESEN LE03-366HN,OWB,OWB#0 | OTTESEN 27N,OWB,OWB#0 | OTTESEN FEDERAL 11C,OWB,Plan#2 V0 |
| OTTESEN LE03-366HN,OWB,OWB#0 | OTTESEN 27N,OWB,Plan#2 V0 | OTTESEN FEDERAL 12N,OWB,OWB#0 |
| OTTESEN LE03-368HC,OWB,OWB#0 | OTTESEN 28N,OWB,Plan#2 V0 | OTTESEN FEDERAL 12N,OWB,Plan#1 V0 |
| OTTESEN LE03-368HN,OWB,OWB#0 | OTTESEN 29C,OWB,Plan#2 V0 | OTTESEN FEDERAL 13HN,OWB,Plan#2 V0 |
| OTTESEN 15C,OWB,OWB#0 | OTTESEN 30N,OWB,OWB#0 | OTTESEN FEDERAL 14NA,OWB,Plan#2 V0 |

CC - Min centre to center distance or convergent point, SF - min separation factor, ES - min ellipse separation