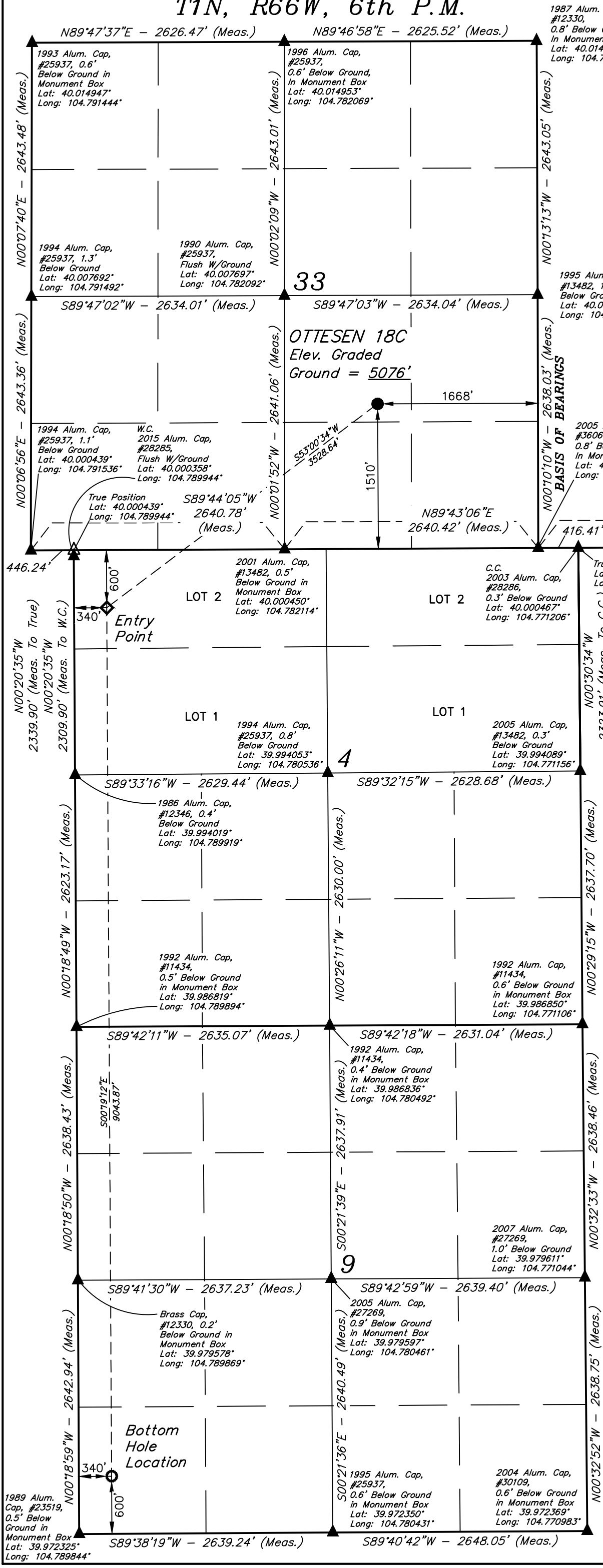
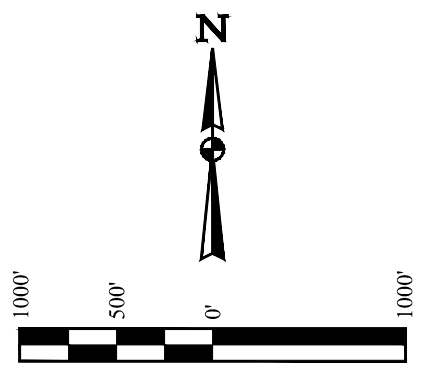


T1N, R66W, 6th P.M.



- LEGEND:
- = SURFACE LOCATION.
 - ◆ = ENTRY POINT.
 - = BOTTOM HOLE LOCATION.
 - ▲ = SECTION CORNERS LOCATED. (NAD 83)
 - △ = SECTION CORNERS RE-ESTABLISHED. (Not Set on Ground.) (NAD 83)

NOTE:
Distances referenced on plat to section lines are perpendicular.



BASIS OF ELEVATION
USGS COOPERATIVE BASE NETWORK CONTROL STATION, DESIGNATION "JR 53 5026". NGS DATA SHEET LISTS THE NAVD 88 ELEVATION AS BEING 5028 FEET.

PDOP = 1.3	NAD 83 (SURFACE LOCATION) LATITUDE = 40°00'16.56" (40.004600°) LONGITUDE = 104°46'43.12" (104.778644°)
	NAD 83 (ENTRY POINT) LATITUDE = 39°59'55.66" (39.998795°) LONGITUDE = 104°47'19.41" (104.788724°)
	NAD 83 (BOTTOM HOLE LOCATION) LATITUDE = 39°58'26.31" (39.973975°) LONGITUDE = 104°47'19.09" (104.788637°)

T1S, R66W, 6th P.M.

CERTIFICATE
THIS IS TO CERTIFY THAT THE ABOVE PLAT WAS PREPARED FROM FIELD NOTES OF ACTUAL SURVEYS MADE BY ME OR UNDER MY SUPERVISION AND THAT THE SAME ARE TRUE AND CORRECT TO THE BEST OF MY KNOWLEDGE AND BELIEF.



PDC ENERGY INC.

OTTESEN 18C
NW 1/4 SE 1/4, SECTION 33, T1N, R66W, 6th P.M.
WELD COUNTY, COLORADO

UINTAH
ENGINEERING & LAND SURVEYING

UELS, LLC
Corporate Office * 85 South 200 East
Vernal, UT 84078 * (435) 789-1017

SURVEYED BY: DALLAS NIELSEN, C.M.	DATE: 06-30-16
DRAWN BY: P.M.	DATE DRAWN: 10-26-22
SCALE: 1" = 1000'	

WELL LOCATION PLAT