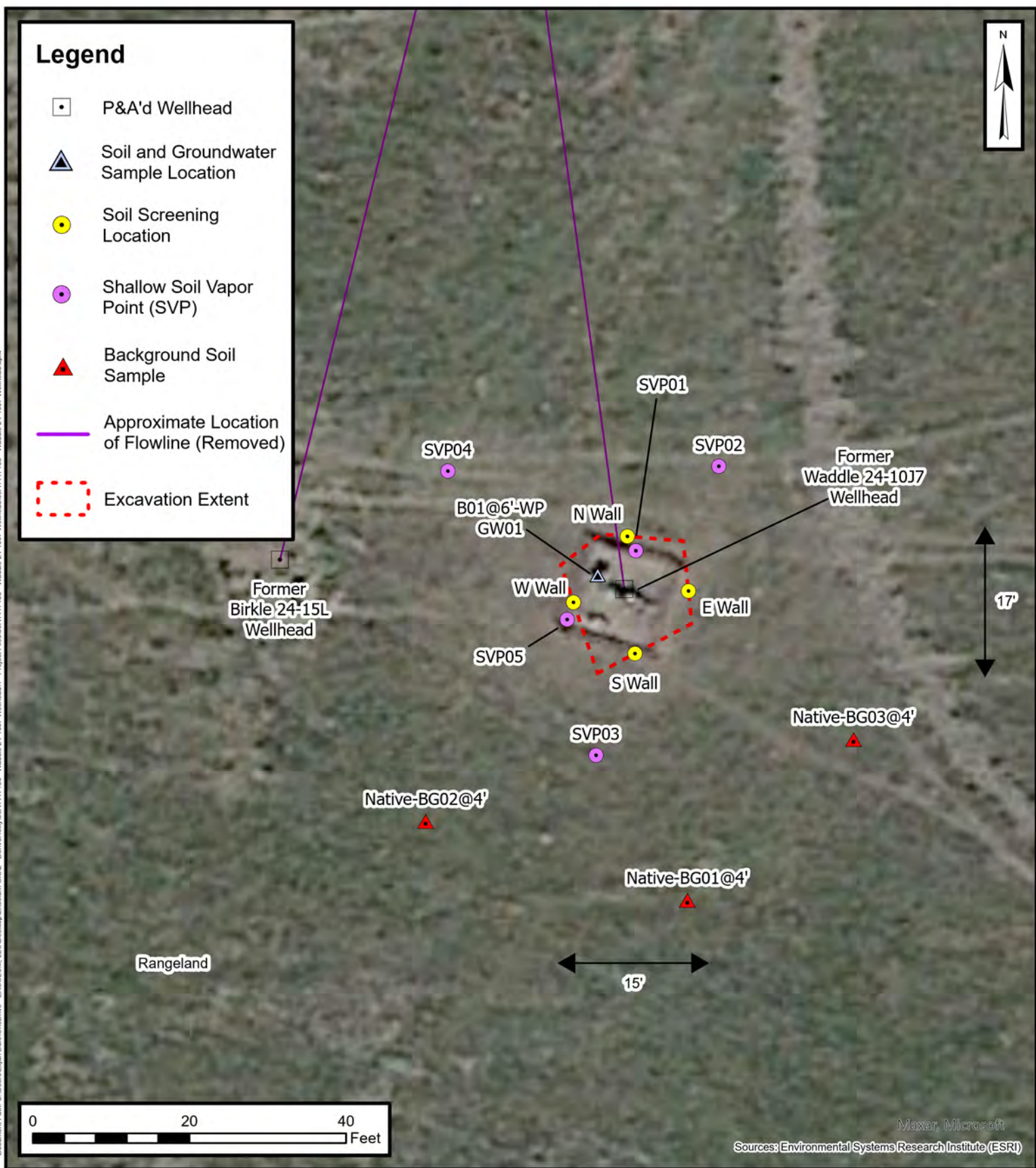


Document Path: C:\Users\Elajah\Desktop\Elajah GIS2 - Denver\09A1417156 - Waddle 24-10J7 Wellhead\1 - Project Files\09A1417156 - Waddle 24-10J7 Wellhead.aprx



Wellhead Excavation Site Map

Waddle 24-10J7 Wellhead
Kerr-McGee Oil & Gas Onshore, LP
SWSE Sec 24-T3N-R67W
Weld County, CO
Project Number: 09A1417156