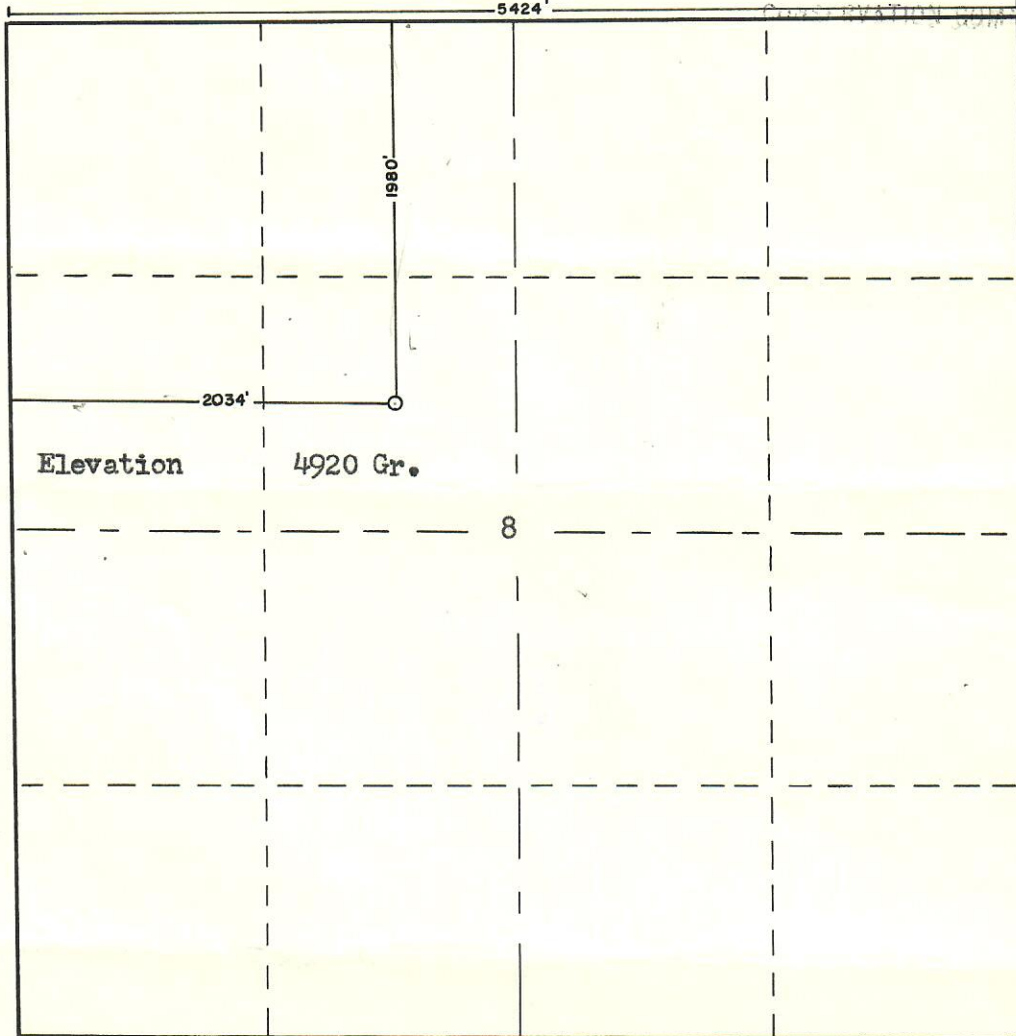


R. 59 W.

OIL & GAS



T.
3
S.

Scale ... 1" = 1000'

Powers Elevation Company of Casper, Wyoming
has in accordance with a request from Mr. Brinkerhoff
for Brinkerhoff Drilling Company determined the

Location of #1 Gorden

to be C SE NW

Section 8 Township 3 South

Range 59 West

6th Principal

Meridian

Adams

County,

Colorado

The above Plat shows the location of the well site
in said section.

Powers Elevation Company

by: *Burr Leibert*

Burr Leibert

Registered Land Surveyor

Date: 11-11-55