

## Xbolt GAMMA RAY

1in/100ft Measured Depth

Final Print

Recorded Mode

Schlumberger

Company: PDC Energy Inc

Well: Schrute 4N

Field Name: Wattenberg

Country Name: United States

State Name: Colorado

County Name: Weld

Latitude: 40°23'53.845"N

Longitude: 104°33'29.365"W

Spud Date: 03-Sep-2022

Log Interval: 1703.00--17756.00(ft)

Depth Source: Driller's Depth

Log Measured From: Drill Floor

Rig Floor above Ground Level: 28.00(ft)

Ground Level above Mean Sea Level: 4613.00 (ft)

API Number: 05-123-50959

Rig Name: Ensign 142

Rig Type: Land rig

Job Number: 22CC00394

Print Type: Final Print

Nothing: 1389330.57(ft)

Easting: 3262314.74(ft)

Coordinate System: Plane, Northern Zone, US Feet

## Disclaimer

THE USE OF AND RELIANCE UPON THIS RECORDED-DATA BY THE HEREIN NAMED COMPANY (AND ANY OF ITS AFFILIATES, PARTNERS, REPRESENTATIVES, AGENTS, CONSULTANTS AND EMPLOYEES) IS SUBJECT TO THE TERMS AND CONDITIONS AGREED UPON BETWEEN SCHLUMBERGER AND THE COMPANY, INCLUDING: (a) RESTRICTIONS ON USE OF THE RECORDED-DATA; (b) DISCLAIMERS AND WAIVERS OF WARRANTIES AND REPRESENTATIONS REGARDING COMPANY'S USE AND RELIANCE UPON THE RECORDED-DATA; AND (c) CUSTOMER'S FULL AND SOLE RESPONSIBILITY FOR ANY INFERENCE DRAWN OR DECISION MADE IN CONNECTION WITH THE USE OF THIS RECORDED-DATA.

## Operational Run Summary

## Notes

## Run 1 (Bit Size: 8.5 in)

DateTime Log Started	04-Sep-2022 05:11:44	DateTime Log Finished	06-Sep-2022 06:57:44
Start Depth (ft)	1703	Stop Depth (ft)	12315
Mud Type	Oil Based Mud	Mud Density (lbm/gal)	10.3
Potassium (%)	0	Barite	Yes
GR Sensor Offset (ft)	20.18	Calibration Coefficient	0
DNI Sensor Offset (ft)	25.53		

## Run 2 (Bit Size: 8.5 in)

DateTime Log Started	06-Sep-2022 06:57:45	DateTime Log Finished	07-Sep-2022 22:35:17
Start Depth (ft)	12315	Stop Depth (ft)	17756
Mud Type	Oil Based Mud	Mud Density (lbm/gal)	10.3
Potassium (%)	0	Barite	Yes
GR Sensor Offset (ft)	19.75	Calibration Coefficient	0

DNI Sensor Offset (ft)

25.1

# Log

Description: Xbolt GAMMA RAY

Format: XBOLT\_PDC

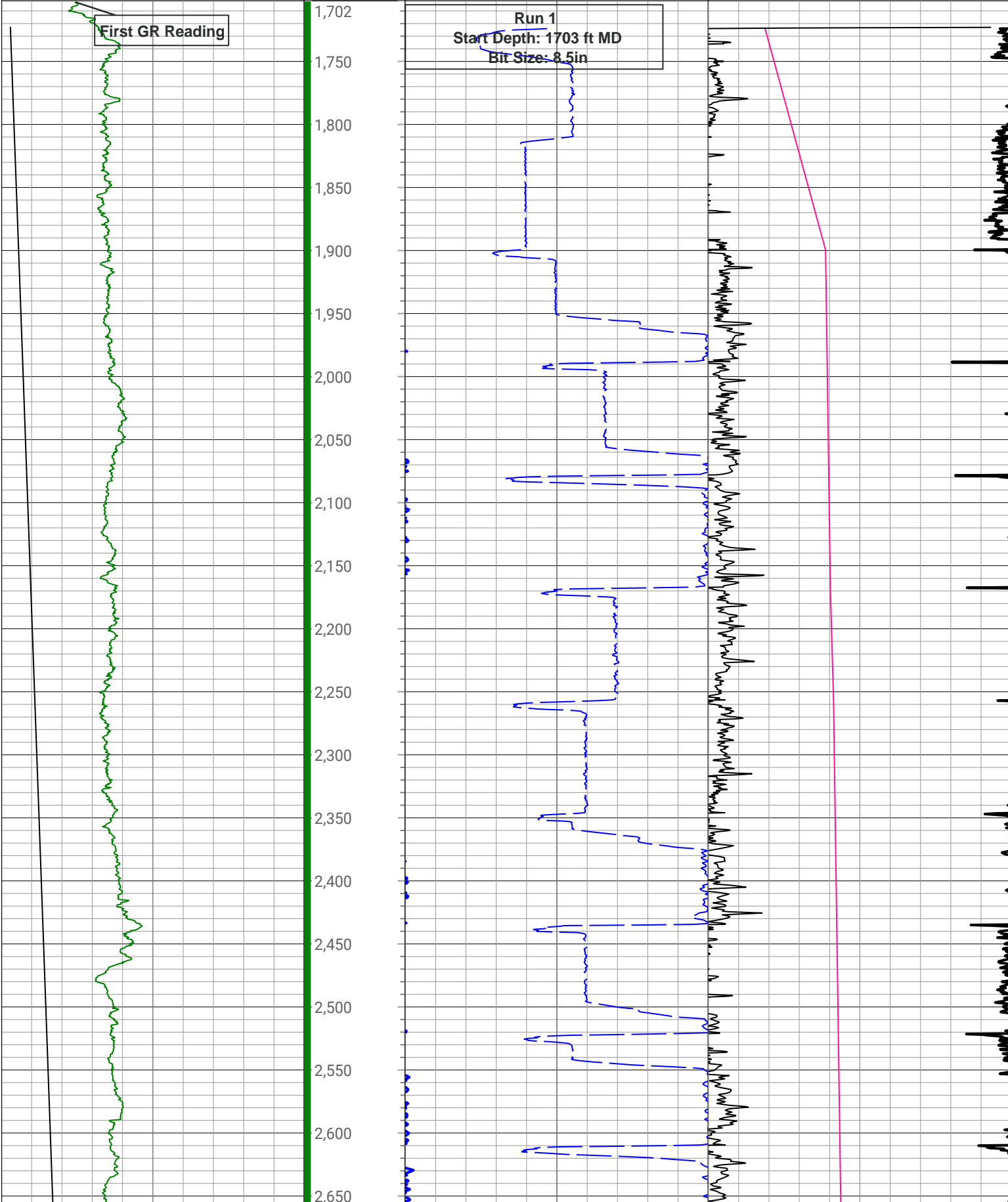
Index Scale: 1in/100ft

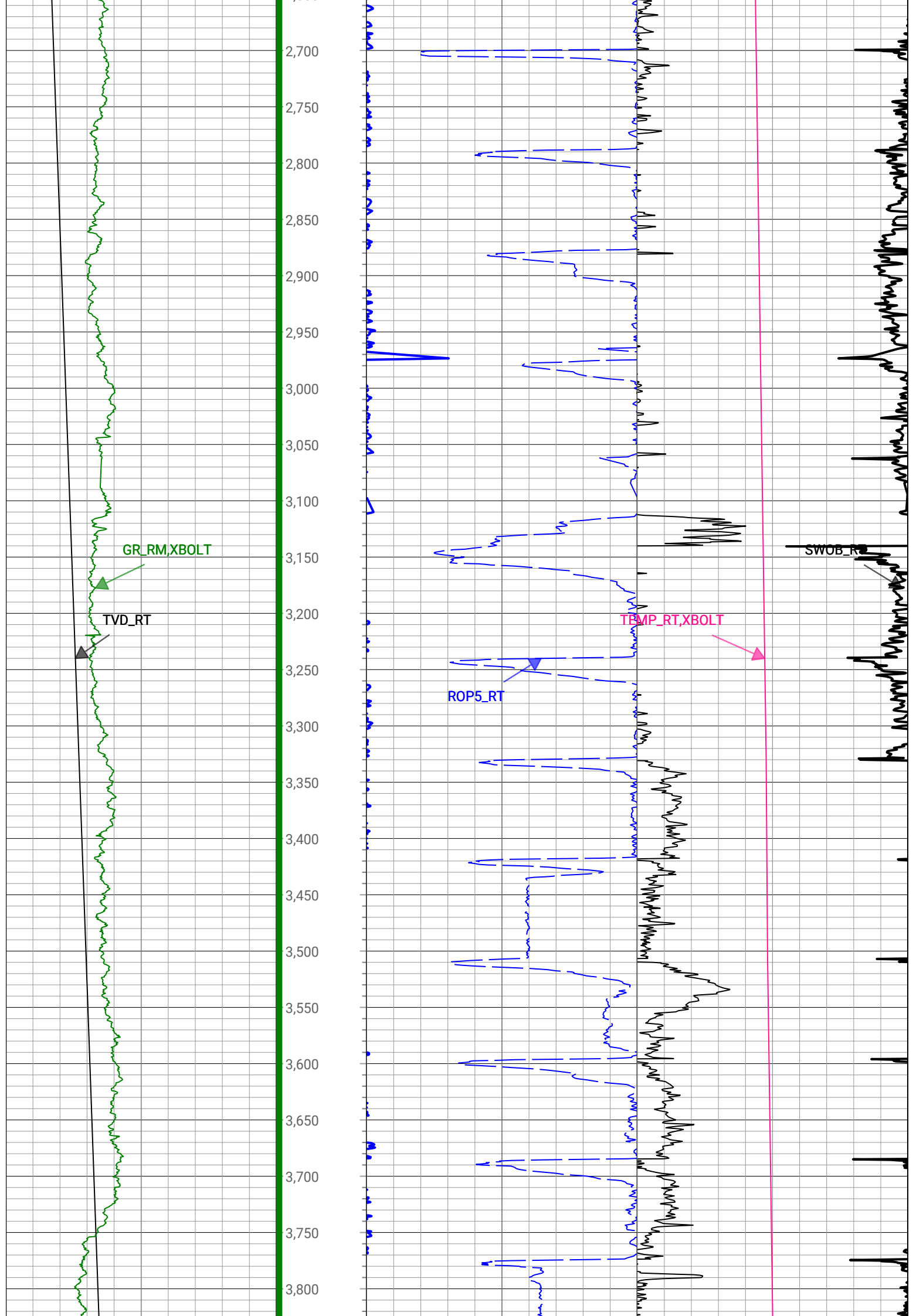
Index Unit: ft

Index Type: Measured Depth

Creation Date: 08-Sep-2022

TVD_RT		Depth 1 : 100 in : ft	ROP5_RT		TEMP_RT,XBOLT	
1,500	ft, Borehole 7,500		0	ft/h, Borehole 1,000	0	degF, Borehole 300
GR_RM,XBOLT					SWOB_RT	
0	gAPI, Borehole 300		0		0	1000 lbf, Borehole 50





2,700  
2,750  
2,800  
2,850  
2,900  
2,950  
3,000  
3,050  
3,100  
3,150  
3,200  
3,250  
3,300  
3,350  
3,400  
3,450  
3,500  
3,550  
3,600  
3,650  
3,700  
3,750  
3,800

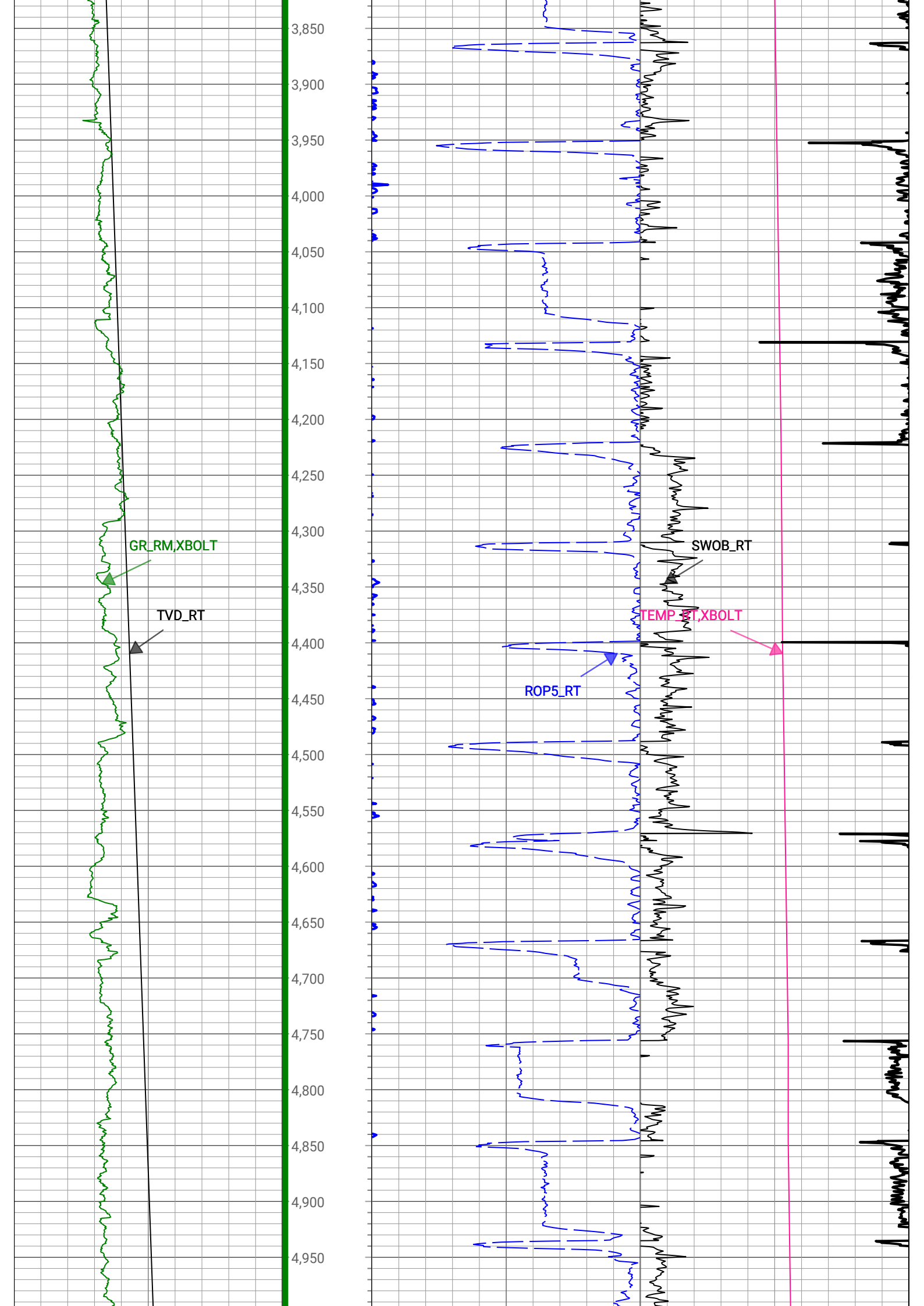
GR\_RM, XBOLT

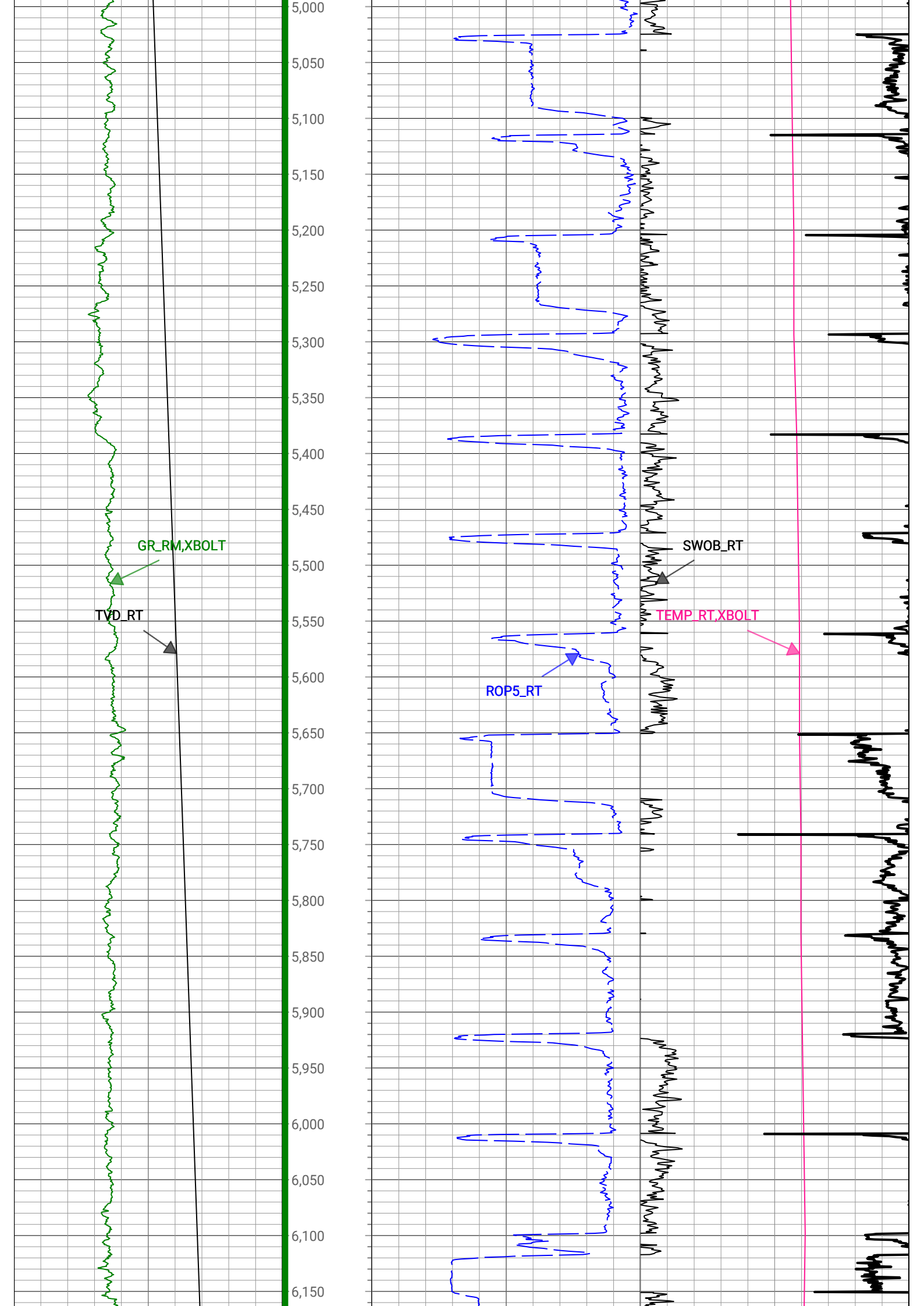
TVD\_RT

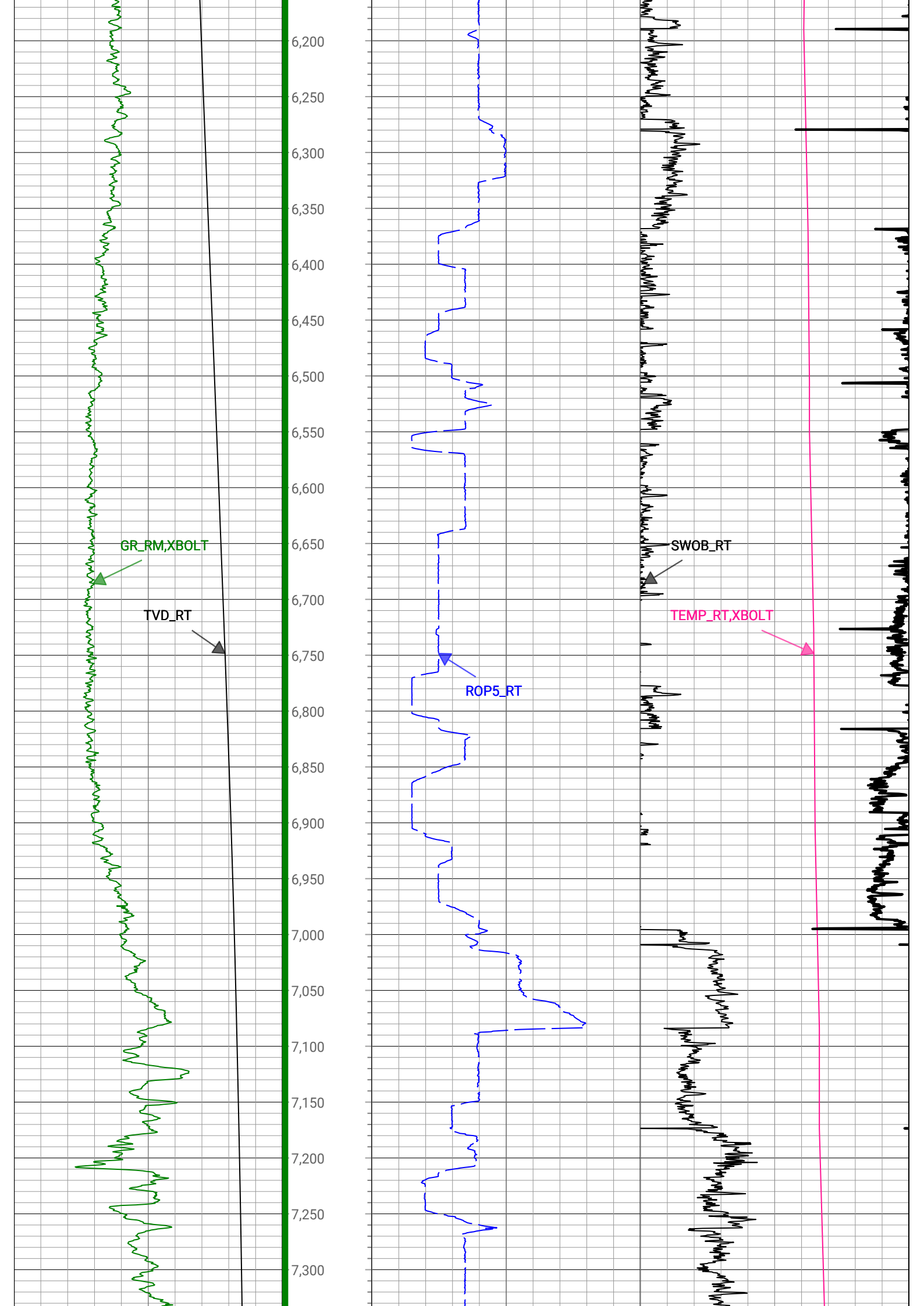
ROP5\_RT

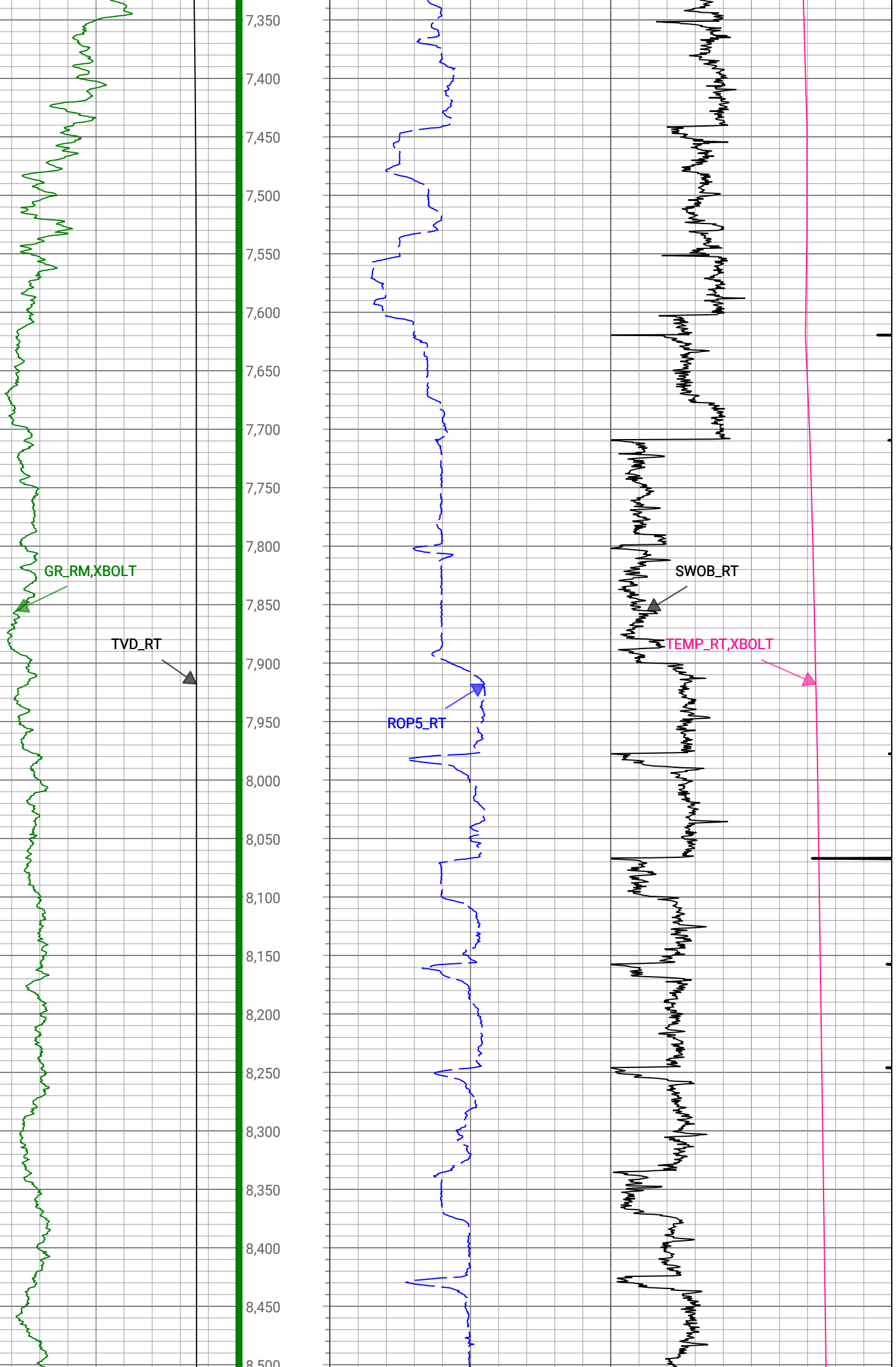
TEMP\_RT, XBOLT

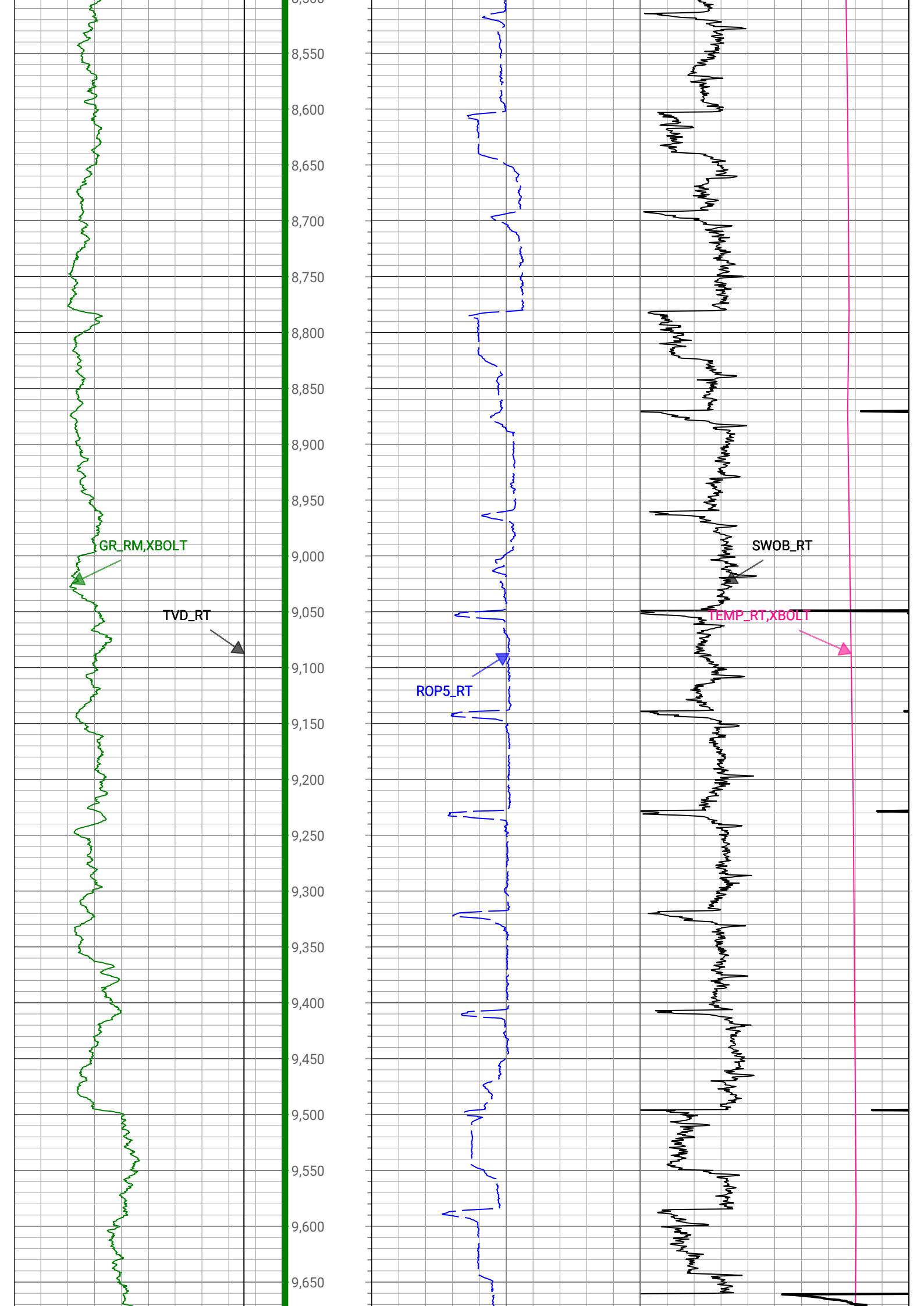
SWOB\_RT

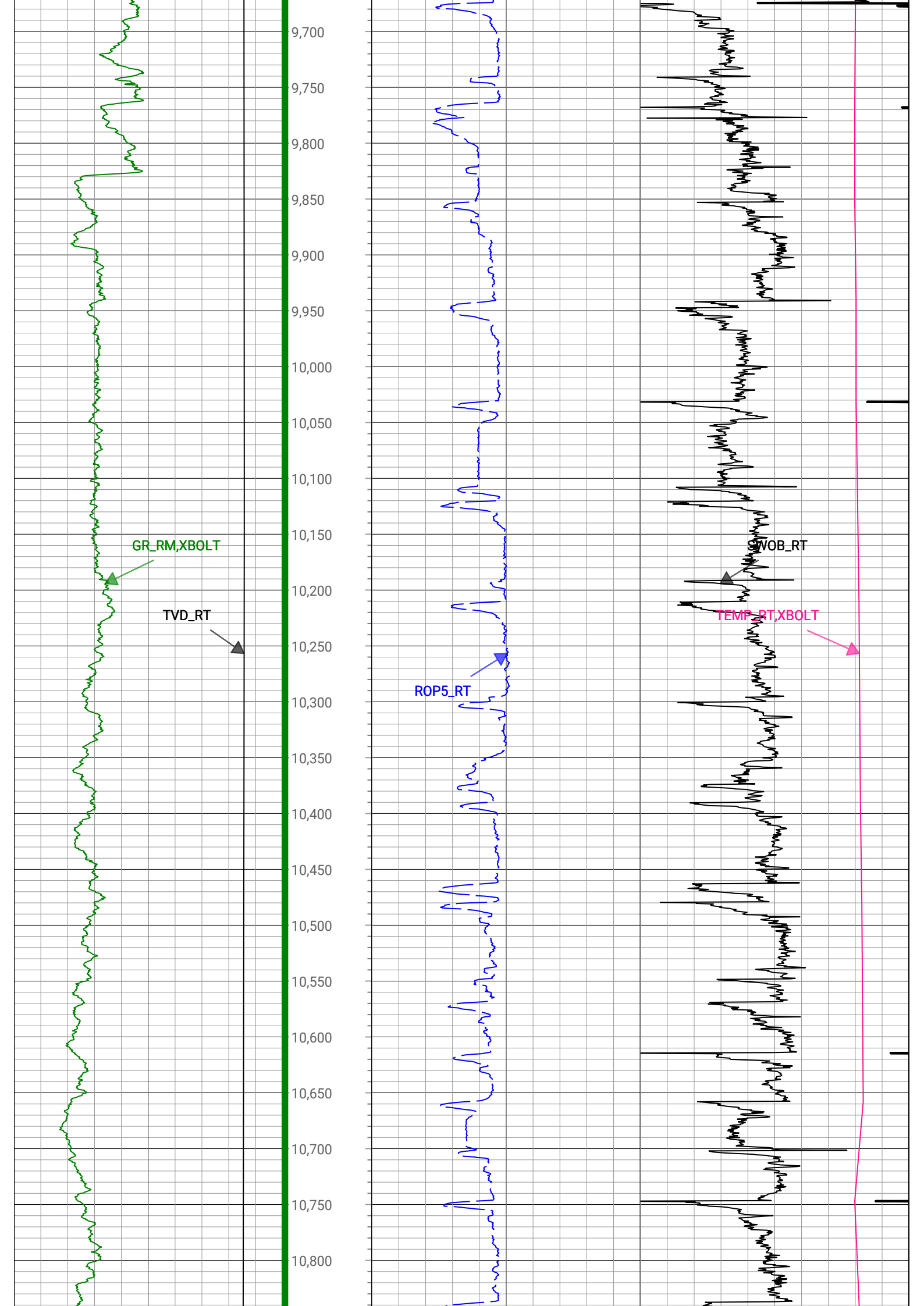


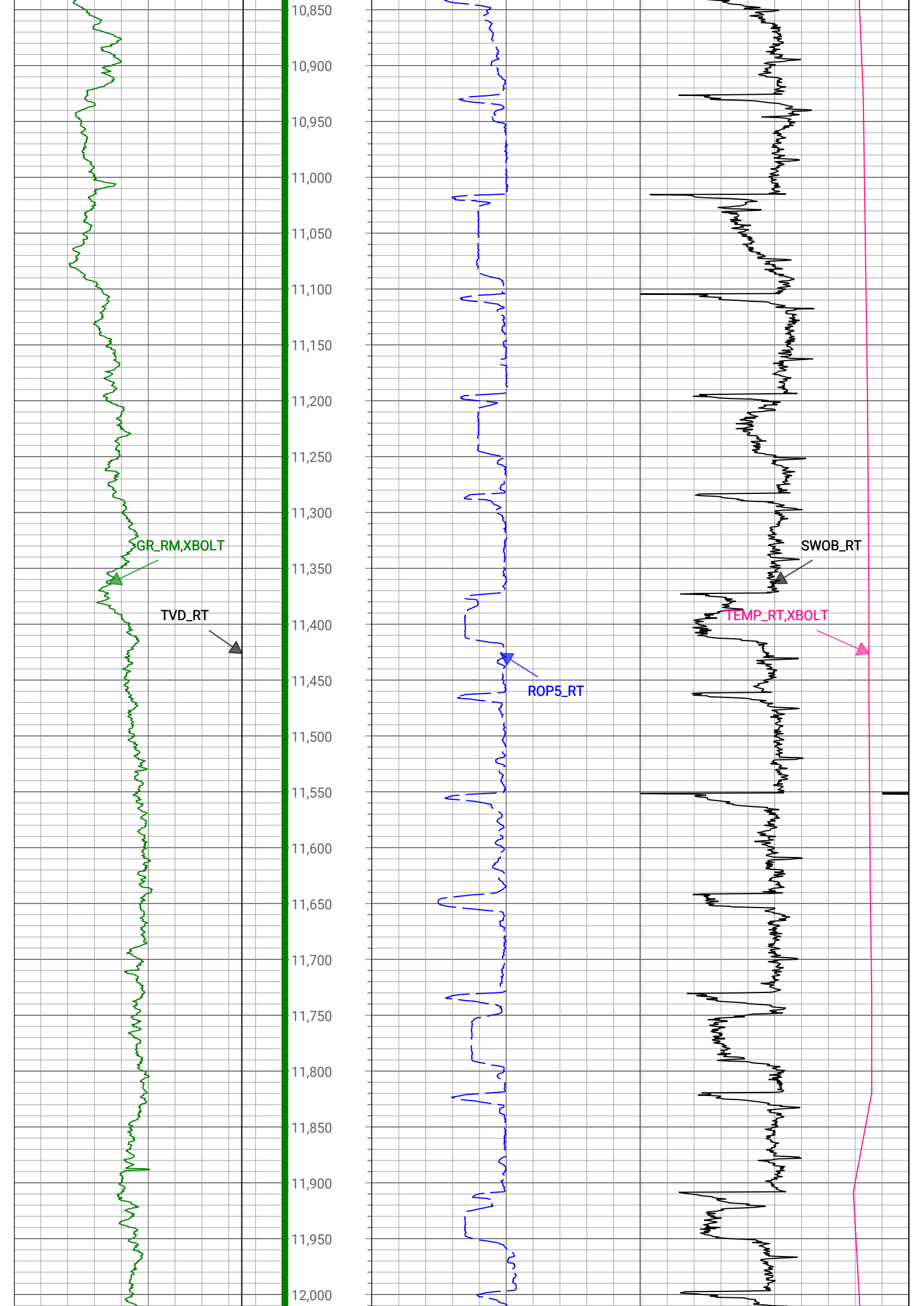


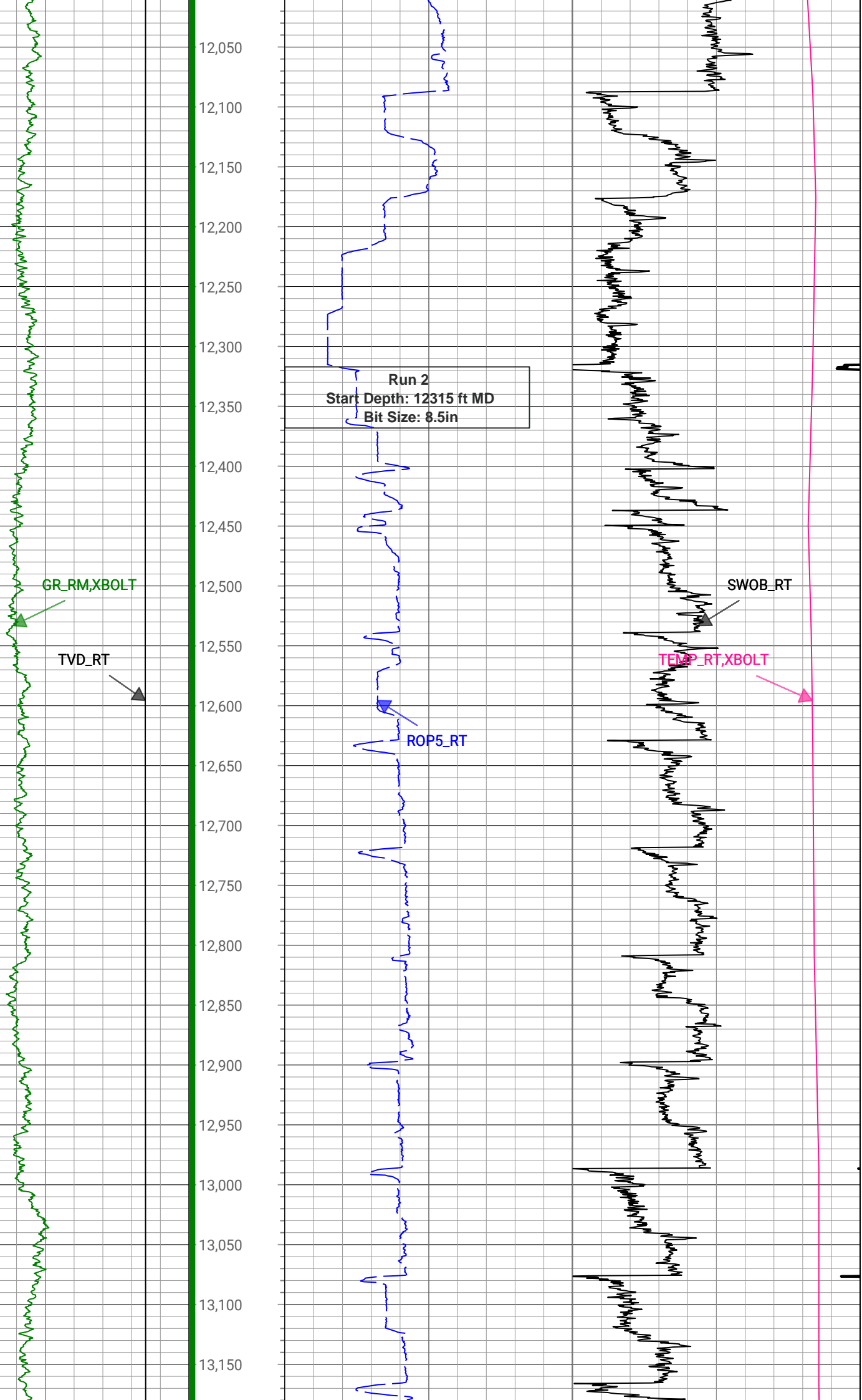


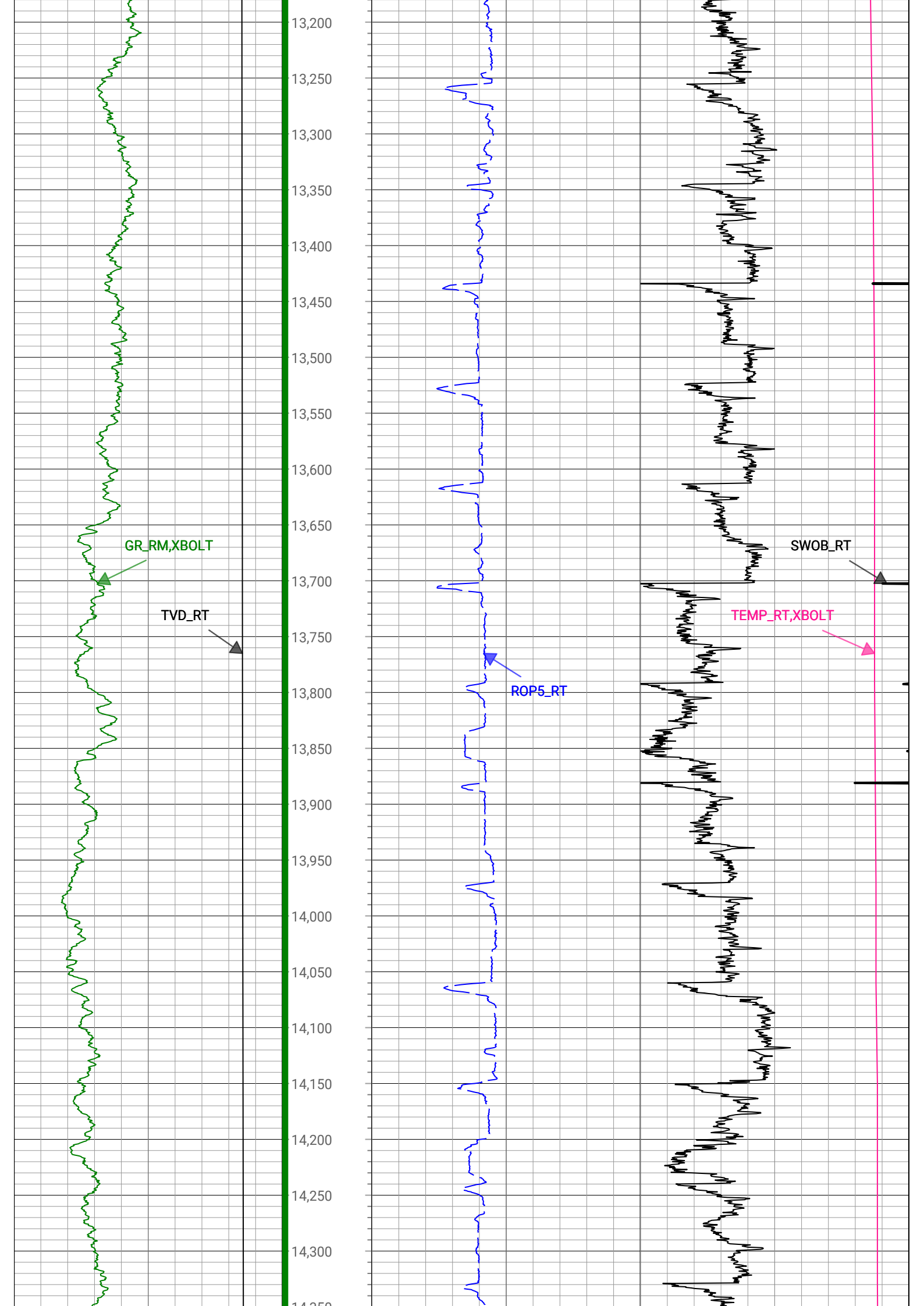


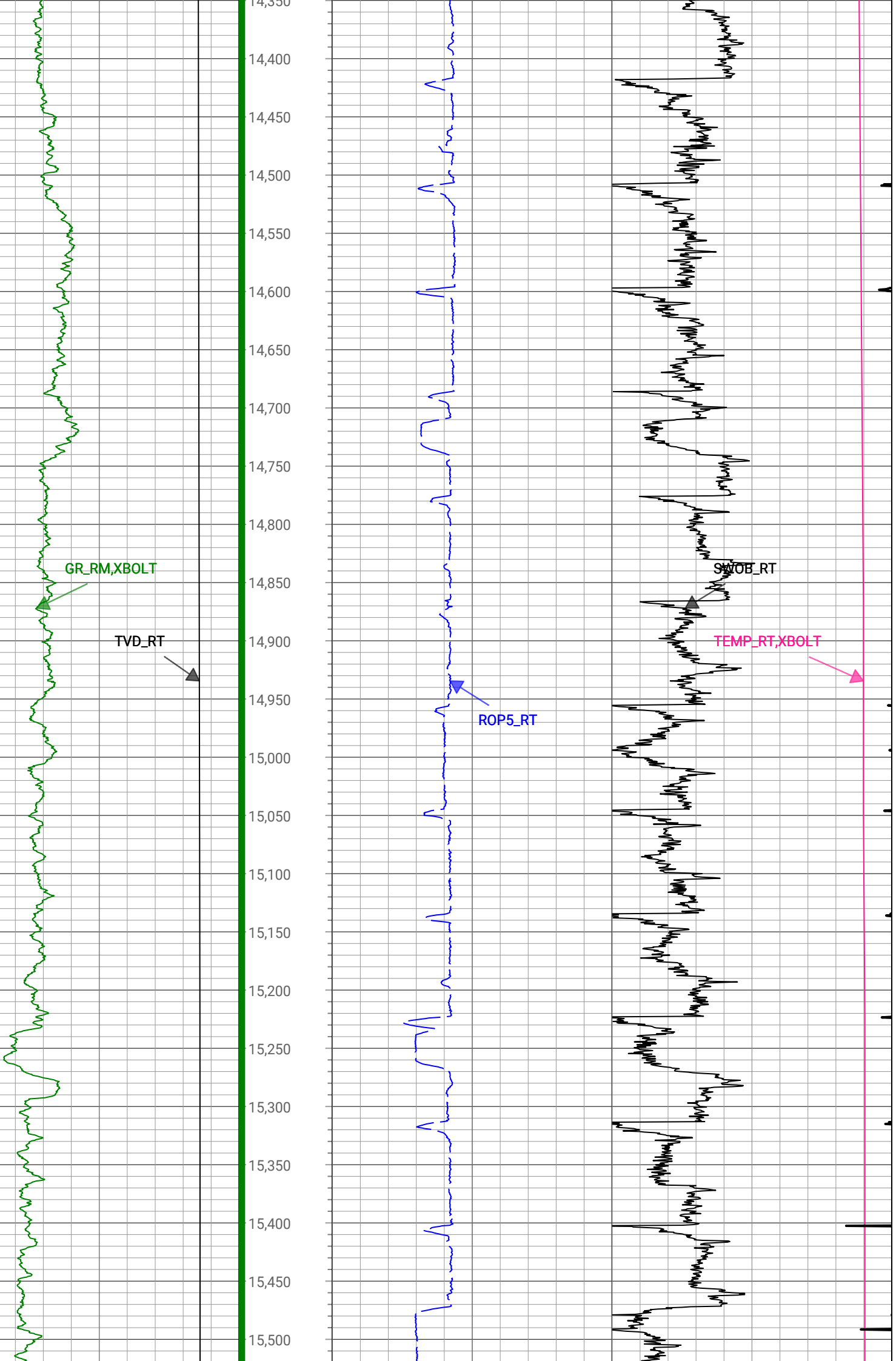


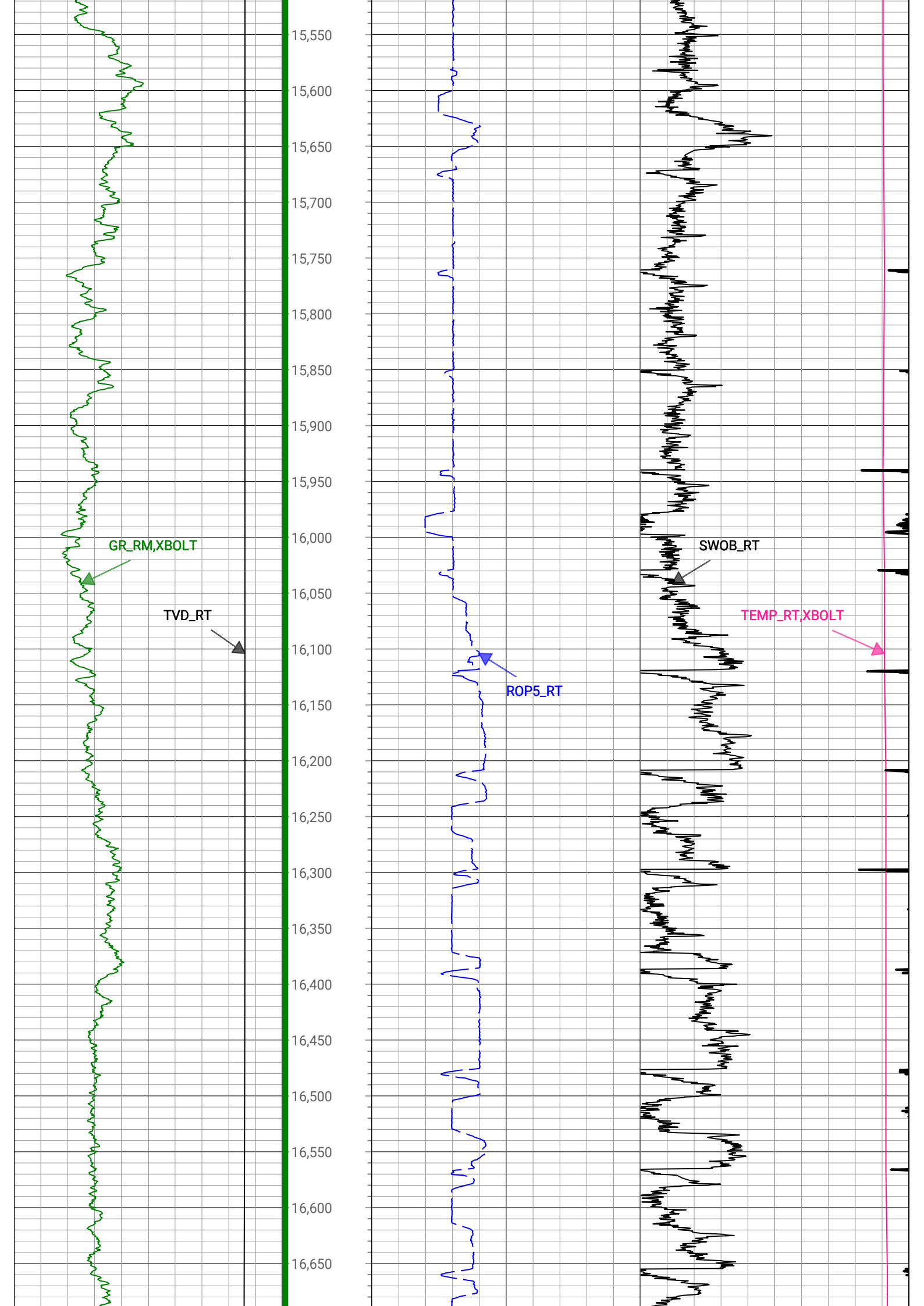


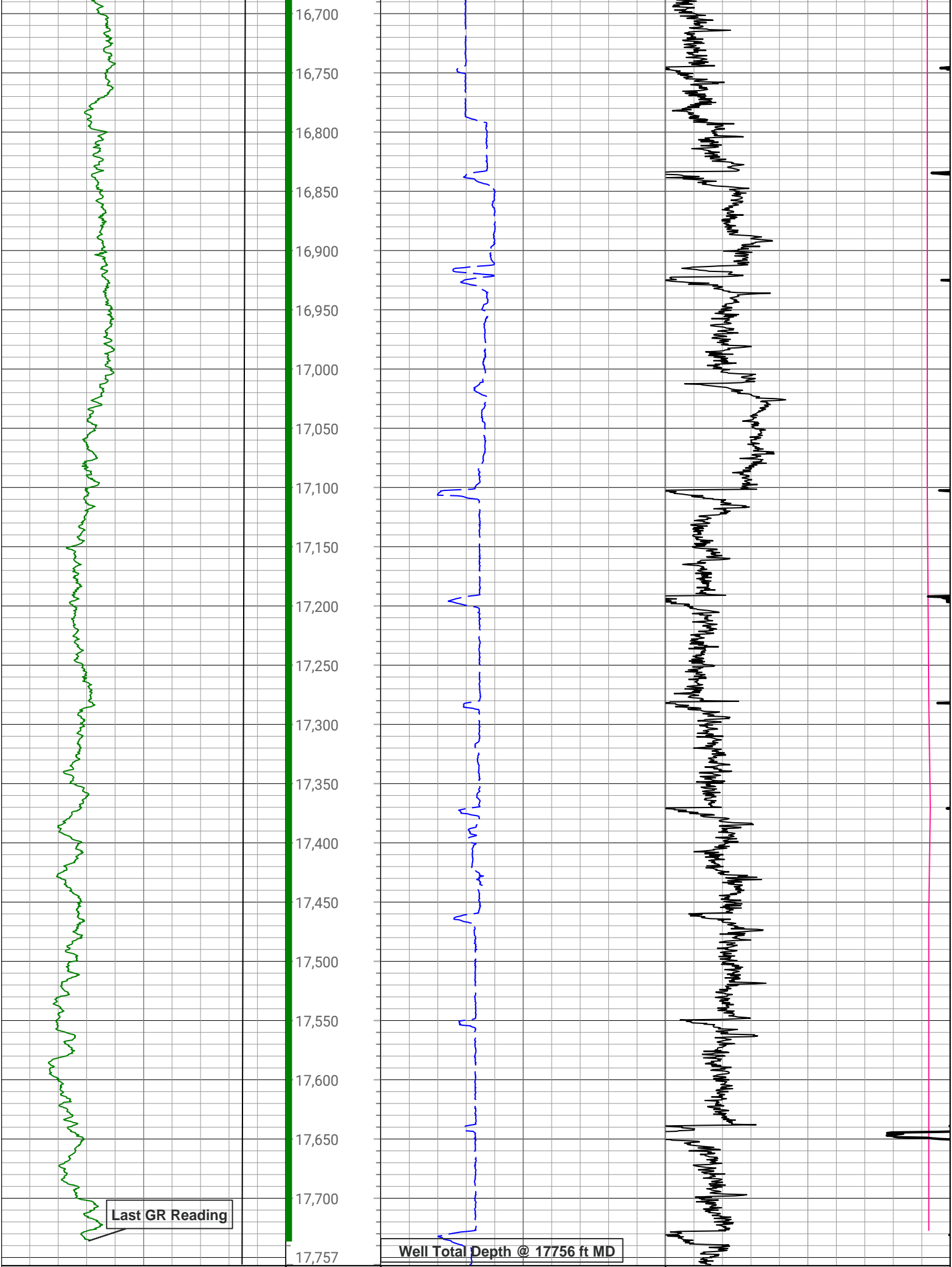












1,500	TVD_RT	7,500	Depth (ft)	0	ROP5_RT	1,000	0	TEMP_RT, XBOLT	300
ft, Borehole				ft/h, Borehole		degF, Borehole			
0	GR_RM, XBOLT	300				0	SWOB_RT	50	
gAPI, Borehole					1000 lbf, Borehole				

# Survey Record

## Survey Calculation

North Reference: True North

## Tie In Point

Measured Depth: 0(ft)      Inclination: 0(deg)      Azimuth: 0(deg)

True Vertical Depth: 0(ft)      North Displacement: 0(ft)      East Displacement: 0(ft)

## D&I Inits - Run - 1

Geomagnetic Model: HDGM 2022      Geomagnetic Date: 03-Sep-2022 00:00:00

Location B: 51798(nT)      Location G: 999.047(mgn)

Magnetic Dip: 66.7(deg)      Magnetic Dec: 7.749(deg)

Total Correction: 7.749

## D&I Inits - Run - 2

Geomagnetic Model: HDGM 2022      Geomagnetic Date: 01-Sep-2022 18:00:00

Location B: 51798(nT)      Location G: 999.047(mgn)

Magnetic Dip: 66.7(deg)      Magnetic Dec: 7.749(deg)

Total Correction: 7.749

MD(ft)	Incl(deg)	Azim(deg)	TVD(ft)	V Sec(ft)	N/-S(ft)	E/-W(ft)	DLS (deg/100ft)	Closure Distance (ft)	Closure Azimuth (deg)	Tool Type
0	0	0	0	0.00	0	0	0.00			TIP
159	0.3	205.8	159	-0.16	-0.37	-0.18	0.19	0.42	205.8	MWD
251	0.1	173.3	251	-0.24	-0.67	-0.28	0.24	0.73	202.39	MWD
343	0.4	241.2	343	-0.5	-0.91	-0.55	0.41	1.06	211.21	MWD
431	0.6	250	430.99	-1.18	-1.21	-1.25	0.24	1.74	225.92	MWD
521	2.5	261.7	520.96	-3.53	-1.66	-3.64	2.13	4	245.52	MWD
610	4.4	258.4	609.79	-8.73	-2.62	-8.9	2.15	9.28	253.58	MWD
700	5.8	257.9	699.43	-16.45	-4.27	-16.73	1.56	17.27	255.68	MWD
789	8.4	264.2	787.74	-27.21	-5.87	-27.6	3.05	28.21	257.99	MWD
879	10.8	261.4	876.48	-41.95	-7.8	-42.48	2.72	43.19	259.6	MWD
968	11.4	258.9	963.81	-58.63	-10.74	-59.35	0.86	60.32	259.75	MWD
1058	11.3	259.8	1052.05	-75.82	-14.01	-76.76	0.23	78.03	259.66	MWD
1147	13.2	261.6	1139.02	-94.24	-17.04	-95.4	2.18	96.91	259.87	MWD
1236	16.1	261.6	1225.12	-116.28	-20.33	-117.66	3.26	119.4	260.2	MWD
1326	17.5	260.7	1311.28	-141.71	-24.34	-143.36	1.58	145.41	260.37	MWD
1415	20	258	1395.55	-169.45	-29.66	-171.46	2.97	174.01	260.18	MWD
1506	22	258.4	1480.5	-200.93	-36.33	-203.38	2.2	206.6	259.87	MWD
1593	23.7	258.2	1560.67	-233.55	-43.18	-236.46	1.96	240.37	259.65	MWD
1663	23.4	258.6	1624.84	-260.58	-48.8	-263.86	0.49	268.33	259.52	MWD
1785	23.11	256.34	1736.93	-306.91	-59.25	-310.87	0.77	316.47	259.21	Manual
1874	23.02	255.58	1818.82	-340.18	-67.71	-344.7	0.35	351.28	258.89	Manual
1963	25.12	255.4	1900.07	-374.73	-76.8	-379.84	2.36	387.52	258.57	Manual
2052	26.82	254.1	1980.08	-411.67	-87.07	-417.43	2.01	426.41	258.22	Manual
2141	25.67	255.77	2059.91	-449.01	-97.31	-455.43	1.54	465.71	257.94	Manual
2231	27	259.4	2140.57	-487.42	-105.86	-494.41	2.32	505.61	257.92	Manual
2321	26.32	259.55	2221	-526.63	-113.23	-534.11	0.76	545.98	258.03	Manual
2410	26.36	261.03	2300.76	-565.1	-119.89	-573.03	0.74	585.44	258.18	Manual
2499	27.1	260.88	2380.25	-604.2	-126.19	-612.56	0.83	625.43	258.36	Manual

2589	27.12	261.47	2460.36	-644.29	-132.48	-653.09	0.3	666.39	258.53	Manual
2678	26.95	260.42	2539.64	-683.8	-138.84	-693.04	0.57	706.81	258.67	Manual
2768	26.79	259.02	2619.92	-723.34	-146.1	-733.06	0.73	747.48	258.73	Manual
2856	26.88	260.21	2698.45	-761.93	-153.26	-772.13	0.62	787.2	258.77	Manual
2946	26.54	260.88	2778.84	-801.38	-159.91	-812.04	0.5	827.63	258.86	Manual
3035	26.36	260.3	2858.53	-840.04	-166.39	-851.14	0.35	867.26	258.94	Manual
3124	26.89	260.74	2938.09	-878.93	-172.96	-890.48	0.64	907.13	259.01	Manual
3213	27.12	261.44	3017.39	-918.43	-179.21	-930.41	0.44	947.51	259.1	Manual
3302	25.8	258.93	3097.06	-957.04	-185.95	-969.48	1.94	987.15	259.14	Manual
3392	26.37	262.33	3177.9	-995.63	-192.38	-1008.51	1.78	1026.7	259.2	Manual
3481	26.73	261.79	3257.52	-1034.65	-197.88	-1047.91	0.49	1066.43	259.31	Manual
3570	27.84	262.09	3336.61	-1074.64	-203.6	-1088.31	1.26	1107.19	259.4	Manual
3659	27.56	260.33	3415.41	-1115.09	-209.91	-1129.19	0.97	1148.53	259.47	Manual
3748	26.88	260.29	3494.56	-1154.75	-216.77	-1169.31	0.76	1189.24	259.5	Manual
3838	26.59	260.06	3574.93	-1194.17	-223.67	-1209.21	0.34	1229.72	259.52	Manual
3927	27.38	260.17	3654.24	-1233.49	-230.61	-1248.99	0.89	1270.1	259.54	Manual
4017	26.43	259.25	3734.5	-1273.07	-237.88	-1289.06	1.15	1310.83	259.54	Manual
4106	27.79	261.17	3813.72	-1312.57	-244.76	-1329.03	1.82	1351.38	259.57	Manual
4196	26.61	260.24	3893.77	-1352.71	-251.39	-1369.63	1.39	1392.51	259.6	Manual
4286	27.21	260.9	3974.02	-1392.44	-258.07	-1409.81	0.74	1433.23	259.63	Manual
4375	26.38	258.19	4053.47	-1431.4	-265.33	-1449.26	1.66	1473.34	259.63	Manual
4464	24.92	257.36	4133.7	-1468.51	-273.48	-1486.91	1.69	1511.85	259.58	Manual
4553	26.12	261.5	4214.02	-1505.72	-280.48	-1524.58	2.41	1550.17	259.58	Manual
4643	25.98	259.35	4294.88	-1544.24	-287.05	-1563.55	1.06	1589.68	259.6	Manual
4732	25.87	260.14	4374.92	-1582.06	-293.98	-1601.84	0.41	1628.59	259.6	Manual
4822	26.08	260.01	4455.83	-1620.43	-300.77	-1640.67	0.24	1668.01	259.61	Manual
4911	27.33	260.97	4535.34	-1659.42	-307.37	-1680.11	1.49	1708	259.63	Manual
5001	25.66	260.32	4615.88	-1698.59	-313.89	-1719.73	1.88	1748.14	259.66	Manual
5090	25.54	258.84	4696.15	-1735.94	-320.85	-1757.55	0.73	1786.59	259.65	Manual
5179	26.65	258.81	4776.07	-1773.84	-328.43	-1795.95	1.25	1825.74	259.64	Manual
5269	26.31	258.72	4856.63	-1812.68	-336.25	-1835.31	0.38	1865.86	259.62	Manual
5359	26.93	258.55	4937.09	-1851.69	-344.2	-1874.85	0.69	1906.18	259.6	Manual
5448	26.33	258.72	5016.65	-1890.28	-352.06	-1913.96	0.68	1946.07	259.58	Manual
5538	27.44	260.66	5096.92	-1929.82	-359.33	-1954	1.57	1986.76	259.58	Manual
5628	26.24	260.49	5177.22	-1969.46	-365.99	-1994.08	1.34	2027.39	259.6	Manual
5717	27.1	258.78	5256.76	-2008.26	-373.18	-2033.37	1.3	2067.33	259.6	Manual
5807	27.81	258.73	5336.62	-2048.42	-381.27	-2074.07	0.79	2108.82	259.58	Manual
5896	27.41	258.79	5415.48	-2088.34	-389.31	-2114.53	0.45	2150.07	259.57	Manual
5985	26.71	261.37	5494.74	-2127.74	-396.3	-2154.4	1.54	2190.54	259.58	Manual
6075	26.75	260.28	5575.13	-2167.26	-402.75	-2194.36	0.55	2231.01	259.6	Manual
6164	26.16	256.41	5654.81	-2205.54	-410.74	-2233.17	2.05	2270.63	259.58	Manual
6253	18.37	241.79	5737.17	-2236.34	-422.01	-2264.67	10.68	2303.66	259.44	Manual
6344	10.87	221.95	5825.22	-2253.95	-435.19	-2283.08	9.8	2324.19	259.21	Manual
6433	4.62	198.72	5913.38	-2260.15	-444.84	-2289.85	7.72	2332.66	259.01	Manual
6522	12.4	157.67	6001.39	-2256.95	-457.1	-2287.37	10.57	2332.59	258.7	Manual
6611	17.79	130.46	6087.4	-2241.95	-474.8	-2273.36	9.85	2322.42	258.2	Manual
6701	19.58	106.48	6172.78	-2216.26	-488.02	-2248.4	8.7	2300.76	257.75	Manual
6790	26.03	108.26	6254.78	-2182.83	-498.38	-2215.52	7.29	2270.89	257.32	Manual
6879	33.55	98.78	6332	-2139.39	-508.27	-2172.59	9.95	2231.25	256.83	Manual
6969	43.04	92.1	6402.59	-2083.78	-513.21	-2117.16	11.49	2178.48	256.37	Manual

7058	53.34	90.08	6461.84	-2017.59	-514.37	-2050.93	11.69	2114.45	255.92	Manual
7148	57.24	90.96	6513.08	-1943.71	-515.06	-1976.97	4.41	2042.96	255.4	Manual
7237	62.41	91.58	6557.8	-1866.85	-516.77	-1900.07	5.84	1969.1	254.78	Manual
7327	69.4	91.15	6594.52	-1784.79	-518.72	-1817.99	7.78	1890.55	254.08	Manual
7416	77.29	88.33	6620.02	-1699.77	-518.29	-1732.8	9.37	1808.65	253.35	Manual
7506	82.82	89.96	6635.55	-1611.4	-516.98	-1644.2	6.4	1723.56	252.55	Manual
7595	89.25	90.84	6641.7	-1522.77	-517.6	-1555.46	7.29	1639.32	251.59	Manual
7685	89.14	90.54	6642.97	-1432.88	-518.69	-1465.48	0.36	1554.56	250.51	Manual
7774	89.16	89.98	6644.29	-1344.01	-519.09	-1376.49	0.63	1471.12	249.34	Manual
7863	89.8	89.99	6645.1	-1255.17	-519.07	-1287.5	0.72	1388.19	248.04	Manual
7952	89.72	90.72	6645.47	-1166.29	-519.62	-1198.5	0.83	1306.29	246.56	Manual
8041	89.52	89.96	6646.06	-1077.42	-520.15	-1109.5	0.88	1225.38	244.88	Manual
8131	90.05	88.79	6646.4	-987.63	-519.17	-1019.51	1.43	1144.09	243.01	Manual
8220	89.35	89.77	6646.86	-898.86	-518.05	-930.52	1.35	1065.01	240.89	Manual
8309	89.61	89.02	6647.67	-810.07	-517.11	-841.53	0.89	987.71	238.43	Manual
8399	90.5	89.25	6647.58	-720.31	-515.75	-751.54	1.02	911.49	235.54	Manual
8488	90.14	88.55	6647.09	-631.58	-514.04	-662.56	0.88	838.58	232.19	Manual
8577	90.48	88.49	6646.61	-542.9	-511.74	-573.59	0.39	768.69	228.26	Manual
8667	89.95	90.23	6646.27	-453.12	-510.74	-483.6	2.02	703.36	223.44	Manual
8756	90.34	90.03	6646.04	-364.26	-510.94	-394.6	0.49	645.58	217.68	Manual
8845	90.36	89.3	6645.5	-275.44	-510.42	-305.61	0.82	594.91	210.91	Manual
8935	90.71	89.16	6644.66	-185.68	-509.21	-215.62	0.42	552.98	202.95	Manual
9024	90	89.76	6644.11	-96.88	-508.37	-126.62	1.04	523.9	193.99	Manual
9113	90.61	89.85	6643.63	-8.05	-508.07	-37.63	0.69	509.46	184.24	Manual
9202	90.76	90	6642.57	80.79	-507.95	51.37	0.24	510.54	174.23	Manual
9291	90.02	89.35	6641.96	169.6	-507.45	140.36	1.11	526.5	164.54	Manual
9381	90.9	89.62	6641.24	259.39	-506.64	230.36	1.02	556.55	155.55	Manual
9471	90.39	90.26	6640.23	349.23	-506.54	320.35	0.91	599.34	147.69	Manual
9561	90.53	90.19	6639.51	439.1	-506.9	410.34	0.17	652.17	141.01	Manual
9651	89.62	90.1	6639.39	528.96	-507.12	500.34	1.02	712.4	135.39	Manual
9740	88.81	89.84	6640.61	617.79	-507.08	589.33	0.96	777.46	130.71	Manual
9829	89.07	90.38	6642.25	706.64	-507.25	678.32	0.67	847	126.79	Manual
9918	89.03	89.66	6643.73	795.48	-507.28	767.31	0.81	919.83	123.47	Manual
10008	89	88.74	6645.28	885.23	-506.02	857.28	1.02	995.49	120.55	Manual
10098	89.46	89.33	6646.49	974.97	-504.51	947.26	0.83	1073.23	118.04	Manual
10187	91.89	88.62	6645.44	1063.7	-502.92	1036.23	2.84	1151.83	115.89	Manual
10276	91.64	89.64	6642.7	1152.41	-501.56	1125.18	1.18	1231.91	114.03	Manual
10365	92.13	90.1	6639.77	1241.2	-501.36	1214.13	0.75	1313.57	112.44	Manual
10454	92.24	88.76	6636.38	1329.93	-500.48	1303.06	1.51	1395.87	111.01	Manual
10544	92.11	90.23	6632.96	1419.66	-499.69	1392.99	1.64	1479.9	109.73	Manual
10633	91.86	89.66	6629.88	1508.45	-499.6	1481.94	0.7	1563.88	108.63	Manual
10722	92.21	89.96	6626.72	1597.23	-499.3	1570.88	0.52	1648.32	107.63	Manual
10812	92.48	88.81	6623.03	1686.94	-498.34	1660.8	1.31	1733.95	106.7	Manual
10901	92.83	88.66	6618.91	1775.56	-496.38	1749.68	0.43	1818.73	105.84	Manual
10991	92.48	89.67	6614.74	1865.22	-495.07	1839.57	1.19	1905.02	105.06	Manual
11080	92.54	89.58	6610.84	1953.95	-494.49	1928.48	0.12	1990.87	104.38	Manual
11169	92.37	89.75	6607.03	2042.69	-493.97	2017.4	0.27	2076.99	103.76	Manual
11258	92.65	89.94	6603.13	2131.44	-493.72	2106.31	0.38	2163.41	103.19	Manual
11348	92.85	91.2	6598.82	2221.23	-494.62	2196.2	1.42	2251.21	102.69	Manual
11437	91.87	91.04	6595.15	2310.08	-496.26	2285.11	1.12	2338.4	102.26	Manual



15911	90.12	89.99	6661.68	6774.75	-493.75	6757.48	0.21	6775.5	94.18	Manual
16001	89.89	90.13	6661.68	6864.61	-493.84	6847.48	0.3	6865.27	94.13	Manual
16090	90.2	88.97	6661.61	6953.41	-493.14	6936.48	1.35	6953.99	94.07	Manual
16179	90.06	89.26	6661.4	7042.17	-491.77	7025.47	0.36	7042.66	94	Manual
16269	90.2	89.54	6661.2	7131.96	-490.83	7115.46	0.35	7132.37	93.95	Manual
16358	91.02	89.44	6660.25	7220.75	-490.04	7204.45	0.93	7221.1	93.89	Manual
16448	92.69	90.42	6657.34	7310.54	-489.93	7294.4	2.15	7310.83	93.84	Manual
16537	93.56	90.02	6652.49	7399.28	-490.27	7383.27	1.08	7399.53	93.8	Manual
16626	93.69	89.57	6646.86	7487.93	-489.95	7472.09	0.53	7488.13	93.75	Manual
16715	93.8	89.47	6641.05	7576.54	-489.2	7560.89	0.17	7576.7	93.7	Manual
16805	93.73	90.47	6635.14	7666.19	-489.16	7650.7	1.11	7666.32	93.66	Manual
16894	93.28	91.67	6629.7	7754.96	-490.82	7739.51	1.44	7755.06	93.63	Manual
16984	93.75	91.05	6624.18	7844.73	-492.95	7829.32	0.86	7844.82	93.6	Manual
17073	93.65	90.91	6618.44	7933.47	-494.47	7918.12	0.19	7933.55	93.57	Manual
17252	93.57	91.84	6607.16	8112.01	-498.75	8096.71	0.52	8112.06	93.52	Manual
17342	93.66	91.84	6601.49	8201.8	-501.64	8186.49	0.1	8201.84	93.51	Manual
17432	93.56	91.06	6595.82	8291.58	-503.91	8276.28	0.87	8291.61	93.48	Manual
17522	93.36	91.79	6590.39	8381.36	-506.15	8366.09	0.84	8381.38	93.46	Manual
17611	93.82	91.15	6584.82	8470.14	-508.42	8454.88	0.88	8470.15	93.44	Manual
17701	93.62	91.84	6578.98	8559.9	-510.77	8544.66	0.8	8559.91	93.42	Manual
17756	93.62	91.84	6575.51	8614.77	-512.53	8599.52	0	8614.78	93.41	Manual

Company: PDC Energy Inc  
Well: Schrute 4N  
Field Name: Wattenberg  
Country Name: United States  
State Name: Colorado  
County Name: Weld

**Schlumberger**

Xbolt GAMMA RAY  
1in/100ft Measured Depth  
Final Print  
Recorded Mode