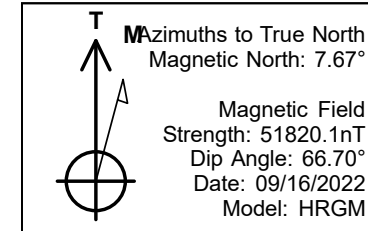


PDC Energy Inc. DJ Basin



Schrute 1NR
 Schrute 5N64W16 1-10 Pad Sec.16-T5N-R64W
 North American Datum 1983 , US State Plane 1983, Colorado Northern Zone
 Ground Elevation: 4613.0
 +N/-S +E/-W Northing Easting Longitude Slot
 0.0 0.0 1389332.02 3262254.77 40.398296 -104.558372
 Ensign 142 - RKB 28' WELL @ 4641.0ft (Ensign 142 - RKB 28')

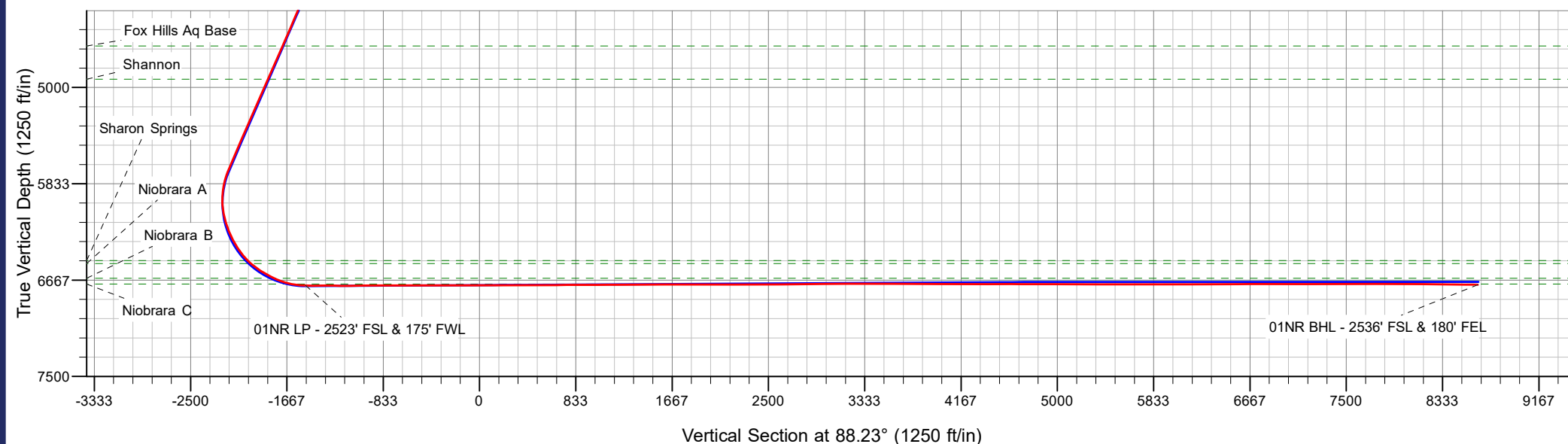
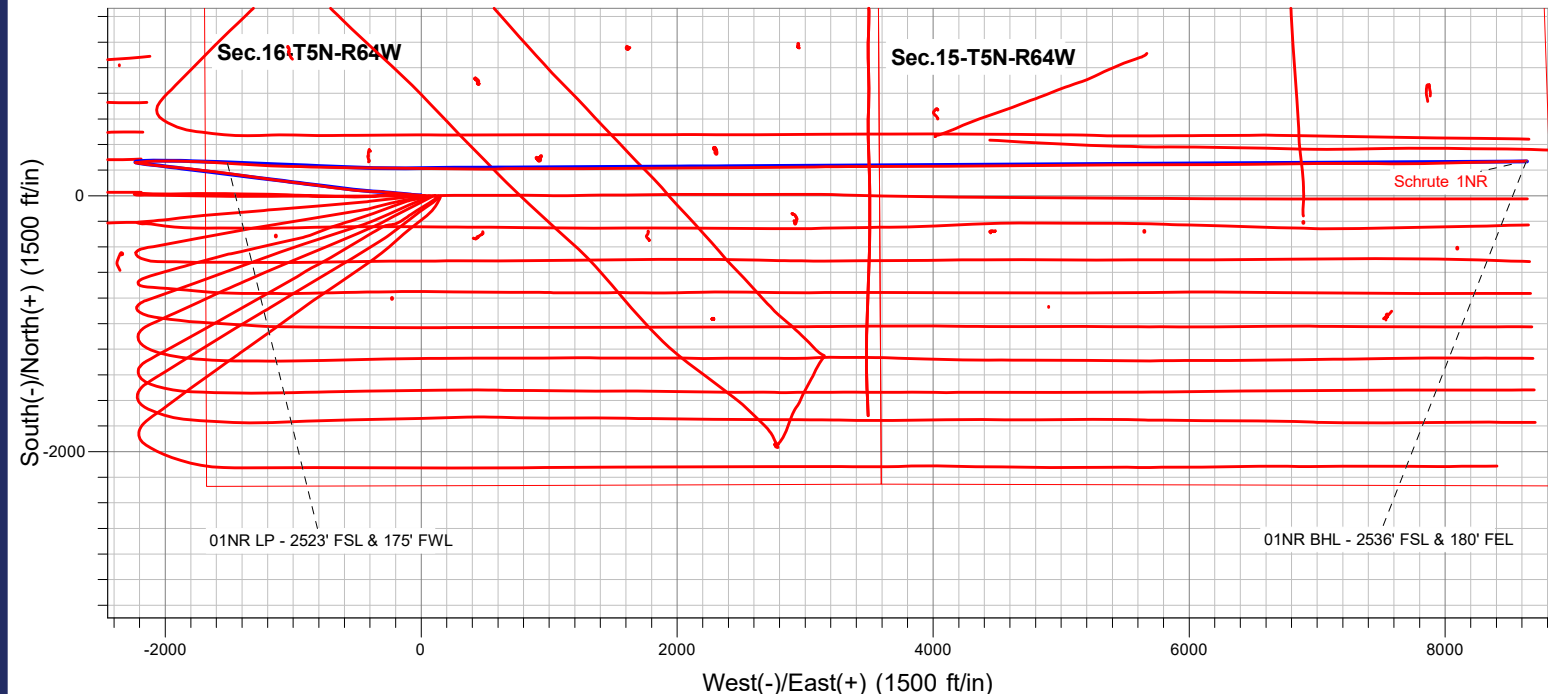
Schrute 5N64W16 1-10 Pad Sec.16-T5N-R64W
 Schrute 1NR
 1NR Final Surveys
 17:11, September 20 2022



ANNOTATIONS

MD	TVD	Annotation
7568.9	6713.6	01NR LP - 2523' FSL & 175' FWL
17717.0	6706.6	01NR BHL - 2536' FSL & 180' FEL

FINAL SURVEY
Projected Bottom Hole Location
17717' MD / 6706.6' TVD
89.20° INC / 88.25° AZM
2536' FSL / 180' FEL





PDC Energy Inc. DJ Basin

SEC.16-T5N-R64W

Schrute 5N64W16 1-10 Pad Sec.16-T5N-R64W

Schrute 1NR

Schrute 1NR Wellbore #2

Design: 1NR Final Surveys

Standard Survey Report

20 September, 2022



Company:	PDC Energy Inc. DJ Basin	Local Co-ordinate Reference:	Well Schrute 1NR
Project:	SEC.16-T5N-R64W	TVD Reference:	WELL @ 4641.0ft (Ensign 142 - RKB 28')
Site:	Schrute 5N64W16 1-10 Pad Sec.16-T5N-R64W	MD Reference:	WELL @ 4641.0ft (Ensign 142 - RKB 28')
Well:	Schrute 1NR	North Reference:	True
Wellbore:	Schrute 1NR Wellbore #2	Survey Calculation Method:	Minimum Curvature
Design:	1NR Final Surveys	Database:	US_EDM

Project	SEC.16-T5N-R64W, Weld County, CO		
Map System:	US State Plane 1983	System Datum:	Mean Sea Level
Geo Datum:	North American Datum 1983		
Map Zone:	Colorado Northern Zone		Using geodetic scale factor

Site	Schrute 5N64W16 1-10 Pad Sec.16-T5N-R64W				
Site Position:		Northing:	1,389,329.90 usft	Latitude:	40.398290
From:	Lat/Long	Easting:	3,262,269.80 usft	Longitude:	-104.558319
Position Uncertainty:	0.0 ft	Slot Radius:	13-3/16 "	Grid Convergence:	0.61 °

Well	Schrute 1NR					
Well Position	+N/-S	0.0 ft	Northing:	1,389,332.02 usft	Latitude:	40.398296
	+E/-W	0.0 ft	Easting:	3,262,254.77 usft	Longitude:	-104.558372
Position Uncertainty		0.0 ft	Wellhead Elevation:	0.0 ft	Ground Level:	4,613.0 ft

Wellbore	Schrute 1NR Wellbore #2				
Magnetics	Model Name	Sample Date	Declination (°)	Dip Angle (°)	Field Strength (nT)
	HRGM	09/16/2022	7.67	66.70	51,820.11357439

Design	1NR Final Surveys				
Audit Notes:					
Version:	1.0	Phase:	ACTUAL	Tie On Depth:	0.0
Vertical Section:	Depth From (TVD) (ft)	+N/-S (ft)	+E/-W (ft)	Direction (°)	
	0.0	0.0	0.0	88.23	

Survey Program	Date	09/20/2022			
From (ft)	To (ft)	Survey (Wellbore)	Tool Name	Description	
162.0	17,717.0	1N_As Drilled (Schrute 1NR Wellbore #2)	MWD	MWD - Standard	

Measured Depth (ft)	Inclination (°)	Azimuth (°)	Vertical Depth (ft)	+N/-S (ft)	+E/-W (ft)	Vertical Section (ft)	Dogleg Rate (°/100usft)	Build Rate (°/100usft)	Turn Rate (°/100usft)
0.0	0.00	0.00	0.0	0.0	0.0	0.0	0.00	0.00	0.00
162.0	0.20	247.50	162.0	-0.1	-0.3	-0.3	0.12	0.12	0.00
253.0	1.40	293.00	253.0	0.3	-1.4	-1.4	1.39	1.32	50.00
345.0	3.70	278.40	344.9	1.1	-5.4	-5.4	2.58	2.50	-15.87
434.0	5.30	280.40	433.6	2.3	-12.3	-12.2	1.81	1.80	2.25
523.0	7.70	274.20	522.0	3.5	-22.3	-22.2	2.81	2.70	-6.97
613.0	9.60	273.70	611.0	4.4	-35.8	-35.6	2.11	2.11	-0.56
702.0	12.00	272.80	698.4	5.3	-52.4	-52.2	2.70	2.70	-1.01
792.0	14.00	275.40	786.1	6.8	-72.6	-72.4	2.31	2.22	2.89
881.0	15.20	277.60	872.2	9.4	-94.9	-94.6	1.49	1.35	2.47

Company:	PDC Energy Inc. DJ Basin	Local Co-ordinate Reference:	Well Schrute 1NR
Project:	SEC.16-T5N-R64W	TVD Reference:	WELL @ 4641.0ft (Ensign 142 - RKB 28')
Site:	Schrute 5N64W16 1-10 Pad Sec.16-T5N-R64W	MD Reference:	WELL @ 4641.0ft (Ensign 142 - RKB 28')
Well:	Schrute 1NR	North Reference:	True
Wellbore:	Schrute 1NR Wellbore #2	Survey Calculation Method:	Minimum Curvature
Design:	1NR Final Surveys	Database:	US_EDM

Survey										
Measured Depth (ft)	Inclination (°)	Azimuth (°)	Vertical Depth (ft)	+N/-S (ft)	+E/-W (ft)	Vertical Section (ft)	Dogleg Rate (°/100usft)	Build Rate (°/100usft)	Turn Rate (°/100usft)	
971.0	17.30	276.00	958.6	12.3	-119.9	-119.5	2.39	2.33	-1.78	
1,060.0	18.60	274.70	1,043.3	14.9	-147.2	-146.7	1.53	1.46	-1.46	
1,149.0	21.00	274.90	1,127.0	17.4	-177.3	-176.6	2.70	2.70	0.22	
1,238.0	22.30	274.70	1,209.8	20.2	-210.0	-209.2	1.46	1.46	-0.22	
1,328.0	24.00	275.40	1,292.5	23.3	-245.2	-244.4	1.91	1.89	0.78	
1,417.0	24.40	276.10	1,373.7	26.9	-281.5	-280.5	0.55	0.45	0.79	
1,506.0	23.50	273.70	1,455.0	30.0	-317.5	-316.4	1.49	-1.01	-2.70	
1,596.0	22.20	273.00	1,538.0	32.1	-352.4	-351.2	1.48	-1.44	-0.78	
1,651.0	22.20	274.70	1,588.9	33.5	-373.1	-371.9	1.17	0.00	3.09	
1,787.0	24.56	270.76	1,713.7	36.0	-427.0	-425.7	2.08	1.74	-2.90	
1,876.0	21.82	275.25	1,795.5	37.7	-462.0	-460.6	3.66	-3.08	5.04	
1,965.0	23.36	274.35	1,877.7	40.6	-496.0	-494.6	1.77	1.73	-1.01	
2,054.0	24.30	274.45	1,959.1	43.3	-531.9	-530.3	1.06	1.06	0.11	
2,143.0	23.21	277.05	2,040.6	46.9	-567.6	-565.8	1.70	-1.22	2.92	
2,233.0	23.70	277.98	2,123.1	51.6	-603.1	-601.2	0.68	0.54	1.03	
2,322.0	23.72	277.10	2,204.6	56.3	-638.5	-636.5	0.40	0.02	-0.99	
2,411.0	24.85	278.08	2,285.7	61.1	-674.8	-672.6	1.35	1.27	1.10	
2,501.0	23.84	278.47	2,367.7	66.5	-711.5	-709.1	1.14	-1.12	0.43	
2,590.0	24.53	278.83	2,448.9	71.9	-747.6	-745.0	0.79	0.78	0.40	
2,680.0	24.39	277.07	2,530.9	77.1	-784.5	-781.7	0.82	-0.16	-1.96	
2,769.0	25.35	278.01	2,611.6	82.0	-821.6	-818.7	1.17	1.08	1.06	
2,858.0	24.04	276.81	2,692.5	86.8	-858.5	-855.4	1.58	-1.47	-1.35	
2,948.0	23.41	276.26	2,774.9	90.9	-894.4	-891.2	0.74	-0.70	-0.61	
3,037.0	24.01	277.17	2,856.3	95.1	-930.0	-926.6	0.79	0.67	1.02	
3,126.0	24.19	277.58	2,937.6	99.8	-966.0	-962.5	0.28	0.20	0.46	
3,215.0	24.47	277.52	3,018.7	104.6	-1,002.4	-998.7	0.32	0.31	-0.07	
3,304.0	23.95	276.68	3,099.8	109.1	-1,038.6	-1,034.7	0.70	-0.58	-0.94	
3,393.0	23.86	277.23	3,181.2	113.5	-1,074.4	-1,070.4	0.27	-0.10	0.62	
3,483.0	22.57	277.03	3,263.9	117.9	-1,109.6	-1,105.4	1.44	-1.43	-0.22	
3,572.0	23.64	277.21	3,345.8	122.2	-1,144.2	-1,139.9	1.20	1.20	0.20	
3,661.0	23.80	278.01	3,427.3	127.0	-1,179.7	-1,175.2	0.40	0.18	0.90	
3,750.0	24.17	278.26	3,508.6	132.1	-1,215.5	-1,210.9	0.43	0.42	0.28	
3,751.6	24.17	278.29	3,510.0	132.2	-1,216.2	-1,211.5	0.74	-0.03	1.81	
Parkman										
3,839.0	24.15	279.87	3,589.8	137.8	-1,251.5	-1,246.6	0.74	-0.02	1.81	
3,929.0	23.42	277.61	3,672.1	143.4	-1,287.4	-1,282.3	1.30	-0.81	-2.51	
4,018.0	23.96	277.90	3,753.6	148.2	-1,322.8	-1,317.6	0.62	0.61	0.33	
4,108.0	24.71	278.62	3,835.6	153.5	-1,359.5	-1,354.1	0.90	0.83	0.80	
4,198.0	23.27	276.77	3,917.9	158.4	-1,395.8	-1,390.2	1.80	-1.60	-2.06	
4,236.3	23.66	277.08	3,953.0	160.3	-1,410.9	-1,405.3	1.06	1.01	0.80	
Sussex										
4,287.0	24.17	277.47	3,999.4	162.9	-1,431.3	-1,425.6	1.06	1.01	0.77	
4,376.0	23.92	276.90	4,080.6	167.4	-1,467.3	-1,461.4	0.38	-0.28	-0.64	
4,466.0	23.68	277.10	4,163.0	171.8	-1,503.3	-1,497.3	0.28	-0.27	0.22	

Company:	PDC Energy Inc. DJ Basin	Local Co-ordinate Reference:	Well Schrute 1NR
Project:	SEC.16-T5N-R64W	TVD Reference:	WELL @ 4641.0ft (Ensign 142 - RKB 28')
Site:	Schrute 5N64W16 1-10 Pad Sec.16-T5N-R64W	MD Reference:	WELL @ 4641.0ft (Ensign 142 - RKB 28')
Well:	Schrute 1NR	North Reference:	True
Wellbore:	Schrute 1NR Wellbore #2	Survey Calculation Method:	Minimum Curvature
Design:	1NR Final Surveys	Database:	US_EDM

Survey									
Measured Depth (ft)	Inclination (°)	Azimuth (°)	Vertical Depth (ft)	+N/-S (ft)	+E/-W (ft)	Vertical Section (ft)	Dogleg Rate (°/100usft)	Build Rate (°/100usft)	Turn Rate (°/100usft)
4,555.0	23.40	277.46	4,244.6	176.3	-1,538.6	-1,532.4	0.35	-0.31	0.40
4,644.0	23.88	277.62	4,326.1	181.0	-1,574.0	-1,567.6	0.54	0.54	0.18
4,734.0	23.10	276.54	4,408.6	185.4	-1,609.6	-1,603.0	0.99	-0.87	-1.20
4,823.0	24.09	277.86	4,490.2	189.9	-1,644.9	-1,638.2	1.26	1.11	1.48
4,912.0	23.61	276.71	4,571.6	194.5	-1,680.6	-1,673.8	0.75	-0.54	-1.29
4,987.8	23.80	276.72	4,641.0	198.0	-1,710.9	-1,703.9	0.26	0.26	0.01
Fox Hills Aq Base									
5,002.0	23.84	276.72	4,654.0	198.7	-1,716.5	-1,709.6	0.26	0.26	0.01
5,091.0	23.94	275.73	4,735.4	202.6	-1,752.4	-1,745.3	0.46	0.11	-1.11
5,181.0	24.65	277.24	4,817.4	206.8	-1,789.2	-1,781.9	1.05	0.79	1.68
5,271.0	23.06	274.38	4,899.7	210.5	-1,825.4	-1,818.0	2.18	-1.77	-3.18
5,301.8	23.59	275.66	4,928.0	211.6	-1,837.5	-1,830.1	2.39	1.73	4.16
Shannon									
5,360.0	24.63	277.94	4,981.1	214.4	-1,861.1	-1,853.6	2.39	1.78	3.91
5,450.0	24.32	276.69	5,063.0	219.2	-1,898.1	-1,890.4	0.67	-0.34	-1.39
5,540.0	23.66	274.69	5,145.3	222.8	-1,934.5	-1,926.7	1.16	-0.73	-2.22
5,629.0	23.34	274.56	5,226.9	225.7	-1,969.9	-1,962.0	0.36	-0.36	-0.15
5,719.0	24.20	275.06	5,309.2	228.7	-2,006.0	-1,998.0	0.98	0.96	0.56
5,809.0	23.79	276.31	5,391.5	232.3	-2,042.4	-2,034.3	0.73	-0.46	1.39
5,897.0	23.62	277.60	5,472.0	236.6	-2,077.6	-2,069.2	0.62	-0.19	1.47
5,987.0	22.64	277.00	5,554.8	241.1	-2,112.6	-2,104.2	1.12	-1.09	-0.67
6,076.0	23.87	278.22	5,636.6	245.8	-2,147.4	-2,138.8	1.48	1.38	1.37
6,166.0	23.35	278.18	5,719.0	250.9	-2,183.1	-2,174.3	0.58	-0.58	-0.04
6,255.0	15.23	277.62	5,803.0	255.0	-2,212.2	-2,203.3	9.13	-9.12	-0.63
6,345.0	6.47	277.20	5,891.3	257.2	-2,229.0	-2,220.0	9.73	-9.73	-0.47
6,435.0	0.06	248.35	5,981.1	257.8	-2,234.1	-2,225.0	7.13	-7.12	-32.06
6,524.0	9.23	85.31	6,069.7	258.4	-2,227.0	-2,217.9	10.44	10.30	-183.19
6,613.0	15.91	83.96	6,156.5	260.2	-2,207.7	-2,198.6	7.51	7.51	-1.52
6,702.0	22.03	84.10	6,240.6	263.2	-2,179.0	-2,169.8	6.88	6.88	0.16
6,792.0	27.61	83.69	6,322.3	267.3	-2,141.4	-2,132.1	6.20	6.20	-0.46
6,881.0	33.94	87.42	6,398.7	270.7	-2,096.0	-2,086.7	7.43	7.11	4.19
6,971.0	41.71	88.71	6,469.8	272.5	-2,040.9	-2,031.5	8.68	8.63	1.43
7,008.6	45.31	90.11	6,497.0	272.7	-2,015.1	-2,005.7	9.93	9.59	3.72
Sharon Springs									
7,046.8	48.99	91.36	6,523.0	272.4	-1,987.1	-1,977.7	9.93	9.63	3.28
Niobrara A									
7,060.0	50.27	91.76	6,531.6	272.1	-1,977.0	-1,967.6	9.93	9.65	3.03
7,149.0	56.67	91.97	6,584.5	269.8	-1,905.6	-1,896.3	7.19	7.19	0.24
7,239.0	63.25	90.77	6,629.5	267.9	-1,827.7	-1,818.5	7.40	7.31	-1.33
7,288.6	65.47	90.80	6,651.0	267.3	-1,783.0	-1,773.9	4.47	4.47	0.06
Niobrara B									
7,329.0	67.27	90.82	6,667.2	266.8	-1,746.0	-1,736.9	4.47	4.47	0.05
7,418.0	76.15	94.27	6,695.1	263.0	-1,661.7	-1,652.7	10.63	9.98	3.88
7,445.1	78.73	94.57	6,701.0	260.9	-1,635.3	-1,626.4	9.58	9.52	1.11

Company:	PDC Energy Inc. DJ Basin	Local Co-ordinate Reference:	Well Schrute 1NR
Project:	SEC.16-T5N-R64W	TVD Reference:	WELL @ 4641.0ft (Ensign 142 - RKB 28')
Site:	Schrute 5N64W16 1-10 Pad Sec.16-T5N-R64W	MD Reference:	WELL @ 4641.0ft (Ensign 142 - RKB 28')
Well:	Schrute 1NR	North Reference:	True
Wellbore:	Schrute 1NR Wellbore #2	Survey Calculation Method:	Minimum Curvature
Design:	1NR Final Surveys	Database:	US_EDM

Survey										
Measured Depth (ft)	Inclination (°)	Azimuth (°)	Vertical Depth (ft)	+N/-S (ft)	+E/-W (ft)	Vertical Section (ft)	Dogleg Rate (°/100usft)	Build Rate (°/100usft)	Turn Rate (°/100usft)	
Niobrara C										
7,508.0	84.72	95.25	6,710.0	255.6	-1,573.3	-1,564.7	9.58	9.52	1.08	
7,568.9	88.57	93.74	6,713.6	250.8	-1,512.7	-1,504.2	6.79	6.33	-2.47	
01NR LP - 2523' FSL & 175' FWL										
7,597.0	90.35	93.05	6,713.9	249.2	-1,484.7	-1,476.3	6.79	6.33	-2.47	
7,686.0	89.76	92.94	6,713.8	244.5	-1,395.8	-1,387.6	0.67	-0.66	-0.12	
7,775.0	89.04	92.79	6,714.7	240.1	-1,306.9	-1,298.9	0.83	-0.81	-0.17	
7,864.0	89.36	92.61	6,716.0	235.9	-1,218.0	-1,210.1	0.41	0.36	-0.20	
7,954.0	91.39	92.01	6,715.4	232.3	-1,128.1	-1,120.4	2.35	2.26	-0.67	
8,043.0	90.54	92.08	6,713.9	229.1	-1,039.2	-1,031.6	0.96	-0.96	0.08	
8,132.0	90.88	91.08	6,712.8	226.6	-950.2	-942.7	1.19	0.38	-1.12	
8,222.0	90.33	92.12	6,711.8	224.1	-860.3	-852.9	1.31	-0.61	1.16	
8,311.0	89.58	90.90	6,711.9	221.8	-771.3	-764.1	1.61	-0.84	-1.37	
8,401.0	90.43	90.04	6,711.9	221.0	-681.3	-674.1	1.34	0.94	-0.96	
8,490.0	89.45	92.44	6,712.0	219.1	-592.3	-585.3	2.91	-1.10	2.70	
8,579.0	89.95	90.67	6,712.4	216.7	-503.4	-496.4	2.07	0.56	-1.99	
8,669.0	90.40	89.80	6,712.2	216.3	-413.4	-406.5	1.09	0.50	-0.97	
8,758.0	90.08	90.34	6,711.8	216.2	-324.4	-317.5	0.71	-0.36	0.61	
8,847.0	89.51	90.55	6,712.1	215.5	-235.4	-228.6	0.68	-0.64	0.24	
8,937.0	89.88	91.46	6,712.6	213.9	-145.4	-138.7	1.09	0.41	1.01	
9,026.0	90.40	90.10	6,712.4	212.7	-56.4	-49.8	1.64	0.58	-1.53	
9,115.0	90.28	90.61	6,711.8	212.2	32.6	39.1	0.59	-0.13	0.57	
9,204.0	90.55	90.40	6,711.2	211.4	121.6	128.1	0.38	0.30	-0.24	
9,293.0	90.01	91.32	6,710.8	210.1	210.6	217.0	1.20	-0.61	1.03	
9,382.0	90.03	89.84	6,710.7	209.2	299.6	305.9	1.66	0.02	-1.66	
9,472.0	90.04	90.56	6,710.7	208.8	389.6	395.8	0.80	0.01	0.80	
9,562.0	90.09	90.45	6,710.6	208.1	479.6	485.8	0.13	0.06	-0.12	
9,652.0	90.82	89.06	6,709.9	208.4	569.6	575.7	1.74	0.81	-1.54	
9,742.0	90.36	88.88	6,708.9	210.1	659.5	665.7	0.55	-0.51	-0.20	
9,831.0	90.19	90.31	6,708.5	210.7	748.5	754.7	1.62	-0.19	1.61	
9,920.0	90.09	89.57	6,708.3	210.8	837.5	843.7	0.84	-0.11	-0.83	
10,009.0	89.98	89.86	6,708.2	211.2	926.5	932.6	0.35	-0.12	0.33	
10,099.0	90.38	90.11	6,708.0	211.2	1,016.5	1,022.6	0.52	0.44	0.28	
10,189.0	90.36	89.20	6,707.4	211.8	1,106.5	1,112.6	1.01	-0.02	-1.01	
10,278.0	90.19	90.95	6,706.9	211.7	1,195.5	1,201.5	1.98	-0.19	1.97	
10,367.0	90.32	89.97	6,706.5	211.0	1,284.5	1,290.4	1.11	0.15	-1.10	
10,456.0	90.18	90.43	6,706.2	210.6	1,373.5	1,379.4	0.54	-0.16	0.52	
10,545.0	90.92	88.74	6,705.3	211.3	1,462.5	1,468.3	2.07	0.83	-1.90	
10,635.0	89.87	89.79	6,704.7	212.4	1,552.5	1,558.3	1.65	-1.17	1.17	
10,724.0	90.18	90.03	6,704.6	212.6	1,641.5	1,647.3	0.44	0.35	0.27	
10,814.0	90.06	89.06	6,704.5	213.3	1,731.5	1,737.3	1.09	-0.13	-1.08	
10,903.0	89.97	89.05	6,704.4	214.8	1,820.5	1,826.3	0.10	-0.10	-0.01	
10,992.0	90.13	89.35	6,704.4	216.0	1,909.5	1,915.2	0.38	0.18	0.34	
11,081.0	90.22	90.35	6,704.1	216.2	1,998.5	2,004.2	1.13	0.10	1.12	

Company:	PDC Energy Inc. DJ Basin	Local Co-ordinate Reference:	Well Schrute 1NR
Project:	SEC.16-T5N-R64W	TVD Reference:	WELL @ 4641.0ft (Ensign 142 - RKB 28')
Site:	Schrute 5N64W16 1-10 Pad Sec.16-T5N-R64W	MD Reference:	WELL @ 4641.0ft (Ensign 142 - RKB 28')
Well:	Schrute 1NR	North Reference:	True
Wellbore:	Schrute 1NR Wellbore #2	Survey Calculation Method:	Minimum Curvature
Design:	1NR Final Surveys	Database:	US_EDM

Survey									
Measured Depth (ft)	Inclination (°)	Azimuth (°)	Vertical Depth (ft)	+N/-S (ft)	+E/-W (ft)	Vertical Section (ft)	Dogleg Rate (°/100usft)	Build Rate (°/100usft)	Turn Rate (°/100usft)
11,170.0	89.85	89.23	6,704.0	216.6	2,087.5	2,093.2	1.33	-0.42	-1.26
11,260.0	90.12	89.69	6,704.1	217.4	2,177.5	2,183.1	0.59	0.30	0.51
11,350.0	90.03	90.38	6,703.9	217.4	2,267.5	2,273.1	0.77	-0.10	0.77
11,439.0	90.00	89.90	6,703.9	217.1	2,356.5	2,362.1	0.54	-0.03	-0.54
11,529.0	90.09	88.91	6,703.8	218.1	2,446.5	2,452.0	1.10	0.10	-1.10
11,618.0	89.67	89.60	6,704.0	219.2	2,535.5	2,541.0	0.91	-0.47	0.78
11,708.0	90.69	89.06	6,703.7	220.3	2,625.4	2,631.0	1.28	1.13	-0.60
11,797.0	90.51	90.17	6,702.8	220.9	2,714.4	2,720.0	1.26	-0.20	1.25
11,887.0	90.55	89.05	6,702.0	221.5	2,804.4	2,809.9	1.25	0.04	-1.24
11,977.0	90.65	89.11	6,701.0	222.9	2,894.4	2,899.9	0.13	0.11	0.07
12,065.0	91.02	89.52	6,699.8	224.0	2,982.4	2,987.9	0.63	0.42	0.47
12,156.0	90.39	89.54	6,698.6	224.7	3,073.4	3,078.9	0.69	-0.69	0.02
12,245.0	90.43	89.38	6,698.0	225.6	3,162.4	3,167.8	0.19	0.04	-0.18
12,335.0	90.48	89.74	6,697.3	226.3	3,252.4	3,257.8	0.40	0.06	0.40
12,424.0	89.92	89.00	6,697.0	227.3	3,341.4	3,346.8	1.04	-0.63	-0.83
12,514.0	89.62	90.63	6,697.3	227.5	3,431.4	3,436.8	1.84	-0.33	1.81
12,603.0	89.62	89.49	6,697.9	227.5	3,520.4	3,525.7	1.28	0.00	-1.28
12,693.0	89.51	88.74	6,698.6	228.8	3,610.3	3,615.7	0.84	-0.12	-0.83
12,782.0	89.77	90.37	6,699.2	229.5	3,699.3	3,704.7	1.85	0.29	1.83
12,871.0	89.05	90.65	6,700.1	228.7	3,788.3	3,793.6	0.87	-0.81	0.31
12,961.0	89.80	89.40	6,701.0	228.7	3,878.3	3,883.5	1.62	0.83	-1.39
13,050.0	89.70	89.60	6,701.4	229.5	3,967.3	3,972.5	0.25	-0.11	0.22
13,140.0	90.29	89.67	6,701.4	230.1	4,057.3	4,062.5	0.66	0.66	0.08
13,229.0	90.16	89.08	6,701.0	231.0	4,146.3	4,151.5	0.68	-0.15	-0.66
13,319.0	90.11	89.96	6,700.8	231.8	4,236.3	4,241.4	0.98	-0.06	0.98
13,408.0	90.17	90.15	6,700.6	231.7	4,325.3	4,330.4	0.22	0.07	0.21
13,497.0	89.64	89.38	6,700.8	232.1	4,414.3	4,419.4	1.05	-0.60	-0.87
13,587.0	90.12	89.53	6,700.9	232.9	4,504.3	4,509.3	0.56	0.53	0.17
13,676.0	89.51	90.13	6,701.2	233.2	4,593.3	4,598.3	0.96	-0.69	0.67
13,766.0	89.73	88.74	6,701.8	234.1	4,683.3	4,688.3	1.56	0.24	-1.54
13,855.0	89.86	89.46	6,702.1	235.5	4,772.3	4,777.3	0.82	0.15	0.81
13,944.0	90.30	89.53	6,702.0	236.2	4,861.3	4,866.3	0.50	0.49	0.08
14,033.0	89.87	90.32	6,701.9	236.4	4,950.3	4,955.2	1.01	-0.48	0.89
14,123.0	89.75	90.03	6,702.2	236.1	5,040.3	5,045.2	0.35	-0.13	-0.32
14,212.0	90.02	89.34	6,702.4	236.6	5,129.3	5,134.1	0.83	0.30	-0.78
14,302.0	89.60	89.07	6,702.7	237.8	5,219.3	5,224.1	0.55	-0.47	-0.30
14,391.0	89.57	89.44	6,703.3	239.0	5,308.2	5,313.1	0.42	-0.03	0.42
14,481.0	89.91	89.15	6,703.7	240.1	5,398.2	5,403.1	0.50	0.38	-0.32
14,570.0	90.16	89.20	6,703.7	241.4	5,487.2	5,492.1	0.29	0.28	0.06
14,660.0	90.15	90.07	6,703.4	241.9	5,577.2	5,582.0	0.97	-0.01	0.97
14,750.0	90.28	90.17	6,703.1	241.8	5,667.2	5,672.0	0.18	0.14	0.11
14,840.0	90.48	89.55	6,702.5	242.0	5,757.2	5,762.0	0.72	0.22	-0.69
14,929.0	89.69	90.59	6,702.4	241.9	5,846.2	5,850.9	1.47	-0.89	1.17

Company:	PDC Energy Inc. DJ Basin	Local Co-ordinate Reference:	Well Schrute 1NR
Project:	SEC.16-T5N-R64W	TVD Reference:	WELL @ 4641.0ft (Ensign 142 - RKB 28')
Site:	Schrute 5N64W16 1-10 Pad Sec.16-T5N-R64W	MD Reference:	WELL @ 4641.0ft (Ensign 142 - RKB 28')
Well:	Schrute 1NR	North Reference:	True
Wellbore:	Schrute 1NR Wellbore #2	Survey Calculation Method:	Minimum Curvature
Design:	1NR Final Surveys	Database:	US_EDM

Survey										
Measured Depth (ft)	Inclination (°)	Azimuth (°)	Vertical Depth (ft)	+N/-S (ft)	+E/-W (ft)	Vertical Section (ft)	Dogleg Rate (°/100usft)	Build Rate (°/100usft)	Turn Rate (°/100usft)	
15,019.0	89.76	89.08	6,702.8	242.1	5,936.2	5,940.9	1.68	0.08	-1.68	
15,108.0	90.04	89.51	6,702.9	243.2	6,025.2	6,029.8	0.58	0.31	0.48	
15,198.0	89.71	90.94	6,703.1	242.9	6,115.2	6,119.8	1.63	-0.37	1.59	
15,287.0	90.28	89.05	6,703.1	242.9	6,204.2	6,208.7	2.22	0.64	-2.12	
15,377.0	90.23	90.22	6,702.7	243.4	6,294.2	6,298.7	1.30	-0.06	1.30	
15,467.0	90.17	88.95	6,702.4	244.1	6,384.2	6,388.7	1.41	-0.07	-1.41	
15,556.0	90.37	88.77	6,702.0	245.9	6,473.2	6,477.7	0.30	0.22	-0.20	
15,645.0	90.35	90.36	6,701.5	246.5	6,562.2	6,566.7	1.79	-0.02	1.79	
15,735.0	89.96	88.86	6,701.2	247.2	6,652.2	6,656.6	1.72	-0.43	-1.67	
15,824.0	90.19	89.44	6,701.1	248.5	6,741.2	6,745.6	0.70	0.26	0.65	
15,913.0	90.28	88.93	6,700.7	249.7	6,830.1	6,834.6	0.58	0.10	-0.57	
16,003.0	90.04	90.11	6,700.5	250.5	6,920.1	6,924.6	1.34	-0.27	1.31	
16,092.0	89.99	89.85	6,700.5	250.5	7,009.1	7,013.5	0.30	-0.06	-0.29	
16,181.0	89.72	89.77	6,700.7	250.8	7,098.1	7,102.5	0.32	-0.30	-0.09	
16,271.0	89.78	89.62	6,701.1	251.3	7,188.1	7,192.5	0.18	0.07	-0.17	
16,360.0	90.23	90.01	6,701.1	251.6	7,277.1	7,281.4	0.67	0.51	0.44	
16,450.0	90.50	90.30	6,700.5	251.3	7,367.1	7,371.4	0.44	0.30	0.32	
16,540.0	89.78	90.40	6,700.3	250.8	7,457.1	7,461.3	0.81	-0.80	0.11	
16,629.0	89.99	89.24	6,700.4	251.1	7,546.1	7,550.3	1.32	0.24	-1.30	
16,717.0	89.72	90.40	6,700.7	251.4	7,634.1	7,638.2	1.35	-0.31	1.32	
16,807.0	89.90	90.71	6,701.0	250.5	7,724.1	7,728.2	0.40	0.20	0.34	
16,897.0	90.28	90.18	6,700.8	249.8	7,814.1	7,818.1	0.72	0.42	-0.59	
16,986.0	90.59	87.99	6,700.2	251.2	7,903.1	7,907.1	2.49	0.35	-2.46	
17,075.0	90.26	87.93	6,699.5	254.4	7,992.0	7,996.1	0.38	-0.37	-0.07	
17,164.0	89.77	87.83	6,699.5	257.7	8,081.0	8,085.1	0.56	-0.55	-0.11	
17,254.0	89.54	88.87	6,700.0	260.3	8,170.9	8,175.1	1.18	-0.26	1.16	
17,344.0	88.81	89.51	6,701.3	261.5	8,260.9	8,265.1	1.08	-0.81	0.71	
17,434.0	89.13	88.82	6,702.9	262.8	8,350.9	8,355.0	0.84	0.36	-0.77	
17,524.0	89.18	88.04	6,704.3	265.3	8,440.8	8,445.0	0.87	0.06	-0.87	
17,613.0	89.48	89.11	6,705.3	267.5	8,529.8	8,534.0	1.25	0.34	1.20	
17,690.0	89.20	88.25	6,706.2	269.3	8,606.8	8,611.0	1.17	-0.36	-1.12	
17,717.0	89.20	88.25	6,706.6	270.1	8,633.8	8,638.0	0.00	0.00	0.00	
01NR BHL - 2536' FSL & 180' FEL										

Company:	PDC Energy Inc. DJ Basin	Local Co-ordinate Reference:	Well Schrute 1NR
Project:	SEC.16-T5N-R64W	TVD Reference:	WELL @ 4641.0ft (Ensign 142 - RKB 28')
Site:	Schrute 5N64W16 1-10 Pad Sec.16-T5N-R64W	MD Reference:	WELL @ 4641.0ft (Ensign 142 - RKB 28')
Well:	Schrute 1NR	North Reference:	True
Wellbore:	Schrute 1NR Wellbore #2	Survey Calculation Method:	Minimum Curvature
Design:	1NR Final Surveys	Database:	US_EDM

Formations						
Measured Depth (ft)	Vertical Depth (ft)	Name	Lithology	Dip (°)	Dip Direction (°)	
3,751.6	3,510.0	Parkman				
4,236.3	3,953.0	Sussex				
4,987.8	4,641.0	Fox Hills Aq Base				
5,301.8	4,928.0	Shannon				
7,008.6	6,497.0	Sharon Springs				
7,046.8	6,523.0	Niobrara A				
7,288.6	6,651.0	Niobrara B				
7,445.1	6,701.0	Niobrara C				

Design Annotations					
Measured Depth (ft)	Vertical Depth (ft)	Local Coordinates		Comment	
		+N/-S (ft)	+E/-W (ft)		
7,568.9	6,713.6	250.8	-1,512.7	01NR LP - 2523' FSL & 175' FWL	
17,717.0	6,706.6	270.1	8,633.8	01NR BHL - 2536' FSL & 180' FEL	

Checked By: _____	Approved By: _____	Date: _____
-------------------	--------------------	-------------