

# Cement Post Job Report

**Client:** PDC Energy

**Well Name:** Schrute 1NR

**API #:** 05-123-51655-00

**Job Date:** September 21, 2022

**Job Type:** New Well - 5.5" Production String

**Cement Company & Contact:** EXERO Well Integrity -  
Cheve Meyer 720-239-3819



ROCK SOLID  
WELL INTEGRITY  
SOLUTIONS

### TREATMENT REPORT

Client	Well	Rig	Date	Job Type				
PDC Energy	Schrute 1NR	Ensign 142	9/21/2022	Production				
Connection Type	Thread Type	Number of Stages	BHST Deg	BHCT Deg				
5 1/2" HP Cement Head	Buttress	1	230	230				
Well MD (ft)	Well TVD (ft)	Deg Dev.	Max-Cas/DP PSI	Max Ann. PSI				
17717'	6707	90						
Packer/Retainer/CIBP/DV Tool Depths		Top of Perfs	Bottom of Perfs	Number of Holes				
PACKER @ 3306'		NA	NA	NA				
String	Casing/Tubing Type	OD	Wt/ft	ID	OH Size	% XS Lead	% XS Tail	Depth (ft)
Surface	Casing	9.625	36					1700
Production	Casing	5.5	20	4.778	8.5	0	5	17712'

### PRE-JOB MUD AND WELL CONDITIONS

Mud Type	OBM	Pipe Rotation		Circulation Data				Water Requirements (bbls)	
Mud wt. ppg	10.6	Rotate Y,N	No	Circulate Time (hrs)	3			Spacers	140
Flow Temp	92	Rate	NA	Circulation Rate (bpm)	9			Stage 1 Lead	118
Vis. Sec/qt	44	Torque Val.	NA	Full Circ?	Full			Stage 1 Tail	239
PV (cP)	150	Time	NA	Gas Present (Y,N)	NO	Units	0	Stage 2 Lead	0
Yield Pt	6	Pipe Reciprocation		Centralizers/Plugs				Stage 2 Tail	0
10 sec gel	3	Recip Y,N	NO	Quantity & Type	1 TOP PLUG			Displacement	393
10 min gel	7	Stroke (ft)	NA	Top Plug/Type	CUSTOMER PROVIDED			Wash up	20
30 min gel	8	Recip time	NA	Bottom Plug/Type/Burst p	2 BOTTOM PLUGS			Total + 10% Safety	1002

### PRE-JOB CALCULATED MATERIALS, VOLUMES, & RATES

Prelush & Spacers		Stage 1 Lead: Class G		Stage 1 Tail: Class G		Stage 2 Lead: NA		Stage 2 Tail: NA		Displacement	
Spacer 1	Spacer	Density	12.9	Density	13.7	Density		Density		Fluid Type	Water
Density	12	Sacks	1276	Sacks	1515	Sacks		Sacks		Dens. ppg	8.33
Volume	140	Vol/bbls	256.8	Vol/bbls	369.7	Vol/bbls	0.0	Vol/bbls	0.0	Vol. bbl	393
Rate	10	Rate	9	Rate	10	Rate		Rate		Rate bpm	10
Spacer 2		Yield	1.13	Yield	1.37	Yield		Yield		Clay Stay?	NO
Density		Gal/Sk	3.90	Gal/Sk	6.63	Gal/Sk		Gal/Sk		Biocide ?	YES
Volume		% Excess	0	% Excess	0	% Excess		% Excess		Slow @ bbl	370
Rate		TOL (ft)	2350	TOT (ft)	8649	TOL (ft)		TOT (ft)		Bump PSI	3070

### POST JOB DETAILS, FINAL VOLUMES & PRESSURES

Final Displacement (bbls)	393
Bump Plug?	YES
Final Bump Pressure (psi)	3070
Full Returns throughout job?	FULL
Vol away/Time when returns lost	NA
Vol away/Time When returns regained	NA

Spacer to Surface?	YES		
Spacer volume returned	33		
Cement to surface?	NO		
Cement volume to surface stage 1 (bbls)	0	Stg 2	0
Surface top out?	NO		
Top out volume pumped (bbls)	NA		

Top out cement type	NA
Density	NA
Sack Quantity	NA
Mix water requirement (gal/sk)	NA
Yield	NA

### Summary of Additives Used on Job

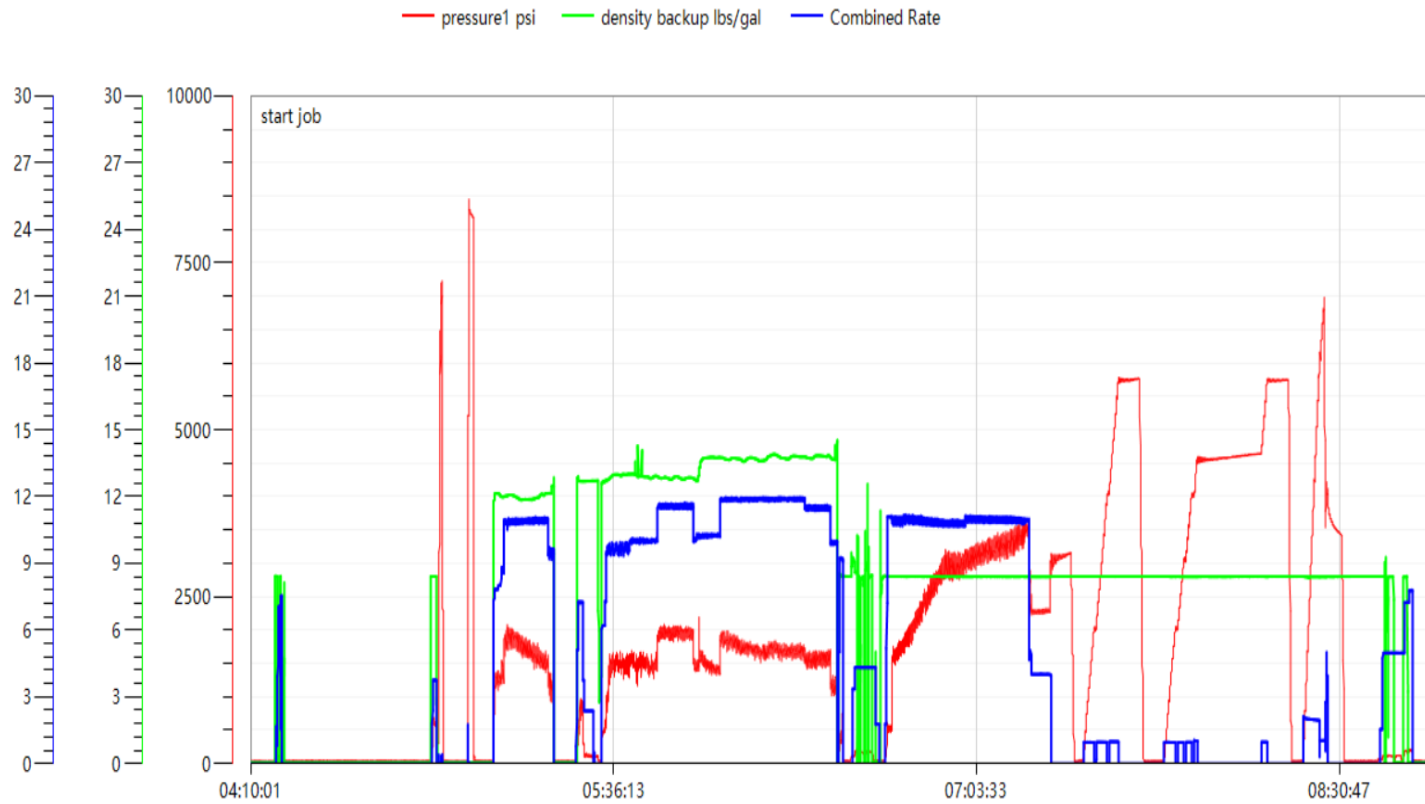
Surfactants (gal)	238
Clay Stabilizer (gal)	0
Biocide (gal)	20
Corrosion Inhibitor (gal)	0
Defoamer (gal)	25
PhenoSeal (LCM lbs)	0
Fiber (LCM lbs)	290

### Job Treatment Log

Client		Well				Exero Supervisor	
PDC Energy		Schrute 1NR				Cooper Hone 970-712-9636	
Ambient Conditions ( Temperature / Humidity / Air Pressure )						63 Deg F / 59 % / 25.15 in	
Date DD/MM	Time HH:MM	Density (ppg)	Rate (bpm)	Vol. (bbl)	Total Vol. (bbl)	Pressure (psi)	Treatment Comments
9/20/22	2:00 PM						CALL OUT FOR A REQUESTED ON LOCATION TIME OF 23:00
9/20/22	10:15 PM						ARRIVED ON LOCATION
9/21/22	2:00 AM						SPOT IN EQUIPMENT
9/21/22	2:10 AM						RIG UP
9/21/22	3:00 AM						WAITED ON RIG TO FINISH CIRCULATING
9/21/22	4:15 AM						SAFETY MEETING
9/21/22	4:30 AM						RIG UP FLOOR
9/21/22	4:52 AM	8.33	4.00	3.0	3.0	550	FILL LINES
9/21/22	5:01 AM					8300	TEST LINES TO 8000 PSI
9/21/22	5:05 AM						DROP BOTTOM PLUG #1
9/21/22	5:06 AM	12.00	10.00	140.0	140.0	1650	PUMP 140 BBLs OF 12# SPACER WITH FIBER AND SURFACTANT
9/21/22	5:22 AM						SHUT DOWN
9/21/22	5:25 AM						DROP BOTTOM PLUG #2
9/21/22	5:26 AM	12.90	11.00	257.0	257.0	2000	PUMP 257 BBLs OF 12.9#, 1.13Y, 3.90 GAL/SK LEAD CEMENT
9/21/22	5:57 AM	13.70	12.00	370.0	370.0	1800	PUMP 370 BBLs OF 13.7#, 1.37Y, 6.63 GAL/SK TAIL CEMENT
9/21/22	6:30 AM	8.60	9.50	8.0	8.0	750	PUMP 8 BBLs OF SUGAR WATER
9/21/22	6:31 AM						SHUT DOWN
9/21/22	6:32 AM						WASH PUMPS AND LINES
9/21/22	6:40 AM						DROP TOP PLUG
9/21/22	6:42 AM	8.33	11.00	10.0	393.0	550	BEGAN FRESHWATER DISPLACEMENT WITH BIOCIDES IN ALL
9/21/22	6:46 AM	8.33	11.00	50.0	393.0	1800	FRESH WATER DISPLACEMENT WITH BIOCIDES
9/21/22	6:51 AM	8.33	11.00	100.0	393.0	2400	FRESH WATER DISPLACEMENT WITH BIOCIDES
9/21/22	6:56 AM	8.33	11.00	150.0	393.0	3100	FRESH WATER DISPLACEMENT WITH BIOCIDES
9/21/22	7:00 AM	8.33	11.00	200.0	393.0	3400	FRESH WATER DISPLACEMENT WITH BIOCIDES
9/21/22	7:06 AM	8.33	11.00	250.0	393.0	3400	FRESH WATER DISPLACEMENT WITH BIOCIDES
9/21/22	7:10 AM	8.33	11.00	300.0	393.0	3320	FRESH WATER DISPLACEMENT WITH BIOCIDES
9/21/22	7:15 AM	8.33	11.00	350.0	393.0	3540	FRESH WATER DISPLACEMENT WITH BIOCIDES
9/21/22	7:17 AM	8.33	4.00	370.0	393.0	2260	SLOWED RATE TO LAND THE PLUG
9/21/22	7:21 AM	8.33	4.00	393.0	393.0	3070	BUMPED PLUG ON CALCULATED DISPLACEMENT RECEIVED 33 BBLs OF SPACER TO SURFACE
9/21/22	7:27 AM						CHECKED FLOATS, FLOATS ARE HOLDING RECEIVED 33 BBLs OF SPACER TO SURFACE
9/21/22	7:30 AM						BEGAN PACKER/ WET SHOE PROCEDURE
9/21/22	8:27 AM						BURST WET SHOE, BURST @ 6950 PSI
9/21/22	8:27 AM	8.33	2.00	2.0	2.0	4200	PUMP 2 BBL WET SHOE
9/21/22	8:27 AM						SHUT DOWN
9/21/22	8:31 AM						CHECKED FLOATS FLOATS ARE HOLDING, RECEIVED 4 BBLs BACK
9/21/22	8:35 AM						RIG UP TO STACK AND FLUSH CLEAN
9/21/22	8:40 AM						RIG DOWN
9/21/22	9:30 AM						CREW DEPARTED LOCATION

# Schrute 1NR Production Pump Chart – Pressure / Rate / Density

## Chart Report



Date:9/20/22 wellname:PDC SCHRUTE 1NR Location:KERSEY, COLORADO Country:USA Operators:ZACK CASBERG Supervisor:COOPER HONE Jobtype:PRODUCTION Address: Comment:



## Centralizer Depths

**Well Name: Schrute 1NR**

**Production, Set Depth: 17,712.0ftKB**

API 0512351655000		Surface Legal Location NESW 16 5N 64W		Field Name Wattenberg		State CO		Well Configuration Type Horizontal			
Ground Elevation (ft) 4,613.00		Original KB Elevation (ft) 4,641.00		KB-Ground Distance (ft) 28.00		Spud Date 9/17/2022 16:30		Rig Release Date 9/21/2022 19:30		On Production Date Abandon Date	

Casing Run Tally												
Run #	Ref #	Item Des	OD (in)	Wt (lb/ft)	Grade	Run?	Len (ft)	Centralized?	Ext Jwry	Connections	Top (ftKB)	Cum Len (ft)
7	1	Casing Joints	5 1/2	20.00	P-110	Yes	45.65	Yes			17,628.4	83.59
9	3	Casing Joints	5 1/2	20.00	P-110	Yes	45.78	Yes			17,537.0	175.05
11	5	Casing Joints	5 1/2	20.00	P-110	Yes	45.65	Yes			17,445.7	266.35
13	7	Casing Joints	5 1/2	20.00	P-110	Yes	44.70	Yes			17,355.3	356.72
15	9	Casing Joints	5 1/2	20.00	P-110	Yes	45.82	Yes			17,263.6	448.36
17		Marker Joint D	5 1/2	20.00	P-110	Yes	11.82	Yes			17,206.2	505.83
19	12	Casing Joints	5 1/2	20.00	P-110	Yes	45.68	Yes			17,114.8	597.19
21	14	Casing Joints	5 1/2	20.00	P-110	Yes	45.78	Yes			17,024.5	687.52
23	16	Casing Joints	5 1/2	20.00	P-110	Yes	45.80	Yes			16,932.9	779.14
25	18	Casing Joints	5 1/2	20.00	P-110	Yes	45.65	Yes			16,841.6	870.42
27	20	Casing Joints	5 1/2	20.00	P-110	Yes	45.82	Yes			16,752.8	959.24
29	22	Casing Joints	5 1/2	20.00	P-110	Yes	45.83	Yes			16,661.1	1,050.87
31	24	Casing Joints	5 1/2	20.00	P-110	Yes	35.50	Yes			16,580.0	1,132.05
33	26	Casing Joints	5 1/2	20.00	P-110	Yes	45.80	Yes			16,488.5	1,223.51
35	28	Casing Joints	5 1/2	20.00	P-110	Yes	45.82	Yes			16,396.9	1,315.13
37	30	Casing Joints	5 1/2	20.00	P-110	Yes	45.65	Yes			16,305.6	1,406.43
39	32	Casing Joints	5 1/2	20.00	P-110	Yes	45.68	Yes			16,215.9	1,496.06
41	34	Casing Joints	5 1/2	20.00	P-110	Yes	45.80	Yes			16,124.3	1,587.66
43	36	Casing Joints	5 1/2	20.00	P-110	Yes	45.87	Yes			16,032.8	1,679.21
45	38	Casing Joints	5 1/2	20.00	P-110	Yes	45.87	Yes			15,941.3	1,770.73
47	40	Casing Joints	5 1/2	20.00	P-110	Yes	45.64	Yes			15,850.0	1,862.05
49	42	Casing Joints	5 1/2	20.00	P-110	Yes	45.68	Yes			15,758.5	1,953.55
51	44	Casing Joints	5 1/2	20.00	P-110	Yes	45.68	Yes			15,667.0	2,045.05
53	46	Casing Joints	5 1/2	20.00	P-110	Yes	45.85	Yes			15,575.3	2,136.72
55	48	Casing Joints	5 1/2	20.00	P-110	Yes	45.85	Yes			15,483.8	2,228.23
57	50	Casing Joints	5 1/2	20.00	P-110	Yes	45.80	Yes			15,392.2	2,319.83
59	52	Casing Joints	5 1/2	20.00	P-110	Yes	45.98	Yes			15,300.3	2,411.69
61	54	Casing Joints	5 1/2	20.00	P-110	Yes	45.96	Yes			15,208.5	2,503.53
63	56	Casing Joints	5 1/2	20.00	P-110	Yes	45.95	Yes			15,116.6	2,595.44
65	58	Casing Joints	5 1/2	20.00	P-110	Yes	45.98	Yes			15,024.7	2,687.34
67	60	Casing Joints	5 1/2	20.00	P-110	Yes	45.95	Yes			14,932.8	2,779.19



## Centralizer Depths

**Well Name: Schrute 1NR**

**Production, Set Depth: 17,712.0ftKB**

API 0512351655000		Surface Legal Location NESW 16 5N 64W		Field Name Wattenberg		State CO		Well Configuration Type Horizontal			
Ground Elevation (ft) 4,613.00	Original KB Elevation (ft) 4,641.00	KB-Ground Distance (ft) 28.00	Spud Date 9/17/2022 16:30	Rig Release Date 9/21/2022 19:30	On Production Date	Abandon Date					

Casing Run Tally												
Run #	Ref #	Item Des	OD (in)	Wt (lb/ft)	Grade	Run?	Len (ft)	Centralized?	Ext Jwry	Connections	Top (ftKB)	Cum Len (ft)
69	62	Casing Joints	5 1/2	20.00	P-110	Yes	45.91	Yes			14,841.0	2,870.98
71	64	Casing Joints	5 1/2	20.00	P-110	Yes	45.98	Yes			14,749.1	2,962.86
73	66	Casing Joints	5 1/2	20.00	P-110	Yes	45.90	Yes			14,657.3	3,054.72
75	68	Casing Joints	5 1/2	20.00	P-110	Yes	36.24	Yes			14,575.1	3,136.86
77	70	Casing Joints	5 1/2	20.00	P-110	Yes	45.88	Yes			14,483.8	3,228.22
79	72	Casing Joints	5 1/2	20.00	P-110	Yes	45.90	Yes			14,392.5	3,319.48
81	74	Casing Joints	5 1/2	20.00	P-110	Yes	37.05	Yes			14,309.5	3,402.48
83	76	Casing Joints	5 1/2	20.00	P-110	Yes	45.96	Yes			14,217.6	3,494.39
85	78	Casing Joints	5 1/2	20.00	P-110	Yes	38.46	Yes			14,133.8	3,578.23
87	80	Casing Joints	5 1/2	20.00	P-110	Yes	45.90	Yes			14,046.4	3,665.58
89	82	Casing Joints	5 1/2	20.00	P-110	Yes	45.95	Yes			13,954.5	3,757.51
91	84	Casing Joints	5 1/2	20.00	P-110	Yes	45.95	Yes			13,862.6	3,849.44
93	86	Casing Joints	5 1/2	20.00	P-110	Yes	45.83	Yes			13,774.5	3,937.53
95	88	Casing Joints	5 1/2	20.00	P-110	Yes	45.84	Yes			13,683.0	4,029.03
97	90	Casing Joints	5 1/2	20.00	P-110	Yes	45.96	Yes			13,591.0	4,120.96
99	92	Casing Joints	5 1/2	20.00	P-110	Yes	45.84	Yes			13,499.4	4,212.64
101	94	Casing Joints	5 1/2	20.00	P-110	Yes	43.42	Yes			13,410.1	4,301.91
103	96	Casing Joints	5 1/2	20.00	P-110	Yes	45.63	Yes			13,318.6	4,393.38
105	98	Casing Joints	5 1/2	20.00	P-110	Yes	45.85	Yes			13,227.1	4,484.90
107	100	Casing Joints	5 1/2	20.00	P-110	Yes	45.83	Yes			13,135.7	4,576.35
109	102	Casing Joints	5 1/2	20.00	P-110	Yes	45.66	Yes			13,044.3	4,667.67
111	104	Casing Joints	5 1/2	20.00	P-110	Yes	45.64	Yes			12,953.0	4,758.96
113	106	Casing Joints	5 1/2	20.00	P-110	Yes	45.64	Yes			12,865.8	4,846.19
115	108	Casing Joints	5 1/2	20.00	P-110	Yes	45.63	Yes			12,774.4	4,937.63
117	110	Casing Joints	5 1/2	20.00	P-110	Yes	45.83	Yes			12,682.7	5,029.30
121	113	Casing Joints	5 1/2	20.00	P-110	Yes	45.84	Yes			12,533.9	5,178.10
123	115	Casing Joints	5 1/2	20.00	P-110	Yes	45.83	Yes			12,442.3	5,269.73
125	117	Casing Joints	5 1/2	20.00	P-110	Yes	45.62	Yes			12,352.8	5,359.23
127	119	Casing Joints	5 1/2	20.00	P-110	Yes	45.63	Yes			12,261.3	5,450.70
129	121	Casing Joints	5 1/2	20.00	P-110	Yes	45.84	Yes			12,169.6	5,542.38
131	123	Casing Joints	5 1/2	20.00	P-110	Yes	43.82	Yes			12,080.0	5,632.04



## Centralizer Depths

**Well Name: Schrute 1NR**

**Production, Set Depth: 17,712.0ftKB**

API 0512351655000		Surface Legal Location NESW 16 5N 64W		Field Name Wattenberg		State CO		Well Configuration Type Horizontal			
Ground Elevation (ft) 4,613.00	Original KB Elevation (ft) 4,641.00	KB-Ground Distance (ft) 28.00	Spud Date 9/17/2022 16:30	Rig Release Date 9/21/2022 19:30	On Production Date	Abandon Date					

Casing Run Tally												
Run #	Ref #	Item Des	OD (in)	Wt (lb/ft)	Grade	Run?	Len (ft)	Centralized?	Ext Jwry	Connections	Top (ftKB)	Cum Len (ft)
133	125	Casing Joints	5 1/2	20.00	P-110	Yes	45.65	Yes			11,988.7	5,723.32
135	127	Casing Joints	5 1/2	20.00	P-110	Yes	45.84	Yes			11,897.0	5,814.99
137	129	Casing Joints	5 1/2	20.00	P-110	Yes	45.82	Yes			11,805.4	5,906.65
139	131	Casing Joints	5 1/2	20.00	P-110	Yes	45.64	Yes			11,715.9	5,996.09
141	133	Casing Joints	5 1/2	20.00	P-110	Yes	45.62	Yes			11,624.6	6,087.39
143	135	Casing Joints	5 1/2	20.00	P-110	Yes	45.63	Yes			11,533.1	6,178.87
145	137	Casing Joints	5 1/2	20.00	P-110	Yes	45.90	Yes			11,441.3	6,270.72
147	139	Casing Joints	5 1/2	20.00	P-110	Yes	45.67	Yes			11,349.7	6,362.35
149	141	Casing Joints	5 1/2	20.00	P-110	Yes	46.81	Yes			11,259.1	6,452.87
151	143	Casing Joints	5 1/2	20.00	P-110	Yes	46.02	Yes			11,167.1	6,544.89
153	145	Casing Joints	5 1/2	20.00	P-110	Yes	45.88	Yes			11,075.2	6,636.77
155	147	Casing Joints	5 1/2	20.00	P-110	Yes	45.96	Yes			10,983.3	6,728.69
157	149	Casing Joints	5 1/2	20.00	P-110	Yes	44.30	Yes			10,893.1	6,818.95
159	151	Casing Joints	5 1/2	20.00	P-110	Yes	45.88	Yes			10,800.6	6,911.38
161	153	Casing Joints	5 1/2	20.00	P-110	Yes	45.98	Yes			10,709.7	7,002.32
163	155	Casing Joints	5 1/2	20.00	P-110	Yes	45.90	Yes			10,617.8	7,094.17
165	157	Casing Joints	5 1/2	20.00	P-110	Yes	45.62	Yes			10,526.4	7,185.63
167	159	Casing Joints	5 1/2	20.00	P-110	Yes	34.91	Yes			10,453.7	7,258.30
169	161	Casing Joints	5 1/2	20.00	P-110	Yes	45.88	Yes			10,360.7	7,351.30
171	163	Casing Joints	5 1/2	20.00	P-110	Yes	45.96	Yes			10,268.8	7,443.25
173	165	Casing Joints	5 1/2	20.00	P-110	Yes	45.95	Yes			10,176.9	7,535.10
175	167	Casing Joints	5 1/2	20.00	P-110	Yes	40.51	Yes			10,089.6	7,622.41
177	169	Casing Joints	5 1/2	20.00	P-110	Yes	45.88	Yes			9,997.1	7,714.93
179	171	Casing Joints	5 1/2	20.00	P-110	Yes	47.04	Yes			9,902.9	7,809.10
181	173	Casing Joints	5 1/2	20.00	P-110	Yes	46.15	Yes			9,810.4	7,901.65
183	175	Casing Joints	5 1/2	20.00	P-110	Yes	47.14	Yes			9,717.6	7,994.42
185	177	Casing Joints	5 1/2	20.00	P-110	Yes	45.91	Yes			9,627.9	8,084.15
187	179	Casing Joints	5 1/2	20.00	P-110	Yes	42.72	Yes			9,539.1	8,172.91
189	181	Casing Joints	5 1/2	20.00	P-110	Yes	47.12	Yes			9,445.1	8,266.92
191	183	Casing Joints	5 1/2	20.00	P-110	Yes	47.13	Yes			9,350.8	8,361.17
193	185	Casing Joints	5 1/2	20.00	P-110	Yes	45.05	Yes			9,258.7	8,453.30



## Centralizer Depths

**Well Name: Schrute 1NR**

**Production, Set Depth: 17,712.0ftKB**

API 0512351655000		Surface Legal Location NESW 16 5N 64W		Field Name Wattenberg		State CO		Well Configuration Type Horizontal			
Ground Elevation (ft) 4,613.00	Original KB Elevation (ft) 4,641.00	KB-Ground Distance (ft) 28.00	Spud Date 9/17/2022 16:30	Rig Release Date 9/21/2022 19:30	On Production Date	Abandon Date					

### Casing Run Tally

Run #	Ref #	Item Des	OD (in)	Wt (lb/ft)	Grade	Run?	Len (ft)	Centralized?	Ext Jwry	Connections	Top (ftKB)	Cum Len (ft)
195	187	Casing Joints	5 1/2	20.00	P-110	Yes	45.98	Yes			9,166.8	8,545.17
197	189	Casing Joints	5 1/2	20.00	P-110	Yes	46.16	Yes			9,076.2	8,635.84
199	191	Casing Joints	5 1/2	20.00	P-110	Yes	45.08	Yes			8,985.9	8,726.08
201	193	Casing Joints	5 1/2	20.00	P-110	Yes	45.97	Yes			8,893.2	8,818.83
203	195	Casing Joints	5 1/2	20.00	P-110	Yes	45.89	Yes			8,806.9	8,905.08
205	197	Casing Joints	5 1/2	20.00	P-110	Yes	45.86	Yes			8,715.1	8,996.89
207	199	Casing Joints	5 1/2	20.00	P-110	Yes	45.88	Yes			8,623.4	9,088.65
209	201	Casing Joints	5 1/2	20.00	P-110	Yes	45.88	Yes			8,531.6	9,180.41
211	203	Casing Joints	5 1/2	20.00	P-110	Yes	45.88	Yes			8,444.8	9,267.18
213	205	Casing Joints	5 1/2	20.00	P-110	Yes	46.16	Yes			8,352.8	9,359.22
215	207	Casing Joints	5 1/2	20.00	P-110	Yes	45.90	Yes			8,263.3	9,448.66
217	209	Casing Joints	5 1/2	20.00	P-110	Yes	45.94	Yes			8,171.4	9,540.62
219	211	Casing Joints	5 1/2	20.00	P-110	Yes	46.05	Yes			8,079.4	9,632.61
221	213	Casing Joints	5 1/2	20.00	P-110	Yes	45.80	Yes			7,987.7	9,724.28
223	215	Casing Joints	5 1/2	20.00	P-110	Yes	45.95	Yes			7,895.9	9,816.11
225	217	Casing Joints	5 1/2	20.00	P-110	Yes	45.88	Yes			7,804.3	9,907.71
227	219	Casing Joints	5 1/2	20.00	P-110	Yes	45.95	Yes			7,712.8	9,999.17
229	221	Casing Joints	5 1/2	20.00	P-110	Yes	45.98	Yes			7,622.6	10,089.38
231		Marker Joint F	5 1/2	20.00	P-110	Yes	11.85	Yes			7,570.3	10,141.75
232	223	Casing Joints	5 1/2	20.00	P-110	Yes	45.95	Yes			7,524.3	10,187.70
233	224	Casing Joints	5 1/2	20.00	P-110	Yes	45.86	Yes			7,478.4	10,233.56
234	225	Casing Joints	5 1/2	20.00	P-110	Yes	45.88	Yes			7,432.6	10,279.44
235	226	Casing Joints	5 1/2	20.00	P-110	Yes	45.95	Yes			7,386.6	10,325.39
236	227	Casing Joints	5 1/2	20.00	P-110	Yes	45.72	Yes			7,340.9	10,371.11
237	228	Casing Joints	5 1/2	20.00	P-110	Yes	45.88	Yes			7,295.0	10,416.99
238	229	Casing Joints	5 1/2	20.00	P-110	Yes	45.88	Yes			7,249.1	10,462.87
239	230	Casing Joints	5 1/2	20.00	P-110	Yes	45.84	Yes			7,203.3	10,508.71
240	231	Casing Joints	5 1/2	20.00	P-110	Yes	45.96	Yes			7,157.3	10,554.67
241	232	Casing Joints	5 1/2	20.00	P-110	Yes	45.95	Yes			7,111.4	10,600.62
242	233	Casing Joints	5 1/2	20.00	P-110	Yes	45.90	Yes			7,065.5	10,646.52
243	234	Casing Joints	5 1/2	20.00	P-110	Yes	45.90	Yes			7,019.6	10,692.42



## Centralizer Depths

**Well Name: Schrute 1NR**

**Production, Set Depth: 17,712.0ftKB**

API 0512351655000		Surface Legal Location NESW 16 5N 64W		Field Name Wattenberg		State CO		Well Configuration Type Horizontal			
Ground Elevation (ft) 4,613.00	Original KB Elevation (ft) 4,641.00	KB-Ground Distance (ft) 28.00	Spud Date 9/17/2022 16:30	Rig Release Date 9/21/2022 19:30	On Production Date	Abandon Date					

### Casing Run Tally

Run #	Ref #	Item Des	OD (in)	Wt (lb/ft)	Grade	Run?	Len (ft)	Centralized?	Ext Jwry	Connections	Top (ftKB)	Cum Len (ft)
244	235	Casing Joints	5 1/2	20.00	P-110	Yes	45.58	Yes			6,974.0	10,738.00
245	236	Casing Joints	5 1/2	20.00	P-110	Yes	45.82	Yes			6,928.2	10,783.82
246	237	Casing Joints	5 1/2	20.00	P-110	Yes	44.34	Yes			6,883.8	10,828.16
247	238	Casing Joints	5 1/2	20.00	P-110	Yes	45.68	Yes			6,838.2	10,873.84
248	239	Casing Joints	5 1/2	20.00	P-110	Yes	45.59	Yes			6,792.6	10,919.43
249	240	Casing Joints	5 1/2	20.00	P-110	Yes	45.95	Yes			6,746.6	10,965.38
250	241	Casing Joints	5 1/2	20.00	P-110	Yes	45.64	Yes			6,701.0	11,011.02
251	242	Casing Joints	5 1/2	20.00	P-110	Yes	41.91	Yes			6,659.1	11,052.93
252	243	Casing Joints	5 1/2	20.00	P-110	Yes	43.71	Yes			6,615.4	11,096.64
253	244	Casing Joints	5 1/2	20.00	P-110	Yes	44.18	Yes			6,571.2	11,140.82
254	245	Casing Joints	5 1/2	20.00	P-110	Yes	45.65	Yes			6,525.5	11,186.47
255	246	Casing Joints	5 1/2	20.00	P-110	Yes	45.65	Yes			6,479.9	11,232.12
256	247	Casing Joints	5 1/2	20.00	P-110	Yes	45.68	Yes			6,434.2	11,277.80
257	248	Casing Joints	5 1/2	20.00	P-110	Yes	44.45	Yes			6,389.8	11,322.25
258	249	Casing Joints	5 1/2	20.00	P-110	Yes	45.82	Yes			6,343.9	11,368.07
259	250	Casing Joints	5 1/2	20.00	P-110	Yes	43.36	Yes			6,300.6	11,411.43
260	251	Casing Joints	5 1/2	20.00	P-110	Yes	43.91	Yes			6,256.7	11,455.34
261	252	Casing Joints	5 1/2	20.00	P-110	Yes	45.62	Yes			6,211.0	11,500.96
262	253	Casing Joints	5 1/2	20.00	P-110	Yes	44.70	Yes			6,166.3	11,545.66
263		Marker Joint G	5 1/2	20.00	P-110	Yes	11.81	Yes			6,154.5	11,557.47
264	254	Casing Joints	5 1/2	20.00	P-110	Yes	45.84	Yes			6,108.7	11,603.31
265	255	Casing Joints	5 1/2	20.00	P-110	Yes	45.62	Yes			6,063.1	11,648.93
266	256	Casing Joints	5 1/2	20.00	P-110	Yes	45.68	Yes			6,017.4	11,694.61
267	257	Casing Joints	5 1/2	20.00	P-110	Yes	45.65	Yes			5,971.7	11,740.26
268	258	Casing Joints	5 1/2	20.00	P-110	Yes	45.67	Yes			5,926.1	11,785.93
269	259	Casing Joints	5 1/2	20.00	P-110	Yes	45.60	Yes			5,880.5	11,831.53
270	260	Casing Joints	5 1/2	20.00	P-110	Yes	45.80	Yes			5,834.7	11,877.33
271	261	Casing Joints	5 1/2	20.00	P-110	Yes	43.88	Yes			5,790.8	11,921.21
272	262	Casing Joints	5 1/2	20.00	P-110	Yes	45.85	Yes			5,744.9	11,967.06
273	263	Casing Joints	5 1/2	20.00	P-110	Yes	45.68	Yes			5,699.3	12,012.74
274	264	Casing Joints	5 1/2	20.00	P-110	Yes	43.16	Yes			5,656.1	12,055.90



## Centralizer Depths

**Well Name: Schrute 1NR**

**Production, Set Depth: 17,712.0ftKB**

API 0512351655000		Surface Legal Location NESW 16 5N 64W		Field Name Wattenberg		State CO		Well Configuration Type Horizontal			
Ground Elevation (ft) 4,613.00		Original KB Elevation (ft) 4,641.00		KB-Ground Distance (ft) 28.00		Spud Date 9/17/2022 16:30		Rig Release Date 9/21/2022 19:30		On Production Date Abandon Date	

### Casing Run Tally

Run #	Ref #	Item Des	OD (in)	Wt (lb/ft)	Grade	Run?	Len (ft)	Centralized?	Ext Jwry	Connections	Top (ftKB)	Cum Len (ft)
275	265	Casing Joints	5 1/2	20.00	P-110	Yes	43.78	Yes			5,612.3	12,099.68
276	266	Casing Joints	5 1/2	20.00	P-110	Yes	45.02	Yes			5,567.3	12,144.70
277	267	Casing Joints	5 1/2	20.00	P-110	Yes	44.08	Yes			5,523.2	12,188.78
278	268	Casing Joints	5 1/2	20.00	P-110	Yes	45.65	Yes			5,477.6	12,234.43
279	269	Casing Joints	5 1/2	20.00	P-110	Yes	45.66	Yes			5,431.9	12,280.09
280	270	Casing Joints	5 1/2	20.00	P-110	Yes	45.82	Yes			5,386.1	12,325.91
281	271	Casing Joints	5 1/2	20.00	P-110	Yes	45.85	Yes			5,340.2	12,371.76
282	272	Casing Joints	5 1/2	20.00	P-110	Yes	45.85	Yes			5,294.4	12,417.61
283	273	Casing Joints	5 1/2	20.00	P-110	Yes	44.38	Yes			5,250.0	12,461.99
284	274	Casing Joints	5 1/2	20.00	P-110	Yes	45.83	Yes			5,204.2	12,507.82
285	275	Casing Joints	5 1/2	20.00	P-110	Yes	45.68	Yes			5,158.5	12,553.50
286	276	Casing Joints	5 1/2	20.00	P-110	Yes	37.58	Yes			5,120.9	12,591.08
287	277	Casing Joints	5 1/2	20.00	P-110	Yes	45.70	Yes			5,075.2	12,636.78
288	278	Casing Joints	5 1/2	20.00	P-110	Yes	43.80	Yes			5,031.4	12,680.58
289	279	Casing Joints	5 1/2	20.00	P-110	Yes	45.84	Yes			4,985.6	12,726.42
290	280	Casing Joints	5 1/2	20.00	P-110	Yes	43.42	Yes			4,942.2	12,769.84
291	281	Casing Joints	5 1/2	20.00	P-110	Yes	45.80	Yes			4,896.4	12,815.64
292	282	Casing Joints	5 1/2	20.00	P-110	Yes	43.55	Yes			4,852.8	12,859.19
293	283	Casing Joints	5 1/2	20.00	P-110	Yes	45.84	Yes			4,807.0	12,905.03
294	284	Casing Joints	5 1/2	20.00	P-110	Yes	45.84	Yes			4,761.1	12,950.87
295	285	Casing Joints	5 1/2	20.00	P-110	Yes	45.82	Yes			4,715.3	12,996.69
296	286	Casing Joints	5 1/2	20.00	P-110	Yes	43.90	Yes			4,671.4	13,040.59
297	287	Casing Joints	5 1/2	20.00	P-110	Yes	45.83	Yes			4,625.6	13,086.42
298	288	Casing Joints	5 1/2	20.00	P-110	Yes	45.62	Yes			4,580.0	13,132.04
299	289	Casing Joints	5 1/2	20.00	P-110	Yes	45.82	Yes			4,534.1	13,177.86
300	290	Casing Joints	5 1/2	20.00	P-110	Yes	45.68	Yes			4,488.5	13,223.54
301	291	Casing Joints	5 1/2	20.00	P-110	Yes	43.68	Yes			4,444.8	13,267.22
302	292	Casing Joints	5 1/2	20.00	P-110	Yes	45.81	Yes			4,399.0	13,313.03
303	293	Casing Joints	5 1/2	20.00	P-110	Yes	45.65	Yes			4,353.3	13,358.68
304	294	Casing Joints	5 1/2	20.00	P-110	Yes	41.90	Yes			4,311.4	13,400.58
305	295	Casing Joints	5 1/2	20.00	P-110	Yes	41.60	Yes			4,269.8	13,442.18



## Centralizer Depths

**Well Name: Schrute 1NR**

**Production, Set Depth: 17,712.0ftKB**

API 0512351655000		Surface Legal Location NESW 16 5N 64W		Field Name Wattenberg		State CO		Well Configuration Type Horizontal			
Ground Elevation (ft) 4,613.00	Original KB Elevation (ft) 4,641.00	KB-Ground Distance (ft) 28.00	Spud Date 9/17/2022 16:30	Rig Release Date 9/21/2022 19:30	On Production Date	Abandon Date					

### Casing Run Tally

Run #	Ref #	Item Des	OD (in)	Wt (lb/ft)	Grade	Run?	Len (ft)	Centralized?	Ext Jwly	Connections	Top (ftKB)	Cum Len (ft)
306	296	Casing Joints	5 1/2	20.00	P-110	Yes	45.84	Yes			4,224.0	13,488.02
307	297	Casing Joints	5 1/2	20.00	P-110	Yes	45.63	Yes			4,178.4	13,533.65
308	298	Casing Joints	5 1/2	20.00	P-110	Yes	45.78	Yes			4,132.6	13,579.43
309	299	Casing Joints	5 1/2	20.00	P-110	Yes	45.81	Yes			4,086.8	13,625.24
310	300	Casing Joints	5 1/2	20.00	P-110	Yes	45.68	Yes			4,041.1	13,670.92
311	301	Casing Joints	5 1/2	20.00	P-110	Yes	37.57	Yes			4,003.5	13,708.49
312	302	Casing Joints	5 1/2	20.00	P-110	Yes	45.81	Yes			3,957.7	13,754.30
313	303	Casing Joints	5 1/2	20.00	P-110	Yes	45.84	Yes			3,911.9	13,800.14
314	304	Casing Joints	5 1/2	20.00	P-110	Yes	45.66	Yes			3,866.2	13,845.80
315	305	Casing Joints	5 1/2	20.00	P-110	Yes	45.66	Yes			3,820.5	13,891.46
316	306	Casing Joints	5 1/2	20.00	P-110	Yes	45.85	Yes			3,774.7	13,937.31
317	307	Casing Joints	5 1/2	20.00	P-110	Yes	45.82	Yes			3,728.9	13,983.13
318	308	Casing Joints	5 1/2	20.00	P-110	Yes	45.64	Yes			3,683.2	14,028.77
319	309	Casing Joints	5 1/2	20.00	P-110	Yes	43.44	Yes			3,639.8	14,072.21
320	310	Casing Joints	5 1/2	20.00	P-110	Yes	44.72	Yes			3,595.1	14,116.93
321	311	Casing Joints	5 1/2	20.00	P-110	Yes	43.91	Yes			3,551.2	14,160.84
322	312	Casing Joints	5 1/2	20.00	P-110	Yes	45.65	Yes			3,505.5	14,206.49
323	313	Casing Joints	5 1/2	20.00	P-110	Yes	45.66	Yes			3,459.9	14,252.15
324	314	Casing Joints	5 1/2	20.00	P-110	Yes	45.84	Yes			3,414.0	14,297.99
325	315	Casing Joints	5 1/2	20.00	P-110	Yes	45.66	Yes			3,368.4	14,343.65
326	316	Casing Joints	5 1/2	20.00	P-110	Yes	45.68	Yes			3,322.7	14,389.33
328	317	Casing Joints	5 1/2	20.00	P-110	Yes	45.60	Yes			3,261.3	14,450.69
329	318	Casing Joints	5 1/2	20.00	P-110	Yes	45.83	Yes			3,215.5	14,496.52
330	319	Casing Joints	5 1/2	20.00	P-110	Yes	45.86	Yes			3,169.6	14,542.38
331	320	Casing Joints	5 1/2	20.00	P-110	Yes	45.84	Yes			3,123.8	14,588.22
332	321	Casing Joints	5 1/2	20.00	P-110	Yes	44.90	Yes			3,078.9	14,633.12
333	322	Casing Joints	5 1/2	20.00	P-110	Yes	45.63	Yes			3,033.3	14,678.75
334	323	Casing Joints	5 1/2	20.00	P-110	Yes	43.74	Yes			2,989.5	14,722.49
335	324	Casing Joints	5 1/2	20.00	P-110	Yes	44.01	Yes			2,945.5	14,766.50
336	325	Casing Joints	5 1/2	20.00	P-110	Yes	43.95	Yes			2,901.6	14,810.45
337	326	Casing Joints	5 1/2	20.00	P-110	Yes	45.81	Yes			2,855.7	14,856.26



## Centralizer Depths

**Well Name: Schrute 1NR**

**Production, Set Depth: 17,712.0ftKB**

API 0512351655000		Surface Legal Location NESW 16 5N 64W		Field Name Wattenberg		State CO		Well Configuration Type Horizontal			
Ground Elevation (ft) 4,613.00	Original KB Elevation (ft) 4,641.00	KB-Ground Distance (ft) 28.00	Spud Date 9/17/2022 16:30	Rig Release Date 9/21/2022 19:30	On Production Date	Abandon Date					

Casing Run Tally												
Run #	Ref #	Item Des	OD (in)	Wt (lb/ft)	Grade	Run?	Len (ft)	Centralized?	Ext Jwry	Connections	Top (ftKB)	Cum Len (ft)
338	327	Casing Joints	5 1/2	20.00	P-110	Yes	45.64	Yes			2,810.1	14,901.90
339	328	Casing Joints	5 1/2	20.00	P-110	Yes	45.65	Yes			2,764.5	14,947.55
340	329	Casing Joints	5 1/2	20.00	P-110	Yes	45.84	Yes			2,718.6	14,993.39
341	330	Casing Joints	5 1/2	20.00	P-110	Yes	45.82	Yes			2,672.8	15,039.21
342	331	Casing Joints	5 1/2	20.00	P-110	Yes	45.64	Yes			2,627.2	15,084.85
343	332	Casing Joints	5 1/2	20.00	P-110	Yes	45.63	Yes			2,581.5	15,130.48
344	333	Casing Joints	5 1/2	20.00	P-110	Yes	45.66	Yes			2,535.9	15,176.14
345	334	Casing Joints	5 1/2	20.00	P-110	Yes	45.80	Yes			2,490.1	15,221.94
346	335	Casing Joints	5 1/2	20.00	P-110	Yes	45.65	Yes			2,444.4	15,267.59
347	336	Casing Joints	5 1/2	20.00	P-110	Yes	44.60	Yes			2,399.8	15,312.19
348	337	Casing Joints	5 1/2	20.00	P-110	Yes	44.55	Yes			2,355.3	15,356.74
349	338	Casing Joints	5 1/2	20.00	P-110	Yes	44.53	Yes			2,310.7	15,401.27
350	339	Casing Joints	5 1/2	20.00	P-110	Yes	43.84	Yes			2,266.9	15,445.11
351	340	Casing Joints	5 1/2	20.00	P-110	Yes	45.68	Yes			2,221.2	15,490.79
352	341	Casing Joints	5 1/2	20.00	P-110	Yes	41.58	Yes			2,179.6	15,532.37
353	342	Casing Joints	5 1/2	20.00	P-110	Yes	45.64	Yes			2,134.0	15,578.01
354	343	Casing Joints	5 1/2	20.00	P-110	Yes	45.78	Yes			2,088.2	15,623.79
355	344	Casing Joints	5 1/2	20.00	P-110	Yes	44.69	Yes			2,043.5	15,668.48
356	345	Casing Joints	5 1/2	20.00	P-110	Yes	44.68	Yes			1,998.8	15,713.16
357	346	Casing Joints	5 1/2	20.00	P-110	Yes	44.65	Yes			1,954.2	15,757.81
358	347	Casing Joints	5 1/2	20.00	P-110	Yes	44.65	Yes			1,909.5	15,802.46
359	348	Casing Joints	5 1/2	20.00	P-110	Yes	45.85	Yes			1,863.7	15,848.31
360	349	Casing Joints	5 1/2	20.00	P-110	Yes	45.84	Yes			1,817.9	15,894.15
361	350	Casing Joints	5 1/2	20.00	P-110	Yes	43.65	Yes			1,774.2	15,937.80
362	351	Casing Joints	5 1/2	20.00	P-110	Yes	45.80	Yes			1,728.4	15,983.60
363	352	Casing Joints	5 1/2	20.00	P-110	Yes	45.73	Yes			1,682.7	16,029.33
364	353	Casing Joints	5 1/2	20.00	P-110	Yes	45.68	Yes			1,637.0	16,075.01
365	354	Casing Joints	5 1/2	20.00	P-110	Yes	44.71	Yes			1,592.3	16,119.72
366	355	Casing Joints	5 1/2	20.00	P-110	Yes	44.70	Yes			1,547.6	16,164.42
367	356	Casing Joints	5 1/2	20.00	P-110	Yes	44.57	Yes			1,503.0	16,208.99
368	357	Casing Joints	5 1/2	20.00	P-110	Yes	45.68	Yes			1,457.3	16,254.67



## Centralizer Depths

**Well Name: Schrute 1NR**

**Production, Set Depth: 17,712.0ftKB**

API 0512351655000		Surface Legal Location NESW 16 5N 64W		Field Name Wattenberg		State CO		Well Configuration Type Horizontal	
Ground Elevation (ft) 4,613.00	Original KB Elevation (ft) 4,641.00	KB-Ground Distance (ft) 28.00	Spud Date 9/17/2022 16:30	Rig Release Date 9/21/2022 19:30	On Production Date	Abandon Date			

Casing Run Tally												
Run #	Ref #	Item Des	OD (in)	Wt (lb/ft)	Grade	Run?	Len (ft)	Centralized?	Ext Jwry	Connections	Top (ftKB)	Cum Len (ft)
369	358	Casing Joints	5 1/2	20.00	P-110	Yes	45.80	Yes			1,411.5	16,300.47
370	359	Casing Joints	5 1/2	20.00	P-110	Yes	45.66	Yes			1,365.9	16,346.13
371	360	Casing Joints	5 1/2	20.00	P-110	Yes	45.66	Yes			1,320.2	16,391.79
372	361	Casing Joints	5 1/2	20.00	P-110	Yes	45.74	Yes			1,274.5	16,437.53
373	362	Casing Joints	5 1/2	20.00	P-110	Yes	45.80	Yes			1,228.7	16,483.33
374	363	Casing Joints	5 1/2	20.00	P-110	Yes	45.79	Yes			1,182.9	16,529.12
375	364	Casing Joints	5 1/2	20.00	P-110	Yes	45.66	Yes			1,137.2	16,574.78
376	365	Casing Joints	5 1/2	20.00	P-110	Yes	43.54	Yes			1,093.7	16,618.32
377	366	Casing Joints	5 1/2	20.00	P-110	Yes	45.81	Yes			1,047.9	16,664.13
378	367	Casing Joints	5 1/2	20.00	P-110	Yes	45.68	Yes			1,002.2	16,709.81
379	368	Casing Joints	5 1/2	20.00	P-110	Yes	45.82	Yes			956.4	16,755.63
380	369	Casing Joints	5 1/2	20.00	P-110	Yes	45.66	Yes			910.7	16,801.29
381	370	Casing Joints	5 1/2	20.00	P-110	Yes	45.65	Yes			865.1	16,846.94
382	371	Casing Joints	5 1/2	20.00	P-110	Yes	45.66	Yes			819.4	16,892.60
383	372	Casing Joints	5 1/2	20.00	P-110	Yes	45.79	Yes			773.6	16,938.39
384	373	Casing Joints	5 1/2	20.00	P-110	Yes	45.80	Yes			727.8	16,984.19
385	374	Casing Joints	5 1/2	20.00	P-110	Yes	45.65	Yes			682.2	17,029.84
386	375	Casing Joints	5 1/2	20.00	P-110	Yes	45.65	Yes			636.5	17,075.49
387	376	Casing Joints	5 1/2	20.00	P-110	Yes	45.74	Yes			590.8	17,121.23
388	377	Casing Joints	5 1/2	20.00	P-110	Yes	45.81	Yes			545.0	17,167.04
389	378	Casing Joints	5 1/2	20.00	P-110	Yes	45.65	Yes			499.3	17,212.69