



NORTHWEST PARKWAY

NORTHWEST B PAD
NENW_09_1S_68W

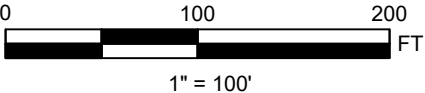
NOTES

**UPDATED AERIAL IMAGERY COLLECTED BY RPG
RESOURCES BY USE OF UAV IN SEPTEMBER 2022**

FIELD OBSERVED DISTURBED AREA : 8.63 ACRES

INT. RECLAMATION PAD FOOTPRINT AREA: 4.01 ACRES

INT. RECLAMATION AREA: 4.62 ACRES



LEGEND

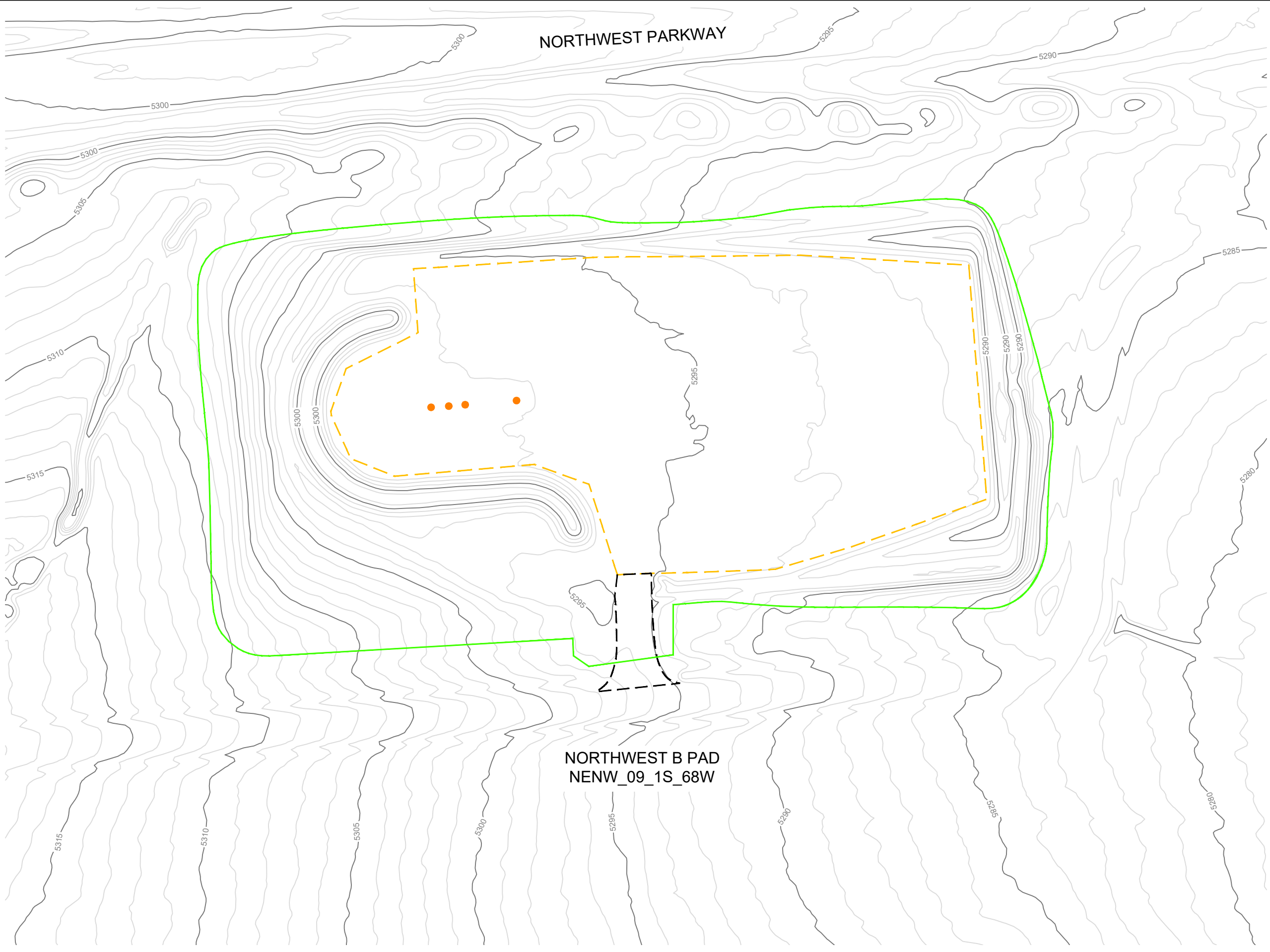
- ACCESS ROAD
- FIELD OBSERVED DISTURBED AREA
- - - INTERIM RECLAMATION PAD EDGE
- WELL HEAD



**NORTHWEST B PAD
INTERIM RECLAMATION EXHIBITS**

SECTION 09, TOWNSHIP 1 S, RANGE 68 W,
BROOMFIELD COUNTY, COLORADO

SHEET NAME:	SHEET NO.
PAD AERIAL	1 OF 2



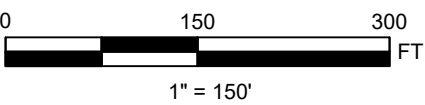

NOTES

****UPDATED AERIAL IMAGERY COLLECTED BY RPG RESOURCES BY USE OF UAV IN SEPTEMBER 2022****


FIELD OBSERVED DISTURBED AREA : 8.63 ACRES

INT. RECLAMATION PAD FOOTPRINT AREA: 4.01 ACRES


INT. RECLAMATION AREA: 4.62 ACRES



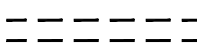
LEGEND

 4400


MAJOR CONTOUR




MINOR CONTOUR




ACCESS ROAD



FIELD OBSERVED DISTURBED AREA



INTERIM RECLAMATION PAD EDGE



WELL HEAD



NORTHWEST B PAD

INTERIM RECLAMATION EXHIBITS

SECTION 09, TOWNSHIP 1 S, RANGE 68 W,
BROOMFIELD COUNTY, COLORADO

SHEET NAME:	SHEET NO.
PAD TOPO	2 OF 2