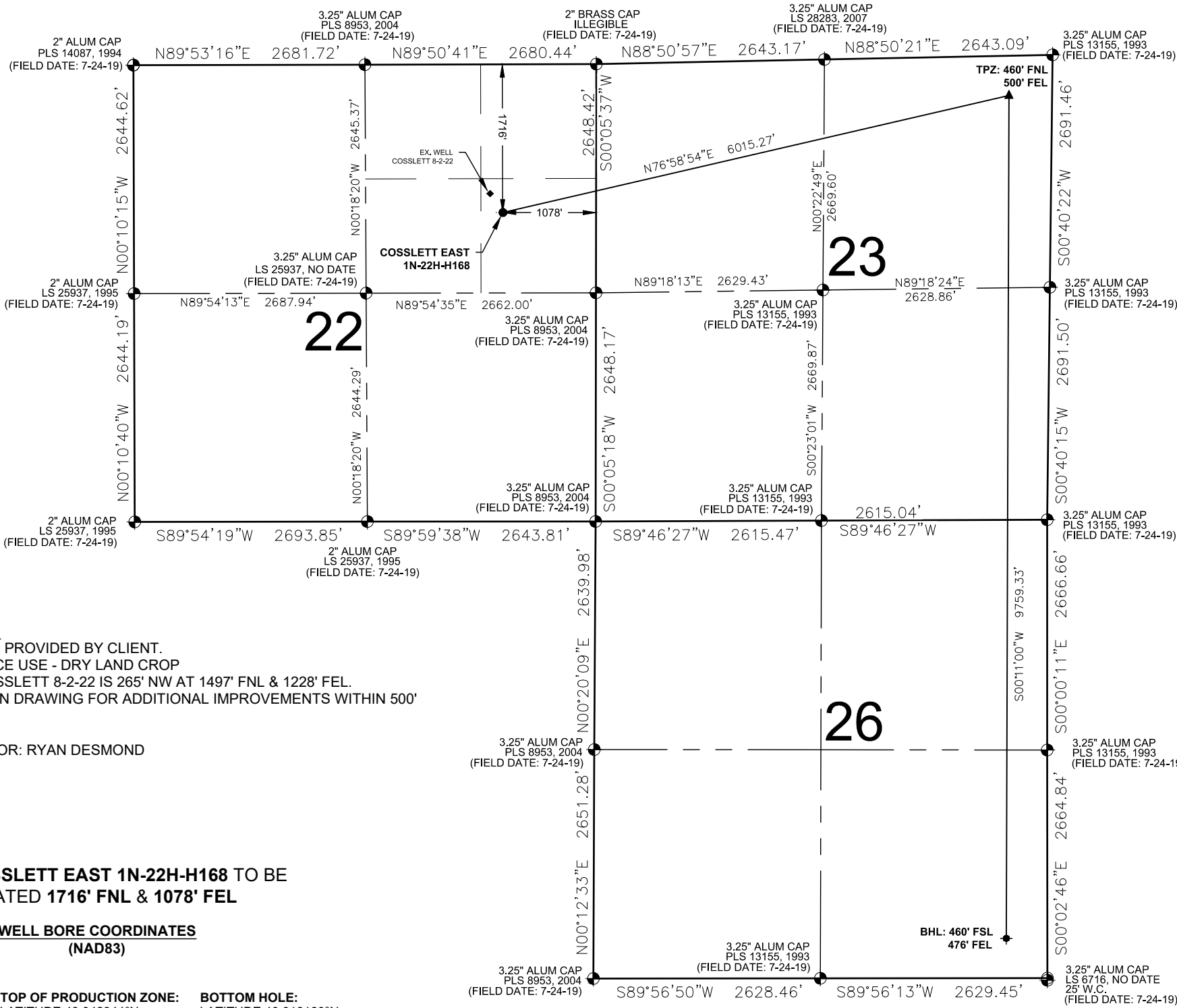


COSPLETT EAST 1N-22H-H168
WELL LOCATION EXHIBIT



WELL NOTES:
BH LOCATION PROVIDED BY CLIENT.
LAND SURFACE USE - DRY LAND CROP
EX. WELL COSPLETT 8-2-22 IS 265' NW AT 1497' FNL & 1228' FEL.
SEE LOCATION DRAWING FOR ADDITIONAL IMPROVEMENTS WITHIN 500'

PDOP=1.4
GPS OPERATOR: RYAN DESMOND

WELL COSPLETT EAST 1N-22H-H168 TO BE
LOCATED 1716' FNL & 1078' FEL

WELL BORE COORDINATES
(NAD83)

SURFACE LOCATION:
GROUND ELEVATION=5181'
LATITUDE:40.039229°N
LONGITUDE:104.983901°W

TOP OF PRODUCTION ZONE:
LATITUDE:40.042944°N
LONGITUDE:104.962973°W

BOTTOM HOLE:
LATITUDE:40.016160°N
LONGITUDE:104.963099°W

- NOTES:
1. THIS FIELD SURVEY CONFORMS TO THE MINIMUM STANDARDS SET BY THE COGCC, RULE NO. 215
 2. ALL DISTANCES AND BEARINGS SHOWN HEREON ARE GROUND VALUES AS GPS MEASURED IN THE FIELD, WITH TIES TO WELLS MEASURED PERPENDICULAR TO LINES SHOWN HEREON. THIS LOW DISTORTION PROJECTION (LDP) IS BASED ON THE NORTH AMERICAN DATUM OF 1983, U.S. SURVEY FOOT WITH A LATITUDE ORIGIN OF 40.043908°N, A CENTRAL MERIDIAN LONGITUDE OF 104.999189°W, AND A SCALE FACTOR ON THE CENTRAL MERIDIAN OF 1.000243 (EXACT). THE LDP BASIS OF BEARINGS IS GEODETIC NORTH.
 3. FIELD VERIFICATION OF MONUMENTS COMPLETED WITHIN 1 YEAR OF SIGNATURE DATE, UNLESS OTHERWISE NOTED.

LEGEND

● = EXISTING MONUMENT	▲ = TOP OF PRODUCTION ZONE
○ = CALCULATED POSITION	◆ = EXISTING WELL
● = PROPOSED WELL	TPZ = TOP OF PRODUCTION ZONE
◆ = BOTTOM HOLE	BHL = BOTTOM HOLE

I, BRANDON A. MOSER, A LICENSED PROFESSIONAL LAND SURVEYOR IN THE STATE OF COLORADO, DO HEREBY STATE TO **CRESTONE PEAK RESOURCES** THAT THE WELL LOCATION EXHIBIT SHOWN HEREON WAS PREPARED BY ME OR UNDER MY DIRECT SUPERVISION AND THE DRAWING SHOWN HEREON ACCURATELY DEPICTS THE PROPOSED LOCATION OF THE WELL. THIS EXHIBIT MEETS THE REQUIREMENTS OF A GIS LAND POSITION AS DEFINED BY SECTION 38-51-109.3 C.R.S. AND AS SUCH PER SECTION 38-51-109.3 C.R.S. CANNOT BE RELIED UPON TO DETERMINE OWNERSHIP.



BRANDON A. MOSER, PLS 38412
COLORADO LICENSED PROFESSIONAL LAND SURVEYOR
FOR AND ON BEHALF OF P.F.S., LLC
d.b.a. ASCENT GEOMATICS SOLUTIONS

NOTICE: ACCORDING TO COLORADO LAW YOU MUST COMMENCE ANY LEGAL ACTION BASED UPON ANY DEFECT IN THIS SURVEY WITHIN THREE YEARS AFTER YOU FIRST DISCOVER SUCH DEFECT. IN NO EVENT MAY ANY ACTION BASED UPON ANY DEFECT IN THIS SURVEY BE COMMENCED MORE THAN TEN YEARS FROM THIS SAID DATE OF THIS CERTIFICATION SHOWN HEREON.



8620 Wolff Court
Westminster, CO 80031
(303) 928-7128
www.ascentgeomatics.com

FIELD DATE:
07-24-19

DRAWING DATE:
01-10-22

BY:
CSG

CHECKED:
IJM

WELL NAME:
COSPLETT EAST 1N-22H-H168

SURFACE LOCATION:
SE 1/4 NE 1/4 SEC. 22, T1N, R68W, 6TH P.M.
WELD COUNTY, COLORADO

PREPARED FOR:

