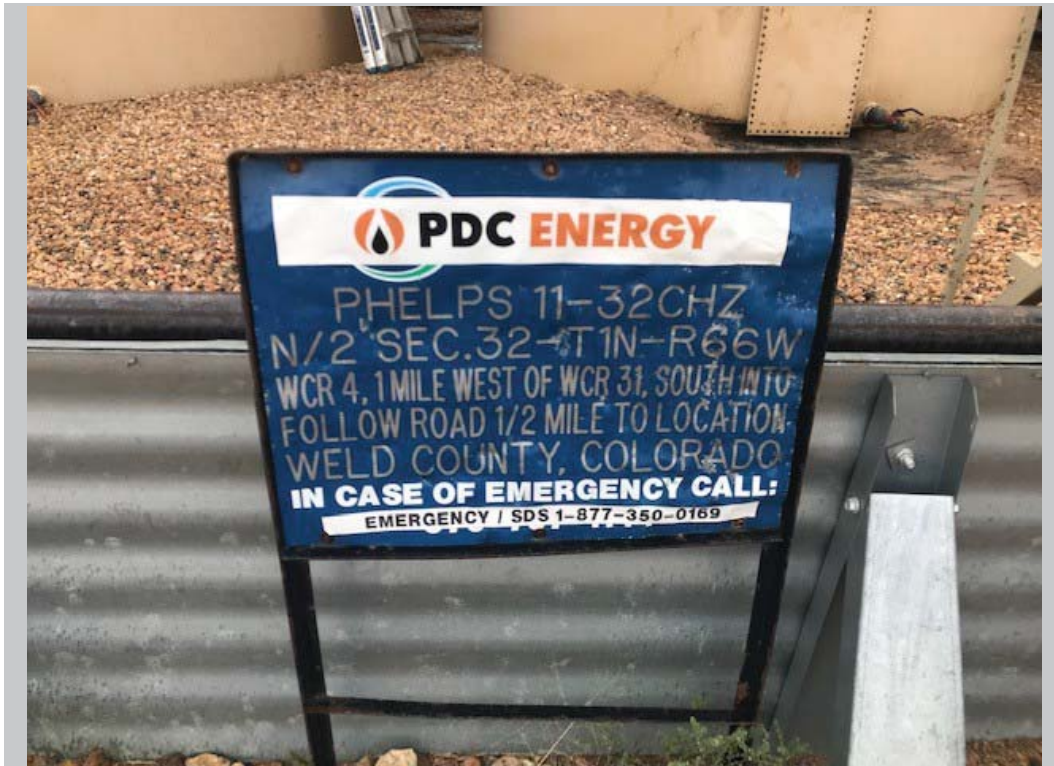


APPENDIX A

SITE PHOTOS



Description:

#1 - Phelps 11-32CHZ AST Release Site



Description:

#2 - A Pinhole Failure in the AST Shell Caused the Release

Photo Log



Description:

#3 - Looking North at AST that Failed. Note Synthetic Liner Beneath ASTs.

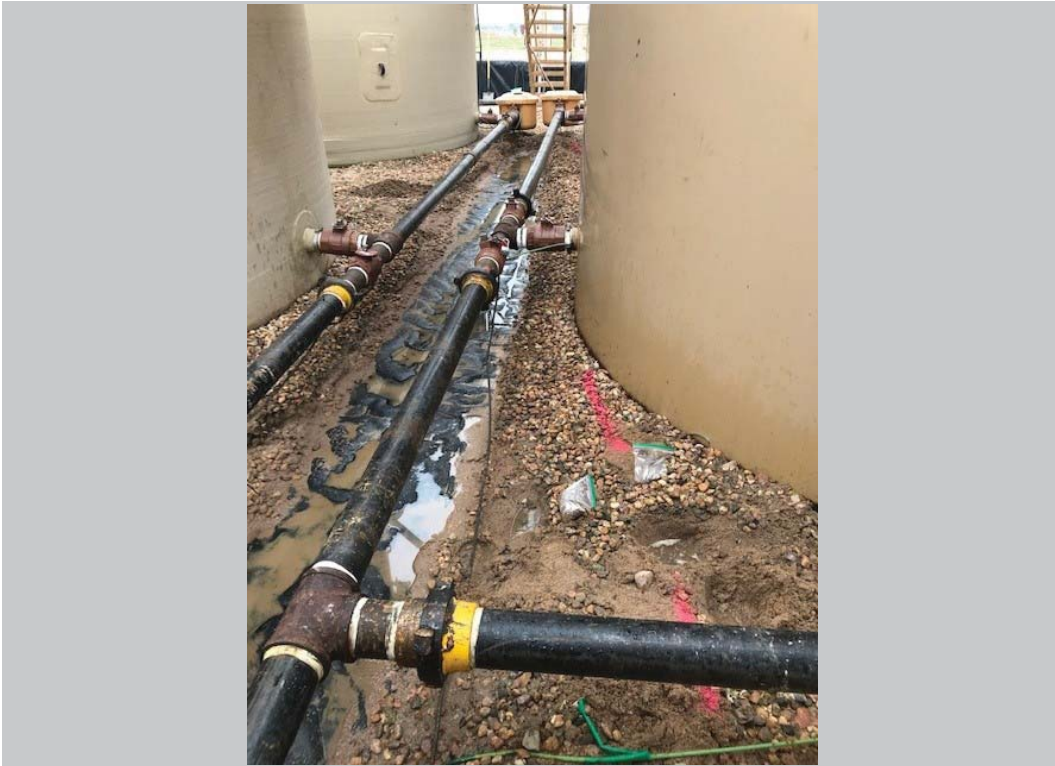
Photo Log



Description:

#4 - Looking West at AST that Failed. Impacted Soil has been removed above the liner and partially beneath the AST.

Photo Log



Description:

#5 - Looking West at Impacted Area. Pink Line Represents Further Excavation Required.

Photo Log



Description:

#6 - Looking North at Impacted Area. Note Standing Water Above Liner Indicating Liner Integrity

Photo Log



Description:

#7 - Looking West While AST is Removed from the Tank Battery

Photo Log



Description:

#8 - Inspection of the Bottom of the AST; No Failures Observed in Tank Floor.

Photo Log



Description:

#9 - Looking South at Former AST Pad During Sampling

Photo Log



Description:

#10 - Looking West at Former Tank Pad. Pink Line Indicates Area Requiring Further Excavation.