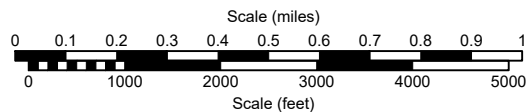
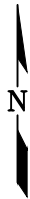
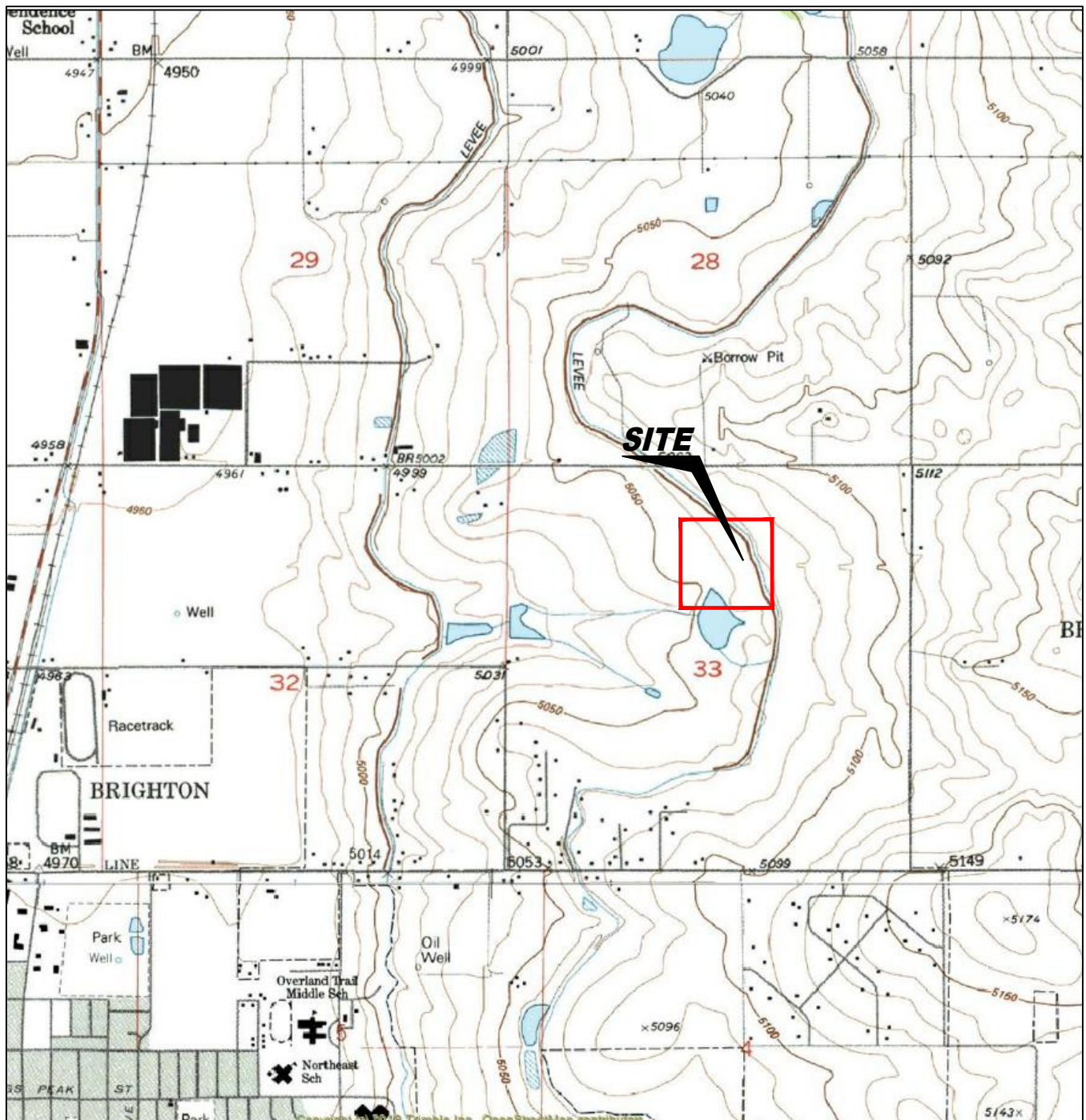


FIGURES



USGS 7.5 MINUTE SERIES (TOPOGRAPHIC)

Figure 1
SITE LOCATION MAP

PDC ENERGY
PHelps 11-32CHZ AST RELEASE
SENE Sec. 32, T1N, R66W, 6th PM
Weld County, Colorado
40.01117°, -104.79321°

Project # C022-125	Facility # 433548	Drawn By TA
Date 10/14/22	Reviewed By PH	Filename 22125T





LEGEND

- ★ RELEASE POINT FROM AST
- ABOVE GROUND STORAGE TANK
- FORMER FORMER FACILITY
- CONTAINMENT WALL
- EXTENT OF EXCAVATION

Figure 2
SITE MAP

PDC ENERGY
PHELPS 11-32CHZ AST RELEASE
 SENE Sec. 32, T1N, R66W, 6th PM
 Weld County, Colorado
 40.01117°, -104.79321°

Project No. C022-125	Facility # 433548	Drawn By TA
Date 10/14/22	Reviewed By PH	Filename 22125T



